



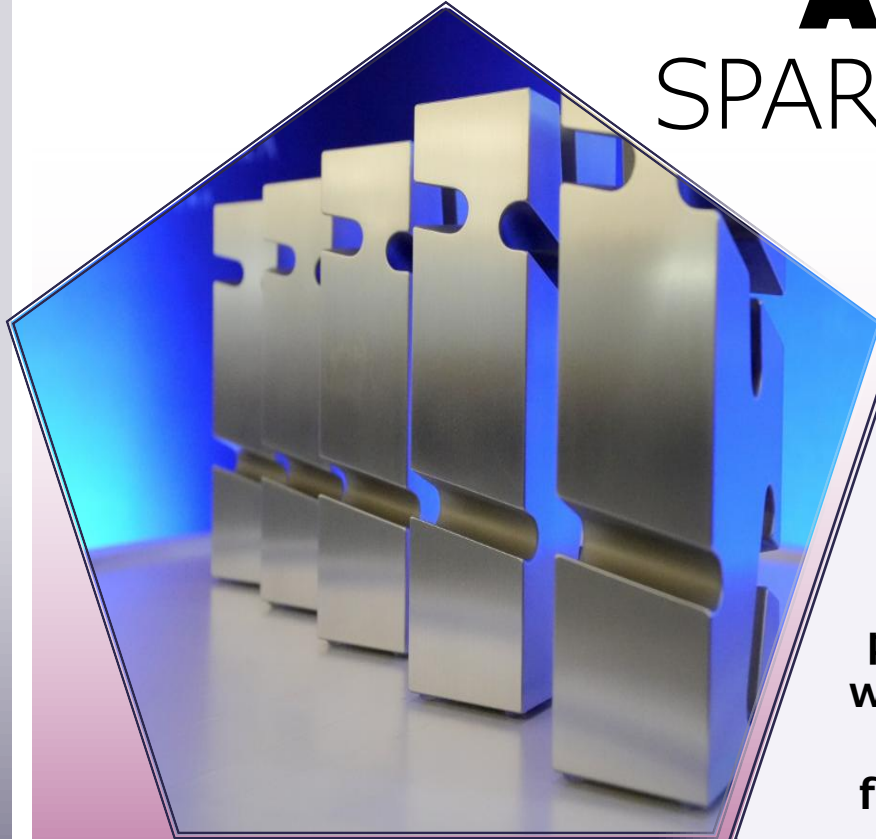
State Land Service  
Republic of Latvia

# CADASTRAL DATA

THE CORE FOR A SUSTAINABLE FUTURE

**Vita Narnicka**  
Director General  
of the State Land  
Service of Latvia

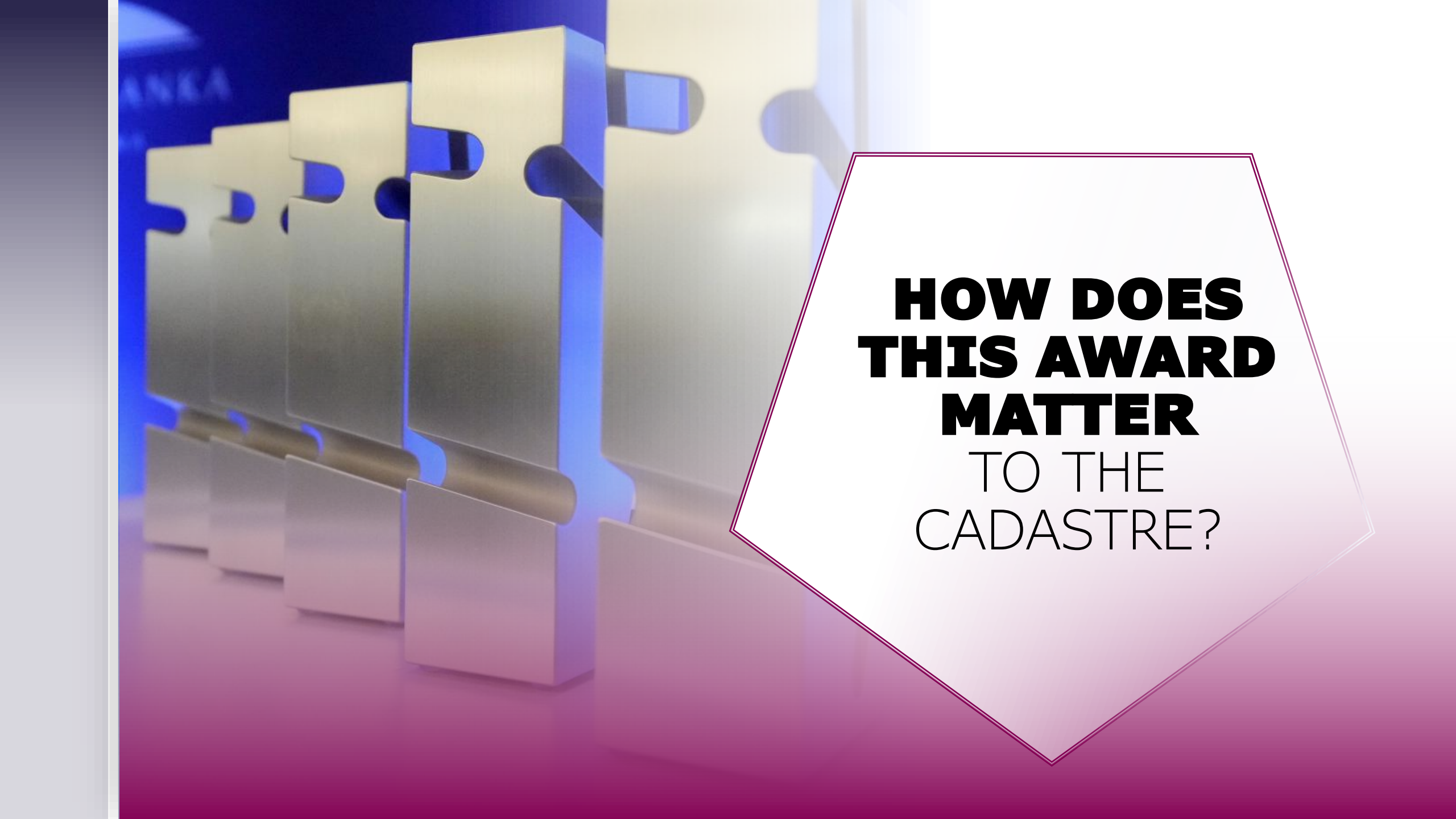
# **A SUSTAINABILITY AWARD** THAT SPARKS ONGOING PROGRESS!



Proud to be the first  
public institution honoured  
with the Latvian Sustainable  
Governance Award 2024  
for growth in sustainability.







**HOW DOES  
THIS AWARD  
MATTER**  
TO THE  
CADASTRE?

# **HOW DOES THIS AWARD MATTER TO THE CADASTRE?**

**Sustainability  
starts  
within the  
organization**

**Only an organization  
dedicated to  
sustainable practices  
can effectively manage  
a sustainable Cadastre**

**The Cadastre  
does not require being  
more modern, bigger,  
or faster**

**The Cadastre  
must be  
sustainable**



HOW DO WE  
ENVISION  
OURSELVES  
**IN THE  
FUTURE?**





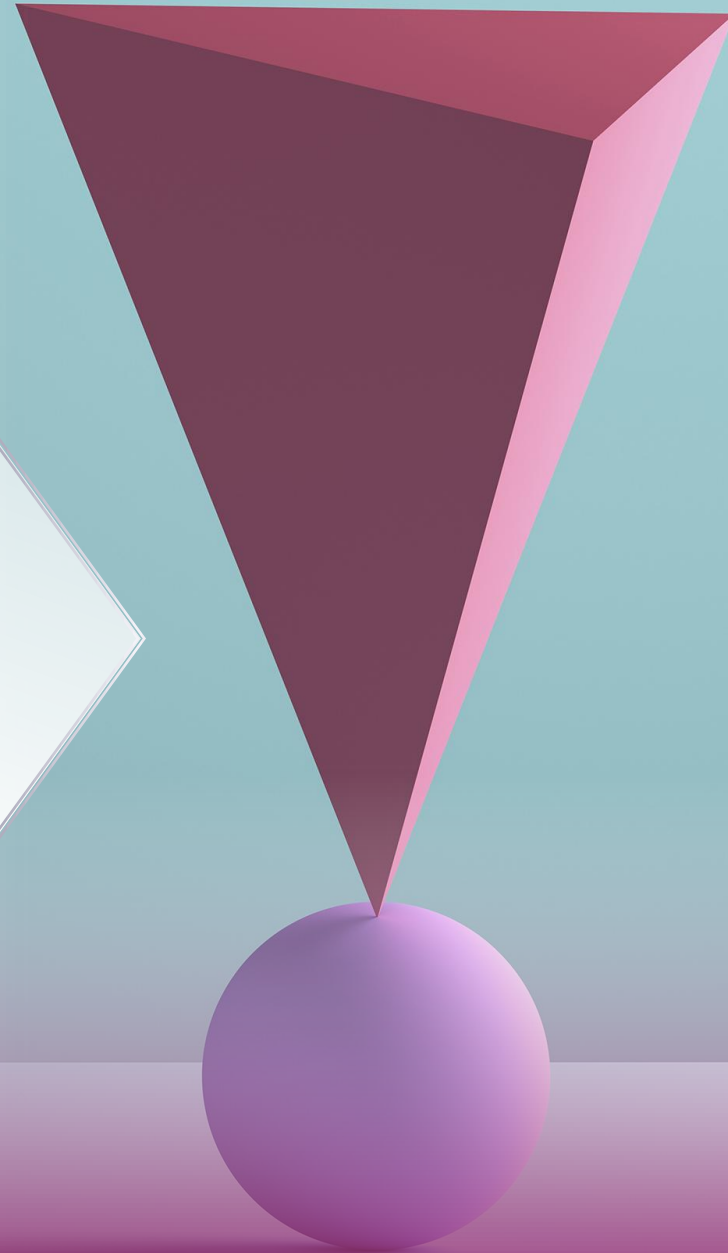
# HOW DO WE ENVISION OURSELVES **IN THE FUTURE?**

**We are a trusted data  
source driving the  
national growth.**

**Data gathering  
methods are  
advancing, but the  
responsibility for  
data reliability  
remains with us.**

**We are no longer just  
surveyors – we are at  
the forefront of shaping  
the future of data  
management.**

NAVIGATING  
AN UNCERTAIN  
FUTURE WITH  
A SUSTAINABLE  
APPROACH –  
**CHALLENGES  
OF CADASTRE**



# NAVIGATING AN UNCERTAIN FUTURE WITH A SUSTAINABLE APPROACH – **CHALLENGES OF CADASTRE**

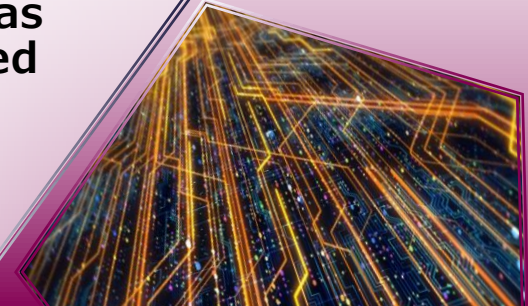
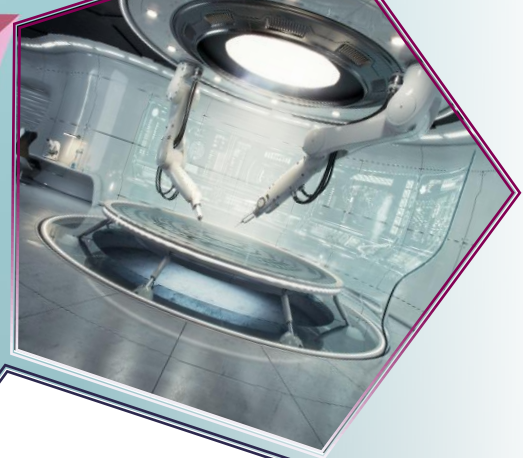
To ensure a  
sustainable  
Cadastre tomorrow,  
we must take  
decisive steps  
today.

AI-generated data  
and knowledge are  
driving the emergence  
of a new reality.

Public demand is  
shifting towards  
faster, more  
simplified data  
acquisition and  
seamless access.

Data is the new gold  
meanwhile traditional  
financial models are  
outdated, as data has  
long been considered  
low-cost.

The technological  
revolution and  
open-access platforms  
are redefining the rules  
of the game.





THE KEY  
STRATEGIC  
**DIRECTIONS FOR  
SUSTAINABILITY**



# THE KEY STRATEGIC **DIRECTIONS FOR SUSTAINABILITY**



## **ENVIRONMENT AND CLIMATE**

E1, E2, E5



## **SOCIAL (STAFF)**

S1



## **SOCIETY AND GOVERNANCE**

G1, S4

**WHAT ARE  
THE KEY  
COMPONENTS**  
OF OUR  
SUSTAINABILITY  
STRATEGY?





# WHAT ARE THE KEY COMPONENTS OF OUR SUSTAINABILITY STRATEGY?

## **Service and management**

The Cadastre accumulates crucial data for society in the future.

## **Data – easily accessible, straightforward and concise**

Data holds value for society and is easily accessible.

## **People are the driving force behind sustainable growth**

Only engaged, skilled, and mindful employees can secure sustainable growth.

## **Honouring traditions through digital transformation**

Traditions and digital transformation can coexist seamlessly.

## **Environment – maximizing resource efficiency**

Everyone must be aware of how resources are used – energy efficiency and office space optimization serve as key metrics.





OUT**COMES**



# OUTCOMES



**The open data** of the State Address Register is downloaded **2.7 times every minute**



**Data usage is expanding**  
The demand for data is rising.



**the revenue** from data processing **over 30 %**

**Open data and growing revenue**

Cadastre data is open, meanwhile the revenue from data processing has surged by over 30 %.

**Data from other organizations**  
Over 50 % of buildings are registered using data sourced from other organizations without in-situ verification.

**Data acquisition from diverse sources**

Paper-based documentation is being replaced by real-time data from national registries and direct client input.

**Data sourced from public registers**  
100% of encumbrances are registered using data sourced from other state registers.



# TAKEAWAYS



**A sustainable  
Cadastre upholds  
traditions while  
contributing to  
national prosperity.**  
The opportunities  
of the new era enable  
us to preserve  
our traditions while  
shaping the future.



**Data has emerged  
as the new gold.**  
Data holds value  
only if it  
contributes to  
decision-making.



**Digital transformation  
– paving the way  
towards sustainability.**

**A FUNDAMENTAL  
PILLAR**

OF SUSTAINABLE  
GOVERNANCE  
AND SOCIETAL  
ADVANCEMENT

# CADASTRAL DATA

The  
State Land  
Service  
of Latvia

CADASTRE  
CONNECTS

MAPS  
AND  
MEANING

DECISIONS  
AND  
FUTURE





**CADASTRE  
CONNECTS**

**DECISIONS  
AND  
FUTURE**

**The State Land  
Service  
of Latvia**

**MAPS  
AND  
MEANING**

THANK **YOU!**