

An aerial photograph of a multi-lane highway with several cars. A semi-transparent grey rectangle is overlaid on the left side of the image, containing the title text. A white geometric network of lines is overlaid on the right side of the image, representing a data layer or map overlay.

EuroGeographics Data Proposition

General Assembly 2025 Riga
May 20th

Proud to represent The European National Mapping, Cadastral and Land Registration Authorities



Enabling access
to members' data
and expertise



Representing
members'
interests



Providing opportunities
for knowledge
exchange

Underpinned by Open Maps For Europe 2 (OME2)



Foundation for future
pan-European high-
value datasets



Production process and
prototype for harmonised
large-scale data



Aligned to EU Policy
objectives and UN
core geospatial data
recommendations

Connecting you to maps, geospatial and land information for Europe



Enabling access to official high-value European geospatial data:
Working with members for the public good



Sharing expertise and best practice in pan-European data production:
Supporting members' ambitions and capacity building



Demonstrating use and value to promote integration of members' data within European and global systems benefiting people and planet:
Representing members' interests.



A society empowered by use of members' trusted geospatial services

GA 2023 mandate: A shift in strategic focus

General Assembly 2023

Members agreed:

- EuroGeographics will focus on enabling easy access to their data.
- To secure alternative funding to EU projects or handover OME2 outcomes.

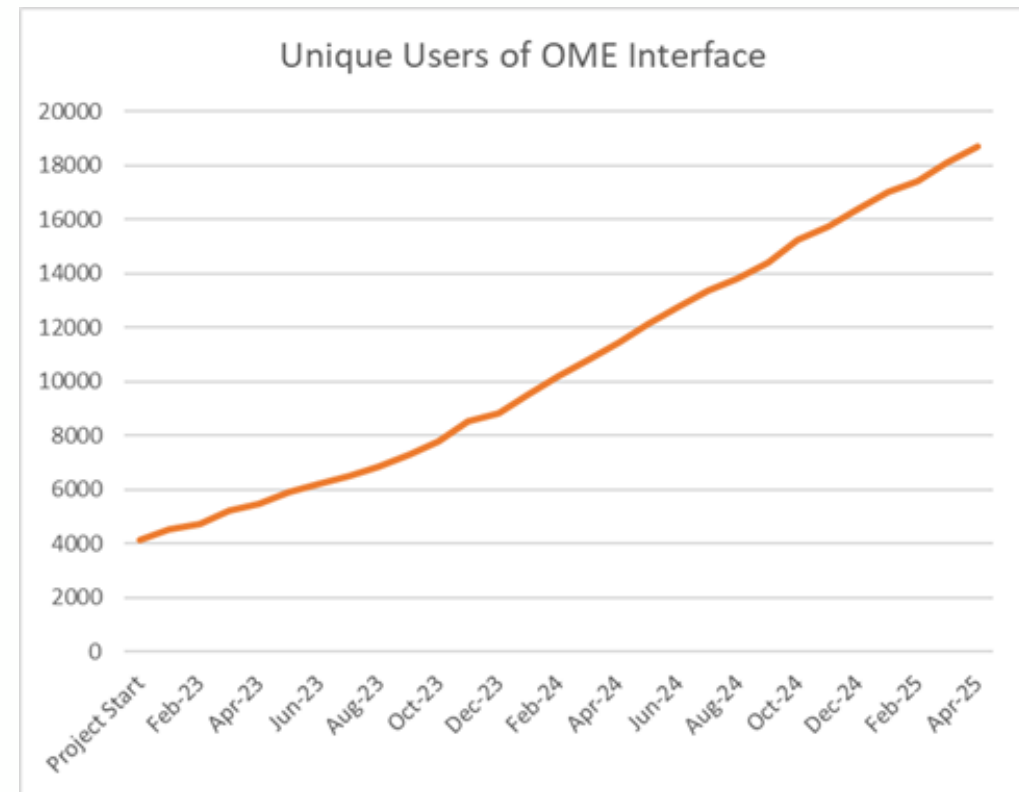
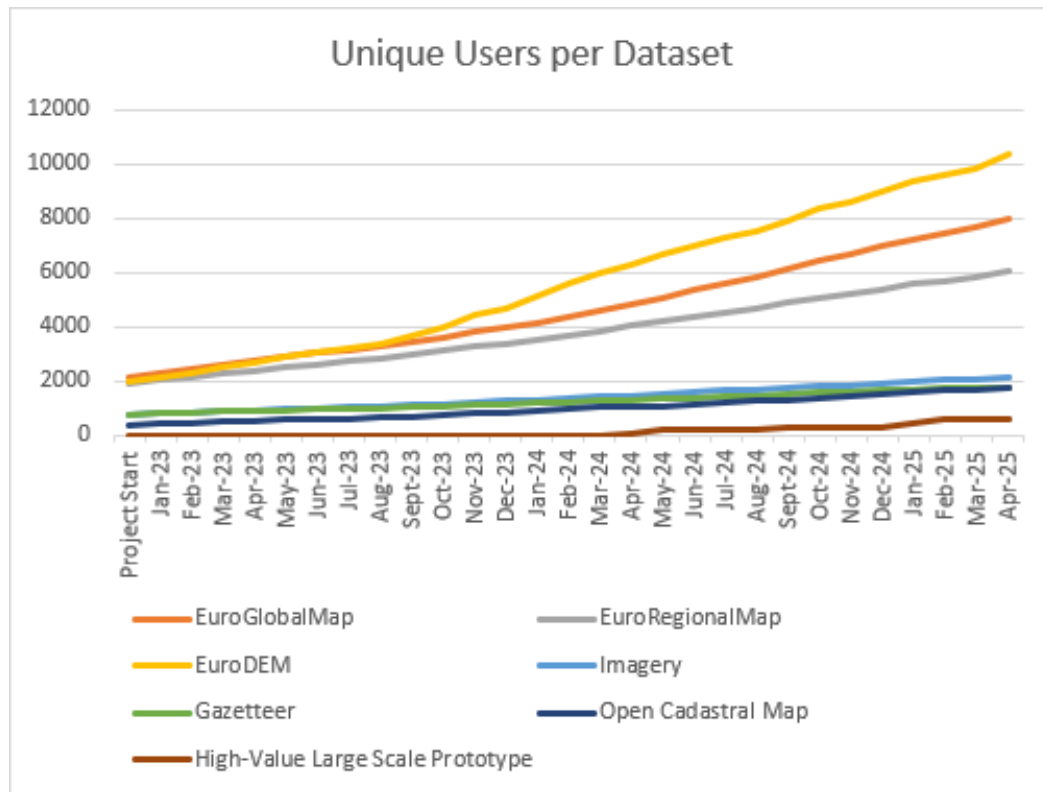
Post 2023

EuroGeographics membership activities are underpinned by the principle of enabling access to members' data – and **the value of data is in its use.**

OME2: A foundation for future pan-European high-value datasets

- Proves EuroGeographics and its members can deliver large-scale edge-matched data.
- Provides a practical demonstration of the benefits of harmonised national data.
- Demonstrates demand for edge-matched data with higher-than-expected user numbers.
- Enhances Open Cadastral Map and establishes a vision for the future.

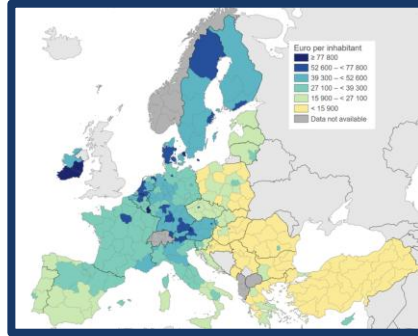
OME2: User Numbers



OME2: A foundation for future pan-European high-value datasets

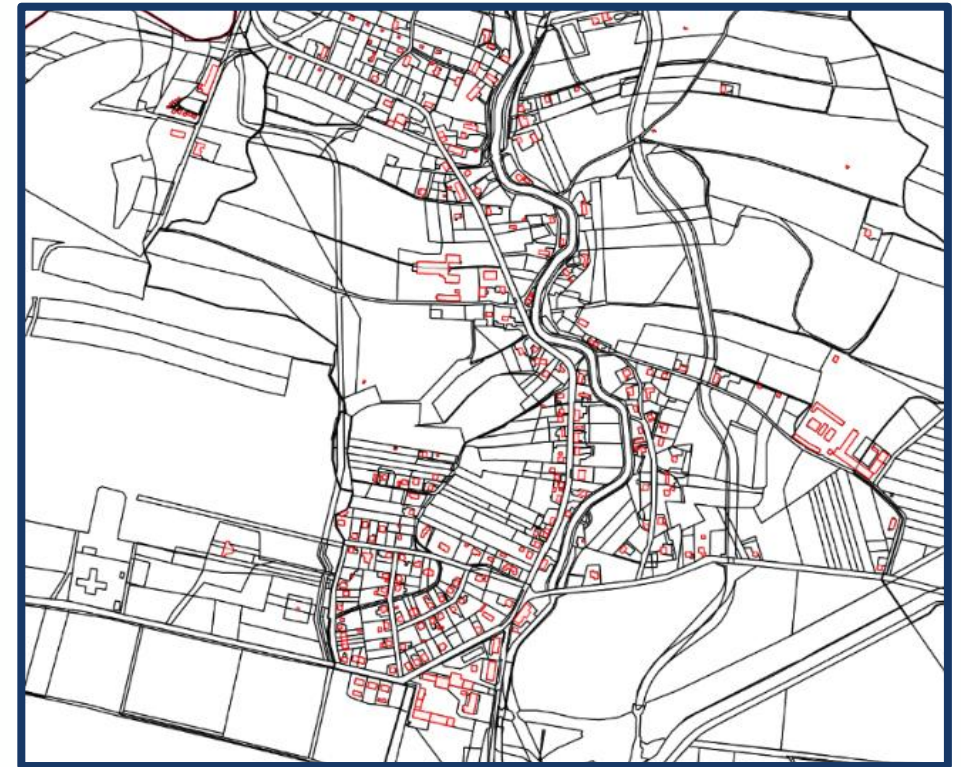
- Strengthens relevance and credibility of EuroGeographics and its members with key stakeholders in the European and Global spheres.





“The biggest benefit of our relationship with EuroGeographics is collaboration in establishing high quality European scaled geospatial data availability, which includes fostering partnerships between the statistical and geospatial decision makers and data integration work at national and European level.”

Eurostat

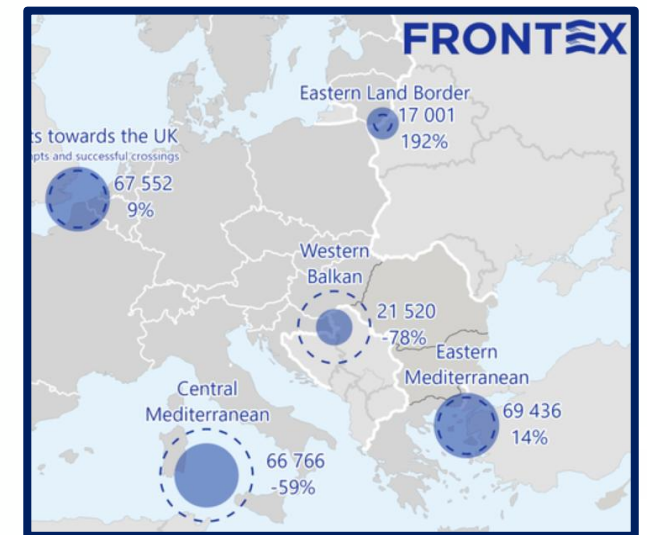


“Over the past number of years, EuroGeographics has been a reliable source of high-quality geospatial information for us and the availability of this seamless datasets has significantly contributed to our work. We believe that the use of EuroGeographics data and products will become even more established and intensify as the range of products on offer becomes more diverse. This will enable the data sets to be used for a variety of different requirements.”

European Union Military Staff (EUMS)

“Access to large scale authoritative administrative boundary data is essential for border control, surveillance and security.”

Frontex Geospatial Team



“High-quality authoritative transport network data at pan-European level is crucial to support the DG MOVE’s work around Military Mobility, recharging infrastructure for electric vehicles, and other policy areas.”

DG MOVE



The Action Plan on Military Mobility (2022-2026):



Investing in dual-use transport infrastructure along the trans-European transport network.



Accelerating, digitalising and streamlining national procedures and processes.



Strengthening the preparedness and resilience of transport infrastructure.



Enhancing cooperation with NATO and key partners.

“Our key wish is for streamlined access to harmonised, authoritative geospatial data across Europe, ensuring its timely and seamless integration into Copernicus data and products. Strengthening this partnership through innovation in data access, integration, and harmonisation will maximise its impact in supporting European and global sustainability goals.”

European Environment Agency



UN-GGIM

“The relationship between EuroGeographics and the UN-GGIM Committee of Experts supports access to high-quality, standardised geospatial data from across Europe, strengthening global coordination and data sharing.”

UN-GGIM Committee of Experts



A one-of-kind dataset with a unique proposition

The only high-value large-scale pan-European dataset:

- Developed through a unique production process underpinned by national expertise in integration of core geospatial data.
- Created using authoritative national data and offering initial EU27+CH coverage with a vision to use data from all members.
- Harmonised and edge-matched to deliver the data that users have said they need and want.
- Easily available via the well-established Open Maps For Europe portal.

Benefits to Members

- Ensures and increases use of members' data by key stakeholders by delivering the edge-matched pan-European dataset they tell us they need.
- Strengthens the credibility and relevance of EuroGeographics and members by delivering the harmonised interoperable trusted pan-European data users want.
- Supports members' capacity-building through exchange of technical expertise and tools.
- Fulfils EU and global requirements with a self-sustaining added value solution to place authoritative pan-European data within wider data ecosystem.
- Extends the unique value proposition of NMCAAs – unique production process could be shared with stakeholders so they benefit from members' expertise.

Connecting you to maps, geospatial and land information for Europe



Enabling access to official high-value European geospatial data:
Working with members for the public good



Sharing expertise and best practice in pan-European data production:
Supporting members' ambitions and capacity building



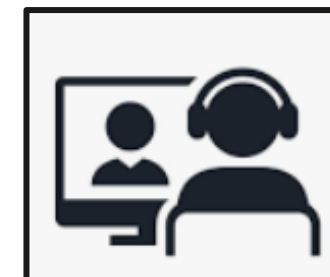
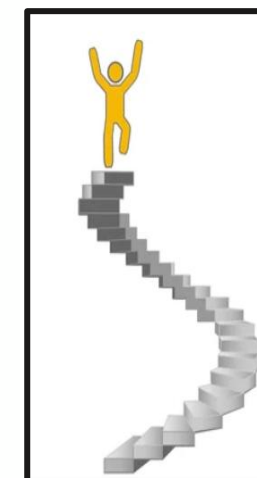
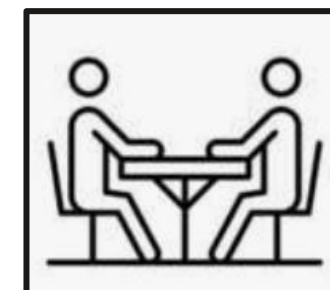
Demonstrating use and value to promote integration of members' data within European and global systems benefiting people and planet:
Representing members' interests.



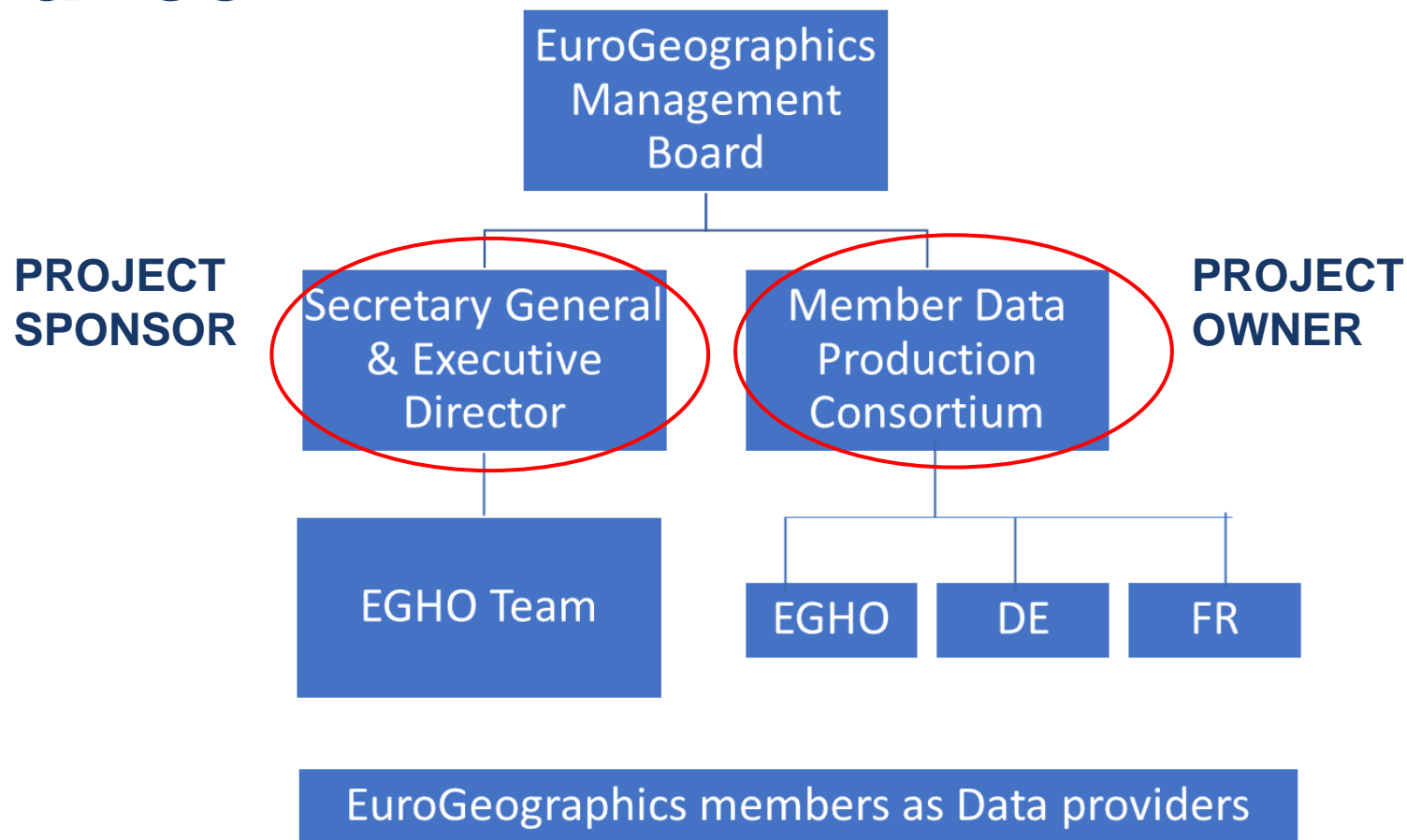
A society empowered by use of members' trusted geospatial services

Aug 2023

Jan 2024

March
GA2024July – Dec
2024Feb –
May 2025May
GA2025Federal Agency for
Cartography and GeodesyIGN
FRANCE

Governance



Recommendation for approval at the GA2025

EuroGeographics Management Board recommends that members approve the work to deliver the proposed high-value large-scale, edge-matched, seamless pan-European dataset.

A viable and relevant Association that continues to meet the needs of all its diverse members and stakeholders.