



**RÉPUBLIQUE
FRANÇAISE**

*Liberté
Égalité
Fraternité*



FINANCES PUBLIQUES

Rationalising the cadastral applicative landscape

The challenge of locally-initiated softwares

5 May 2025

SUMMARY

INTRODUCTION 01.

A brief overview of the french cadastral administration and its missions

CADASTRAL MAP IT SYSTEM 02.

An insight into the IT system underlaying our topographic mission

CADASTRAL MAP LOCALLY-INTIATED 03. SOFTWARES

A presentation on the locally-initiated softwares phenomenon in our administration

VL

Echelle $\frac{1}{20.000}$

Cabteau d'Assemblage
2e Plan Cadastral parcellaire de la Commune de
PORGE
Canton de Castelnau
Aren. Par de Bordeaux Départ de la Gironde
Commune chef de Canton le 1827 sous l'Administration
de M. le Baron d'Armaignac Préfet
M. Lantille P. R. Maire
et sous la Direction de
M. l'Intendant Directeur des Contributions
M. l'Ingénieur en chef
Bar. Vichereau la Fosse Directeur

NOR

LE FORG.

Rebelle 61 millimètres: nœud 22 millimètres sur d 1 à 12 mm.

VL

Echelle $\frac{1}{20.000}$

Cabteau d'Assemblage
2^e Plan Cadastral parcellaire de la Commune de
PORGE
Canton de Castelnau
Aren^{de} de Bordeaux Départ^{ement} de la Gironde
Commune chef de Canton le 1^{er} 1827 sous l'Administration
de M^{rs} le Baron d'Armaignac Préfet
M^{rs} Lantille & C^{ie} Notaires
et sous la Direction de
M^{rs} D'Arta Director^{ial} des Contributions
M^{rs} D^{rs} Goussier en chef
Bar Vichereau la Poste aux
Lettres

NORT

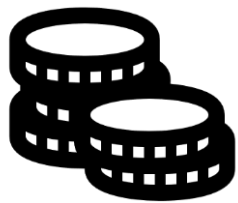
LE FORG.

Rebelle d'1 millimètre pour 20 mètres ou d'1 à 12 m.

INTRODUCTION

ORGANISATION & MISSIONS OF THE CADASTRE IN FRANCE

Instituted in 1807, the cadastre serves multiples functions :



**TAXATIO
N**



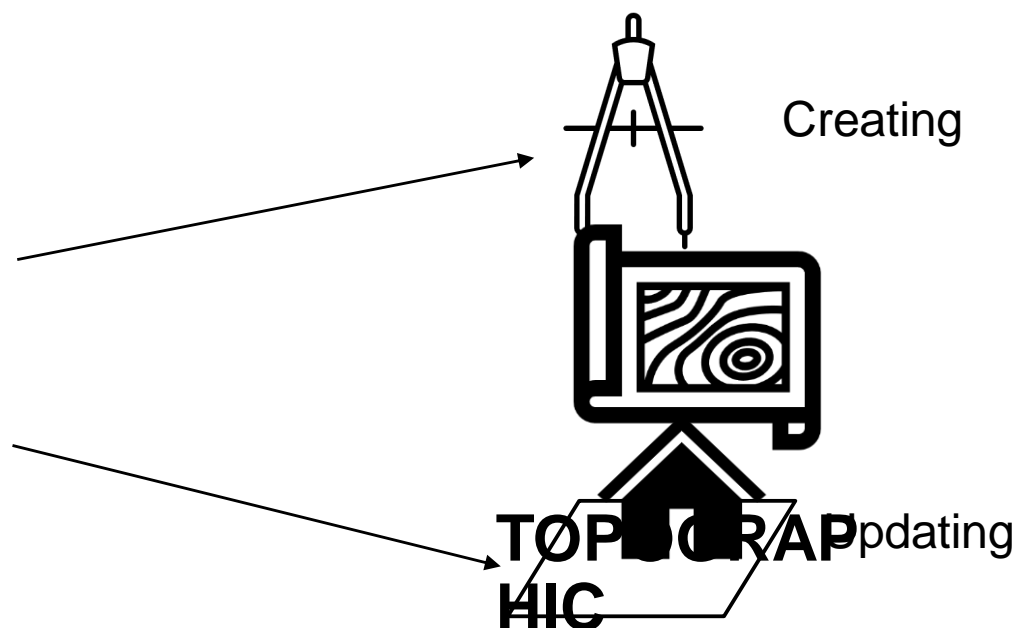
**TOPOGRAP
HIC**

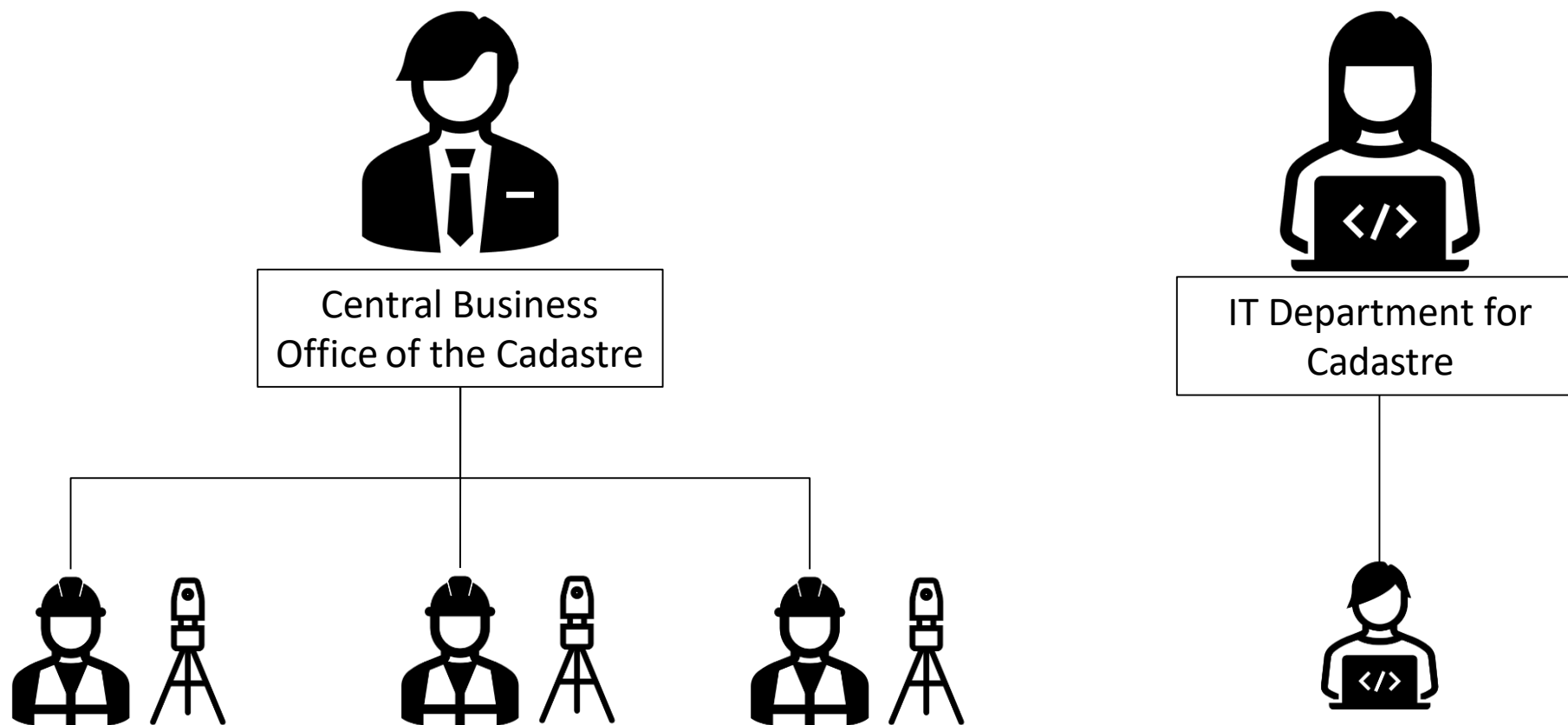


**LAND
REGISTRY**

INTRODUCTION

ORGANISATION & MISSIONS OF THE CADASTRE IN FRANCE





2

Cadastral map information technology system

CADASTRAL MAP IT SYSTEM

FOR TOPOGRAPHIC PURPOSES

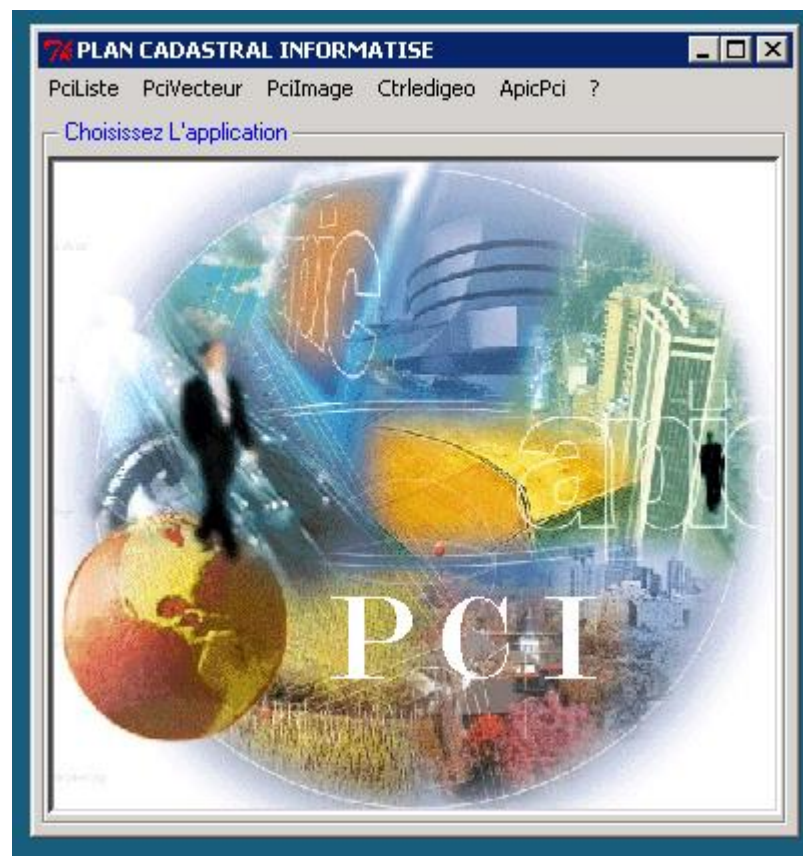
1993 **PCI**

:

Digital Cadastral Map



Updating the cadastral
map



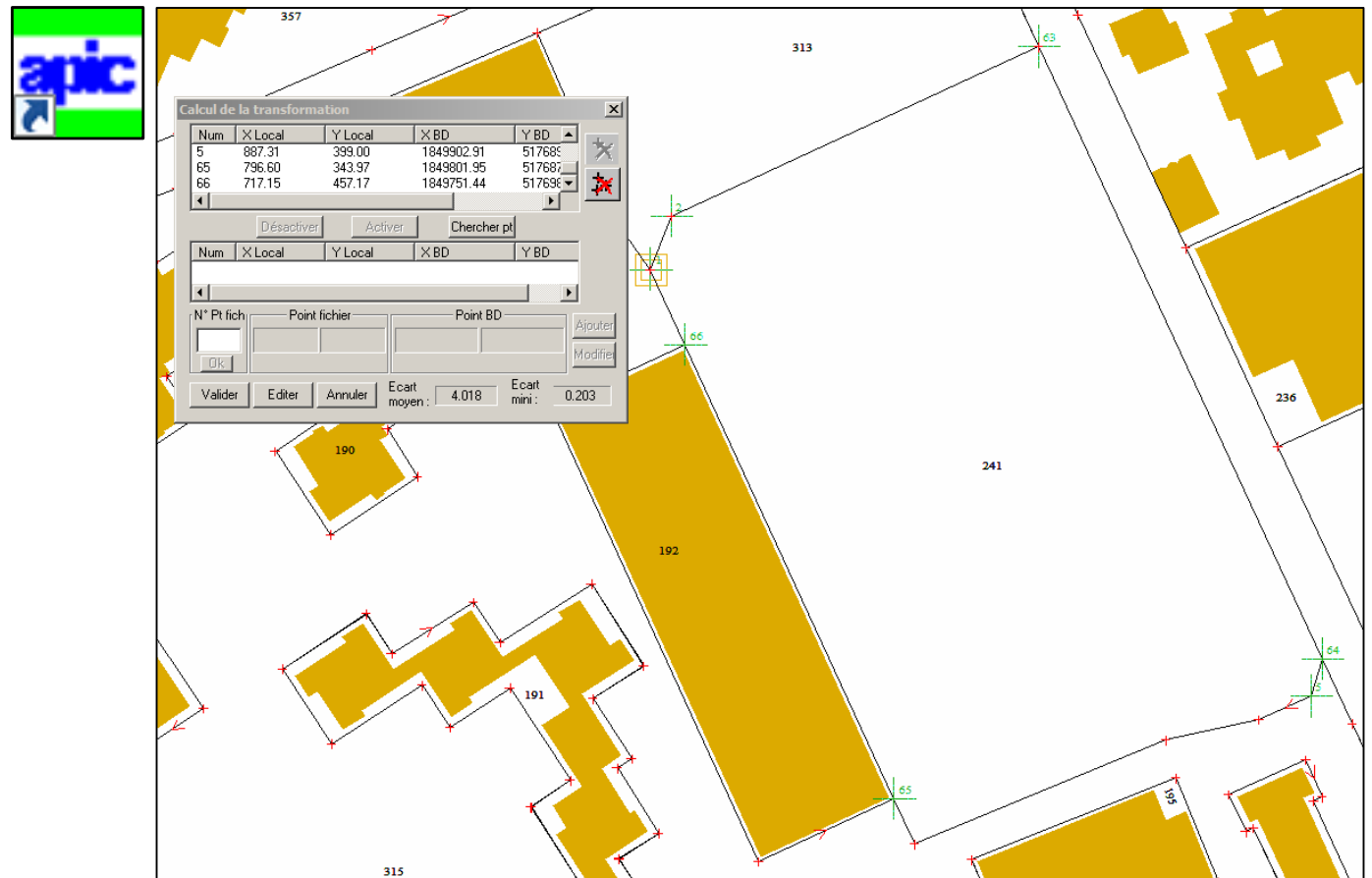
CADASTRAL MAP IT SYSTEM

FOR TOPOGRAPHIC PURPOSES

1993 PCI

▪ Digital Cadastral Map

- Up-to-date vectorial database comprising all national territory
- Thick-client application deployed on a Windows Server environment



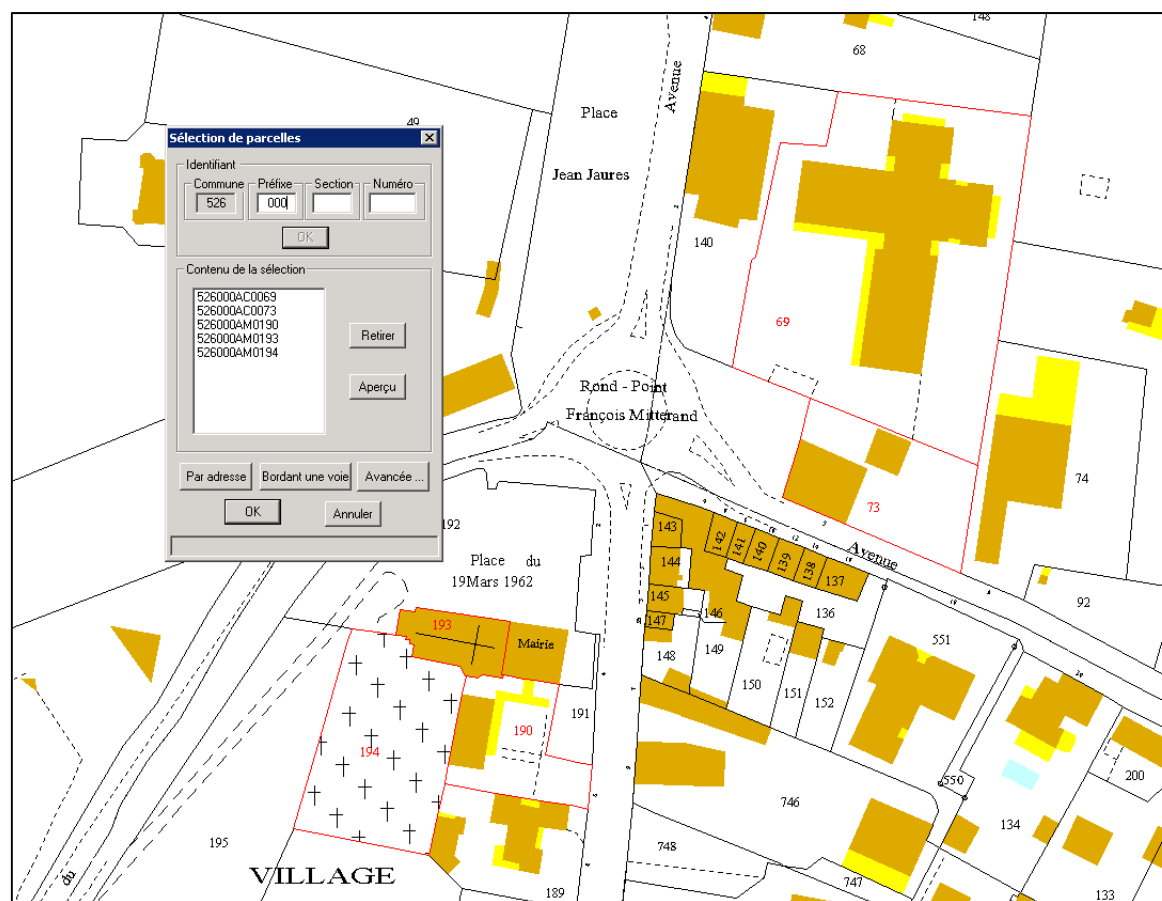
CADASTRAL MAP IT SYSTEM

FOR TOPOGRAPHIC PURPOSES

1993 PCI

▪ Digital Cadastral Map

- Performs data validation during import to ensure topographic consistency
- Allows for edition of digital cadastral map extracts and export of geographic data in specific formats such as DXF and EDIGEO



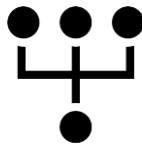
CADASTRAL MAP IT SYSTEM

FOR TOPOGRAPHIC PURPOSES

2008 SCPC

■
■

Cadastral Map Consultation
Service



Distributing the cadastral
data



CADASTRAL MAP IT SYSTEM

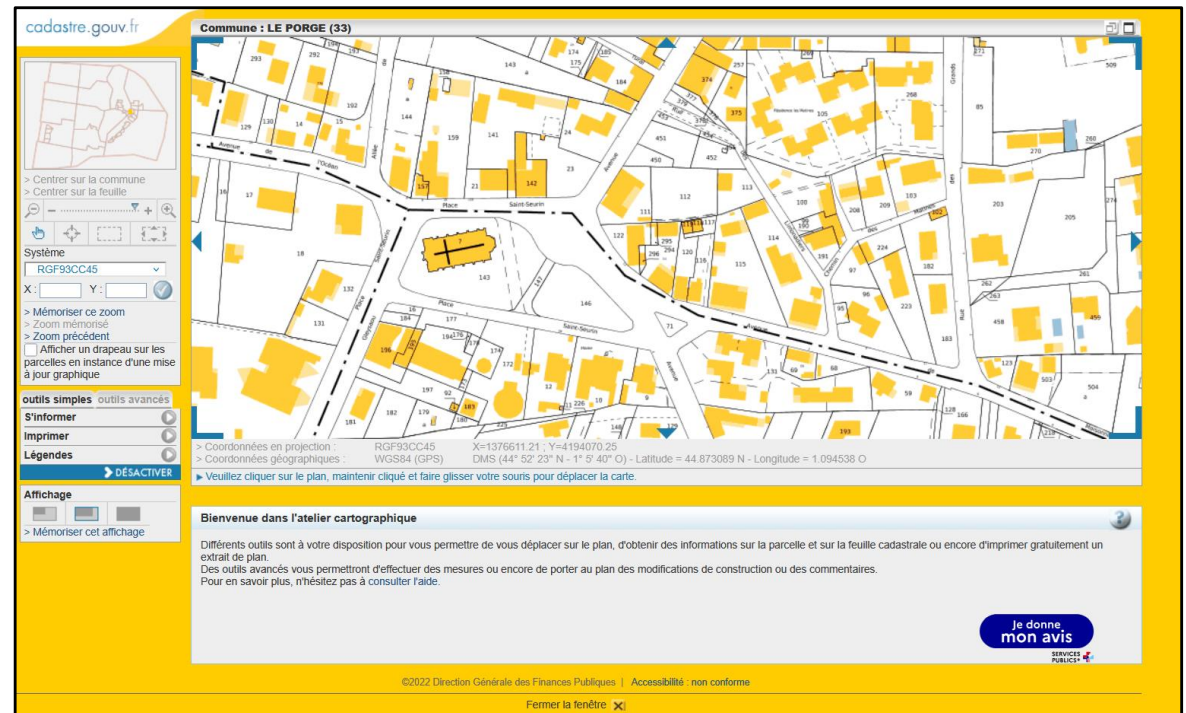
FOR TOPOGRAPHIC PURPOSES



2008 SCPC

- Cadastral Map Consultation Service

- Connected to the PCI
- External users access through cadastre.gouv.fr
- Internal users access through authentication-based portal



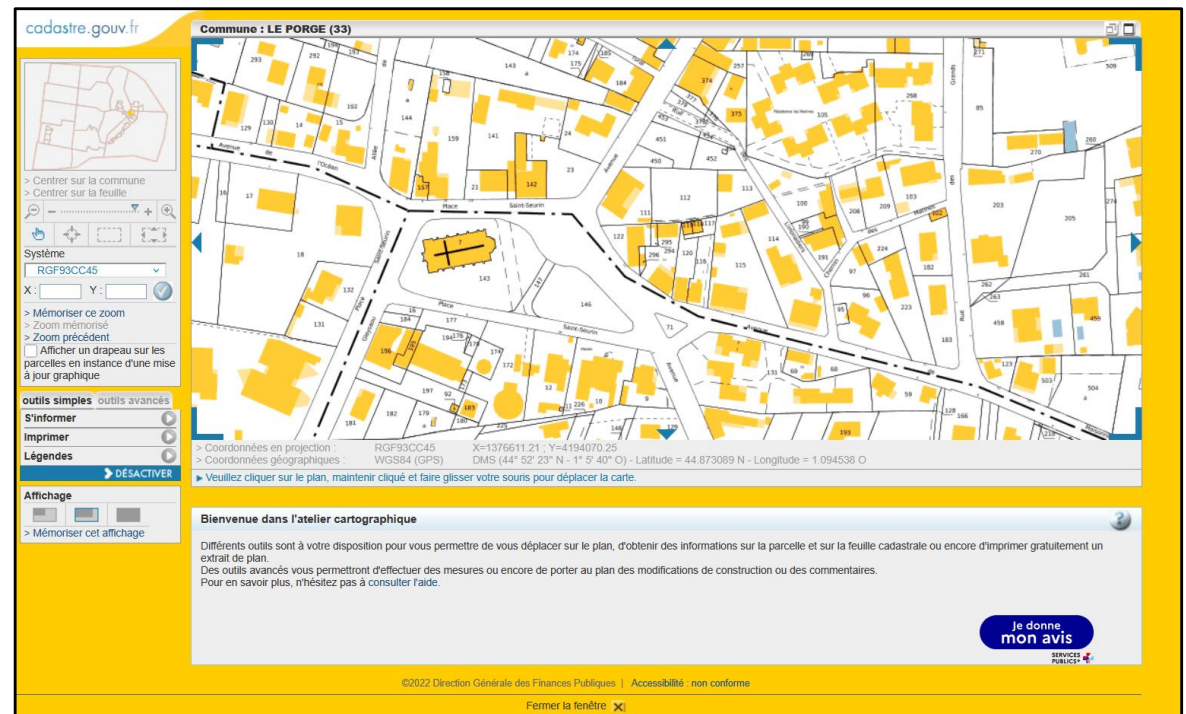
CADASTRAL MAP IT SYSTEM

FOR TOPOGRAPHIC PURPOSES

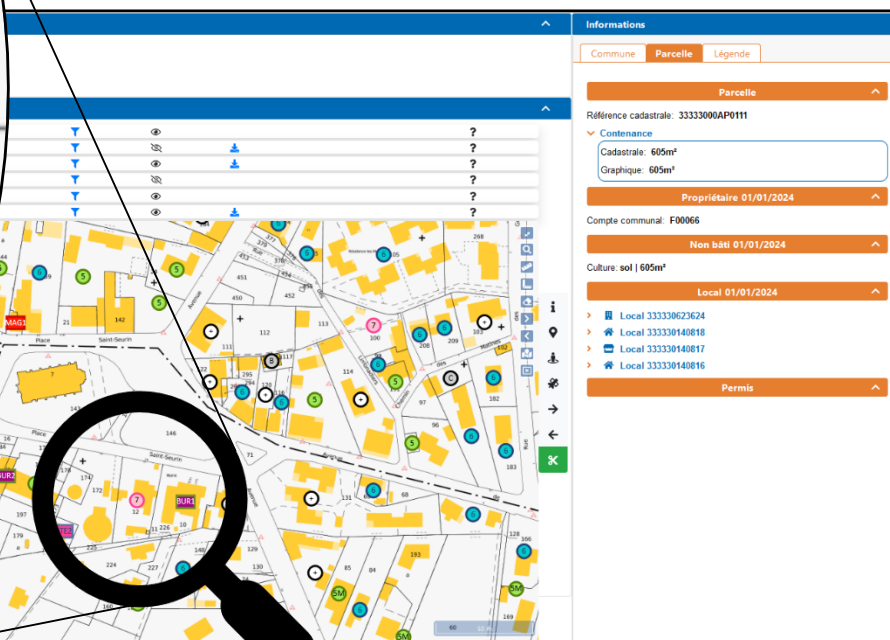
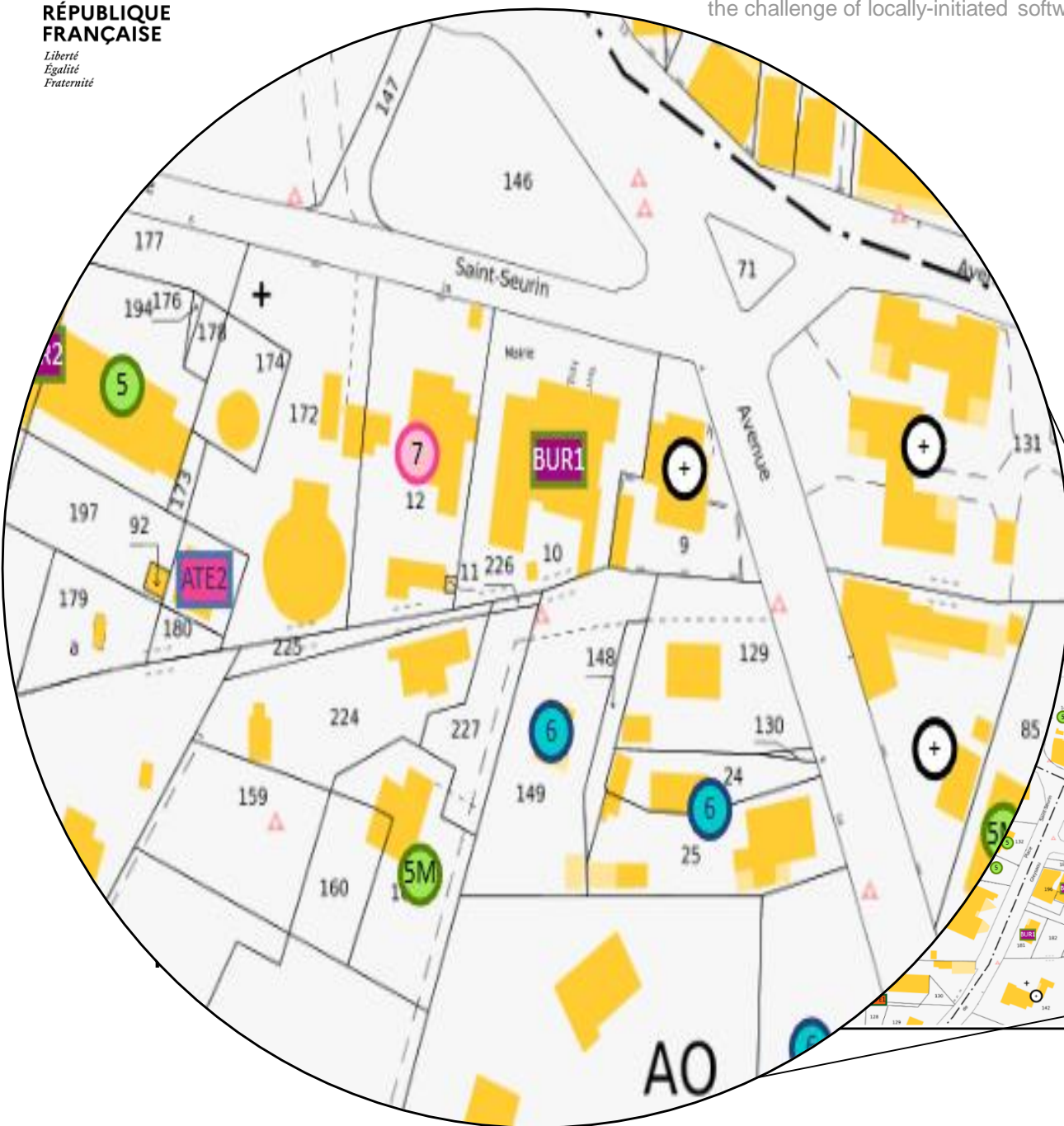


2008 SCPC

-
-
- Cadastral Map Consultation Service
- Free consultation of the entire national territory
- Possibility to order, pay and receive official digital cadastral map extracts in a secured personal account



- 1 Catégorie 1
- 2 Catégorie 2
- 3 Catégorie 3
- 4 Catégorie 4
- 5 Catégorie 5
- 6 Catégorie 6
- 7 Catégorie 7
- 8 Catégorie 8
- BA Piscine
- 4 BA Piscine associée à sa catégorie
- B Dépendance
- + Multiples catégories



CADASTRAL MAP IT SYSTEM

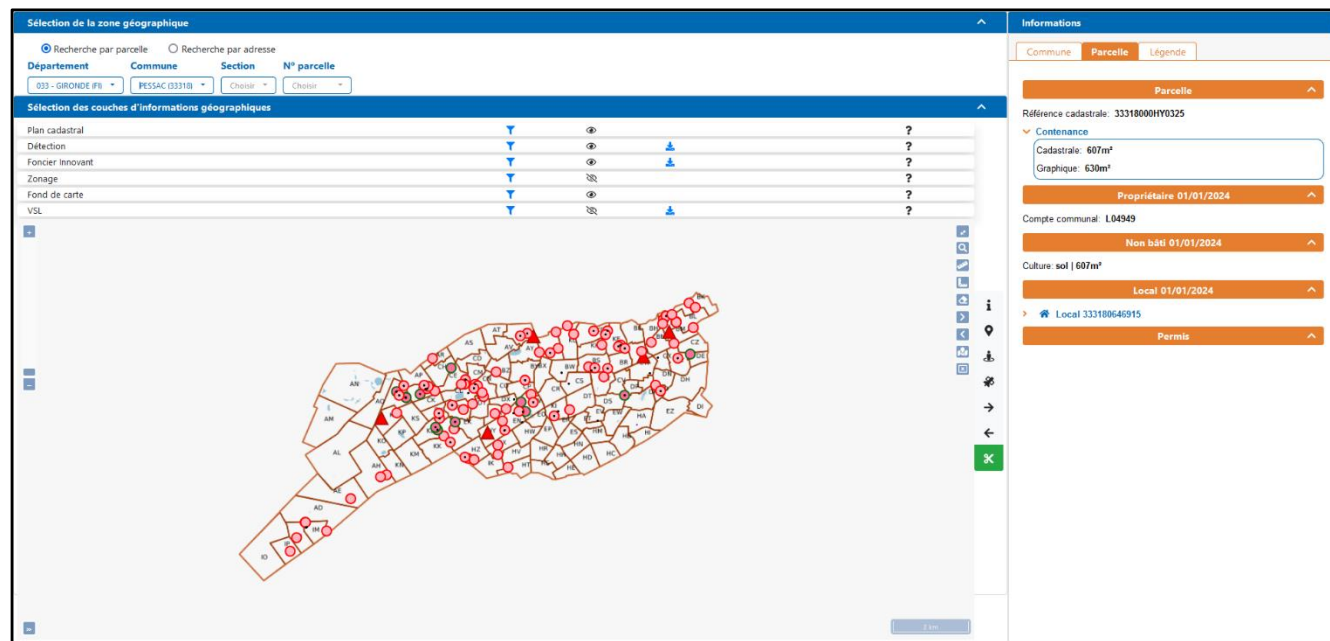
FOR TOPOGRAPHIC PURPOSES



2022 VSL

Checking and Monitoring
Premises

-
-
- For internal use only
- Harness AI and data cross-referencing to further enhance data reliability



AI for cadastral map

« FONCIER INNOVANT » PROCESS :

1.

Orthophotography



INSTITUT NATIONAL
DE L'INFORMATION
GÉOGRAPHIQUE
ET FORESTIÈRE



AI for cadastral map

« FONCIER INNOVANT » PROCESS :

2.

Artificial Intelligence



AI for cadastral map

« FONCIER INNOVANT » PROCESS :

3.

Human
analysis

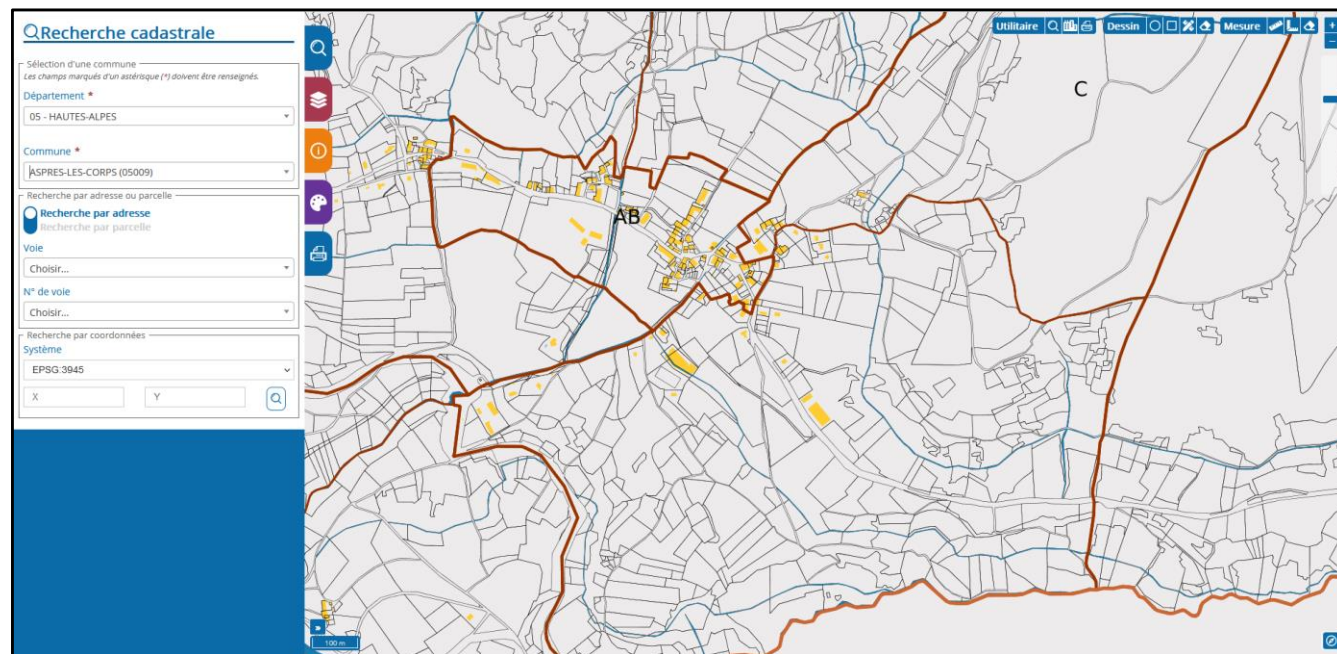


CADASTRAL MAP IT SYSTEM

FOR TOPOGRAPHIC PURPOSES

2023 Mapping client

- Internal use only
- Revamp the 2008 graphical user interface

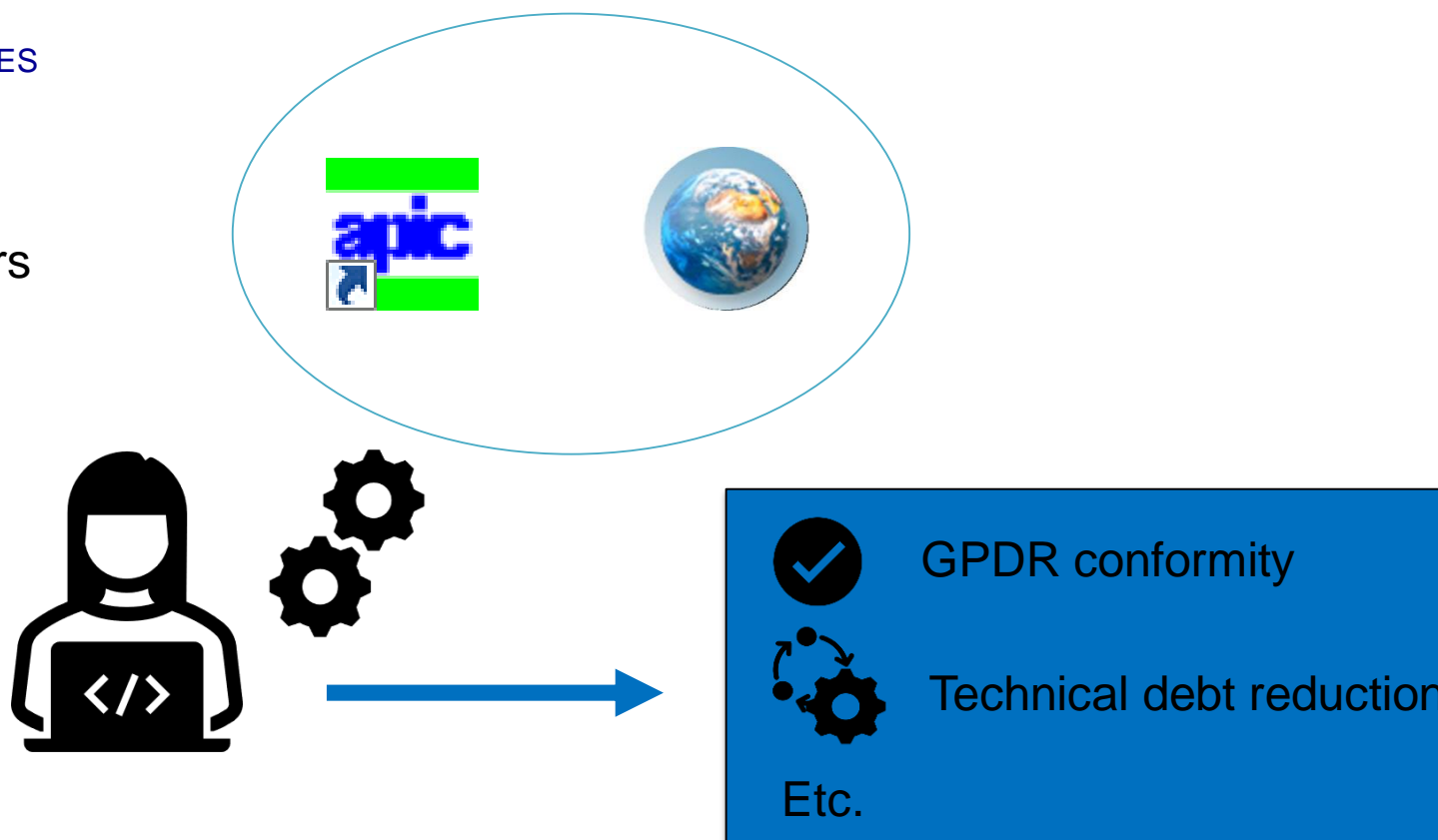


CADASTRAL MAP IT SYSTEM

FOR TOPOGRAPHIC PURPOSES

IT Department :

- 4750 staff members
- Managing 700 applications



3

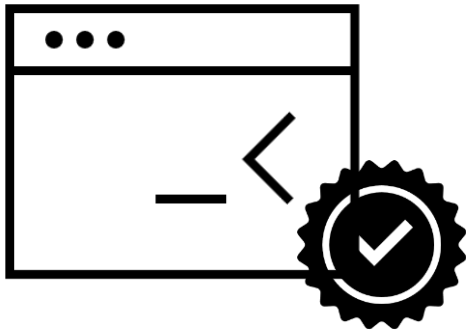
Cadastral map locally-initiated softwares

CADASTRAL MAP LOCALLY-INITIATED SOFTWARE

A CHALLENGE FOR THE RATIONALISATION

Locally initiated software (LIS) :

Any software or IT application produced outside the standardised and institutional framework of the IT department



**25 approved by the central cadastral
administration for topographical
purposes**

CADASTRAL MAP LOCALLY-INITIATED SOFTWARE

A CHALLENGE FOR THE RATIONALISATION

Conditions of emergence :

- 1) Uncovered need
- 2) IT skills outside of the IT department
- 3) Institutional will to harness these softwares in order to meet the aforementioned need

CADASTRAL MAP LOCALLY-INITIATED SOFTWARE

A CHALLENGE FOR THE RATIONALISATION

Pros :

- Excellent cadastral knowledge
- Fast development
- Ideal for prototyping

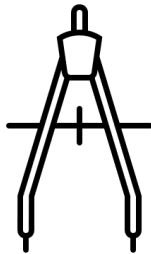
Cons

⋮

- Deviates from IT standards
- High vulnerability
- Virtually no documentation

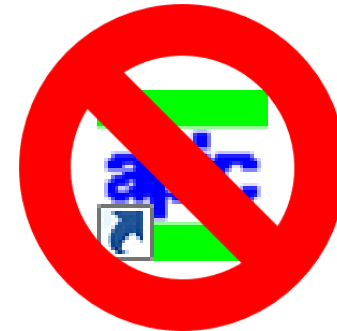
CADASTRAL MAP LOCALLY-INITIATED SOFTWARE

A CHALLENGE FOR THE RATIONALISATION



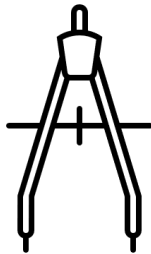
Creation of the cadastral
map

1993



CADASTRAL MAP LOCALLY-INITIATED SOFTWARE

A CHALLENGE FOR THE RATIONALISATION



Creation of the cadastral
map

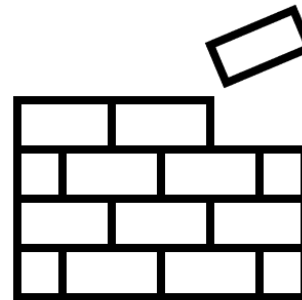
1998 -
2019



AutoCAD



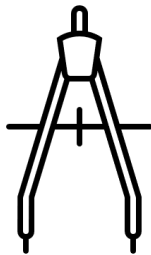
BricsCAD®



Locally-initiated
software layer

CADASTRAL MAP LOCALLY-INITIATED SOFTWARE

A CHALLENGE FOR THE RATIONALISATION



Creation of the cadastral
map

2019 -

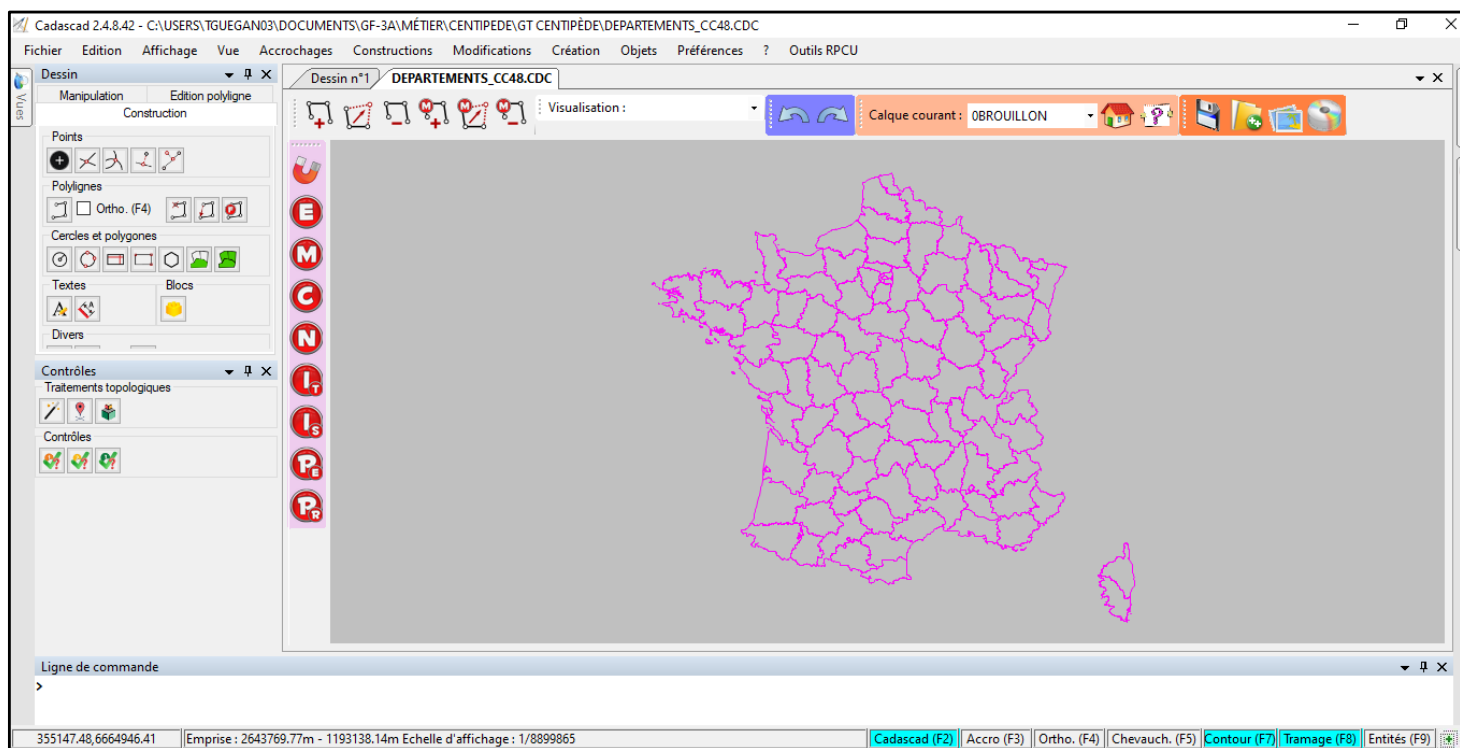
CadasCa

fully in-house developed
LIS



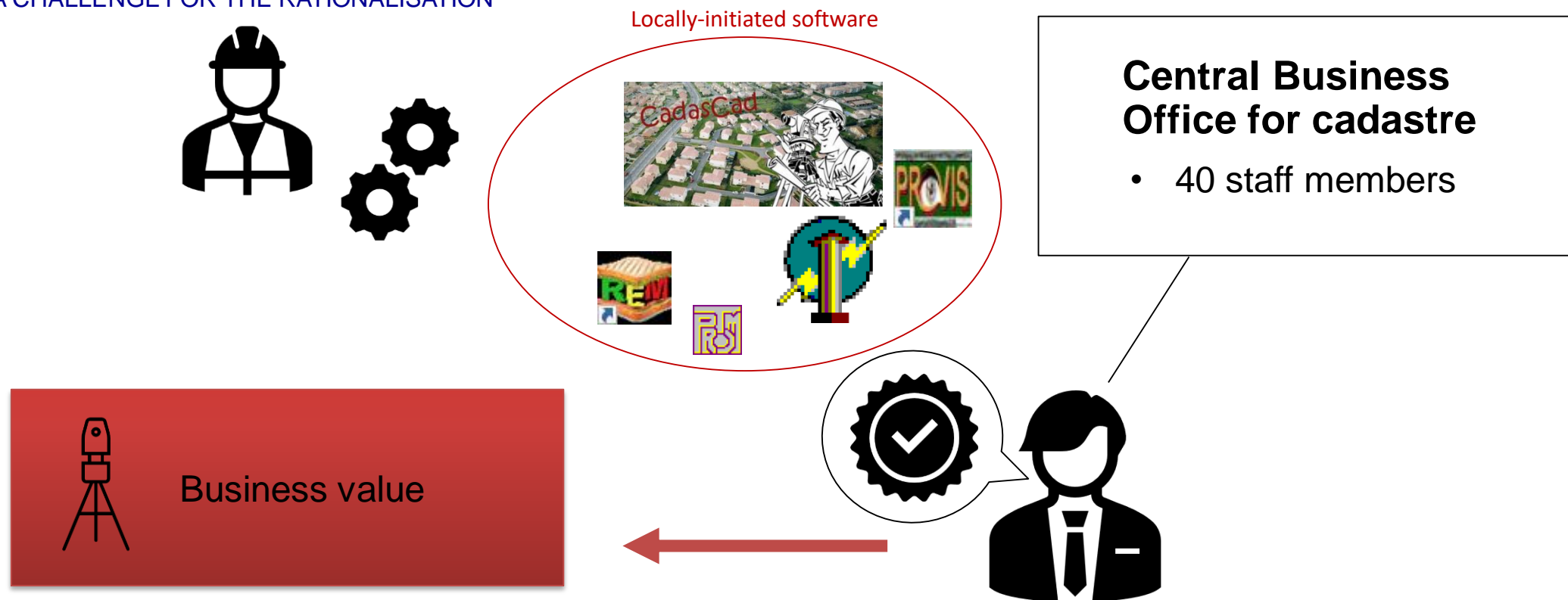
CADASTRAL MAP LOCALLY-INITIATED SOFTWARE

A CHALLENGE FOR THE RATIONALISATION



CADASTRAL MAP LOCALLY-INITIATED SOFTWARE

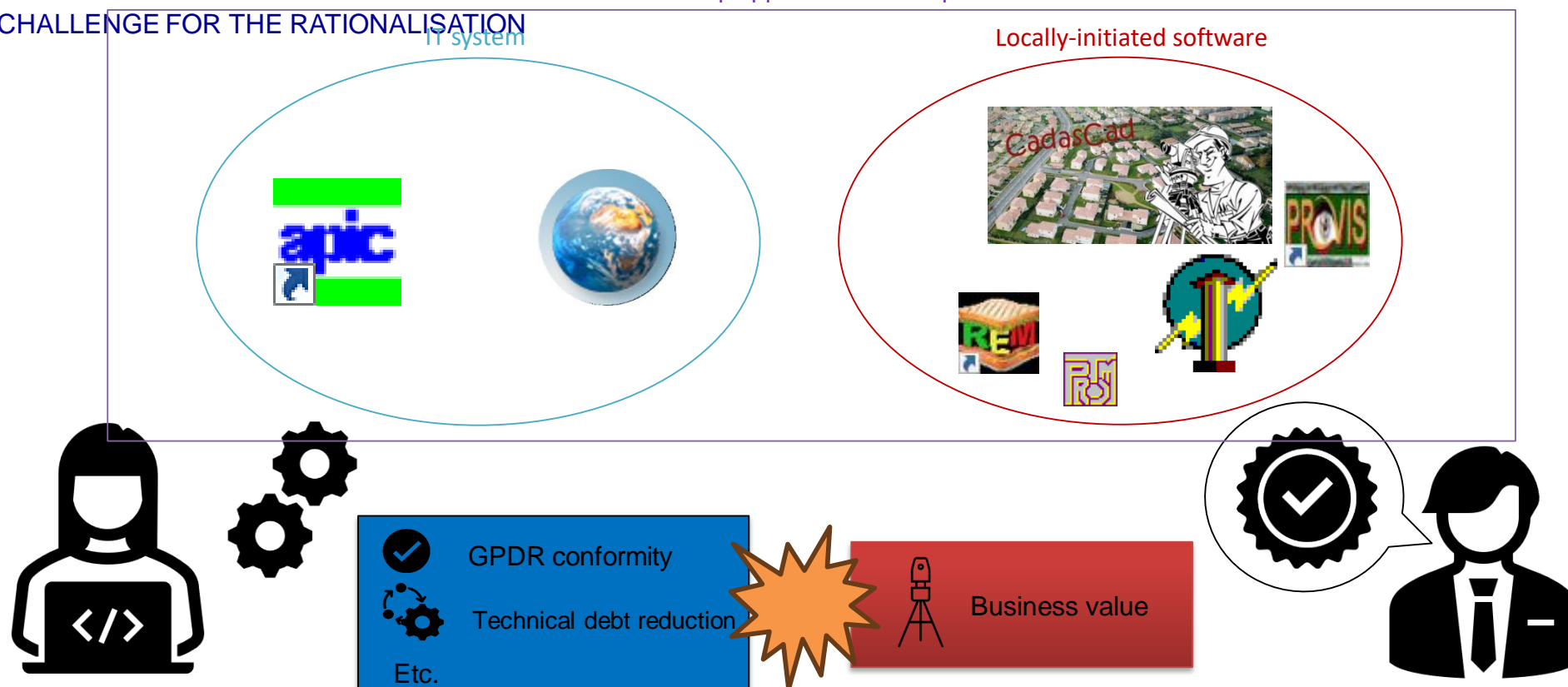
A CHALLENGE FOR THE RATIONALISATION



CADASTRAL MAP LOCALLY-INITIATED SOFTWARE

A CHALLENGE FOR THE RATIONALISATION

Cadastral map applicative landscape

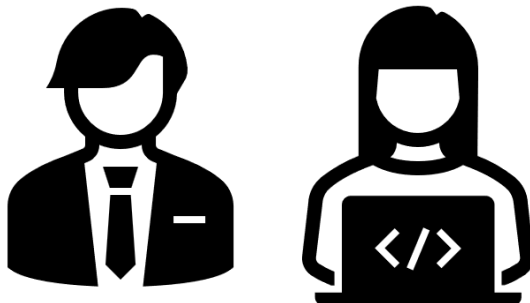


CADASTRAL MAP LOCALLY-INITIATED SOFTWARE

A CHALLENGE FOR THE RATIONALISATION

The rationalisation of the applicative landscape :

- Started in 2024
- Aims to develop a single software for the cadastral map



Integrated
solution



CADASTRAL MAP LOCALLY-INITIATED SOFTWARE

A CHALLENGE FOR THE RATIONALISATION

Take home message :

IT and business need to be as close as possible and speak as one.

Dziękuję
!
Thank you
!