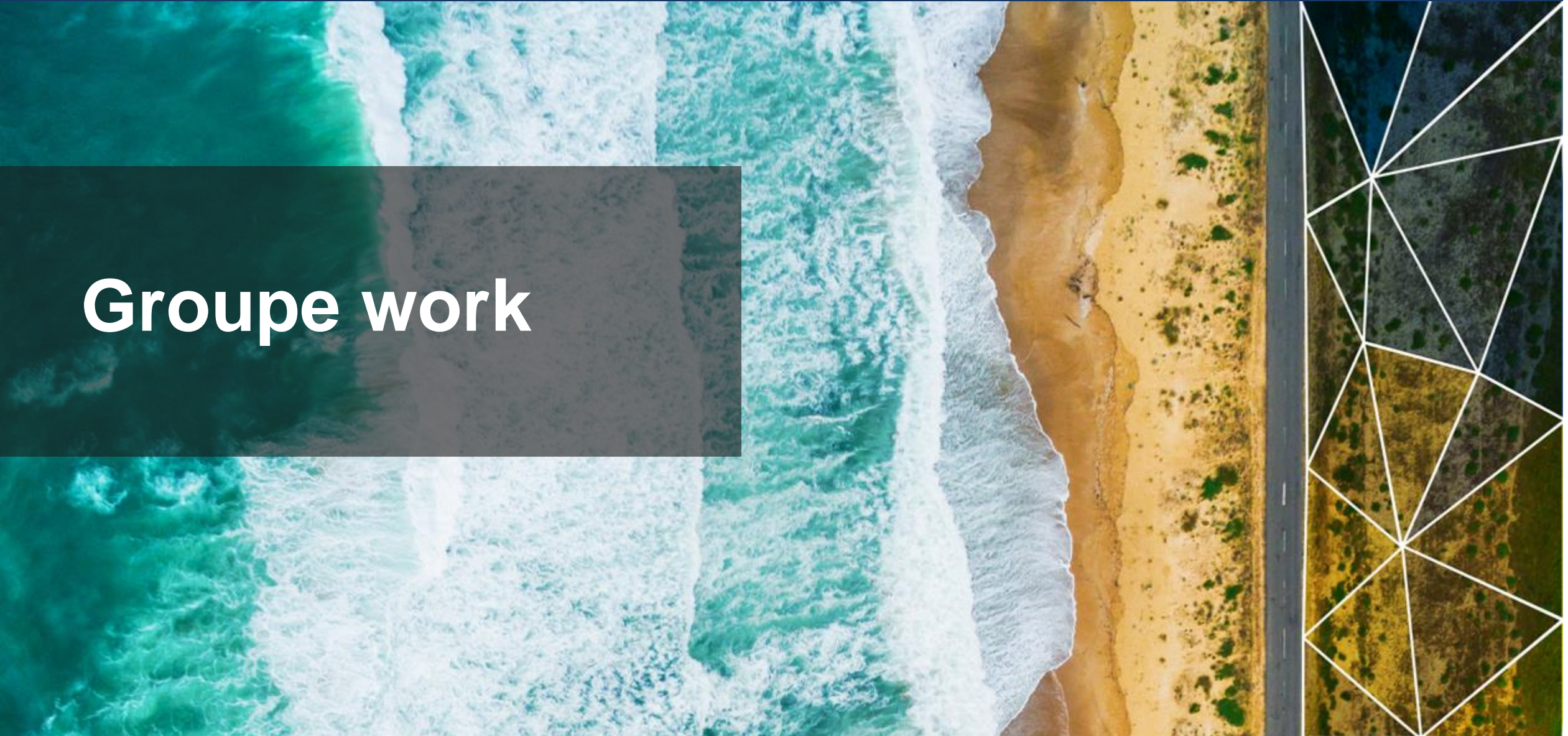


Groupe work



Results from CZ / GER / BE / LAT / SE / IE / CH / F

Not really, some uses Excel
SE has shown us thier solution

YES :-)

- Helps to plan future work
- Make transparent where we are with our data quality. Addressing non-GIS users more “management” – view
- See how the quality changes (improves) over time.
- Helps to find systematic errors.
- We have to define a data model to define our results and measurements.
- We can also make visible what changed in our data or products since the last “release”
- Visualisation of the quality has to become something normal in data production.
- Visualisation may no be a map, it could be also a chart
- Dashboards should be centralised for multiple sources
- Quality could be also different in different areas for the same information / object type / feature / vertex

- **ArcGIS Online**
- **FME**
- **SQL**
- **JIRA / Confluence**
- **ORACLE APEX**
- **Excel**
- **Web Tools for charting like NL showed us**

- **There are a lot, but the tool is not the solution, it supports the process**