

# 2030 Agenda on Sustainable Development Goals

Jacquie McGlade



**Maasai Mara University**  
*eng'eno e puaan*



**Sekenani Resilience and Space Research Centre**



**UCL**

# Global Framework of Spatial Indicators

## Social Development

### Child Nutrition



### Infant mortality



### Community health



## Economic Development

### Per capita GDP



### Youth employment



### Access to markets



## Environmental Sustainability

### Climate + energy



### Healthy ecosystems

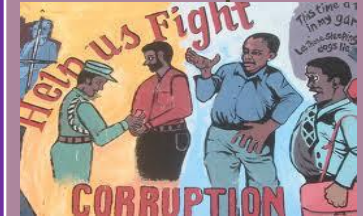


### Green chemicals



## Governance, peace and security

### Anti-corruption



### Peace for all



### Security for all

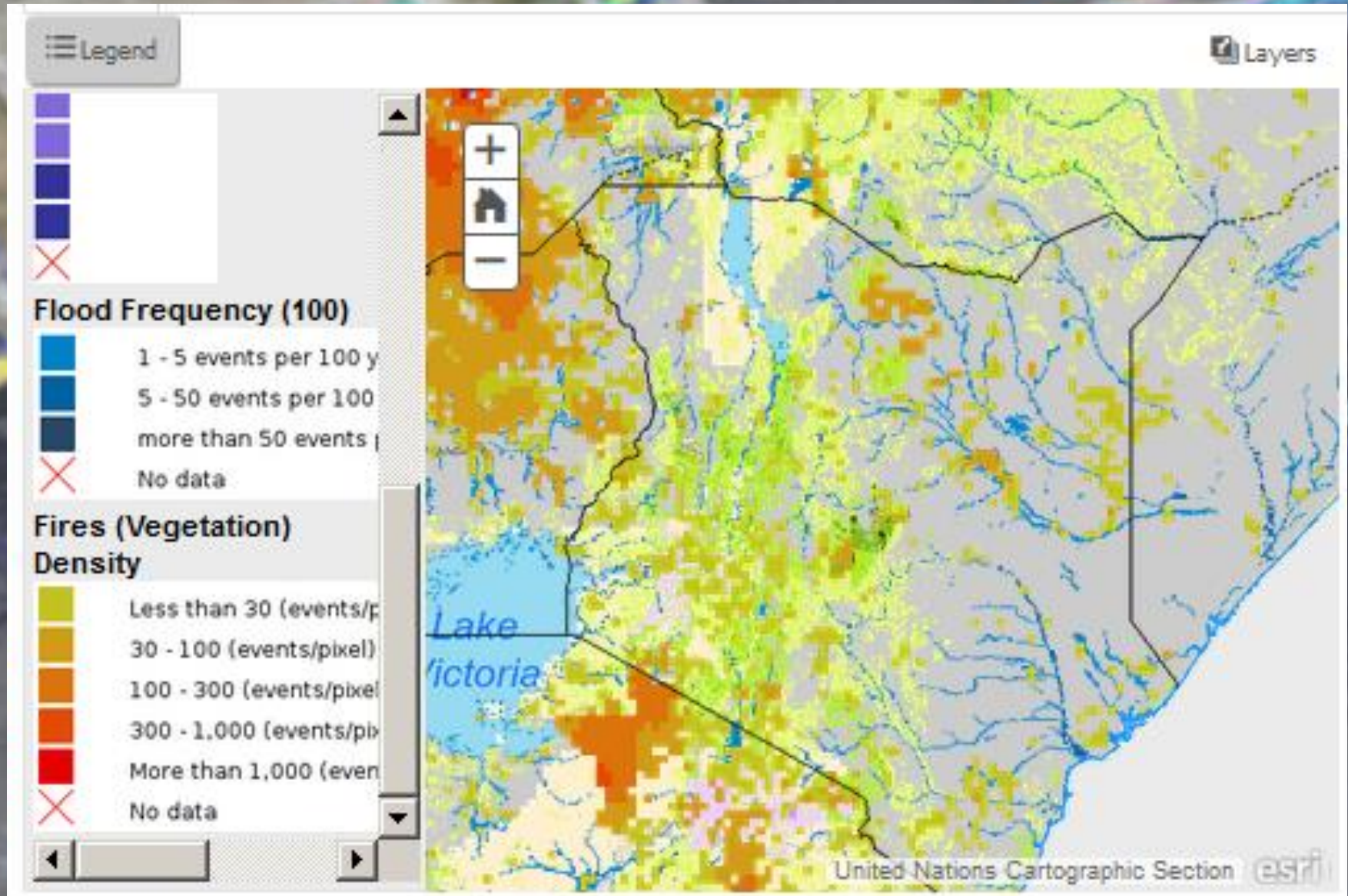




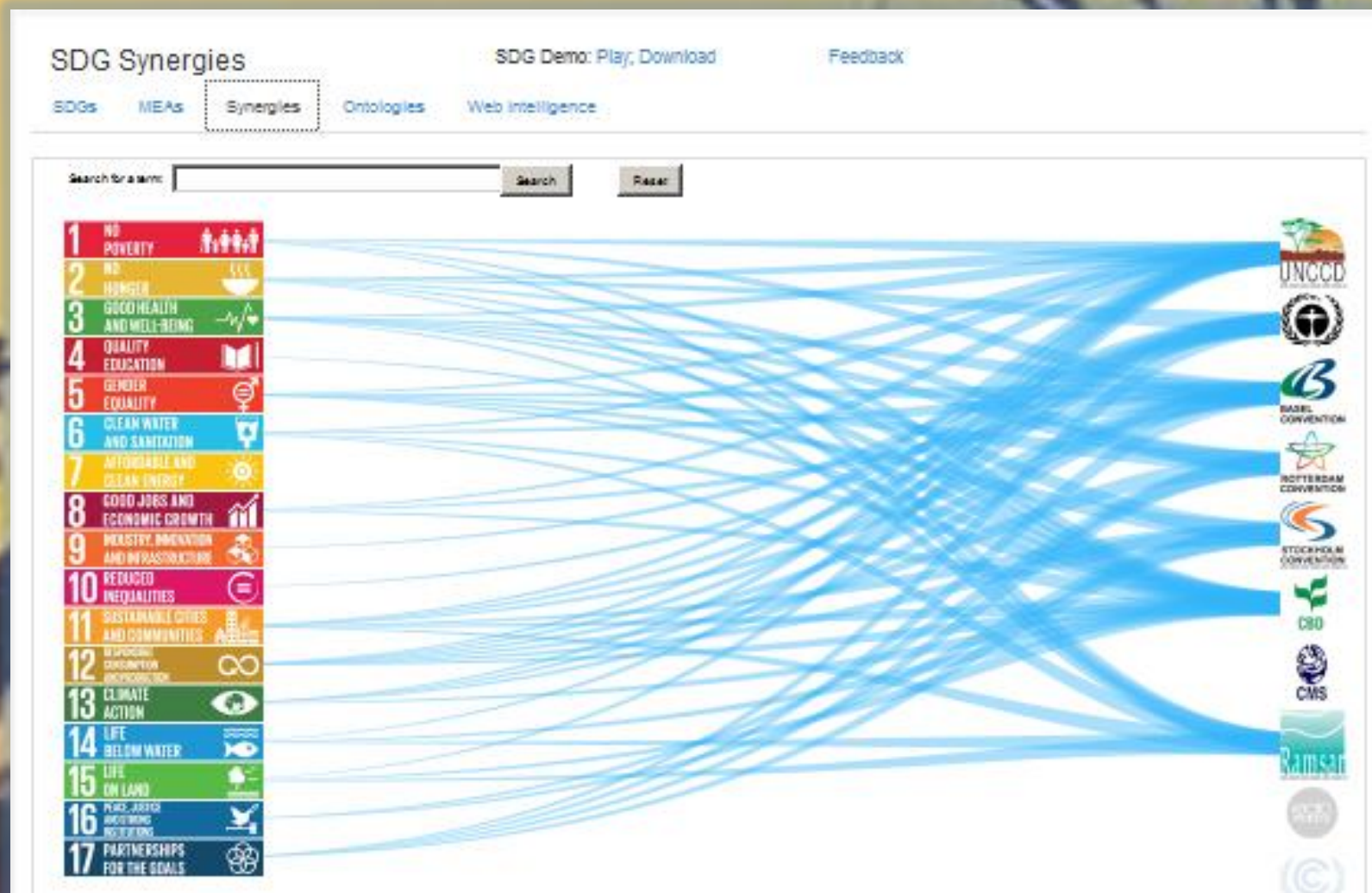




# Disasters, Conflicts and Risk Mapping



# Synergies with Multilateral Agreements





# Mapping Land Access

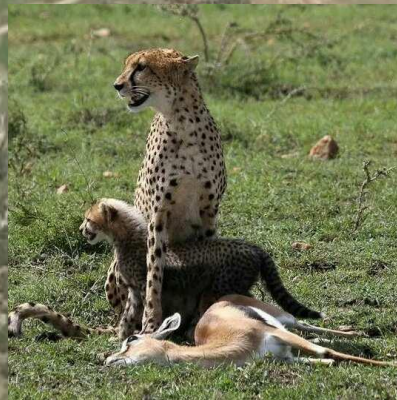




Maasai Mara University  
Research Centre Site  
Plot 3249 10.65ha



Ewangan Maasai Village





## University College London,

Faculty of Engineering % Institute of Global Prosperity

Gower Street, London, WC1E 6BT

[jacquie.mcglade@ucl.ac.uk](mailto:jacquie.mcglade@ucl.ac.uk)

+44(0)7772 862 980



# Maasai Mara University

*eng'eno e puaan*



## **Sekenani Resilience and Space Research Centre**

[j.mcglade@mmarau.ac.ke](mailto:j.mcglade@mmarau.ac.ke)

+254 716397799

P.O. Box 861-20500, NAROK

[www.mmarau.ac.ke](http://www.mmarau.ac.ke)