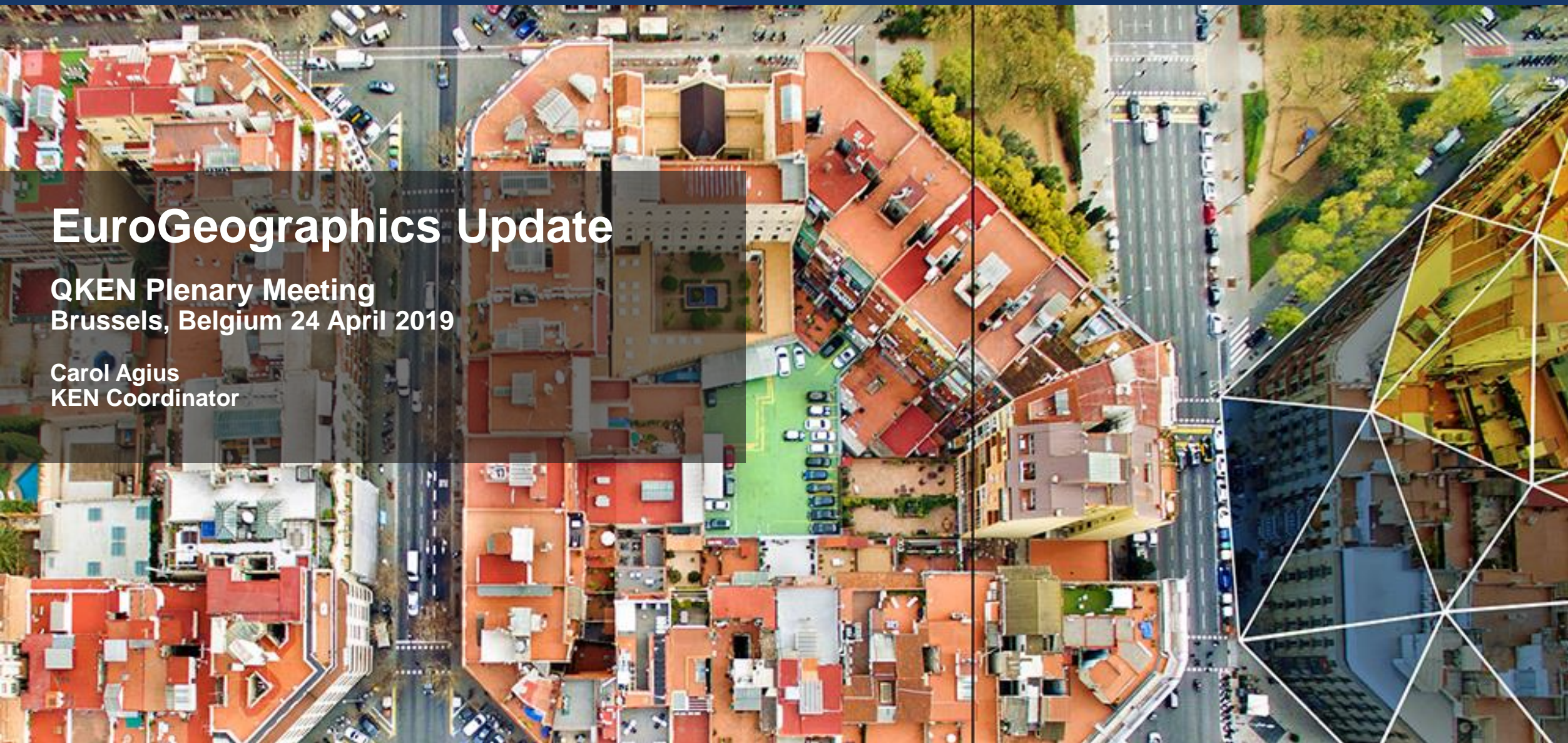


EuroGeographics Update

QKEN Plenary Meeting
Brussels, Belgium 24 April 2019

Carol Agius
KEN Coordinator



Connecting you to maps, geospatial and land information for Europe

EuroGeographics – Our Business

63 
members

from the whole of geographical Europe

46 
countries

Members invest over
€1.5B 
each year in the
development of
geo-information

Relied on by
European
Commission
Businesses
& Citizens



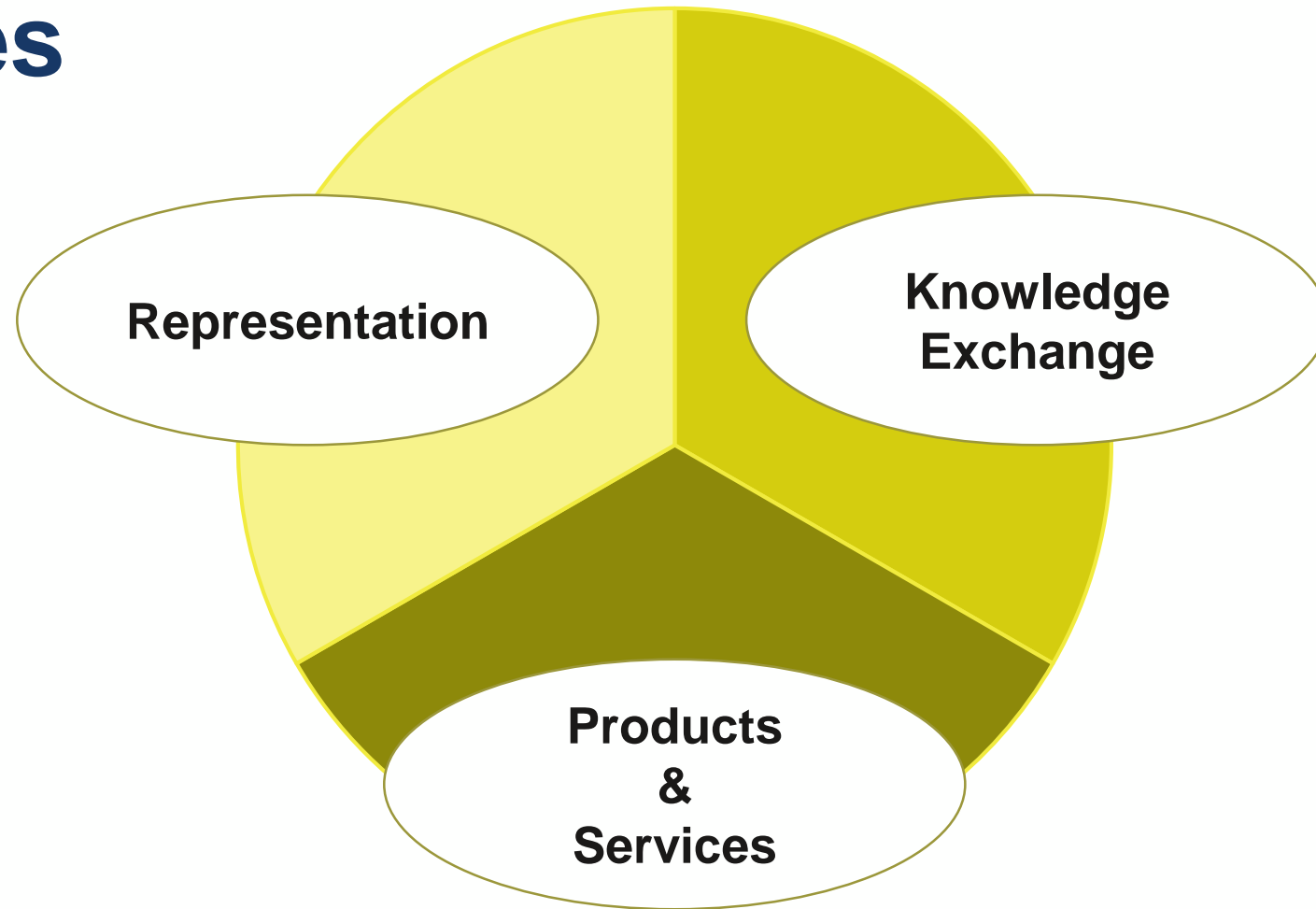
Share best practice
through
expert
knowledge
exchange
networks



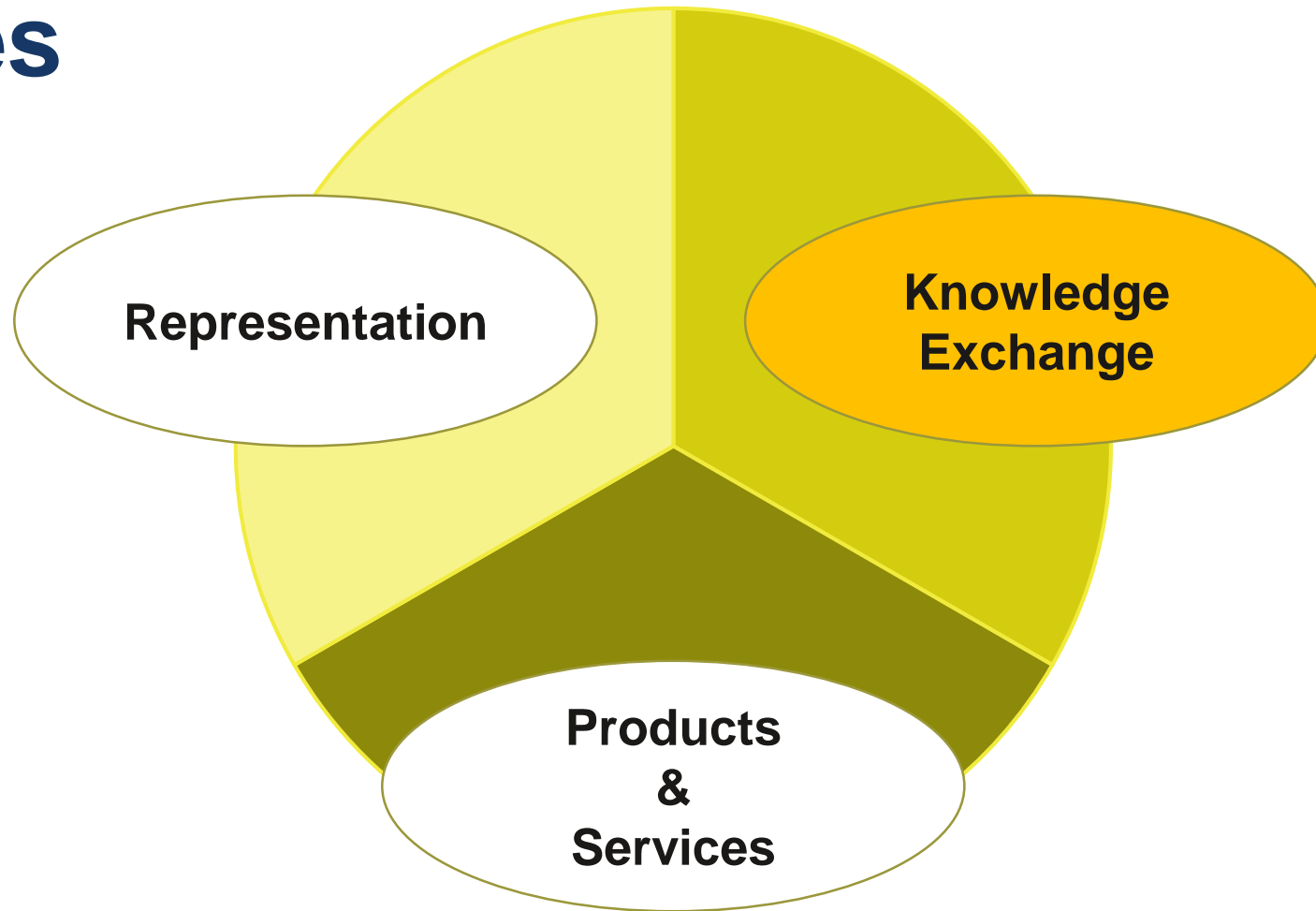
66,000
people and
over are
employed by
EuroGeographics members



Activities



Activities



Many Meetings

- Twenty three knowledge exchange events in 2018
- Attracting over 800 participants
- All KENs planned and organised at least one event in 2018
- KEN meetings, joint events, international workshops, webinars and more
- Reporting about these activities to our members in two dedicated reports twice a year



Contributing to the KEN library

Drafting and sharing reports and papers:

- Disruptive Technology and its impact on NMCAAs
- Implementing ISO Standards in NMCAAs
- EuroGeographics Information Paper on recasting of PSI Directive
- Information Paper on the Proposal for a regulation establishing the space programme of the Union



Business Interoperability KEN

KEN Participation Questionnaire: there is a significant participation and topic overlap by the Business Interoperability KEN and the Policy KEN.

In fact all BiKEN meetings organised in the last two years have been jointly held with the PoIKEN.

Merge the BiKEN with the PoIKEN. Given the this will allow for a more efficient management of the KENs and broaden the scope of the larger, combined KEN.



Super KEN Workshop

A cross-KEN event right after the EuroGeographics Extraordinary General Assembly in Leuven 15 – 16 May.

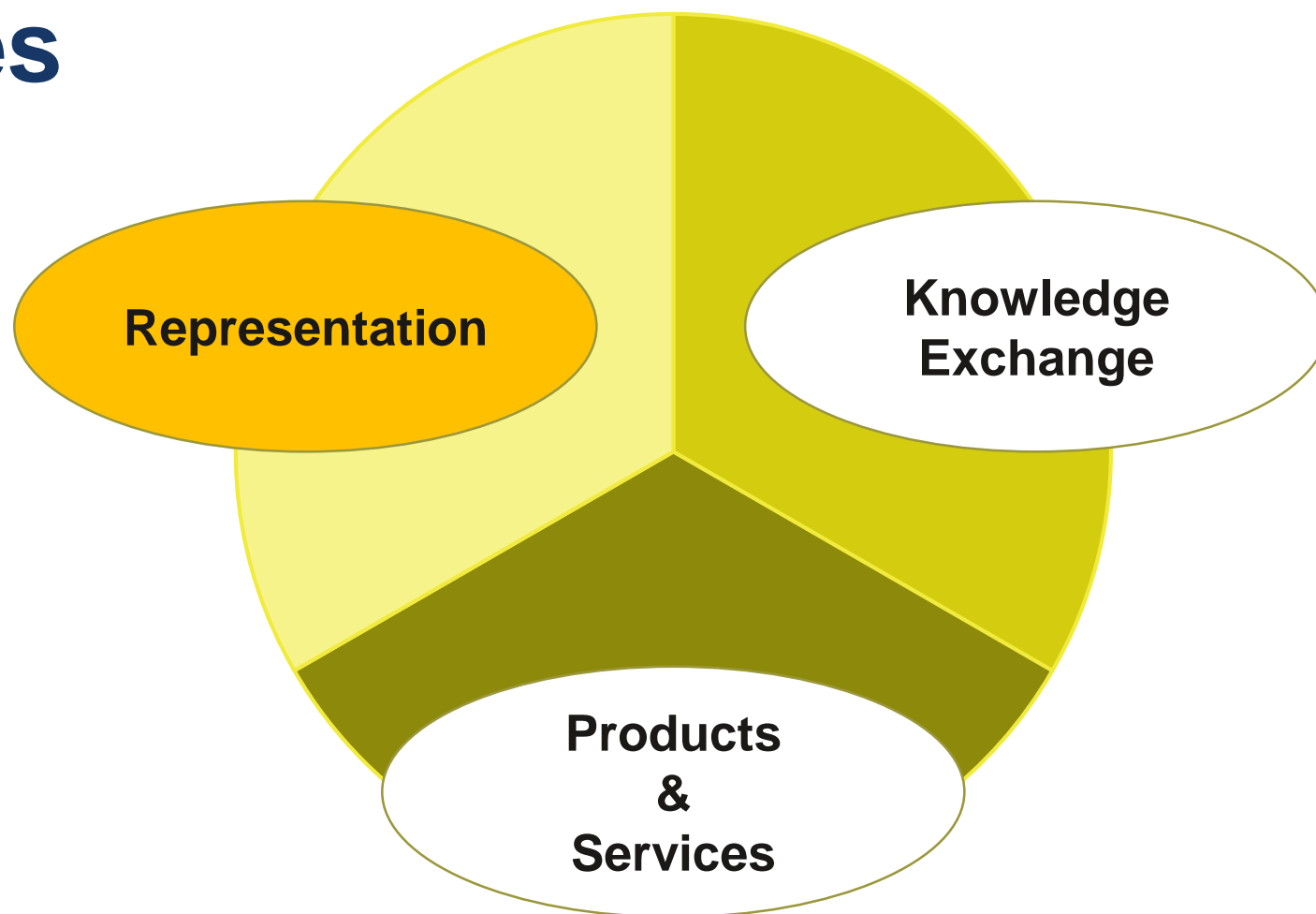
The Super KEN Workshop is primarily aimed at topics which interest the participants of the PoKEN, CoKEN, INSPIRE and QKEN.

The focus topics are PSI & Open Data, Data Harmonisation & Authoritative data, and Space Regulation & Copernicus.

The aim of the Super KEN workshop is to provide a forum for members to discuss topics and issues that cut across the various knowledge exchange networks.



Activities



EuroGeographics at DGI conference

EuroGeographics was delighted to host a panel today at the leading global geospatial intelligence conference, DGI Europe 2019.

Mick Cory, Secretary General and Executive Director was joined by Ingrid Vanden Berghe, Head of the NGI Belgium, Martins Liberts, Head of Latvian Geospatial Information Agency and Dorine Burmanje, Chairman Executive Board, Cadastre, Land Registry and Mapping Agency The Netherlands (Kadaster) to discuss trusted data and international collaborations.



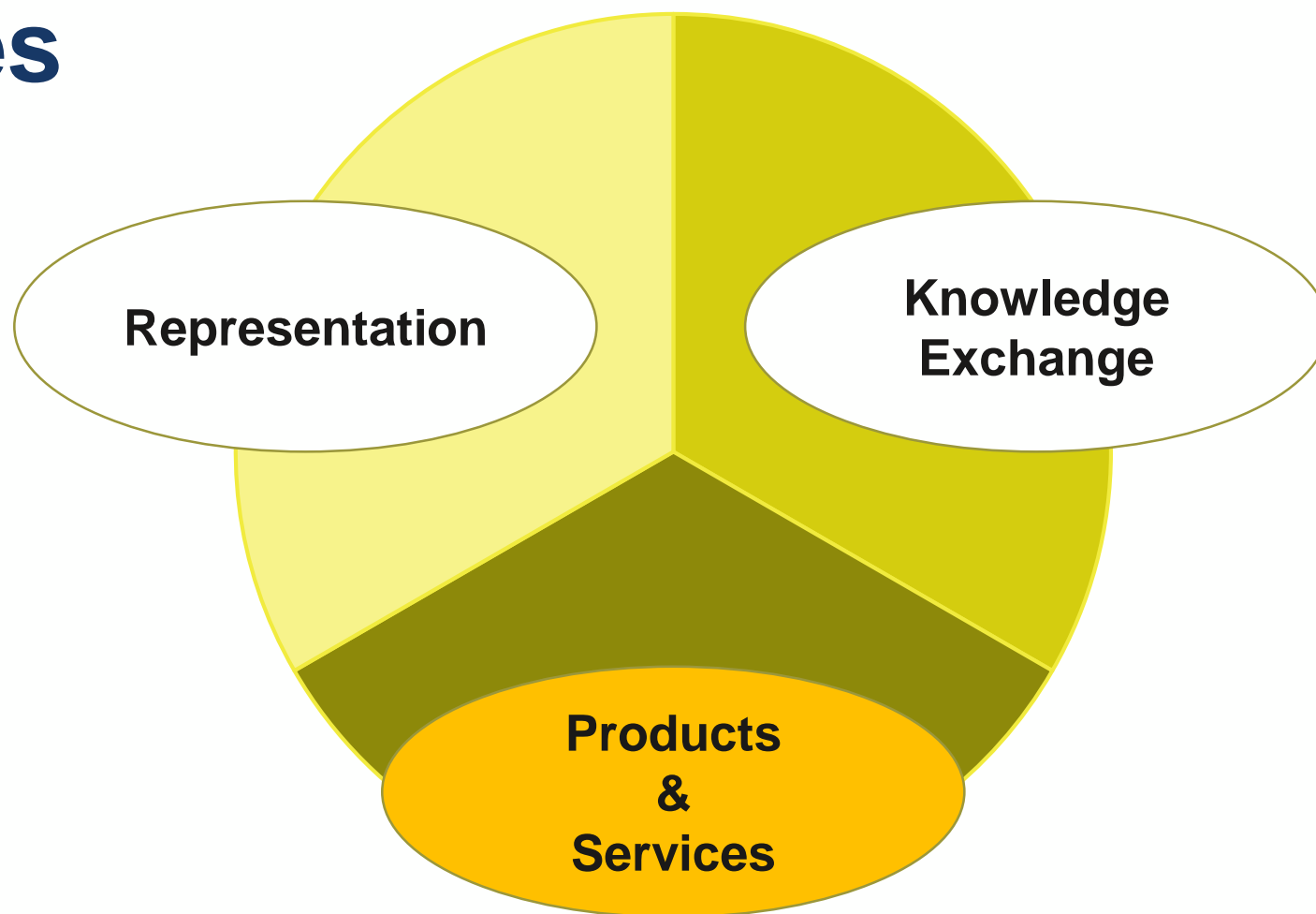
EuroGeographics at Geospatial World Forum

As a strategic partner of the Geospatial World Forum in Amsterdam EuroGeographics facilitated a panel comprising our President and five Management Board Members

The panel discussed how European NMCAs are leading the way to ensure geospatial data is an integral part of the growing digital economy, and covered important topics such as the importance of authoritative data from our members, how geospatial and cadastral data contributes to the data economy, the democratisation of data and the importance of collaboration, nationally and internationally.



Activities



Open ELS partner meeting

The Open ELS partners met in London to hear the latest news from the Project and to discuss the activities that need to be completed before it finishes at the end of April 2019.

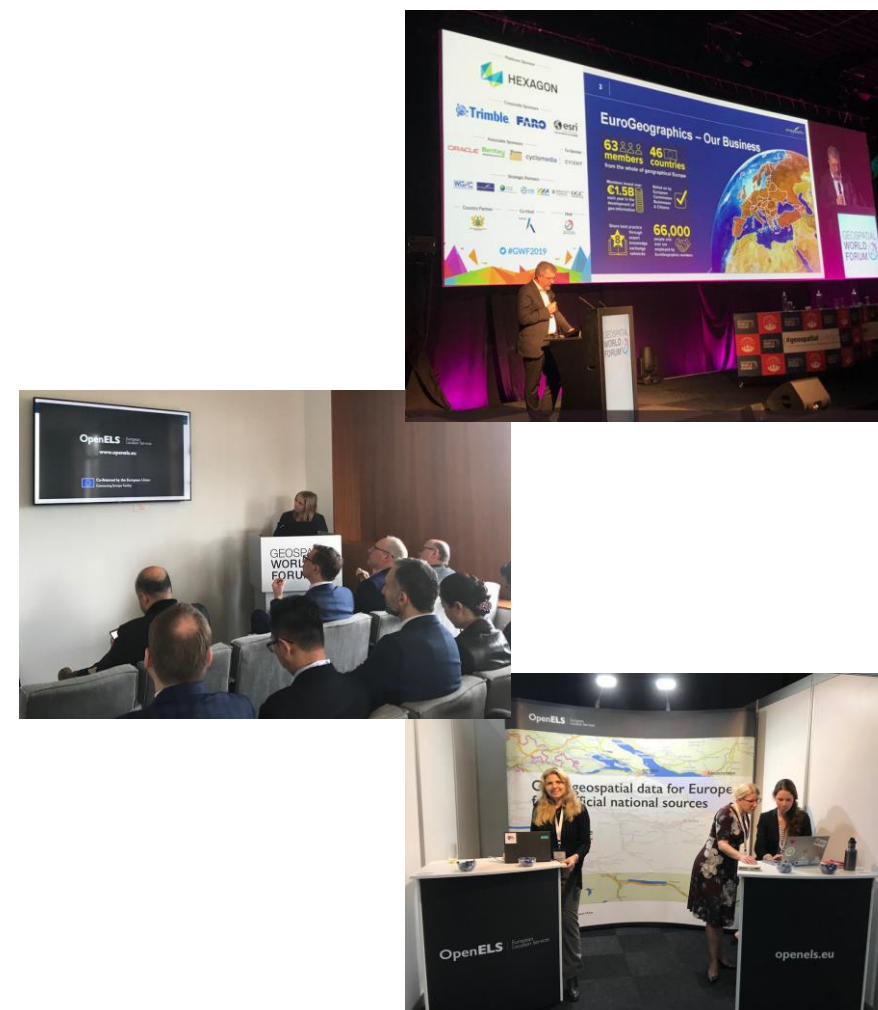
www.openels.eu



Open ELS Project unveils first test services

EuroGeographics launched demonstration and test services from the Open European Location Services (ELS) Project on the 2nd April at Geospatial World Forum (GWF) in Amsterdam with demonstrations available in the exhibition.

These services include EuroGlobalMap as a web feature service, Open Cadastral Index Map from some countries and pan-European regional gazetteer of geographical names



What do OpenELS and CRD have in common?

- Provide authoritative reference data for cross border usage
- Single point of contact

- Two different approaches:
 - Provide open data via service → OpenELS
 - Provide data as dataset → CRD

CRD content (for first version)

Themes

- **Hydrography:** Watercourse, StandingWater, LandWaterBoundary
- **Transport Network:** Road Network, Railway Network including RailwayStationNode

Scale, positional accuracy

- **Multiscale approach:** data from 1:10.000 to 1:50.000 will be accepted
- **Positional accuracy:** about 5-15m (or better)

Coverage

- Priority 1: EU28
- Priority 2: other EEA 39
- Priority 3: other European countries

What comes next?

- Prototype available since end of November 2018
- Next Region ready by September 2019

Evaluation of production process / lessons learned

- From data delivery by NMCAs
- From production process
- Feedback / requirements from (potential) users

Plans for the future

- Additional themes
- Additional coverage
- Regular updates of all themes
- **Step from Prototype to Product needs investment →EuroGeographics is looking for funding**

Development regarding EuroGeographics data supply contract to European Commission

EuroGeographics supplies the European Commission with pan-European geospatial data and services through a commercial agreement with Eurostat. We have supplied geospatial data to the European Commission, under commercial agreement, since 2005 and the current four year agreement was signed in 2015.

Last year, we were invited to participate in a negotiated procedure for “GISCO acquisition of topographic data layers” - however the contract awarded was only for administrative and statistical regions, to be provided by EuroBoundaryMap. This means that EuroRegionalMap is no longer required.

Whilst EuroGeographics will continue to produce our pan-European products, as there are a number of other customers for these, we will nevertheless need to review our future product strategy carefully, taking into careful consideration our dialogue with the Commission, and our members’ clear desire that we do not become an operational business. Within this context it is important that we review our approach to European Location Services too.

Further work is now required by EGHO to analyse and fully assess the budgetary and strategic implications of this decision, and to engage with the Commission on the way forward. Our Extraordinary General Assembly in May 2019 will give us an opportunity to more fully brief Members on these implications, our plan to address them, and any further requirements or assistance required from our members to help address these issues.

Head Office changes



Securing a future for your geospatial data

#mapsforeurope



Thank you