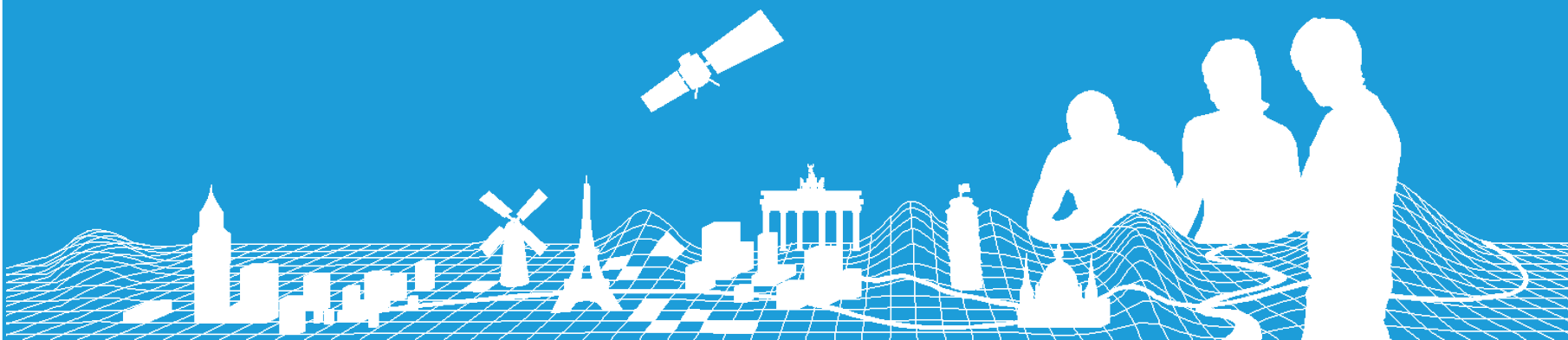


Technical Issues for EBM and ERM

Alexander Reichelt and Jörgen Spradau, BKG
EG Producer Meeting, Lisbon
14th/15th November 2017



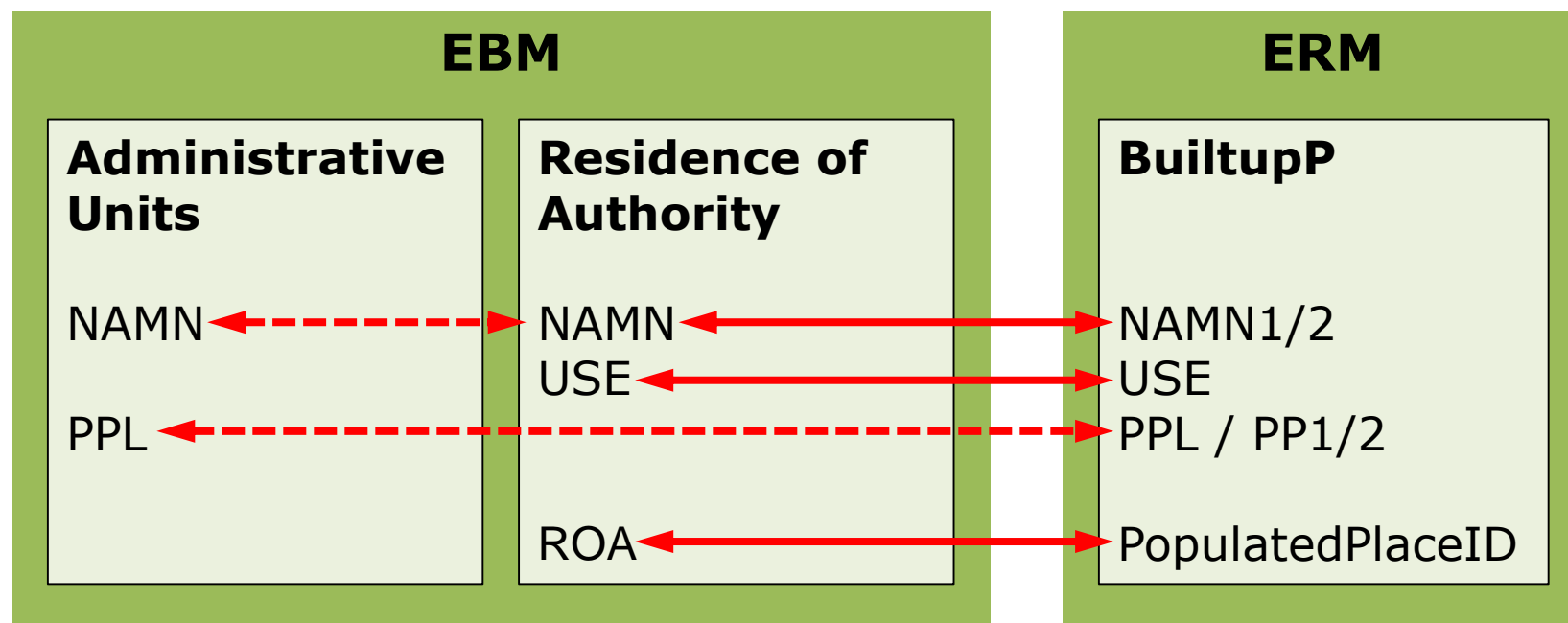
Content

- Consistency: EBM - ERM theme POP
- Population figures
- Area figures in EBM
- LAU/NUTS matching
- New LAU levels



Consistency: EBM - ERM theme POP

- Strong correlation between EBM and ERM/POP



Consistency: EBM - ERM theme POP

- Reality
 - Differences in actual datasets
- A wide variety of reasons
 - NAMN issues: different spellings, different use of abbreviations
 - USE issues: different use for EBM and ERM
 - PopulatedPlaceID not unique in BuiltupP
 - Missing features in EBM and/or ERM
 - Displacements of features in both products
 - Wrong ID matching between features

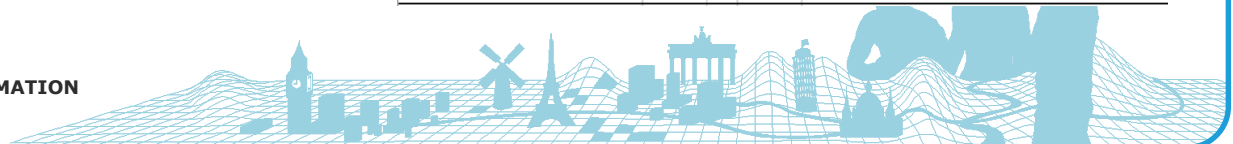


Consistency: EBM - ERM theme POP

- Objective: Consistent datasets for production year 2018
 - Update ERM v12 → POP
 - Update EBM v13 → Residence of Authority



EBM: USE			ERM: USE	
1st order (country level)	1	= 23	International	
2nd order	2	= 26	Primary/ 1st order national level	
3rd order	3	= 30	Secondary/ 2nd order national level	
4th order	4	= 31	Tertiary/ 3rd order national level	
5th order	5	= 111	Fourth/ 4th order national level	
6th order	6	= 112	Fifth/ 5th order national level	



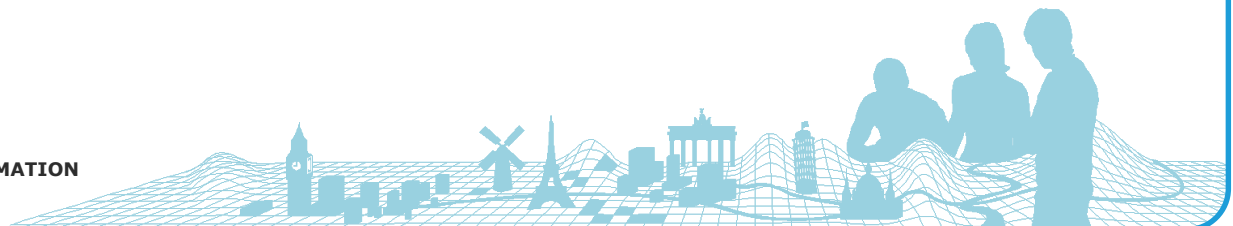
Population figures



- A major user demand
 - Exact population figures → PPL
 - Up-to-date population figures

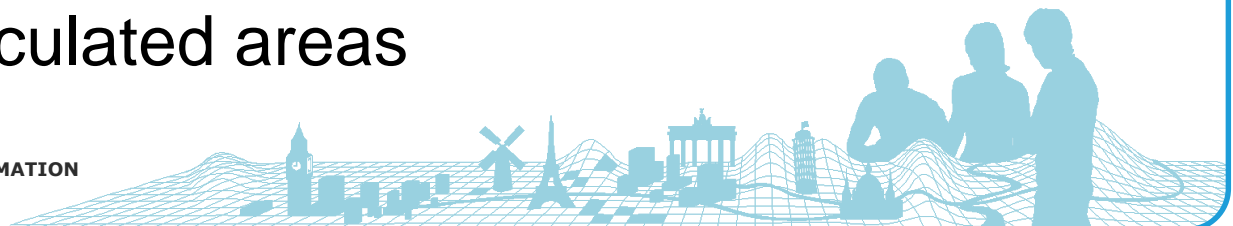
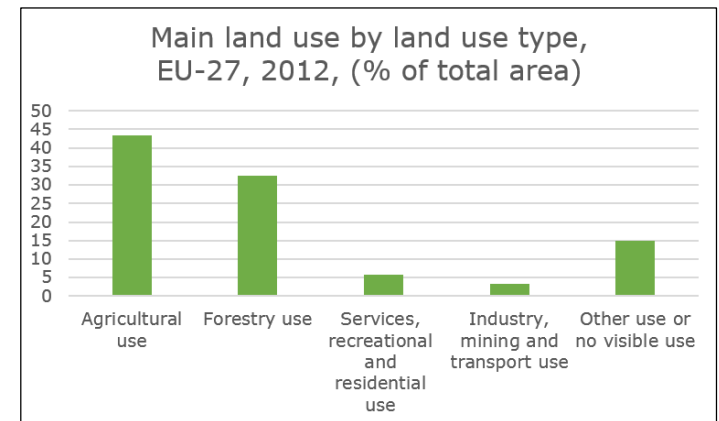


- Update population figures in table EBM_NAM:
 - Please get in contact with your National Statistical Institute
 - Official population figures published for all countries (Census 2011)
<https://unstats.un.org/unsd/demographic/sources/census/censusdates.htm>



Area values in EBM

- Please get in contact with your National Statistical Institute
→ Official area values
- Additional information needed
 - Water areas are included?
 - Exclusion areas?
 - Special cases?
- If official area values are not contributed
→ PMT will calculate area automatically
→ Differences between official values and calculated areas



LAU/NUTS matching

- Correct matching with statistical codes is a main feature of EBM
- Keep in close contact with your National Statistical Institute to ensure that NSI and NMCA report the same administrative units for the specific reference date
 - EBM will only match with statistical data if both refer to same reference date
- Changes:
 - NUTS 2016 regulation ([link1](#), [link2](#))
 - Only one LAU Level exists from now on

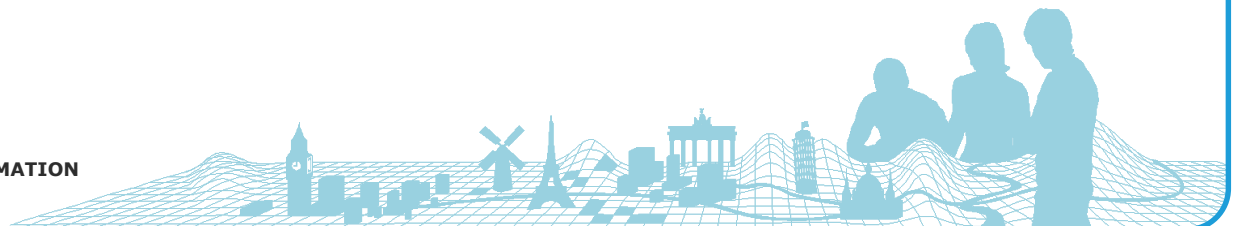


New LAU levels

	LAU level
AT	2
BE	2
BG	1
CY	2
CZ	2
DE	2
DK	1
EE	2
EL	1
ES	2
FI	2
FR	2
HR	2
HU	2

	LAU level
IE	2
IT	2
LT	1
LU	2
LV	2
MT	2
NL	2
PL	2
PT	2
RO	2
SE	2
SI	2
SK	2
UK	1

[complete table](#)



Thank you for your attention



Contact:

Alexander Reichelt and Jörgen Spradau
Federal Agency for Cartography and Geodesy
Richard-Strauss-Allee 11
60598 Frankfurt am Main / Germany

Email: ebm@bkg.bund.de

