

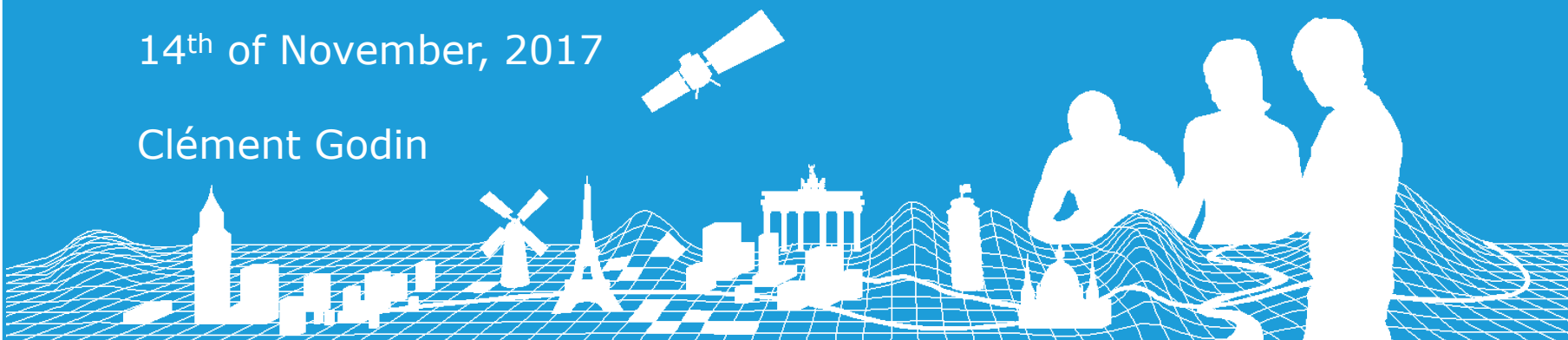
# EGM

## Review of 2017 production Update plan for 2018

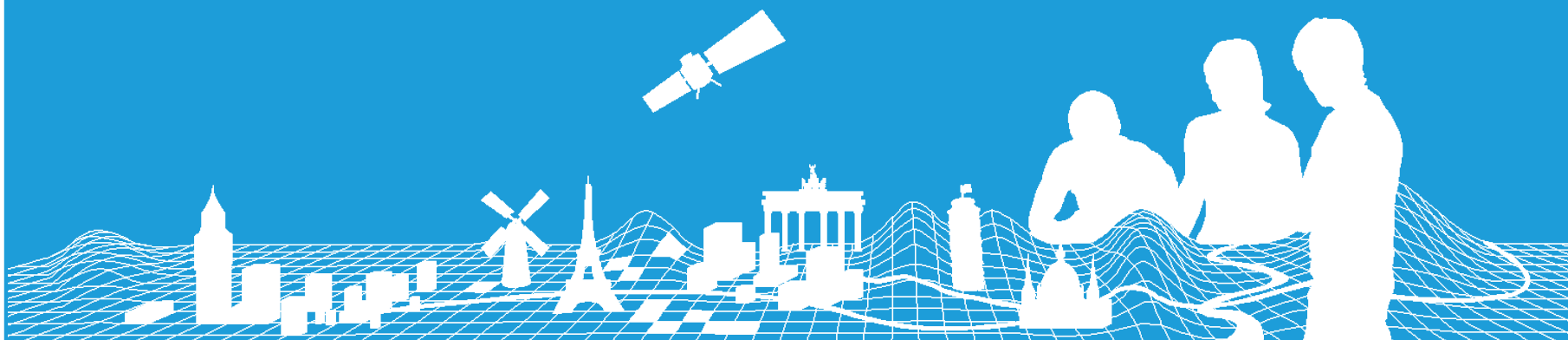
Technical Meeting of EuroGeographics Data Producers

14<sup>th</sup> of November, 2017

Clément Godin



# 1. EGM v9.0 and v10



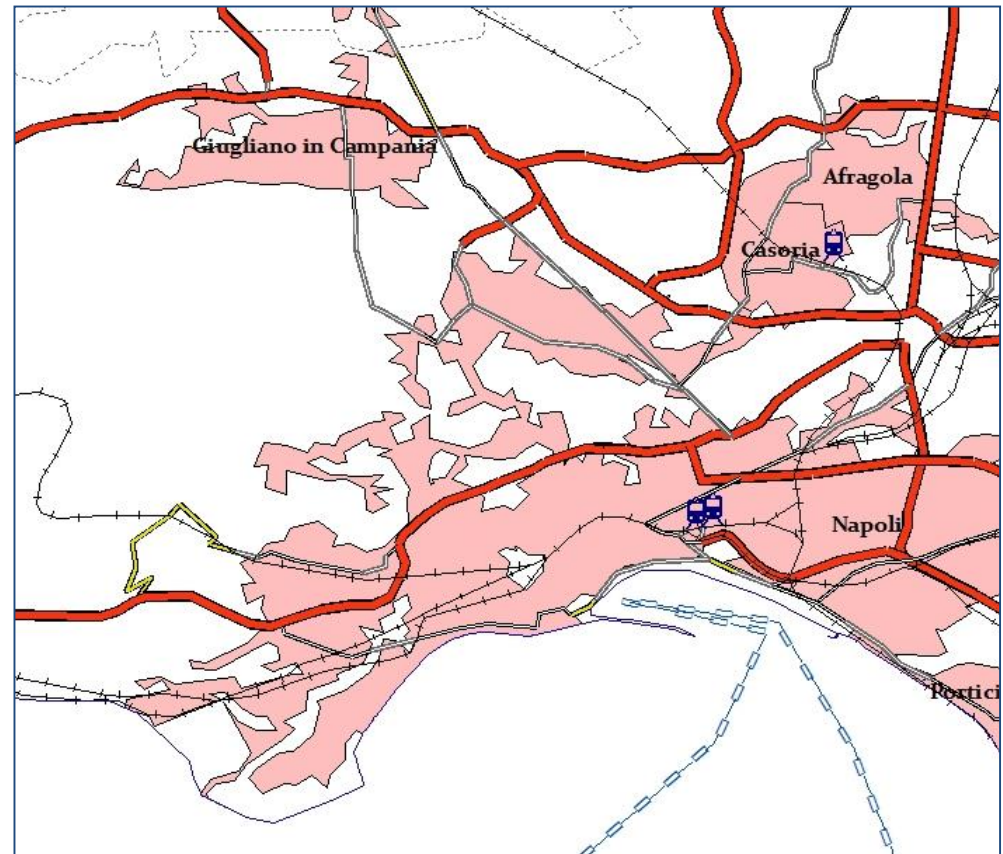
# EGM v9.0 (2016)

- **Latest version currently available**
- **Available online for free since December 2016**  
(<http://www.eurogeographics.org/products-and-services/euroglobalmap>)



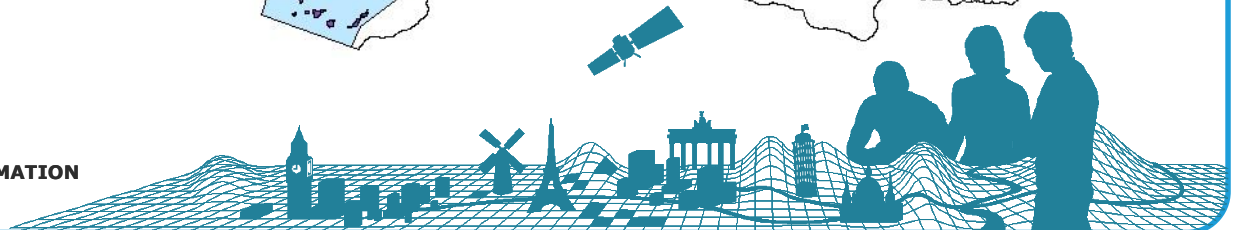
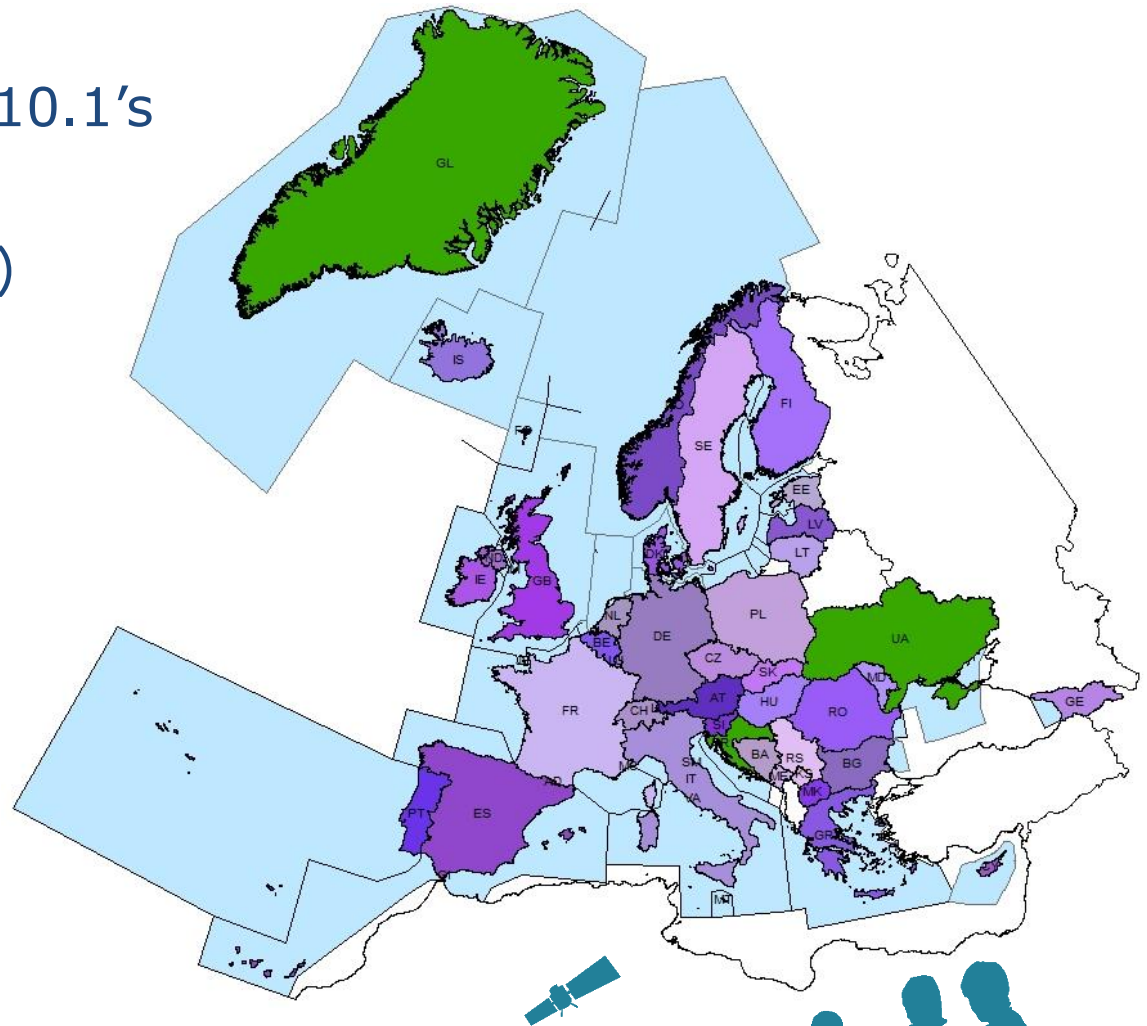
# EGM v10 (2017)

- Input data
  - EBM v11
  - ERM v10.1
- Three themes updated
  - BND
  - POP
  - TRANS
- Delivered mid-October



# EGM v10: coverage

- Adjusted on ERM v10.1's coverage
- Plus (very old data)
  - Croatia
  - Greenland
  - Ukraine





# About German railway stations in EGM

- BKG noted unsuitable railways stations in EGM
- Overview of how the railway network is selected from ERM
  1. We select the railway lines according to a SQL query
    - By looking at the old EGM data
    - Trying to harmonize the density with neighbouring countries
    - **DE:** `RRC = 16 AND EXS <> 6` (operational and under construction main lines)
  2. We pre-select the railway stations
    - Located on a selected railway line
    - According to a specific SQL query fitting with the specifications better
    - **DE:** `TFC <> 32 AND TFC <> 33 AND TUC <> 35`  
(no halts, no marshalling yards, and no cargo or freight stations)



# How the railway network is selected (cont.)

3. We select the BuiltupP with a given number of inhabitants
  - **DE:** 8,000 inhabitants
4. Among the pre-selected stations, we keep only
  - Those which are located closer than 3 km to a selected BuiltupP with the same name
  - If no station with the same name has been found before: those which are located closer than 1 km to a selected BuiltupP
  - Each BuiltupP can only be used to select one station
5. The network is “cleaned”
  - Removing dangles which do not lead to stations
  - Ensuring connectivity on international boundaries
  - etc.



# Questionable results in Germany

- Problem for Germany in step 4
  - Name of the main station and name of the city don't always match

BuiltupP.NAMN1 = 'Frankfurt am Main'  
 RailrdC.NAMN1 = 'Frankfurt (Main) Hbf'

- As a result
  - Kept stations on a suburban railway line
  - Frankfurt's main station missing

- RailrdC kept in EGM
- RailrdC not kept in EGM
- BuiltupP in EGM

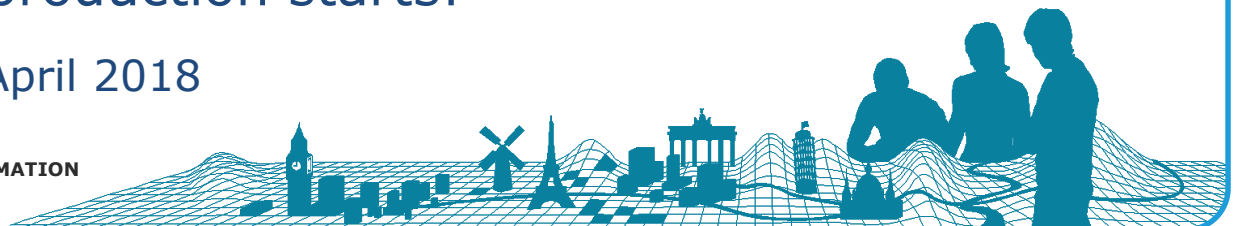
Background: German web map



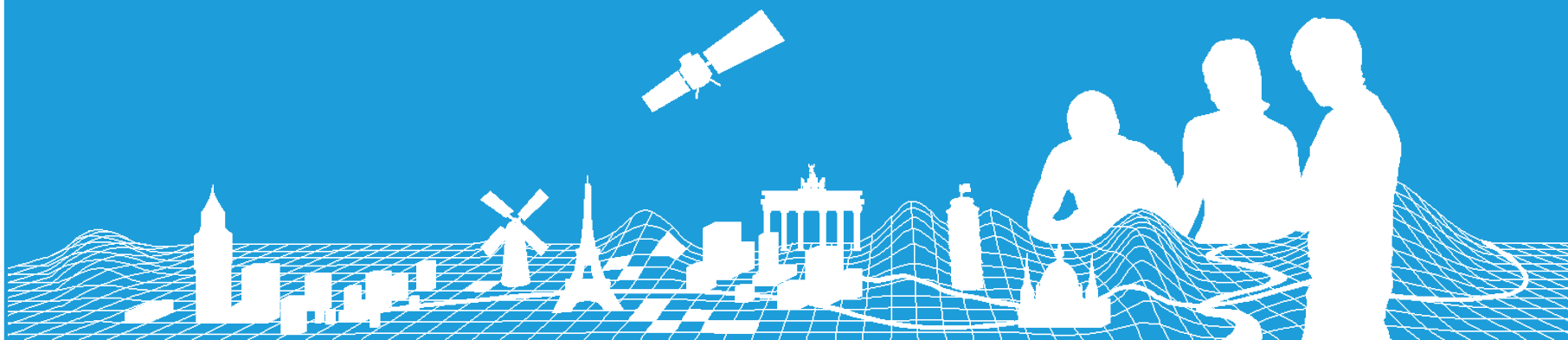


# Remedy

- Adapting to each country's specificity
  - For Germany, keeping the pre-selected stations with the abbreviation "Hbf" (for "Hauptbahnhof", main station) in their name
  - In the Austrian data, "Hauptbahnhof" is used instead of the abbreviation.
- What we suggest
  - Take a look to your national data in EGM v10
    - Especially HYDRO
  - Tell us if you notice irregularities in the selected data
  - Together we'll find a way to have a better selection and integrate the solution in the production tools
- Before the next production starts!
  - Meaning before April 2018



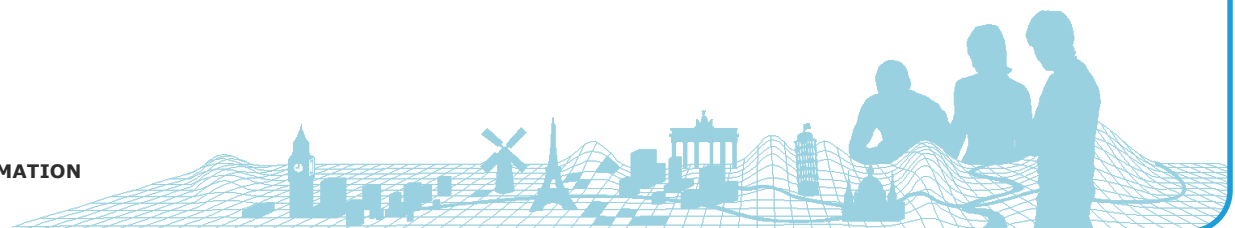
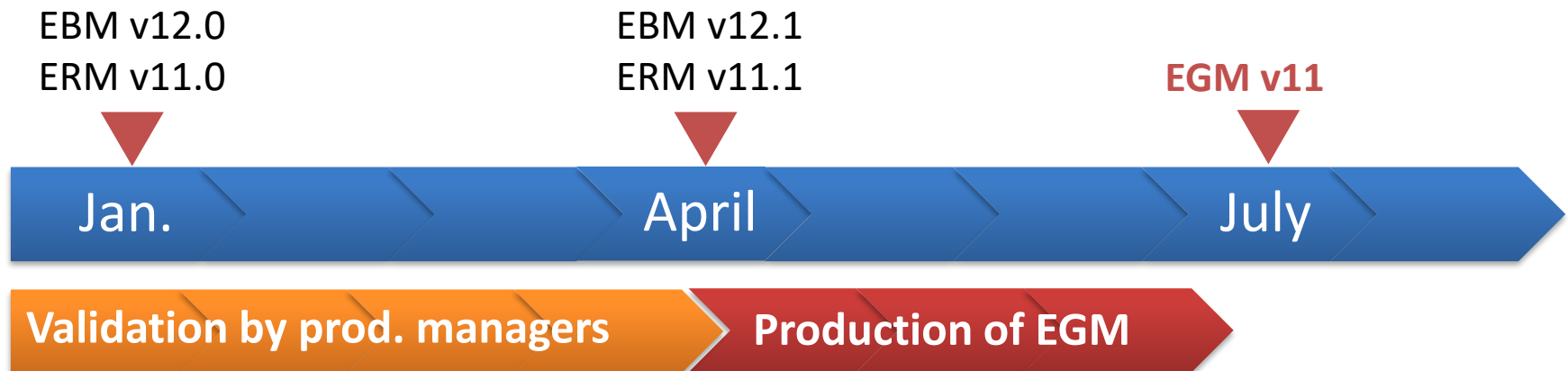
## 2. EGM v11



# EGM v11: themes and timeline (2018)

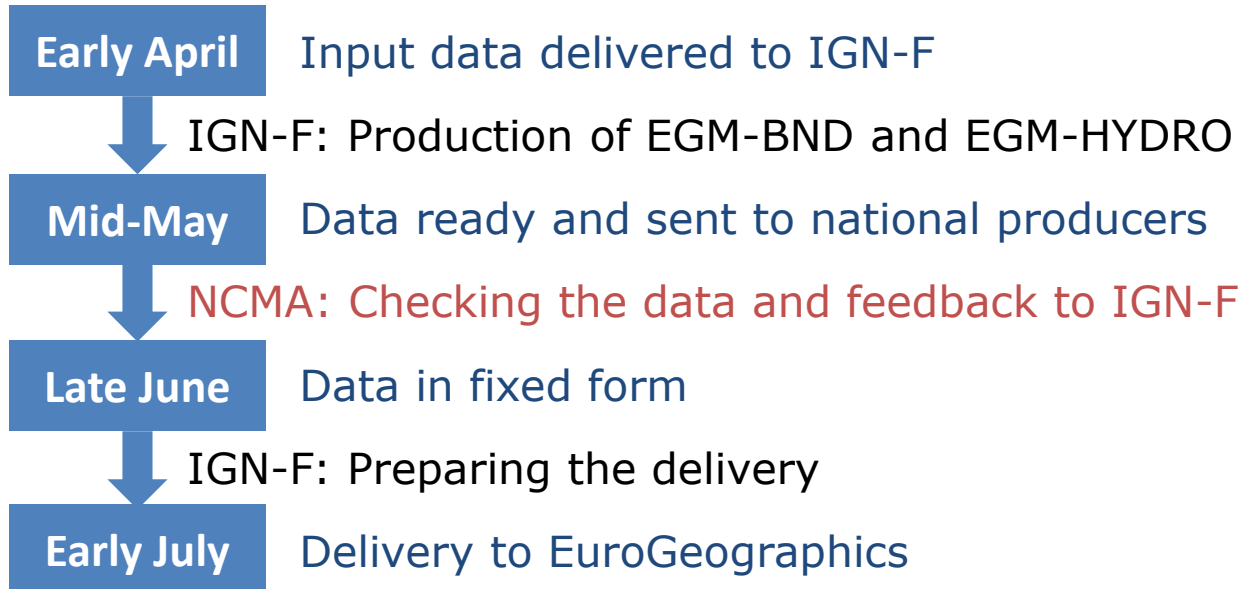
## ■ Scheduled themes

- BND
- HYDRO

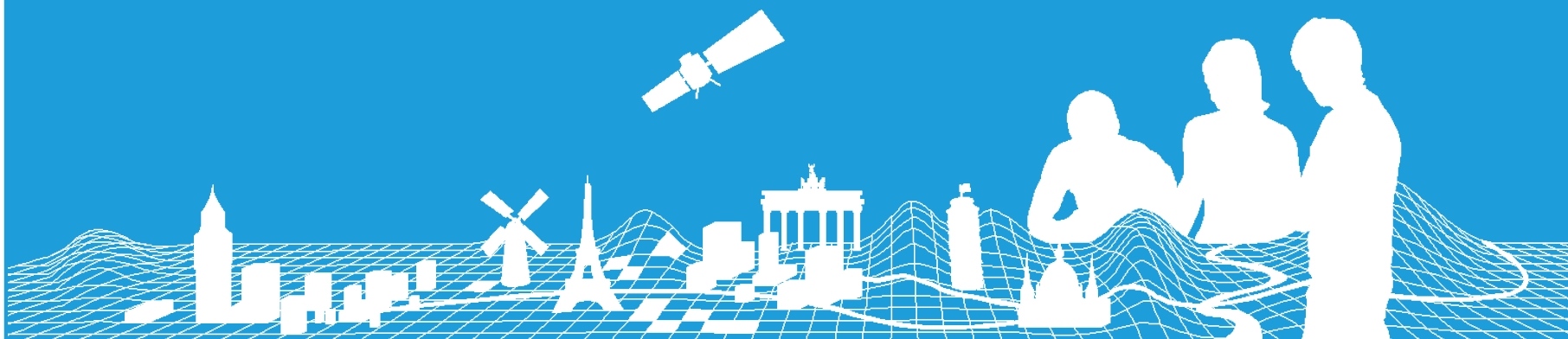


# EGM v11: aimed groundwork (2018)

- Groundwork



# 3. About the production platform



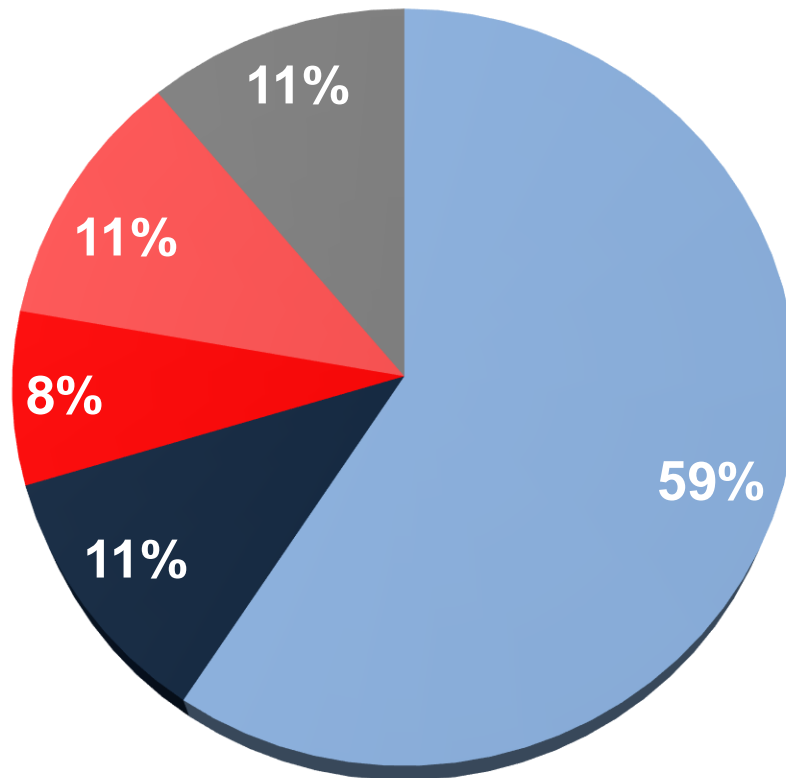


# About last year's poll

- 27 answers
- Result mostly positive
- The proposal of an online production platform turned down



# Results about EGM v8's data (2015)

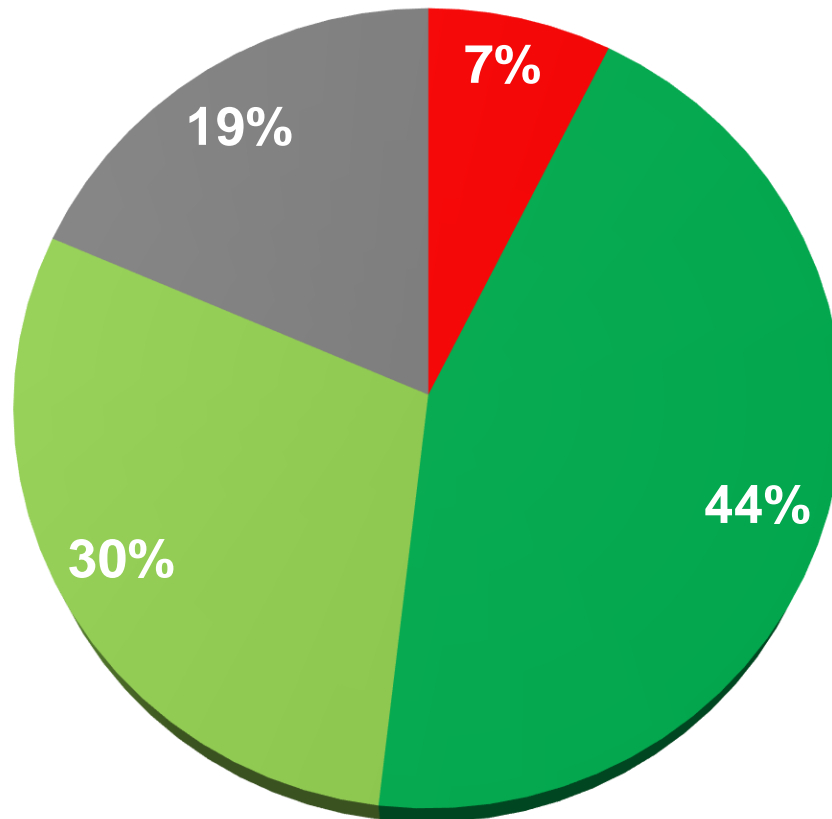


- The national producer feels comfortable with the fact that EGM is released without them validating their data
- The producer feels comfortable with the fact that they don't validate their data and checked the one in EGM v8
- The producer doesn't feel comfortable with the fact that they cannot validate their data and checked the one in EGM v8
- The producer doesn't feel comfortable with the fact that they cannot validate their data and didn't check the one in EGM v8
- No opinion

➔ **The national producers who checked the data found no mistakes**



# Results about the production platform



- The producer doesn't seem interested in the platform
- The producer seems interested in the platform and might allocate time to use it
- The producer seems interested in the platform and cannot say if they could allocate time to use it
- No opinion

➔ **Estimated time available to use the platform annually: between 1 week and 1 month**



Gracias

Bedankt

Teşekkürler

Merci

Go raibh maith agat

Köszönöm

# Thank you for your attention

Благодаря

Tack

Dziękuję

Grazie

Ačiū

Danke

Děkuji

Tak

Tānan

Hvala

IGN – Institut national de  
l'information géographique  
et forestière

73, avenue de Paris

94165 Saint-Mandé Cedex  
FRANCE

Takk

გმადლობთ

Obrigado

Grazzi

Ďakujem

Mulțumesc

Paldies

Ευχαριστώ

Thanks

Хвала

Kiitos

EuroGeographics

CONNECTING YOU TO THE  
**AUTHORITATIVE GEO-INFORMATION  
FRAMEWORK** FOR EUROPE

