

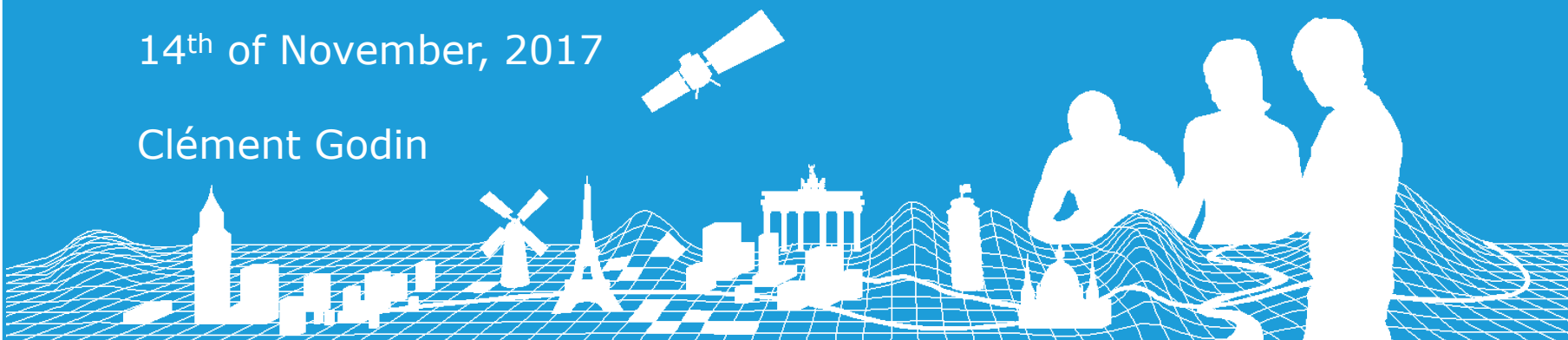
NUTS3 compatible with EGM

A technical approach

Technical Meeting of EuroGeographics Data Producers

14th of November, 2017

Clément Godin

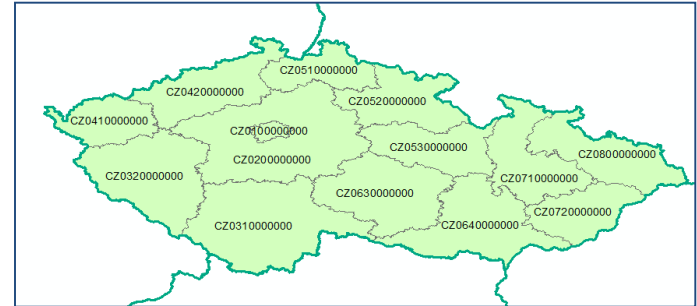


How EGM-BND is produced

Country classification (1)

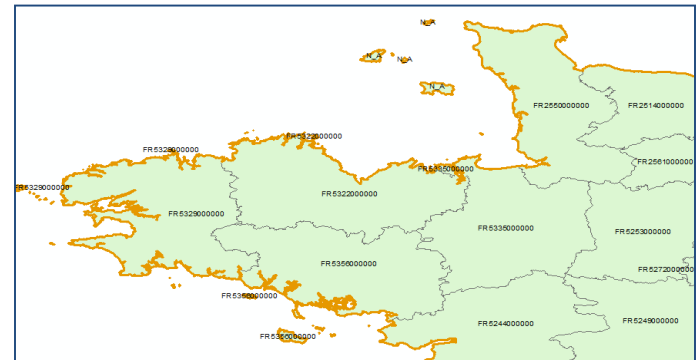
- Category 1

- Countries without coastline
- e.g.: Czech Republic



- Category 2

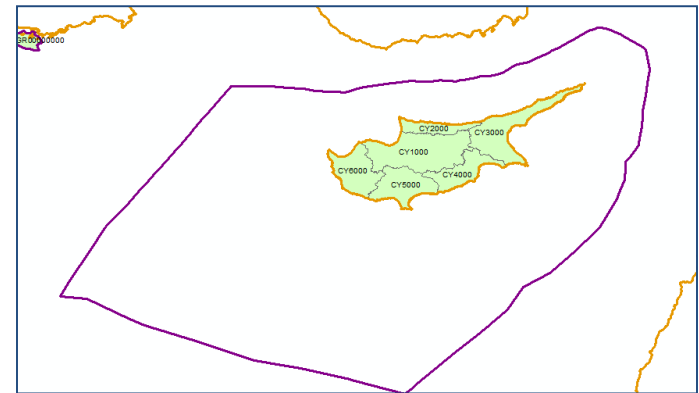
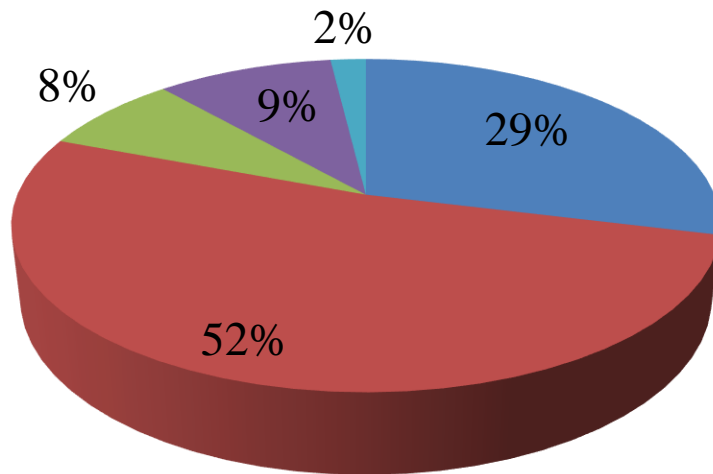
- Countries whose coastlines are used as administrative boundaries and without maritime boundary
- e.g.: France, Great Britain



How EGM-BND is produced

Country classification (3)

- Category 5
 - Countries whose coastlines aren't used as administrative boundaries, and with maritime boundaries but unused for EGM
 - e.g.: Cyprus
- For information: distribution per category



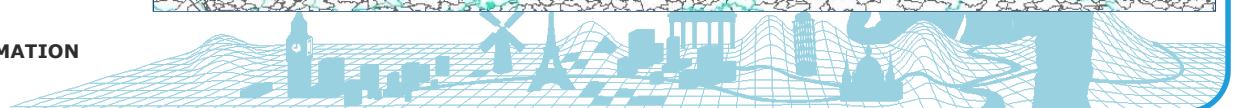
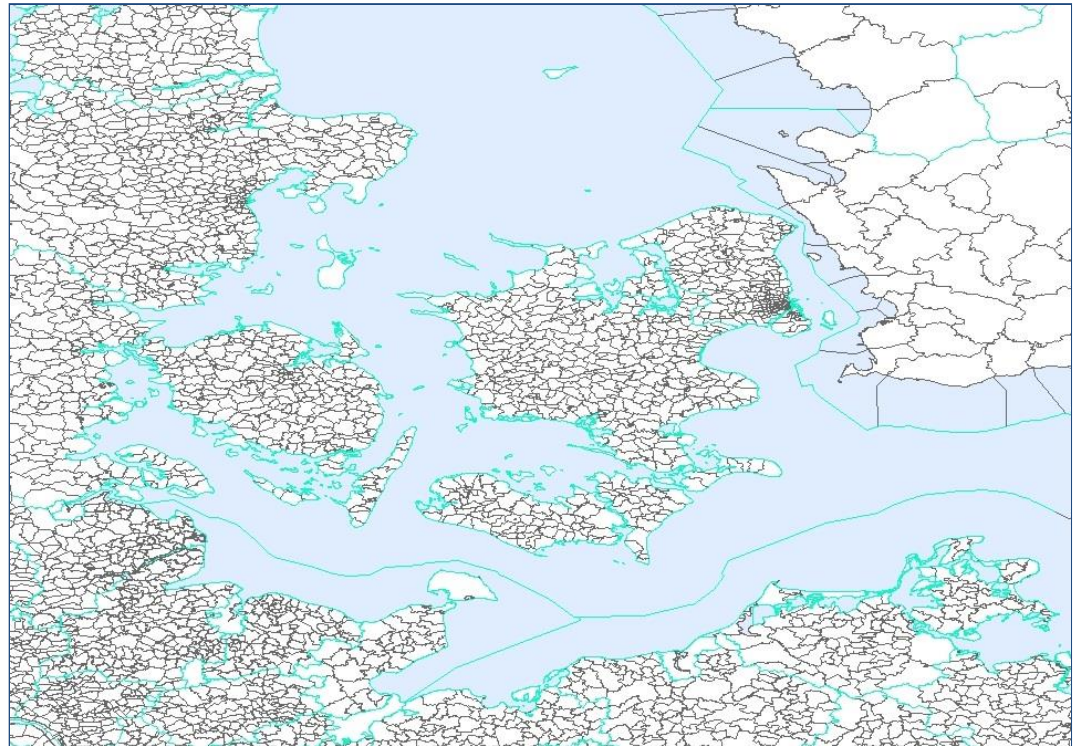
- Category 1
- Category 2
- Category 3
- Category 4
- Category 5



How EGM-BND is produced

Step 1: Selection

- From EBM linear feature classes
 - 1. International boundaries (including the maritime ones)
 - 2. Administrative boundaries to keep
 - Depend on the levels kept for each country
 - Include NUTS3 at least



How EGM-BND is produced

Step 2: Simplification

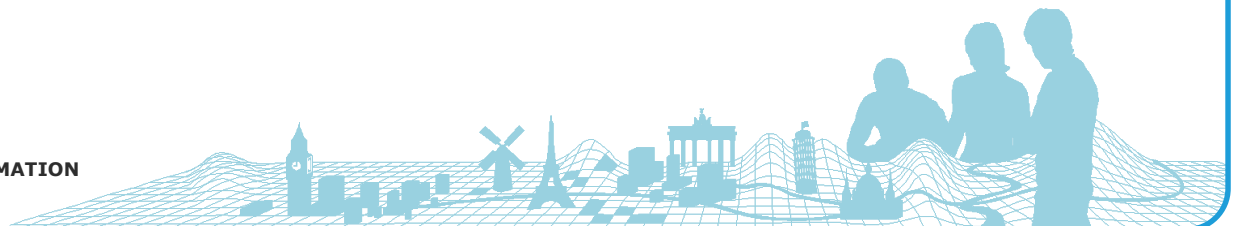
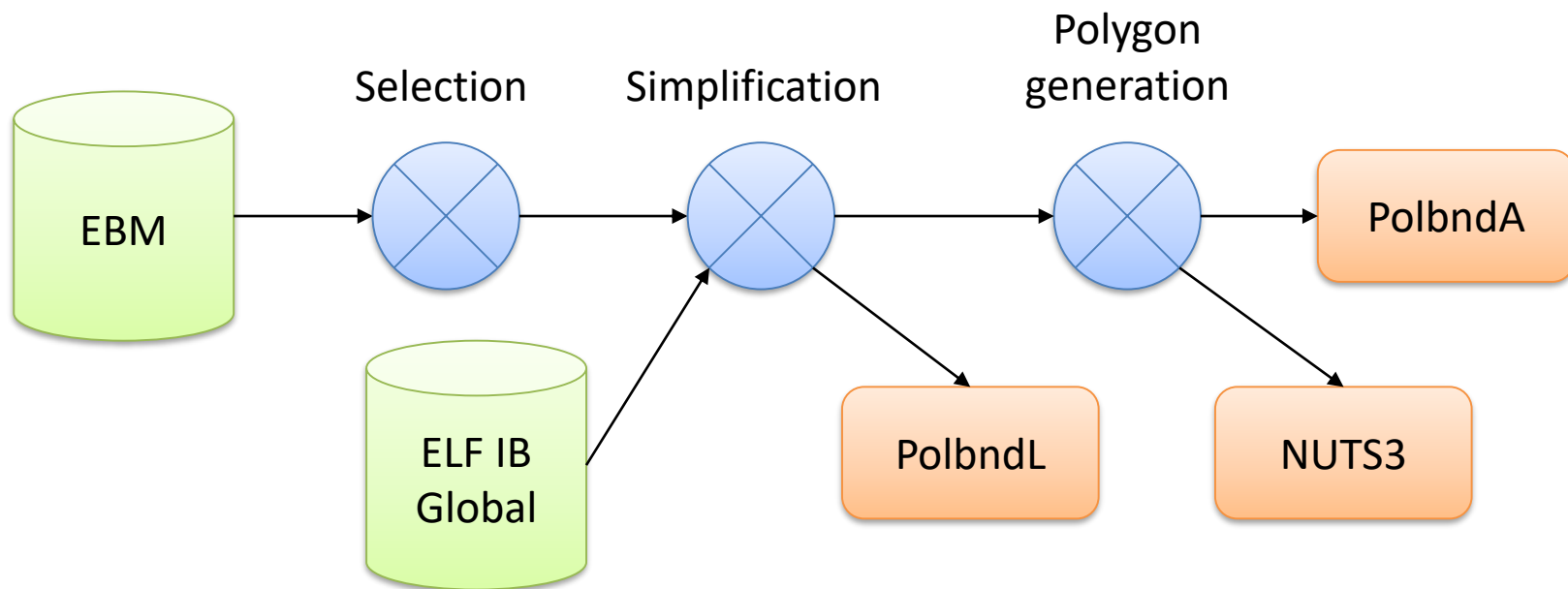
- The boundaries both maritime and on land are replaced with ELF's ones, generalized earlier
- The other boundaries are simplified using ArcGIS generalization tools
- Then, polygons are generated



Integrating the production of NUTS3 into the process

First idea

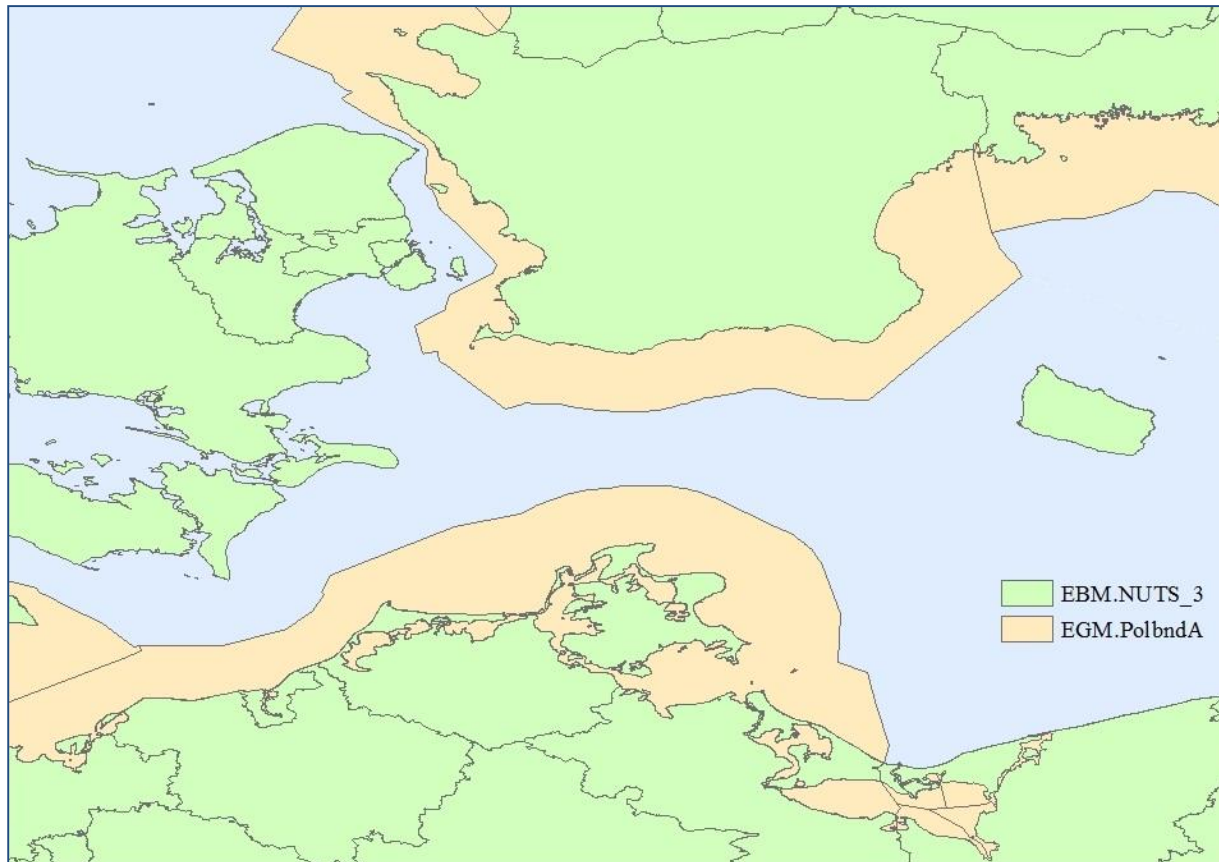
- To keep perfect consistency between Polbnd feature classes and NUTS3 feature class



Integrating the production of NUTS3 into the process

Specific case: countries of categories 3 and 4

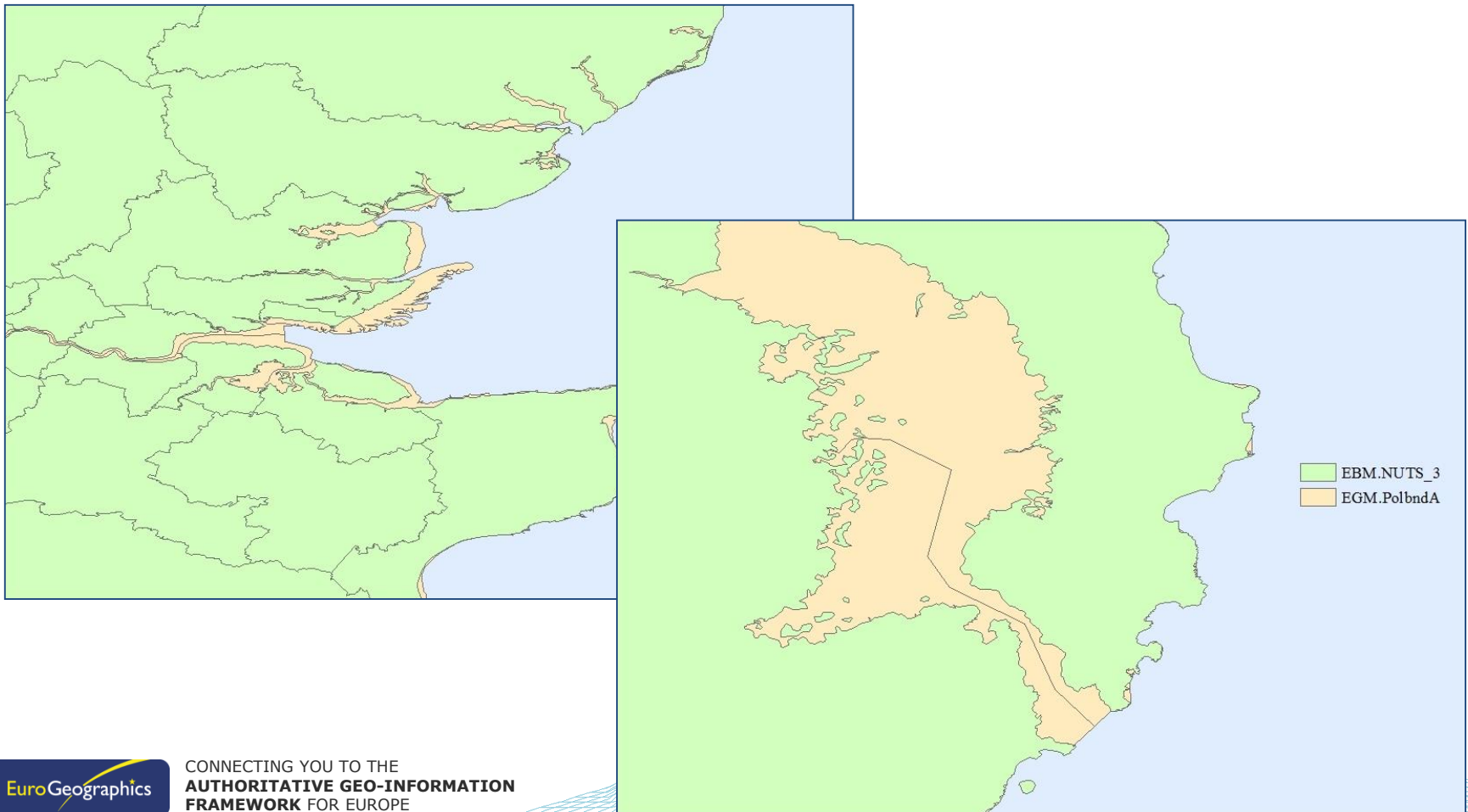
- Parts of administrative units in the sea aren't included in NUTS3 division



Integrating the production of NUTS3 into the process

Specific case: Great Britain and Northern Ireland

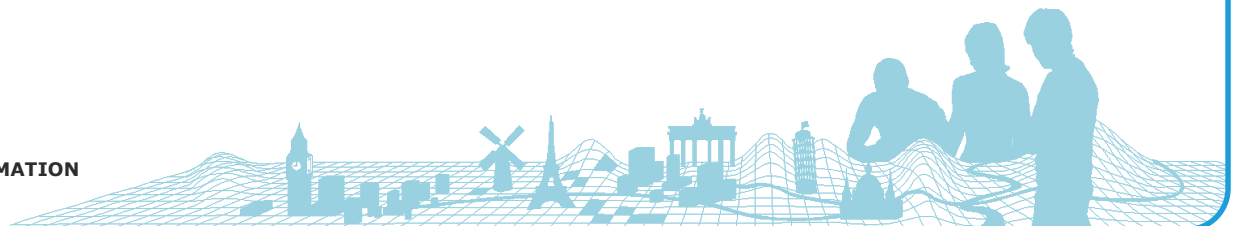
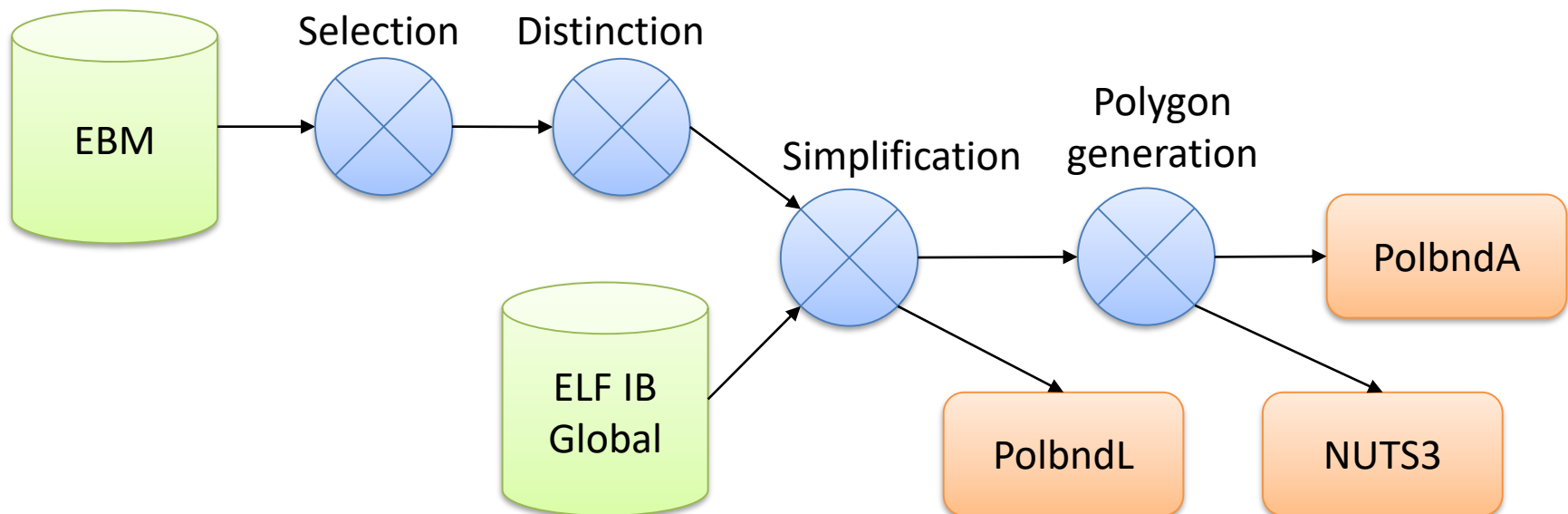
- Water parts of administrative units aren't included in NUTS3 division



Integrating the production of NUTS3 into the process

New approach

- Boundaries for Polbnd and NUTS3 are selected together
- Then they are distinguished: Polbnd only, NUTS3 only, both
- The polygons are generated according to this distinction



Gracias

Bedankt

Teşekkürler

Merci

Go raibh maith agat

Köszönöm

Thank you for your attention

Благодаря

Tack

Dziękuję

Grazie

Ačiū

Danke

Děkuji

Tak

Tānan

Hvala

Takk

გმადლობთ

Obrigado

Grazzi

Ďakujem

Mulțumesc

Paldies

Ευχαριστώ

Thanks

Хвала

Kiitos

CONNECTING YOU TO THE
**AUTHORITATIVE GEO-INFORMATION
FRAMEWORK** FOR EUROPE

EuroGeographics



IGN – Institut national de
l'information géographique
et forestière

73, avenue de Paris

94165 Saint-Mandé Cedex
FRANCE

Contact

Clément GODIN

☎ +33 1 43 98 81 81

✉ clement.godin@ign.fr

