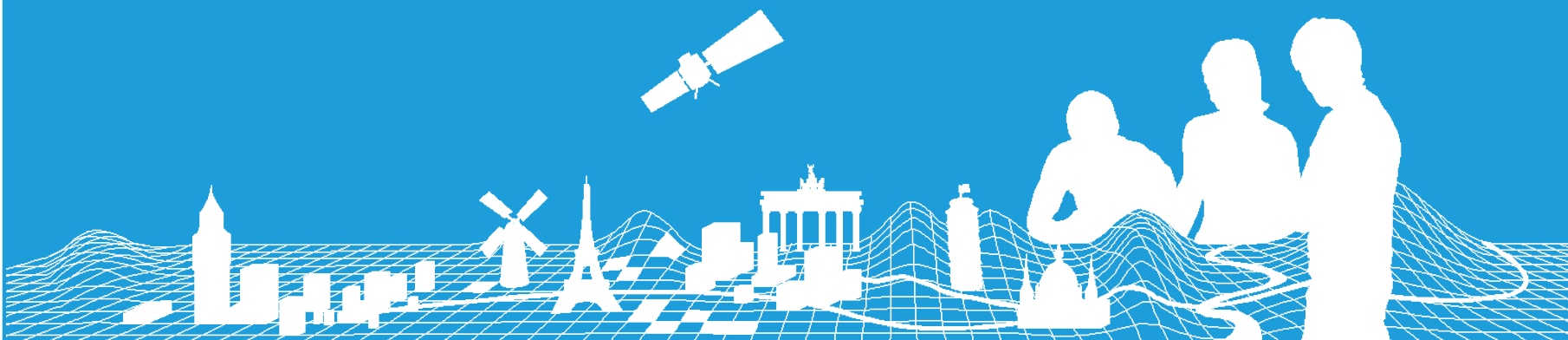


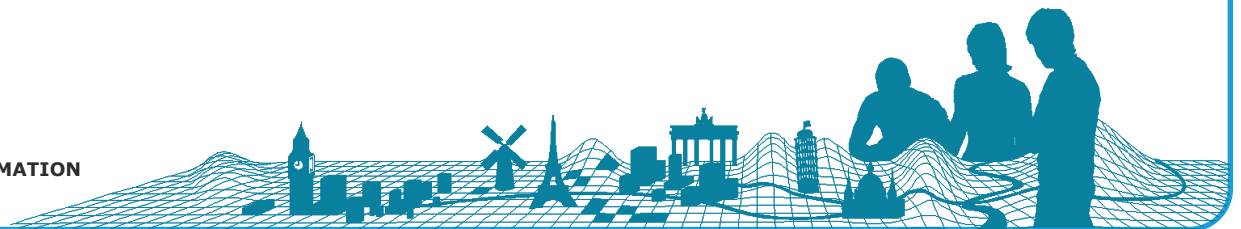
Production 2018 EBM and ERM

Jörgen Spradau and Regine Elling, BKG
Webinar Technical Meeting of the EG Data Producers
28th February 2018



Content

- Review production year 2017
- Production year 2018
- ELF International Boundaries
- Data exchange



Review production year 2017

- Rearrangement of ERM groups
→ New Regional Coordinator (new group E)



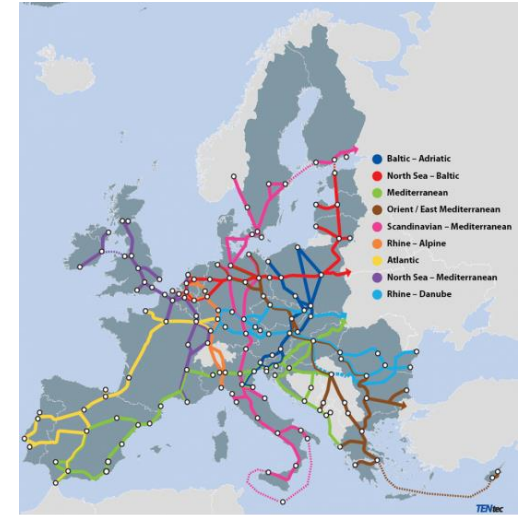
ERM Production 2018

- Group A: Ben Bruns (Kadaster NL)
→ ben.bruns@kadaster.nl
- Group B: Clément Godin (IGN France)
→ clement.godin@ign.fr
- Group C: Dovilė Rusonytė (AGI)
→ d.rusonyte@agi.lt
- Group D: Andreas Pammer (BEV)
→ andreas.pammer@bev.gv.at
- Group E: Constantin Nagorneac (INGEOCAD)
→ cnagorneac@gmail.com



Review production year 2017

- Updated ERM themes
→ BND, HYDRO, MISC and NAME
- Delivery to Eurostat by 20th January 2018
→ EBM v12 (NUTS 2016) and ERM v11
- DG MOVE
→ Update TEN attributes for
TRANS and HYDRO (ERM v11.1)
- Remaining tasks
 - Provide EBM v12.1 (NUTS 2013) and ERM v11.1 to data producers and public
 - Provide hints on critical location where data producer should revise the edge matching for the roads of the transportation theme



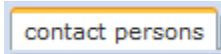

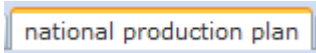
Note: the nine TEN-T core network corridors are based on the CEF and TEN-T Regulations (1316/013 & 1315/013). They have been created as a coordination instrument to facilitate the completion of major parts of the core network of strategic importance.
Source: European Commission, Directorate-General for Mobility and Transport, TEN-T Information System



Production year 2018

- Production Plan will be sent to data producers
 - Combined work plan for EBM, ERM and EGM
 - Describes all deliverables for data producers

EBM, ERM and EGM Production Management System

- PMS
 - Update contacts 
 - Provide information of your production environment 
 - Fill in National Production Plan 2018 



Production year 2018

- Contact information in PMS

NMCA	Name english	EBM	ERM	EGM
<input type="checkbox"/>	<input type="checkbox"/>	<input type="checkbox"/>	<input type="checkbox"/>	<input type="checkbox"/>

BKG Federal Agency for Cartography and Geodesy ☒ ☒ ☒

NMCA EBM - Documentation ERM - Delivery Status

mail all contacts of NMCA

NMCA: EBM: ☒ ERM: ☒ EGM: ☒ mail NMCA: ☐

ERM Region:

Name original:

Name english:

Web:

Comment:

address 1:

address 2:

address 3:

postalcode:

city:

comment:

metadata address: ☒

Title:

Firstname: Lastname:

Department:

Jobtitle:

calling code: location:

phone: mobile:

fax:

mail_1: mail_2:

EBM role:

ERM role:

EGM role:

ERM Region Coordinator:

Contact information of

- NMCA
- Responsible persons

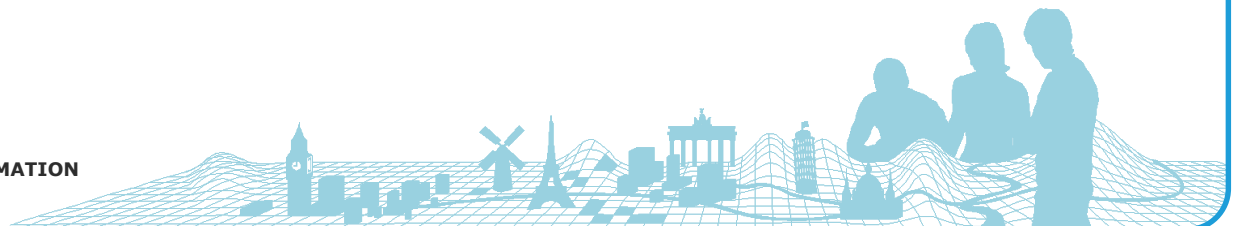
Not working for EG products any more?
Please set "contact until" year.

Production year 2018

- Production information in PMS

The screenshot shows a web interface with five tabs: 'contact persons', 'production infos' (selected), 'national production plan', 'languages and geogr. extent', and 'metadata'. The 'production infos' tab contains the following fields:

GIS:	<input type="text" value="ArcGIS 10.2.1"/>	Exchange Format:	<input type="text" value="fgDB"/>
limit mail attachment:	<input type="text" value="5 MB"/>		
BKG ftp exchange:	<input checked="" type="checkbox"/>	Own ftp exchange:	<input type="checkbox"/>
ESRI Data Reviewer:	<input checked="" type="checkbox"/>	ESRI Production Mapping:	<input checked="" type="checkbox"/>
FME:	<input checked="" type="checkbox"/>	Ctools:	<input checked="" type="checkbox"/>
other_tools:	<input type="text"/>		
comment:	<input type="text"/>		



Production year 2018

- National Production Plan in PMS

The screenshot displays the PMS (Production Management System) interface for the National Production Plan in 2018. The interface is divided into two main sections: EuroBoundaryMap and EuroRegionalMap.

EuroBoundaryMap Section:

- Reference date of EBM v13 is 1.1.2018. Can you provide your update according to this reference date?
- Update can be delivered to
- Which type of EBM update will be provided?
- Additional comments:
- The national update has to be provided by 15.6.2018. Can you meet this deadline?

EuroRegionalMap Section:

- ERM-BND will be derived automatically from EBM. Are there any national issues or constraints concerning this?
- Data producers are asked for a real update of theme TRANS. Can you provide a full update?
- The national update of theme TRANS has to be provided by 15.6.2018. Can you meet this deadline?
- Data producers are asked for a real update of theme POP. Can you provide a full update?
- The national update of theme POP has to be provided by 15.6.2018. Can you meet this deadline?

The interface includes a top navigation bar with tabs: contact persons, production infos, national production plan (selected), languages and geogr. extent, and metadata. A dropdown menu for the year 2018 is visible. A red box highlights the 'add production plan' button in the top left and the 'download productionplan' button in the bottom right. A red arrow points from the 'download productionplan' button to a red 'PDF' label.

Eurostat Contract

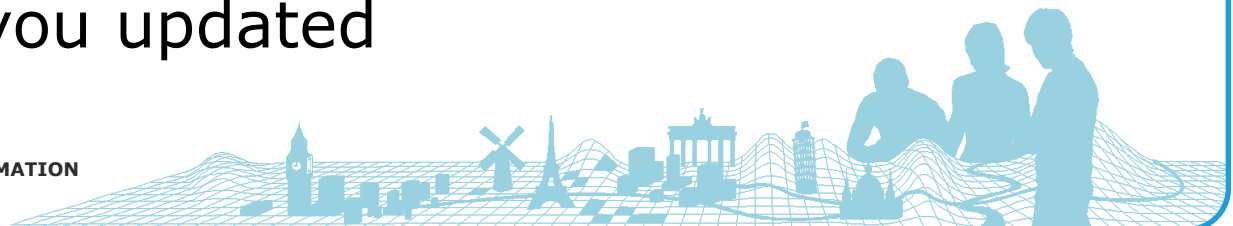
Production year		2015	2016	2017	2018
Delivery to Eurostat		Jan 2016	Jan 2017	Jan 2018	Jan 2019
EBM Version		10.0/10.1	11.0/11.1	12.0/12.1	13/13.1
ERM Version		9.0/9.1	10.0/10.1	11.0/11.1	12.0/12.1
ERM themes	BND	BND	BND	BND	BND
	HYDRO	HYDRO		HYDRO	
	TRANS		TRANS		TRANS
	POP		POP		POP
	MISC			MISC	
	NAME			NAME	
	VEG				VEG



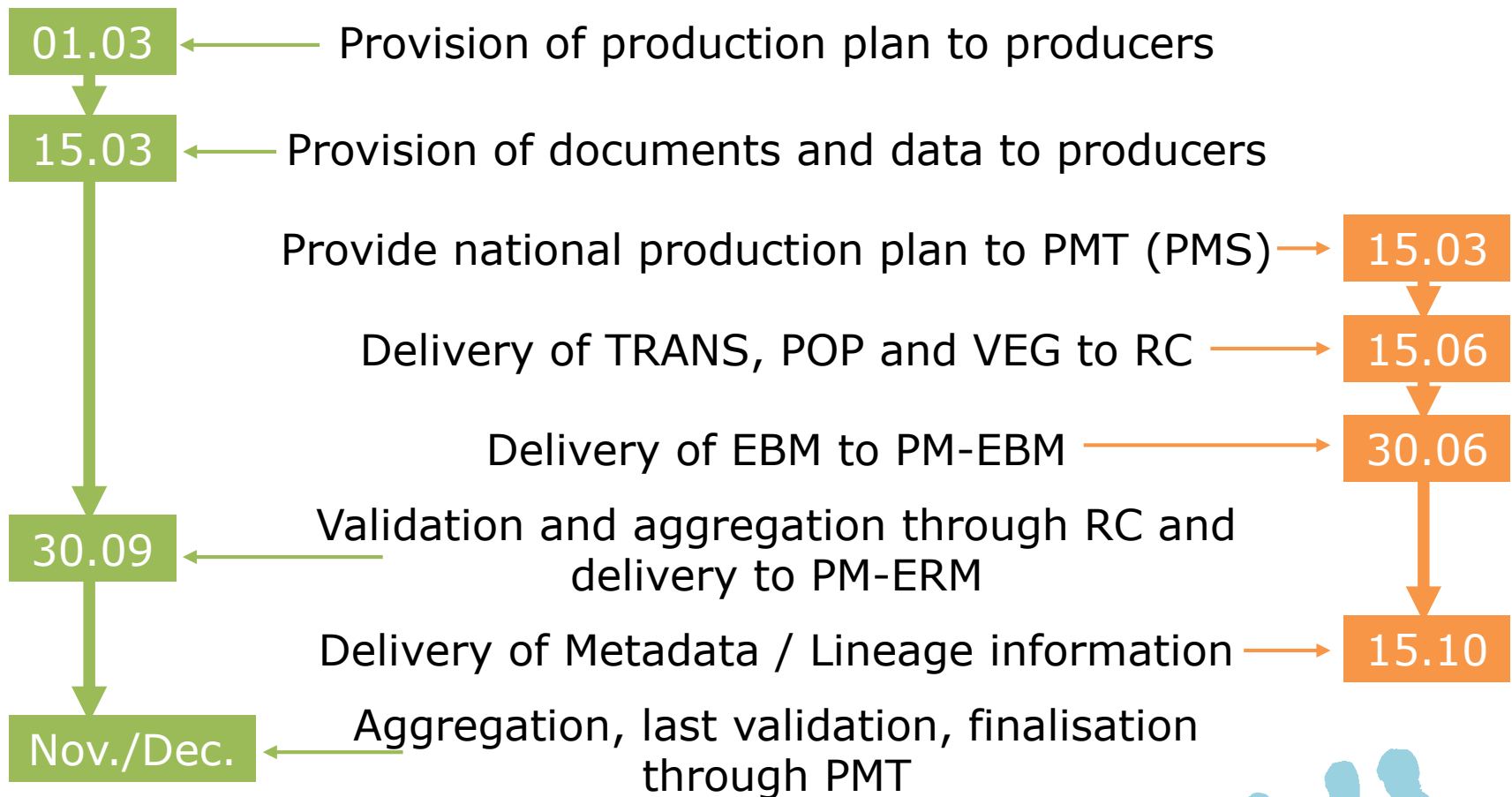
Eurostat Contract



- We are in the final year of a four year contract
- We have started to speak to Eurostat about a new contract
- They have confirmed this will be another negotiated procedure
 - Means there is no tender situation, the discussion is only with EuroGeographics and it's members
- They are finalising the specifications internally by March
- We expect additional requests but have been very open with them on our product development plans which also include ELS / Open ELS
- We will keep you updated

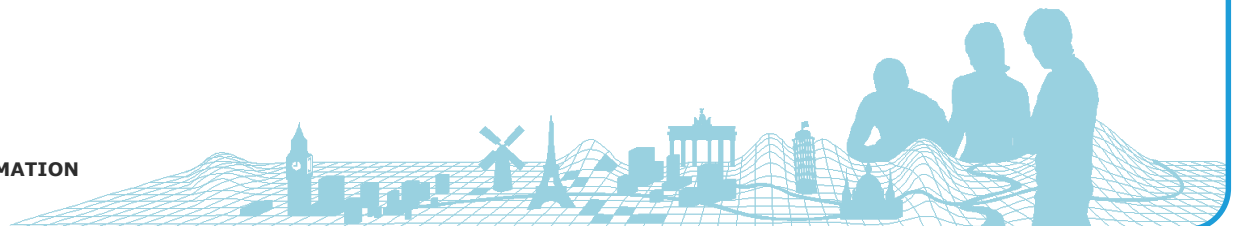
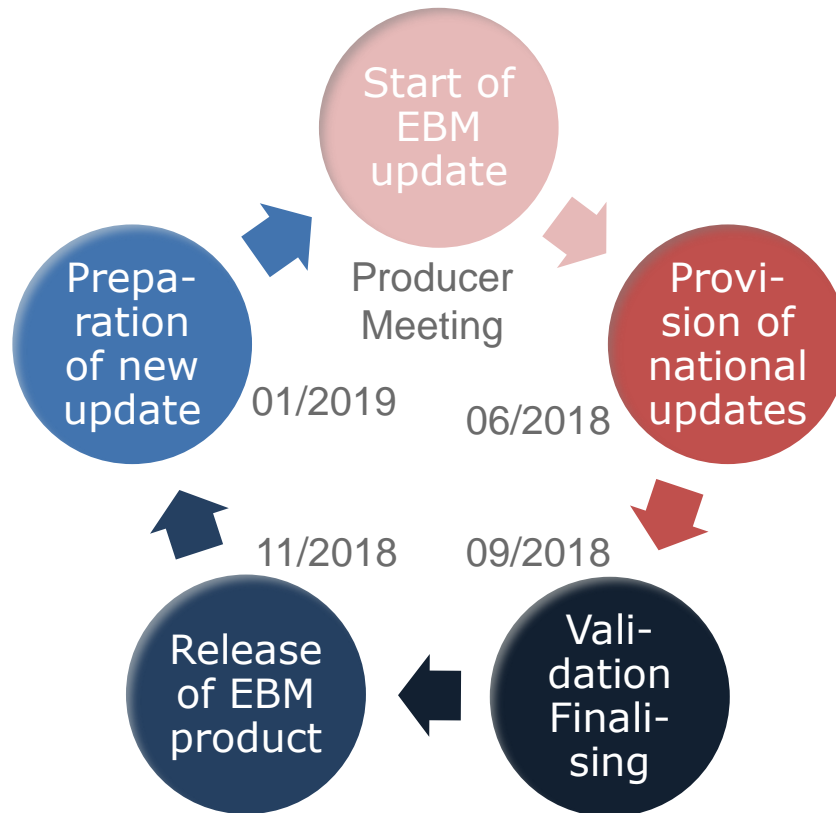


Timetable for Production of EBM and ERM 2018



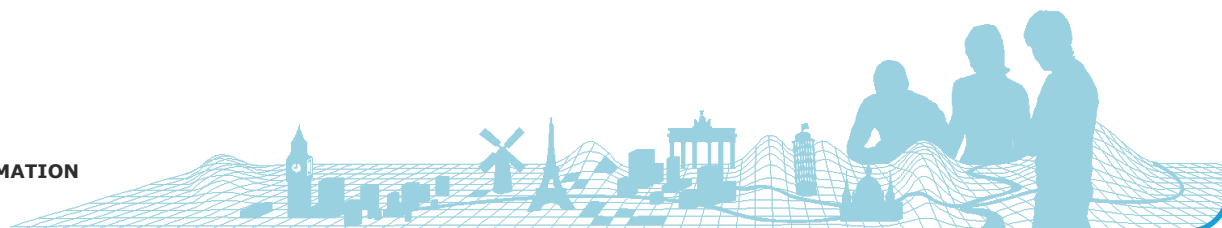
EBM Production 2018

- Reference date: **1.1.2018**



EBM Production 2018

- The production of the next update will be carried out in the usual workflow
- EBM v12 (NUTS 2016) is basis for upcoming provision (see FTP server)
- The reference date of EBM v13 is 1.1.2018
- EBM data model changed, only one LAU level will be maintained
- NMCAs have to update the following content of the EBM database:
 - Feature class **EBM_A** – basic EBM geometry
 - Table **EBM_NAM** – basic EBM attribution
 - Feature class **ResidenceOfAuthority**
 - Table **EBM_NUTS**
 - Table **EBM_ISN**
- NMCAs shall deliver only those feature classes or tables, where changes occur



LAU/NUTS matching

- Correct matching with statistical codes is a main feature of EBM
- Keep in close contact with your National Statistical Institute (NSI) to ensure that NSI and NMCA report the same administrative units for the specific reference date
 - EBM will only match with statistical data if both refer to same reference date
- Changes:
 - NUTS 2016 regulation ([link1](#), [link2](#))
 - Only one LAU Level exists from now on

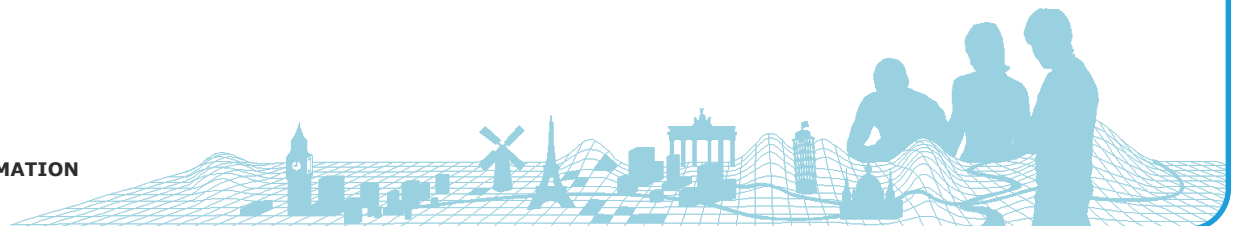


LAU/NUTS matching

- New LAU levels

	LAU level
AT	2
BE	2
BG	1
CY	2
CZ	2
DE	2
DK	1
EE	2
EL	1
ES	2
FI	2
FR	2
HR	2
HU	2

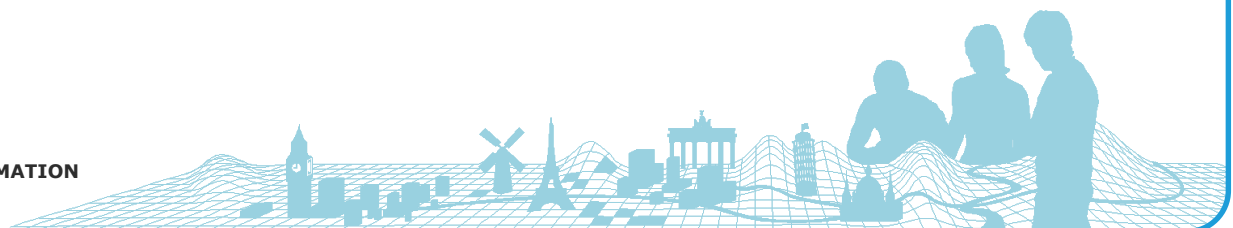
	LAU level
IE	2
IT	2
LT	1
LU	2
LV	2
MT	2
NL	2
PL	2
PT	2
RO	2
SE	2
SI	2
SK	2
UK	1



LAU/NUTS matching

- NUTS 2016 Changes within countries

Registered NUTS Changes	
DE	Germany
FI	Finland
FR	France
HU	Hungary
IE	Ireland
LT	Lithuania
NL	The Netherlands
PL	Poland
UK	Scotland and Northern Ireland



ERM Production 2018

- ERM-BND
 - Mainly derived from EBM
- Real update
 - Transportation: Maintain TEN attributes
 - Settlements: Consider correlation with EBM

EBM: Residence of Authority	↔	ERM: BuiltupP
ROA	↔	PopulatedPlaceID
USE = [1...6]	↔	USE = [23...112]

- Vegetation and Soils
- Features located on international boundary are stored in the ELF_IB_Regional database
→ Edge Matching Rules



ERM Production 2018

- Technical Documents
 - Stored in PMS

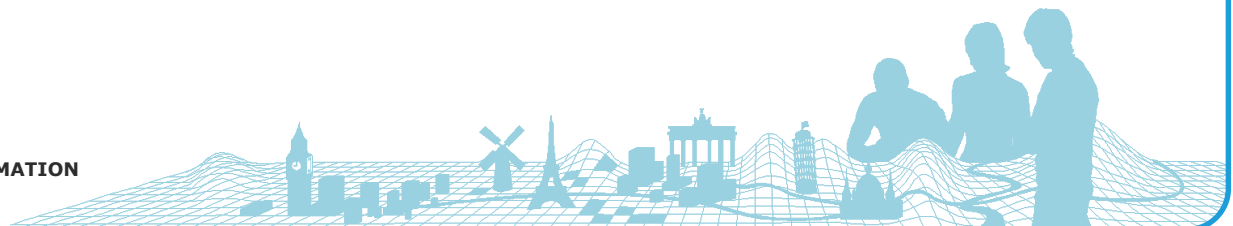
EBM, ERM and EGM Production Management System

home poll **documents** meetings actionlist PMT overview settings contact

Hello, BKG Logout

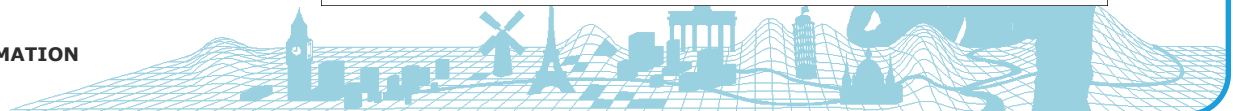
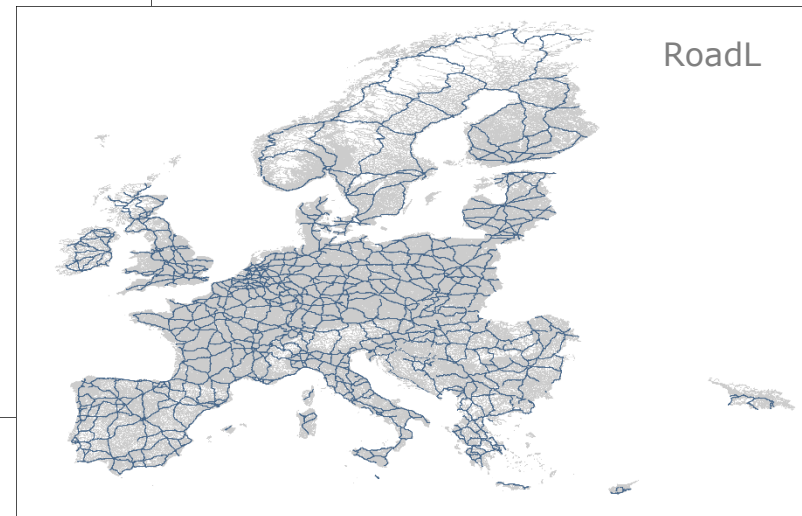
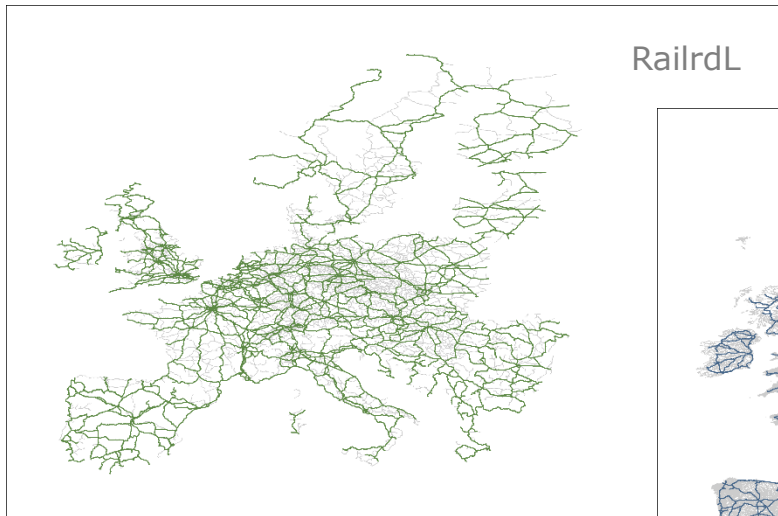
EG Product Documents. download all important documents

- Changes in data specification and data model for ERM v12 (TEN, TENTEC-ID)
- Revised Technical Guide
 - Please inform Regine Elling / PMT about mistakes / unclear explanations



ERM Production 2018

- Maintain TEN network
 - Feature Classes: AirfldC, AirfldP, HarborC, HarborP, RailrdL, RoadL
 - Attributes: TEN, TENTEC-ID



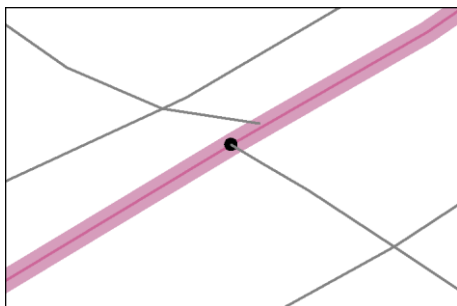
ERM Production 2018

- Revise edge matching
 - TRANS: Hints through PMT for RoadL, control other feature classes
 - VEG: Complete new
- Process of edge matching:
 - Refer to Edge Matching Rules document
 - Use the Connecting Feature Points (CFP) for all edge matching discussions with your neighbouring countries
 - Agree on one solution → incorporate to your data
 - Report back all changes of CFPs

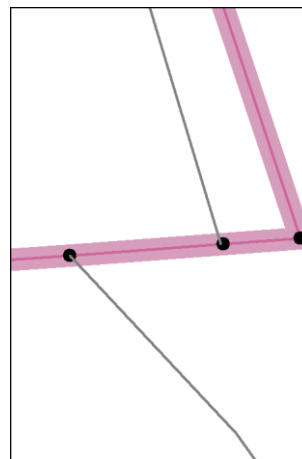


ERM Production 2018

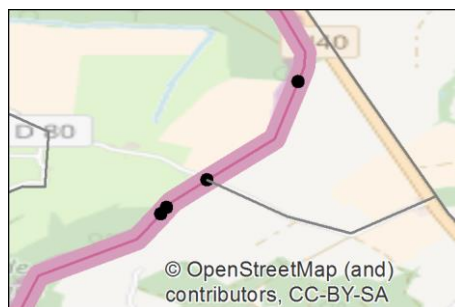
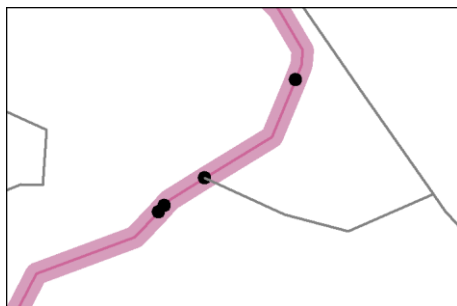
- Examples for necessary edge matching



Use CFP
to connect
features



Check
CFP for
correct
edge
matching



Line feature missing
to close network



Production year 2018

- Lineage files for EBM and ERM
 - Plan to harmonise lineage information for EBM and ERM → PMS
 - Still under discussion ...

Description of process applied
to derive the contribution

National
administrative
hierarchy

Missing attribute values

Update remarks

Deviation from the
specification

National specificities

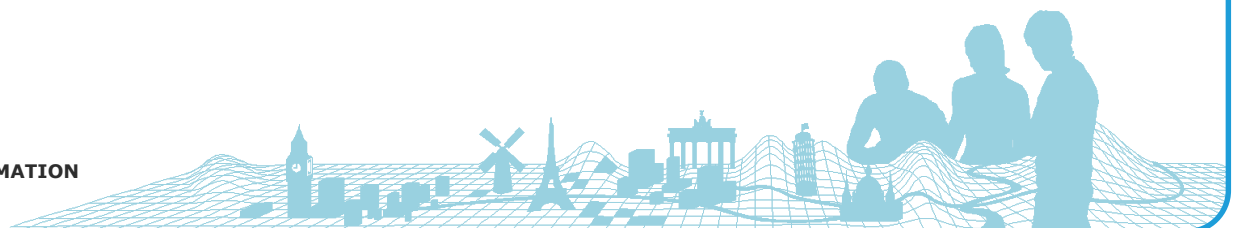
Role of cadastre



ELF International Boundaries

- NMCAAs are not allowed to make any changes on these boundaries on their own
- In case of issues → contact ebm@bkg.bund.de
- Open: integration of country dataset from Bosnia and Herzegovina
- Please keep in mind:

We don't aim to find the legally defined international boundaries. We do need pragmatic solution how to represent the boundaries in medium scale for the products EBM and ERM.



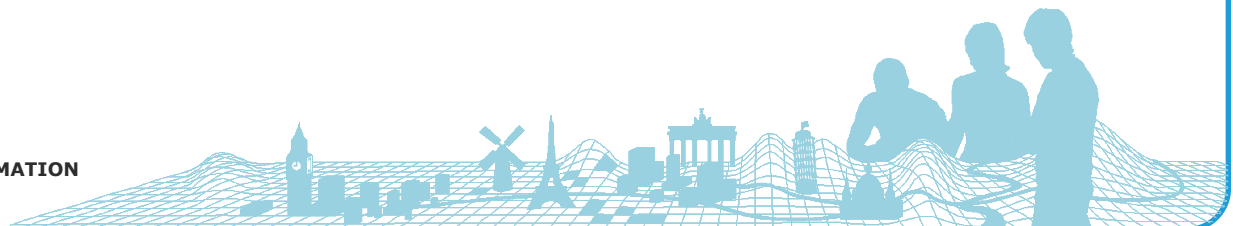
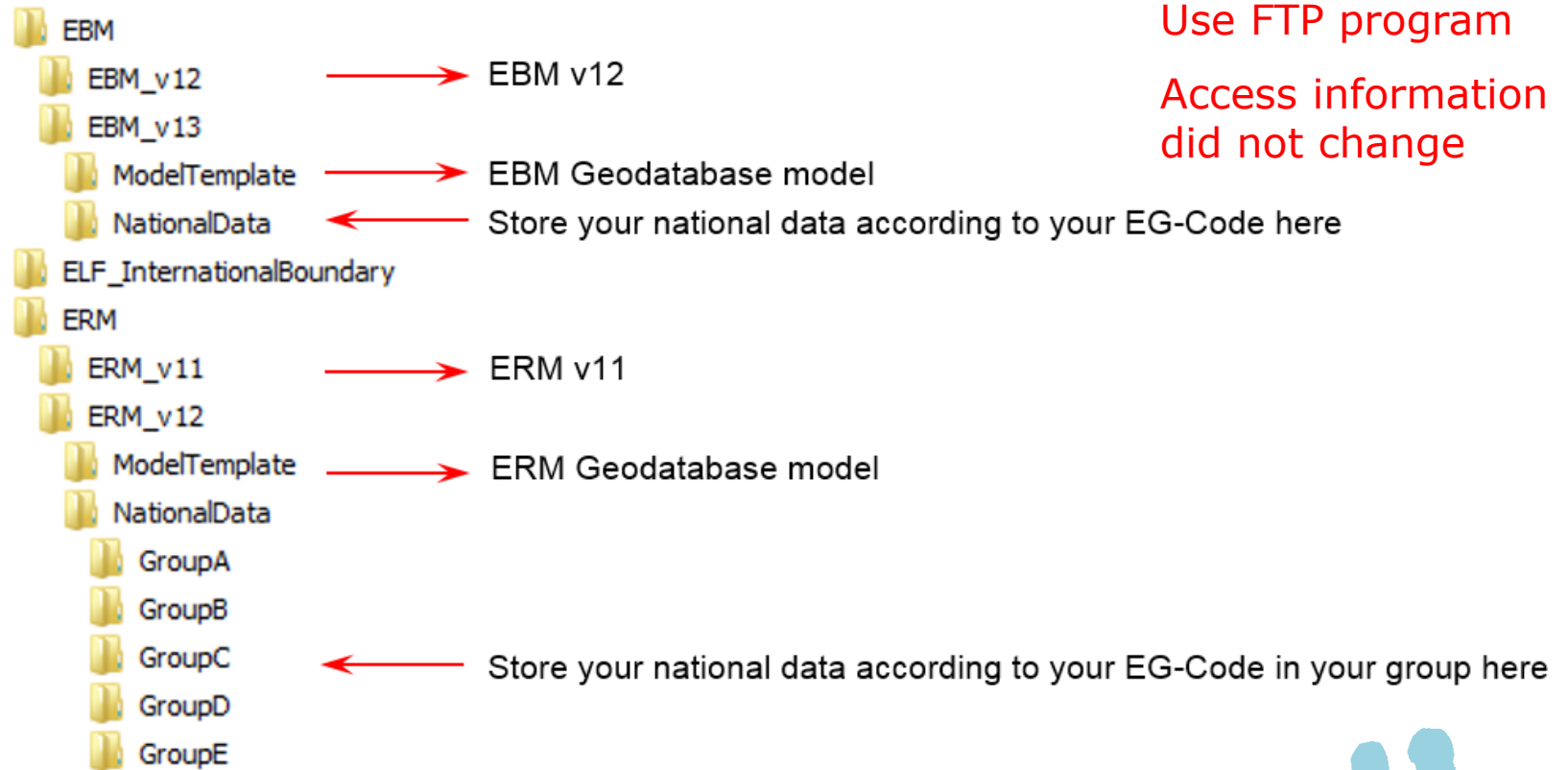
ELF International Boundaries

- ELF_IB_Regional_v6.gdb (on FTP server):
 - InternationalBoundary:
 - Has to be used for EBM/ERM
 - MaritimeBoundary:
 - 'territorial sea' or 'exclusive economic zone' (used for ERM SeaA)
 - Coastline_SeaLimit_EBM / Coastline_SeaLimit_ERM:
 - Both versions are mostly very similar
 - ConnectingFeaturePoint:
 - Store points on the international boundaries, where the edge matching of topographic data has been already agreed for ERM
 - Match your ERM updates to these points (or use them to discuss edge matching with neighbouring countries)
 - FeaturesOnBorder:
 - Point and line features located on the international boundary
 - If there are no changes data producers shall not deliver those features again! If changes occur please perform edge matching.



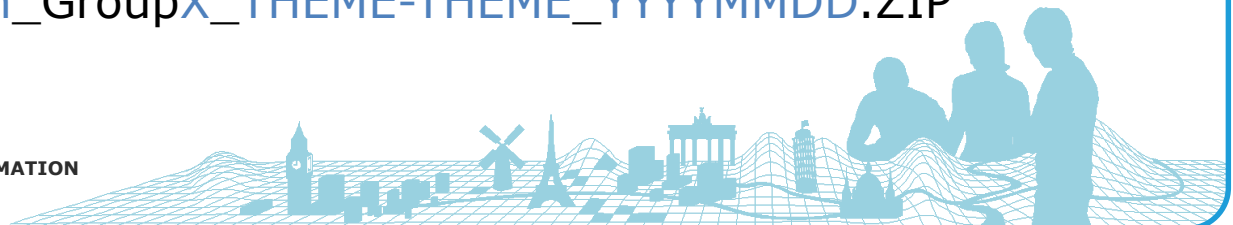
Data exchange

- BKG-FTP server: <ftp://ftp.bkg.bund.de>



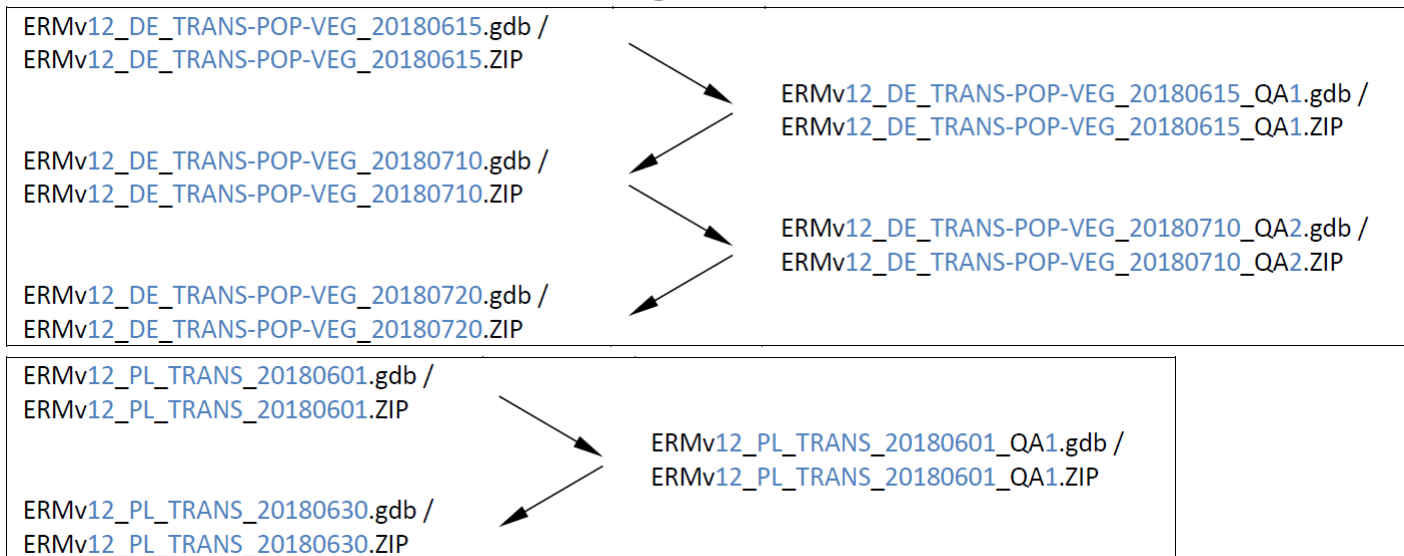
Data exchange

- Naming conventions
 - From Data Producers (NMCAs) to Regional Coordinator:
 - ERMvVersion_ICC_THEME-THEME_YYYYMMDD.gdb /
 - ERMvVersion_ICC_THEME-THEME_YYYYMMDD.ZIP
 - From Regional Coordinator to Data Producers (NMCAs):
 - ERMvVersion_ICC_THEME-THEME_YYYYMMDD_QANumber.gdb /
 - ERMvVersion_ICC_THEME-THEME_YYYYMMDD_QANumber.ZIP
 - From Regional Coordinator to Production Management Team:
 - ERMvVersion_GroupX_THEME-THEME_YYYYMMDD.gdb /
 - ERMvVersion_GroupX_THEME-THEME_YYYYMMDD.ZIP



Data exchange

- Naming conventions – examples
 - Data Producer ↔ Regional Coordinator



- Regional Coordinator → Production Management

ERMv12_GroupA_TRANS-POP-VEG_20180901.gdb /
ERMv12_GroupA_TRANS-POP-VEG_20180901.ZIP
ERMv12_GroupB_TRANS_20181010.gdb /
ERMv12_GroupB_TRANS_20181010.ZIP



Data producer event 2018

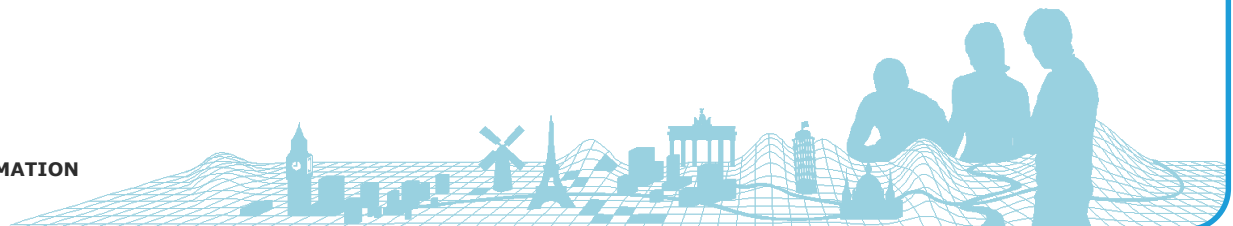


- Our colleagues at the State Geodetic Administration of the Republic of Croatia will host us
- Dates: Tuesday 6th and Wednesday 7th November 2018
- Location is Hotel Dubrovnik, Zagreb
- Accommodation form will be sent out quite soon as hotel need to know about room requirements
- Look forward to seeing you there!



Production year 2018

- Good luck for the production!
- Any questions now?
- If you have any questions later on, please contact your Regional Coordinator or EBRM@bkg.bund.de



Thank you for your attention



Contact:

Jürgen Spradau and Regine Elling
Federal Agency for Cartography and Geodesy
Richard-Strauss-Allee 11
60598 Frankfurt am Main / Germany

Email: ebm@bkg.bund.de

