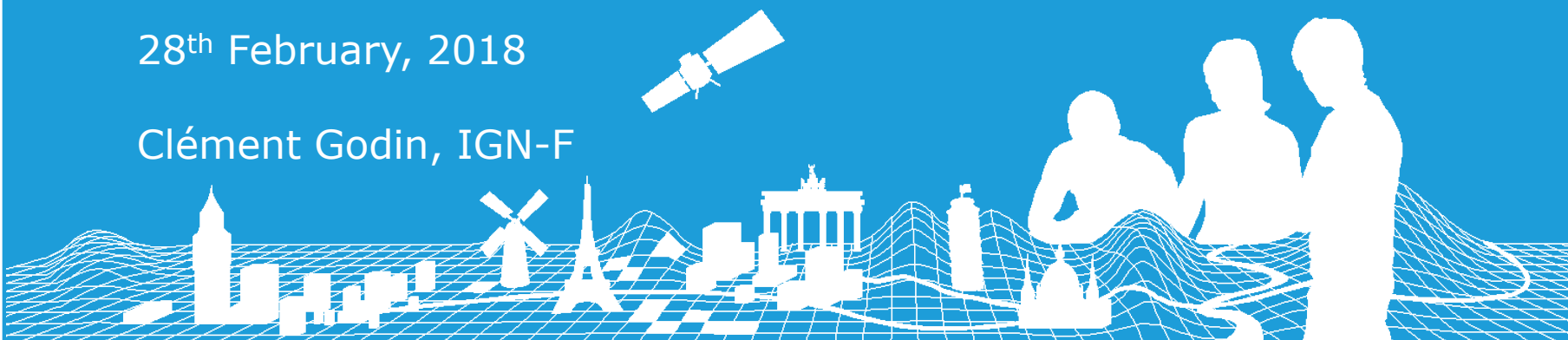


Production 2018 EGM

Webinar Technical Meeting of the EG Data Producers

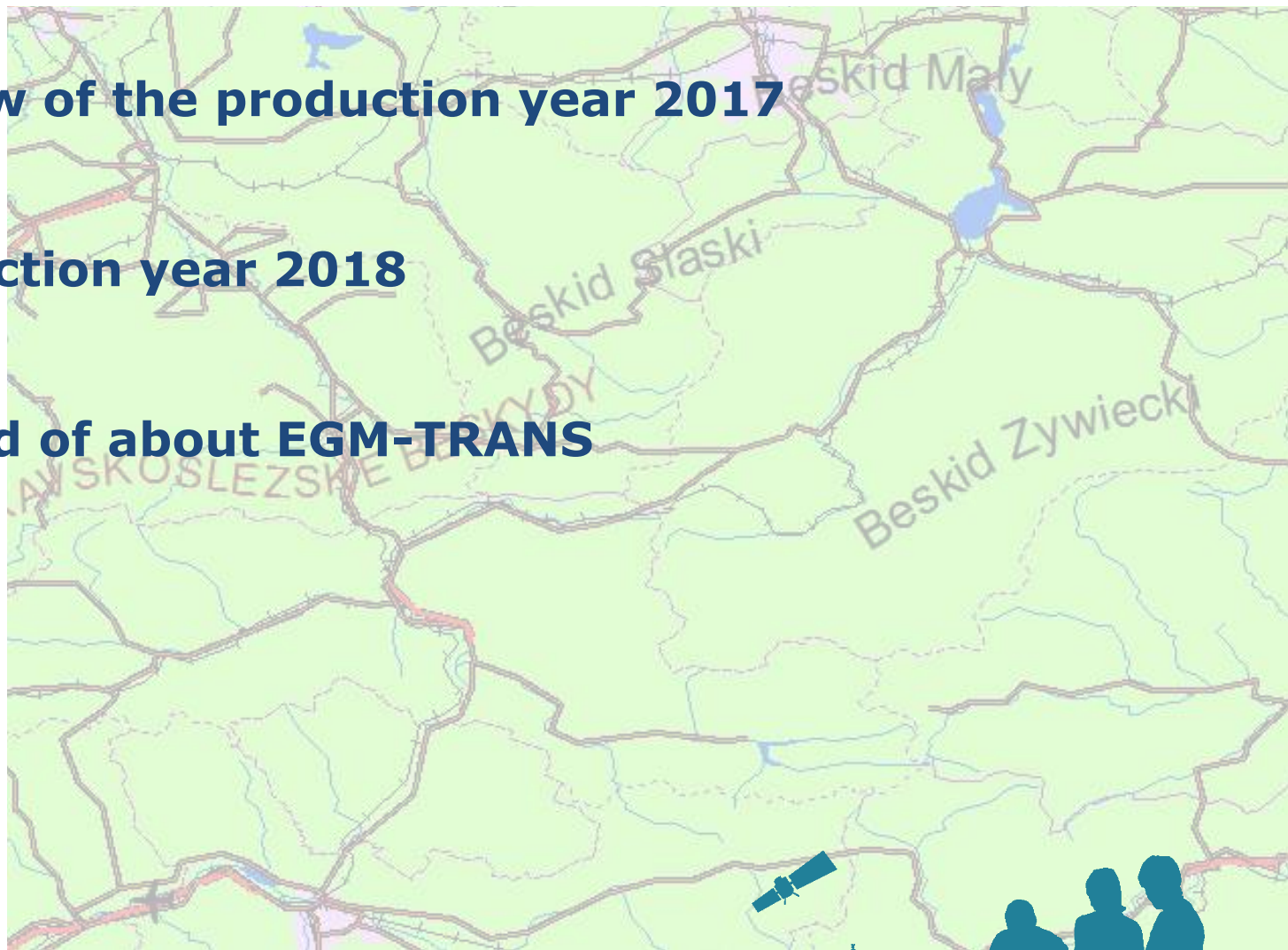
28th February, 2018

Clément Godin, IGN-F



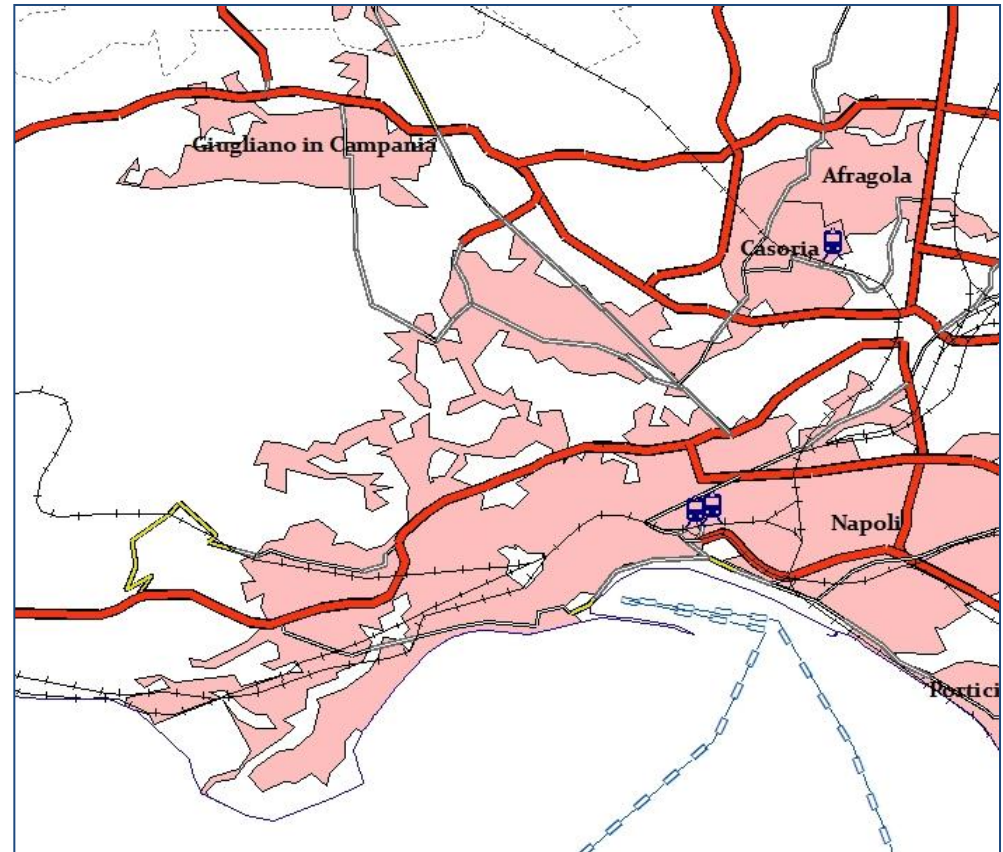
Content

- **Review of the production year 2017**
- **Production year 2018**
- **A word of about EGM-TRANS**



EGM v10.1 (year of production 2017)

- Input data
 - EBM v11
 - ERM v10.1
- Three themes updated
 - BND
 - POP
 - TRANS
- Deliveries
 - v10.0 delivered mid-October
 - Corrections
 - v10.1 released in December (final version)



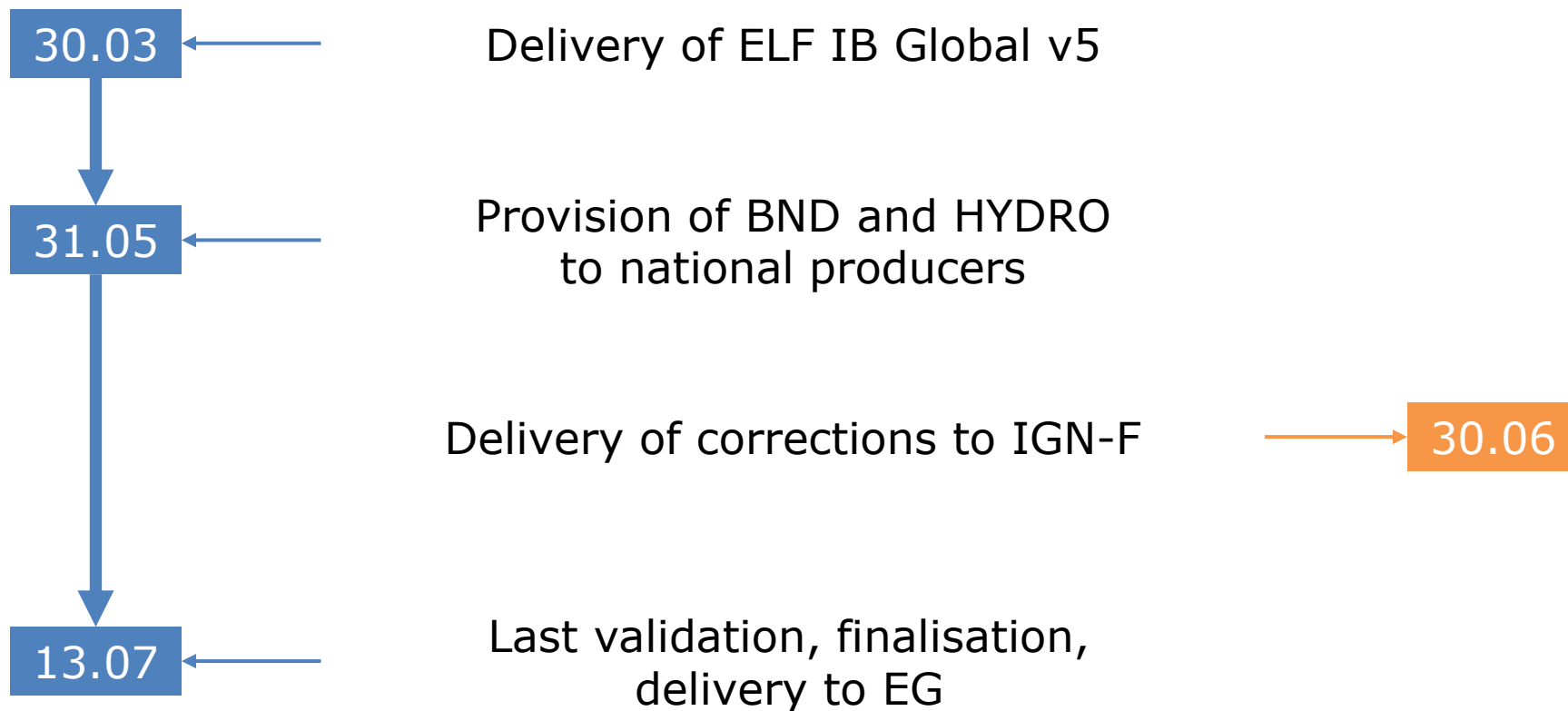
EGM update programme

- Aligned with the contact with Eurostat

		2015	2016	2017	2018
EBM version		10.1	11.1	12.1	13.1
ERM version		9.1	10.1	11.1	12.1
EGM version		8.0	9.0	10.1	11.0
EGM themes	BND	✓	✓	✓	✓
	HYDRO		✓		✓
	TRANS	✓		✓	?
	POP	✓		✓	

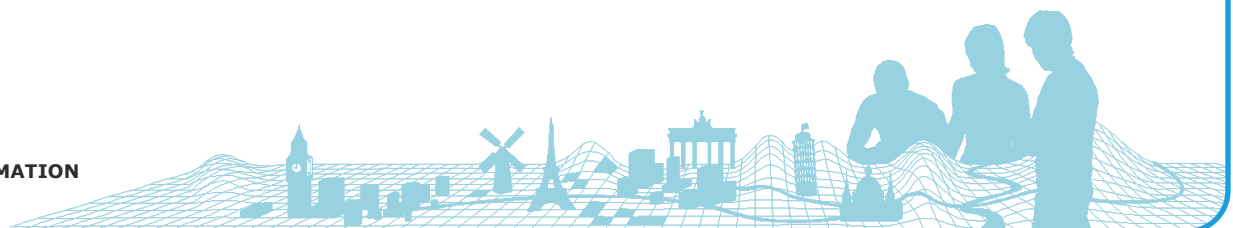


Time table for production of EGM in 2018



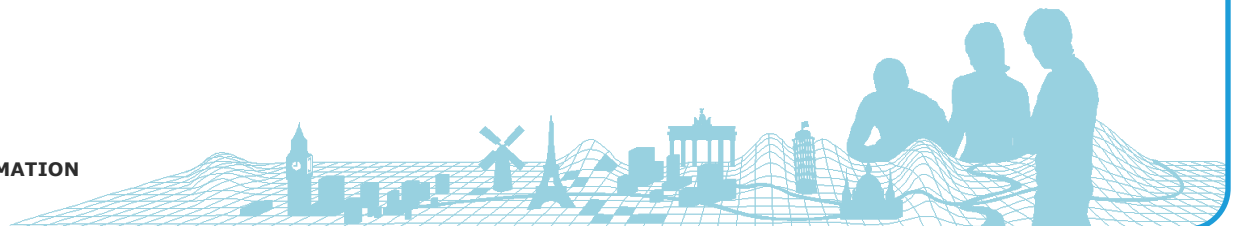
Corrections on EGM-TRANS

- Why we should deliver a corrected version of EGM-TRANS
 - Questionable selection of German railway network in v9.0
 - User complain about selection of Italian railway stations in v9.0
 - User complain about TRANS data on Georgia in v10.1
 - We realised data is missing!
- We're planning to deliver corrected TRANS with v11.0
 - If you national producers help us to correct errors you might have noticed on your national territory
 - If we have time...



EGM production year 2018

- Questions?
- If you have questions later on,
feel free to contact me
clement_god@ign.fr



Gracias

Bedankt

Teşekkürler

Merci

Go raibh maith agat

Köszönöm

Thank you for your attention

Благодаря

Tack

Dziękuję

Grazie

Ačiū

Danke

Děkuji

Tak

Tānan

Hvala

Takk

გმადლობთ

Obrigado

Grazzi

Ďakujem

Mulțumesc

Paldies

Ευχαριστώ

Thanks

Хвала

Kiitos

CONNECTING YOU TO THE
**AUTHORITATIVE GEO-INFORMATION
FRAMEWORK** FOR EUROPE

EuroGeographics



Contact

Clément GODIN

☎ +33 1 43 98 81 81

✉ clement.godin@ign.fr

