



REPUBLIC OF CROATIA  
State geodetic administration



# Activities in Croatian State Geodetic Administration

**Marijan Marjanović**

Technical Meeting of the EuroGeographics Data Producers  
6<sup>th</sup> to 7<sup>th</sup> of November 2018, Zagreb

# AGENDA

---

- Organizational structure of the State Geodetic Administration (SGA)
  - Spatial data in former state (till 1990)
  - Topographic development 1990. - 2018.
  - Official mapping
  - Usage of official mapping
-



# STATE GEODETIC ADMINISTRATION

---

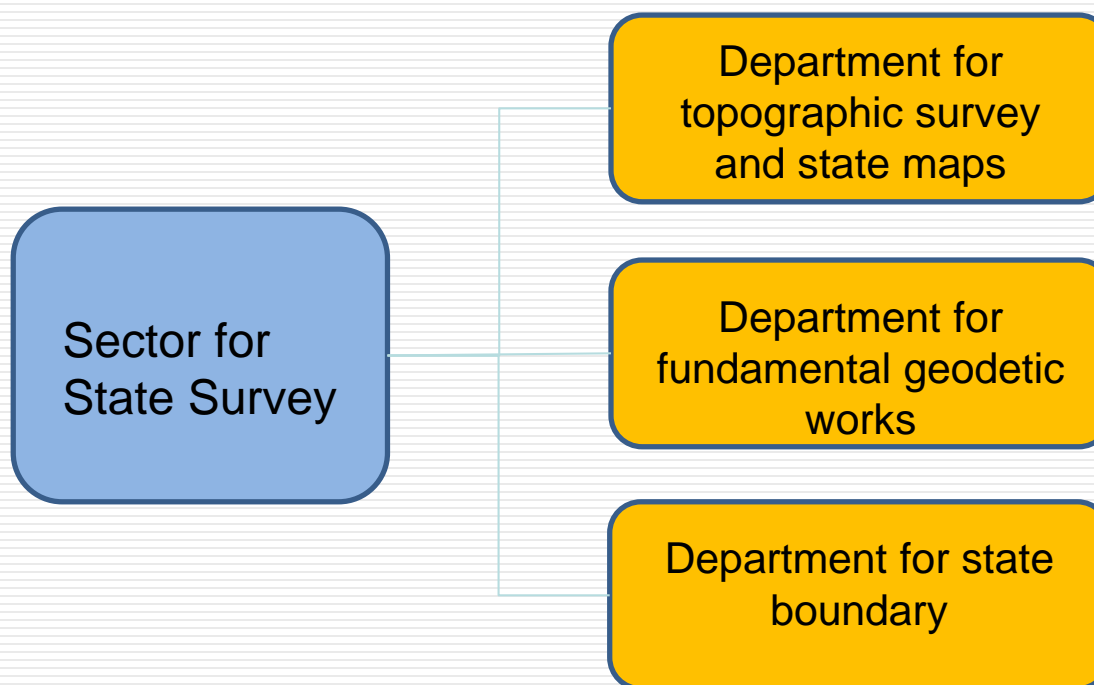
- Main spatial data provider in country
- SGA head office + Regional Cadastral Offices (20) and Branch Offices (92)
- Administrative and professional tasks in the field of:
  - Cadastre
  - Geodesy
  - Photogrammetry and Cartography
  - National Spatial Data Infrastructure





# ***SECTOR FOR STATE SURVEY***

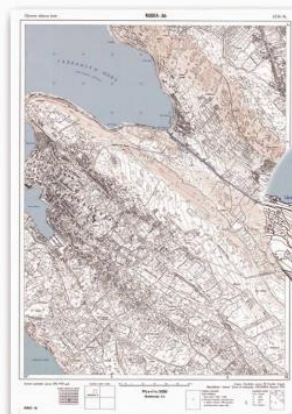
---



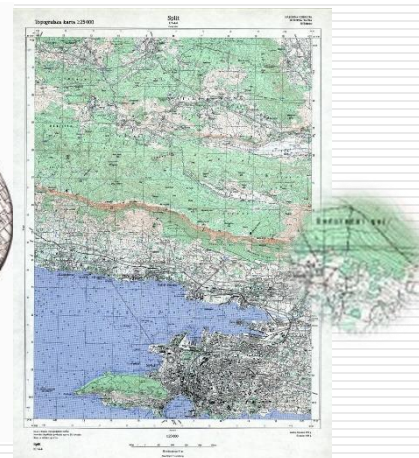
# Spatial data in former state (till 1990)

- Till 1990 all maps production process (from 1:25000 to 1:200000 maps) and photogrammetric works was reserved for Military geographic institute from Beograd.
- Only 1:5000 maps was made by civilian sector but for app 50% of national territory.

HOK - 1:5000



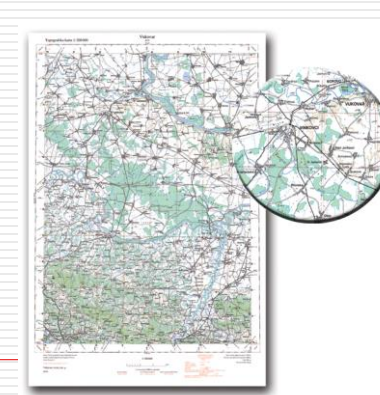
TK - 1:25000



TK - 1:10000



TK - 1:200000





# Topographic development 1990. – 2018.

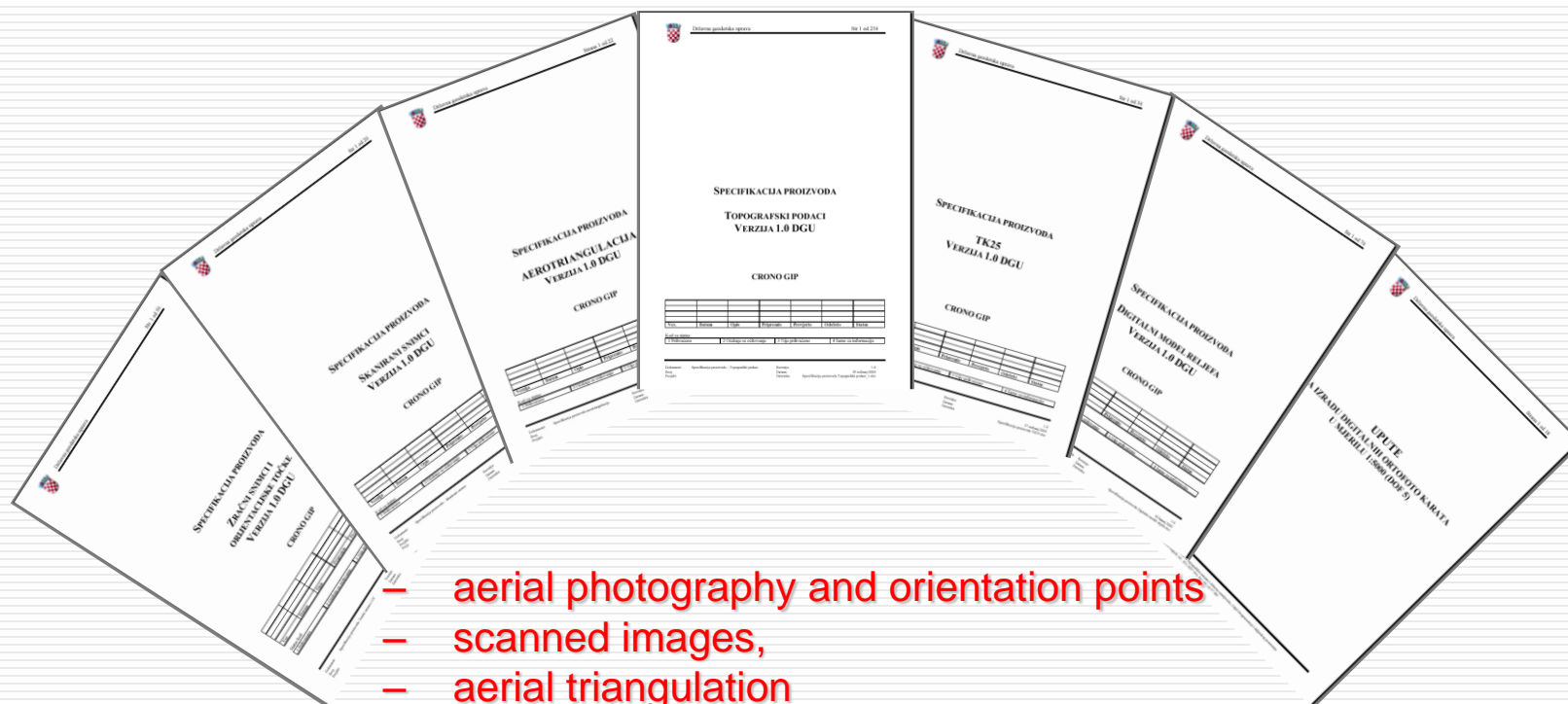
---

- **Studies produced for SGA in topographic domain in period 1992.-2008.**
- **STOKIS (Official Croatian Topographic - Cartographic Information System)**
- **CROTIS (Croatian Topographic Information System)**
- **Product Specifications**
- **Base Topographic Database (BTD)**





# Reference framework

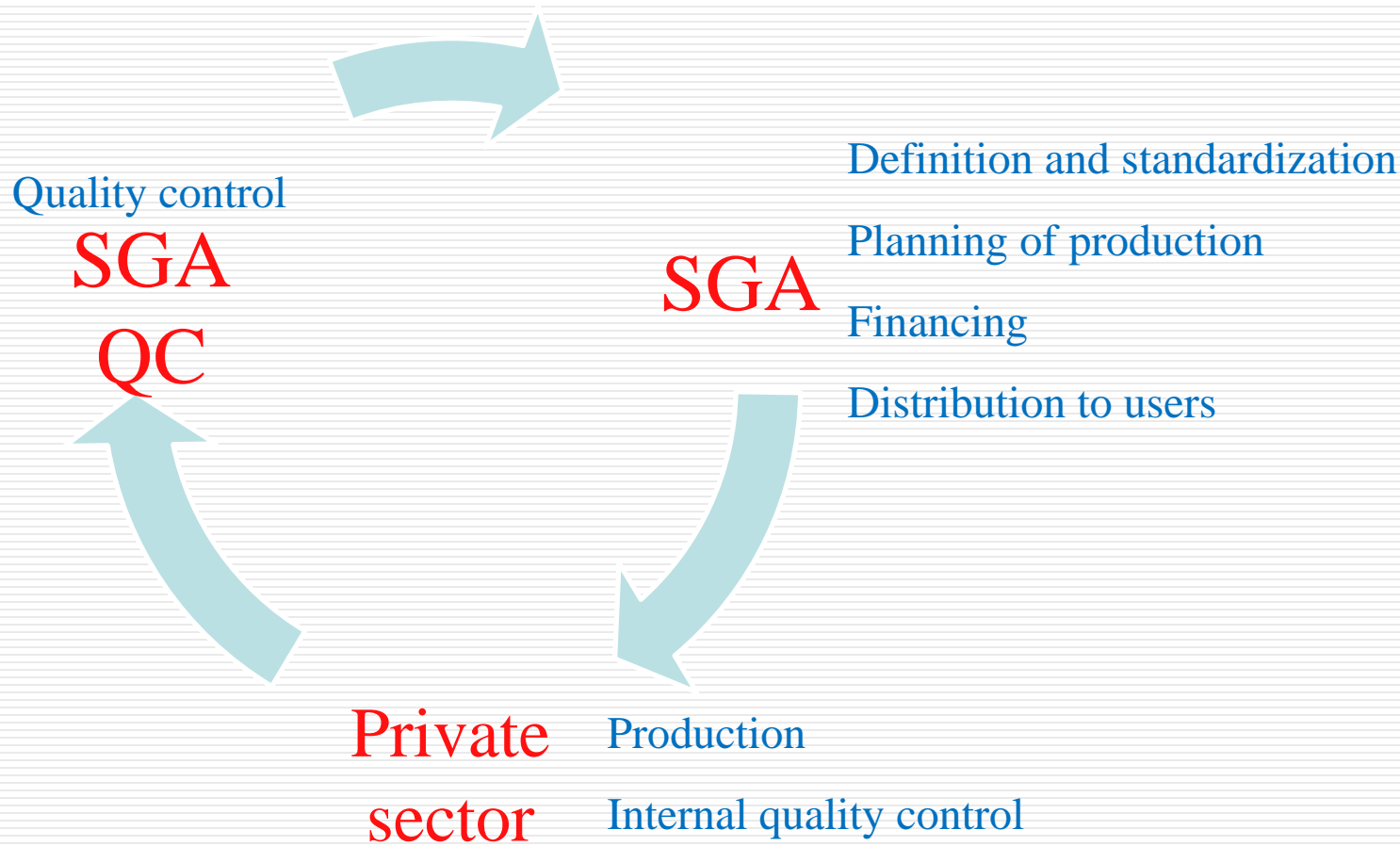


- aerial photography and orientation points
- scanned images,
- aerial triangulation
- topographic survey data,
- topographic map production
- for the production of the digital orthophoto map
- production of the digital terrain model



# *Production framework*

---



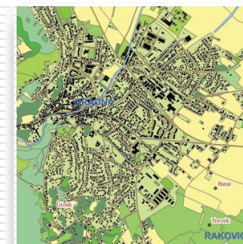
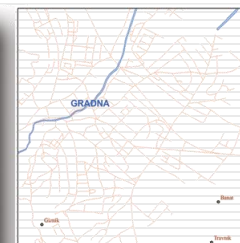




# *Basic Vector data*

## **BASIC TOPOGRAPHIC DATABASE - BTD**

- Large scale vector topographic data stored in spatial database
- Data divided to main topographical units  
**GEOGRAPHIC NAMES;  
BUILDINGS; UTILITIES;  
TRANSPORTATION; LAND COVER  
AND LAND USE; HIDROGRAPHY**
- Covered all territory of Republic of Croatia



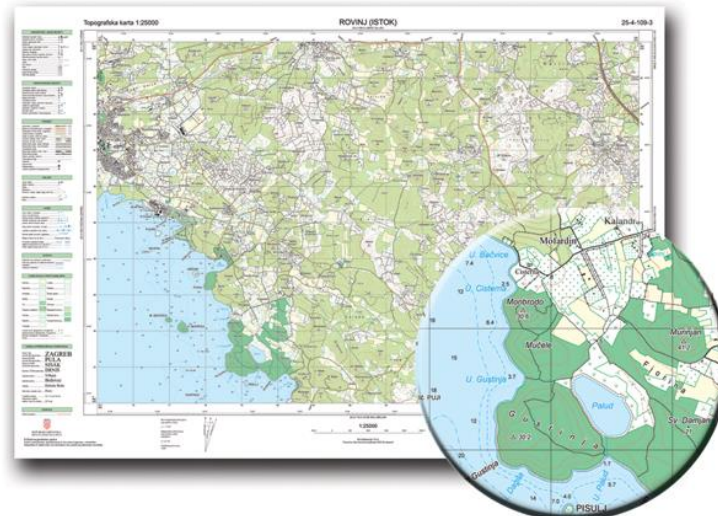


# *Official mapping*

## *Official state maps*

### TOPOGRAPHIC MAP IN SCALE 1:25000 – TK25

- Produced digitally
  - Produced: 603 / 603 Gauss-Krueger projection Bessel ellipsoid
  - Sheet size 50 x 70 cm
  - A sheet covers the area of 13,745 ha
- 
- Produced: 386 / 539 Transverse Mercator projection GRS80 ellipsoid
  - Sheet size 72 x 50 cm
  - A sheet covers the area of 15,000 ha
  - Multicolour print (3 or 4 colours)





REPUBLIC OF CROATIA

State geodetic administration



[www.dgu.hr](http://www.dgu.hr)

# Official mapping

## Official state maps – TK25



*2010 – in progress*

*(updating process ongoing)*

*Until 2010*

*“New – old” TK25*

**New cartographic projection HTRS96/TM and  
new map format of TK25**





REPUBLIC OF CROATIA

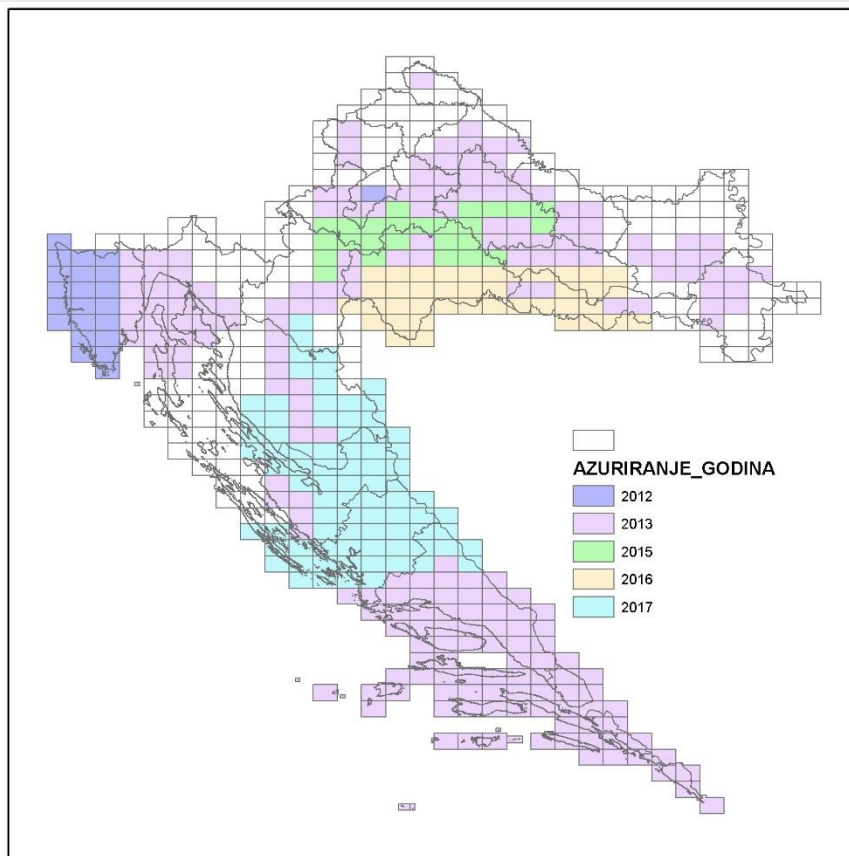
State geodetic administration



[www.dgu.hr](http://www.dgu.hr)

# Official mapping

## Official state maps – TK25 (2011 – 2018)



**Updated 72%**

**386 of 539 TK25**

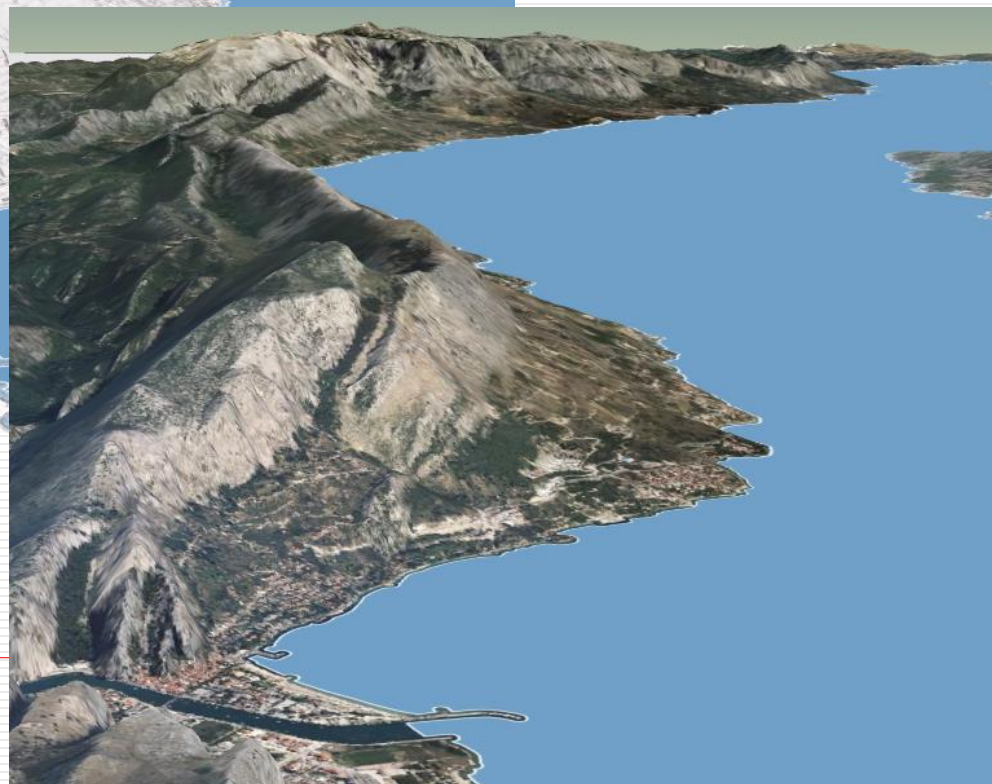
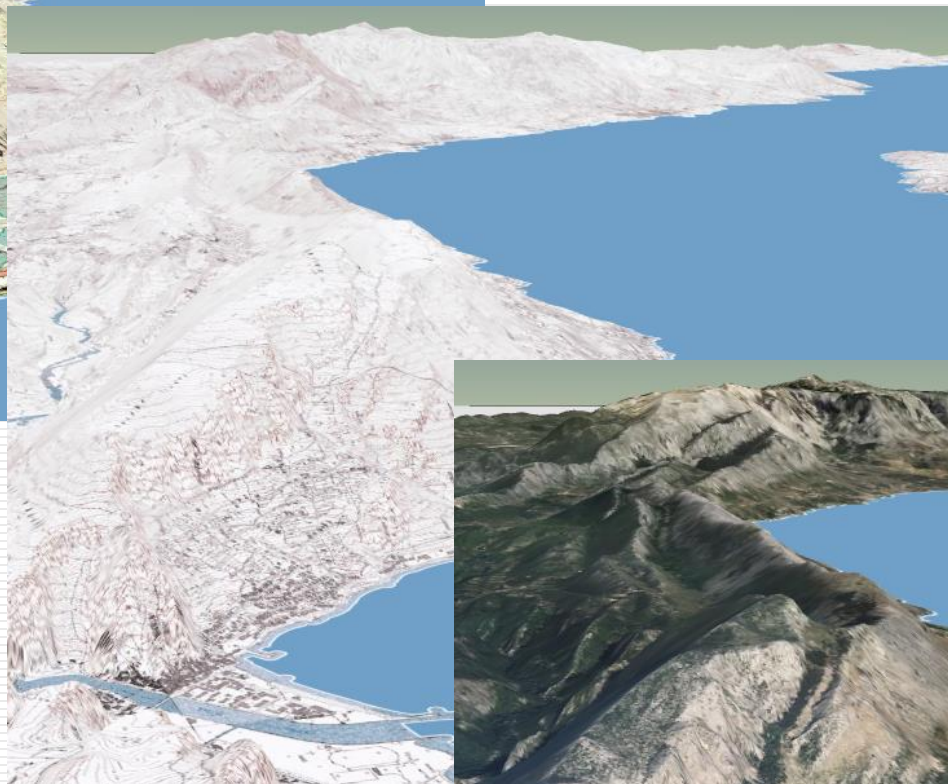
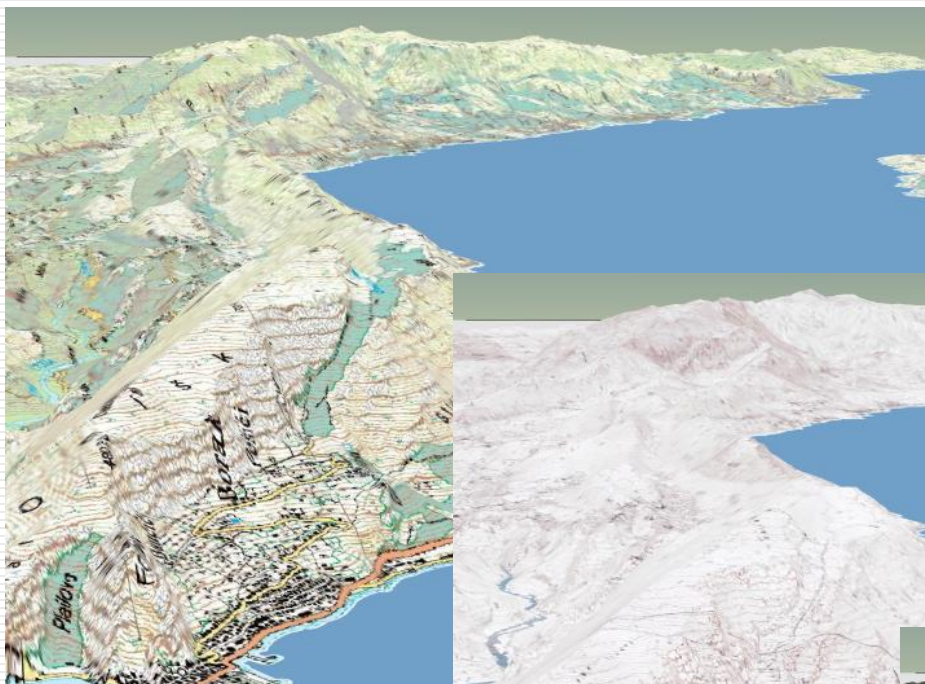
# Digital ortophoto map 1:5000

---

## Production cycles:

- 2011.
- 2014. – 2016.
- 2017. – 2018.
- 2019. – 2020.





<http://geoportal.dgu.hr/>  
Free WMS services



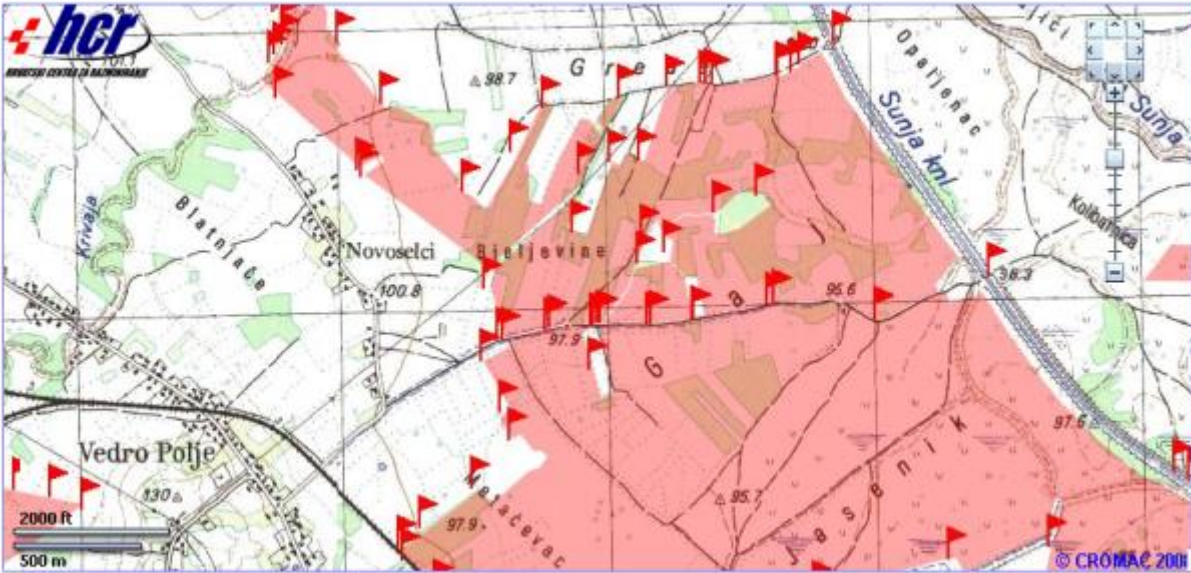


# Usage of official mapping

## Croatian mine action center

hrvatski english

UPUTE



**Slojevi**

- ☒ MSP Obilježavanje
- ☒ Općine
- ☒ Županije

[Uključi](#) [Isključi](#) [Legenda](#)

☐ Zoom Box  
Desni klik za  
isključivanje zoom-a

**Pretraživanje**

Pretraži:

Vrijednost:

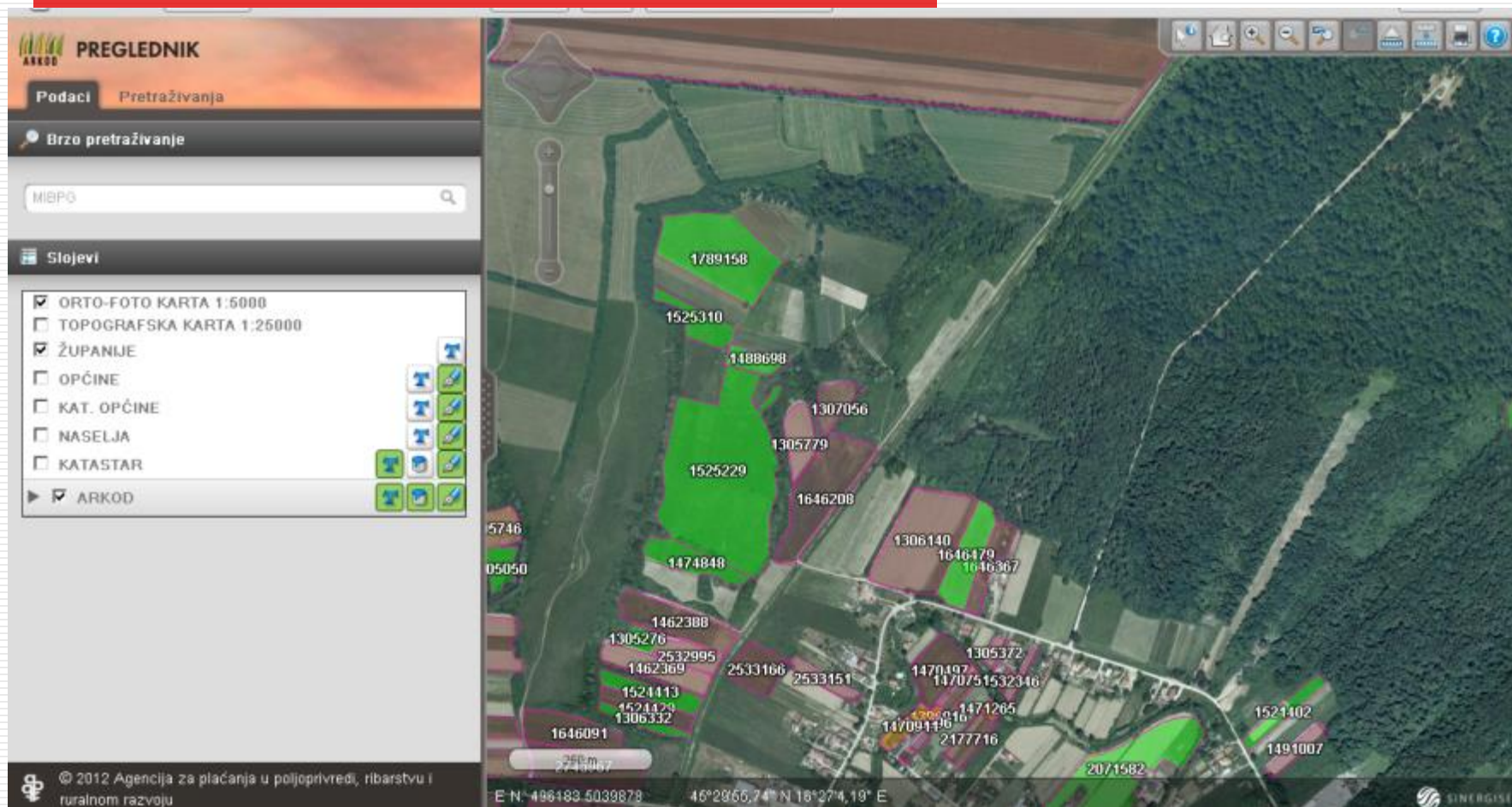
[Traži](#) [Traži RH](#) [Obriši pretraživanje](#)





# Usage of official mapping

## Ministry of Agriculture



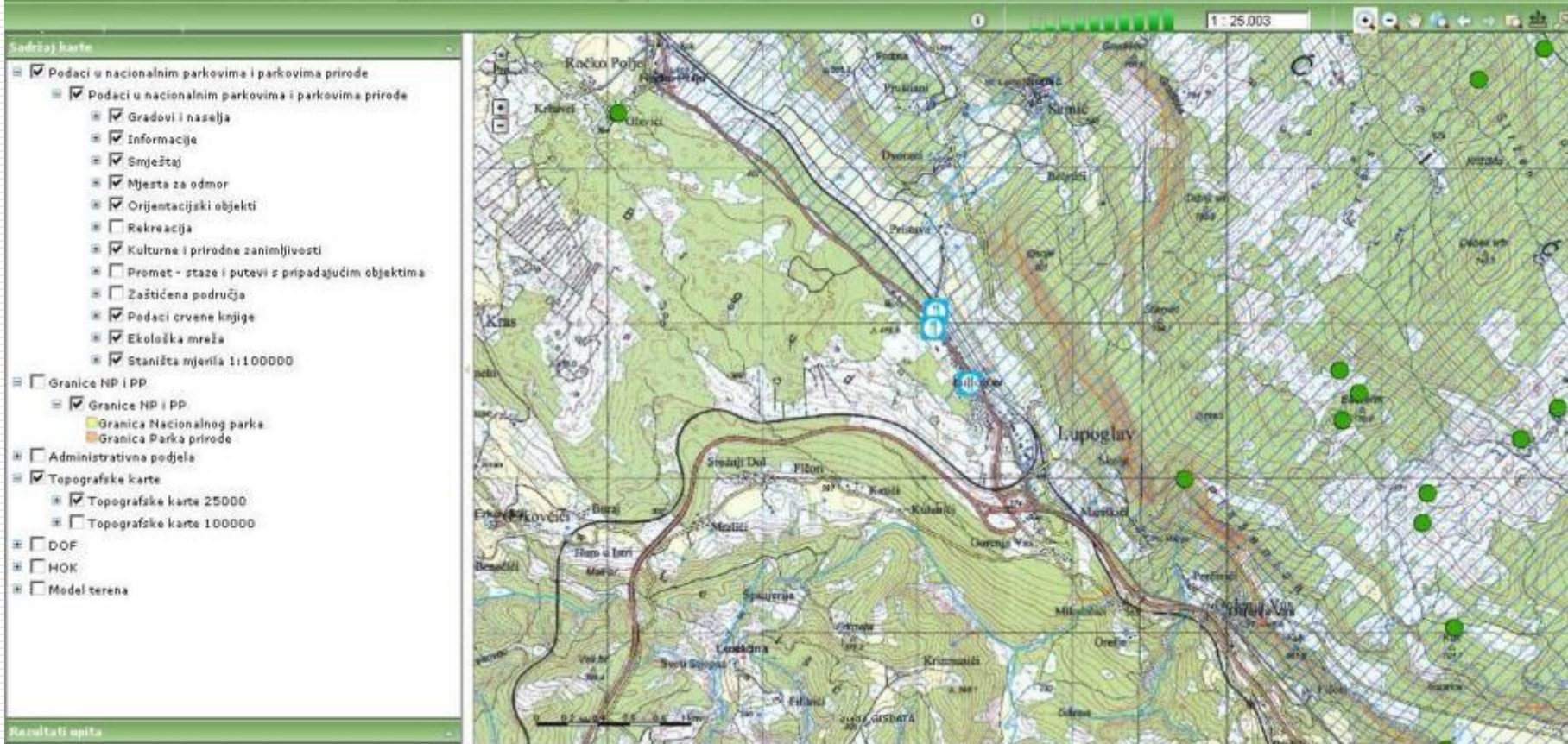


# Usage of official mapping

## Ministry of culture

GIS portal zaštite prirode Ministarstva kulture

Uvjeti korištenja Napomena korištenja Ministarstvo kulture Kontakt Pomoć

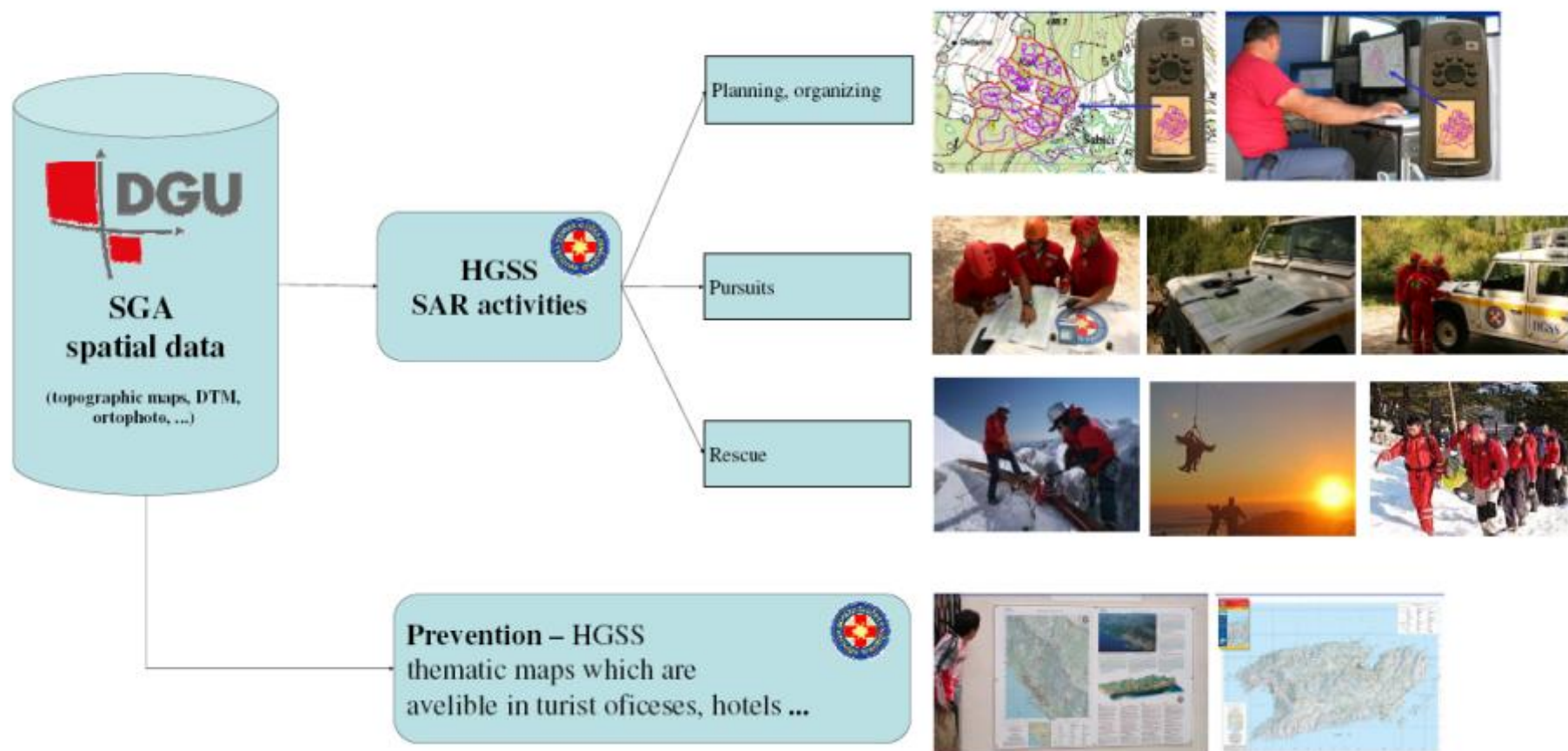






# Usage of official mapping

## Croatian Mountain Rescue Service





# ***Thank you for your attention***

---

[marijan.marjanovic@dgu.hr](mailto:marijan.marjanovic@dgu.hr)

---