



Sharing Experiences on the BEV the extension to Open Data (OD)

Heading towards spatial knowledge infrastructures

European Legislative Frameworks


Priority Data Sets Viewer



The application displays the availability and provides access to the selected priority data sets  used for environmental reporting. It allows filtering by environmental domain, environmental legislation and country, as well as individual priority data sets.

[Browse Priority Data Sets](#)

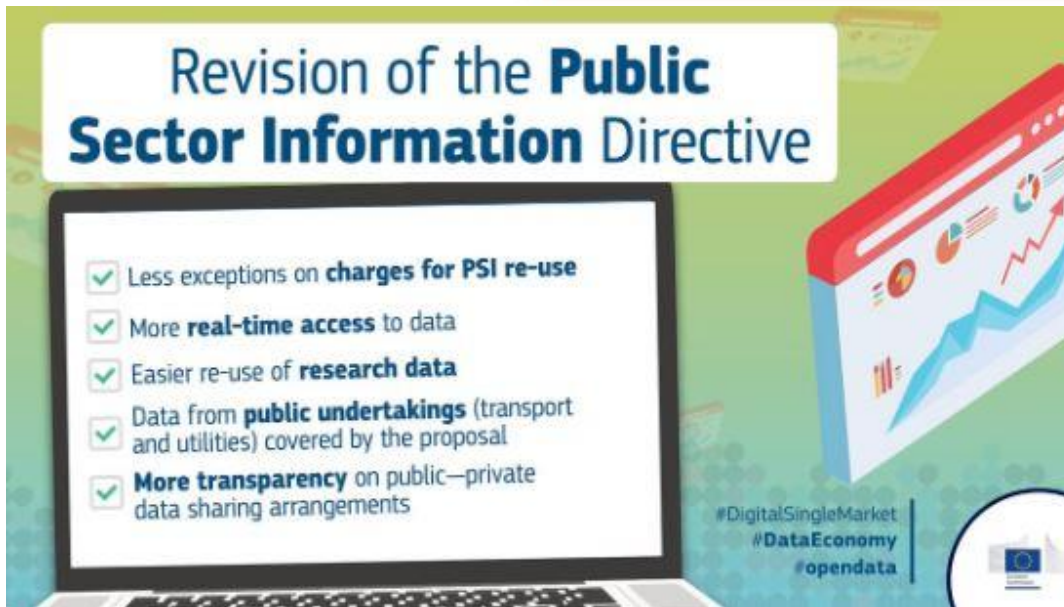
INSPIRE Thematic Viewer



The application displays the availability and provides access to all EU MS data sets falling under the scope of INSPIRE Directive filtered by data themes and countries (i.e. Annex I, II and III).

[Browse INSPIRE Thematic Data Sets](#)

Revision of the Public Sector Information Directive



- ✓ Less exceptions on **charges for PSI re-use**
- ✓ More **real-time access** to data
- ✓ Easier re-use of **research data**
- ✓ Data from **public undertakings** (transport and utilities) covered by the proposal
- ✓ **More transparency** on public–private data sharing arrangements

#DigitalSingleMarket
#DataEconomy
#opendata

Reference Validator

Validators to check whether their data sets, network services and metadata meet the requirements

States and the Commission in the INSPIRE Maintenance and Implementation Group.

[Go to INSPIRE validator](#)

<https://inspire-geoportal.ec.europa.eu/>

More EU legislation is expected, but delayed

Overview of data actions

[D] What data are we
talking about?

[H] Who holds
such data?

[A] What policy
intervention?

Good governance of data cannot wait

> Speaking: EC - Jiri PILAR

[D] Data voluntarily
made available by
data holders

[H] Public sector,
business,
individuals,
researchers

[A] Make such data easier to share in a controlled manner
(technical, legal and with organisational support);
Build trust in data sharing;
Ensure data interoperability across sectors

Data: a key element of Big Tech's market power

[D] Data held by online
platforms originating
from the users (both
businesses and
individuals)

[H] Online platforms

[A] Among other policy options,
identify appropriate data
access and data portability
remedies

High quality government data for SMEs & innovation

[D] 'High value' Open
Government Data
(core reference data)

[H] Public sector

[A] Make such data
available for re-
use free of charge

Better access to and control over data for a fair data economy

[D] Co-generated, IoT data
from industry and
individuals, Big Data
sources held by
business

[H] Business

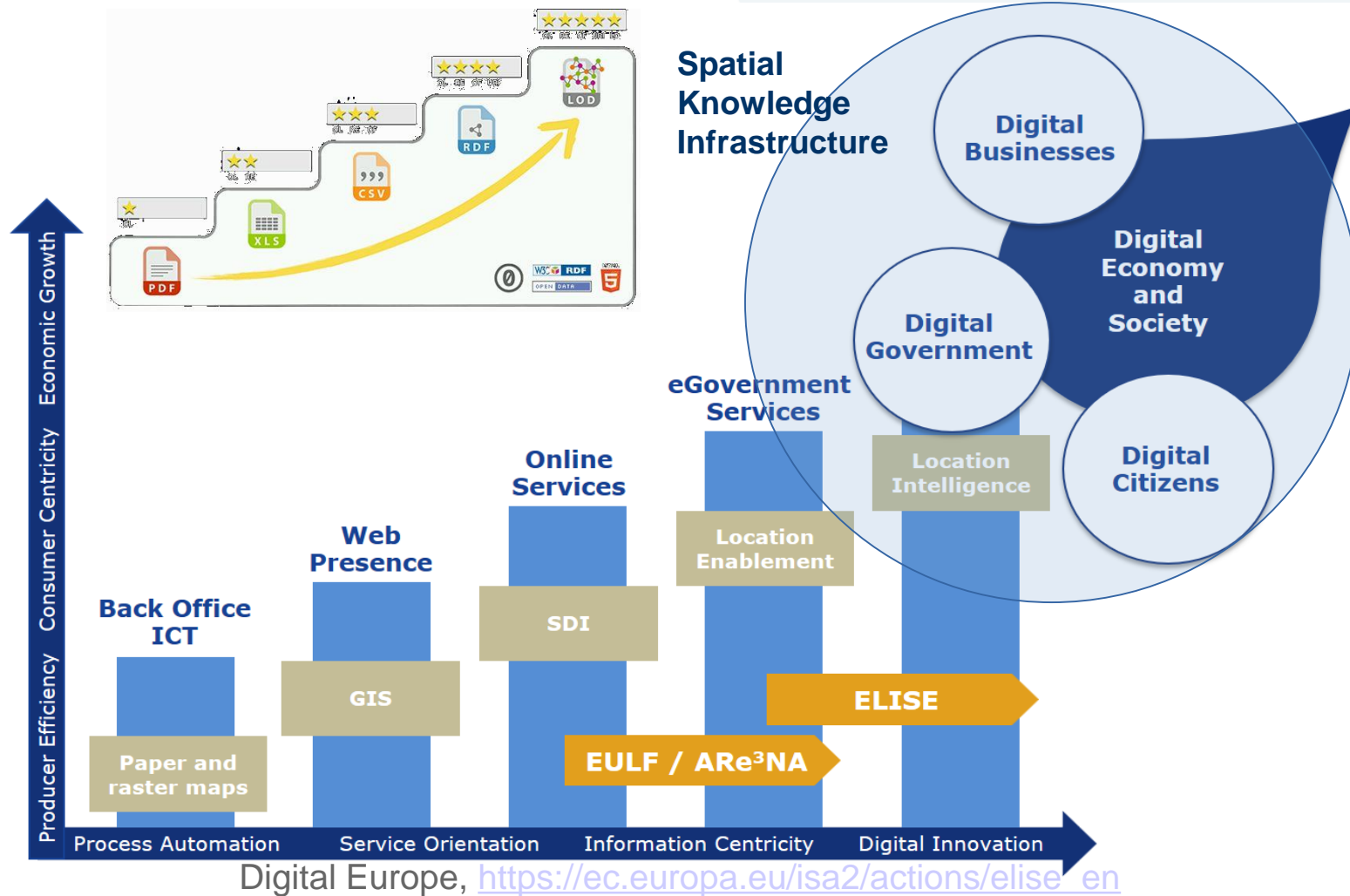
[A] Ensure flexible use of Big Data sources by
government for the common good; Establish fairness
in use of co-generated, IoT data; Make sure that
Europeans stay in control over their data vis-à-vis
third country jurisdictions; Examine IPR legislation
for possible obstacles



Draft of the PSI HVD (high value datasets) Implementing Act

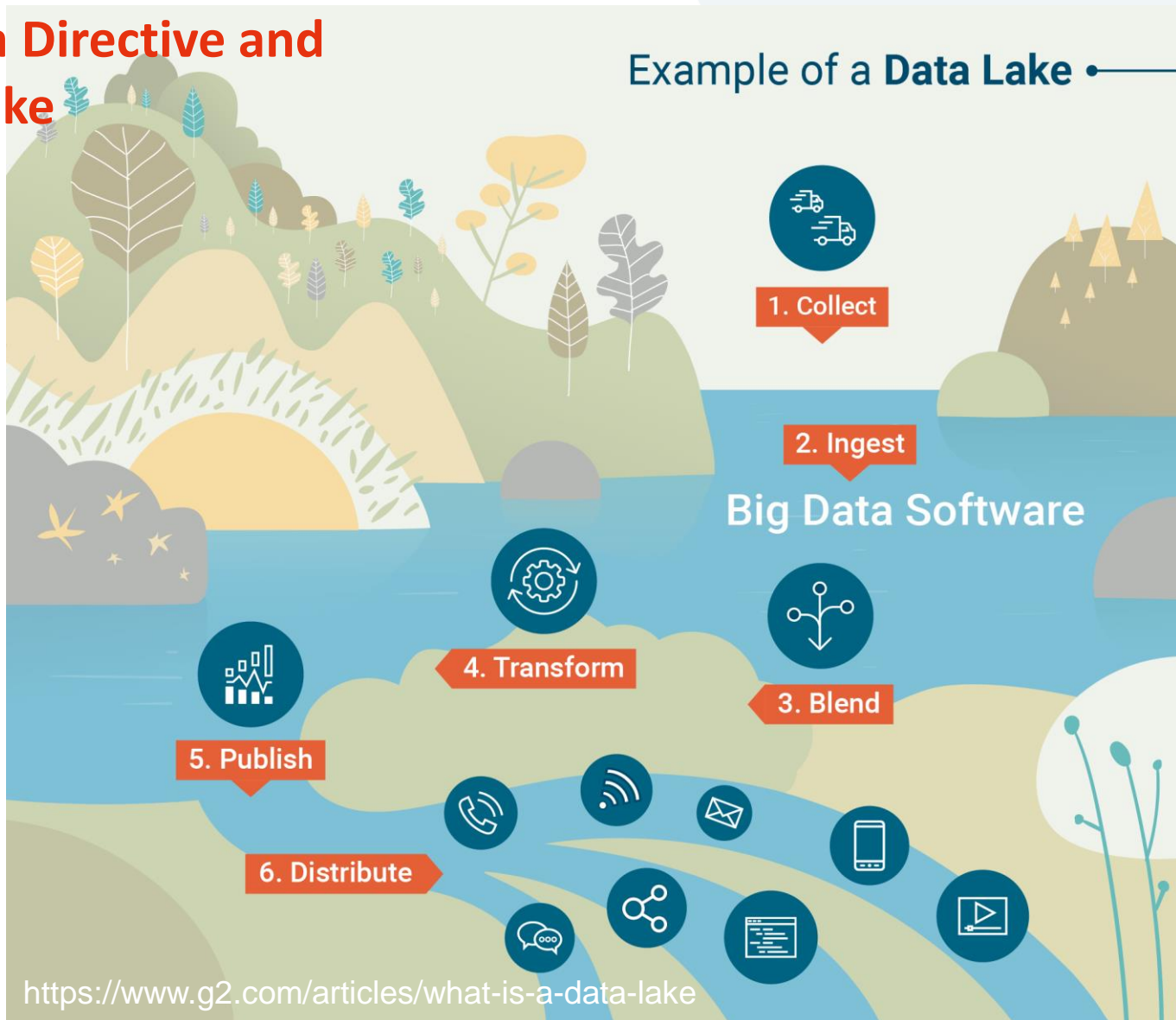
	Description	Administrative units	Place Names	Addresses	Buildings	Cadastral parcels
Openness	License and terms of use	CC0				
	Format	GeoPackage; GeoJSON; INSPIRE requirements.	GeoPackage; CSV; GeoJSON INSPIRE requirements.	GeoPackage; CSV; GeoJSON; INSPIRE requirements.	GeoPackage; GeoJSON; INSPIRE requirements.	GeoPackage; GeoJSON; INSPIRE requirements.
	Machine-readability	Mandatory				
	Availability of API, bulk download	Bulk download; INSPIRE distribution services; RestAPI (e.g. OGC API, ArcGIS RestAPI, Carto API).				
Documentation	Metadata (dataset content description)	INSPIRE				
	Documentation (incl. structure and semantics)	INSPIRE / GeoDCAT-AP				
	Data linking					
	Shared vocabularies/taxonomies	INSPIRE				
Completeness	Traceability	National geodata Catalog and open data catalog.				
	Update frequency and timeliness	Annual update	When necessary	When necessary	When necessary	Continuous update (close to real-time).
	Granularity	From municipalities to countries; sea-frontiers.	National coverage	National coverage	National coverage; Level of scale 1:5000 (minimum requirement).	National coverage; Level of scale 1:5000 or beyond (1:2000).
	Key attributes	National identification code; identification code of the upper administrative level; official name; country code; name in multiple languages (only for countries with more than one official language).	Name; name in multiple languages (only for countries with more than one official language); category; latitude and longitude (INSPIRE)	Latitude and longitude; house number; suffix of the number; name of the street; zip code ; name of the municipality; national identification code of the municipality; last update; type of position.	Footprint of the building; height ; entrances; floors; type of use.	Geometry of cadastral parcels; type of particle; particle code; references to the administrative area to which the particle belongs.

Spatial Knowledge Infrastructures



Open Data Directive and its Data Lake

Example of a Data Lake



Common European Dataspaces

COMMON EUROPEAN DATA SPACES

Rich pool of data
(varying degree
of accessibility)

Free flow of data
across sectors and
countries

Full respect
of GDPR

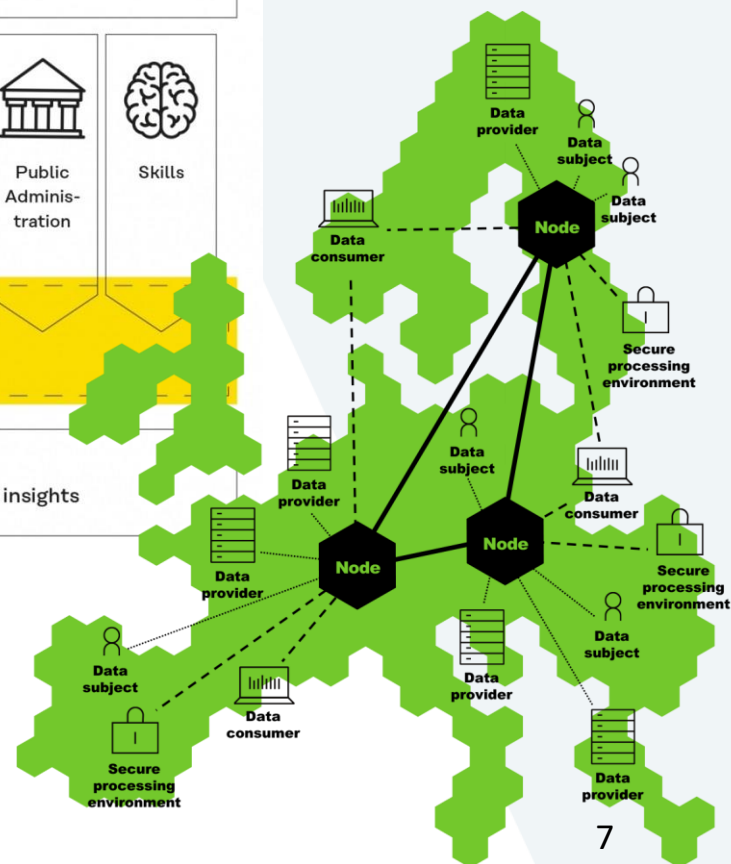
Horizontal
framework for
data governance
and data access

- Technical tools for data pooling and sharing
- Standards & interoperability (technical, semantic)

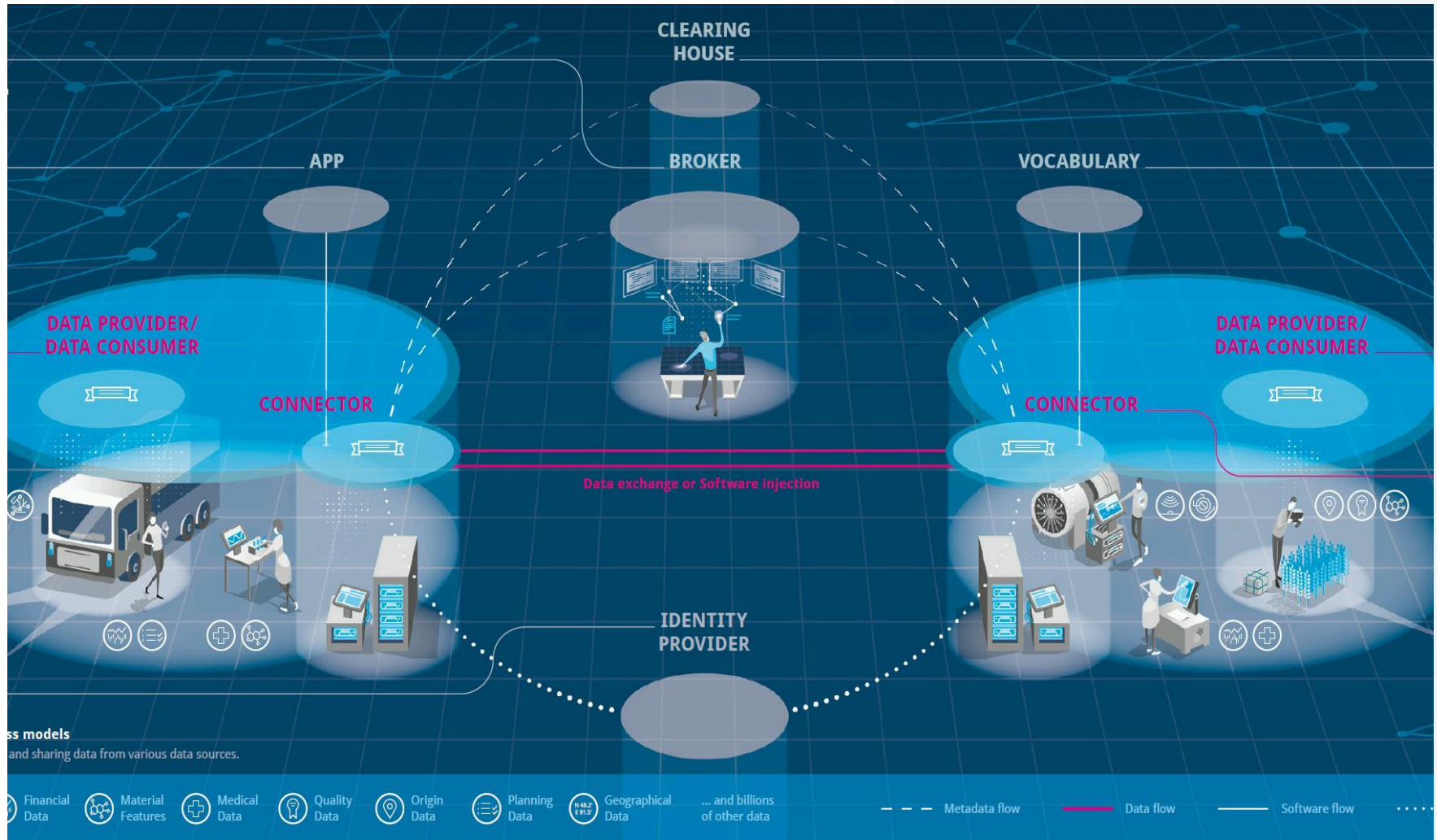
- Sectoral Data Governance (contracts, licenses, access rights, usage rights)
- IT capacity, including cloud storage, processing and services



- Services
- Collecting, combining, enriching and refining data into information and insights



Dataspaces and their “new” roles



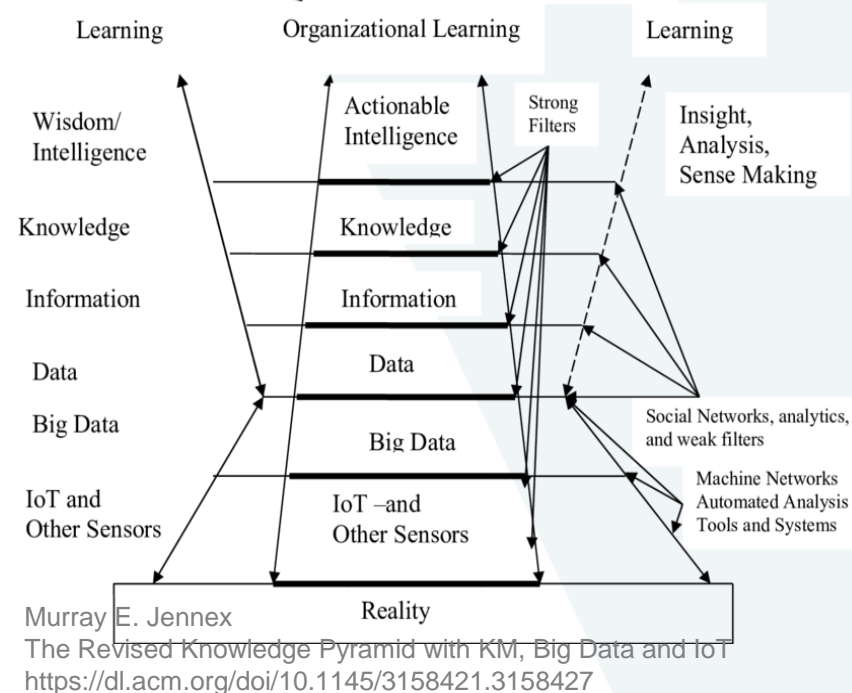
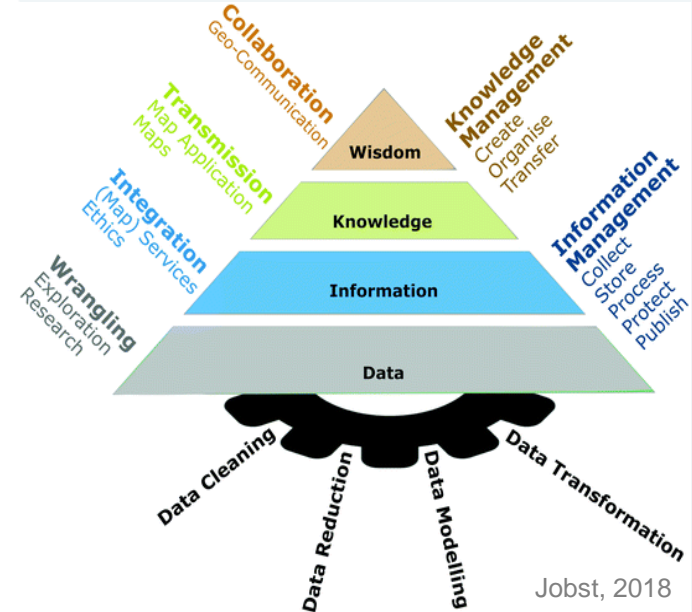
International Data Space Association <https://www.internationaldataspaces.org/>

Sharing Experiences

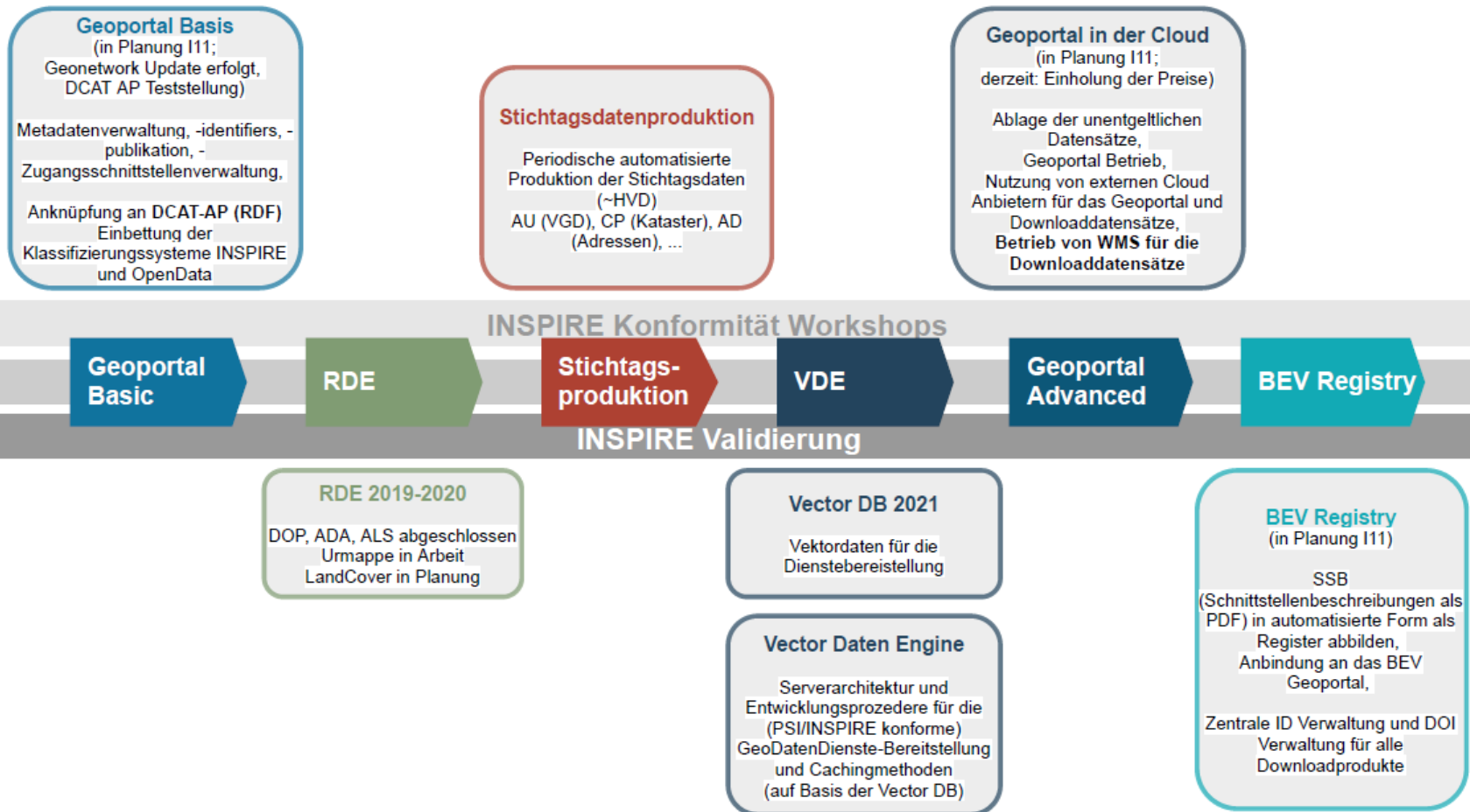
Spatial Knowledge Infrastructures

In terms of **data integration** ...


- Information characterizes an organized, structured and categorized set of data.
- *Knowledge* describes *meaningful* information, arranged for a use-case, following a concept and offering clear and *disambiguous identifiers*.
- **Wisdom** means that the *impact and usefulness* of data integration is known and the output can be controlled.



BEV roadmap for a common geospatial dataspace



BEV Geoportal data.bev.gv.at



 Bundesamt
für Eich- und
Vermessungswesen

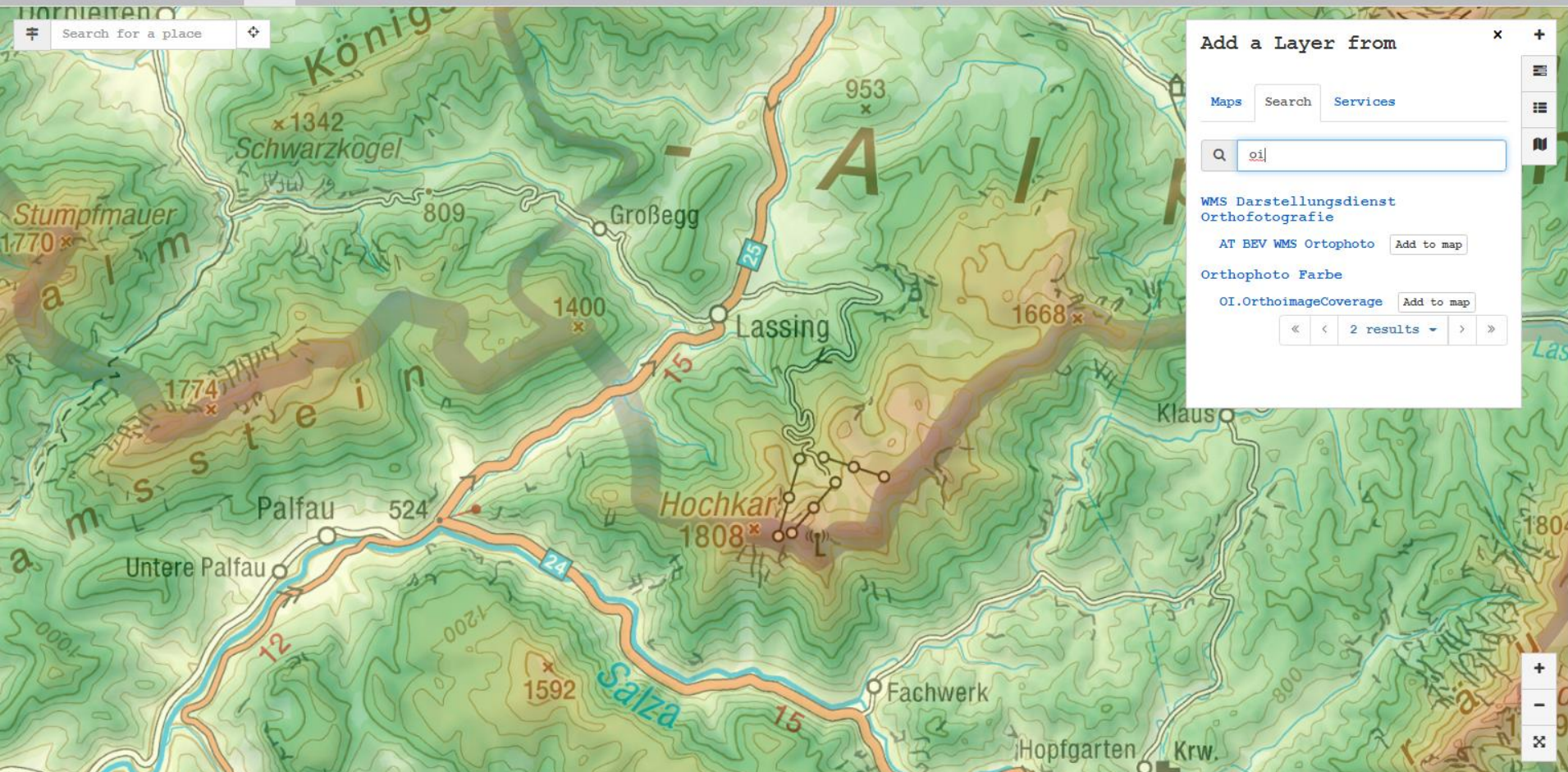
Datenkatalog BEV

Search

Map

English ▾

 Search for a place 



Persistent global data identifiers – landing page



Datenkatalog BEV

Digitales Landschaftsmodell - Bauten

Der Objektbereich Bauten umfasst in Form von hochgenauer Vektorgrafik mit Attributen als Basis für Geographische Informationssysteme flächendeckend für Österreich die Elemente:

- (a) Objekte (koordinative Bezugspunkte – POI) aus den Bereichen Kommunale Einrichtungen, Betriebseinrichtungen, Kultur, Freizeit und Sport, Schutzeinrichtungen
- (b) Sonstige linienhafte Objekte (z.B. Bob-, Rodelbahn)
- (c) Anlagen und Bauwerke für Versorgung (Stromleitungen und Strommasten)

Date (Revision) 2021-10-15T00:00:00

Date (Publication) 2022-01-01T00:00:00

Identifizier <https://doi.org/10.48677/cf69f625-cd76-40e0-9e75-3ce05c90f193>

Resource provider

 Bundesamt für Eich- und Vermessungswesen - Abteilung Landschaftsinformation

GEMET - INSPIRE themes, version 1.0 • Gebäude

Spatial scope • National

Use limitation Für dieses Produkt gilt die Standardlizenz Creative Commons CC-BY-4.0

Use limitation <https://creativecommons.org/licenses/by/4.0/>

Use limitation <http://inspire.ec.europa.eu/metadata-codelist/LimitationsOnPublicAccess/noLimitations>

Access constraints Other restrictions

Other constraints Für dieses Produkt gilt die Standardlizenz Creative Commons CC-BY-4.0

Other constraints <https://creativecommons.org/licenses/by/4.0/>

Other constraints <http://inspire.ec.europa.eu/metadata-codelist/ConditionsApplyingToAccessAndUse/noConditionsApplying>

Overviews

Spatial extent



Keywords


GEMET - INSPIRE themes, version 1.0

Gebäude

Spatial scope


National

Provided by

 Bundesamt
für Eich- und
Vermessungswesen

Share on social sites



 Access to the portal

Read here the full details and access to the data.

Associated resources

Not available

doi

Persistent global data identifiers – DOI management

DataCite Fabrica

About

Support

PTNC.BEV4DATA ▾

Bundesamt für Eich- und Vermessungswesen

Info Settings Prefixes **DOIs**

Create (Form)

Create (File Upload)

State

<input type="checkbox"/> Findable	149
<input type="checkbox"/> Registered	1

Resource Type

<input type="checkbox"/> Dataset	150
----------------------------------	-----

Year created

<input type="checkbox"/> 2022	6
<input type="checkbox"/> 2021	144

Prefix

<input type="checkbox"/> 10.48677	150
-----------------------------------	-----

Schema Version

Sharing Experiences

Type to search...

[Reset All](#)

150 DOIs

Digitales Landschaftsmodell - Verkehr Dataset

Abteilung Landschaftsinformation,

Dataset Dataset published 2022 via Bundesamt für Eich- und Vermessungswesen

Der Objektbereich Verkehr umfasst in Form von hochgenauer Vektorgrafik mit Attributen als Basis Informationssysteme flächendeckend für Österreich folgende Elemente: (a) alle Straßen (b) alle Schienen

Darüber hinaus sind auch die koordinativen Bezugspunkte mit Attributen von Verkehrsobjekten erfasst. Das System ermöglicht eine flächendeckende, hochgenaue Verortung von POI (points of interest) aus den Bereichen Bahnen, Flugverkehr und Bauwerke für Verkehr, Transport sowie Kommunikation und Versorgung.

Created January 17, 2022, 14:06:14 UTC. [Findable](#)



<https://doi.org/10.48677/8c633895-34dc-4981-adde-0a0ea3476349>

Digitales Landschaftsmodell - Geographische Namen Dataset

Abteilung Landschaftsinformation,

Dataset Dataset published 2022 via Bundesamt für Eich- und Vermessungswesen

Der Objektbereich Namen umfasst die koordinativen Bezugspunkte mit Attributen von derzeit mehr als 220 000 Namen von



FEEDBACK

Persistent global data identifiers – citation

DataCite Fabrica

Bundesamt für Eich- und Vermessungswesen / DOIs

10.48677/6854e2a0-166e-4679-9426-98c9d7a0a41d

 Update DOI (Form)

 Update DOI (File Upload)

Findable

Metadata Export

[DataCite XML](#)

[DataCite JSON](#)

[Schema.org JSON-LD](#)

[BibTeX](#)

DOI created

December 17, 2021, 14:34:16 UTC

DOI registered

December 17, 2021, 14:34:18 UTC

DOI last updated

December 17, 2021, 14:34:18 UTC

Schema 

[DataCite Metadata Schema 4](#)

URL

<https://data.bev.gv.at/geonetwork/srv/metadata/6854e2a0-166e-4679-9426-98c9d7a0a41d>

Metadata

Verwaltungsgrenzen (VGD) - Stichtag 01.10.2021 BEV Dataset

Vermessungsämter,

Dataset Dataset published 2021 via Bundesamt für Eich- und Vermessungswesen

Die Verwaltungsgrenzen Stichtag BEV beinhalten die Grenzen der Verwaltungseinheiten Österreichs

Die Daten sind für folgende Grenzen vorhanden: 1) Katastralgemeindengrenze 2) Gemeindegrenze

Gerichtsbezirksgrenze 5) Vermessungssprengelgrenze 6) Finanzamtsbereichsgrenze 7) Bundesländergrenze



 <https://doi.org/10.48677/6854e2a0-166e-4679-9426-98c9d7a0a41d>

Citation

Vermessungsämter. (2021). *Verwaltungsgrenzen (VGD) - Stichtag 01.10.2021 BEV* [Data set]. Bundesamt für Eich- und Vermessungswesen.

<https://doi.org/10.48677/6854E2A0-166E-4679-9426-98C9D7A0A41D>

[About](#)

[Support](#)

[PTNC.BEV4DATA](#) ▾



About DataCite

[What we do](#)

[Governance](#)

[Members](#)

Services

[Assign DOIs](#)

[Metadata search](#)

[Event data](#)

Resources

[Metadata schema](#)

[Support](#)

[Fee Model](#)

Contact us



[Imprint](#)

 [FEEDBACK](#)

Thank You!



Markus Jobst, markus.jobst@bev.gv.at
Sharing Experiences