

# A Coherent Data Foundation for a Digital Denmark

Chief Adviser Peter Knudsen

[peknu@sdfi.dk](mailto:peknu@sdfi.dk)



Agency for Data Supply  
and Infrastructure

# Transformation of organisation

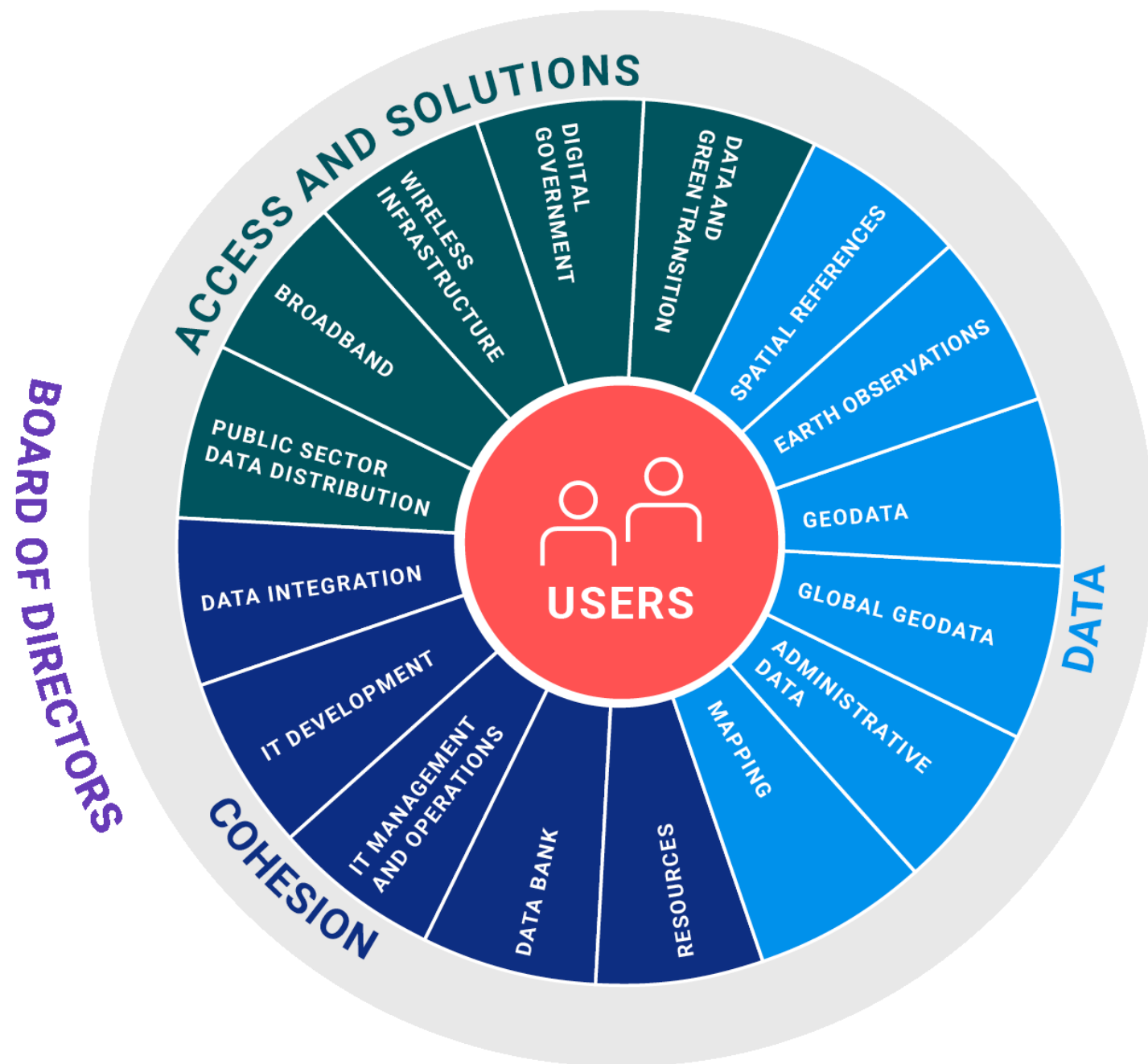
- New role as Basic Data authority
- New area of responsibility: tele infrastructure

## Implications

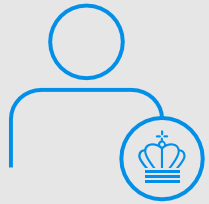
- Professionalization
- Increased usage
- Critical infrastructure
- Honest broker



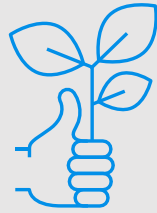
# Our Organisation



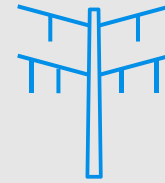
# In a digital society, trust is built on access to good and coherent data



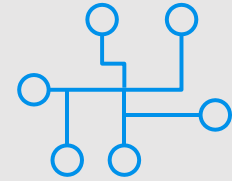
Confidence in  
data-based decisions  
must be ensured



Society's major  
transitions must be  
supported

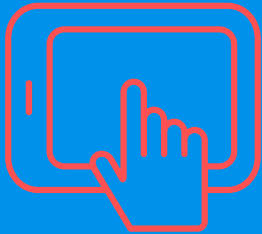


An up-to-date  
telecom  
infrastructure is a  
prerequisite for a  
digital society



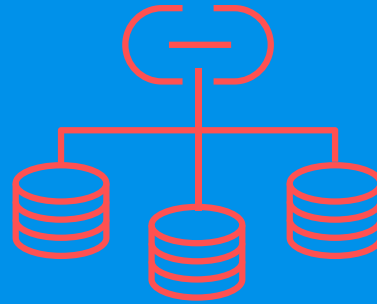
Unlocking the  
potential of a  
smarter society

# We have Three objectives to strengthen the foundations of digital Denmark



**We will help create digital solutions of strategic importance to society**

We help our partners unlock the potential of telecom infrastructure and public data in their society-critical tasks and businesses.



**We will create an up-to-date and authoritative data foundation**

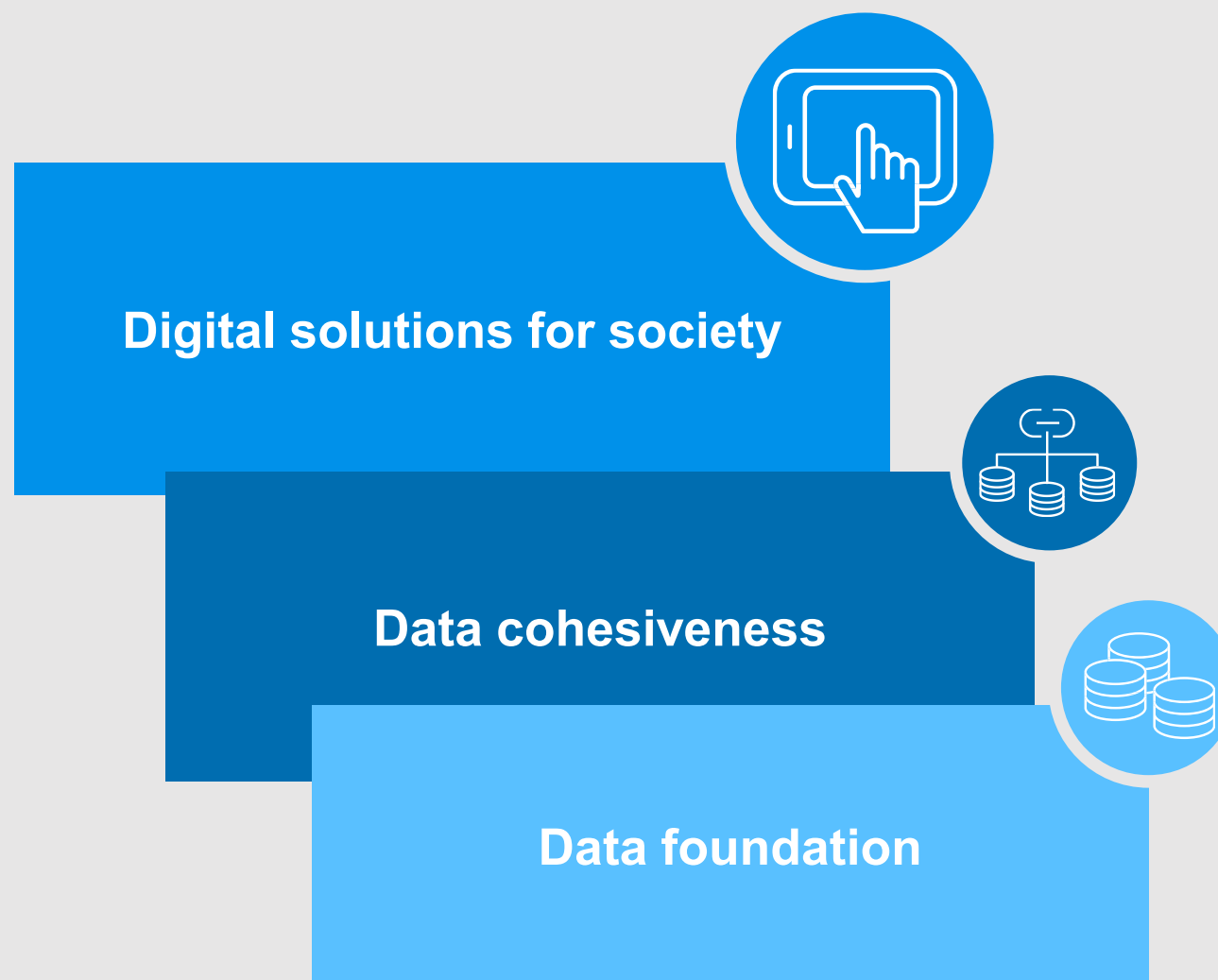
We want to create a data foundation that expresses our geographical reality in the right resolution and timeliness. Data must be transparent and of such a high quality that it can be used in fundamental ways by governments, citizens and businesses.

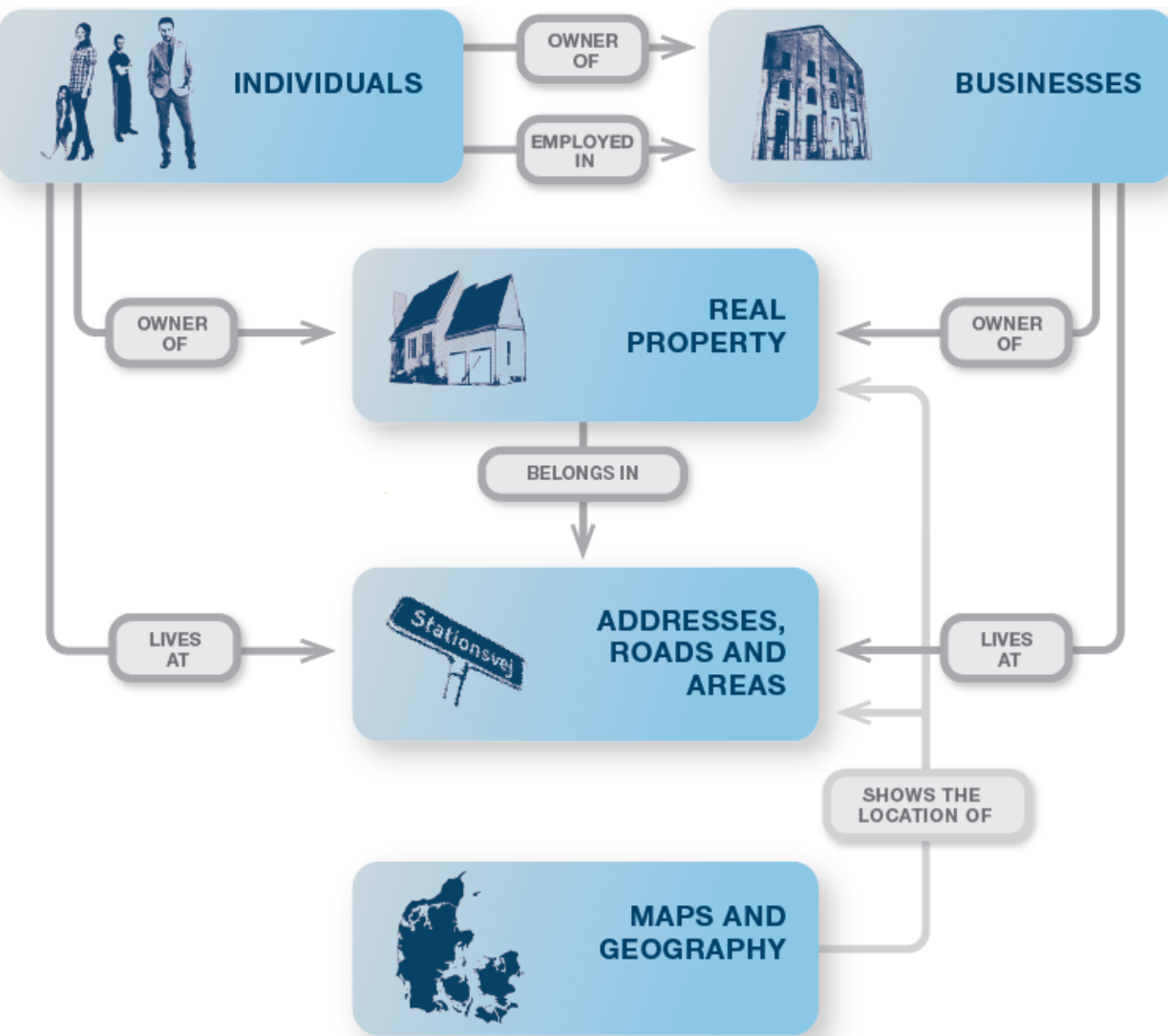


**We will create coherence in data and ensure accessibility through well-functioning digital infrastructures**

We provide access to data and a strong framework for telecom infrastructure, enabling users to use and connect data across sectors and devices, which in turn allows society to manage the major transitions of the future.

# Digital solutions must be built on a good data foundation and data cohesiveness





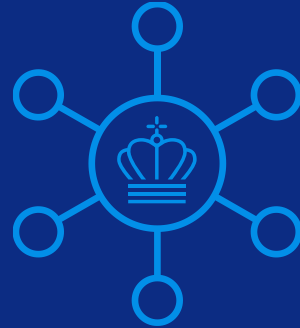
# Introduction: Basic Data

- Core information about individuals, businesses, real properties, buildings, addresses, maps and geography
- Used and re-used throughout the public sector
- High quality data which forms essential basis for public authorities
- Also used in the private sector

# Distribution of Basic Data on the Data Distributor



Webservices, file download and events



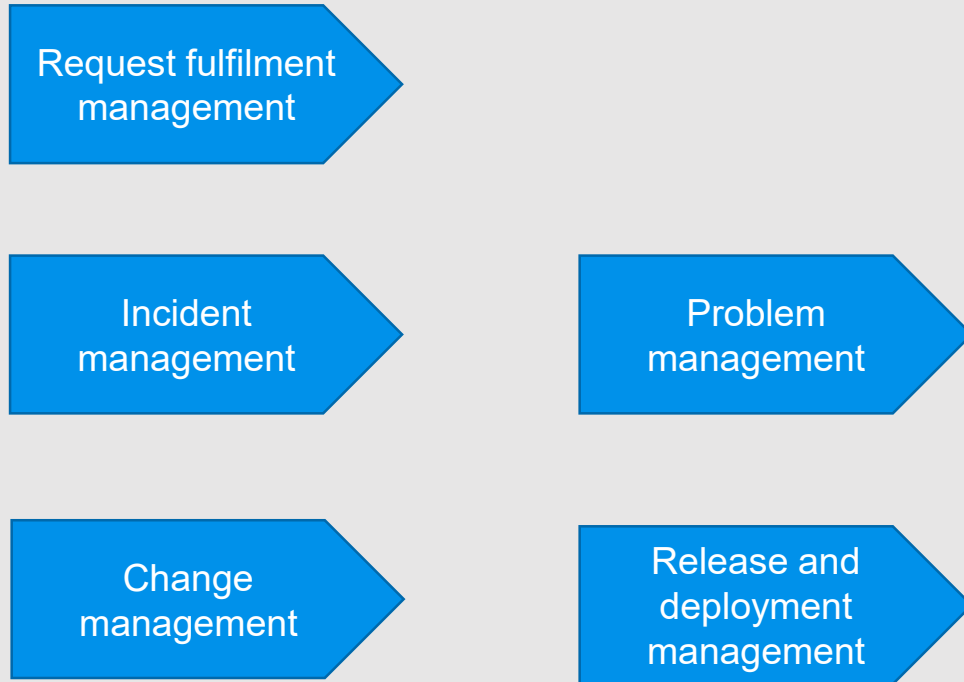
Uniform quality with a secure and stable operation on a high level



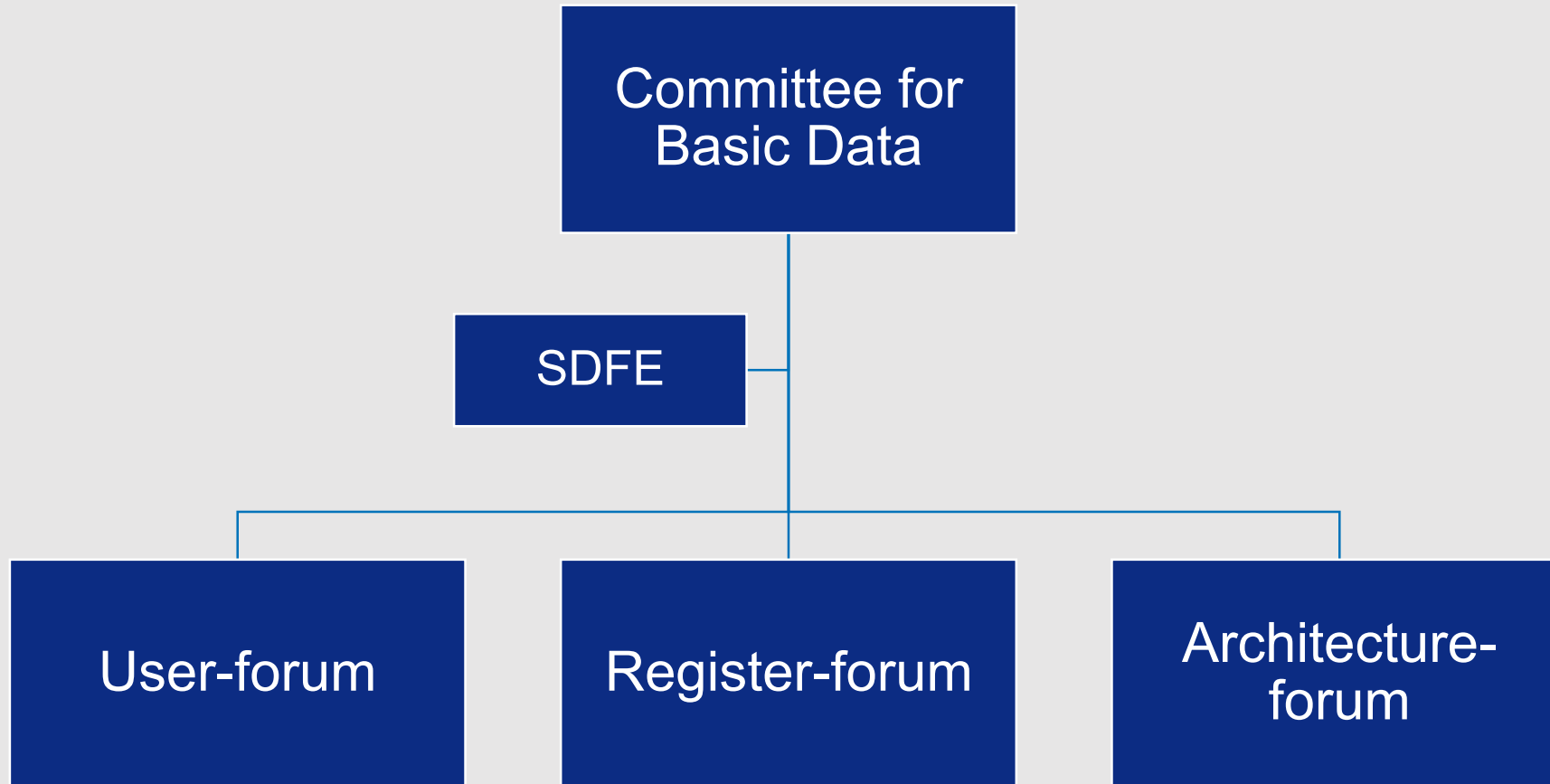
Basic Data can be combined across domains due to a coherent data model



# Operation processes



# Governance of Basic Data





# Basic data is a success

- Coherent and authoritative data infrastructure for the digital Denmark
- Documented benefits above 600 mill. Euro
- Winner of the Digitization prize 2023
- From 2022 we are giving out a Basic Data prize together with the Association for IT businesses



An aerial photograph of a lush green agricultural field, possibly corn, with a road running diagonally across the upper right portion. Long shadows from trees or structures are cast across the field from the upper left. The text is overlaid on the left side of the image.

# **‘Future of Basic Data’**

**Strategic framework for Basic Data 2022-2027**



# Overview

Overview of efforts within each focal point and phase:

| Focal points / Phases             | Consolidation  | Further development   | Future prospects  |
|-----------------------------------|--|---|---|
| <b>Focused distribution</b>       | <ul style="list-style-type: none"><li>• Improvement of the existing distribution</li><li>• Data formats</li></ul>          | <ul style="list-style-type: none"><li>• Completion of re-tendering</li><li>• Analysis of distribution landscape</li><li>• Compiling of data</li></ul> | <ul style="list-style-type: none"><li>• New technologies</li></ul>                                    |
| <b>Optimized data model</b>       | <ul style="list-style-type: none"><li>• Quality boost of the data model</li></ul>  | <ul style="list-style-type: none"><li>• Alignment of model and implementation</li></ul>   | <ul style="list-style-type: none"><li>• More data models</li></ul>                                    |
| <b>Basic Data of high quality</b> | <ul style="list-style-type: none"><li>• Product declaration of Basic Data</li><li>• Optimization of data quality</li></ul> | <ul style="list-style-type: none"><li>• Improvement of data quality</li><li>• Characteristics of Basic Data</li></ul>                                 | <ul style="list-style-type: none"><li>• Expansion of Basic Data</li><li>• New types of data</li></ul> |
| <b>Binding cooperation</b>        | <ul style="list-style-type: none"><li>• Evaluation of Basic Data governance and operating processes</li></ul>              | <ul style="list-style-type: none"><li>• Division of responsibilities and binding cooperation</li></ul>  | <ul style="list-style-type: none"><li>• Provide infrastructure</li></ul>                              |
| <b>Value for the users</b>        | <ul style="list-style-type: none"><li>• Evaluation of cooperation with users</li></ul>                                     | <ul style="list-style-type: none"><li>• Establish partnerships</li></ul>  | <ul style="list-style-type: none"><li>• Building of ecosystems</li></ul>                              |

The background of the slide features a complex, abstract network diagram. It consists of numerous small, dark grey circular nodes connected by thin, light grey lines. The nodes are distributed across the slide, with a higher density in the center and bottom right, creating a sense of interconnectedness and data flow. The overall aesthetic is modern and technological.

# **Spatial Data Ecosystems – a New Role for the Public Sector?**

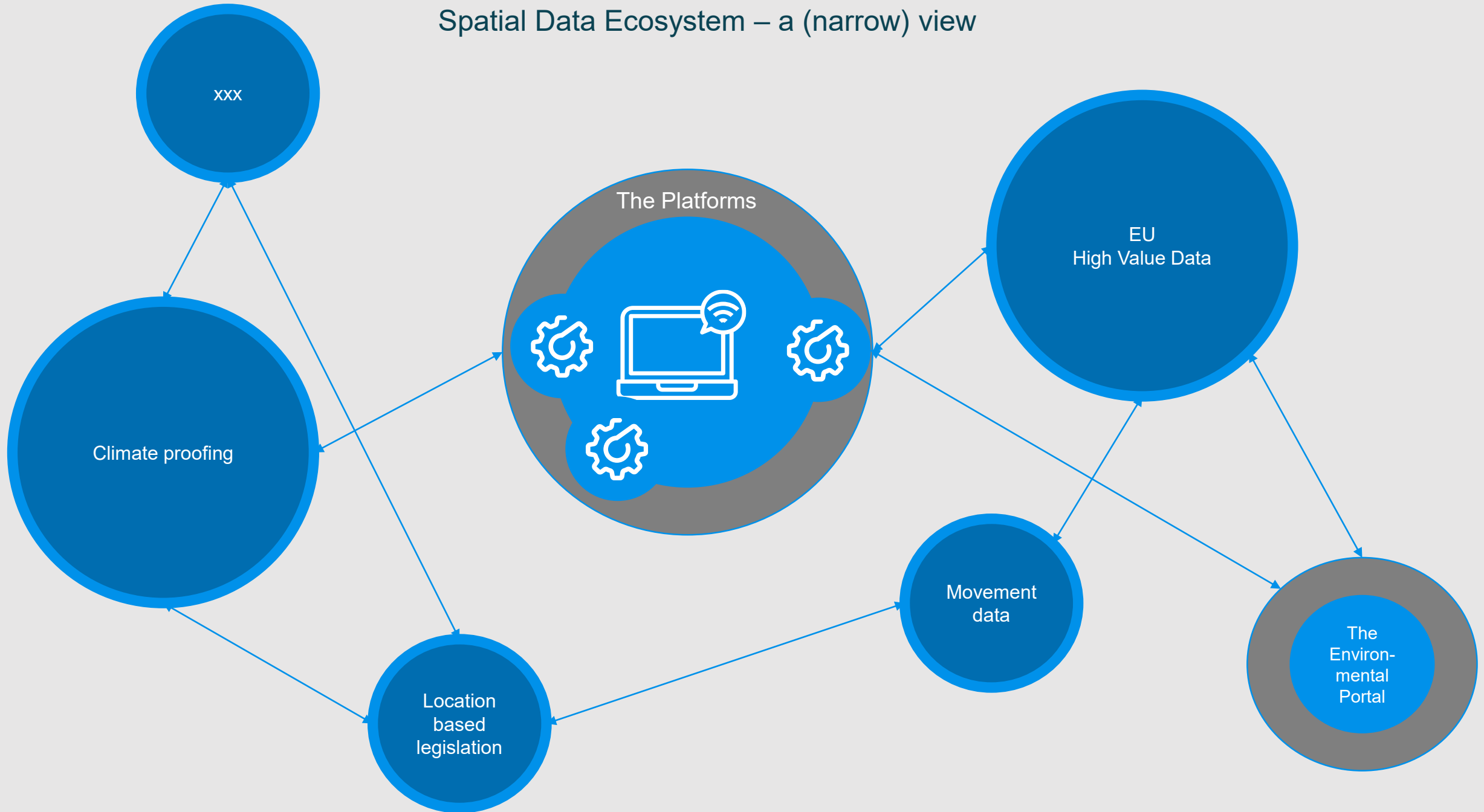


# The transition



Expanding the value proposition.....

## Spatial Data Ecosystem – a (narrow) view





# WHY...?

Complexity calls for collaboration



# Contact

Chief Adviser Peter Knudsen

[peknu@sdfi.dk](mailto:peknu@sdfi.dk)



Agency for Data Supply  
and Infrastructure