



# OME2: Driving Innovation through HVD

**Sallie Payne-Snell**  
Acting Secretary General &  
Executive Director



**Co-funded by  
the European Union**

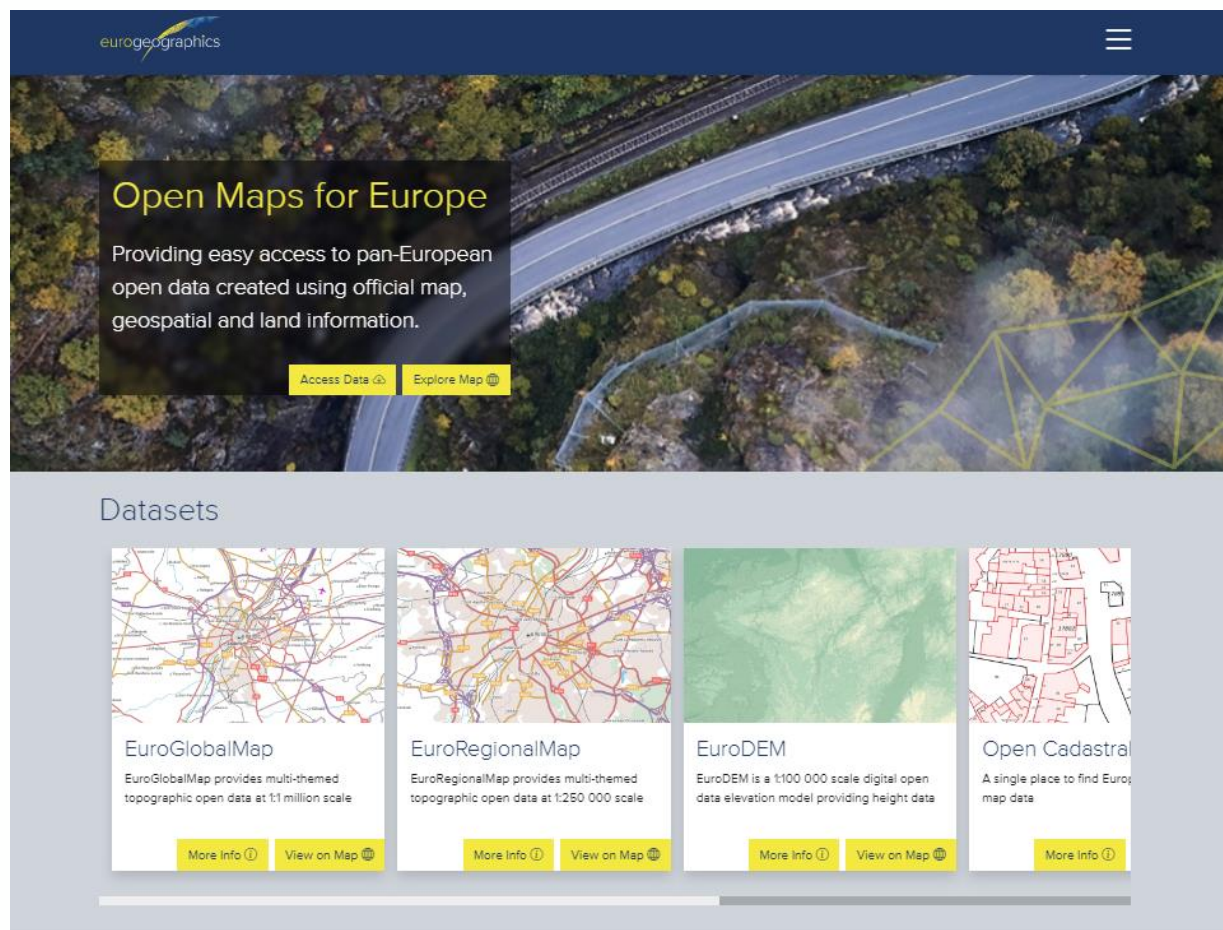
Digital Europe Programme  
Grant Agreement No 101100625





Co-funded by  
the European Union

Digital Europe Programme  
Grant Agreement No 101100625



The screenshot shows the Open Maps for Europe website. At the top, there's a header with the 'eurogeographics' logo and a hamburger menu icon. Below the header is a large hero image of a road winding through a forest. Overlaid on this image is a dark box containing the text 'Open Maps for Europe' and 'Providing easy access to pan-European open data created using official map, geospatial and land information.' Below this text are two buttons: 'Access Data' and 'Explore Map'. Below the hero image is a section titled 'Datasets' which contains four cards: 'EuroGlobalMap', 'EuroRegionalMap', 'EuroDEM', and 'Open Cadastral'. Each card has a map thumbnail, a title, a brief description, and two buttons: 'More Info' and 'View on Map'.

Open Maps for Europe provides free to use maps from more than 40 European countries. The datasets are created using official map, geospatial and land information from official, national sources.

The project is coordinated by EuroGeographics, the not-for-profit membership association for European National Mapping, Cadastral and Land Registration Authorities (NMCAs), in partnership with the National Geographic

The Open Maps for Europe online service is developed by thinkWhere and enables users to discover, view, license and download the open datasets.

The Open Maps For Europe project runs until 31 December 2022 and is co-financed by the Connecting Europe Facility of the European Union.

The contents of this website are the sole responsibility of EuroGeographics and do not necessarily reflect the opinion of the European Union.

Sign up for our newsletter 

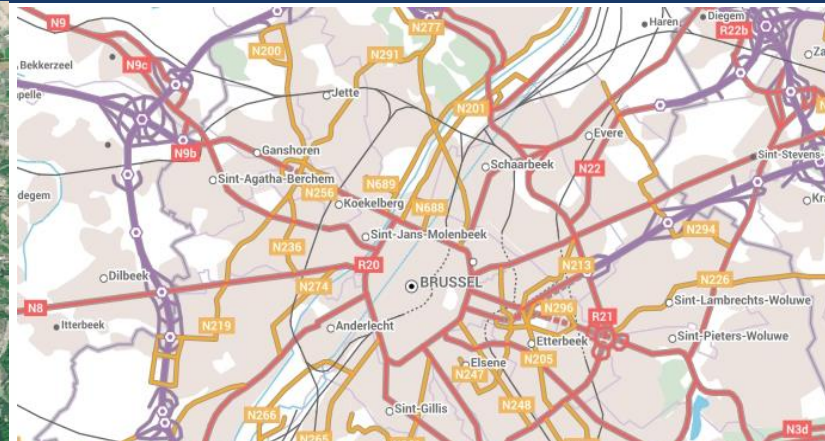
 Co-financed by the European Union  
Connecting Europe Facility



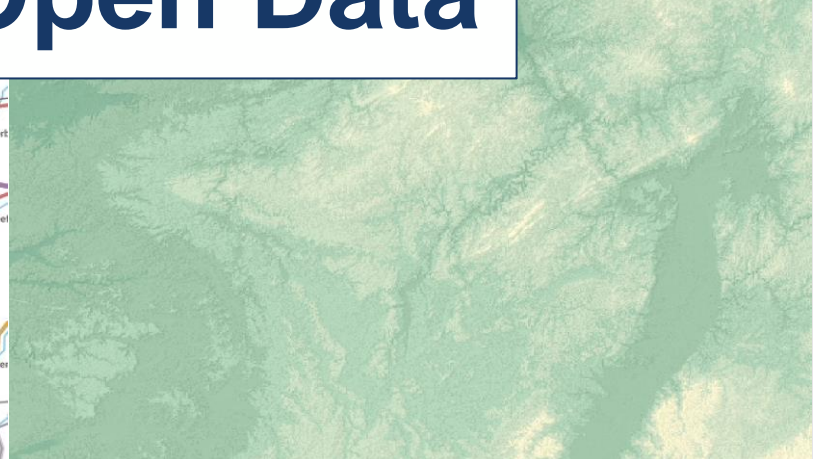
Co-funded by  
the European Union

Digital Europe Programme  
Grant Agreement No 101100625





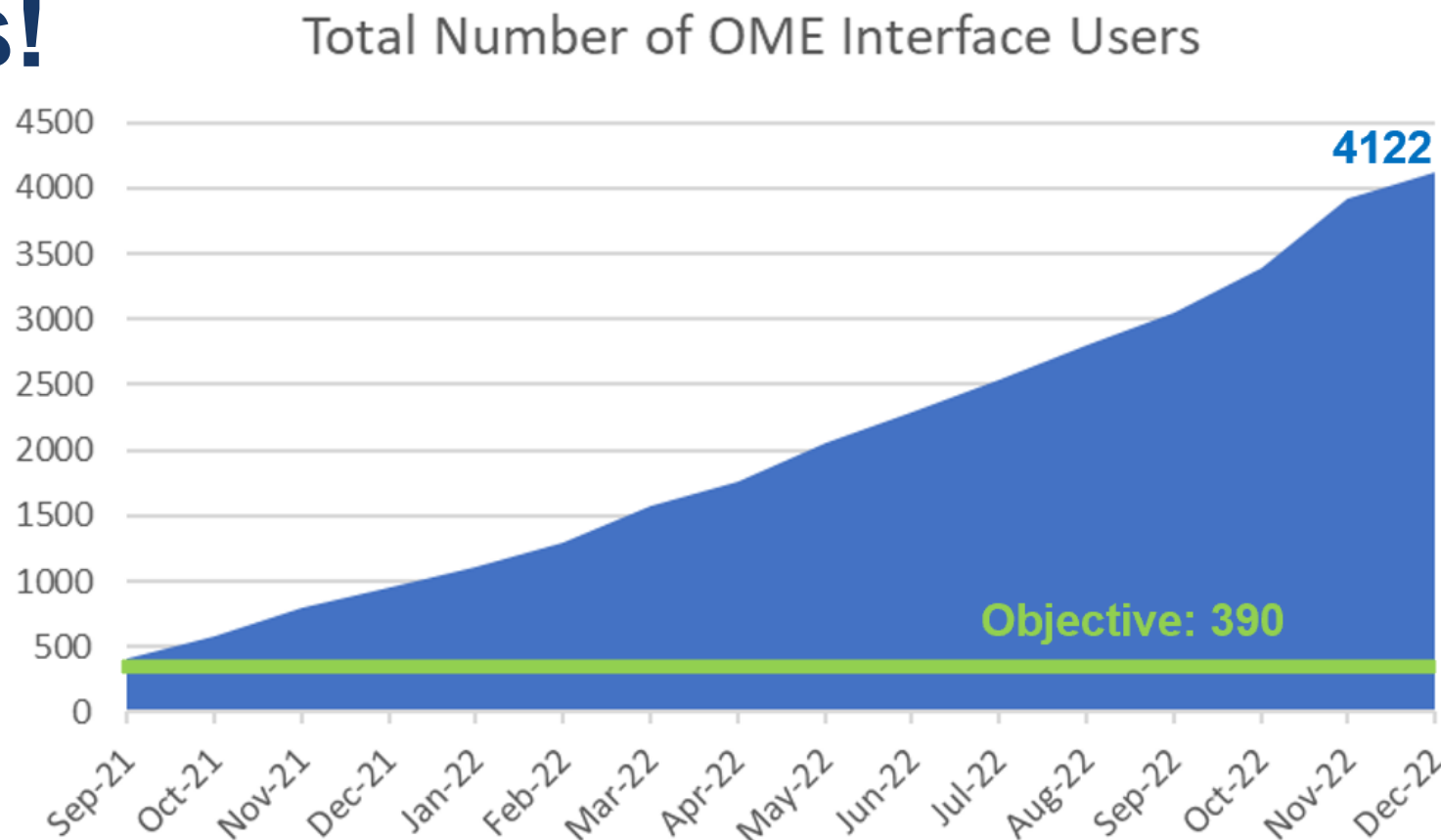
# Providing Easy Access to Open Data



Co-financed by the European Union  
Connecting Europe Facility

# A Great Success!

- > 4000 registered users
- 4700 dataset downloads
- 6 million web service transactions





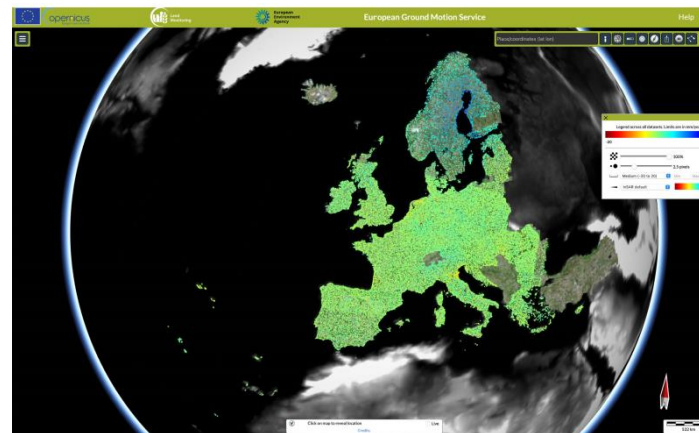
# Case studies

<https://eurogeographics.org/more-than-maps-case-studies/>

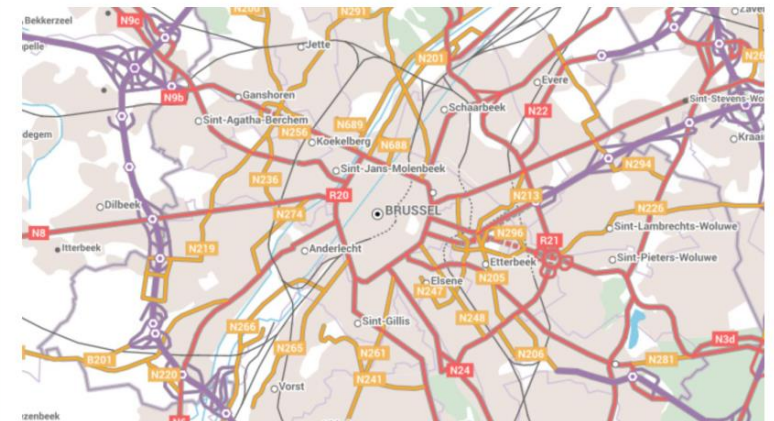


United Nations (UN)

## The European Environment Agency (EEA)



Source: Copernicus Land Monitoring Service. Produced with funding by the European Union.



The European External Action Service (EEAS)



**Co-financed by the European Union**  
Connecting Europe Facility

# User requirements



Large scale



Key Themes



Life-cycle  
management



Harmonised &  
edge-matched



Authoritative

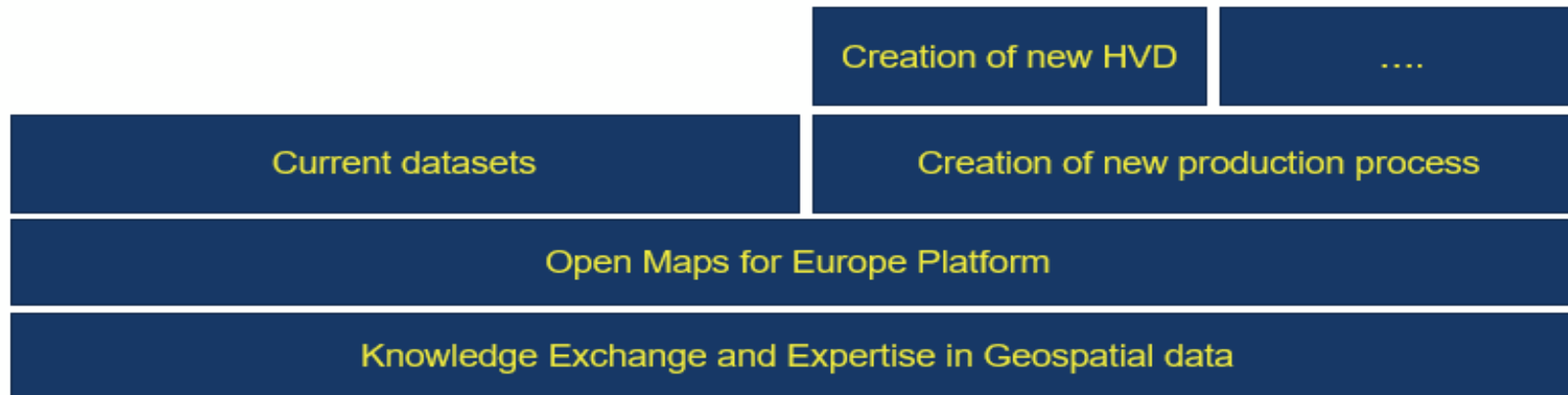


Geographical  
Europe  
coverage



# Data Strategy

- Data Access strategy is to **facilitate access to our members data**
- Make our member data used and re-use, and at forefront of GI discussion for policy makers
- Meeting User Requirements



Co-funded by  
the European Union



# From OME to OME2



Co-funded by  
the European Union

Digital Europe Programme  
Grant Agreement No 101100625

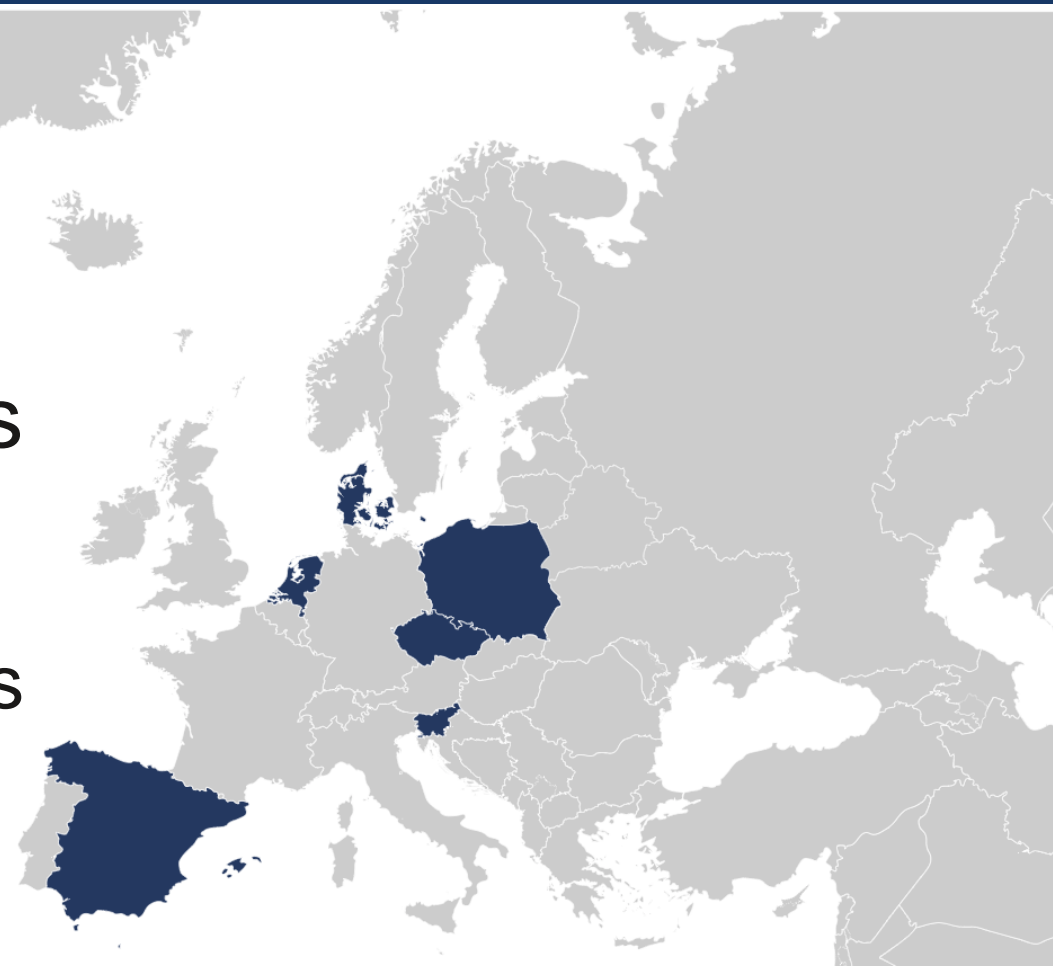
# The Open Cadastral Map

**HVD:** Cadastral Parcels, Buildings, Addresses and Administrative Units

**Sustain:** Currently data from 6 countries provided through the OME interface

**Extend:** 9 additional countries

**Enhance:** New functionalities



Czech Republic  
Denmark  
Netherlands

Poland  
Slovenia  
Spain



Building: Parcel summary No. 1

Data source: Tensorflight data Tax assessor data

Estimated replacement cost:

\$9,573,000

Estimated replacement cost per ft<sup>2</sup>:

\$174

Replacement cost currency:

USD

Footprint area (ft<sup>2</sup>):

18,390

Construction Type:

WOOD FRAME

Building occupancy type:

MULTI FAMILY

Facade material:

WOOD

Gross floor area (ft<sup>2</sup>):

55,171

Estimated floor area (ft<sup>2</sup>):

42,604

Quality Of Finishes:

AVERAGE

Estimated replacement from 3d combined - PLN:

\$9,573,000

Estimated replacement from volume [PLN]:

-

Estimated replacement value PLN per ft<sup>2</sup>:

-

Building volume ft<sup>3</sup>:

-

General Overview

Number of buildings on the parcel:

3

Year built:

2008



General

11/2021



Ground view



Defensible space



Measure



Link to G. Maps



Share

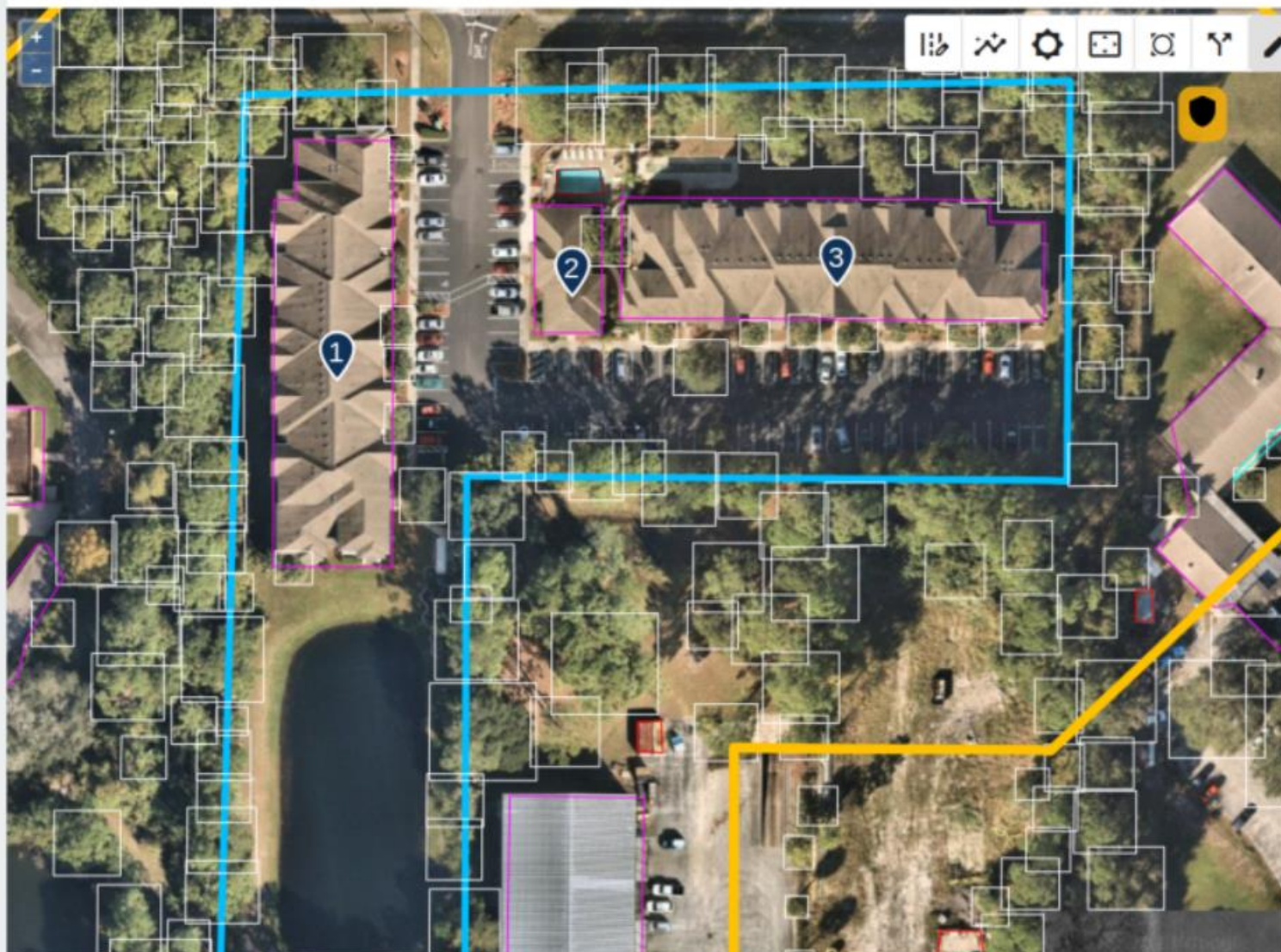


Contact support

Address:

850 N Clyde Morris Blvd, Daytona Beach, Florida 32117, United States

Client name:





[Analytics](#) ▼[Products](#) ▼[Practices](#) ▼[Gallagher Research Centre](#)[Insights](#)[Search](#)

## Welcome to Gallagher Re

A full-service global reinsurance firm revitalizing the industry, redefining innovation, and reimagining what's possible.



 [Contact Sales](#) [Customer Support](#)[PREMIUM OSINT SERVICES](#)[ONLINE ACADEMY](#)[STUDENT SIGN-IN](#)[INSTRUCTOR LEAD CLASSES](#)[CYBER INTELLIGENCE DASHBOARD](#)[ABOUT US](#)

ECHO ANALYTICS GROUP

## Your Open-Source Intelligence Experts

Our team of intelligence professionals have 200+ years collectively in the government, law enforcement and commercial sectors.

[ABOUT US](#)

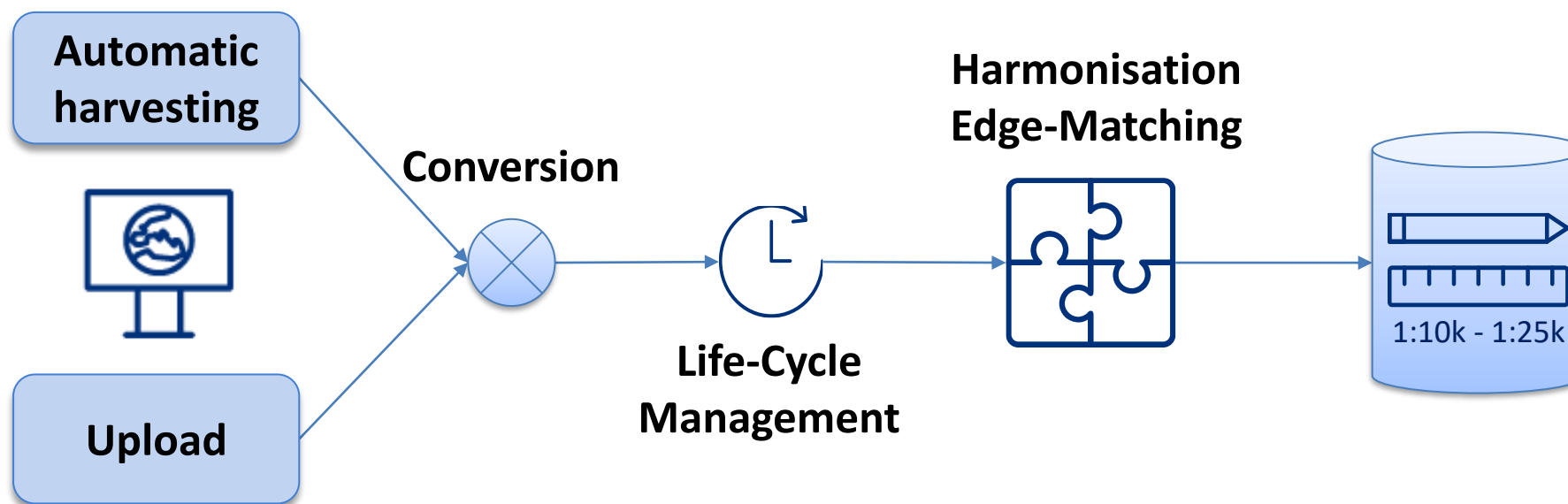
### ABOUT ECHO ANALYTICS GROUP

**We are an open-source intelligence research and analysis company providing unmatched OSINT services, education and technology.**

#### — What is OSINT?

Open-Source Intelligence (OSINT) is intelligence produced from publicly available information (PAI) that is collected, exploited and disseminated in a timely manner to an appropriate audience for the purpose of addressing specific intelligence requirements.

# New production process



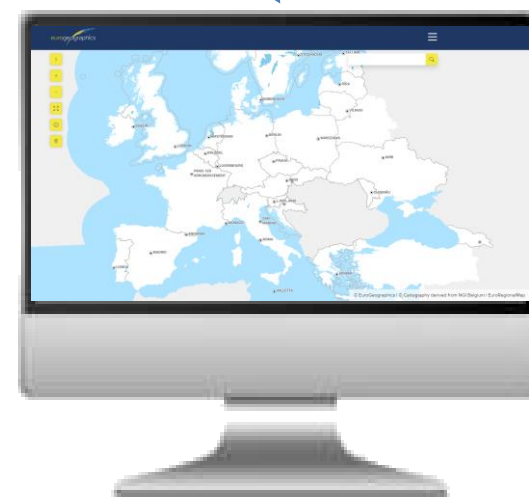


# Prototype

10 countries 3 themes

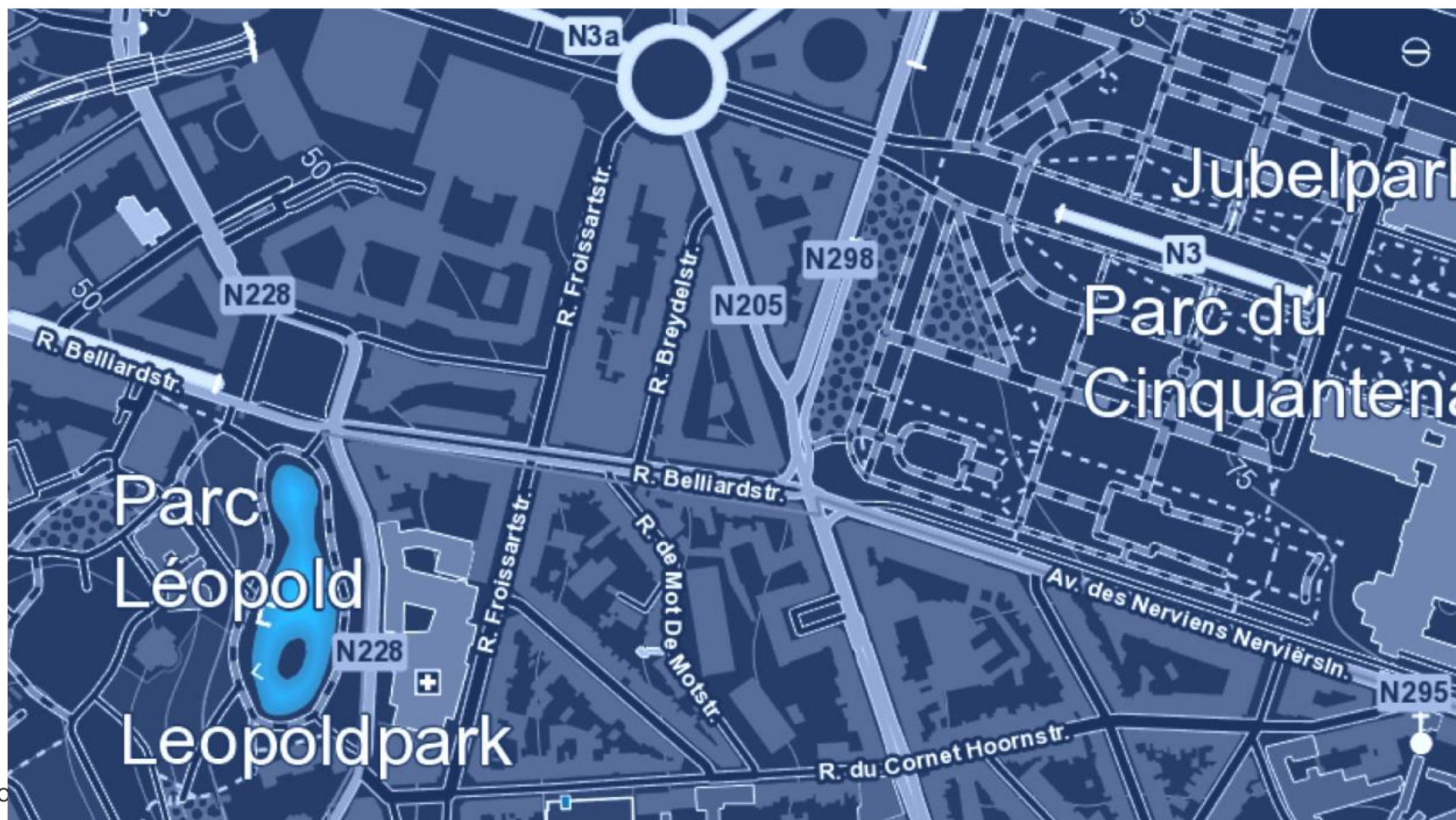


- Administrative Boundaries
- Transport Networks
- Hydrography



OME Interface

# Driving Innovation through HVD



Co-funded by  
the European Union

Digital Europe Programme  
Grant Agreement No 101100625