

# UNIFORM AND SHARED GEO INFORMATION FOR EMERGENCY SERVICES

**Rink W. Kruk**  
**Strategy Department**

**NGI**  
Nationaal  
Geografisch  
Instituut

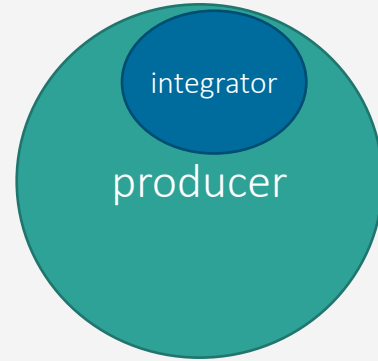
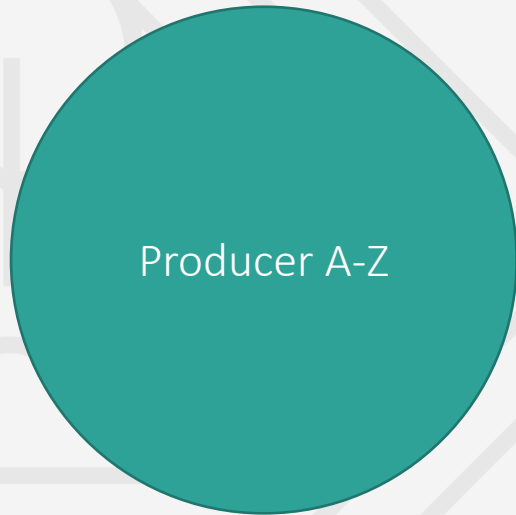


**IGN**  
Institut  
Géographique  
National

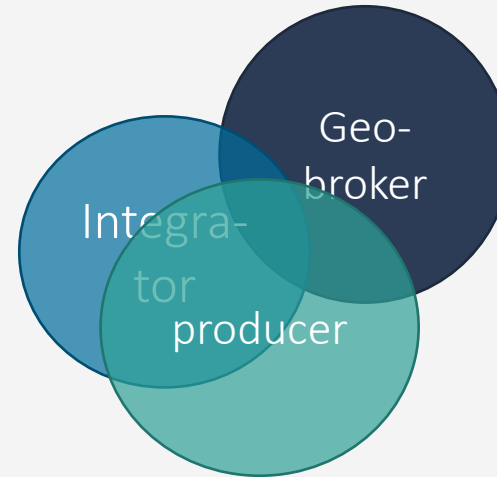


Uniform and Shared Geo Information for Emergency services

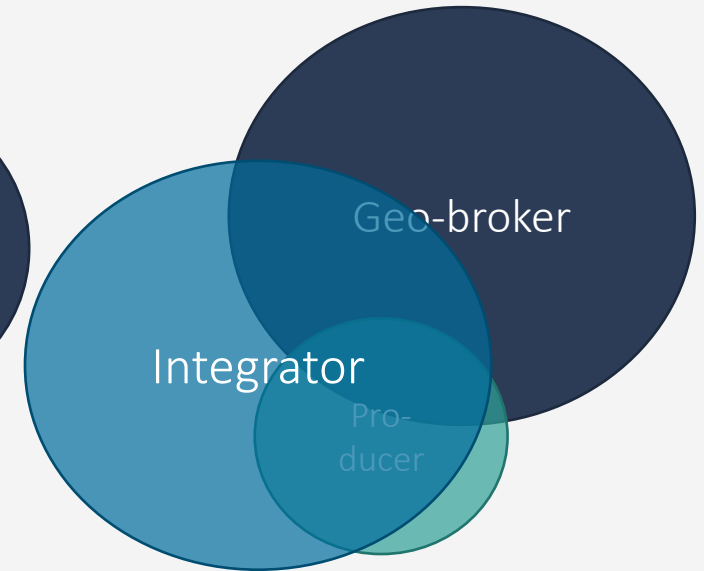
## Changing role of National Mapping Agency



ITGI



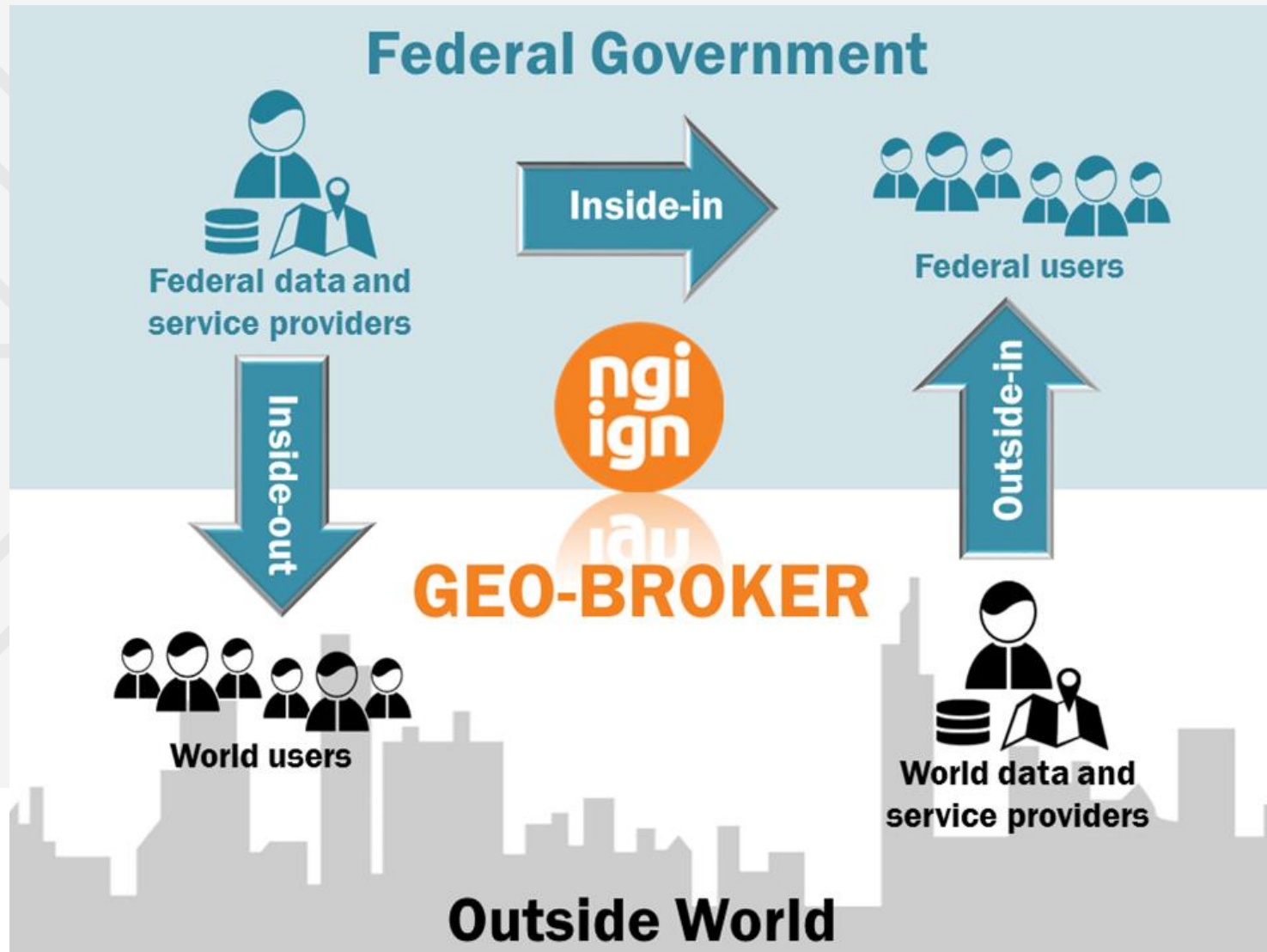
Strategy 2020



Vision 2030

Uniform and Shared Geo Information for Emergency services

## Geo-broker







## Fighting the enemy off the map

Geographical products and services in Belgium and abroad  
Centre of Expertise









**DEFENSIE  
LA DÉFENSE**



**Wallonie**  
environnement  
SPW

AGENTSCHAP  
NATUUR & BOS



**Vlaanderen**  
is natuur

# Politie Police



**NGI**  
Nationaal  
Geografisch  
Instituut



**IGN**  
Institut  
Géographique  
National



PROVINCIES - PROVINCES  
**GOUVERNEURS**

**ibz**  **Intérieur  
Binnenlandse Zaken**



**astrid**

service public fédéral  
**SANTÉ PUBLIQUE,  
SECURITE DE LA CHAÎNE ALIMENTAIRE  
ET ENVIRONNEMENT**



federale overheidsdienst  
**VOLKSGEZONDHEID,  
VEILIGHEID VAN DE VOEDSELKETEN  
EN LEEFMILIEU**





Leekbroek

LANGVELD

GEETBETS

t Broek



# N Dispatch – Police





# GPS Police Van



MEDIA

PHONE

VOICE

Nw. reisdoel: op kaart

Opties



Kerkplaats

Gemeentebos

Rerum N

50m



Breedtegraad

51

°

21

'

28.8

" N



Lengtegraad

4

°

32

'

27.3

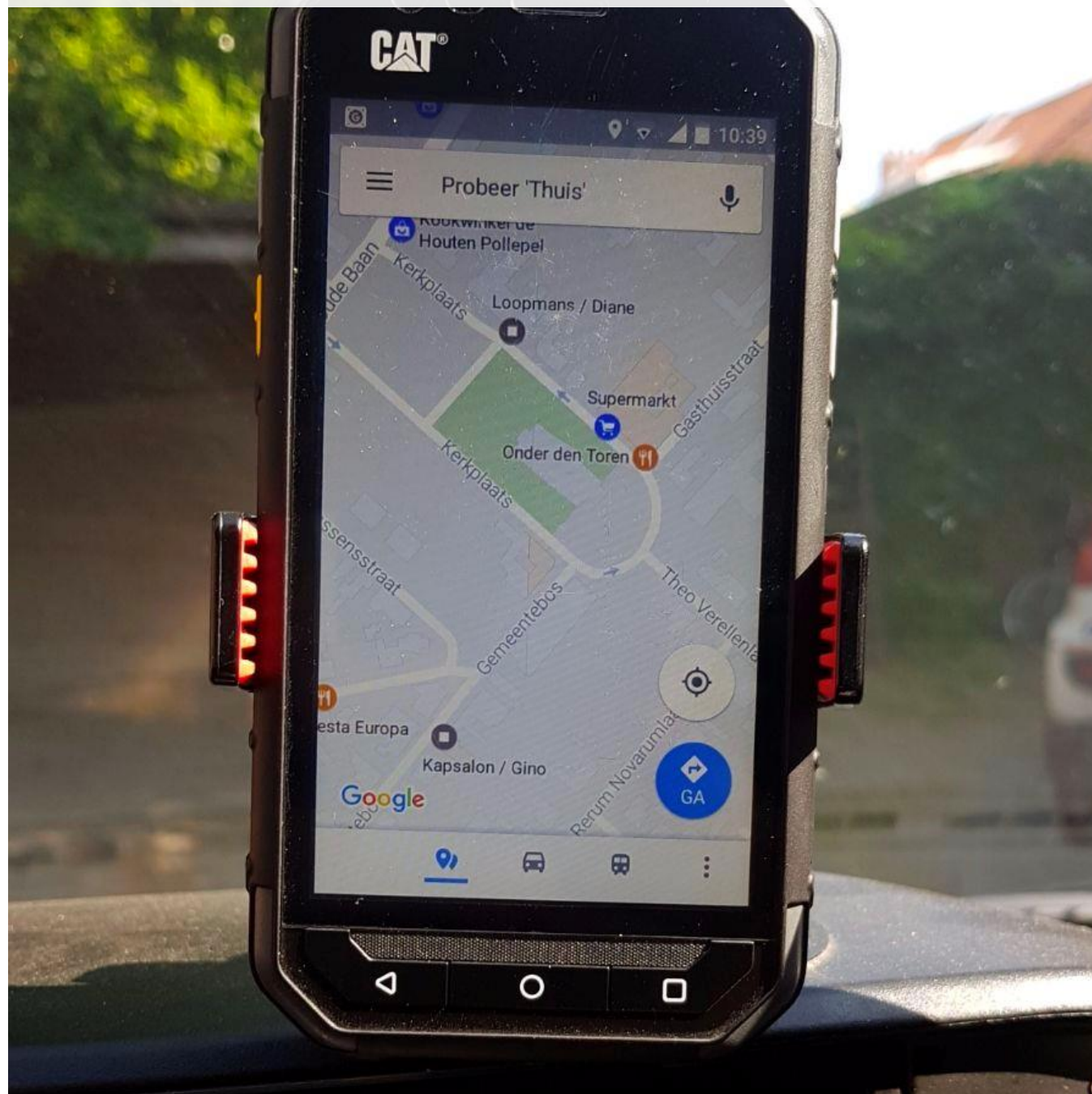
" O

Wuustwezel, Kerkplaats 19

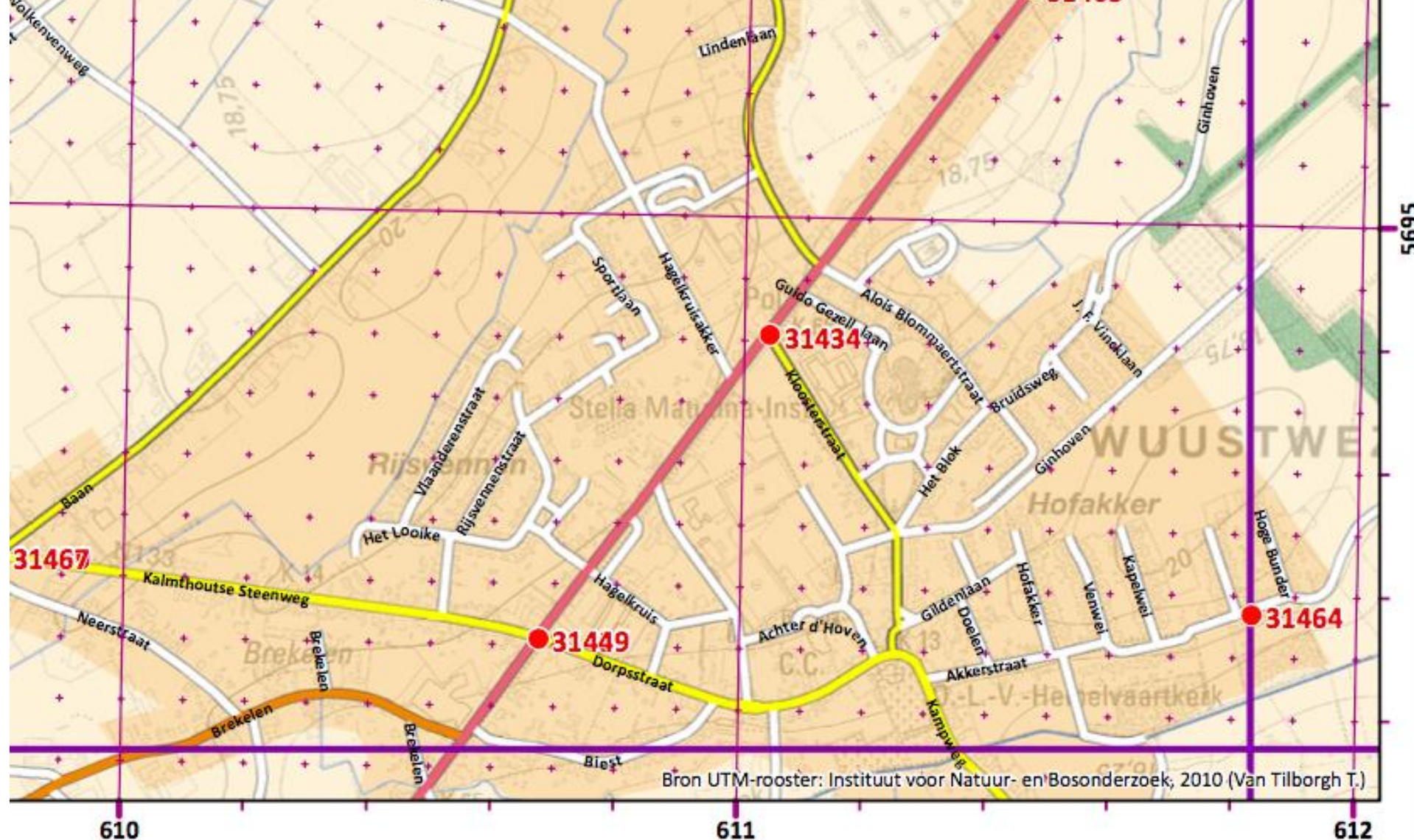
OK



# And... another Police Van







**Meetpunten brandweer**  
**GRIDNR : 2092**

09-03-10

2043	2093	2143
2042	2092	2142





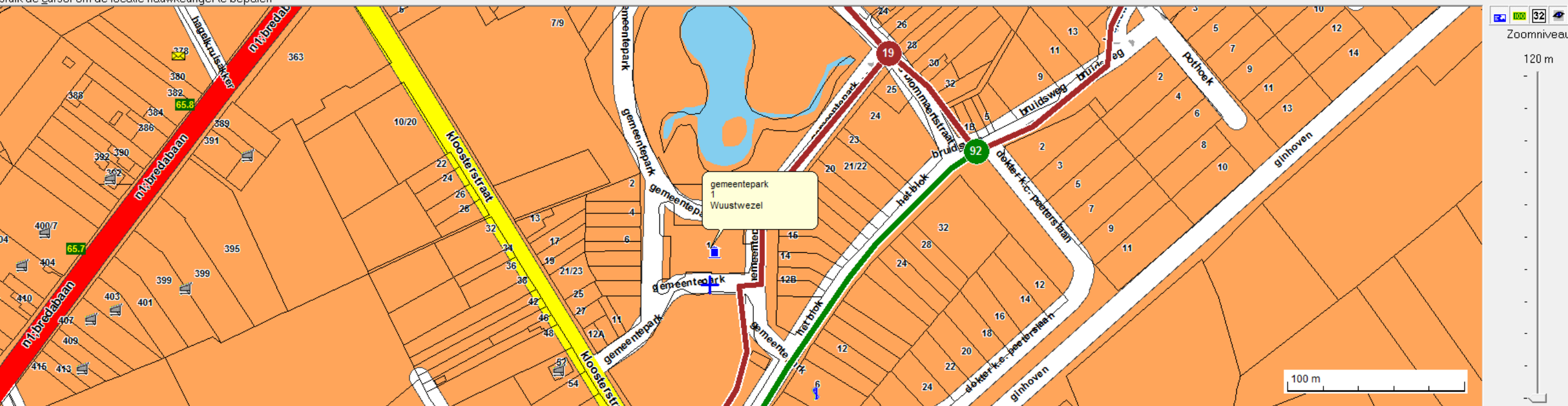
Geef een straat of locatie

Op gedeelte van de plaats- en/of straatnaam

Plaatsnaam/Locatiernaam	gemeentepark	Gemeente (Plaats)	wuust
Nummer	1	Merkpunt naam	
Zoek vanaf begin van naam	<input checked="" type="radio"/> Zoek <u>m</u> idden in naam	Zoek merkpunt in	
Straatnaam/Locatiernaam		Gemeente	
gemeentepark		2990 Wuustwezel (Wuustwezel)	

HC 112/100

Gebruik de cursor om de locatie nauwkeuriger te bepalen



selecteerde locatie

Lambert X	166035	Lambert Y	231376
Longitude	4.59914353931108	Latitude	51.3918822509472

Volg in GIS

OK

Toon in GIS

Cancel



POTUS from airport to embassy

Where to dispatch for fire?

Supicious package found

Does it impact itinirary Merkel?

Where is LEADER1?

Where are which ambulances?

Who can quickly react there?

We have drawn the perimeters

Can the police evacuate the area?

Which ambulance?



# IN THE FIELD

Paper

Smartphone

Tablet

Dispatch

CP-Ops (Command post Operations)







Uniform and Shared Geo Information for Emergency services

## Uniform Cartography for Wildfires from POC to Robust tools (online&paper)





# Geo-enabling Incident- & Crisismanagement

## Components

- Authentic source CartoWeb.be
- Emergency Index Grid 1.0
- Thematic data on top
- Digital Platform
- Paper maps & atlases

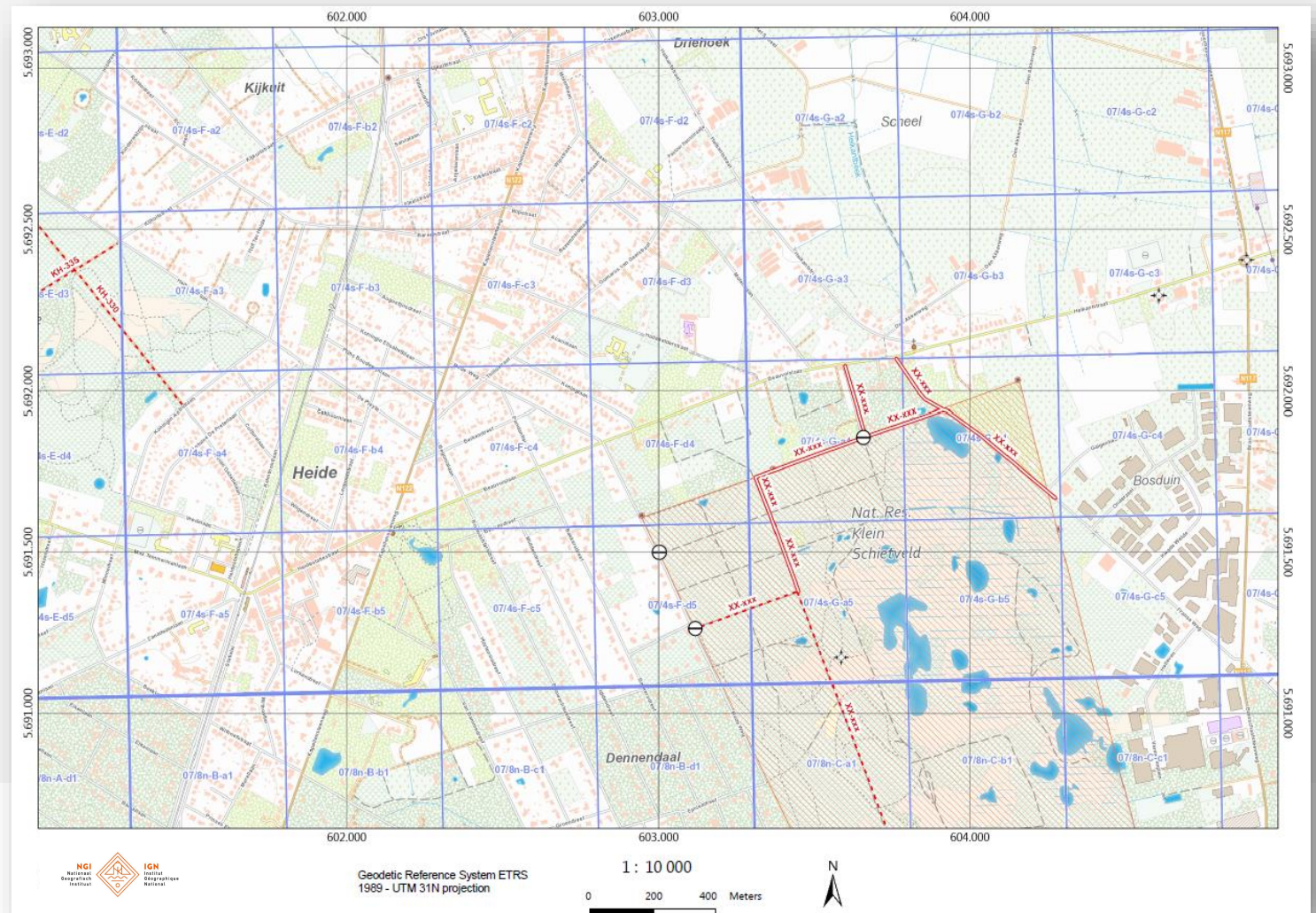
### Bereikbaarheid



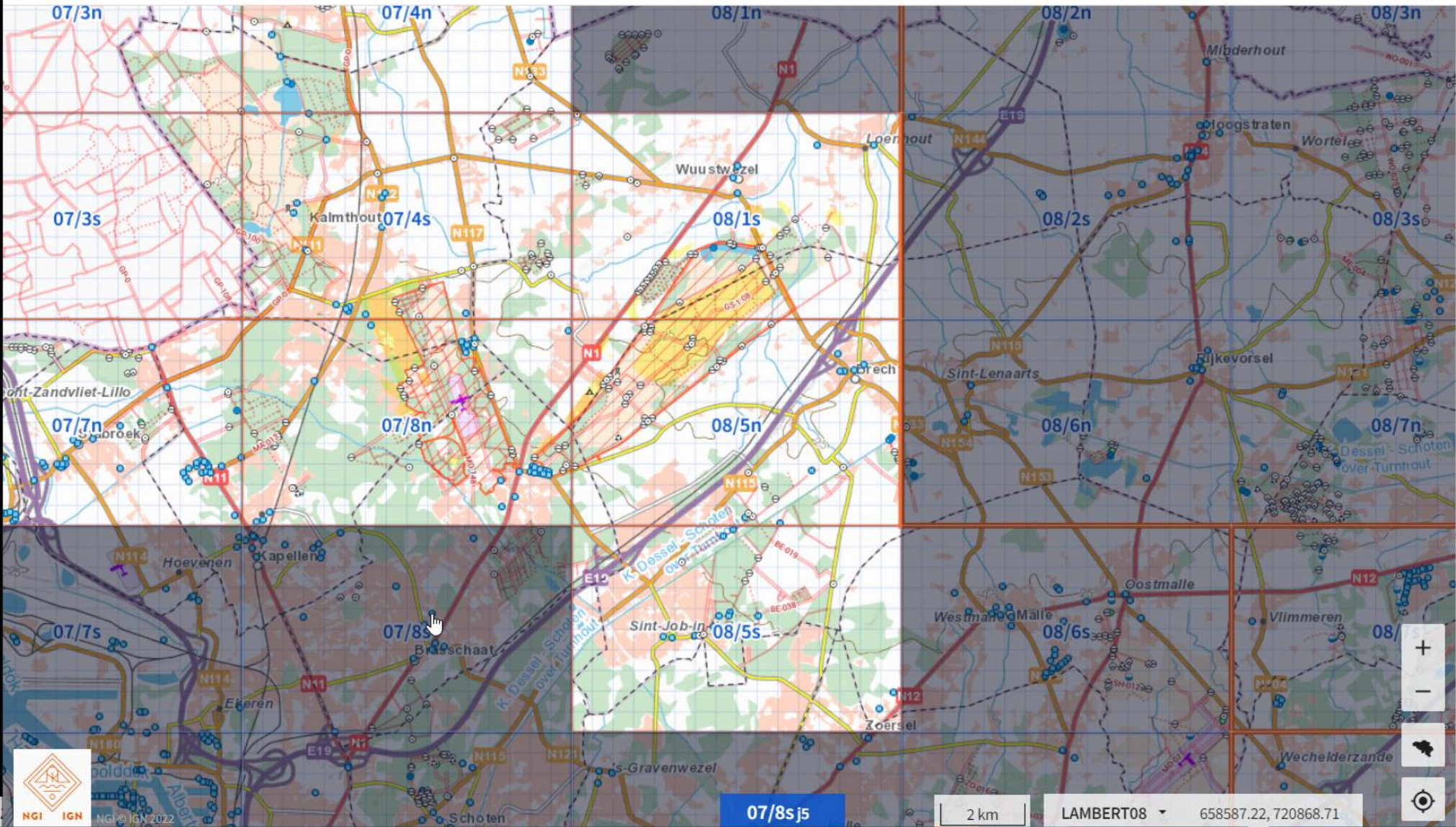
### Risico



### Waterwinning







CREATE MAPS

Atlases

Area maps

Click on the map to select the map sheets with which you want to compose the atlas. Click again to deselect. Have you added the desired map sheets, title and description? Click 'Create atlas'.

Mapleaves

- 07/4s x 07/3s x 07/8n x
- 07/7n x 08/1s x 07/4n x
- 07/3n x 08/5n x 08/5s x

Click on the map to select mapleaves.

Fill in title

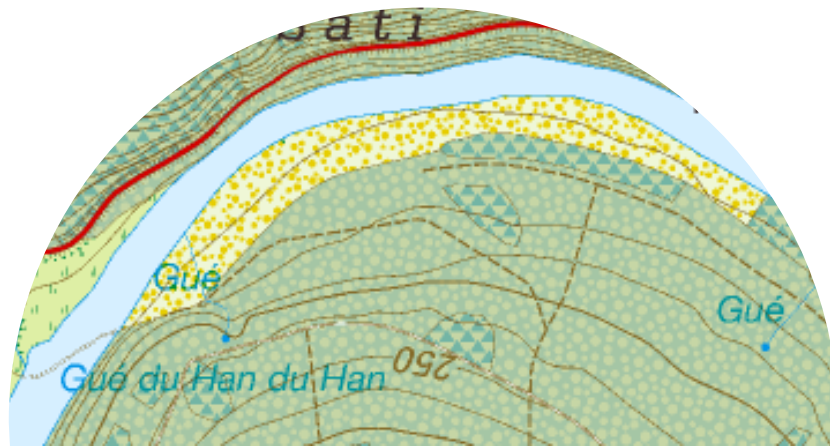
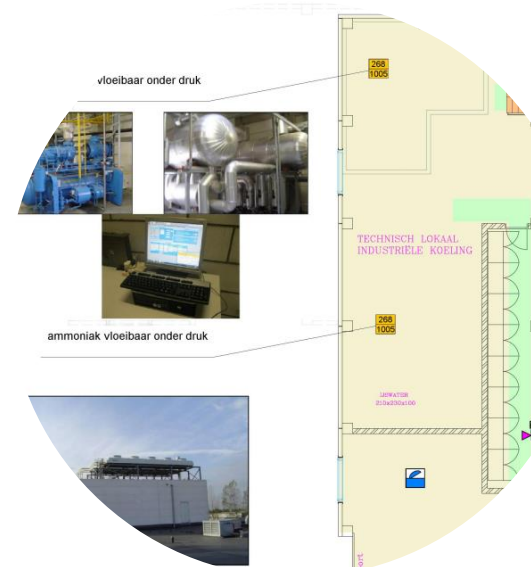
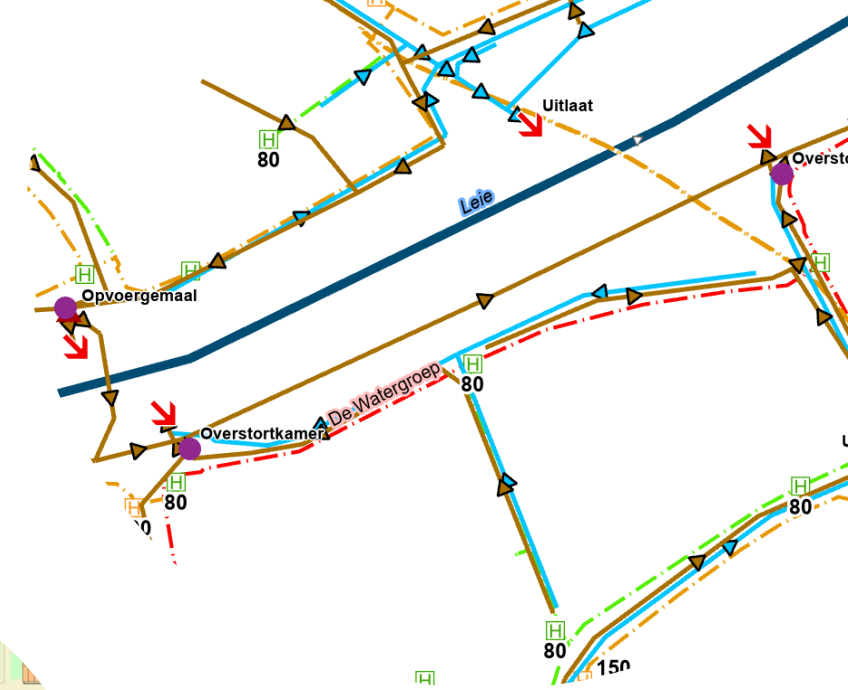
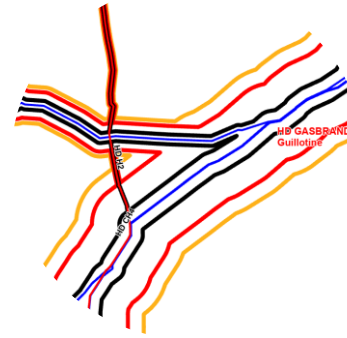
Fill in the description

+ CREATE ATLAS



## Uniform symbology & spec's

- Utilities
- Hydrants
- Hazard perimeters
- Flow direction of sewers
- Companies
- Hazards (Seveso)
- Evacuations (Schools)
- Contacts of companies
- Natural environment





# GeoHub for Emergency services and the NGI

NGI makes its GeoHub available for Civil Security.

- Centralising all geodata for civil security via NGI's GeoHub is a request by the emergency services request to all data owners (e.g. water, gas, electricity, ...)
- Equal and up-to-date data for all emergency response agencies.

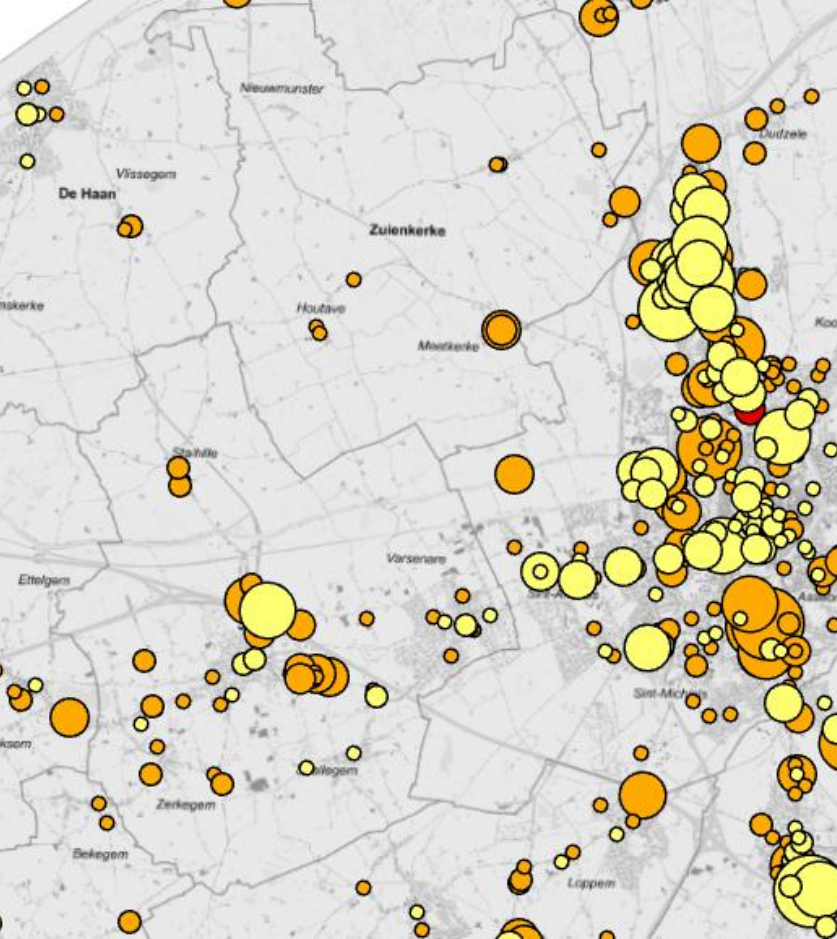
Sources and data

- Contact details to sources (not all partners have digital data, API, export possibilities)
- Time- and energy-saving for aid agencies and external partners.

All data is distributed according to discipline and role.







# RISK ANALYSIS

Companies by risk class and numbers of employee

The data is already existing, but not used yet!



*Uranium processing with 3 employees*

*vs.*

*Law firm with 1,000 employees*





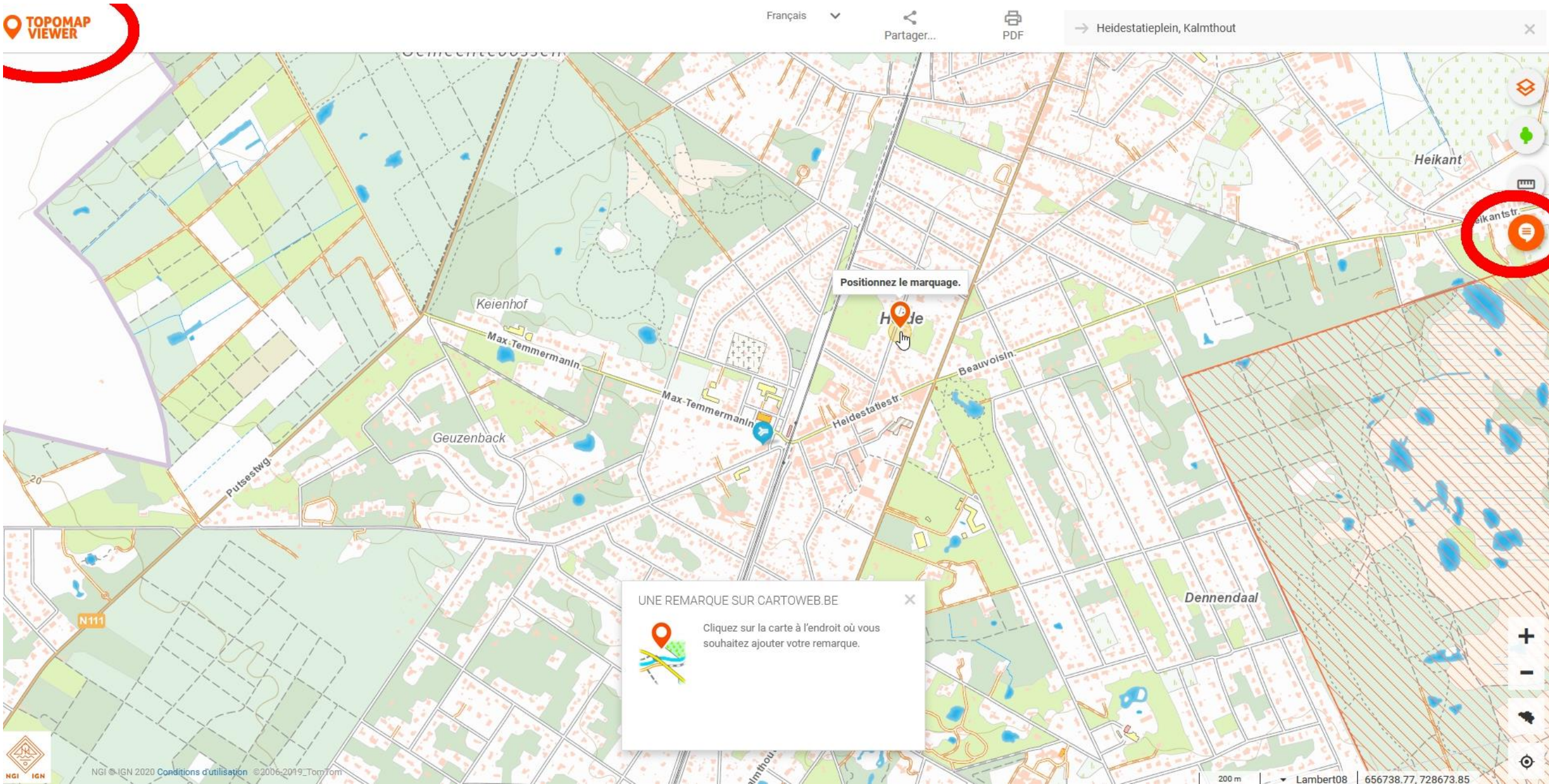
Uniform and Shared Geo Information for Emergency services

## Geo-enabling Incident- & Crisismanagement

- Geo-enabled National Crisis Centre  
Firefighters, Police, ....  
(improved way of spatial thinking & solutions)
- Emergency services ask us to help to make thematic data **Uniform and Shared**
- Stakeholder committee Emergency Services







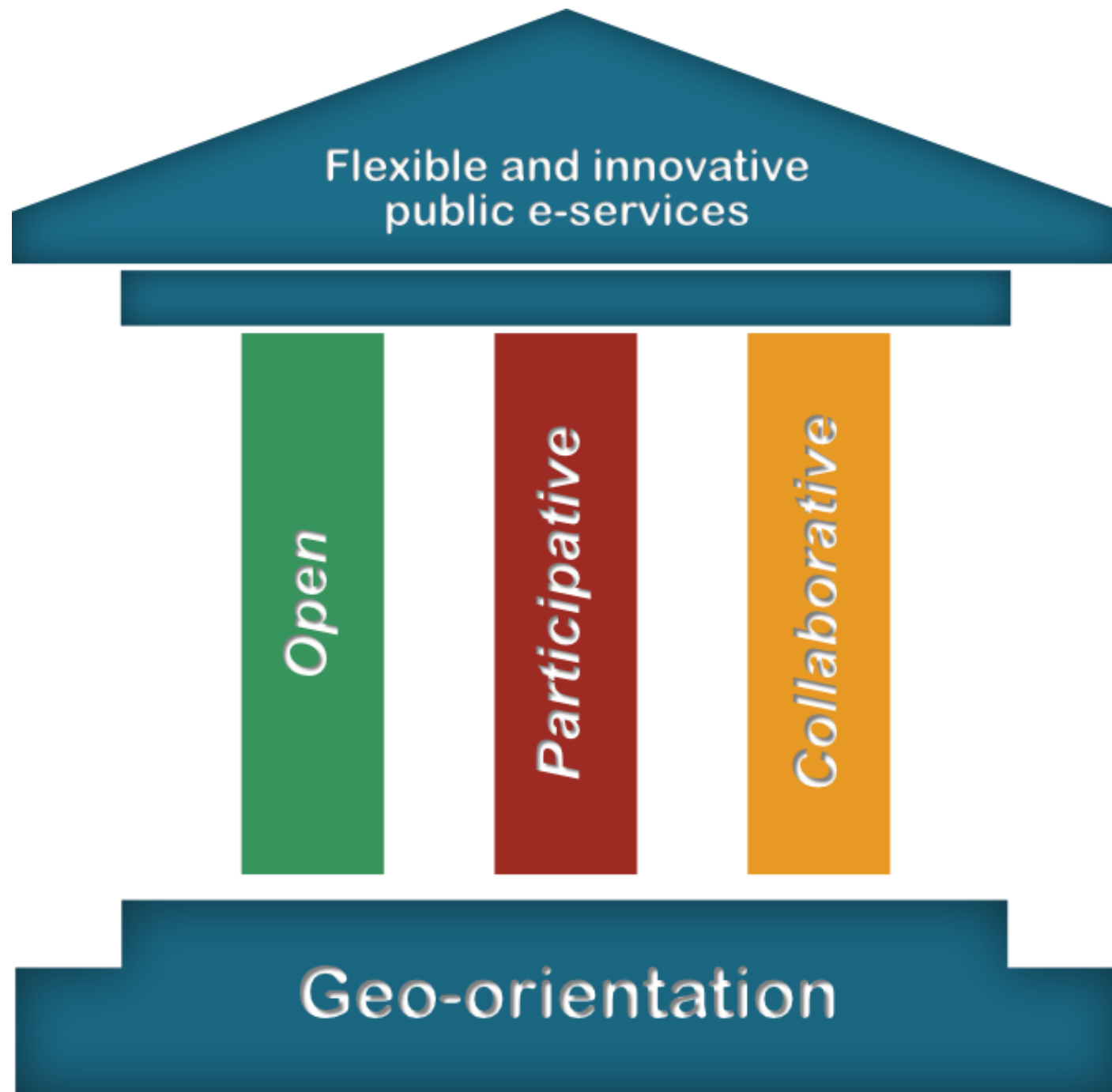
Any remark on the map CartoWeb.be [topomapviewer.ngi.be](https://topomapviewer.ngi.be)

Step 1. Verification Step 2. Update in the next release (every two months)









[Belgian Strategic  
Governance research  
deliverables](#)  
[www.flexpub.be](http://www.flexpub.be)



# Geodata as a public utility



[rink.kruk@ngi.be](mailto:rink.kruk@ngi.be)