

The background of the slide is an aerial photograph of a dark blue lake surrounded by a dense forest with trees in various shades of green, yellow, and orange, indicating autumn. In the top right corner, there is a white geometric pattern consisting of interconnected triangles.

Technical issues concerning EG products and news in PMS

Jörgen Spradau, Regine Elling
and Alexander Reichelt, BKG

EG Producer Meeting, Ljubljana, 24th / 25th September 2019

Agenda

Consequences of no Eurostat contract with ERM

Update ERM Technical Guide

Modelling of ferries

Modelling of GNameT / GNameL

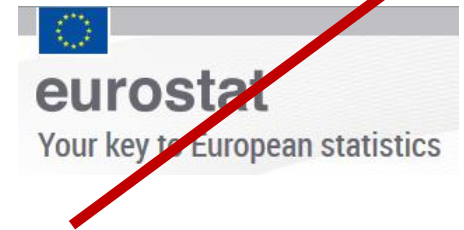
Handling of missing attribute values

Language codes

Poll

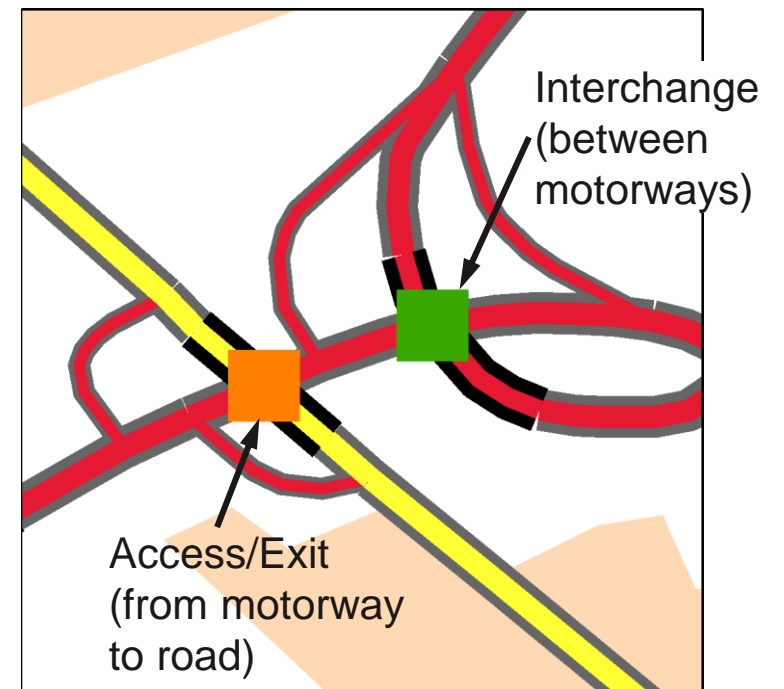
Consequences of no Eurostat contract with ERM

- Since 2019 no contract with Eurostat for EuroRegionalMap any more
→ Possibility to simplify and harmonise data model
- Consequences:
 - Theme POI will not be produced / updated any more
→ PMT will remove it from Specification and Technical Guide
 - Attributes TEN and TENTEC-ID will be kept
→ Question: Do Data Producers have information about TEN and TENTEC-ID from infrastructure managers in their country?
→ DG-MOVE will be asked to update the ID
 - Plan to remove MDC and LAKERES_WBSC
→ EuroGeographics will inform other users and ask if they don't need it



Update ERM Technical Guide

- Usage of IntercC (AP020)
 - Traffic access from one road to another
→ Portrayed as single connected node
 - Conditions
 1. Interchange between motorways (primary roads serving as motorways) and access/exit from motorways to roads
 2. Roads are intersecting at different levels and connected by ramps
→ Exception:
Connection of a beginning/ending motorway with another road

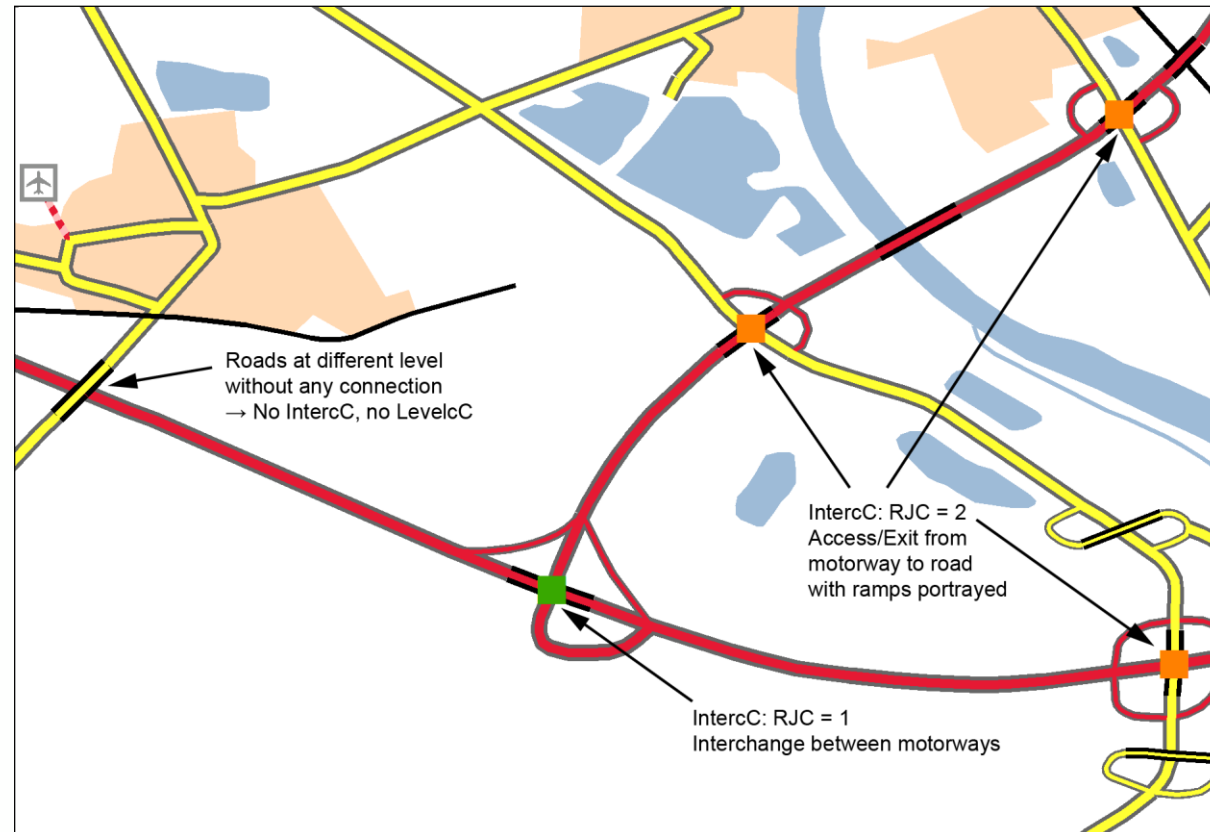
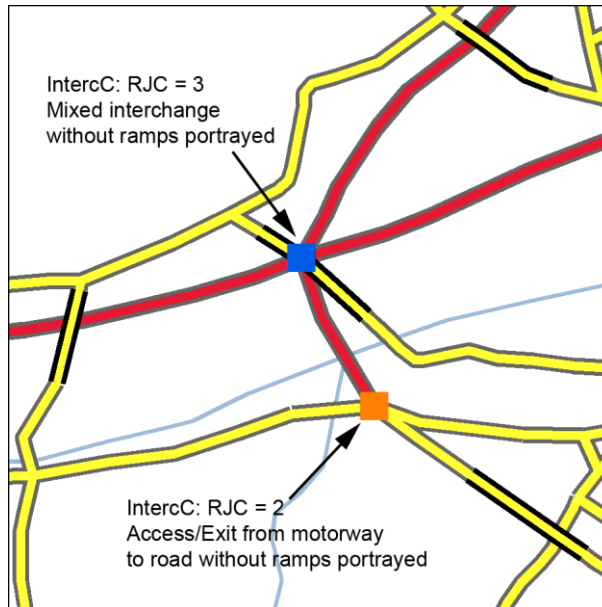


Update ERM Technical Guide

■ Usage of IntercC (AP020)

IntercC

- Interchange (between motorways)
- Access/Exit (from motorway to road)
- Mixed interchange



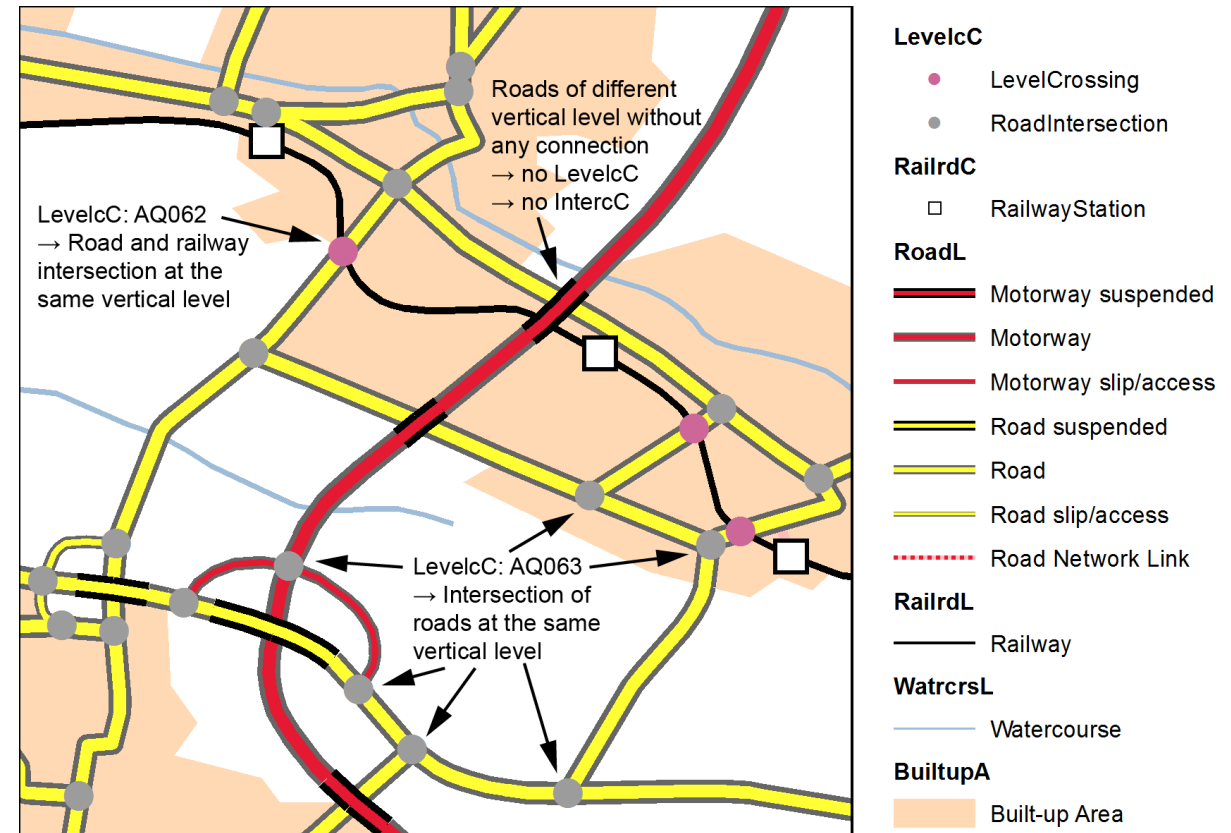
- AirfldP/AirfldC**
- ✈ Airport/Airfield
- RoadL**
- Motorway suspended
 - Motorway
 - Motorway slip/access
 - Road suspended
 - Road
 - Road slip/access suspended
 - Road slip/access
 - Road Network Link
- RailrdL**
- Railway
- WatcrsL**
- Watercourse
- WatcrsA, LakeresA**
- Watercourse
 - Lake/Pond
- BuiltupA**
- Built-up Area

Update ERM Technical Guide

■ Usage of LevelcC (AQ062 LevelCrossing and AQ063 RoadIntersection)

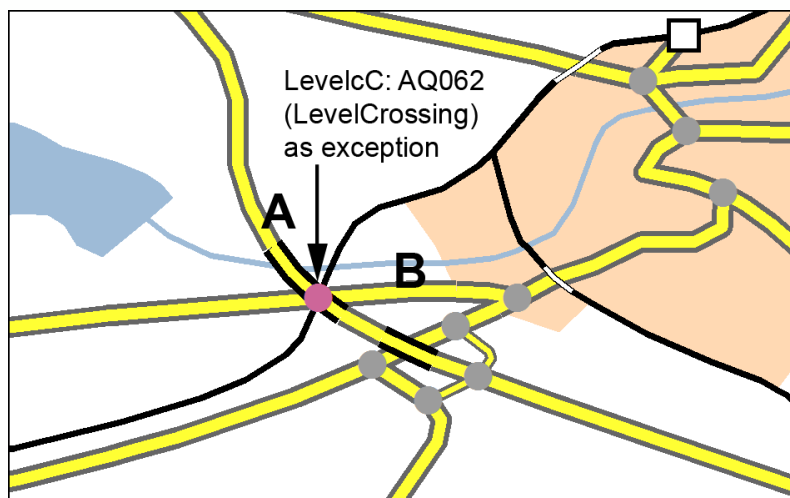
→ Portrayed as single connected node

- Level crossing:
Crossing point of a road and a railway located at the same vertical level
- Road intersection:
Crossing point of roads crossing at the same vertical level

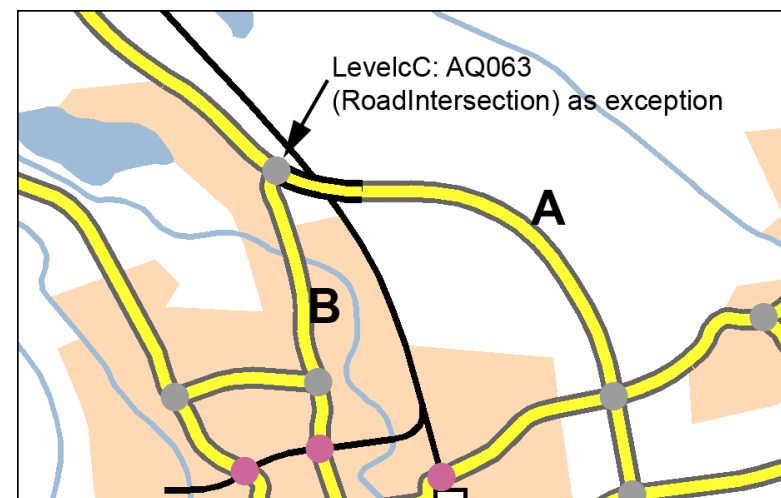


Update ERM Technical Guide

- Usage of LevelcC (AQ062 LevelCrossing and AQ063 RoadIntersection): Exceptions



In nature, under the bridge of a road (A) there is a level crossing of a railroad and another road (B). A level crossing (LevelcC, AQ062) has to be placed at the intersection and declared as exception.



In nature, the bridge of road A ends before the road reaches road B. Due to generalisation the bridge ends at the intersection of the roads in the data. A road intersection (LevelcC, AQ063) has to be placed at the intersection and declared as exception.

Update ERM Technical Guide

- Transnational watercourse features
= Line or polygon watercourses (WatcrsL, WatcrsA LakeresA) that crosses the International Boundary
- Creation of HYDRO-ID with centralized ID service in the Production Management System to avoid duplication:
 - Features which cross countries within one ERM region: Regional Coordinator
 - Features which cross ERM regions: Production Management Team at BKG
 - Namespace of these features starts with “E.EG.”
- Transnational watercourse features which are not attributed as such at the moment: Please attribute them and start with watercourses that have a name



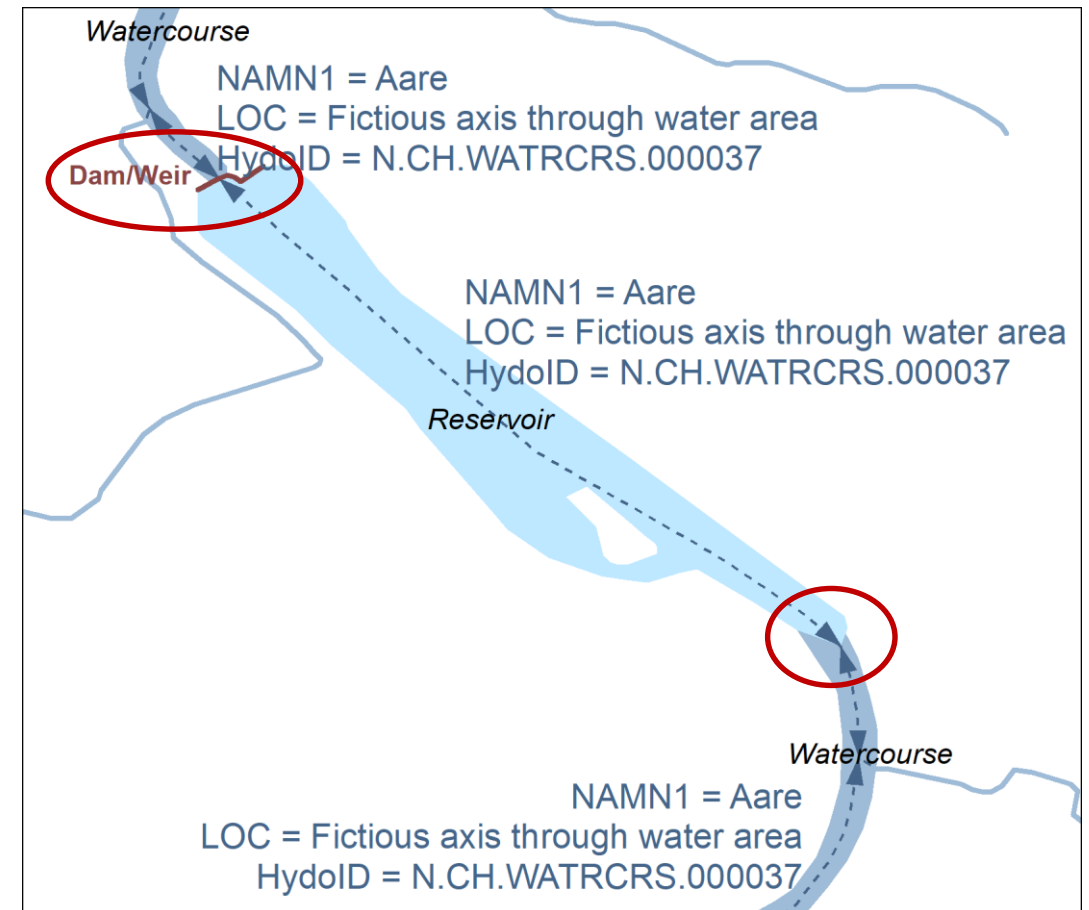
EBM, ERM and EGM Production Management System

ID-Generator. centrally organized and generated unique ID's

Thematic or Inspire	<input type="text" value="Thematic"/>
Country (choose EG for european tasks):	<input type="text" value="EG"/>
Product:	<input type="text" value="ERM"/>

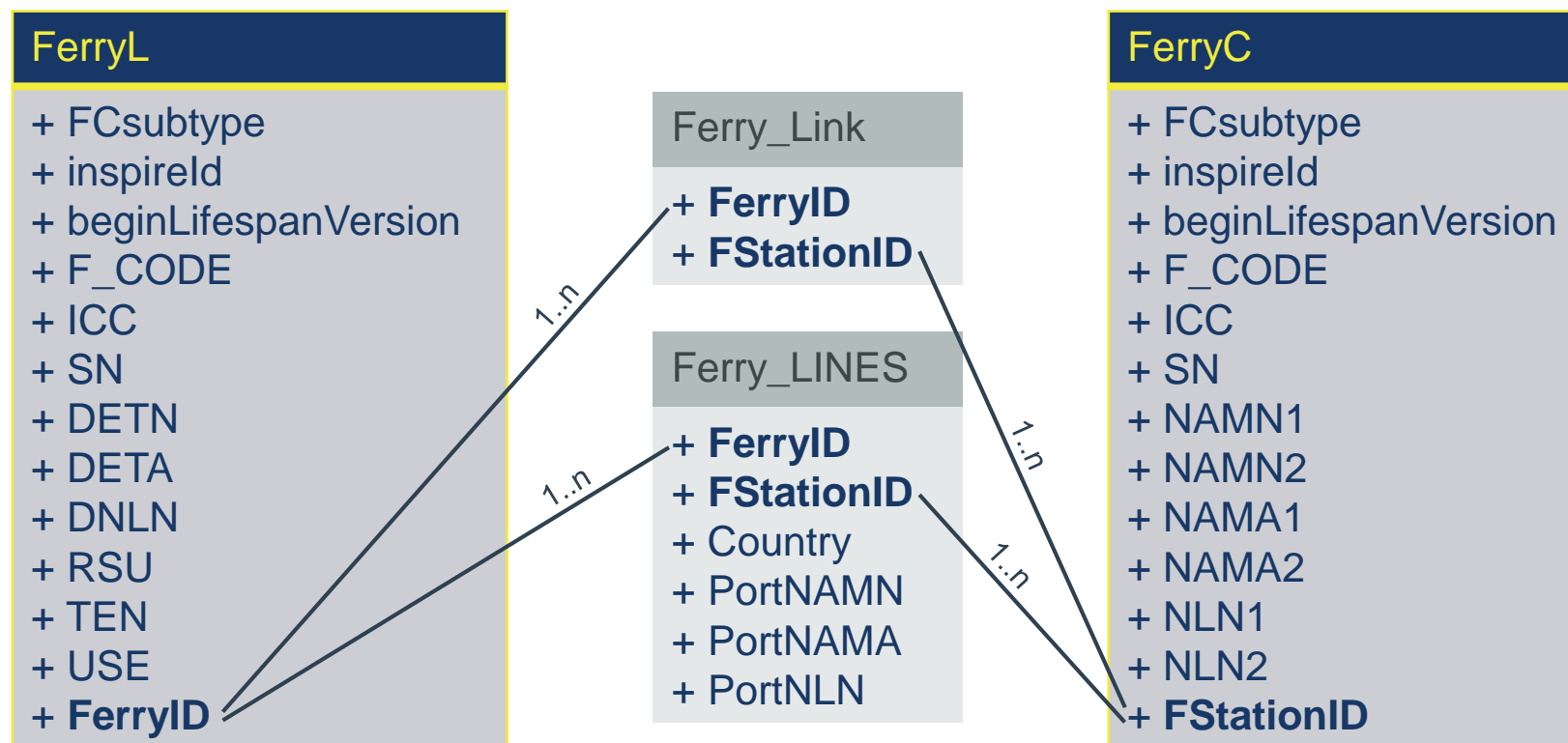
Update ERM Technical Guide

- Fictitious axes have to be split
 - At dams
 - In case of changes in type of the watercourse (WatrcrsA/LakeresA)
- Topological rule: (H080)
Fictitious axes are well inside water area



Modelling of ferries

- Status quo

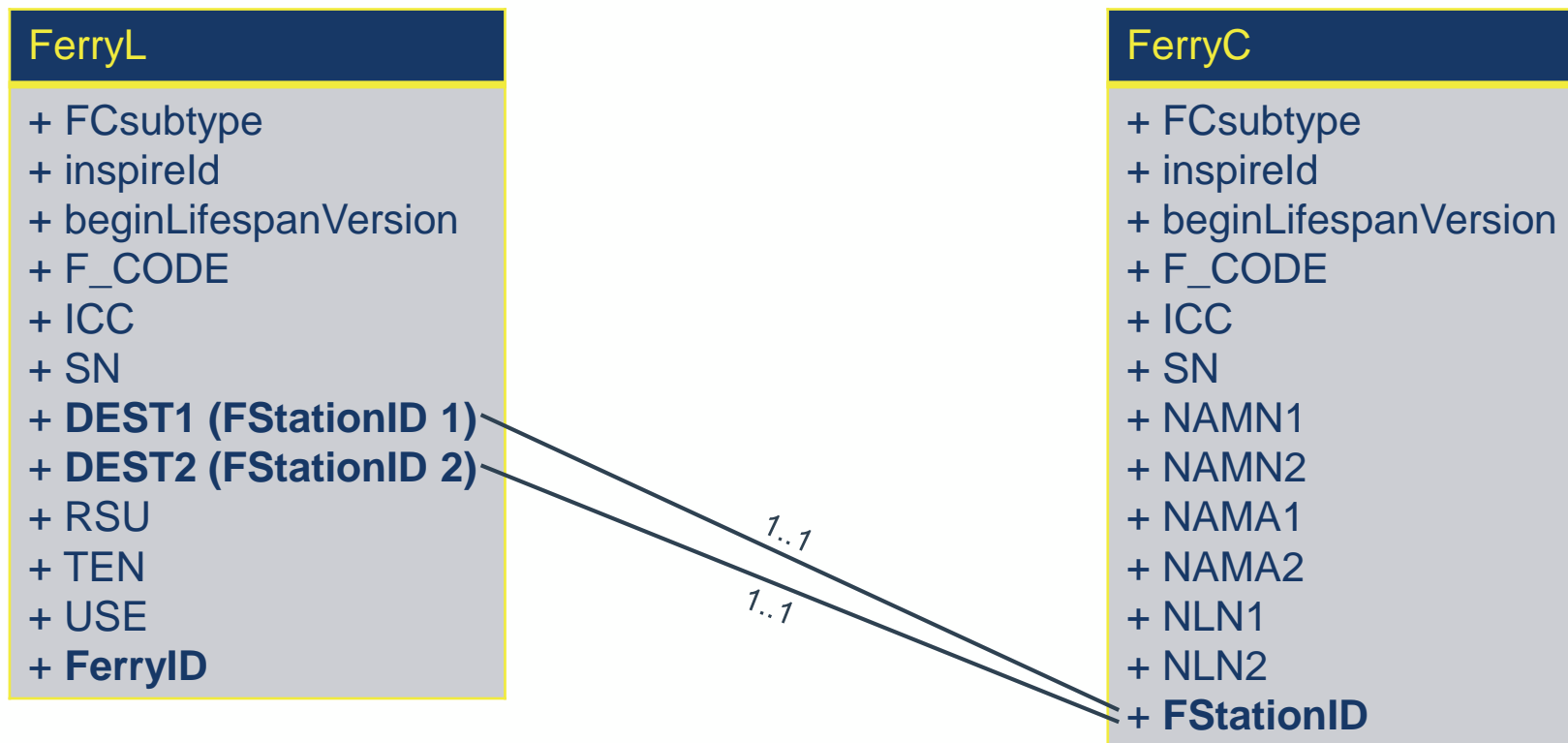


→ Difficult to update and to keep consistent

Modelling of ferries

- New model

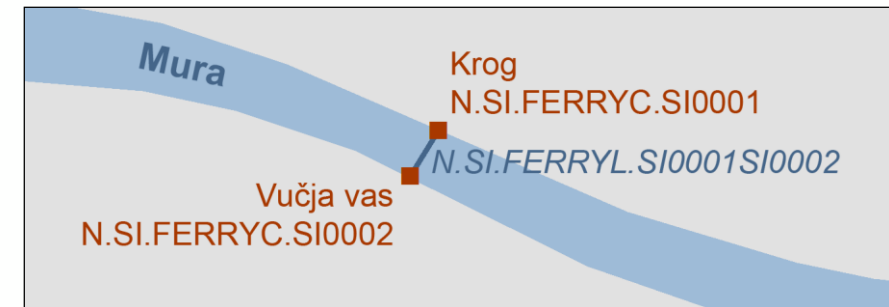
Sorting of destinations
(DEST1/2) in
alphabetical order!



→ Easy to produce and to understand for Data Producers and Users

Modelling of ferries

- Update of ferry lines and ferry stations by Data Producers
 - Example for ferries within one country

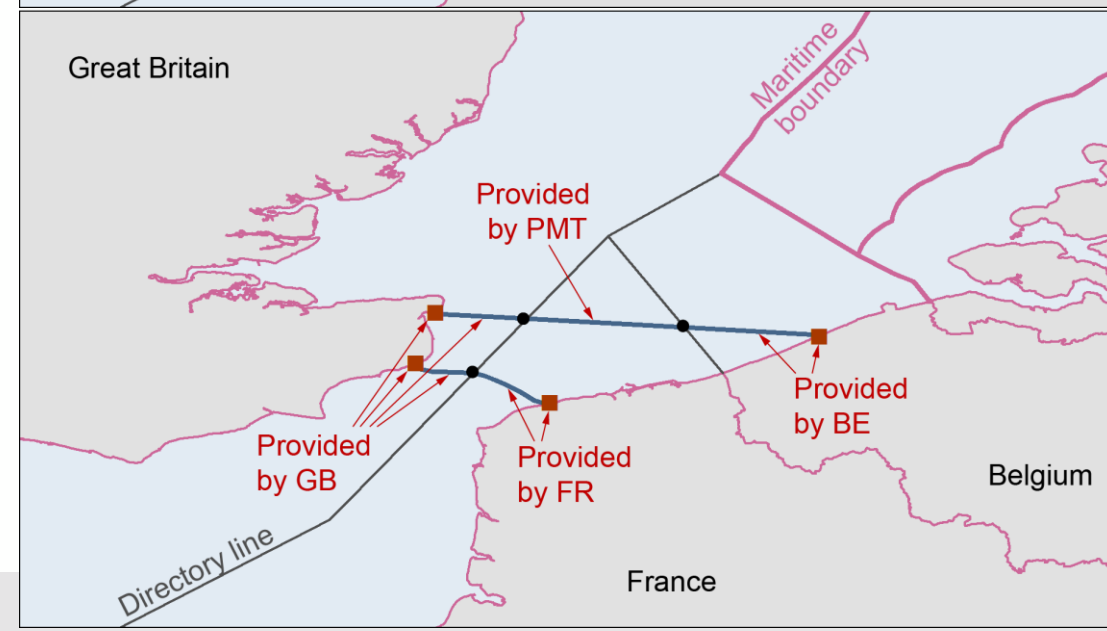
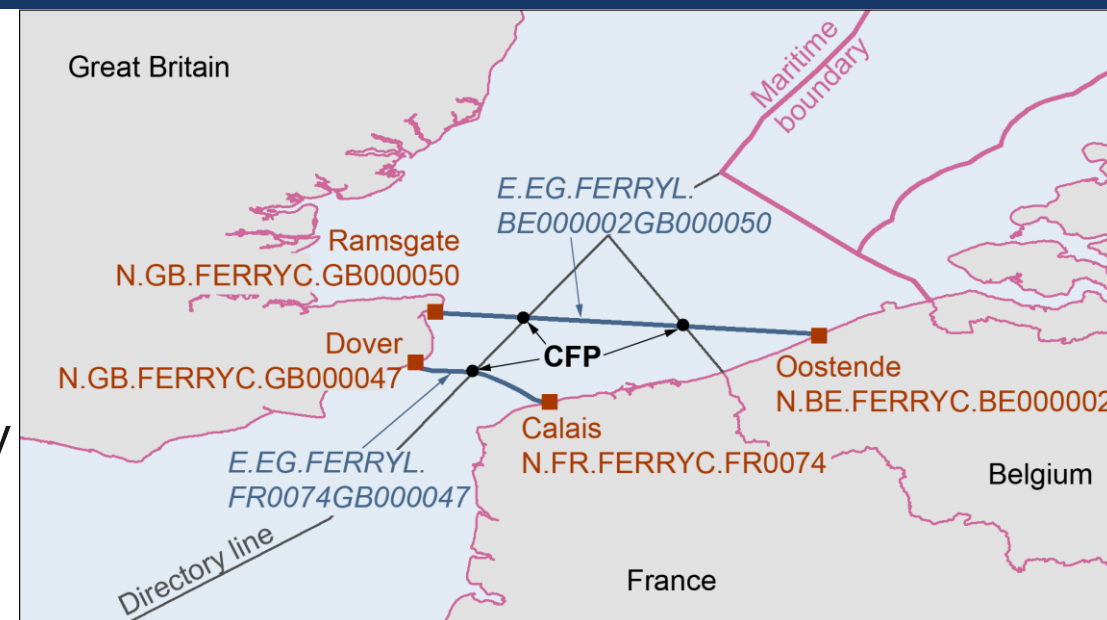


FerryL	Values for ferry line
FCsubtype	Ferry Crossing
inspireId	_EG.ERM:EG.6c85ae76-2...
beginLifespanVersion	11.01.2019
F_CODE	AQ070
ICC	SI
SN	347
DEST1 (FStationID 1)	N.SI.FERRYC.SI0001
DEST2 (FStationID 2)	N.SI.FERRYC.SI0002
RSU	All year
TEN	Not part of TEN-T network
USE	National
FerryID	N.SI.FERRYL.SI0001SI0002

FerryC	Values for ferry station 1	Values for ferry station 2
FCsubtype	Ferry Station	Ferry Station
inspireId	_EG.ERM:EG.70bf0eb6-5...	_EG.ERM:EG.69955337-c...
beginLifespanVersion	10.01.2019	10.01.2019
F_CODE	AQ080	AQ080
ICC	SI	SI
SN	347	347
NAMN1	Krog	Vučja vas
NAMN2	<NULL>	<NULL>
NAMA1	Krog	Vucja vas
NAMA2	<NULL>	<NULL>
NLN1	slv	slv
NLN2	<NULL>	<NULL>
FStationID	N.SI.FERRYC.SI0001	N.SI.FERRYC.SI0002

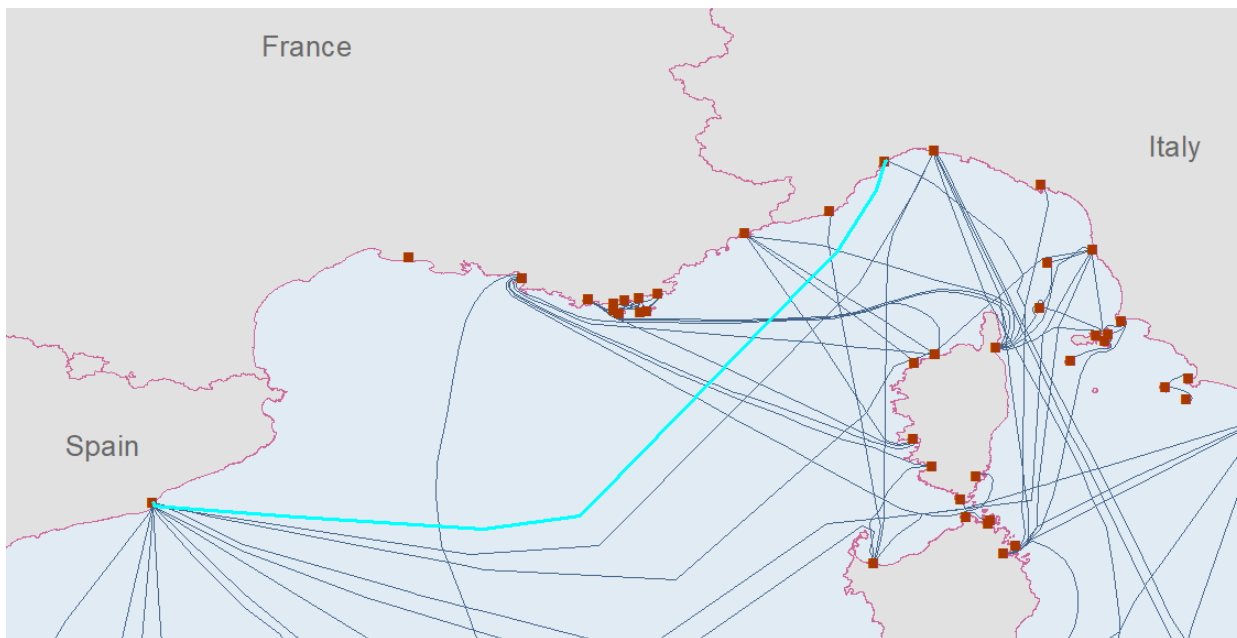
Modelling of ferries

- Update of ferry lines and ferry stations by Data Producers
 - Ferries that crosses the International Boundary
 - See population of attributes for national ferries
 - Get in contact with colleagues in destination country to use the correct FStationID
 - Consider CFP (first provision by BKG)
 - “Middle part” maintained by Production Management Team / BKG
 - Only real changes to avoid workload



Modelling of ferries

- BKG will provide ferries with new model in ERM 2020 (based on updated ferries in 2018)
→ Data Producers should use this dataset to update their ferries
- Example in practice



Identify

Identify from:

FerryL

- EG.ERM:ES#IT.FERRYL.000000000037
 - FerryC
 - EG.ERM:EG.faedb521-5f7f-4fe3-b7a3-f25f377a2f07
 - FerryC
 - EG.ERM:EG.d871d84f-cf94-43bb-afcd-35066dc036e5

Location:

Field	Value
OBJECTID	585
Shape	Polyline
FCsubtype	Ferry Crossing
inspireId	_EG.ERM:ES#IT.FERRYL.000000000037
beginLifespanVersion	00:00:00
F_CODE	AQ070
ICC	ES#IT
SN	3470
RSU	All year
TEN	Unknown
USE	International
FerryID	E.EG.FERRYL.ES0006IT000026
Shape_Length	7,828192
DEST1	N.IT.FERRYC.IT000026
DEST2	N.ES.FERRYC.ES0006

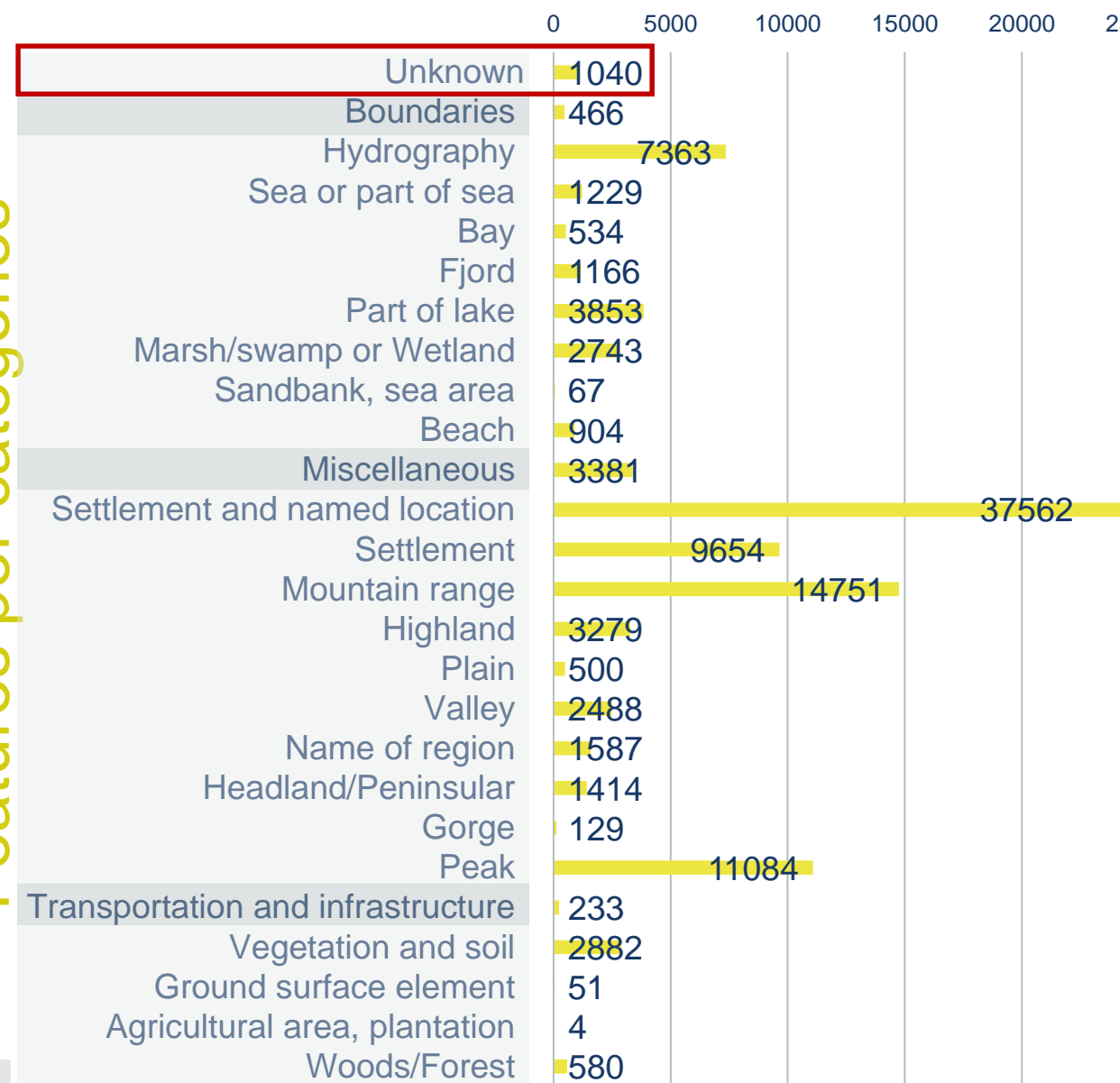
< >

Identified 1 feature

Modelling of GNameT / GNameL

- Theme NAME holds only text features for named places that cannot be put into attributes, e.g. Mountain range, Valley, Peak, Gorge, Bay, Sea, Fjord, Inlet/cape, Sandbank, ...
→ Maps at scale 1 : 250 000
- Annotation feature class GNameT and line feature class GNameL
- CNL: Category Code for the named location
- SID: Symbol Identification

Features per categories



Modelling of GNameT / GNameL

- Symbol Identification (SID), see Technical Guide page 89/90
 - Blue:
Hydrography features
 - Black:
Big regions, or geomorphologic features added to illustrate the land occupation and the vegetation boundaries
 - Brown or magenta:
Boundaries, settlements, transportation and miscellaneous
- Are Data Producers able to implement clear instructions?

SID = 1	TEST
SID = 2	TEST
SID = 3	TEST
SID = 4	TEST
SID = 5	TEST
SID = 6	TEST
SID = 7	TEST
SID = 8	TEST
SID = 9	TEST
SID = 10	TEST
SID = 11	TEST
SID = 12	TEST
SID = 13	TEST
SID = 14	TEST
SID = 15	TEST
SID = 16	TEST
SID = 17	TEST
SID = 18	TEST
SID = 20	TEST
SID = 23	TEST
SID = 25	TEST
SID = 34	TEST

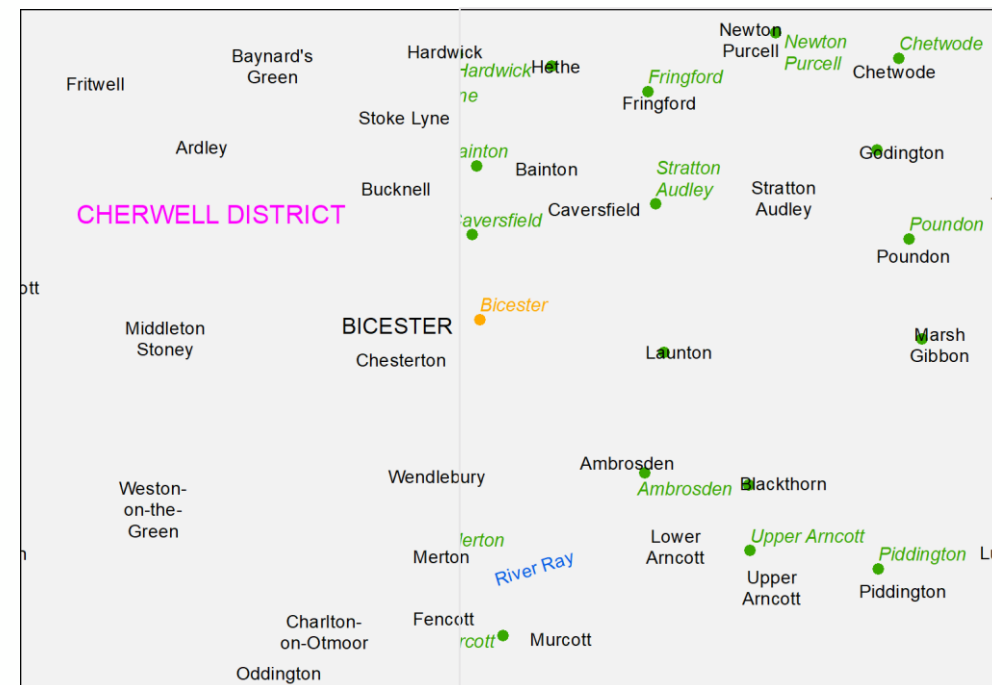
National or state parks, forests, etc. Large regional features Area name	TEST	7
	TEST	8
	TEST	9
	TEST	10
Highland Plain Valley	TEST	3
	TEST	4
	TEST	5
	TEST	6
	TEST	7
Headland Peninsular	TEST	3
	TEST	4
	TEST	5
Peaks Top Settlements	TEST	23
	TEST	25
Group of islands	TEST	3
	TEST	4
	TEST	5
	TEST	6
	TEST	7
Large bodies of open water	TEST	18
	TEST	20
Medium bodies of open water	TEST	17
	TEST	18
Small bodies of open water	TEST	13
	TEST	14
	TEST	15
Large swamp	TEST	17
	TEST	18
Boundaries, administrative units	TEST	34

Modelling of GNameT / GNameL

■ Examples



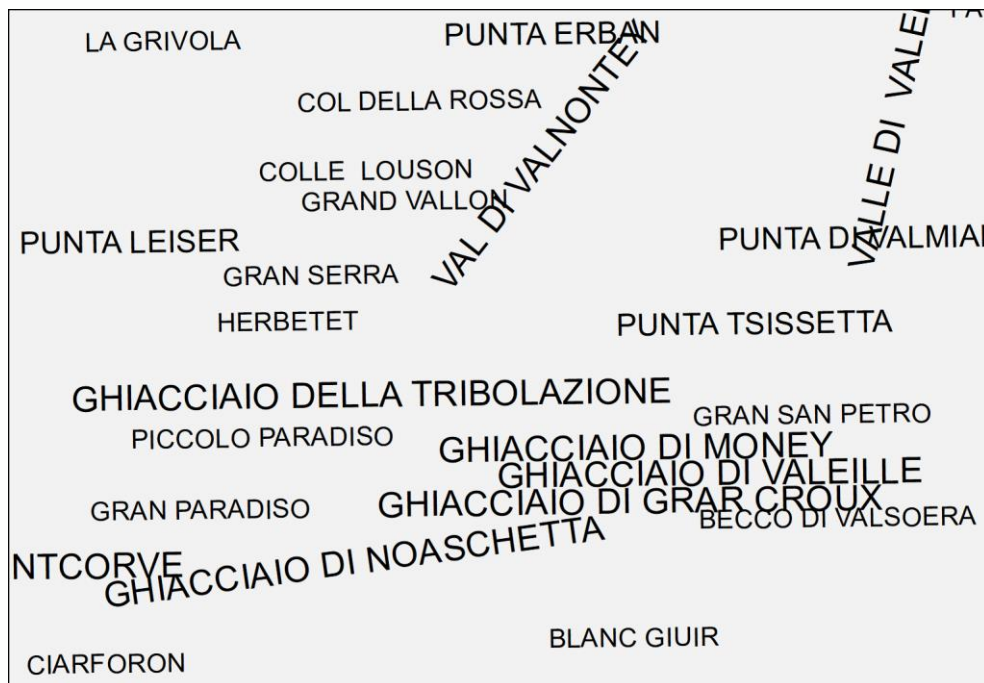
Mountain range, peaks with heights ☺
Different colour of peaks ☺



Settlements with names
which are also available in BuiltupP
(orange and green in the example) ☹

Modelling of GNameT / GNameL

■ Examples



Labelling not suitable for maps ☹

Handling of missing attribute values

- Missing attribute values - Status quo:

Attribute value Attribute type	Null/No value	Unknown	Unpopulated	Not Applicable
Meaning in the real world context	Information cannot be applied	Information is missing	Information exists but has not been collected	Information doesn't exist
Text	N/A	UNK	N_P	N_A
Integer: Coded	-32768	0	997	998
Integer: Actual value	-32768	-29999	-29997	-29998

→ Confusion, difficult to provide correct information

Handling of missing attribute values

- Missing attribute values - Solution:
 - If information is missing for any reason then the value will be a default value
 - Easy to understand for Data Producers and Users
 - Simplification of validation

Attribute type	<ul style="list-style-type: none">- Information cannot be applied- Information is missing- Information exists but has not been collected- Information doesn't exist
Text	UNK
Integer	-32768

Language codes

- Outcome of cooperation with name expert (EG Open Regional Gazetteer)
- Usage of three-letter code ISO 639-2/B (B = bibliographic code)
 - Already applied by EBM and ERM,
one exception up to now: *mkd* for Macedonian → Will be changed to correct code *mac*
 - Code in EBM and ERM in capital letters up to now → Will be changed to lower case
- Avoid usage of collective language codes → Assign name to one language

Example:

Individual 😊	Collective ☹️
sma (Southern Sami) sme (Northern Sami) smj (Lule Sami) smn (Inari Sami) sms (Skolt Sami)	smi for Sami languages

Poll

- Will be provided in the Production Management System
- Production Management Team would like to have information by data producers about
 - Production of ERM
 - Used tools
 - Provision of data
 -
- Invitation will be sent by Production Management Team
- Please fill out until 30th November 2019

EBM, ERM and EGM Production Management System

[home](#)

[poll](#)

[documents](#)

[meetings](#)

Poll. please fill out the poll

EG Producer Meeting, Ljubljana, 24th / 25th September 2019

Thank you for your attention

Contact:

Jörgen Spradau, Regine Elling and Alexander Reichelt

Federal Agency for Cartography and Geodesy

Richard-Strauss-Allee 11

60598 Frankfurt am Main / Germany

Email: ebm@bkg.bund.de