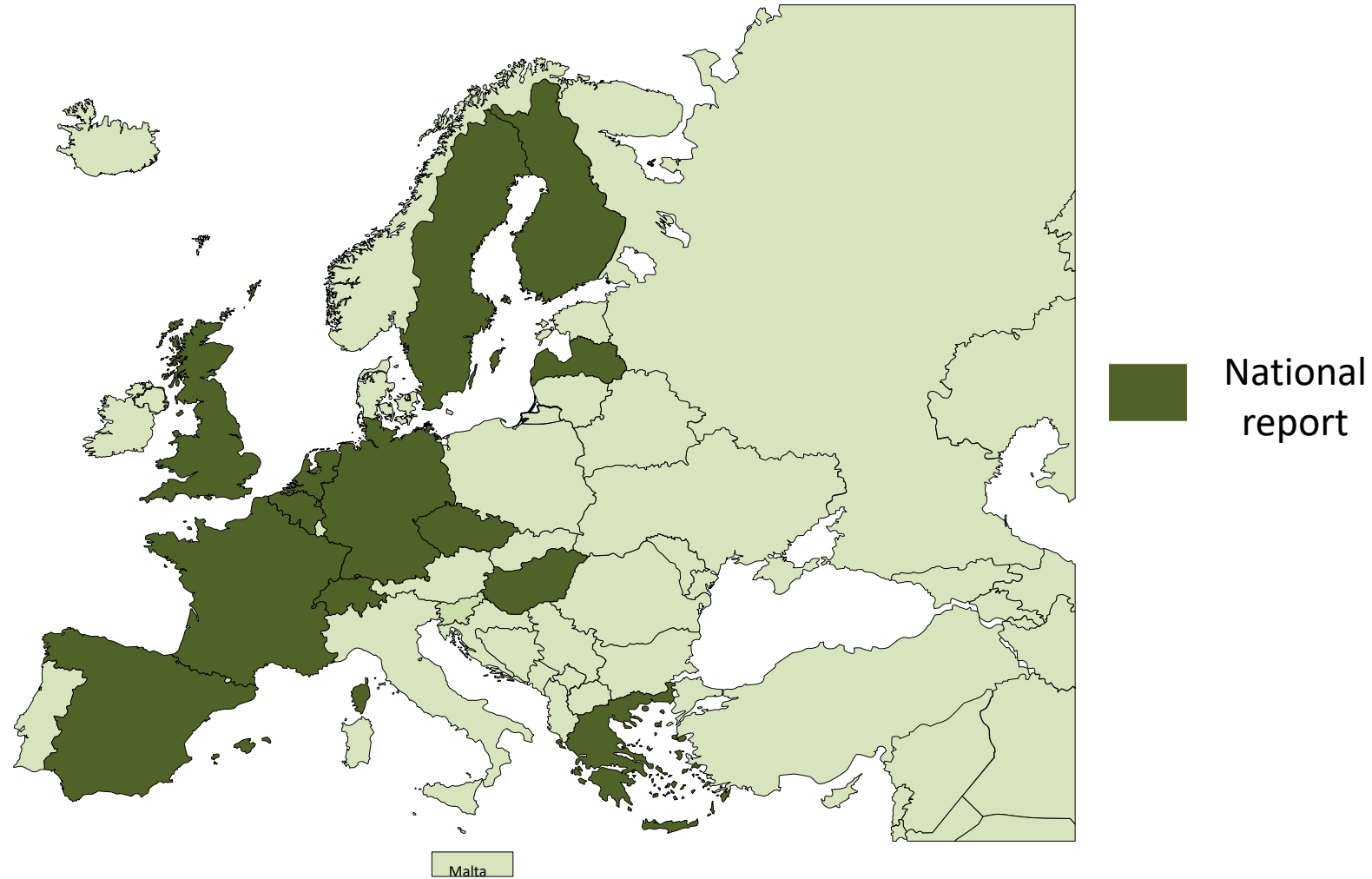


National Reports

24. April 2019, Brussels

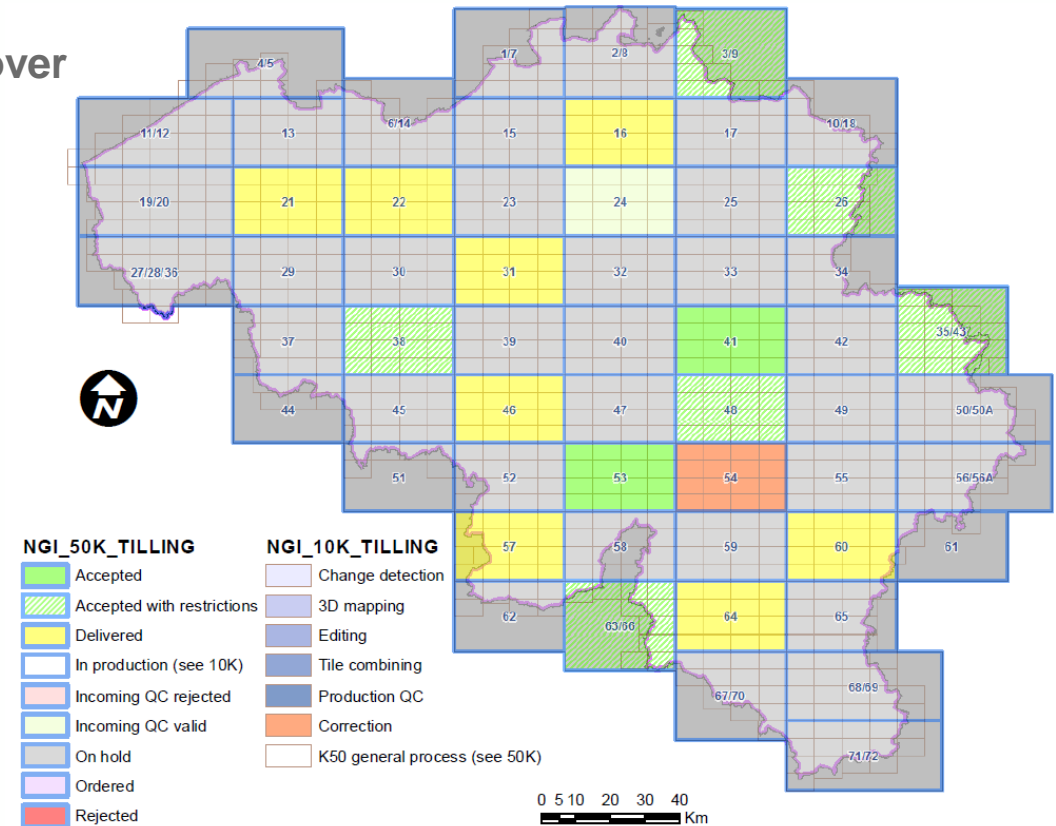
Prepared by Tamás Palya,
vice-chair of QKEN

15 National reports from 13 countries



National Geographic Institute, Belgium From January 2019 to April 2019

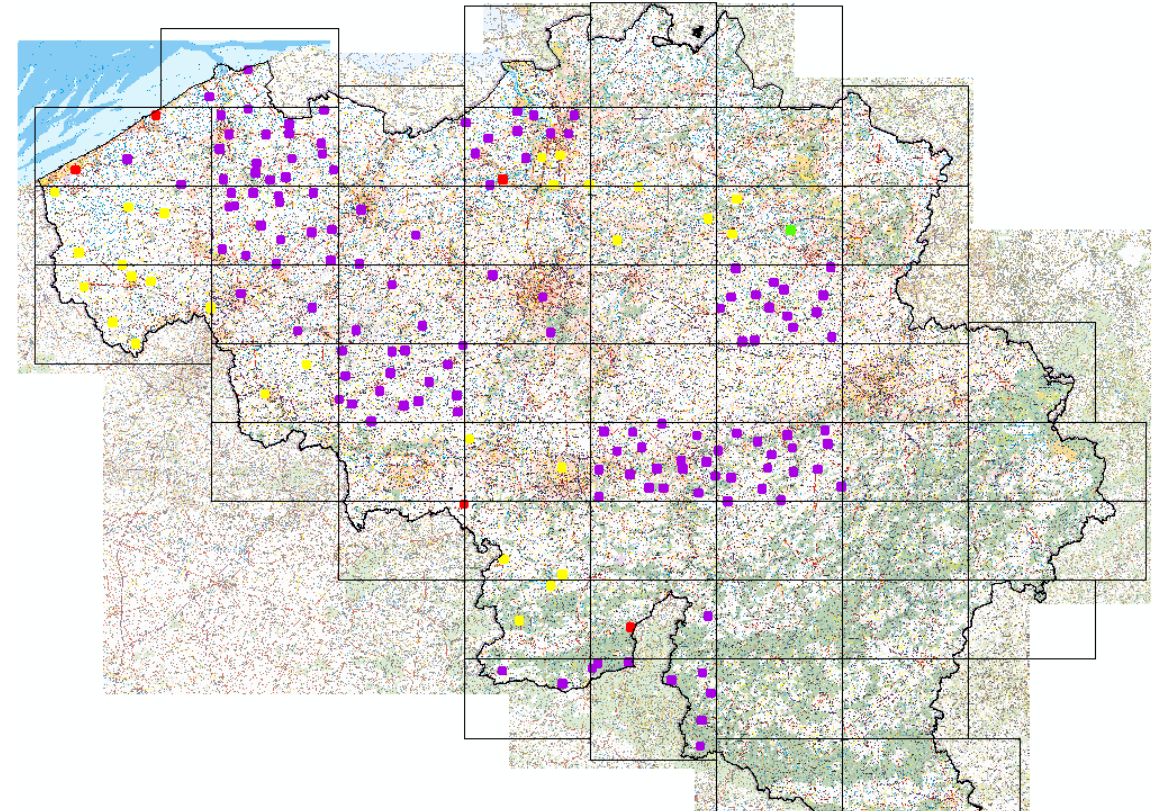
- External data update is ongoing (2018-2020)
 - Constructions, road network, hydrographic network, landcover
 - Per sheet
 - QC in progress
 - Automatic check for the update of objects metadata information. Update on FME scripts that classifies updated data in different classes: unchanged, modified, new.



National Geographic Institute, Belgium From January 2019 to April 2019

- **Quality Assessment using field data**
 - Data quality of actual reference data
 - Data quality of POI information
 - Quality control methods used
 - Quality control of external data (OSM)
 - Today we have results of 128 zones (100ha)

- Field survey is done (128)
- Field survey is ongoing (5)
- Zones are ready for survey (3)
- Zones are being prepared for survey (32)

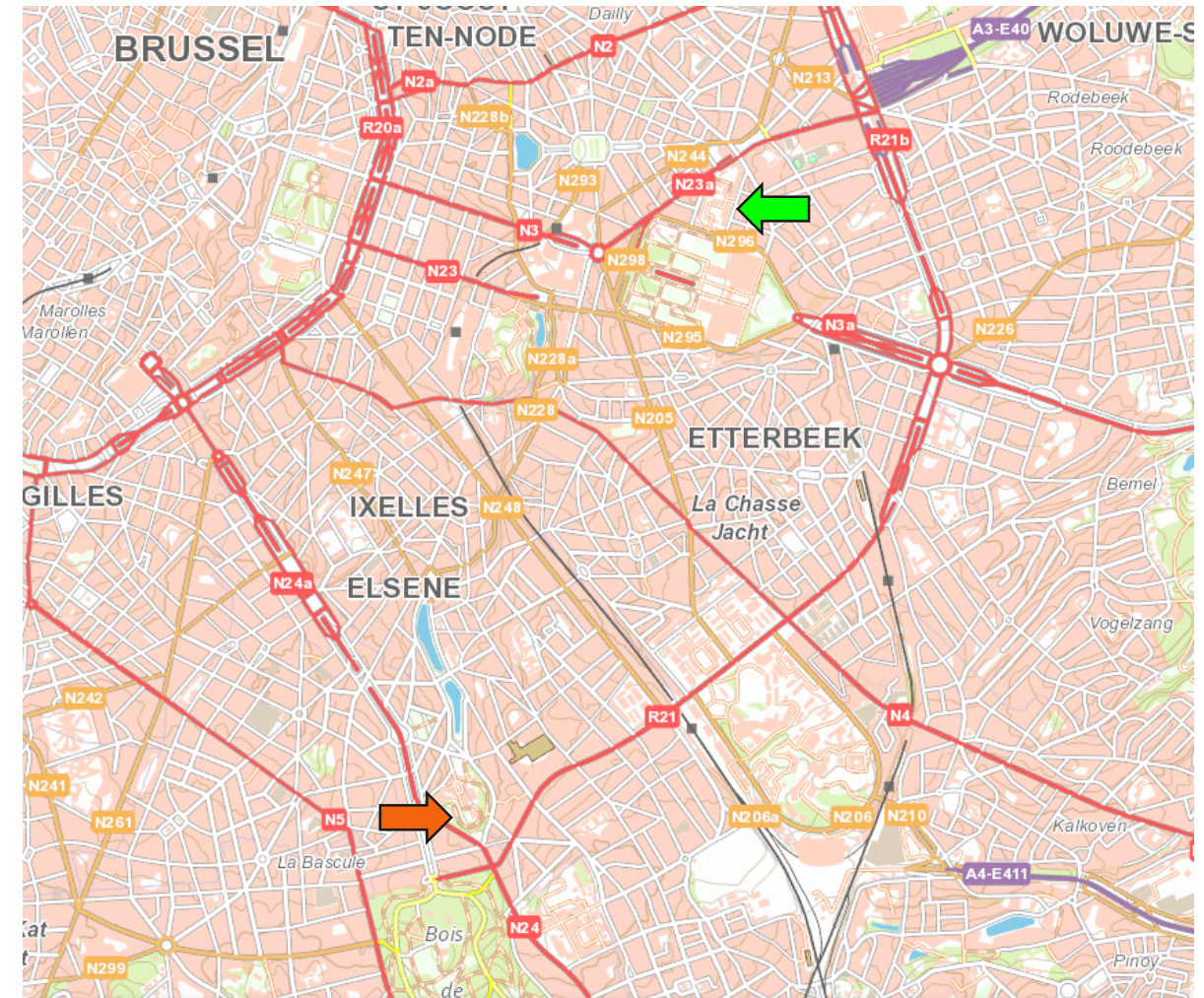


National Geographic Institute, Belgium From January 2019 to April 2019

- **Working on a technical vision 2020-2025**
- **Setting up Quality control process for eTOD data**
 - **First test phase (May-June 2019)**

National Geographic Institute, Belgium From January 2019 to April 2019

- November 2019 - NGI will move to the Royal Military Academy



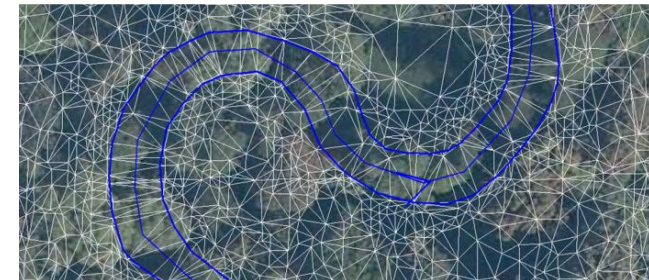
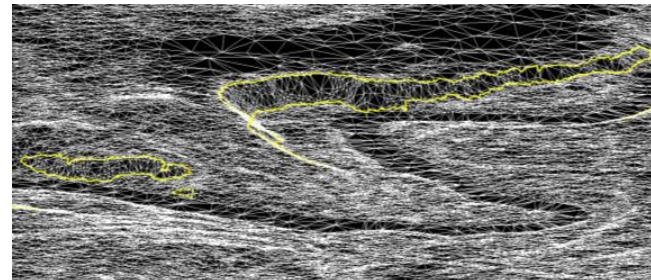
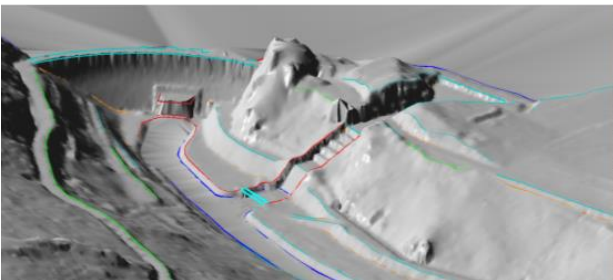
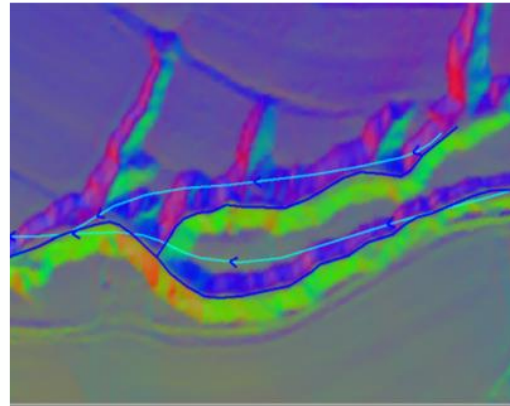
Czech Office for Surveying Mapping and Cadastre/Czechia December 2018 to August 2019

- Cadastral data Quality increase
 - Finalizing digitalization of cadastre maps – 99,3%
 - Actualization of technical informations - revision
 - Type of and
 - Type of usage of the land an buildingis
 - Property security



Czech Office for Surveying Mapping and Cadastre/Czechia December 2018 to August 2019

- Increase quality of geometric definition of ZABAGAED (2013-2019)
 - Highways, major roads
 - Railways
 - Rivers
 - Rivers side
 - Terrain edges (3D)
 - Measured points (3D)
- Geospatial accuracy 1m



Czech Office for Surveying Mapping and Cadastre/Czechia December 2018 to August 2019

- Increase quality of geometric definition of ZABAGED buildings (2015-2019)
 - Ortophoto ČR
 - Analytical outputs from LLS – 3D point clouds and identified buildings
 - ISKN – geometric points with quality characteristic, change data set with new and deleted buildings since last period of LMS
 - Spatial intersection between cadaster map and reality to identify mismatches



IGN, FRANCE

From December 2018 to April 2019

- **News concerning Data Quality**
 - Works about deep learning and semantic segmentation to produce land use at great scale (OCS GE)
 - The results are good compare to equivalent works. Need to compare with field reality.

IGN, FRANCE

From December 2018 to April 2019

- News concerning quality management
 - The new organization of the IGN requires an update of the quality management system planned in 2020.

IGN, FRANCE

From December 2018 to April 2019

- Any other news that would be of interest for Q-KEN?
 - How visualization / dashboards is progressing in your organisation?
 - no work during the period

National Land Survey, Finland From November 2018 to May 2019

- **Data Quality**

- Dashboard demonstration held in NLS.
- Quality management in the National topographic database of Finland – workpackage started.
- The package is part of New national database of Finland-program I, 2015-2019.
- Tasks
 - Designing the concept
 - Writing fourth quality book
 - Designing the audit process for other data producers
 - Designing quality tests
 - Designing dashboard quality tests and error register

National Land Survey, Finland From November 2018 to May 2019

- **Other news**
 - **Three previous quality books were updated**
 - Quality handbook for Aerial images and orthophotos
 - Quality handbook for Laser scanning (3D point clouds)
 - Quality handbook for Digital elevation model (DEM)
 - **GIS platform is ongoing program (Antti Jakobsson)**
Funded by the Ministry of agriculture and forestry.
 - The new national topographic data base of Finland is part of program.
 - GIS platform ends at the end of 2019.



National Land Survey, Finland From November 2018 to May 2019

- **Topic I can offer for next webinar**
 - Results of the Quality management in the National topographic database of Finland

BKG, Germany

From November 2018 to April 2019

- **News concerning Data Quality**
 - Working group on quality management 2. phase
 - Goals: tool for documentation of user demands
 - comparison of the ISO 19115 (+19113,19114, 19138) and 19157
 - XML metadata-files as example for two datasets (→ in the next phase for all products)

BKG, Germany

From November 2018 to April 2019

- News concerning quality management
 - discussions with the Federal Ministry of the Interior (topic: report on quality information in metadata)

BKG, Germany

From November 2018 to April 2019

- Any other news that would be of interest for Q-KEN?
 - How visualization / dashboards is progressing in your organisation?
 - No progress with dashboards
- New president in place: Dr. Prof. Paul Becker
New plans, new strategy (new geoportal and webshop)

Ordnance Survey GB

From December 2018 to April 2019

- **News concerning Data Quality**
 - Work on new editing systems continues to show the need for data improvement
 - OS is continuing to get requests for improved data quality through the work that is being done with Government

Ordnance Survey GB

From December 2018 to April 2019

- **News concerning quality management**
 - Our new Data Governance Framework is slowly taking shape and has recently started to link in with a new vision for data.
 - Increasing focus on ensuring that we have well defined principles and policies and that we enforce them
 - Focus on ensuring that use cases are documented at the outset
- **New Data Authority body up and running. Is linked in with the process of commissioning and delivering projects**
- **OS continues to advise other parts of Government on data.**

Ordnance Survey GB

From December 2018 to April 2019

- Any other news that would be of interest for Q-KEN?
 - Political landscape continues to change. Further organisations are possibly being invited into the Geospatial Commission work
 - First projects have just finished with follow on activities already planned and underway (linked data)
 - Projects to open up OS MasterMap are gaining in momentum but still subject to funding agreements
- If you haven't seen it, have a look at the news of our high level sensor
<https://www.ordnancesurvey.co.uk/about/news/2019/astigan-high-altitude-pseudo-satellite.html>
- And just because it is becoming a big issue in GB
<https://www.youtube.com/watch?v=kFmmYwKixhM>

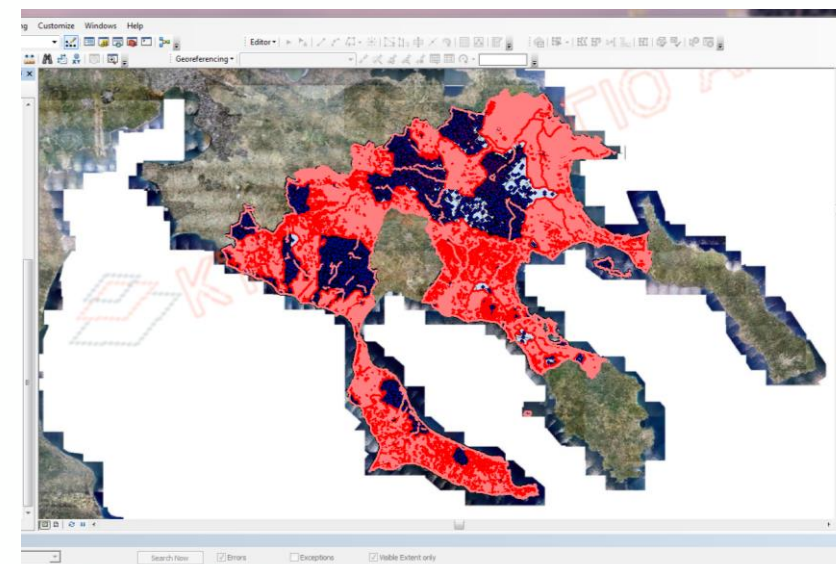
Ordnance Survey GB

From December 2018 to April 2019

- Topic I can offer for next webinar
 -
 - Nothing at the moment

Hellenic Cadastre , Greece From Jan 2019 to Apr 2019

- News concerning Data Quality
 - National Cadastre creation: Quality Control for all delivered data using the Hellenic Cadastre Quality Plan based on ISO 19157 (running 72 contracts, ~ 25,6 million property rights)



Hellenic Cadastre , Greece

From 07 2018 to 12 2018

- News concerning quality management
 - HC develop a custom made PMIS specifically designed for cadastral projects linked to the already installed MS Project Server. We are still working towards a PMIS extension, which includes the monitoring and management of all the quality control procedures. It is expected to be completed until the end of next month.

KT123 Areas of Western Peloponnisos Report of: **November 2016** Current Status: **Rights Collection**

Overview KPIs Variables Financial Timetable Risks Issues **Deliverables** Dashboard Stakeholders

#	Deliverable	Date of First Submission	Loading Failures	Date Loaded	Control Start Date	Control End Date	Finalisation Date	Results Sent Date	Approval
1	Quality Plan	15/6/2016*	2	19/6/2016	21/6/2016	29/6/2016	10/7/2016	15/7/2016	Rejected due to missing information
2	Quality Plan	25/7/2016*	3	28/7/2016	29/7/2016	7/8/2016	10/8/2016	12/8/2016	Approved
3	Preliminary Cadastral Map	29/9/2016	5						

*the dates will be links to the DM

+ Add QP + Add PCM

#	Description	Legal	Spatial	Department	Assigned at	Assigned to	Deadline	Completion Date	Result
1	Database Loading	✓	TEΔΠΕ	TEE NA TAEETY	29/7/2016	John Doe	6/8/2016	3/8/2016	Approved
2	Check if all "locked" rights are included in the deliverable	✓	TEΔΠΕ	TEE NA TAEETY	29/7/2016	Jane Doe	6/8/2016	3/8/2016	Rejected
3	Automated checks on spatial data and topology validation	✓	✓	TEΔΠΕ	TEE NA TAEETY	1/8/2016	John Doe	8/8/2016	Clarification needed

NA Assigned to	NA Assigned at	Deadline	NA Completed at	Evaluation Outcome	Contractor Notified At	Contractor Response Deadline	Contractor Response Date
John Doe	02/11/2016	25/11/2016	18/11/2016	Clarification needed	25/11/2016	25/11/2016	25/11/2016
TEΔΠΕ Assigned to Mike Don	TEΔΠΕ Assigned at 05/11/2016		TEΔΠΕ Completed at 15/11/2016				

#	Description	Deliverable	Upload Date
1	Acceptance of Quality Plan	Deliverable #1	20/10/2016
2	Acceptance of PCM	Deliverable #2	22/10/2016

+ Add Attachment

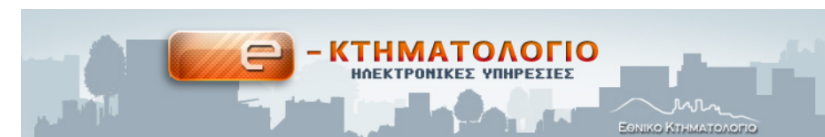
Comments

Save as draft

Hellenic Cadastre , Greece

From 07 2018 to 12 2018

- Any other news that would be of interest for Q-KEN?
 - Since the end of 2018, the agency has a new viewing service for orthophotos (50cm GSD) on its website.
Are now available on the website of Hellenic Cadastre, orthophotos that cover the whole country for 2 time periods (2007-2009 / 2015-2016).
 - Since the beginning of 2019, the organization has a new service on its website, which allows the owner's rights to be declared in a very friendly environment for the user. It concerns redesign of an earlier application.
 - Hellenic Cadastre supports the forest agencies in the management of geospatial data and provide technical support to them.



Κτηματογράφηση

- » Ηλεκτρονική Δήλωση Κτηματολογίου (Ν.2308/1995)
- » Έκδοση νέου εντύπου οφειλής
- » Εκτύπωση Αποδεικτικού Υποβολής Δήλωσης
- » Προανάρτηση
- » Ανάρτηση
- » Συνεδριάσεις επιτροπών ενστάσεων
- » Τελικά στοιχεία κτημ/σης - Αρχικές εγγραφές
- » Εντοπισμός μέσω κινητού

BFKH FTFF/Lechner Ltd, Hungary

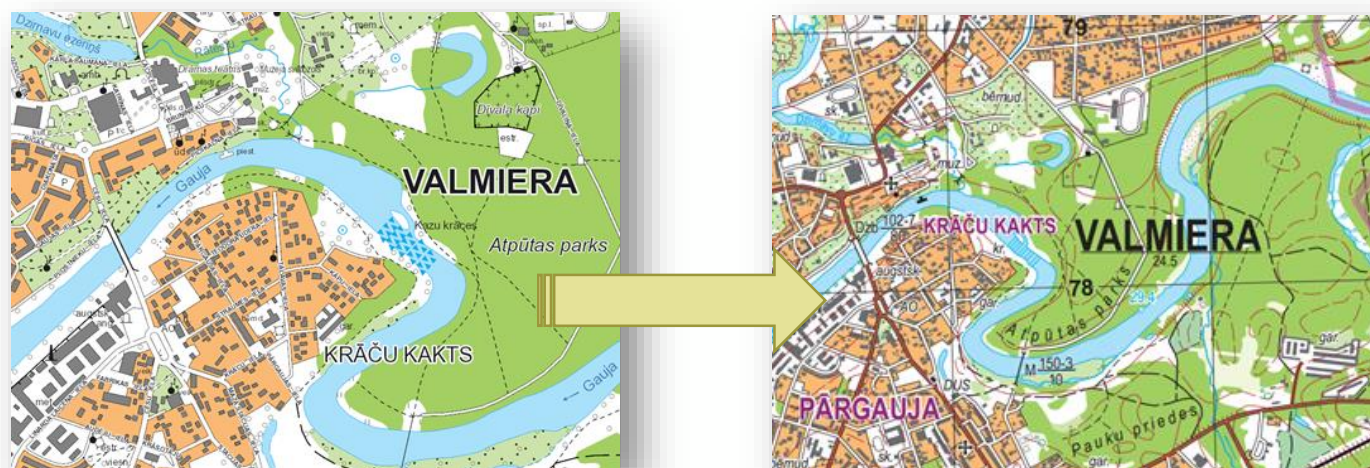
From Jan 2019 to April 2019

- **News concerning Data Quality**
 - Quality control of attributes of the Hungarian unified land registry
 - a) comparative study between the attributes of the Cadastral map and the Land registry (consistency study)
 - b) Based on differences were made the correction by the land offices
 - Quality Control process on LPIS
- **News concerning Quality management**
 - Full certification audit is done in February.
 - It has not decision yet about the continuation, after 1st of April.
- **Any other news that would be of interest for Q-KEN?**
 - New reorganization plan for our Institute from 1st of April, 2019. Merging with Lechner Non-profit Ltd (Hungarian Spatial planning Knowledge Center). The governmental decision was made on 25th of March 2019.
 - No any progress of dashboard.
- **Topic I can offer for next webinar or meeting**
 -

LGIA, Latvia

From December 2018 to April 2019

- To ensure data compability between different map scales a unified classification system for geospatial objects is being introduced – DFDD (Defence Geospatial Information Working Group Feature Data Dictionary)
- Unified data quality rules are introduced for all data produced with ArcGIS software (currently topographic map in scale 1:50k and pilot project of map 1:10k)
- Ongoing efforts on maintaining all the products of LGIA up to the quality standards of corresponding specifications



LGIA, Latvia

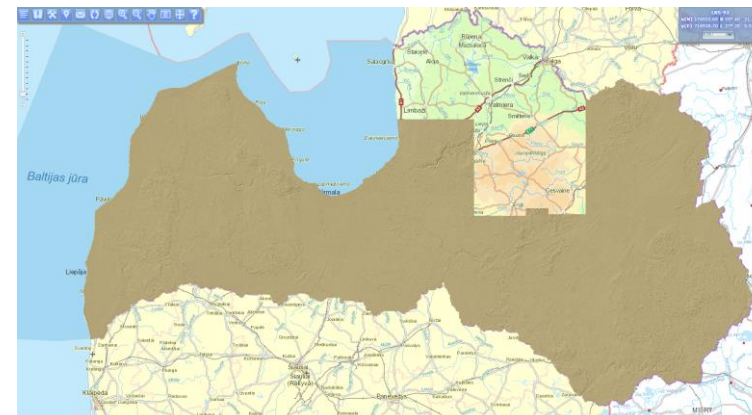
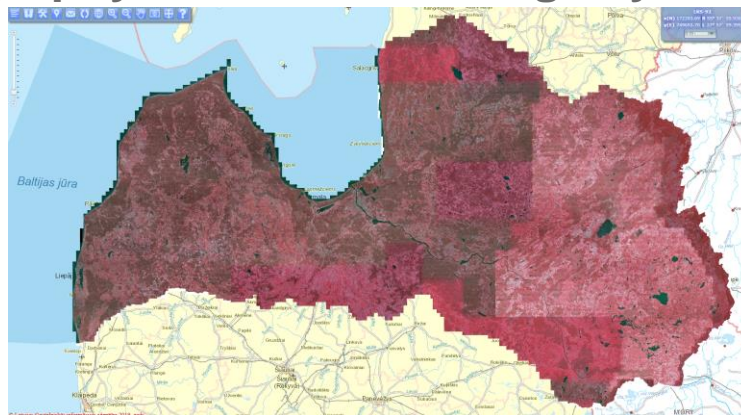
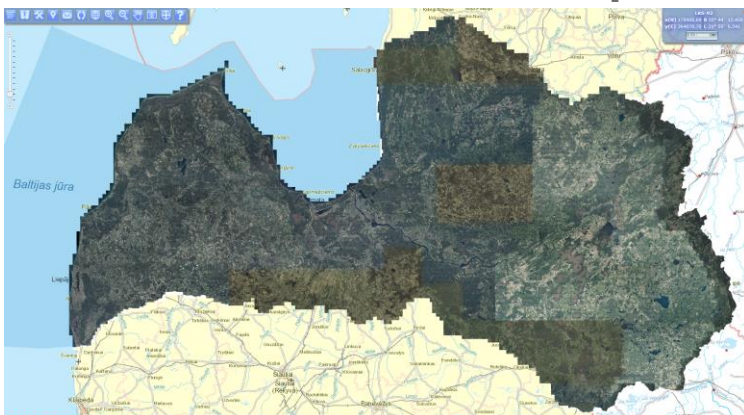
From December 2018 to April 2019

- Development of a new production concept for topographic plans in scale 1:2k:
 - Built-in tools for reduction of errors
 - Less manual work needed for quality control
 - More attributes are being added to features
- In order to use more up to date data for the production of topographic maps, an intensive production cycle or orthophoto has been introduced – time from aerial photography to a finished product reduced to 3-6 months
- The cycles of the whole area coverage updates reduced from 7 to 6 years for topographic maps in scales 1:10k and 1:50k to comply with two 3-year update cycles of orthophoto

LGIA, Latvia

From December 2018 to April 2019

- More of visualisation and dashboards will be included in the new LGIA Web browser, that is currently being developed
- The 6th cycle of the orthophoto coverage has been completed (2016-2018), available as RGB, CIR, RGBI images
- In 2019 starts the aerial photography of the 7th coverage cycle



- Coverage of LiDAR data increased to 82% of Latvia, expected to reach 100% in 2019

The State Land Service (SLS), Latvia

From December 2018 to April 2019

- **News concerning Data Quality**

- Finished correction of errors in the building construction area of 3000 buildings on the Cadastral map and in the textual part of Cadastre. Results – 90% of building data has been corrected
- Completeness of engineering structures on the Cadastral Map, more than 800 engineering structures (roads) have been display on Cadastral Map



The State Land Service (SLS), Latvia

From December 2018 to April 2019

- News concerning quality management
 - the quality criteria are under revision
 - the Control Register is under reconstruction

Kadastra datu kvalitātes kontroles reģistrs

Jekaterina Pozdnaka
PPKD Kadastra pārraudzības daļa
sistēmu analītiķis

Par periodu: no: 01.01.2019 līdz: 02.04.2019

Pakalpojuma kods:

PAIS NR.:

Kontrole:

Kadastra numurs:

Reģions:

Izveidotājs:

Reģions:

Kontrollieris:

PAIS NR.	Pakalpojuma kods	Kontrole	Datums	Kadastra numurs	Nekontrolētais speciālists	Kontrollieris
770134-1	20134 reģistrācija	Īrmeizojā	02.01.2019		Dagda Ozoliņa	Imāns Kaufmanis
770701-1	20134 reģistrācija	Īrmeizojā	02.01.2019		Natalja Oļomņikova	Imāns Kaufmanis
770701-1	20134	Īrmeizojā	02.01.2019	80900020176, 68900020177	Natalja Oļomņikova	Imāns Kaufmanis
778225-1	10102	Īrmeizojā	02.01.2019	80960040060	Tamāra Ivanova	Līga Burve-Volonte
778687-1	20104	Īrmeizojā	02.01.2019	32900020034, 32900020083, 32900020083	Daina Bērziņa	Lūna Ribkīnska
781916-1	70210	Īrmeizojā	02.01.2019	01000300038	Inta Robļevska	Ilga Peļpiņa
781916-1	70210	Īrmeizojā	02.01.2019	01000300038	Inta Robļevska	Ilga Peļpiņa
782054-1	20104	Īrmeizojā	02.01.2019		Guntars Indriķsons	Jolita Gromska
782325-1	20134 reģistrācija	Īrmeizojā	02.01.2019	84440020087	Mārtins Gūmanis	Vladimirs Mjadjuta
782325-1	20134	Īrmeizojā	02.01.2019	84440020087	Mārtins Gūmanis	Vladimirs Mjadjuta
782448-1	20134 ievērtēšana	Īrmeizojā	02.01.2019	80440050038	Nora Vīdmane	Dorota Kabā
782531-1	20134 reģistrācija	Īrmeizojā	02.01.2019	82900020012	Marija Nikolajeva	Sandra Buļmane

Kontrolējamie datu lauki	Konstatēta neatbilstība
Izveidots jauns NĪ un dati aktualizēti atbilstoši subjekta iesniegumam	<input type="checkbox"/>
Apliecinājums par datu reģistrāciju sagatavots un pievienots PAIS	<input type="checkbox"/>
Sagatavota un pievienota PAIS informatīvā vēstule zemes īpašniekam, ja uz zemes tiek reģistrēta citai personai piederoša būve	<input type="checkbox"/>
Zemes un būves īpašums	
Jaunizveidotajam īpašumam reģistrēts īpašnieks un persona sinhronizēta ar IER vai UR	<input type="checkbox"/>
Kadastra subjektam piekritošās domājamās daļas atbilst dokumentiem, ZG	<input type="checkbox"/>
Aizpildīts nodaļuma numurs	<input type="checkbox"/>
Jaunizveidotajam īpašumam reģistrēts nosaukums atbilstoši pašvaldības lēmumam	<input type="checkbox"/>
Dokumentu kartīnā reģistrēti iesniegtie dokumenti	<input type="checkbox"/>
Zemes vienībai sagatavots atsevišķs zemes robežu plāns	<input type="checkbox"/>
Būves piederības statuss atbilst dokumentiem, ZG	<input type="checkbox"/>
Būve piesaistīta uz pareizās zemes vienības, piesaistītas/atsaistītas citas zemes vienības	<input type="checkbox"/>
Būve attēlota telpiskajos datos	<input type="checkbox"/>
Būves īpašums	
Jaunizveidotajam īpašumam reģistrēts īpašnieks un persona sinhronizēta ar IER vai UR	<input type="checkbox"/>
Kadastra subjektam piekritošās domājamās daļas atbilst dokumentiem, ZG	<input type="checkbox"/>
Aizpildīts nodaļuma numurs	<input type="checkbox"/>
Dokumentu kartīnā reģistrēti iesniegtie dokumenti	<input type="checkbox"/>
NĪ sastāvs reģistrēts atbilstoši subjekta iesniegumam	<input type="checkbox"/>
Būves piederības statuss atbilst dokumentiem	<input type="checkbox"/>
Būvei ar statusu "40 - lētīlps tēku (būvju) īpašuma sastāvā" dzēsts subjekts	<input type="checkbox"/>
Būvei piesaistīta adrese	<input type="checkbox"/>
Reģistrēti būves dokumenti, tai sk. piederību apliecināšie dokumenti	<input type="checkbox"/>
Būve piesaistīta uz pareizās zemes vienības, piesaistītas/atsaistītas citas zemes vienības	<input type="checkbox"/>

Kadaster, the Netherlands

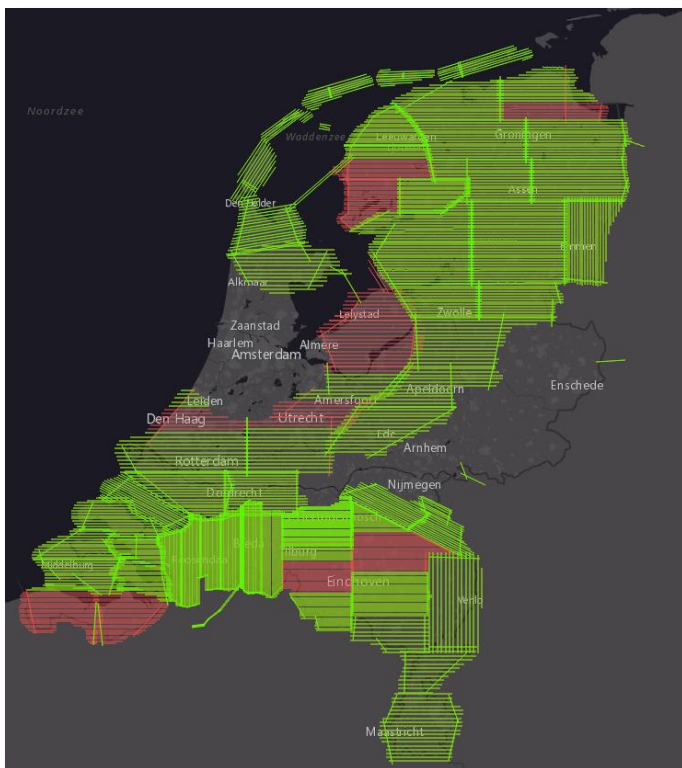
April 2019



- **News concerning Data Quality and Quality Management**
 - Continuous development of our Quality-dashboards with new indicators
 - Quality management of Kadaster quotation process: 5% quality check
 - Improving streetnames in Key Register Topography by using Key Register Addresses and Buildings, OpenStreetMap and Roads data.
90% of names in Key Register Addresses and Buildings are now in the Key Register Topography.

Kadaster, the Netherlands

April 2019



Aerial imagery partnership (BM4)

Partnership between many (semi-) government parties for collecting aerial imagery.

Higher goal:

- Common operational picture
- Collect once – use multiple times

Long-term vision: aerial imagery as a common provision

Progress of capture of aerial imagery 2019



<http://hwh.maps.arcgis.com/apps/MapJournal/index.html?appid=07ab4a111a2b4f4f880ca0427b2e7e6b>

Instituto Geográfico Nacional (IGN), Spain

From December 2018 to April 2019

- **News concerning Data Quality**
 - We continue working on developing automatic quality control in the new production environment with ArcGIS. It is called BDIG environment (Geospatial Information Databases) and involves data from Transport Network (RT) and National Topographic Database (BTN).

Instituto Geográfico Nacional (IGN), Spain

From December 2018 to April 2019

- **News concerning quality management**
 - We continue working on the integration between InciGeo (tool for jobs management) with the BDIG environment.
 - Details of the workflow.
 - Assure data logical consistency before update the database.
 - Evaluate operators.

Instituto Geográfico Nacional (IGN), Spain

From December 2018 to April 2019

- Any other news that would be of interest for Q-KEN?
 - How visualization / dashboards is progressing in your organisation?
 - Nothing to remark
 - Improving integration of information from other sources
 - Downloading changes via WFS + conflation + automatic data consistency (for Cadastral data)
 - Geocoding (for location of public services)
 - Other conventional ways (for other information, e.g. natural protected areas, ways, cattle route...)
 - New models for National Topographic Database
 - Quality of Services
 - Performance $t < 5$ sec
 - Availability $> 99\%$
 - Capacity OK

	WFS / WCS	WMS	WMTS	ATOM
Hidro Physical Waters	OK	OK		
Transport Network	OK	OK		
Addresses	OK	OK		
Elevation	OK	OK	OK	
Land Use	OK	OK	OK	
Land Cover	OK	OK	OK	
Geographical name	OK	OK		OK
Administrative Unit	OK	OK		OK
Orthoimagery		OK	OK	

Instituto Geográfico Nacional (IGN), Spain

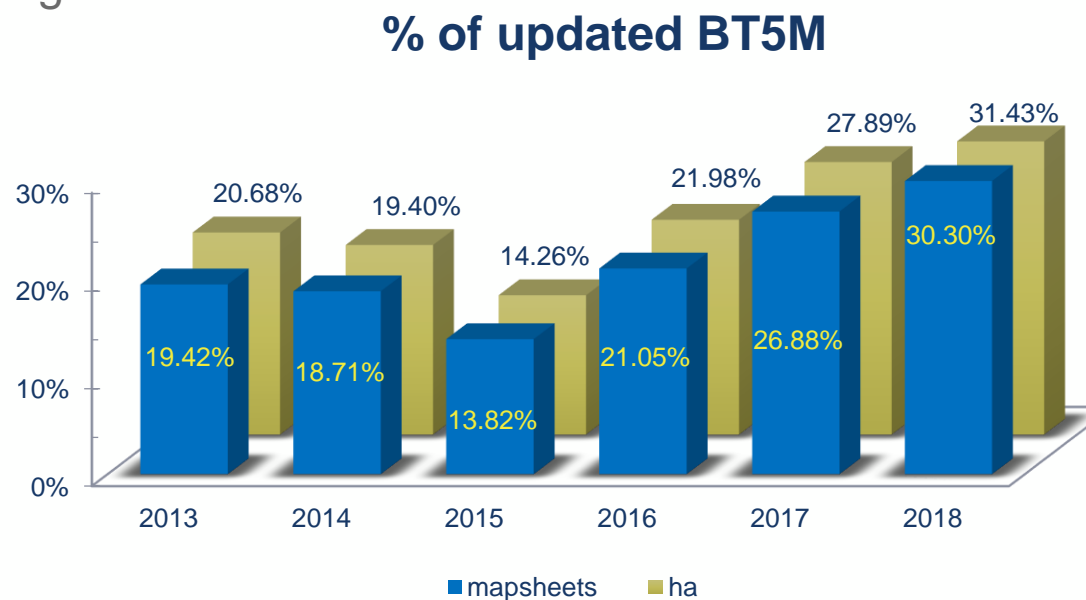
From December 2018 to April 2019

- Topic I can offer for next webinar
 - National Topographic Database of Spain, new conceptual models.

Cartographic and Geological Institute of Catalonia, Spain From February 2018 to March 2019

News concerning data quality

- Different updating speeds related to changes
 - Improving customer's satisfaction
 - Increasing production rate



Cartographic and Geological Institute of Catalonia, Spain

From February 2018 to March 2019

News concerning quality management

- To state a bidirectional customer interaction
 - Understand their needs and expectations
 - Detect, define and promote use cases
 - Provide support
- Interaction between the Quality and the Information Security Management Systems
 - Definition and implementation processes

Lantmäteriet – The Swedish mapping, cadastral and land registration authority

From November 2018 to April 2019

- **New quality tutorial SIS – Swedish Standard Institute**
A swedish quality tutorial for ISO 19157
- Purpose with this tutorial is to better understand the international standard for quality of geodata SS-EN ISO 19157:2013
 - About standards for Quality
 - Quality concepts
 - Quality control for geodata
 - Working processes

<https://www.sis.se/relevantastandarderfrgeodataenvgledning/Om19157/om19157-20/>

relevanta standarder för geodata - en vägledning

modellera geodata

specificera geodata

producera geodata

beskriva geodata

illgängliggöra geodata

illämpa geodata

örteckning över standarder och andra publikationer

handledning för datakvalitet

- Om kvalitetsstandarder
- Kvalitetsbegrepp inom ISO 19157
- Kvalitetsstyrning geodata
- Arbetssätt och steg i datakvalitetsarbete

Arbetsätt - Ställa krav - Användarens behov och insamlingsmetoderna påverkar

Arbetsätt - Ställa krav - Kvalitetskrav enligt SS-EN ISO 19157 - Datakvalitet

Arbetsätt - Ställa krav - Krav per datakvalitetsegenskap

Arbetsätt - Ställa krav - Att formulera krav och sätta mått

Arbetsätt - Ställa krav - Olika typer av mått

Arbetsätt - Ställa krav - Acceptansnivå på uppfyllelse av krav

Arbetsätt - Ställa krav - Datakvalitetsomfattningar och krav

Arbetsätt - Ställa krav - Exempel på krav och mått

Arbetsätt - Ställa krav - Vanliga kvalitetsmått

Arbetsätt - Ställa krav - Om Aktualitet

Arbetsätt - Måta - Roller och kompetenser

Arbetsätt - Måta - Ordningssätt vid kvalitetsundersökningar

Arbetsätt och steg i datakvalitetsarbete

Denna del av vår handledning är inte färdigställd men vi kommer att fylla på med mer information om de olika delarna som vi vill beskriva. Vi kommer att beskriva datakvalitetsarbetet som en process, även fast det kan vara olika personer inblandade i olika delar av processen.

[i](#) [t](#) [w](#) [m](#)

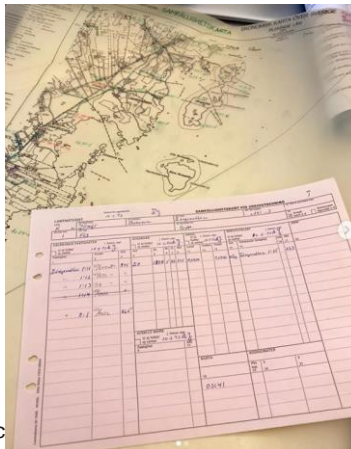
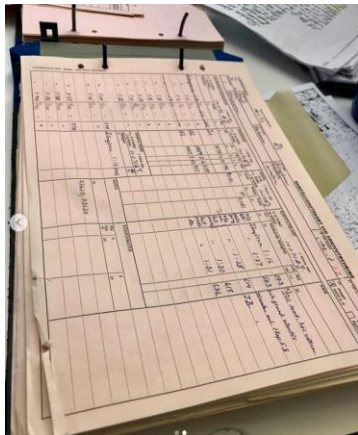
Processen kommer då bestå av flera steg

1. Ställa krav och sätta mått
 - Användarens behov och insamlingsmetoderna påverkar
 - Kvalitetskrav enligt SS-EN ISO 19157 - Datakvalitet
 - Krav per datakvalitetsegenskap
 - Att formulera krav och sätta mått
 - Olika typer av mått
 - Acceptansnivå på uppfyllelse av krav
 - Datakvalitetsomfattningar och krav
 - Exempel på krav och mått
 - Vanliga kvalitetsmått
 - Om Aktualitet
2. Måta
 - Roller och kompetenser
 - Ordningssätt vid kvalitetsundersökningar
 - Samband och förhållandet mellan olika kvalitetskategorier
 - Måtmeter
 - Frakvens för mätning
 - Urval vid mätning
3. Redovisa
 - Redovisat datakvalitet i metadata
 - Förklara tolkningen av kvaliteten för användarna

För varje delmoment har vi försäkt kortfattat beskriva lite om vad vi ser att ett sådant steg innehåller och någon tanke kring respektive innehållsdel.

Lantmäteriet – The Swedish mapping, cadastral and land registration authority

- The office in Kiruna will expand with 22 employees, totally to 53 employees (IT, customer service), We ´ve got increased appropriation from Government depending on close-down another authority.
- KUF – Quality enhancement in Property register and Cadastral Index Map
 - 22 employees of 53 will work with KUF
 - Quality development for better quality in property information, joint property unit, rights etc.
 - Today around 70 persons working 25- 50 % and 15 persons close to 100 %, has been in operation for many years
 - They are divided into 4 working groups in 15 offices (included Kiruna)
- Test: AI project, reads and translate, digital



Bundesamt für Landestopografie swisstopo , Switzerland

From 12 2018 to 04 2019

- News concerning Data Quality
 - Switzerland has its own data exchange format Interlis. All government geo vector data has to be described in Interlis. There is now a new open source project with a schema and data checker.
<https://github.com/claeis/ilvalidator> There is also a test-suite <https://github.com/geoadmin/suite-interlis>

Bundesamt für Landestopografie swisstopo , Switzerland

From 12 2018 to 04 2019

- We have now a ISO 9001 / 27000 certified metadata management prozess

The metadata management process is responsible for the Federal Spatial Data Infrastructure FSDI geometry data and at the same time a hub for geometry data in the National Spatial Data Infrastructure (NGDI). The metadata management process comprises the integration, administration and publication of geometadata. For this purpose, swisstopo (KOGIS) operates the [geocat.ch](https://www.geocat.ch) application. The metadata management process also includes the definition of standards for geometadata valid in Switzerland.

Proposals for presentations at next plenary/webinar

Subject	Organisation	Voting
Cadastral data Quaity increase	Czech NMA	3
Results of the Quality management in the National topographic database of Finland	NLS, Finland	3
Quality standard ISO vs INSPIRE	BKG, Germany	15
New production concept for topographic plans	LGIA, Latvia	3
Aerial imagery partnership	Kadaster, Netherlands	5
Swedish quality tutorial for ISO 19157	NLS, Sweden	8
National Topographic Database of Spain, new conceptual models	IGN, Spain	1
ESRI Quality control	SwissTopo	11
Result of ongoing change detection	NLS, Sweden	11
Semantic segmentation to produce land use	IGN France	6



Thank for the attention!

