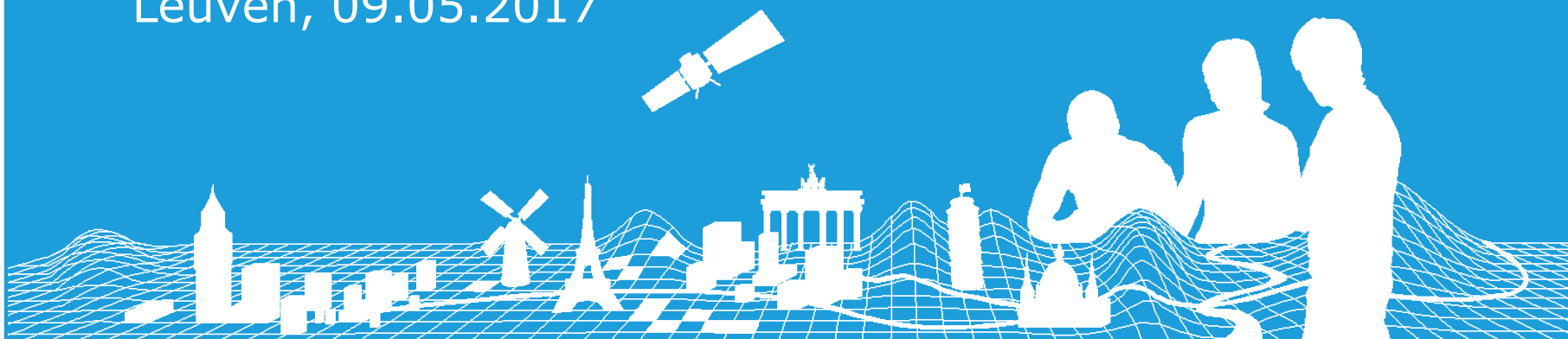


EuroBoundaryMap and EuroRegionalMap

Regine Elling

Extraordinary General Assembly 2017

Leuven, 09.05.2017



Agenda

- Review production year 2016
- Production year 2017
- EuroBoundaryMap
- EuroRegionalMap
- Outlook



Review production year 2016



- New Production Management Team
 - Jörgen Spradau (EBM Production Manager)
 - Regine Elling (ERM Production Manager)
 - Alexander Reichelt (ERM Technical Manager)
- Change of Regional Manager of group C
 - Dovilė Rusonytė (Lithuania)
- New producer
 - Directorate-General for Mobility and Transport (DG MOVE) → TEN-T network
- New Production Management System (PMS)



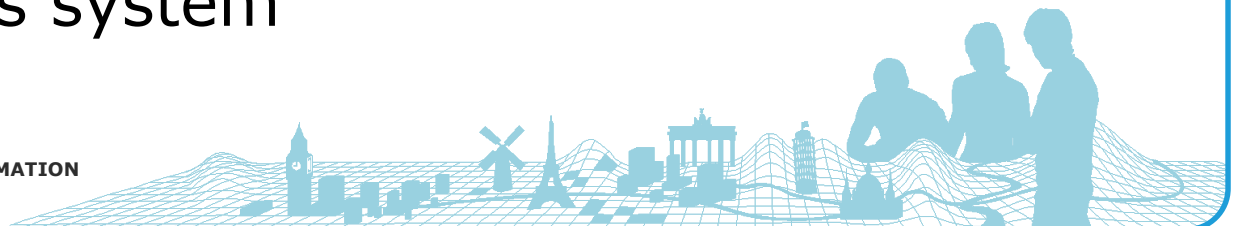
Review production year 2016

- Delivery to Eurostat by 20th January 2017
→ EBM v11 and ERM v10
 - EBM and ERM: Lookup table for country codes
 - ERM:
 - Updated ERM themes: BND, TRANS and POP
 - Updated TEN attribute (DG MOVE)
 - Change in handling of boundary theme for Serbia and Kosovo
- Provision of EBM v11 and ERM v10.1 and quality assessment to data producers
- Remaining task
 - Provide EBM v11 and ERM v10.1 to public



Production year 2017

- Production Plan was sent to data producers in February
 - Combined work plan for EBM, ERM and EGM
 - Describes all deliverables for data producers
- PMS
 - Update contacts
 - Information of production environment
 - National Production Plan 2017
 - Plan that data producer provide Metadata through this system



Production year 2017

EBM, ERM and EGM Production Management System

Hello, BKG [Logout](#)

[home](#) [poll](#) [documents](#) [meetings](#) [actionlist PMT](#) [overview](#) [settings](#) [contact](#)

EG Contact/Product Database. organize the contacts and products

Select a country:

Germany ()

[mail to Region Coordinators](#)

[mail to all NMCA's](#)

EG Country Code	ISO Country Code	EU Country Code	Name original	Name english	Name english short	Comment
DE	DE	DE	Deutschland	Germany	Germany	

NMCA	Name english	EBM	ERM	EGM
BKG	Federal Agency for Cartography and Geodesy	<input checked="" type="checkbox"/>	<input checked="" type="checkbox"/>	<input checked="" type="checkbox"/>

[NMCA](#) [EBM - Country Quality Doku](#) [EBM - Version Doku](#) [ERM - Delivery Status](#)

[mail all contacts of NMCA](#)

NMCA: BKG EBM: ☒ ERM: ☒ EGM: ☒

ERM Region: Group A (The Netherlands (Ben))

Name original: Bundesamt für Kartographie und Geodäsie

Name english: Federal Agency for Cartography and Geodesy

Web: www.bkg.bund.de

Comment:

1 2

address 1: Richard-Strauss-Allee 11

address 2:

address 3:

postalcode: 60598

city: Frankfurt am Main

comment:

Country within EG Product

EBM ☒ ERM ☒ EGM ☒
☐ VMap Data

[contact persons](#) [production infos](#) [national production plan](#) [ERM-Regions Graphic](#)

1 2 3 4 5 6 7 8 9

[mail to this contact](#)

Title: Ms

Firstname: Regine

Lastname: Elling

Department: Referat GI3

Jobtitle:

calling code: +49

location: Frankfurt am Main, Richard-Strauss-Allee 11

phone: 69 6333 346

mobile:

fax: 69 6333 441

mail_1: regine.elling@bkg.bund.de

mail_2:

EBM role:

ERM role: National production coordinator (POC)

EGM role:

ERM Region Coordinator:

contact from: 2016 (YYYY)

contact until: (YYYY)

comment:

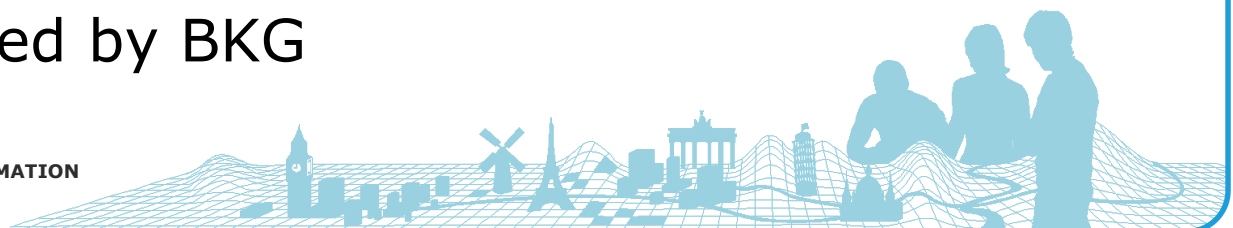
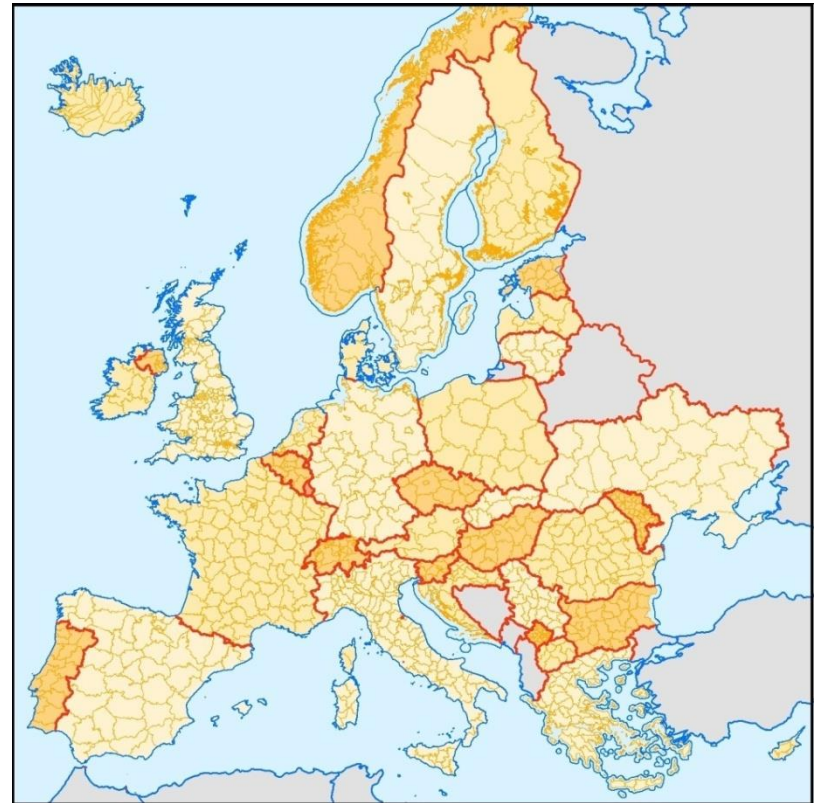
EuroGeographics

CONNECTING YOU TO THE
**AUTHORITATIVE GEO-INFORMATION
FRAMEWORK FOR EUROPE**



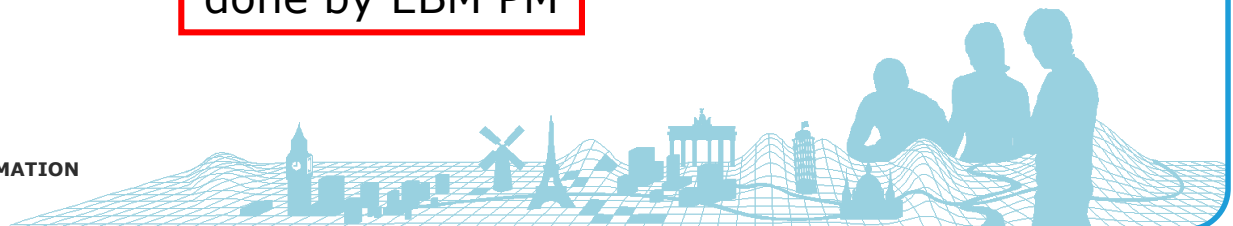
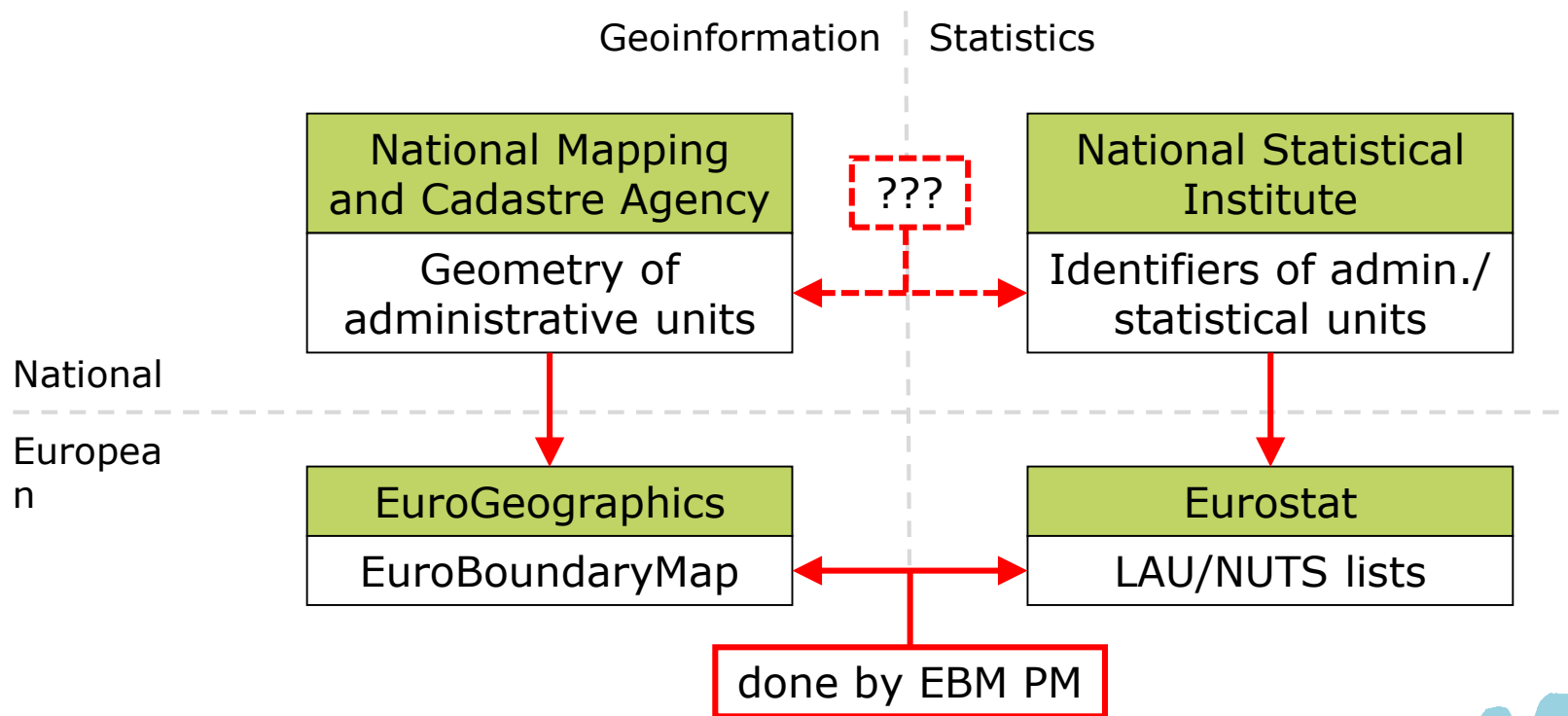
EuroBoundaryMap (EBM) overview

- Up-to-date geometry, names and codes of all administrative units for 41 European countries
- Derived LAU- and NUTS regions based on the linkage to the statistical codes used by National Statistics Institutes and Eurostat
- Yearly update
- Reference date for EBM v12: **01.01.2017**
- Product managed by BKG



EBM matching with statistical data

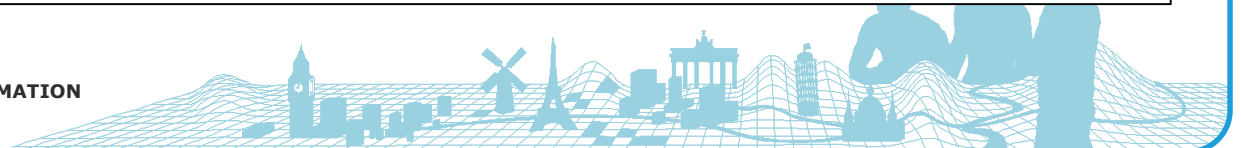
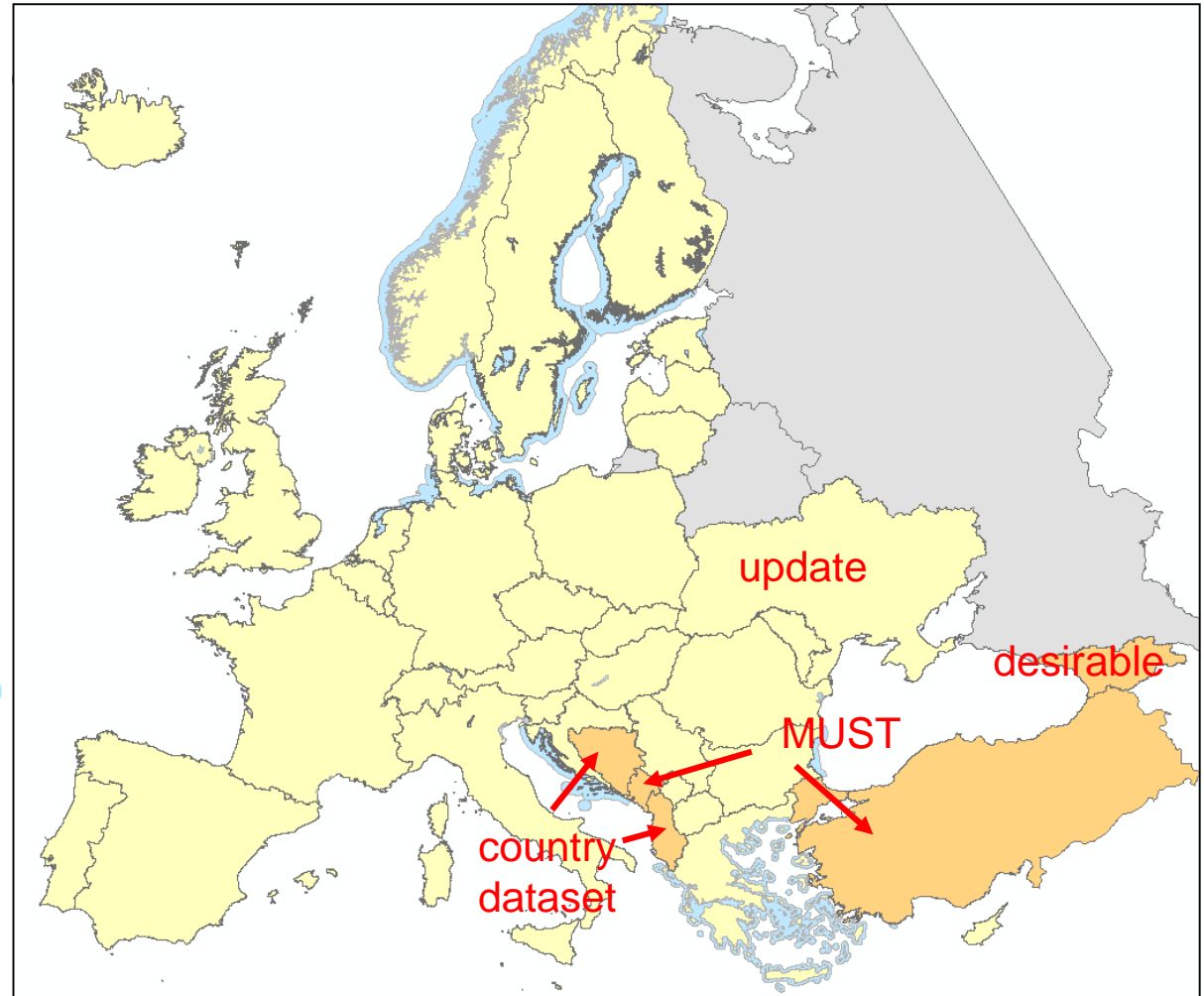
- Exact matching of geometry of administrative units (EBM) with statistical data is essential



EBM coverage extension

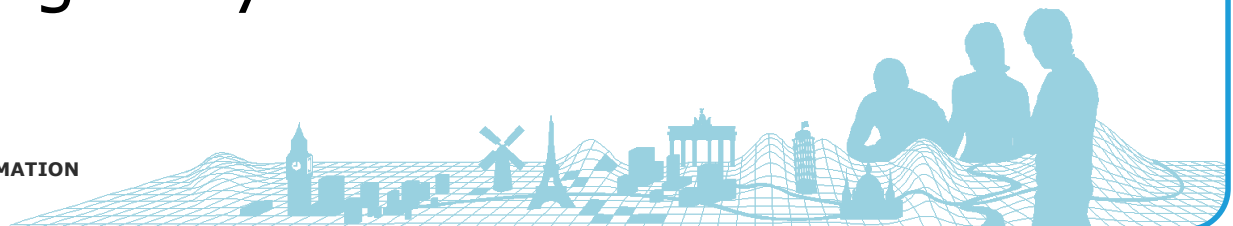
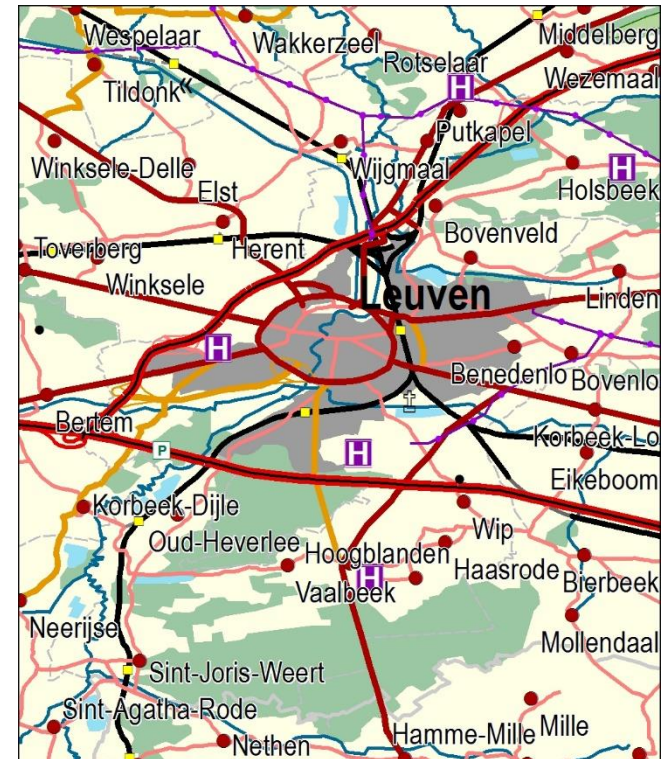
Complete European

- ☐ ☒ possible EBM extension
- ☐ ☒ out of scope
- ☐ ☒ EBM
- ☐ ☒ <all other values>



EuroRegionalMap (ERM) overview

- Topographic dataset 1:250,000
- Themes
 - Boundaries (BND)
 - Hydrography (HYDRO)
 - Named Location (NAME)
 - Miscellaneous (MISC)
 - Settlement (POP)
 - Transport (TRANS)
 - Vegetation and Soils (VEG)
 - [Points of Interest (POI)]
- Yearly update
- Product managed by BKG

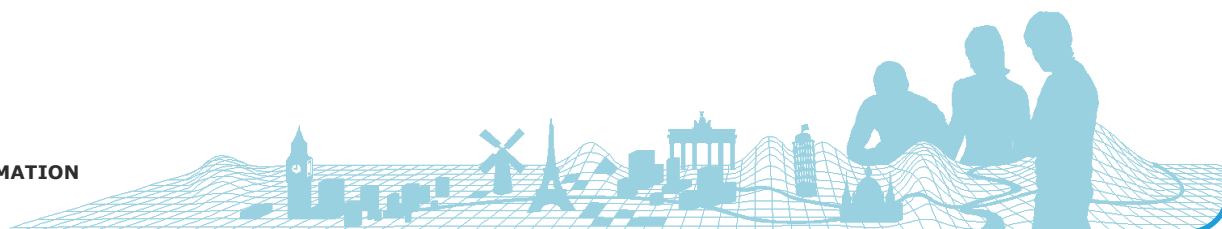


ERM Production 2017 – New groups



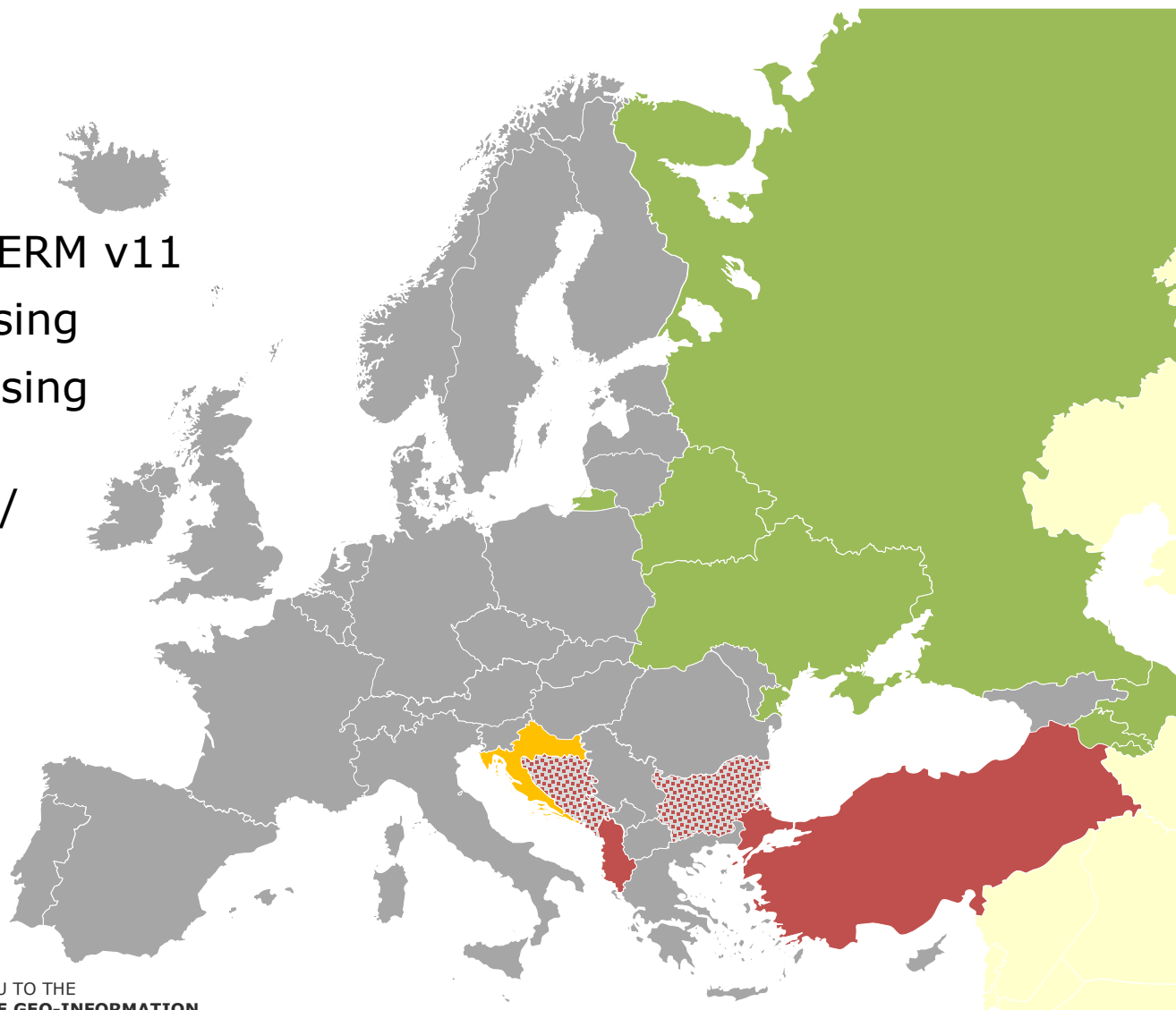
ERM Production 2017

- Changes in data specification and data model for ERM v11 (TEN) → FTP
- Revised Edge Matching Rules
- From now on numbering of documents correspond to ERM release (e.g. ERM v11 Technical Guide for ERM v11) → PMS
- BND
 - Consider consistency with EBM update
- Real update
 - HYDRO: Maintain TEN attributes
 - MISC
 - NAM

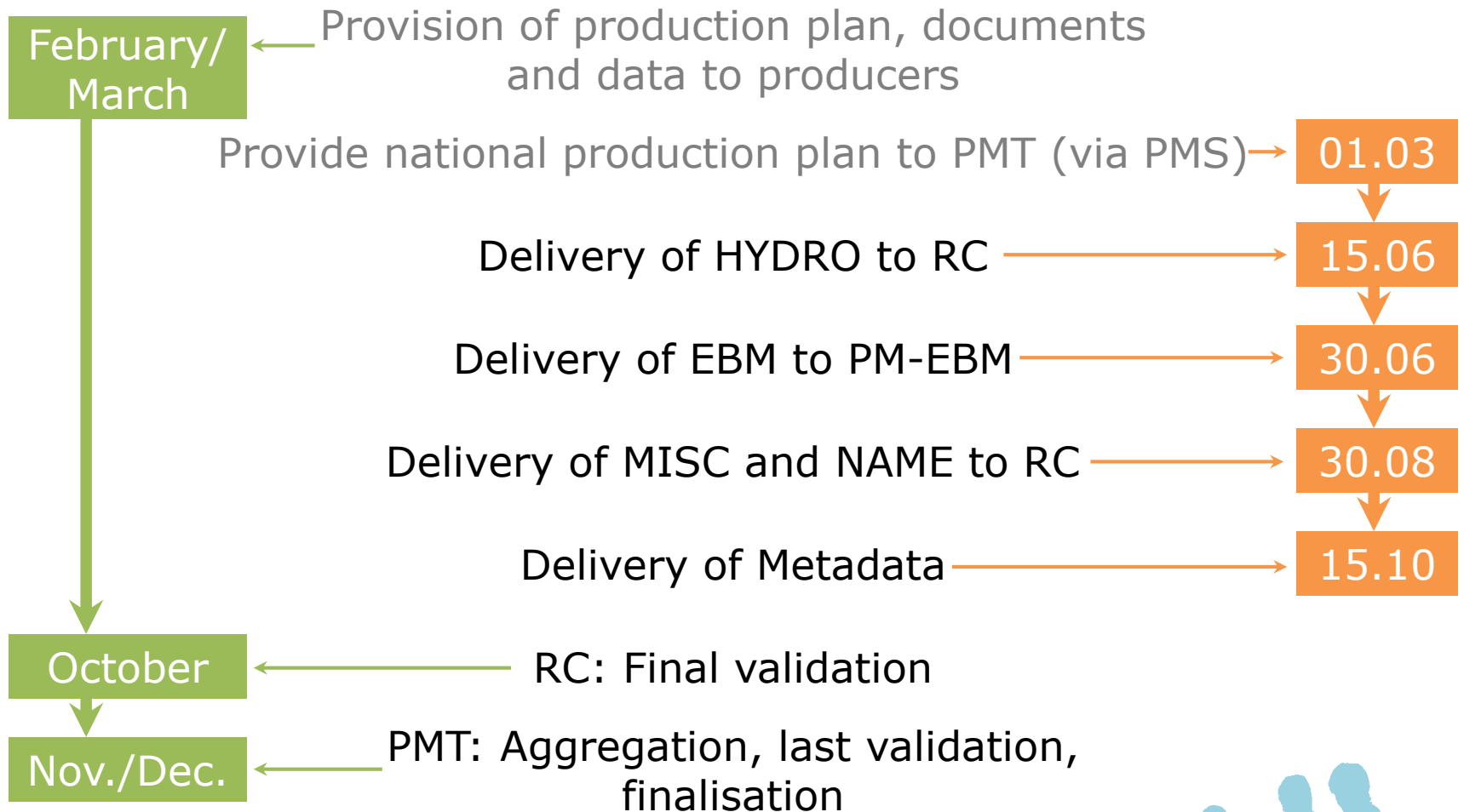


Geographical extent of ERM v10.0/v10.1

- ERM v10
- Expected for ERM v11
- Required missing
- Desirable missing
- Vmap Level 1
(out of date) /
very old data
→ national
data
required

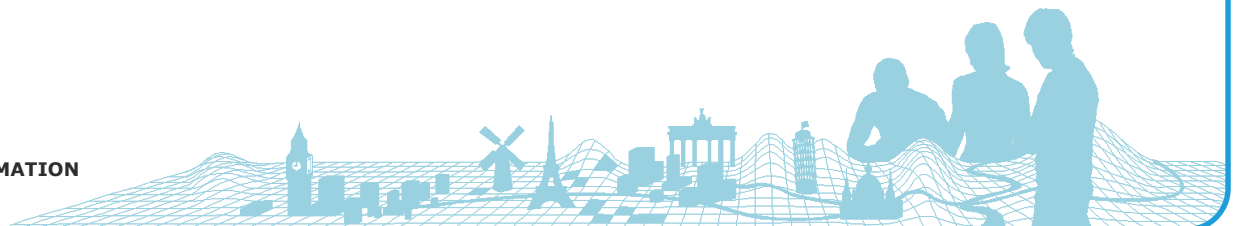


Timetable for Production of EBM and ERM 2017



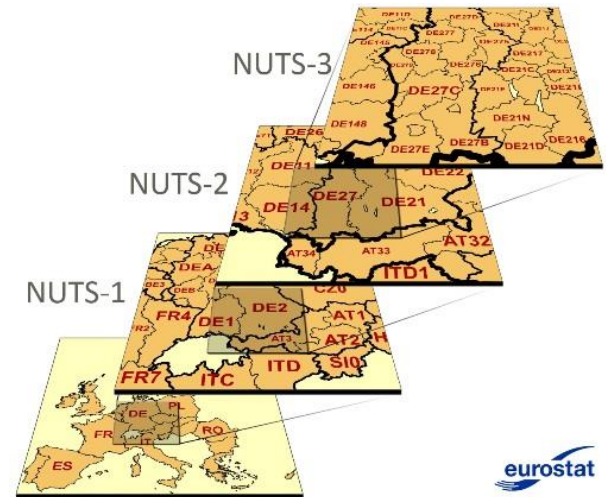
Outlook

- Future of EBM and ERM depending on:
 - Willingness and resources of EuroGeographics and its members to produce the data products
 - Sufficient number of customers/users
- General ideas for EBM and ERM:
 - Streamline production
 - Create more synergies between ERM and EBM
 - Improve quality management
 - Coverage extension
 - Implementation of Inspire-ID for ERM



NUTS3

- Request from Eurostat:
NUTS3 at 1:1,000,000
as OpenData



Strategic point of view

- Under our control
- Protection of our members data and our brand
- Consideration as additional theme within OpenData product EGM

Technical point of view

- Investigations are on the way to ensure data quality
- Part of current production cycle
- Use of existing generalisation rules



Thank you for your attention



Contact:

Regine Elling

Federal Agency for Cartography and Geodesy

Richard-Strauss-Allee 11

60598 Frankfurt am Main / Germany

Email: ebm@bkg.bund.de

