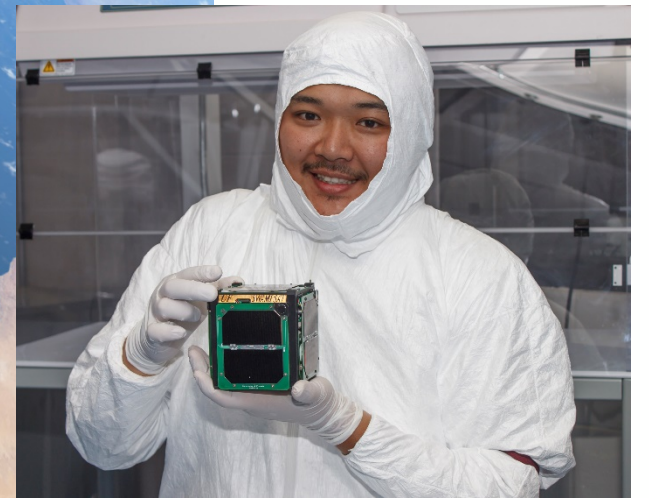
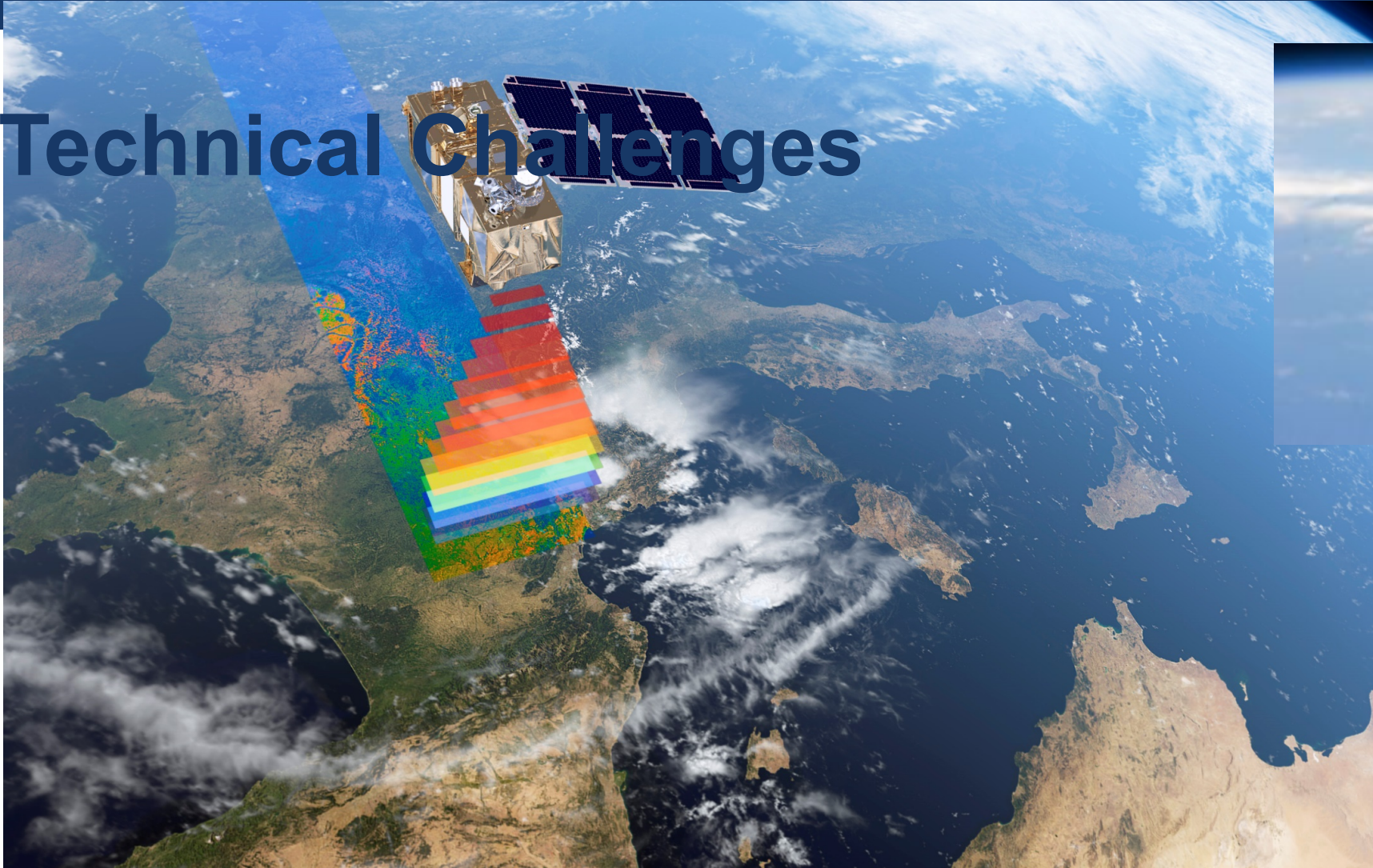


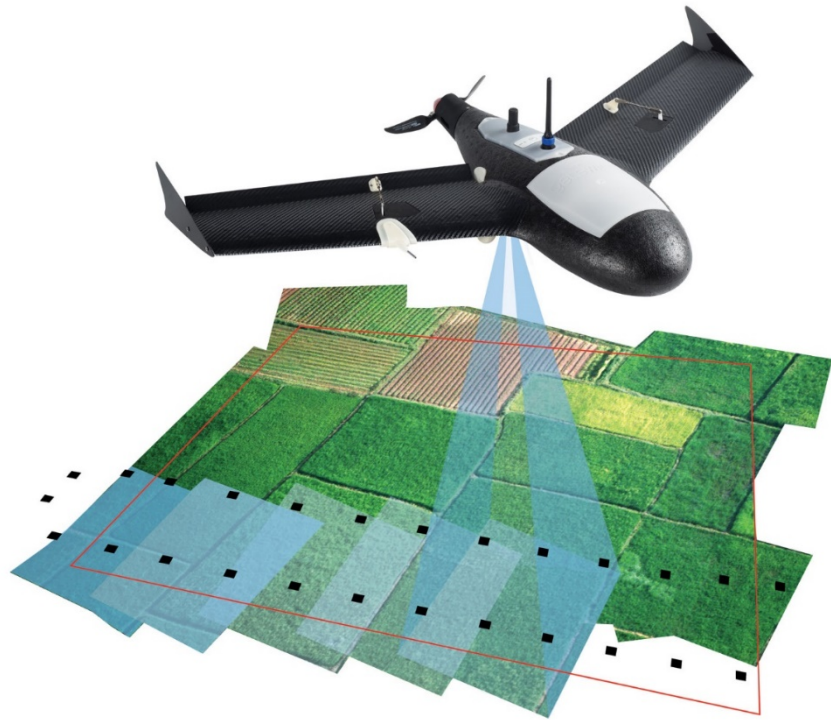
Look Ahead: 2018 General Assembly

Challenges or Opportunities?

Technical Challenges





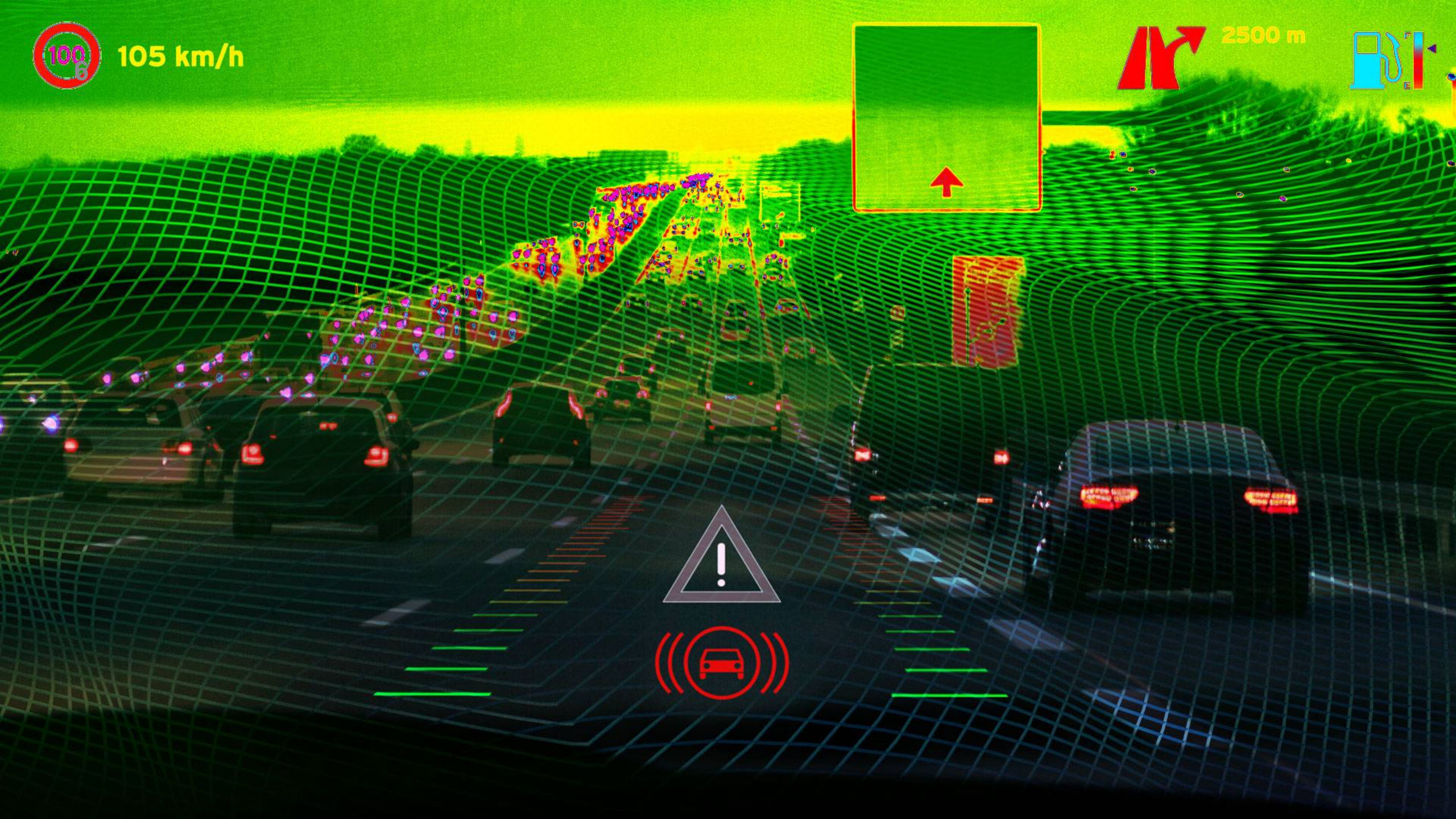
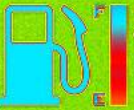




105 km/h



2500 m



Legal Challenges

Diverse legal frameworks



INSPIRE – what is the future?



Policy Challenges

Diverse European Policy environment

No coherent European policy home for geospatial

No coherent European policy for geospatial

Organisational Challenges



OpenStreetMap

COLLABORATIVE RESEARCH

Preventative Health ASTHMA MANAGEMENT Quality of Life Dental Research
 AMBULATORY BLOOD PRESSURE CYSTIC FIBROSIS School-based Interventions Device Research
 Smoking Cessation Research Regeneration Treatment Improvement

Regenerative Medicine TRAUMATIC INJURIES Survival Probability
 Degenerative Diseases CLINICAL MANAGEMENT Community-based Participatory Research
 SURVIVAL PROBABILITY Sickle Cell Disease Nursing Research
 Bio-Marker Research Cardiovascular Complications DIABETES PREVENTION
 Psychiatric Disorders Mechanisms of Schizophrenia Cancer Awareness

Renal Disease Treatment Safety and Efficacy
 ACUTE KIDNEY INJURY
 Cardiac Rehabilitation

STROKE Therapy Development
 Improving Outcomes
 Epigenetics
 Tumor Genetics
 Clinical Procedure Evaluation

Cancer Research



Challenges going forward

Delivering to Customers

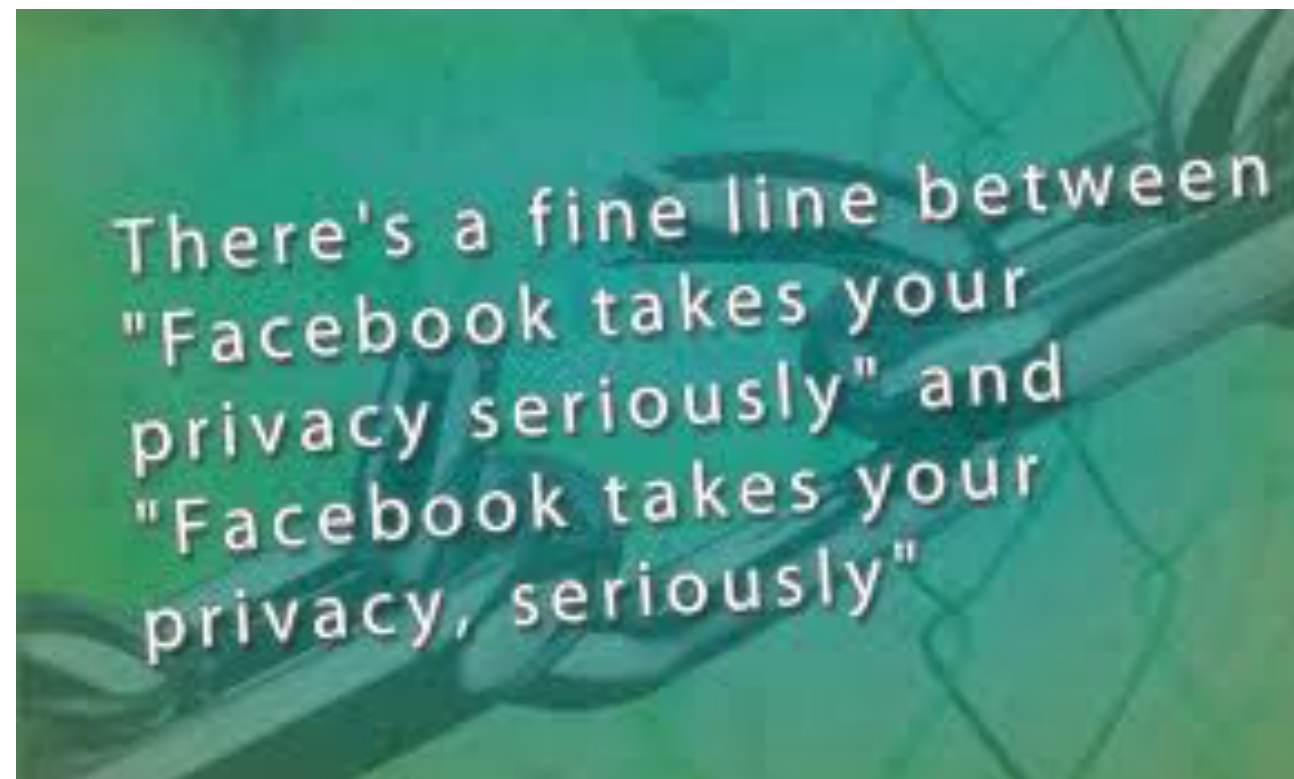
Operational Data and Services

Eurostat Contract

Core Reference Data

Securing an ELS partner

“Trusted Authoritative Data” – what do we mean by Authoritative?











Resolution A/RES/70/1

Transforming our world: the 2030 Agenda for Sustainable Development

- **Authoritative Data** – a ‘**trusted**’ source
- The importance for such data is evident in the UN’s 2030 Agenda for Sustainable Development
- recognises that **national ownership** is key to achieving sustainable development,
- As a principle, global review of progress will be primarily based on national **official data sources**.
- Will exploit the contribution to be made by a wide range of data, including earth observation and **geospatial information**, while ensuring national ownership in supporting and tracking progress.



General Assembly
Grandior Hotel, Prague, Czech Republic
08-10 October 2018



Key Messages

Trust

Authoritative data

Meeting the needs of the user

Service delivery

General Assembly

Held in Prague from **08-10 October 2018**

Hosted by Czech Office for Surveying, Mapping and Cadastre.

Opens with an informal welcome reception Sunday 07 October 2018

General Assembly begins Monday 08 October

Concludes Lunchtime 10 October

Outline - Day 1

Welcome & Opening of the General Assembly

Keynote presentation

The perception of trust

Authoritative Data

What makes data 'authoritative', is that the same as 'official'?

Cultural Evening

Outline - Day 2

Meeting user requirements in the Commission

Meeting commercial user requirements - Understanding the value chain of users in a digital world

Delivering Operational Services - Case Study

ELS

Gala dinner – Prague Castle



Outline Day 3 – Formal Business

Actions, Accomplishments & Achievements - Management Board Report to the 2017 General Assembly

The 2019 Operating Plan & Budget, including subscriptions

Election of Management Board members

Election of EuroGeographics President

Finish 12.15 on 10th October 2018

Look Forward to seeing you in Prague

