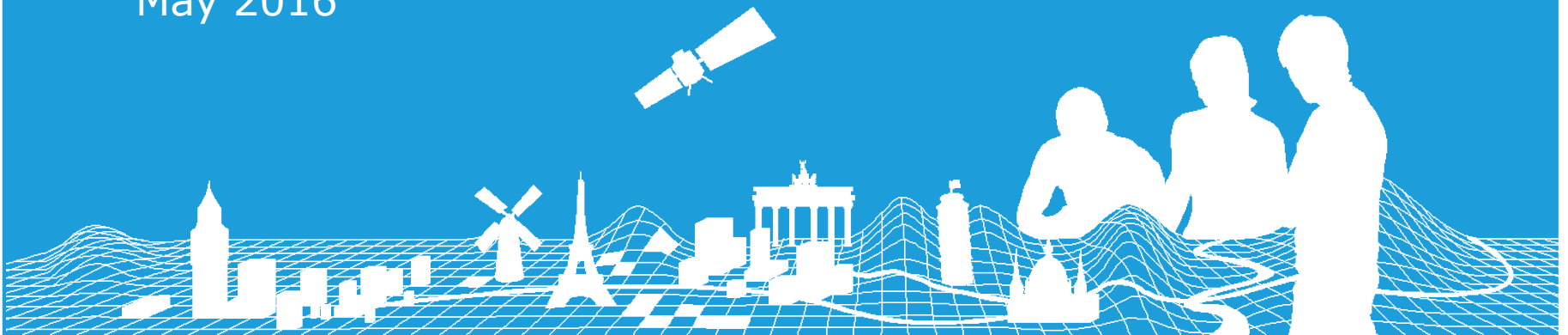


# EuroGeographics Pan European products

Angela Baker

Sales, Marketing and Channel Manager, EuroGeographics

May 2016



# Thank you

- Thank you for your data
- Customer needs
  - Authoritative data for decision making not analysis
  - Accurate data
  - Increased coverage
- So we continue to need your data



# EuroGeographics Customers



**EuroGeographics**

CONNECTING YOU TO THE  
**AUTHORITATIVE GEO-INFORMATION  
FRAMEWORK** FOR EUROPE



# EuroGeographics Customers

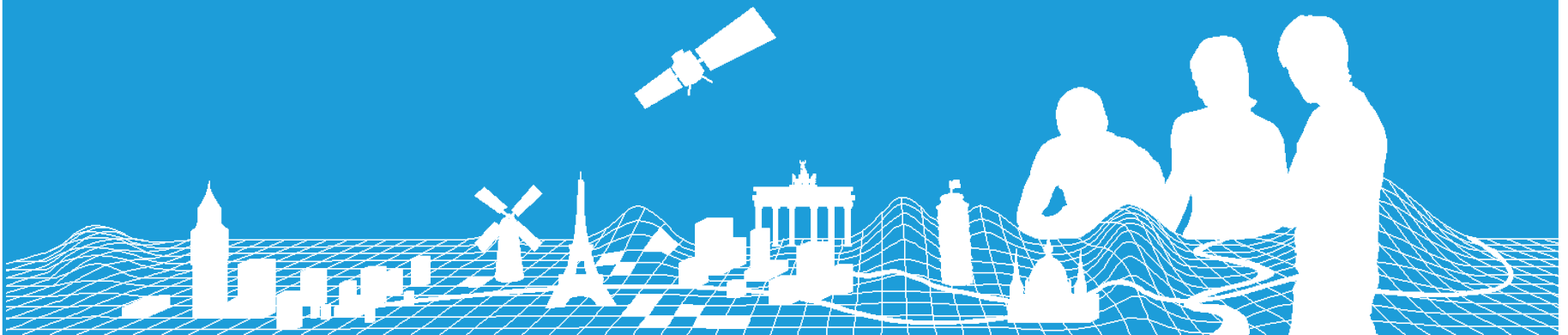
Distributor	Product	Customer 2015	Coverage 2015
EGHO	EBM	Eurostat	Europe
EGHO	EBM	European Central Bank	Europe
EGHO	EBM	PBL Netherlands	Europe
EGHO	EBM	Syngenta	Europe
EGHO	EBM	TNS Global	Europe
DDS	EBM	Centre of Regional Development of the Czech Republic	Poland, Austria, Slovakia, Germany
Experian	EBM	VAR	Europe
Apple	EBM	Apple	Europe
GeoVille	EBM	CEPS Luxembourg	Europe
GeoVille	EBM	BeschA Germany	Europe
EGHO	ERM	Eurostat	Europe
EGHO	ERM	PBL Netherlands	Europe
EGHO	ERM	Spatial Dept Flanders	Europe
EGHO	ERM	Bavarian Agency for Digitisation, High-Speed Internet and Surveying	Europe
EGHO	ERM	Skydemon	Europe
EGHO	ERM	Dutch Military	Europe
EGHO	ERM	Polish Military	Europe
Geodan	ERM	European Railway Agency	Europe
GeoVille	ERM	MDDI	Europe
GeoVille	ERM	BeschA Germany	Europe
EGHO	EuroDEM	Landesamt für Natur, Umwelt und Verbraucherschutz NRW	Areas of Germany, The Netherlands and Belgium
EGHO	EuroDEM	RMS	Central Europe
JBA	EuroDEM	Allianz	Poland, Slovakia & Slovenia
JBA	EuroDEM	RSA	Poland, Slovakia & Slovenia
JBA	EuroDEM	Confidential	Poland, Slovakia & Slovenia
Eastview	EuroDEM	KatRisk LLC	Europe
Cartographic	EuroDEM		Europe
EGHO	EuroDEM	JBA	Europe

# EuroGlobalMap – Open Data

- Excellent number of users
- Nearly 5000 unique downloads
- Over 1600 Educational Users
- Downloads not slowing down!



# Changes in the Production Process and the Production Team



# Changes to the Production Process

- Nov 2015: PSCG used our annual meeting to have a brainstorm
- Aims:
  - Review how production had grown organically over the last few years
  - Identify the pressure points by product and inter-product dependencies
  - Look at ways these could be solved
  - Identify a more streamlined process
- To move to a new production process will take time especially if we want to change some of the timings within the process
- To facilitate this, any new process does not start fully until January 2017.
- There needs to be an interim period of transition in 2016
- Technical producers were briefed in a webinar in March
- We will meet physically in Sept in Amsterdam with the technical producers on the new production process for 2017



# Changes to the production team

- Due to changes in staff responsibilities within the Production team we entered into a discussion with the Federal Agency for Cartography and Geodesy (BKG)
- BKG have agreed to take over the Production Management for both EuroBoundaryMap and EuroRegionalMap from May 2016



# Thank You

- ERM
  - Nathalie Delattre, NGI Belgium
  - Anja Hopfstock, BKG
  - Sonja Werhahn, BKG
- EBM
  - Marcus Bruehl, BKG

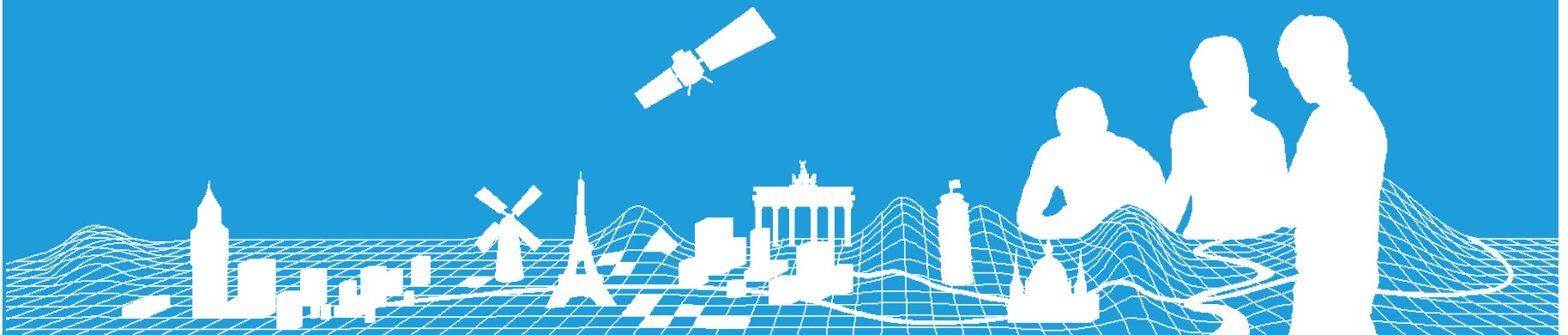


# Production Management Team Changes

- EBM
  - New contact is Jörgen Spradau
- ERM
  - New contacts are
    - Regine Elling, Production Manager
    - Alexander Reichelt, Technical Manager



# Signing of new production management contract



# Thank You

Any questions please contact me:

Angela Baker

[angela.baker@eurogeographics.org](mailto:angela.baker@eurogeographics.org)

+44 (0) 7703 569765

