

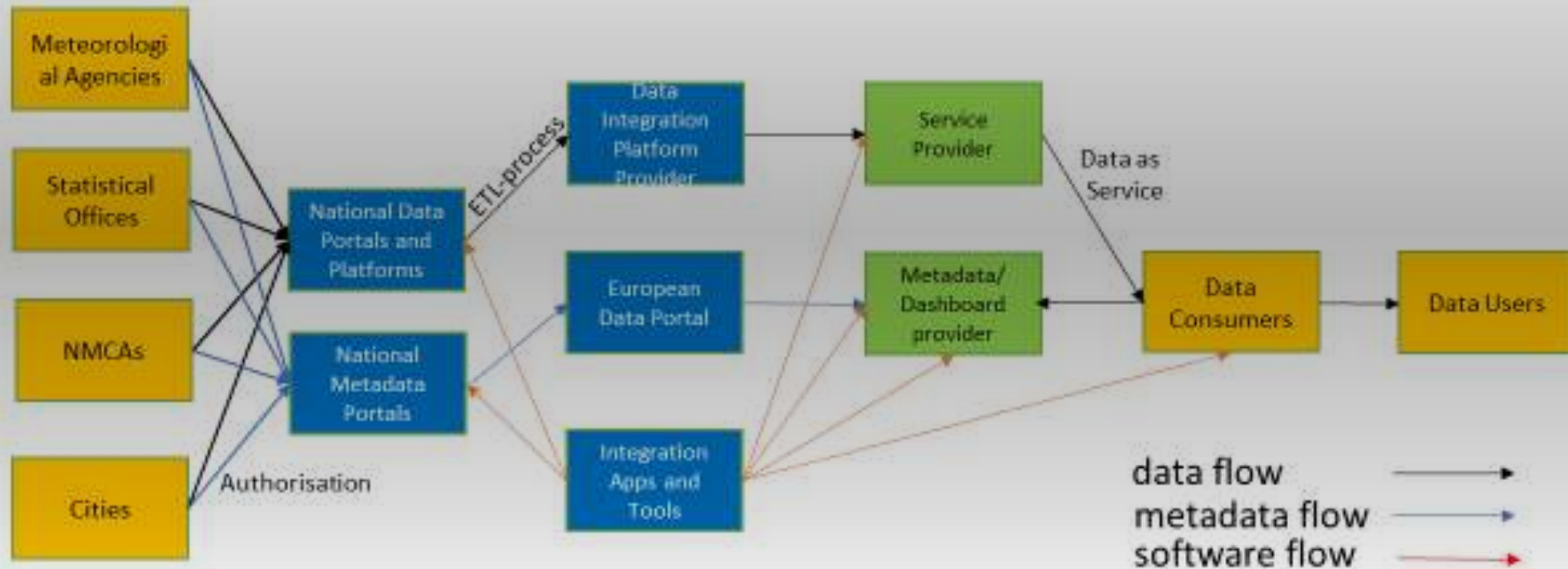
EUROPEAN CORE DATA PROVIDER NETWORK

ANTTI JAKOBSSON

18TH APRIL 2023



WHY THIS NETWORK WOULD BE NEEDED?



High value data sets

European Data Spaces

MISSION

- Support European Data Spaces on interoperable location data
- Work towards increased use of location data in Europe

OBJECTIVES

- Working with the national European Digital Innovation Hubs and helping these to use location data. Each Participant will co-operate with their national hubs and the Location Innovation Hub (Finland).
- Continue to maintain the services and the platform created in the CEF project GeoE3.
- Provide open data sets and services as test beds for the European Digital Innovation Hubs.
- Work to create European Digital Twins on location data in built environment, bioeconomy, traffic and health
- Organise demonstration activities, events and training for creation of interoperability. These may be organized as webinars or using e-learning modules (Location Innovation Academy)
- Seek further funding opportunities through Digital Europe Programme or Horizon Europe for creation of Digital Twins or interoperable services



Location
Innovation
Hub

The Location Innovation Hub (LIH)
is a centre of excellence in location



LOCATION INNOVATION HUB IN A NUTSHELL

Location Innovation Hub (LIH) is a center of excellence in location information. It is coordinated by Finnish Geospatial Research Institute. The center's services are provided in collaboration with a partner network.

Our customers are businesses and public organizations of various sizes who wish to advance and accelerate their digital capabilities and competitiveness edge through more effective use of location information.

We provide tools, testing infrastructure, business and technical consultation, and training. We also aim to provide avenues and consultation for businesses seeking for funding opportunities.

We focus on four different themes: Built Environment, Bioeconomy, Health and Wellbeing, and Transportation and Logistics.

We aim to encourage and help our customers to adopt latest technologies in three key technology sectors: AI and ML, High Performance Computing, and Cybersecurity.

Our vision is to create an active and permanent ecosystem for seeking funding, testing services, products and overall business models, and advancing innovations within the location information domain.

LOCATION INNOVATION HUB AS A PART OF EDIH-NETWORK

- European Digital Innovation Hubs (EDIHs) are part of the EU's new Digital Europe Programme.
- Function as service points that boost digital investment and, in particular, the digitalization of SMEs.
- European not-for-profit actors
- Operation period 2023-2025 + possible extension for 4 years
- More information: <https://digital-strategy.ec.europa.eu/en/activities/edihs>



152 EDIHs [around Europe](#)



321 million euros
funding for the EDIHs



4 Finnish EDIHs (LIH, Finnish AI Region, Health Hub Finland ja Robocoast)

Value is created together

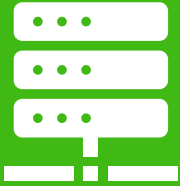


10 business partners

15 universities, public organizations, and associations

22 associated partners

Knowledge transfer and services



7 reference data spaces

600 data sets

50 000 potential location data services available through European Data Portal

200 spatial data services

5 novel sensor data sets

Themes we are focusing on



Built Environment

Bioeconomy

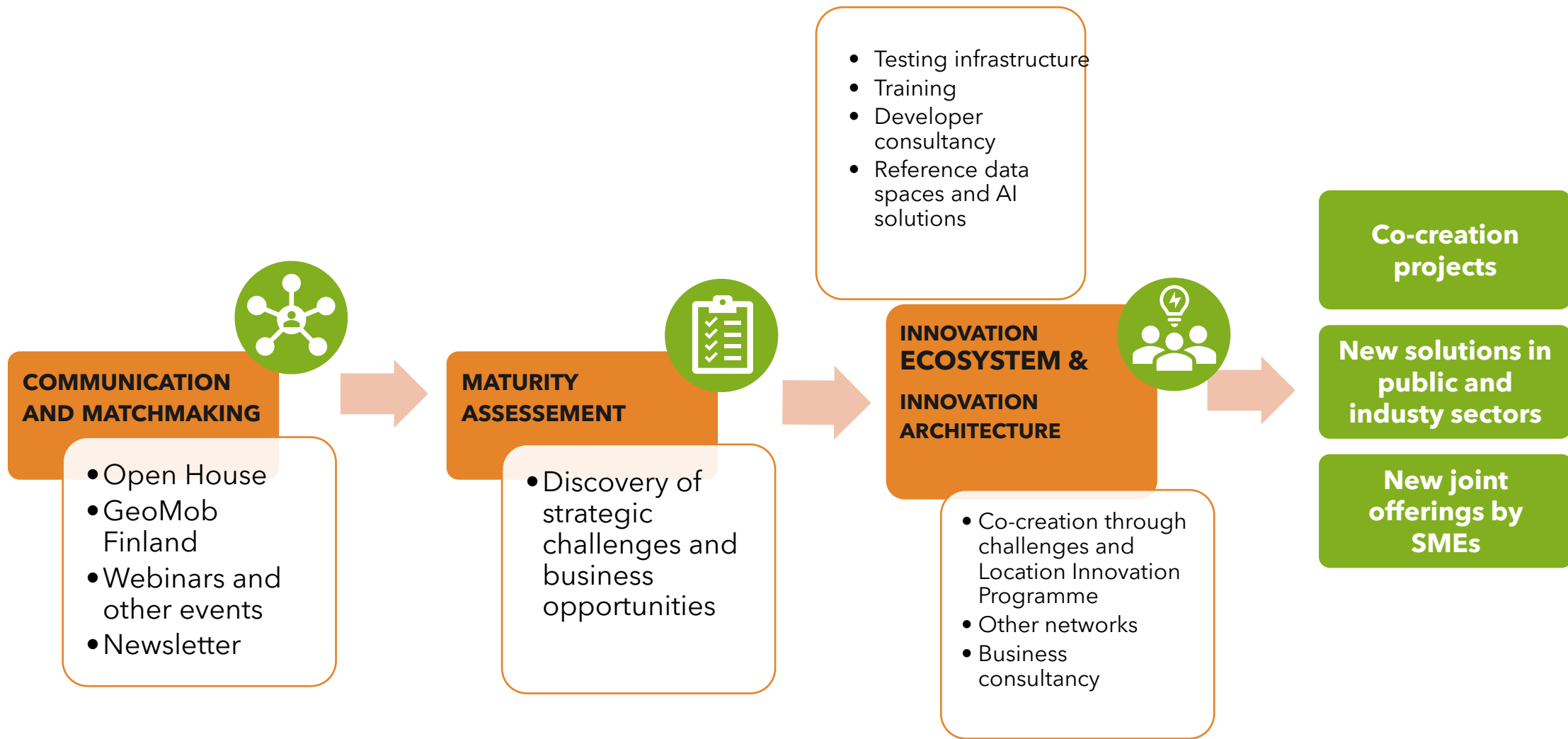
Health and Wellbeing

Transportation and Logistics

GIS business accelerators

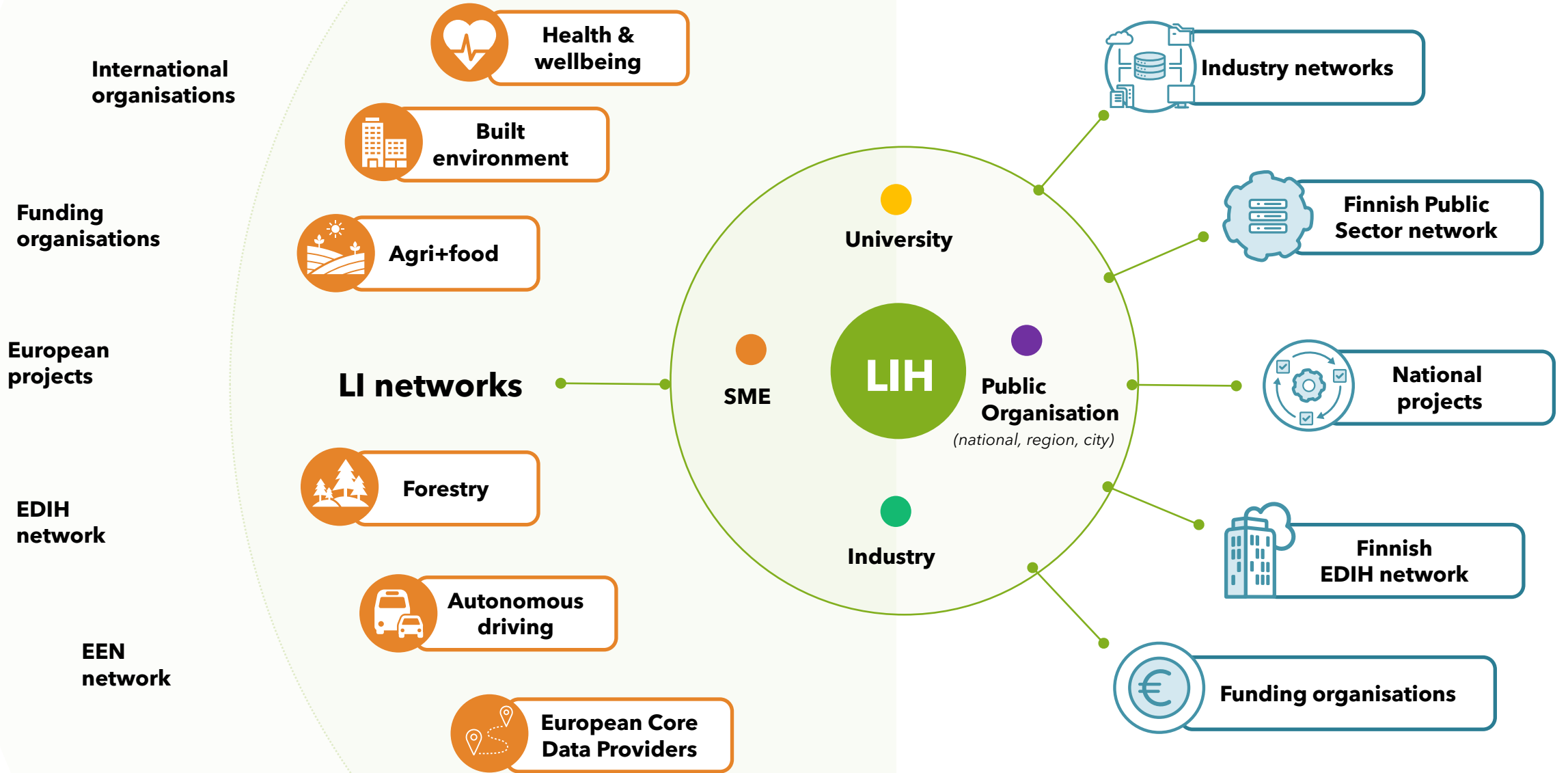


- Interoperability of location and other data
- Next generation navigation space
- Precise positioning



Europe

Finland



PARTNERS AND ASSOCIATED PARTNERS





**Location
Innovation
Hub**

Thank you
lih.fi

HOW TO JOIN AND PROVIDE DATA/SERVICES?

STEPS

- Agree to Join and sign the MoU during 2023, Joining is possible also later
- Become a data provider
 - Fill in the Interoperability Map Survey
 - We will connect current services if these meet Level 1
- Annual work programme of European Core Data Provider Network will be set for 2024
- Possibility to join the consortia seeking further funding