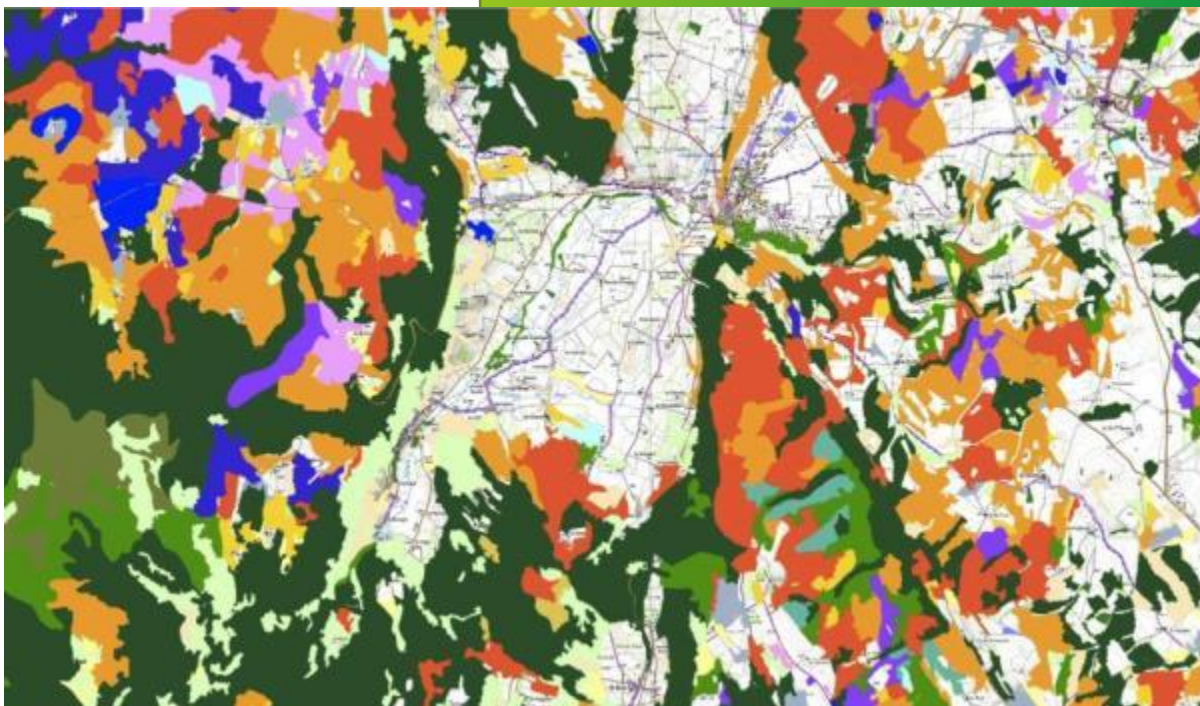


Regulation Proposal: June 2018
Planned Application: January 2021

ASSESSMENT OF IMPACT ON NMCA's OF THE NEW EUROPEAN SPACE REGULATION AND PROGRAMME



F. Chirié IGNF

© IGN

DRAFT REGULATION ESTABLISHING THE SPACE PROGRAMME OF THE UNION - MAIN POINTS

- The **Space** Orientation of Copernicus
- The **role of the in-situ** component in Copernicus
- Copernicus recognising its **need for INSPIRE**
- Reinforcing **complementarity** between Copernicus and Member States in the matter of **reference data**
- Copernicus seeking **improvements in access to in-situ** data
- The **governance** of Copernicus
- The new EU Agency for the Space Programme (**EUSPA**)
- Role of the European Space Agency (**ESA**)
- Role of the European Environment Agency (**EEA**)
- Role of the Joint Research Centre (**JRC**)

THE **SPACE** ORIENTATION OF COPERNICUS

Genesis of GMES

Space industry

Recital 48 of the draft regulation

Copernicus should contribute *“to the development of a viable commercial space sector in Europe”*

2018 Copernicus Budget:

Total: 895 M€

Space activities: 703 M€


In-situ coordination: 1.35 M€

Reference data: 0.4 M€

THE ROLE OF THE IN-SITU COMPONENT IN COPERNICUS

Copernicus recognising the **importance of the in-situ** component

Explanatory memorandum of the draft regulation:

 “Still *more emphasis* needs to be given to the development of the *in-situ* component of Copernicus and the use of relevant in-situ datasets, with *added value to be gained* from *integrating* different sources of earth observation data”

Copernicus website:

 “A wide range of in situ monitoring infrastructures is utilised by the Copernicus Programme in order to *produce, enrich and validate its services, improving their accuracy and reliability.*”

COPERNICUS RECOGNISING ITS NEED FOR INSPIRE

Recital 48:

📍 *“Where feasible and appropriate, [Copernicus] should **make use** of the available **in situ and ancillary data** provided mainly by the **Member States** in accordance with **[INSPIRE] Directive**”*

Copernicus website:

📍 *“The Copernicus Services which deal with **mapping products**, such as the Emergency Management Service, Services for Security Applications and the Land Monitoring Service require a range of **basic reference data**. This can include topographic maps (natural land surface and man-made features), hydrography, transport networks and land cover, digital elevation models, and aerial imagery. This data corresponds with the data sets outlined in the **INSPIRE directive’s Annexes I, II and III.**”*

REINFORCING COMPLEMENTARITY BETWEEN COPERNICUS AND MEMBER STATES IN THE MATTER OF REFERENCE DATA

Copernicus seeking **cooperation** with Member States

Recital 48: “The Commission should work together with the *Member States* and the European Environment Agency to ensure an *efficient access and use of the in-situ datasets* for Copernicus”

Issue of **Copernicus reference data**, up to now:

- Copernicus **geospatial data redundant** with NMCA's reference data
- **No action complementarity**, no effort sharing

Presidency **amendment** proposal in article 28.3:

- “The Member States and Commission shall **cooperate** ~~work together~~ in order to develop the in-situ component for the uptake of space systems and to facilitate the use of in-situ **and reference** datasets to their full potential, **building on existing capacities**.”

COPERNICUS SEEKING IMPROVEMENTS IN ACCESS TO IN-SITU DATA

Explanatory memorandum of the draft regulation:

📍 “However, the **access** to in-situ data needs to be **improved**. **Gaps in the availability** of in-situ data stand in the way of reaching the full potential of the Copernicus services.”

State of Play of the Copernicus In Situ Component 2017 Report:

📍 Need from Copernicus for the following elements to access national datasets in-situ datasets:

- **Standard web services** (e.g. download) and interactive spatial search and query tools
- **Integration** in terms of data model (e.g. INSPIRE)

Comment

📍 It is truly **too complicate for Copernicus to access in-situ data through one Geoportal per country**, with heterogeneous use and technical conditions

COPERNICUS SEEKING IMPROVEMENTS IN ACCESS TO IN-SITU DATA (CONT.)

EuroGeographics initiatives addressing Copernicus needs:

Standard web services (e.g. download)

 **European Location Services**

Integration in terms of data model (e.g. INSPIRE)

 **European Location Services:** common data model, but not common content

 **Core Reference Data:** common data model and common content

But full European coverage is required by Copernicus
NMCA's contributions are needed

THE GOVERNANCE OF COPERNICUS

Regulation proposal from Commission

- One vast “**Union Space Programme**”
 - EGNOS, Galileo, Copernicus, Space Surveillance and Tracking Support (SST), GOVSATCOM
- **One single committee** for the whole programme (art. 107)
- Dilution of MSs influence?

Presidency amendment proposal in article 107

- “The committee shall meet in specific configurations for each component of the programme”
(Galileo, EGNOS, Copernicus, SST and GOVSATCOM)
- “The Programme Committee shall set up the "User Forum", as a working group to advise the Programme Committee on user requirements aspects, in accordance with its rules of procedure.”

THE NEW EU AGENCY FOR THE SPACE PROGRAMME (EUSPA)

Regulation proposal from Commission

- Enhance the role of the former European GNSS Agency (**GSA**)
- Expand its tasks to include **all the components of the Programme**
- New name: **European Union Agency for the Space Programme (EUSPA)**
- **Tasks:**
 - Managing the exploitation of EGNOS and Galileo
 - Implementing activities relating to the **development of downstream applications and services** (art. 30)
 - While Copernicus services currently under the direct responsibility of the Commission

ROLE OF THE EUROPEAN SPACE AGENCY (ESA)

Background of EC – ESA relation

Regulation proposal from Commission

- Explanatory memorandum of the draft regulation
 - 📍 *"The tasks performed by ESA should remain the same"*
- Art. 31
 - 📍 *"development, design and construction of the **Copernicus space infrastructure**, including the operations of that infrastructure"*
- Who is responsible for **access to third-party data**?
 - Not clarified in the first draft regulation
 - High resolution **ortho-imagery**
 - **DEMs**

ROLE OF THE EUROPEAN ENVIRONMENT AGENCY (EEA)

Regulation Proposal from Commission

- Recital 48
 - 📍 *"The Commission should work together with the **Member States** and the **EEA** to ensure an efficient access and use of the in-situ data sets for Copernicus."*
 - 📍 Agreement EEA – EuroGeographics* may remain relevant
 - * to improve the Copernicus access to and use of geospatial data
- Recital 61
 - 📍 *"In the domain of **services**, the Commission should take appropriate benefit from the specific **capacities** provided by Union Agencies such as the **EEA**".*
 - 📍 Copernicus **Land Monitoring Service** may remain managed by EEA
- But delegation agreements have to be re-written for period 2021-2027

ROLE OF THE JOINT RESEARCH ENTRE (JRC)

Regulation Proposal from Commission

- Recital 61
 - 📍 *“Under Regulation 377/2014; the JRC is managing the **Copernicus emergency management service (EMS)** and the global component of the Copernicus land monitoring service; it is contributing to the review of the quality and fitness for purpose of products and information, and to the future evolution. The Commission should continue relying on JRC's **scientific and technical advice for the implementation of the Programme**”.*
- Not clear if Copernicus **EMS** and **Global Land** will remain managed by JRC
- Delegation agreements have to be re-written for period 2021-2027

CONCLUSION

What may change

- To what extent Copernicus will be obliged to cooperate with Member States in the matter of reference data?
- Not yet fixed, vigilance of Member States is needed

Convergence of NMCAs is needed

- To fulfil Copernicus harmonisation requirements
- Otherwise OSM will be preferred
- ELS and CRD are good initiatives in this respect

THANK YOU FOR YOUR ATTENTION