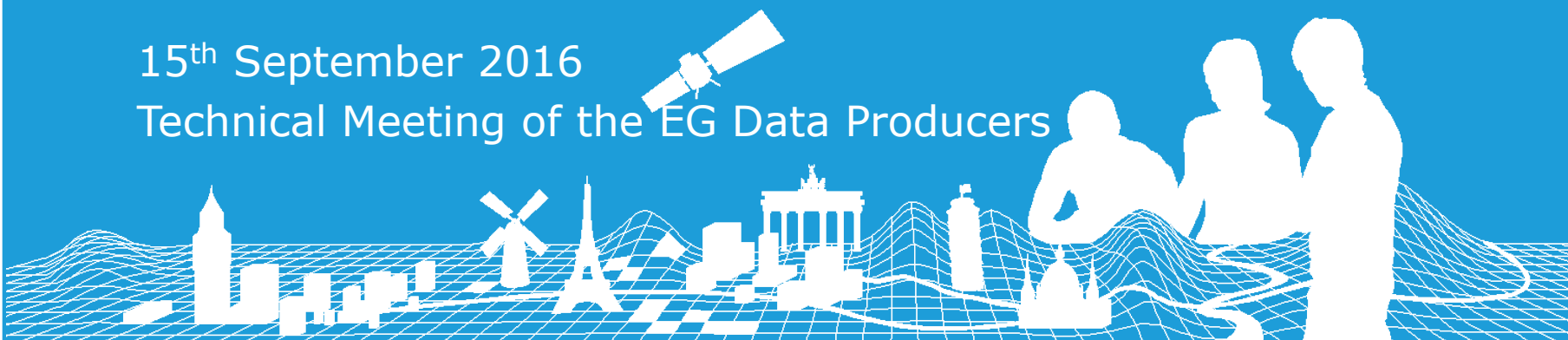


Break-out session Group A

Ben Bruns / KadasterNL

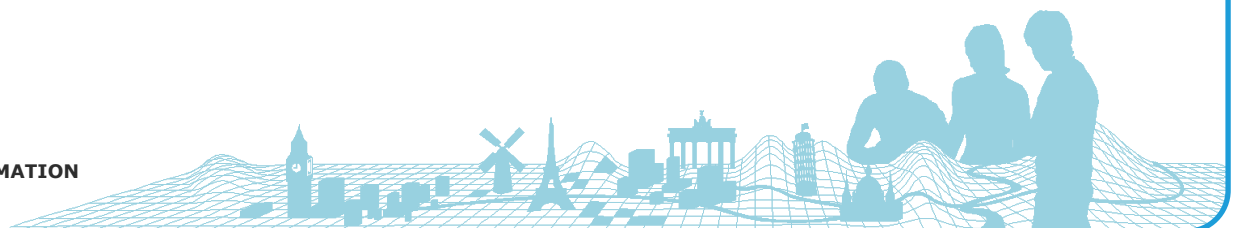
15th September 2016

Technical Meeting of the EG Data Producers



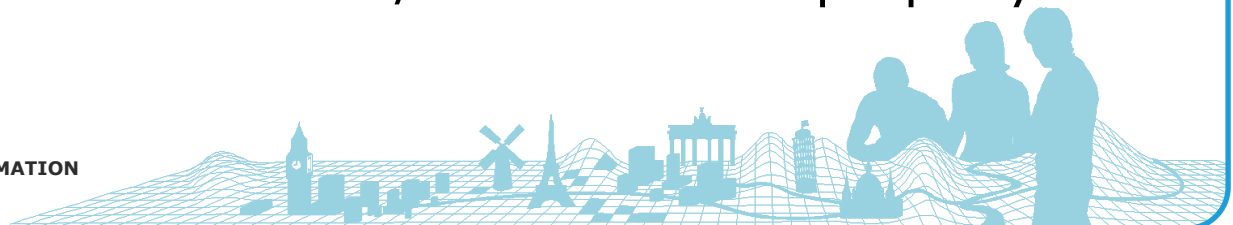
Participants

- RC Group A: Ben Bruns, Tony Baving, Marieke Kuijer
- BE/LU: Florence Couvreur
- CY: Marios Themistokleous
- GB: Graham Cole, Stephen Alphey, Frank Brimson
- MD: Constantin Nagorneac, Ion Cretu
- RO: Adina Moise
- UA: Andrii Cherin



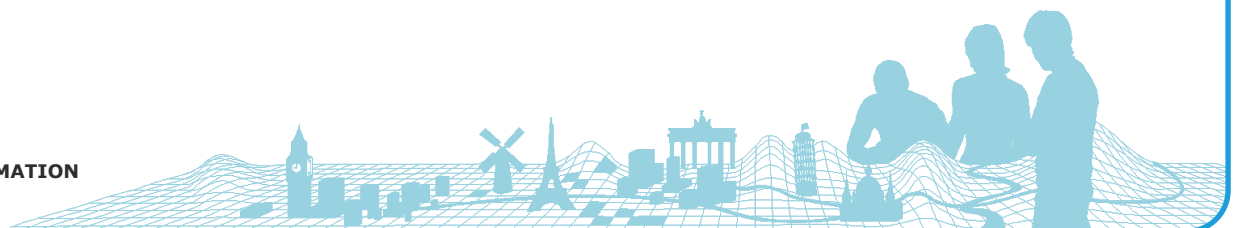
Tools

- Which tools are used?
 - Mainly used: Topology rules (BE/CY/LU/MD)
 - Also: C# (GB/BE/LU)
 - Not often used: DataReviewer, Tools Noemie
 - National tools: (UA: PostGIS tools / BE-LU: FME)
- Tool issues
 - Admin rights
 - Licences
 - Dependant on ArcGIS version
 - Not usable for QGIS
 - Some tools don't run / or don't work properly



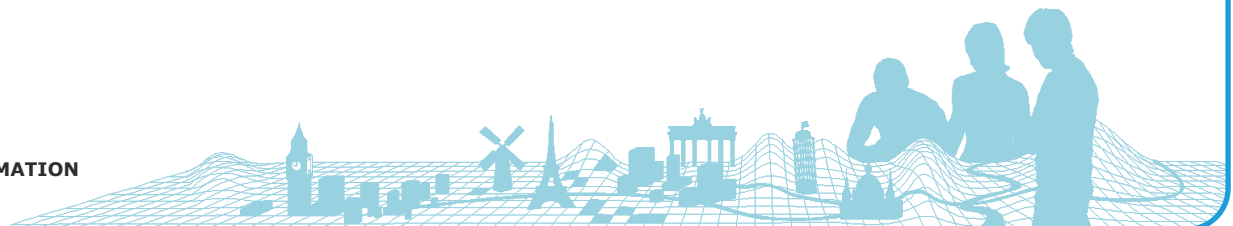
Production workflow

- New deadline Trans theme: 30th of September (data ready for assembly)
- Next year: more emphasis on deadlines (delivery/validation/corrections)
 - Difficulty: dependancy on source data, political issues
- Edge Matching:
 - Isn't done by all NMCA's



Data (quality) issues

- GB: CoastL
 - Hopefully ready next year
 - Thank you for all the hard work you putting in to this!
- UA: start of national ERM production process
- EBM \neq ERM-BND: (GB,MD,RO)



Communications

- Knowledge Exchange (automatic generalisation/tools/process/remote desktop connection?)
- Data Exchange
 - At the moment: e-mail / WeTransfer / Dropbox
 - New method: BKG FTP server -> upload en download data (test)
- E-mail addresses
 - Some additional colleagues in 'cc'

