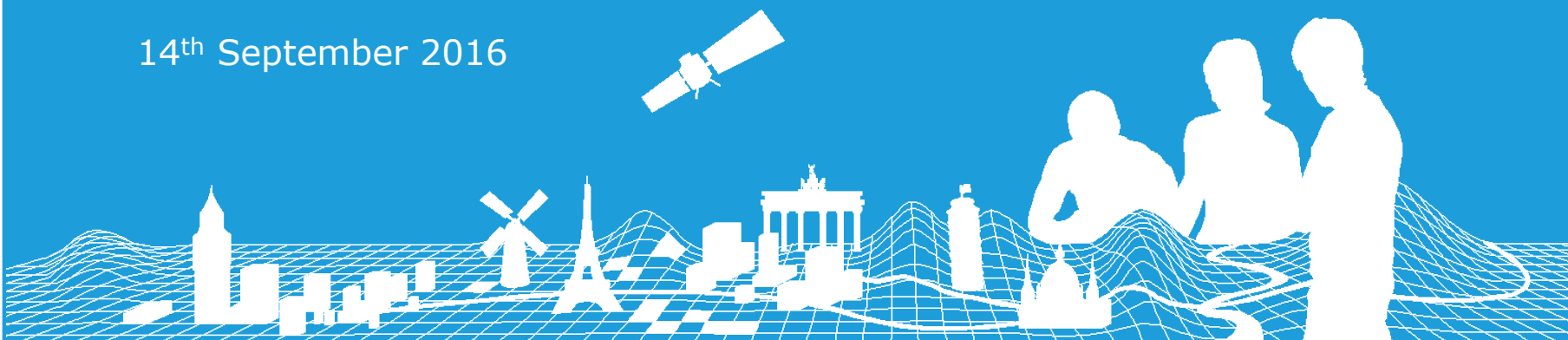


Breakout Session Group D

Andreas Pammer BEV, Austria
Alexander Knapp BEV, Austria

14th September 2016



Group D Participants

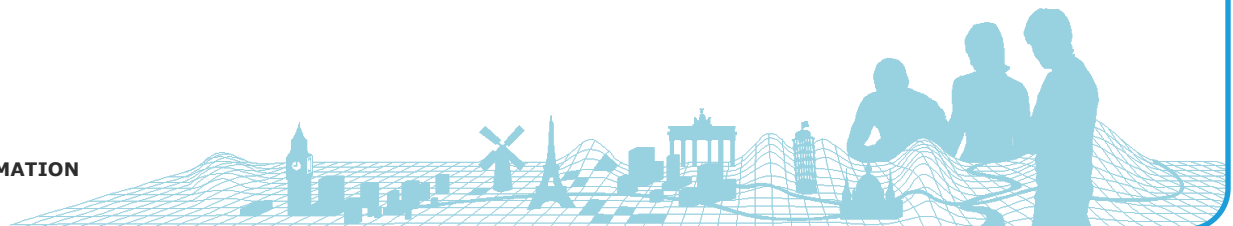
- Armenia
- Austria
- Bosnia and Herzegovina
- Croatia
- Czech Republic
- Germany
- Macedonia
- Poland
- Slovakia
- Slovenia
- (Hungary + Serbia are not attending)



What problems / issues do producers have?

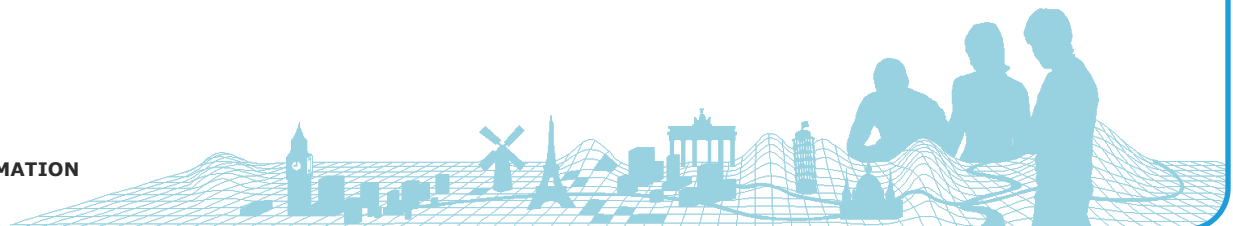
→ TEN-T reference data for Austrian railway stations is not correct

→ No other specific problems



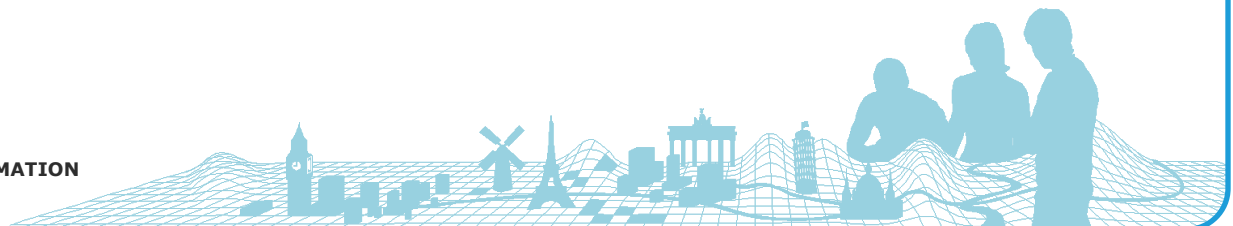
Additional Support I

- Croatia has set up a production process (outsourcing)
 - Bosnia and Herzegovina will prepare for production of ERM
 - Armenia is working on ERM dataset
 - Not complete yet
- ➔ they will contact Angela & PMT for specific help



Additional Support II

- Which tools do you use?
 - Problems?
 - ➔ not all producers have data reviewer
- Are the documents clear?
 - What is your opinion?
 - ➔ no problems for experienced producers, all the information is available



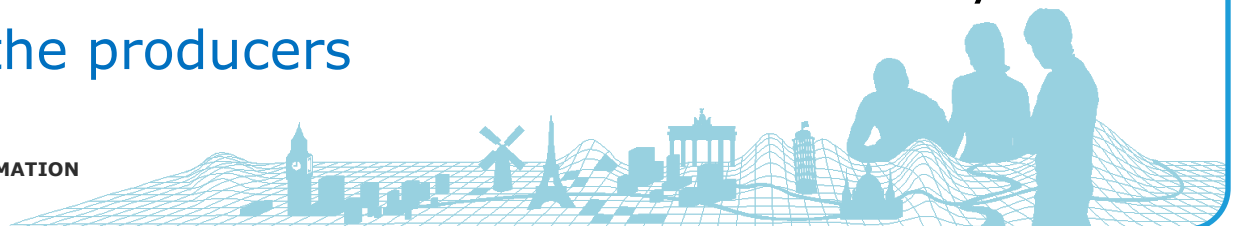
Quality Assurance I

- General issues, edge matching
→ no problems
- Consistency with other themes
→ no problems
- QA Reports clear?
→ very helpful for correction
- Population Figures (PPL)
→ only an issue for MK, PPL is calculated for some settlements



Quality Assurance II

- International Boundaries
 - Agreement on indispute areas!
 - Jörgen will create a “technical” border for indispute areas; Producers will verify that solution
- Connecting Features
 - Do you use them?
 - many countries use them and report back to Marcus Brühl
 - CZ: connecting features should be on a vertex of international boundary (not on the edge)
- Features on international boundary
 - Is there a problem not to include them for delivery?
 - no issue for the producers



Communication

- Production Management System (PMS)
 - ➔ good response from producers
- FTP Server by BKG
 - ➔ will be used as common data exchange platform

