

# Group B's Breakout Session Report

Technical Meeting of EuroGeographics Data Producers

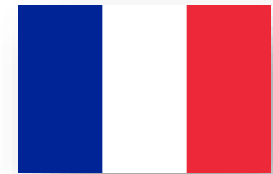
15<sup>th</sup> of November, 2017

Clément Godin, regional coordinator



# Participants

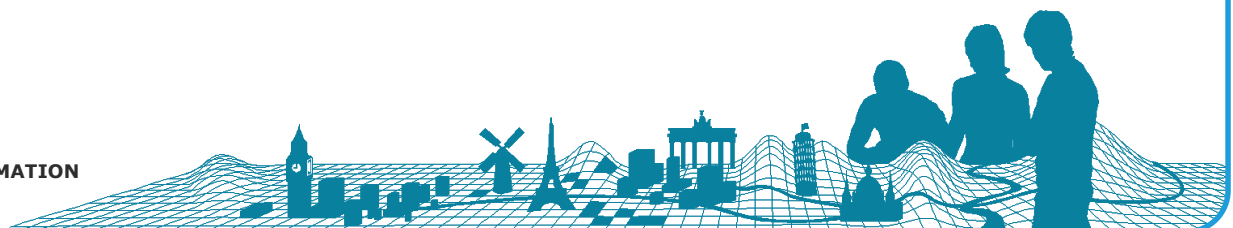
- All countries were represented
  - ES Spain
  - GB Great Britain
  - FR France
  - IT Italy
  - IE Ireland
  - ND Northern Ireland
  - MA Malta
  - PT Portugal



# Production workflow and tools

## What's new?

- Nothing new in national production workflows
- PT might give up their ArcGIS licence any time soon
  - PT uses PostGIS as production format
  - PMT would start to think about including PostGIS in the production process
  - Solution suggested: FR transforms PT's data from PostGIS into geodatabase thanks to FME workbenches
- National producers (e.g. ND) expressed their satisfaction towards the exchanges during validation phase
  - Errors extracted into shapefiles
  - RC's guidance written in the validation spreadsheet



# Major risen problems and issues (1)

- Most of the risen problems and issues concern exchanges between RC and national producers

! Numerous validation iterations create a lot of temporary databases with same names and/or long names

➔ RC will propose a system to name all the temporary databases using agreed abbreviations and dates

- Ready for 2018 production

! Sometimes sending the data is complicated

- National email systems block attached zipped files (FR, ND...)
- NMCA's security doesn't allow access to BKG's server trough FTP (PT)
- Problems that might occur during the uploading create incomplete and/or unreadable datasets (IE, IT...)



## Major risen problems and issues (2)

➡ Databases will be sent using BKG's server through FTP as much as possible

- The geodatabase will be zipped
- The .gdb extension will be removed from the zipped file's name to avoid potential problem with file systems
- If ever the national producer has to use another way, they will send an email on the side to RC to warn them

! RC and national producers waste too much time on communicating about exceptions

➡ Some countries deliver with their national data, their metadata with all the exceptions listed in it

- The position to adopt will depend on the capacity of Kadaster's validation tools to include exceptions



# Major risen problems and issues (3)

! RC needs to have an approximate date of delivery

- Essential to organize work at IGN-F efficiently
- Even (especially!) if it's behind schedule

➡ National producers will make an effort



# Other broached topics (1)

## ■ Edge-matching

- RC is satisfied with Group B's data on boundaries
- FR added some intermittent rivers to assure continuity with IT objects
- IE and ND organize a workshop every year to process issues
  - They use a "SBE" edge-matching dataset
  - As a result, there isn't much work to do now
- If possible, RC will go through all the border features to check them, ask for producers' opinions, and send changes to BKG
  - The work on ES-PT is put on hold because major changes will occur

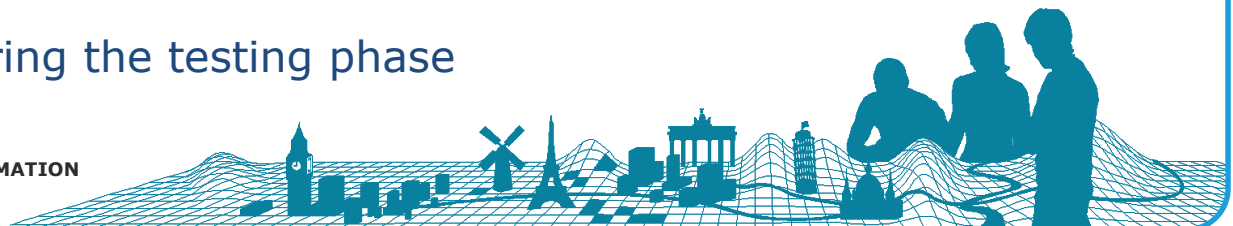
## ■ InspireID

- ND pointed out that it's important to check the final version of ERM0 in order to include the altered inspireID into their national production database



# Other broached topics (2)

- About communication
  - IE wonders when it would the best time to ask RC about production issues
    - It's been decided to ask RC preferentially between January and March when they is available to send elaborate answers
- Several producers (IE, IT) expressed the wish to have0 a forum where common issues could be talked about
  - Something beside annual breakout sessions and webinars
  - The PMS would be a convenient, logical, unique point of access
- National producers have some questions about Kadaster's validation tools
  - Especially concerning the used projection (is it ETRS89-LAEA?)
  - It will clearer during the testing phase





# Other broached topics (3)

- About national workflows
  - On PT's initiative, the national producers summarized their workflow
  - How ERM is derived from their national production database
  - What format are used
  - A few intimations about the future



Gracias

Bedankt

Teşekkürler

Merci

Go raibh maith agat

Köszönöm

# Thank you for your attention

Благодаря

Tack

Dziękuję

Grazie

Ačiū

Danke

Děkuji

Tak

Tānan

Hvala

Takk

გმადლობთ

Obrigado

Grazzi

Ďakujem

Mulțumesc

Paldies

Ευχαριστώ

Thanks

Хвала

Kiitos



IGN – Institut national de  
l'information géographique  
et forestière

73, avenue de Paris

94165 Saint-Mandé Cedex  
FRANCE

## Contact

Clément GODIN

☎ +33 1 43 98 81 81

✉ clement.godin@ign.fr

EuroGeographics

CONNECTING YOU TO THE  
**AUTHORITATIVE GEO-INFORMATION  
FRAMEWORK** FOR EUROPE

