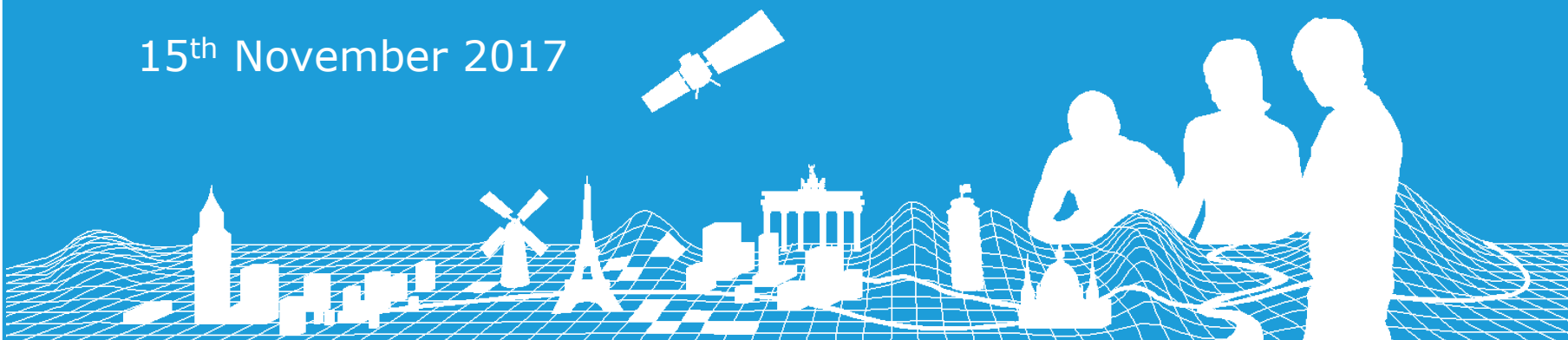


BREAK-OUT SESSION REPORT

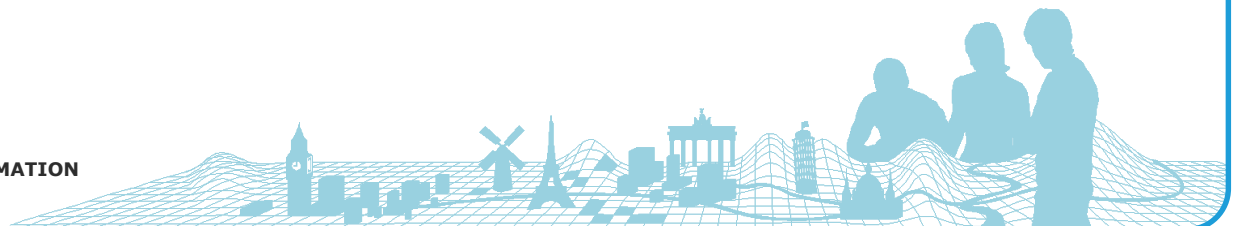
Dovilė Rusonytė (AGI), Group C coordinator

15th November 2017



Production Workflow and Tools

- Different scale datasets (10k-250k)
- Different sources (national databases, authorities, municipalities, geoportals)
- Basically manual work
- ArcGIS topology, FME
- Changes in future workflow for Sweden



Validation

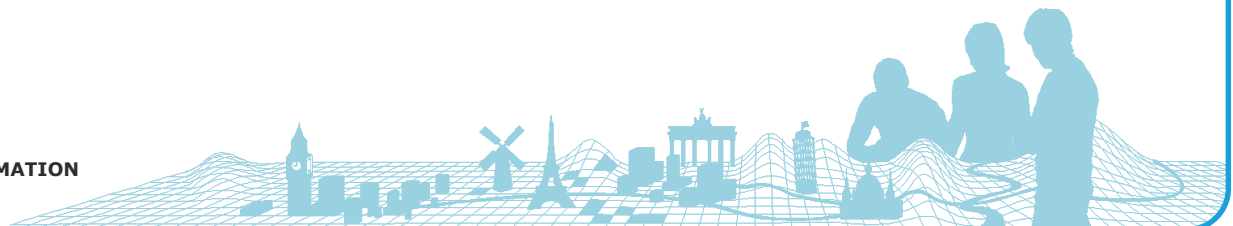
- Outcome interpretation
 - *Technical questions to PMT*
- Exceptions
 - *List for permanent ones*
- Previous process
 - *Prioritized criteria*
 - *Some errors corrected by RC*

Prioritized and separated criteria to requirements and recommendations



Edge matching

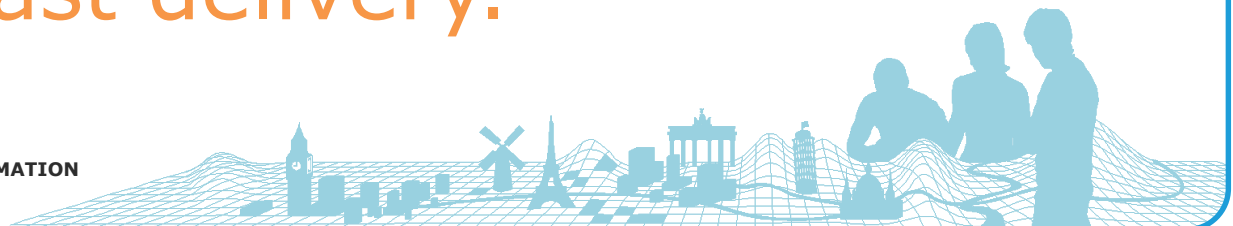
- Not required
 - *FO, IS*
- Done
 - *NO, SE, FI*
- No boundary changes
 - *EE, DK, LT*
- Small boundary changes
 - *LV*



2017 delivery

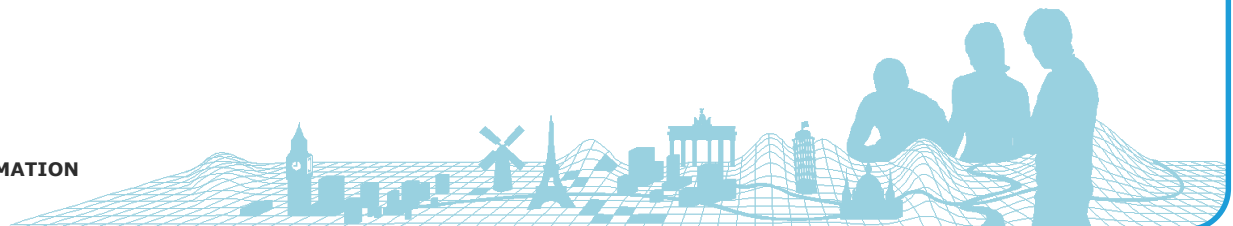
- Delivered
 - *NO*
- Soon to deliver
 - *SE, EE*
- Deliver as fast as possible
 - *LV, DK, FO, IS*

Assembly work can be started without waiting for last delivery.



Planning

- Limited time resources
 - *Availability schedule*
- Limited human resources
 - *New people on production*



Thank you for your attention

