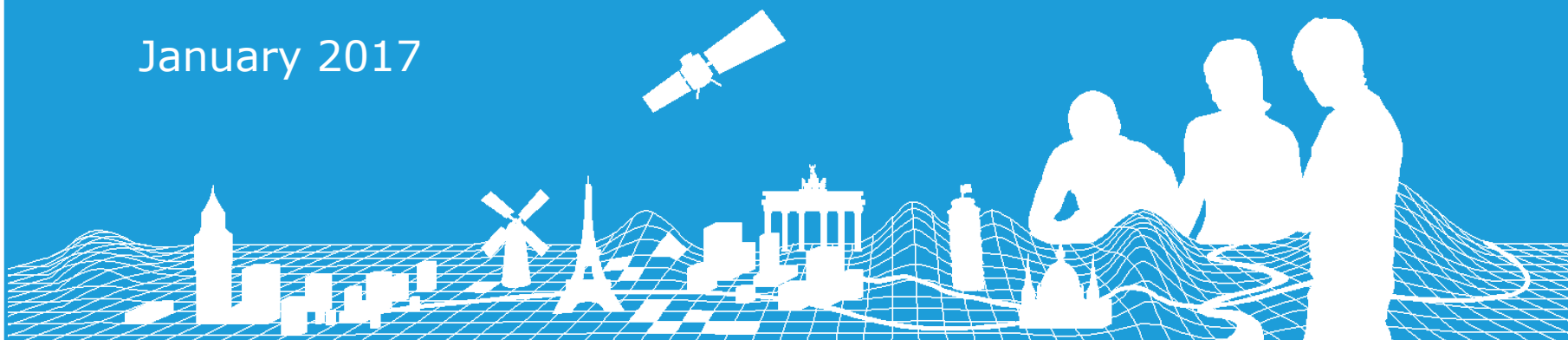


Data Producers Poll Results

Angela Baker / PMT

January 2017



Responses - 25

Member	Member	Country
IGN-B	Institut Géographique National	Belgium
DGU	Državna geodetska uprava	Croatia
DLS	Tmima Ktimatologiou Kai Chorometrias	Cyprus
ZU	Zeměměřický úřad	Czech Republic
SDFE	Energi-, forsynings- og klimaministeriet / Styrelsen for Dataforsyning og Effektivisering	Denmark
NLS-F	Maanmittauslaitos	Finland
HMGS	ΓΕΩΓΡΑΦΙΚΗ ΥΠΗΡΕΣΙΑ ΣΤΡΑΤΟΥ	Greece
FÖMI	Földmérési és Távérzékelési Intézet	Hungary
MHTEHI	MHTEHI	Hungary
LMI	Landmælingar Íslands	Iceland
OSI	Ordnance Survey Ireland	Ireland
IGM	Istituto Geografico Militare	Italy
VZD	Valsts Zemes Dienests	Latvia
LGIA	Latvijas Ģeotelpiskās informācijas aģentūra	Latvia
MEPA	Malta Planning Authority	Malta
LPS	Land and Property Services	Northern Ireland
KARTVERKET	Kartverket	Norway
DGT	Direção Geral do Território	Portugal
ANCPI	Agencia Națională De Cadastru Și Publicitate Imobiliară	Romania
GKU	Geodetický a kartografický ústav	Slovakia
GU	Geodetska uprava Republike Slovenije	Slovenia
LANTMÄTERIET	Lantmäteriet	Sweden
SWISSTOPO	Bundesamt für Landestopografie (swisstopo)	Switzerland
KATASTAR	Агенција за катастар на недвижности	The Former Yugoslav Republic of Macedonia
OS	Ordnance Survey	United Kingdom



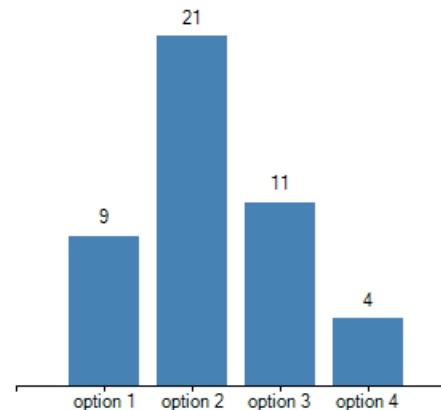
Technical Knowledge and Contact

Q1: Do you feel you have the correct technical knowledge to be able to complete your tasks for EuroGeographics?

- YES

Q2: Do you have someone that you can contact to ask questions?

- YES



Options:

option 1	Someone inside your organisation
option 2	Your Regional Coordinator
option 3	Production Management Team
option 4	Another member of EuroGeographics

COMMENT: This is very pleasing because it shows that the correct person in member organisations is being selected to work on the Pan European products



Contact with EGHO and PMT

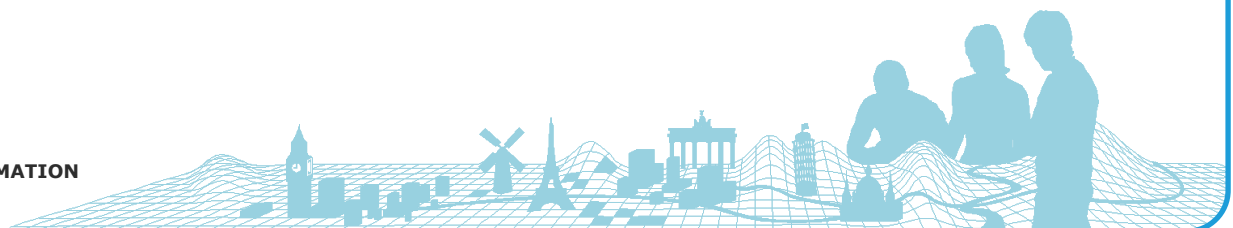
Q3: Do you get enough information from the Production Management Team and EuroGeographics Head Office?

- Yes (23)
- No (2)
 - I'd like to receive more detailed information about the real deadline when you deliver back final version ERM X.0. Sometimes you send it back in February sometimes in April.

COMMENT: The new QA process should solve this.

- There has been a surprising number of validation rounds after we thought we were done.

COMMENT: The new QA process should solve this.



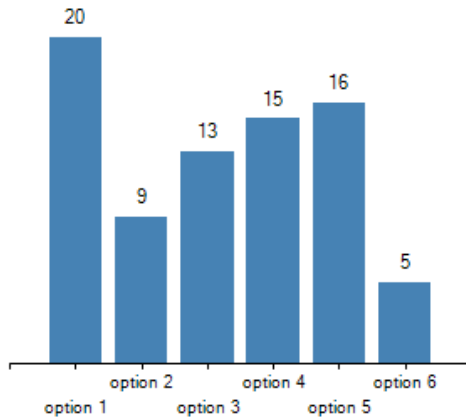
What kind of support is requested?

Q4: Is meeting physically once a year enough?

- Yes (21) / No (4)

COMMENT: There are no plans to meet more often than once a year as a complete group but there is no reason why regional groups could not arrange a meeting if there was a requirement for this.

Q5: Please let us know what kind of support you would most like us to provide:

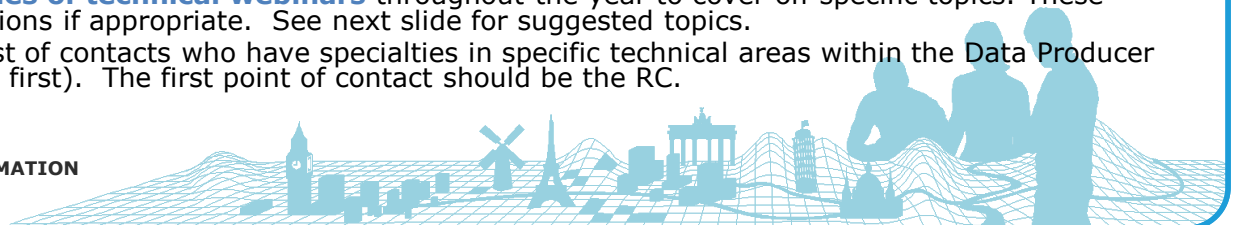


25 NMCA's participated the poll Options:

option 1	Regular updates via email from the Production Management Team [20]
option 2	Webinars to update you on general EuroGeographics activities [9]
option 3	Direct access to peers within our community that you can email / speak to [13]
option 4	A series of webinars which cover various technical aspects (topics to be agreed) [15]
option 5	Question and answer sessions throughout the year (electronically) with the Production Management [16]
option 6	EuroGeographics to provide support for your activities with your senior management [5]

COMMENT:

- The top answer is to have regular emails so we should consider a **newsletter** to the tech producers when we have information to share.
- The second highest answer is Q&A sessions. We should consider **Q&A webinars during the production periods** for questions from the tech producers, this would probably only be 30 minutes. This could be by region or with the full Production Management Team
- We should also schedule in a **series of technical webinars** throughout the year to cover off specific topics. These could be coincided with Q&A sessions if appropriate. See next slide for suggested topics.
- We could consider publishing a list of contacts who have specialties in specific technical areas within the Data Producer network (as agreed with contacts first). The first point of contact should be the RC.



Webinar Topics

Q6: If you would like us to consider a series of webinars for this community can you please give us the top three topics you'd like us to cover

Data / Technical Specifications

- Correlation of Technical Specs on administrative limits with National legislation [RO]
- Reading and understanding data specifications related to specific data sets, preparation of guidelines [MK]
- More knowledge about fulfilling EBM data [IE]
- Matching a national Database with EuroGeographics attribute tables [IE]
- Update strategies [PT]
- Data generalisation [IT]

Tools

- Unique validation tool [IT]
- ArcGIS tools for transformation/validation [PT]
- New tools that are available to us and how they work [GB]
- FME tools that may be of use to us ELF migration to EuroGeographics ownership and progress [GB]
- FME procedures for maintaining EBM data [HR]
- Presentation of all available tools within EuroGeographics that could be used in the national production and validation process (accessibility, functioning, demonstration, examples ...) [MK]

QA

- Best practice of data correction and adding [LV]
- Checking of topographic data prior to passing on data E.g. Data Reviewer and / or standard topographic rules [MT]
- Webinar on the Validation Report, explaining specifically the errors found during the validation process [CY]
- Validation methodologies [PT]
- Quality control and evaluation of data [MK]
- Quality requirements: How is the Product being used. Any points of view of the quality? Transformation [SE]
- How to create an "UUID" for each object to deviate the "inspireID" and work with it instead of "objectID". => it will be very helpful in the process of validation [CH]
- More analytical instructions about the quantity of the necessary punctual information e.g. how many museums could be depicted in a city [GR]

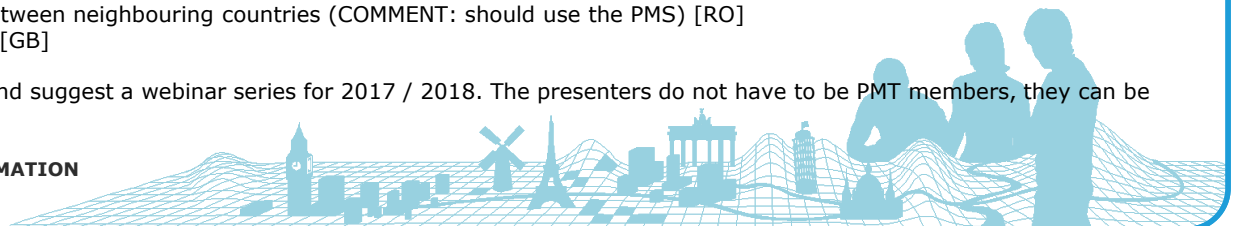
ELF

- Basic ELF info Edge-matching [IE]
- some aspects of transforming data into gml for ELF [ND]

Other

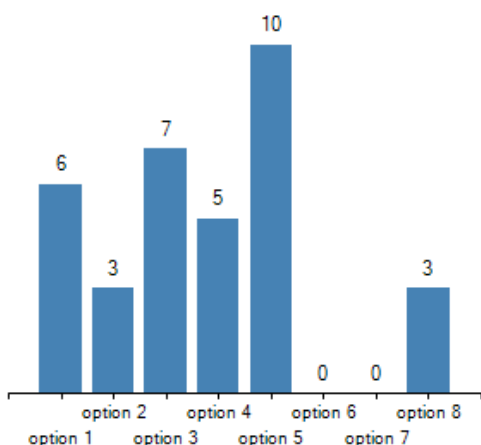
- Platform for enhancing communication between neighbouring countries (COMMENT: should use the PMS) [RO]
- General information for EuroGeographics [GB]

COMMENT: The PMT / EGHO should prioritise and suggest a webinar series for 2017 / 2018. The presenters do not have to be PMT members, they can be other Data producers.



New data producers

Q7: If you are a potential new producer, we would like to understand what we can do to support you to provide your data. As explained if you cannot provide all the data required, we would prefer that you supplied some of it even if you cannot fulfil the full specification.



25 NMCA's participated the poll Options:

option 1	Technical assistance from Production Management Team [6]
option 2	Technical or product training on site [3]
option 3	Technical or product training through a webinar series [7]
option 4	Technical or product training spending time with key production team members [5]
option 5	Data Quality support [10]
option 6	Giving Production Management Team access to your portals so we can create data instead [0]
option 7	Formal requests to support your contribution from the EuroGeographics Secretary General [0]
option 8	Strengthen the importance of EuroGeographics products on the management level [3]

COMMENT:

- This question was not answered by any potential new data producers
- **Data Quality support** is the most popular answer, we should consider this topic in our **webinar series** and how this links to the work by Kadaster on QA.
- Technical and Product training is the next most popular answer; again we should **plan a series of technical webinars** throughout the year.
- Technical assistance is already provided by the PMT, but we should make sure that **new producers are introduced to their regional coordinators as a first point of contact**. The reorganisation of the regional groups which has just been completed should support this.



Save the date!

- Data Producer Technical Meeting 2017
- Tuesday 14th and Wednesday 15th
November 2017
- Lisbon, Portugal

