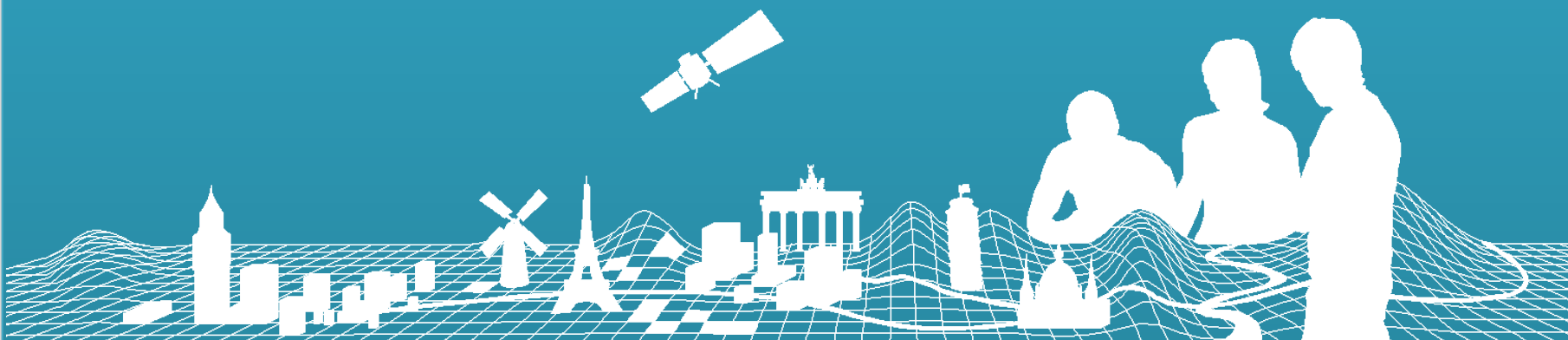


Break-out session day 1 – Group B

Noémie Grémeaux / IGN France
EG producers meeting, 01.04.2015



Participants

- Luis Miguel (ES)
- Maia, Ketevan and Ketevan (GE)
- Tony and Jim (IE)
- Paolo (IT)
- Carol (MT)
- Sandra (ND)
- Marisa (PT)
- Clément, Samir and Noémie (FR)



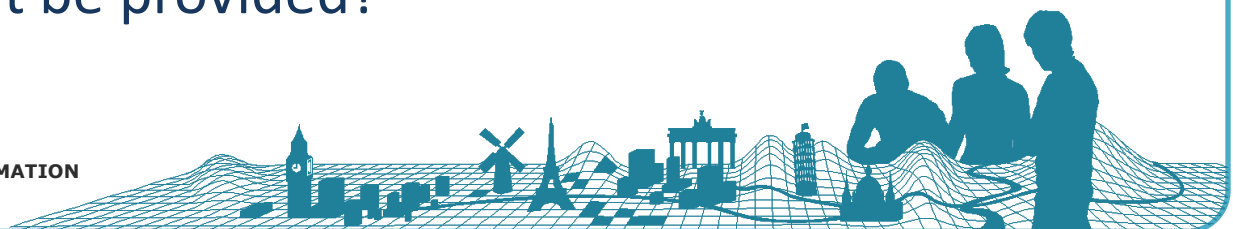
Derivation of BND data from EBM

- Everyone is ok with Marcus' scenario 1
 - Already applied for ES, FR and PT for ERM v8.0
- ND: new boundaries will be defined on April 1st
 - clarify with Marcus and Eurostat what should be delivered
- ND: EEZ lines could be available somewhere, should they try and collect the data?



Quality assessment

- Review of xls quality assessment spreadsheet and small amendments country by country
- Challenges:
 - ES: find sources for CoastA, improve width of watercourses
 - FR: fill LDV attribute
 - GE: fill CoastA, width of watercourses
 - IT: try and add springs, new HydroIDs consistent with official data
 - MT: waiting for official information to fill HydroID
- Question: if information is available for only part of the country, should it be provided?



Use of validation tools

- Countries using Data Reviewer jobs and/or PLTS: ES, IT, PT
- Others: 1Spatial/FME tools (ND), ESRI tools (IE), Python scripts (FR producer + RC)
- IT: it is an issue to have all feature classes from a topology inside a given topology ruleset → e.g. AirfldA and RoadL have no rule linking them but putting them together creates additional vertices on the objects → the ruleset are not really useful directly...
- It would be useful to receive the attribute rules as SQL queries (maybe within a Python script)



Use of validation tools

- Data Reviewer jobs / PLTS used by producers and Python tools used by RC sometimes do not give the same results...
- Noémie to send her validation tools to the producers if they want to use or test them (not really ready at the moment).



Producers' issues

- General lack of resources...
- ARA calculation: there are differences between what the producers have in their data and the tool results.
 - Which values should be used? Official (national projection) or calculated?
 - LCC projection is not necessarily a good projection for calculating areas.



Reactions to the new contract

Everybody is happy that POIs have been dropped...

... except Spain who put a lot of effort into that!



Others

- Some producers have noticed important errors in the data proposed on the ELF platform.
- How can we deal with this if we only accept the layers required in the production plan?
- This is bad publicity for our data... Can we put something like “downgraded quality”, “test data” etc.?

