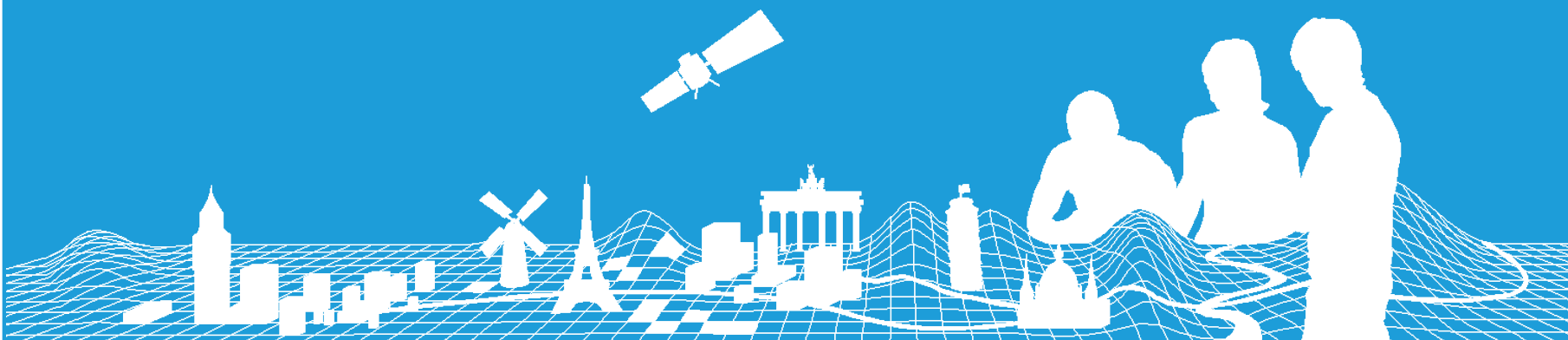


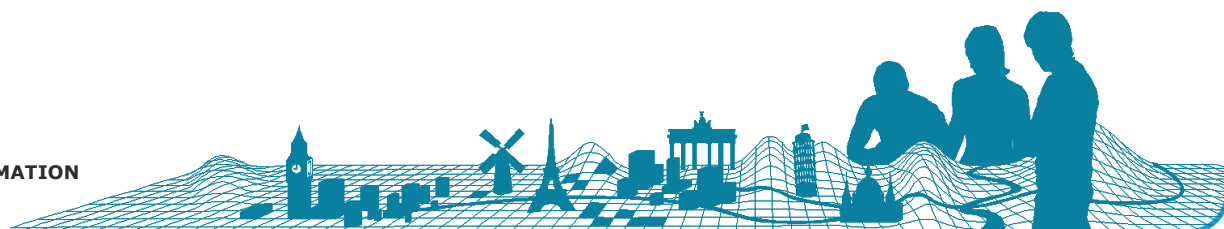
Production 2016/2017 EBM and ERM

Jörgen Spradau and Regine Elling, BKG
EG Producer Meeting, Amsterdam
14th/15th September 2016



Content

- Eurostat update programme
- Status of production year 2016
- Production EBM and ERM 2017



Update programme (Eurostat contract)

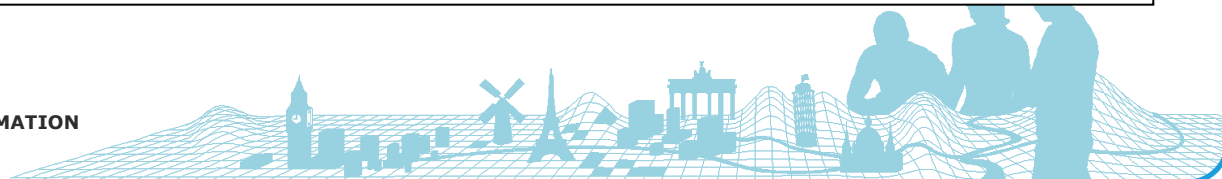
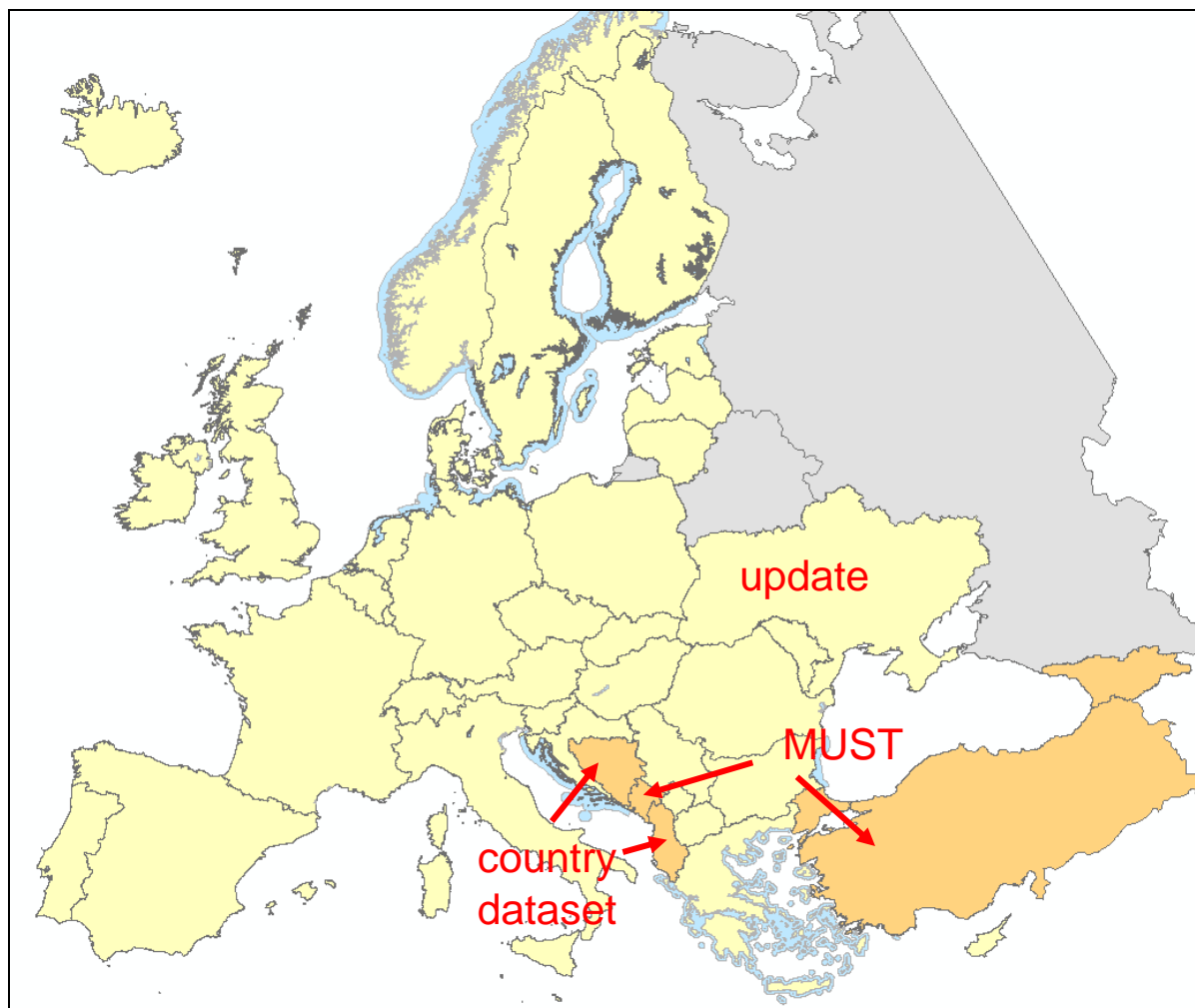
Production year		2015	2016	2017	2018
Delivery to Eurostat		Jan 2016	Jan 2017	Jan 2018	Jan 2019
EBM Version		10.0/10.1	11.0/11.1	12.0/12.1	13/13.1
ERM Version		9.0/9.1	10.0/10.1	11.0/11.1	12.0/12.1
ERM themes	BND	BND	BND	BND	BND
	HYDRO	HYDRO		HYDRO	
	TRANS		TRANS		TRANS
	POP		POP		POP
	MISC			MISC	
	NAME			NAME	
	VEG				VEG



EBM current coverage extension

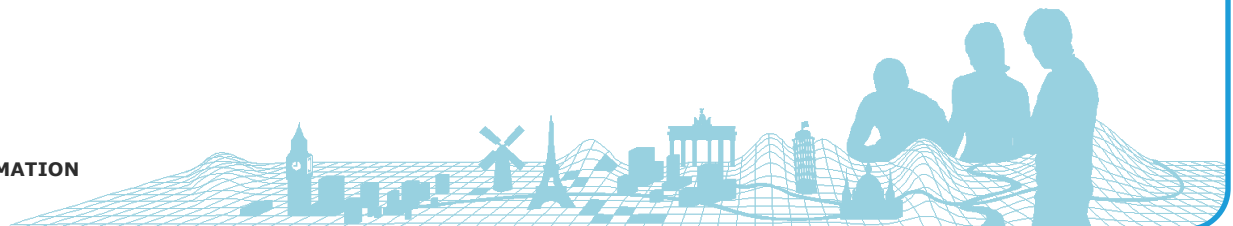
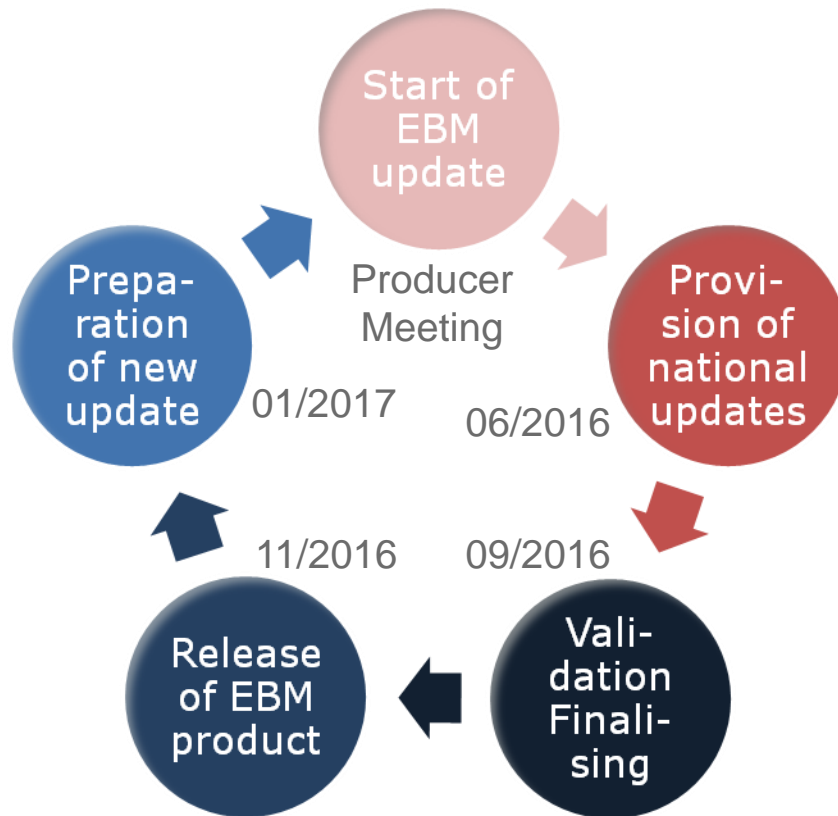
Complete European coverage is a mandatory Eurostat requirement!

- ☐ ☒ possible EBM extension
- ☐ ☒ out of scope
- ☐ ☒ EBM
- ☐ ☒ <all other values>

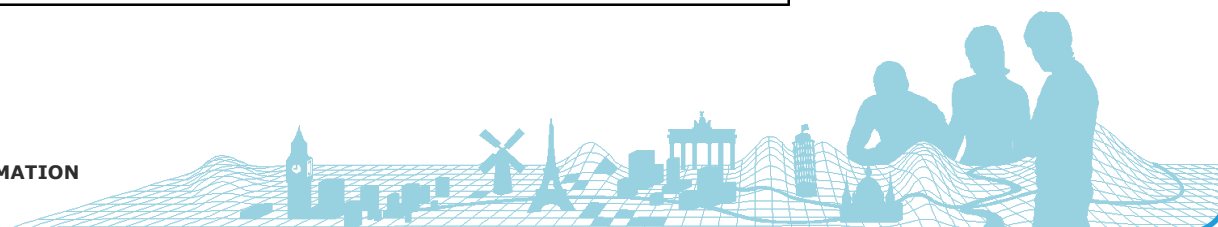
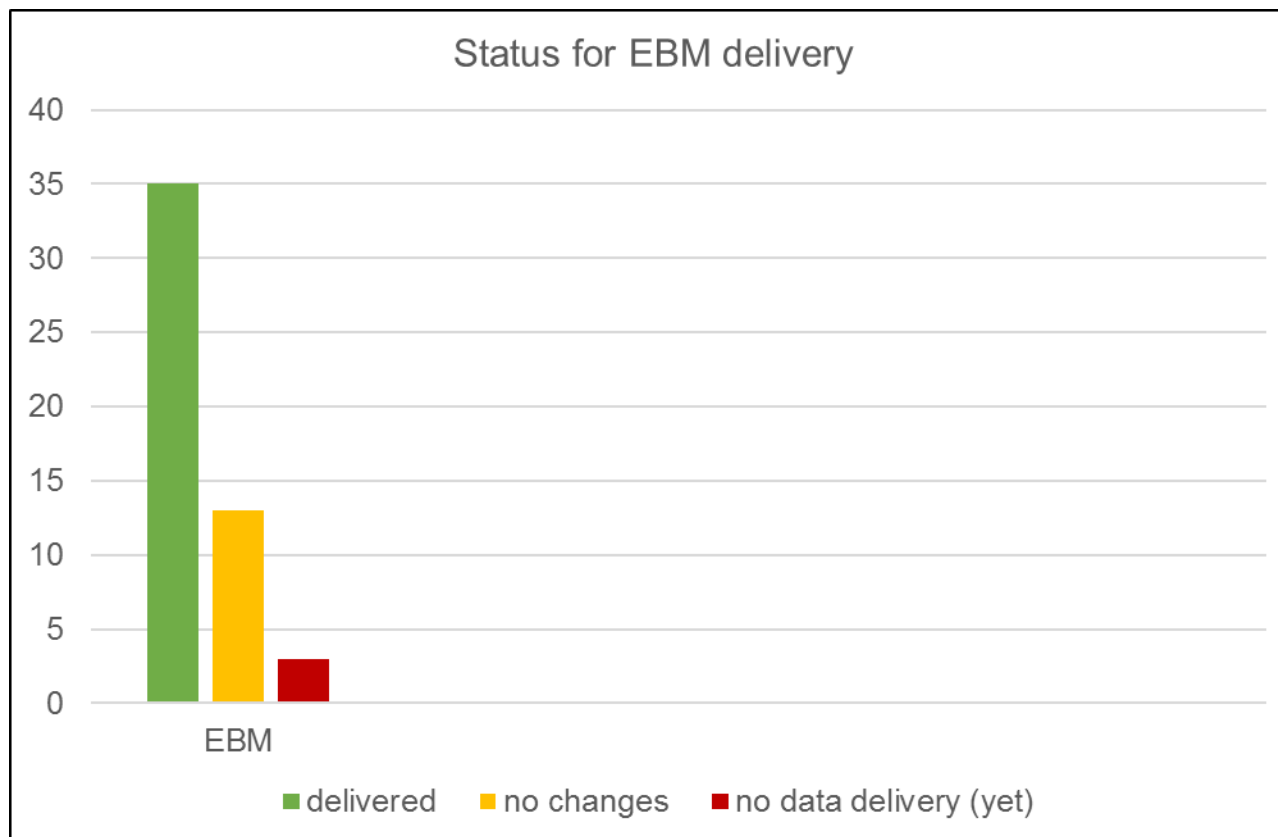


EBM v11

- Reference date: **1.1.2016**

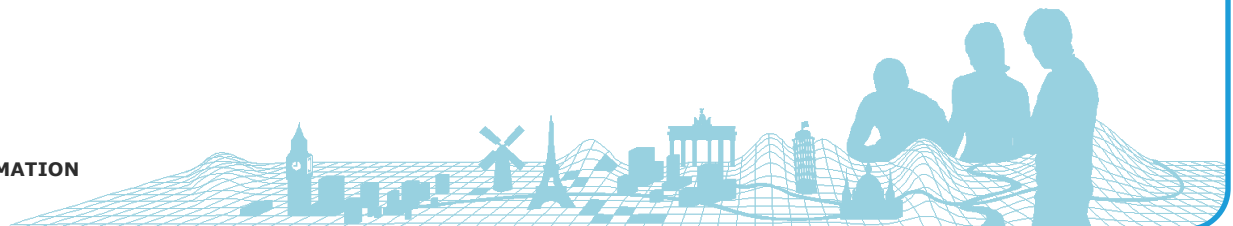
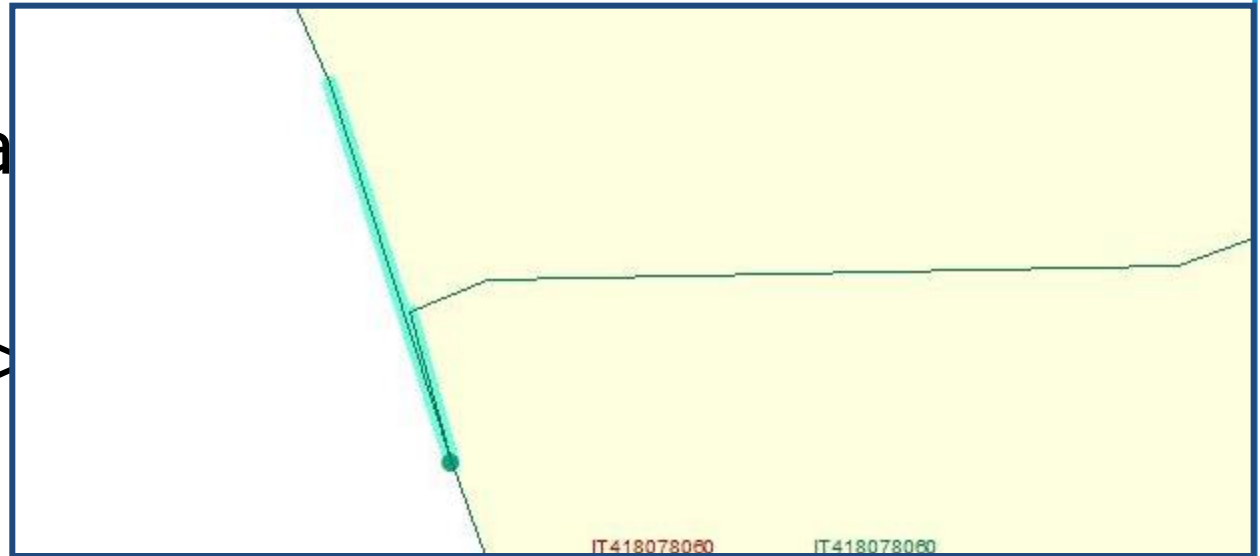


Delivery status EBM (delivery date 30th June)

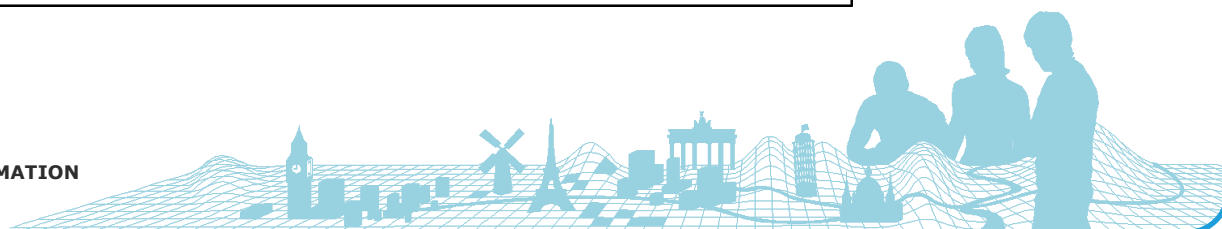
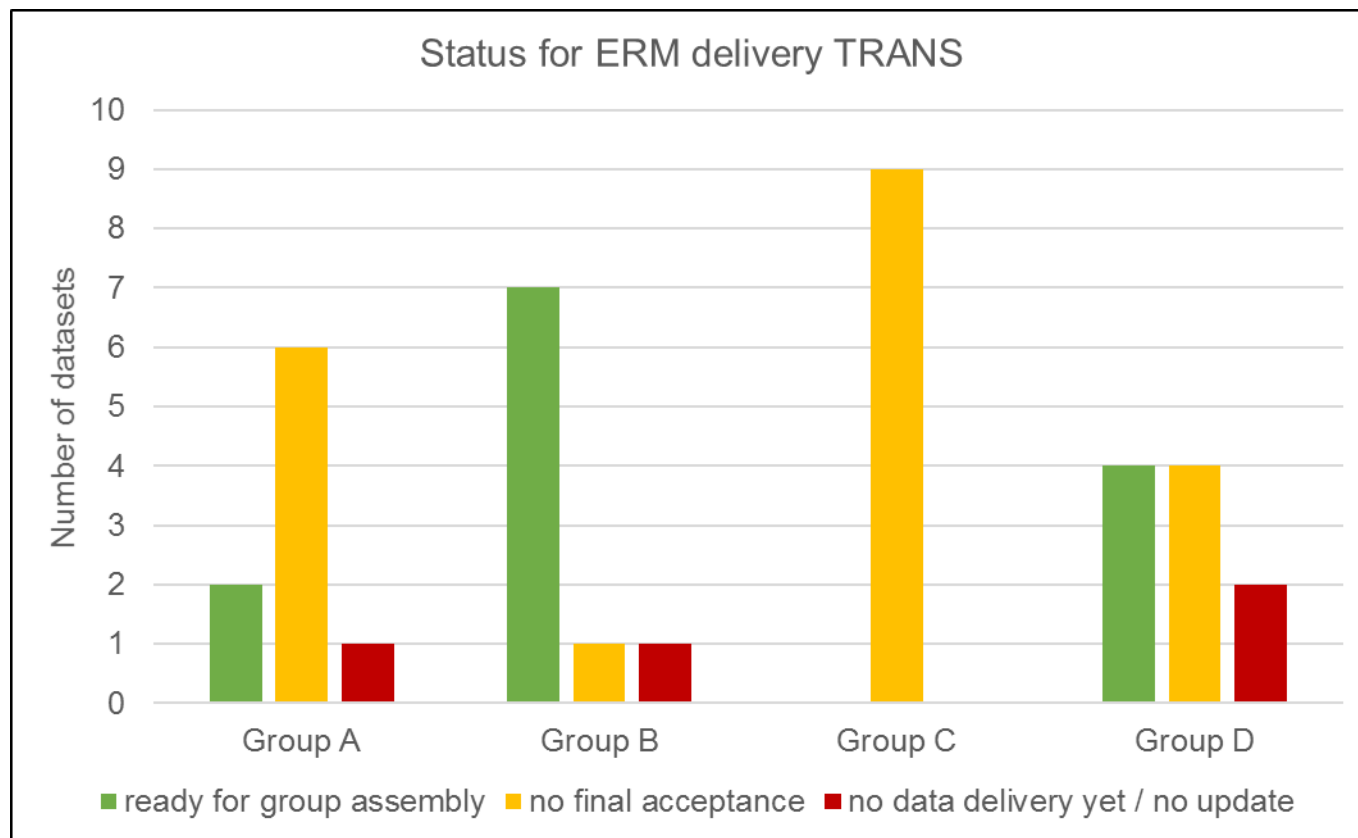


Open issues

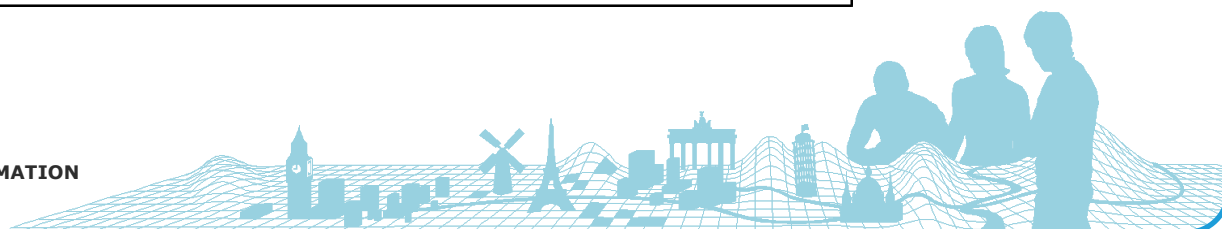
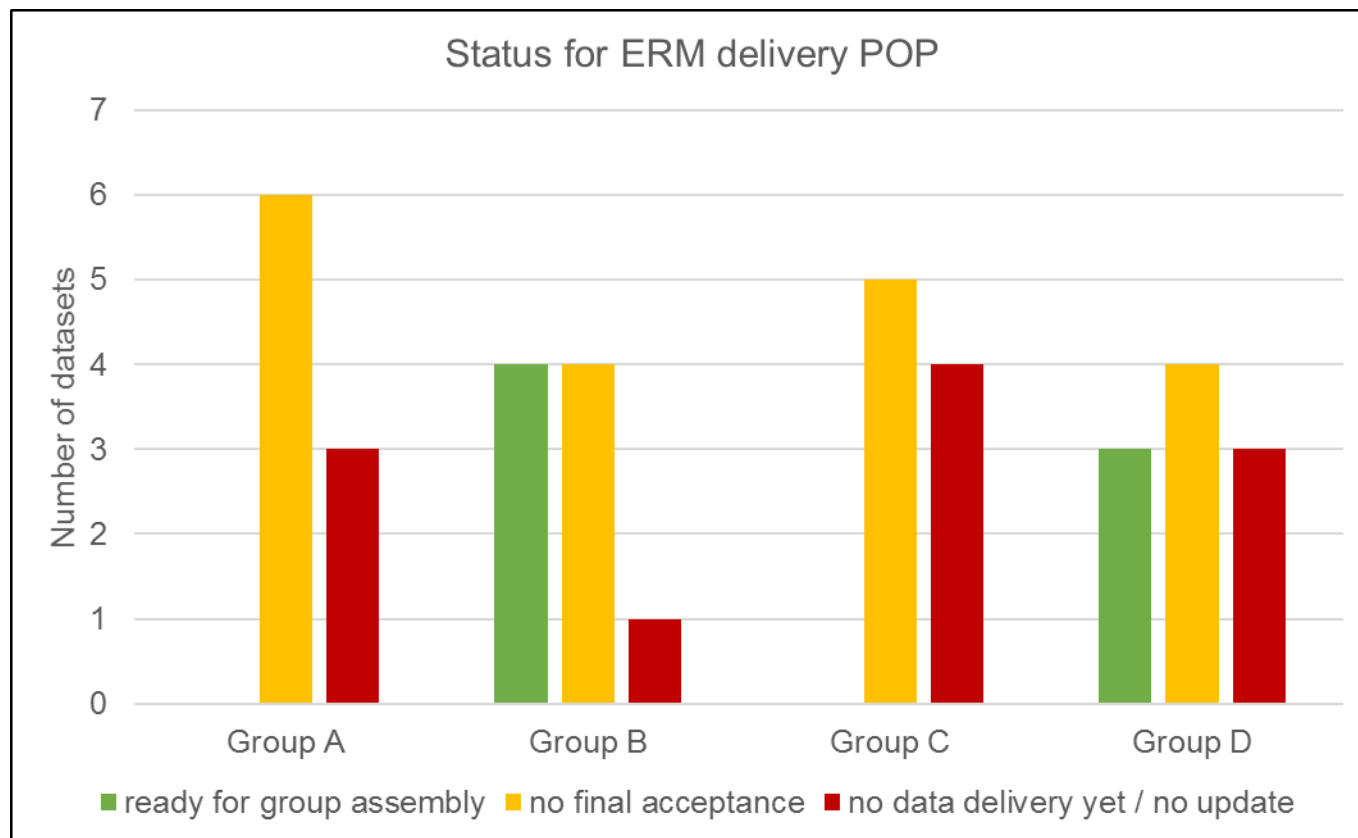
- Reference date
 - Changes should be between 01.01.2015 and 01.01.2016 -> effective Date
- Areas <4ha
- Cutbacks -> points



Delivery status TRANS (delivery date 15th June)

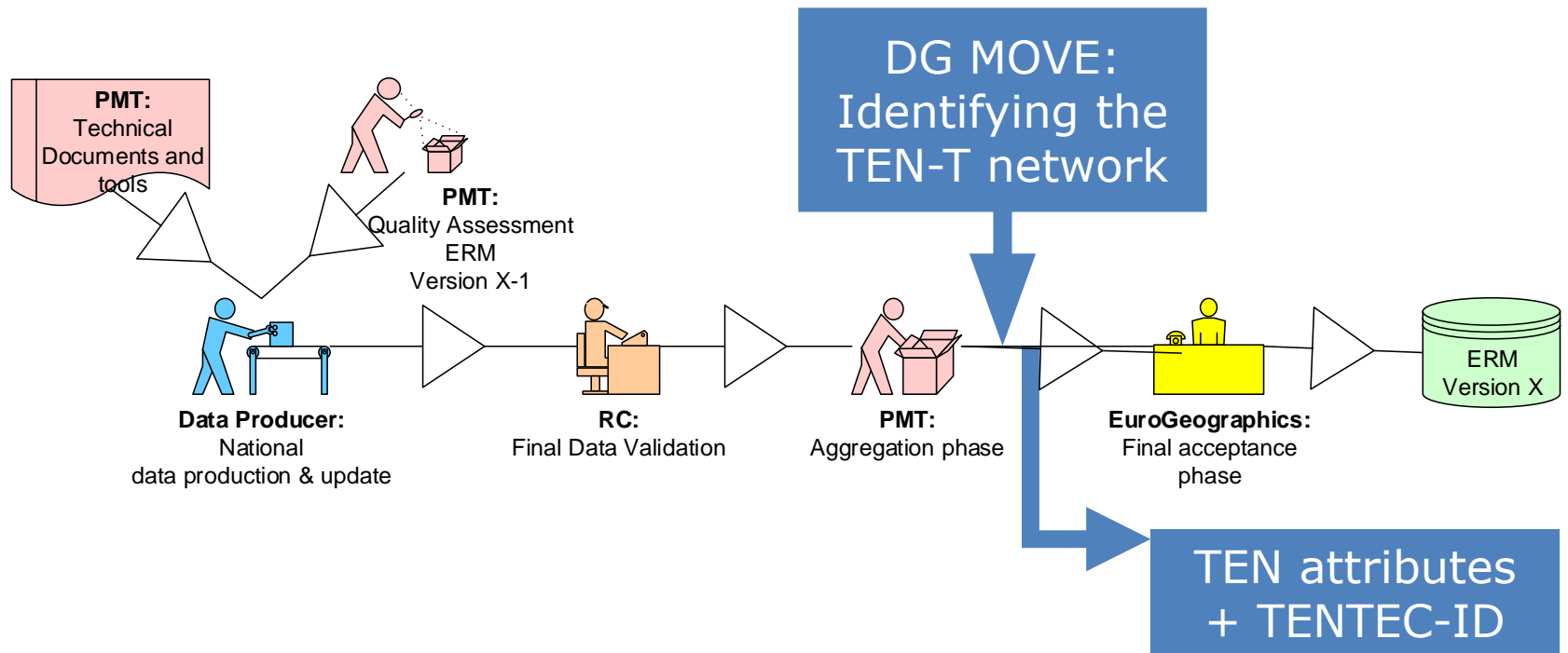


Delivery status POP (delivery date 30th August)



Change in the ERM production workflow

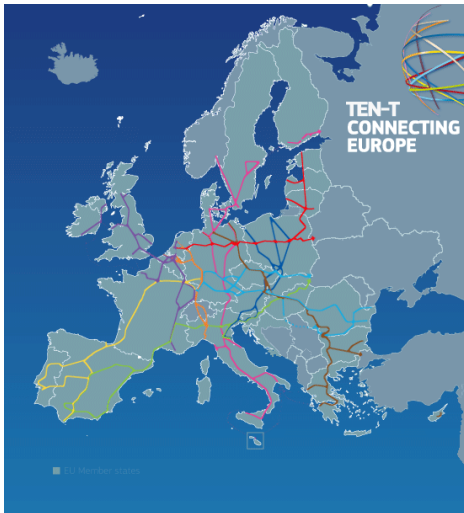
- New producer: Directorate-General for Mobility and Transport (DG MOVE)



TEN-T network



- Every 2 years, a revision of the TEN-T network is foreseen by the legislation
→ TEN-T network will slightly change



- BKG sent HYDRO theme to DG Move in July 2016
- After producer meeting PMT will contact DG Move to coordinate next steps (delivery of TRANS)

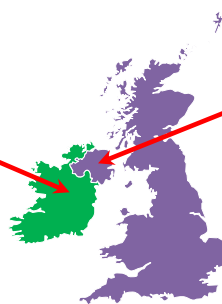


Tasks till delivery to Eurostat (Jan 2017)

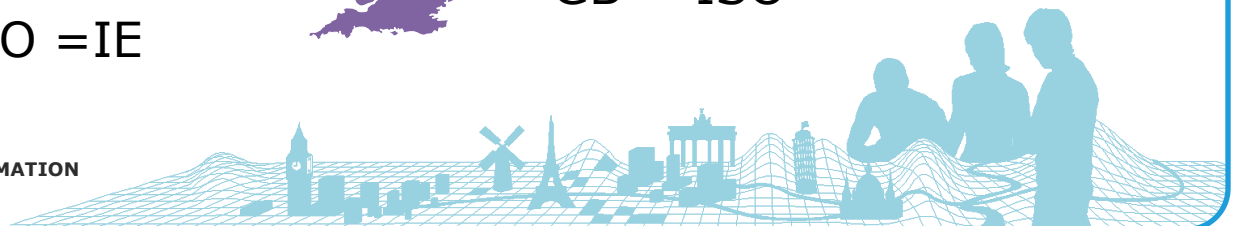
- Regional Coordinators:
 - Validation of datasets
 - Assembling of groups
- Production Manager:
 - Aggregation of all groups
 - Validation and finalisation
 - Provide lookup table for ICC-Codes to Eurostat



Ireland
EuroGeographics = IE
Eurostat = IE
ISO = IE



Northern Ireland
ND = EuroGeographics
UK = Eurostat
GB = ISO

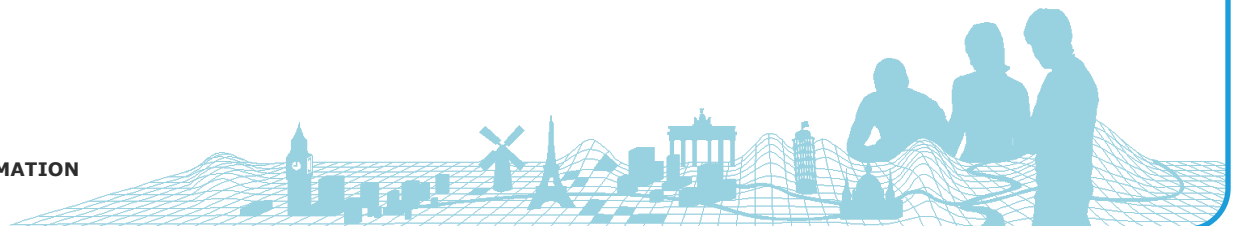


Themes for ERM Production 2017

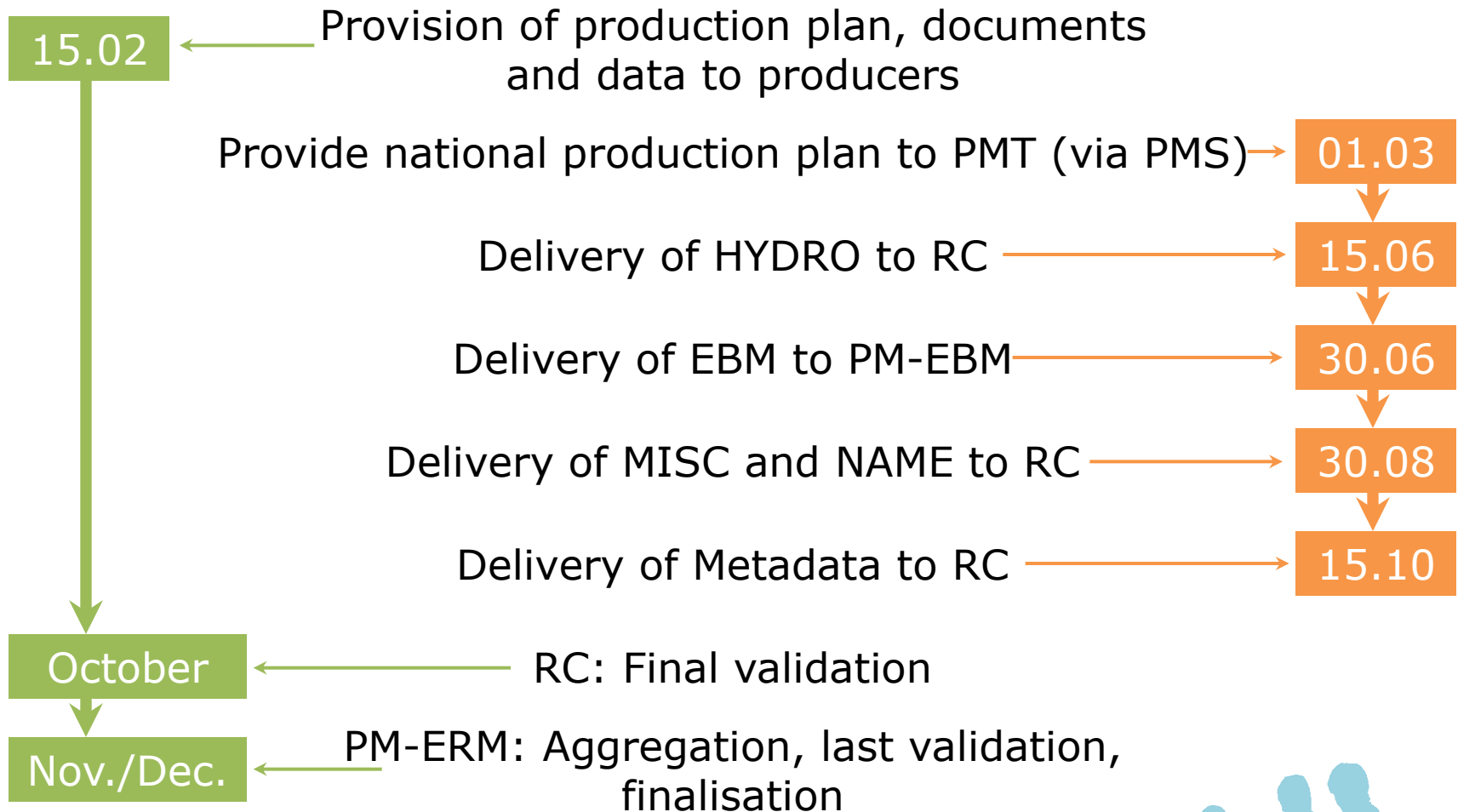
- BND
 - Consistency with EBM update
 - Countries with differences between EBM and ERM: Iceland, Republic of Moldova, Romania, Sweden, United Kingdom, Finland (?)
- Real update
 - HYDRO
 - MISC
 - NAME

Update of other themes?

- Will not be validated by RC
- Will not be included in ERM v11

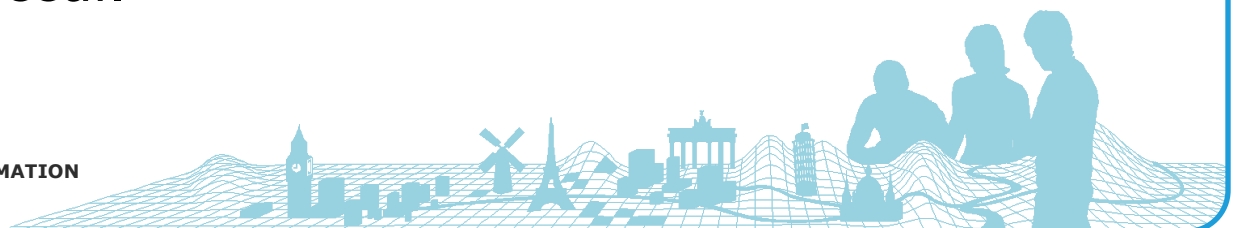


Timetable for Production of EBM and ERM 2017



EBM v12

- The production of the next update will be carried out in the usual workflow.
- The reference date of EBM v12 is 1.1.2017.
- The data model and all documents are kept stable. There are no new requirements.
- NMCAs have to update the following content of the EBM database:
 - Feature class **EBM_A** – basic EBM geometry
 - Table **EBM_NAM** – basic EBM attribution
 - Feature class **ResidenceOfAuthority**
 - Table **EBM_NUTS**
 - Table **EBM_ISN**
- NMCAs shall deliver only those feature classes or tables, where changes occur.

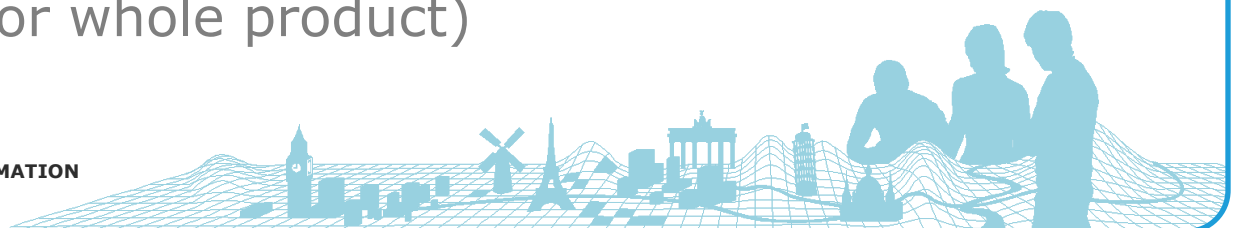


ERM Technical Documents

- ERM Production Plan
 - ERM Technical Guide
 - ERM Producer Specification
 - ERM Validation Specification
 - ERM Edge Matching Rules
 - ERM Tasks at European Level
 - ERM Database Templates (Data Model, Topology Rules)
 - ERM Metadata Templates for Producers
- FTP server: <ftp://ftp.bkg.bund.de>

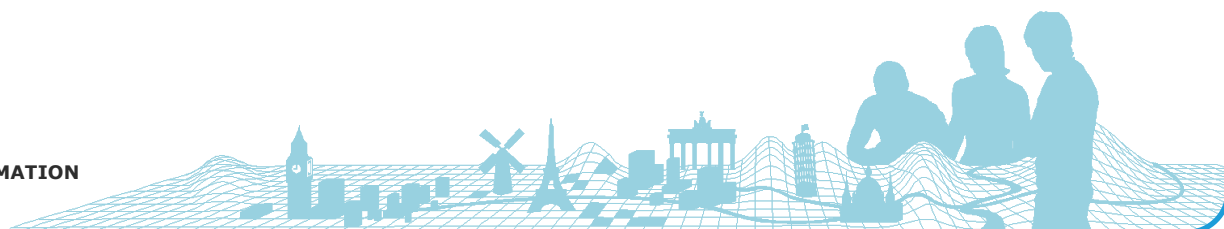


- ERM Eurostat Specification
- ERM User Specification
- ERM User Guide
- ERM Metadata (for whole product)



ERM v11

- Changes in data specification and data model for ERM v11 (TENTEC-ID)
- ERM Master database with features located on international boundary



Thank you for your attention



Contact:

Jürgen Spradau and Regine Elling

Federal Agency for Cartography and Geodesy

Richard-Strauss-Allee 11

60598 Frankfurt am Main / Germany

Email: ebm@bkg.bund.de

