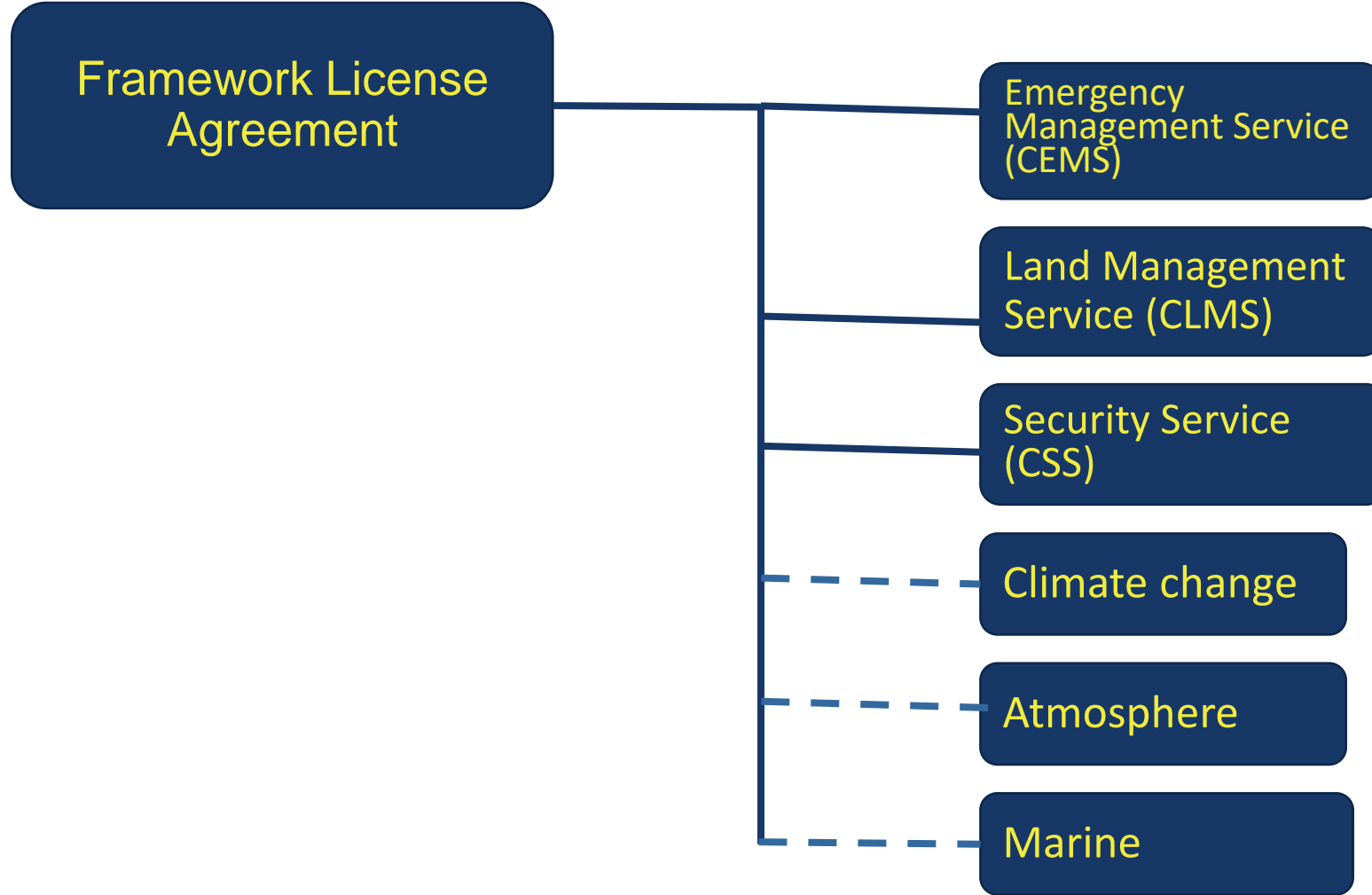


Members data to support the Copernicus Land & Security Services

Angela Baker, Programme Manager

Join at
slido.com
#EG-WS22-09





Copernicus Land Monitoring Service (CLMS) – Annex 2

Annex 2

1 Purpose of this Annex

- 1.1 The Parties have entered into a Copernicus Services Framework Agreement, the "Agreement" on [.....]. Under this Agreement, the Member grants a license to EuroGeographics to use, apply and exploit authoritative Geospatial Data for the Copernicus Land Monitoring Service. There will be a sublicense to the EEA. The EEA will only be allowed to sub license to entrusted entities for the management and implementation of the Copernicus Land Monitoring Services in the framework of the Copernicus Services and in accordance with this Annex.
- 1.2 The relationship between the Parties is governed by the Agreement, as completed by this Annex, which forms an integral part of the Agreement. The terms defined in the Agreement have the same meaning in this Annex. In case of discrepancies between the Agreement and this Annex, the terms of the Agreement will prevail.
- 1.3 With this Annex, the Parties agree to enable the access and use of authoritative Geospatial Data for the Copernicus Land Monitoring Service (CLMS).

2 Access to and use of Geospatial Data for the CLMS

2.1 Access to the following data will be granted:

- ☐ orthophotos, accuracy = to or better than 0,5 m
- ☐ digital elevation models (DEM) with a resolution of 1m – 25m (accuracy: horizontal CE90: 1m-25m; vertical LE90: 1-10m)
- ☐ soil type and subsoil information
- ☐ ground control points
- ☐ land use / land cover
- ☐ land parcel identification system (LPIS) data
- ☐ raster topographical maps 1:50 000 or larger
- georeferenced datasets in vector format with an accuracy equivalent to a scale of 1:50 000 or larger (please select all you give permission for)
 - o ☐ administrative boundaries
 - o ☐ shoreline
 - o ☐ transportation infrastructure including roads and railway network
 - o ☐ built up areas
 - o ☐ toponyms / place names
 - o ☐ hydrography

- the Member grants a license to EuroGeographics to **use, apply and exploit** authoritative Geospatial Data for the **Copernicus Land Monitoring Service**.
- The EEA will **only be allowed to sub license to entrusted entities** for the management and implementation of the Copernicus Land Monitoring Services in the framework of the Copernicus Services and in accordance with this Annex

CLMS Data

- orthophotos, accuracy = to or better than 0,5 m
- digital elevation models (DEM) with a resolution of 1m – 25m (accuracy: horizontal CE90: 1m-25m; vertical LE90: 1-10m)
- soil type and subsoil information
- ground control points
- land use / land cover
- land parcel identification system (LPIS) data
- raster topographical maps 1:50 000 or larger

Georeferenced datasets in vector format with an accuracy equivalent to a scale of 1:50 000 or larger:

- administrative boundaries
- shoreline
- transportation infrastructure including roads and railway network
- built up areas
- toponyms / place names
- hydrography
- buildings
- addresses
- cadastral parcels

CLMS Terms of use

- CLMS providers' right to use national geospatial reference data shall be **limited to the purpose of creating and validating CLMS data and services**
- original national geospatial reference data will **not be available for extraction and reconstruction by end-users from information included in CLMS products** unless such data are made openly available
- when national geospatial reference data is used by the CLMS providers, the source of the data shall be credited
- no other use or dissemination of national geospatial reference data is allowed

Copernicus Security Service – Annex 3

Annex 3

1 Purpose of this Annex

- 1.1 The Parties have entered into a Copernicus Services Framework Agreement, the 'Agreement' on [...]. Under this Agreement, the Member grants a license to EuroGeographics to use, apply and exploit authoritative Geospatial Data for the Copernicus Security Services. There will be a sublicense to the EEA. The EEA will only be allowed to sub license to entrusted entities for the management and implementation of the Copernicus Security Services in the framework of the Copernicus Services and in accordance with this Annex.
- 1.2 The relationship between the Parties is governed by the Agreement, as completed by this Annex, which forms an integral part of the Agreement. The terms defined in the Agreement have the same meaning in this Annex. In case of discrepancies between the Agreement and this Annex, the terms of the Agreement will prevail.
- 1.3 With this Annex, the Parties agree to enable the access and use of authoritative Geospatial Data for the Copernicus Security Services (CSS).

2 Access to and use of Geospatial Data for the CSS

- 2.1 Access to the following data will be granted:
 - ☐ orthophotos, accuracy = to or better than 0,5 m
 - ☐ digital elevation models (DEM) with a resolution of 1m – 25m (accuracy: horizontal CE90: 1m-25m; vertical LE90: 1-10m)
 - ☐ land use / land cover
 - ☐ population data
 - ☐ population distribution
 - ☐ raster topographical maps 1:50 000 or larger
 - georeferenced datasets in vector format with an accuracy equivalent to a scale of 1:50 000 or larger (please select all you give permission for)
 - o ☐ administrative boundaries
 - o ☐ transportation infrastructure including roads and railway network
 - o ☐ built up areas
 - o ☐ toponyms / place names
 - o ☐ hydrography
 - o ☐ buildings

- the Member grants a license to EuroGeographics to **use, apply and exploit** authoritative Geospatial Data for the **Copernicus Security Service**.
- The EEA will **only be allowed to sub license to entrusted entities** for the management and implementation of the Copernicus Security Services in the framework of the Copernicus Services and in accordance with this Annex

CSS Data

- orthophotos, accuracy = to or better than 0,5 m
- digital elevation models (DEM) with a resolution of 1m – 25m (accuracy: horizontal CE90: 1m-25m; vertical LE90: 1-10m)
- land use / land cover
- population data
- population distribution
- raster topographical maps 1:50 000 or larger

georeferenced datasets in vector format with an accuracy equivalent to a scale of 1:50 000 or larger:

- administrative boundaries
- transportation infrastructure including roads and railway network
- built up areas
- toponyms / place names
- hydrography
- buildings
- addresses
- cadastral parcels
- bathymetry
- utility and governmental services infrastructure
- harbour infrastructure
- production and industrial facilities

CSS Terms of Use

- the CSS provider's right to use national geospatial reference data shall be **limited to the purpose of creating and validating CSS products, data and services**
- original national geospatial reference data will **not be available for extraction and reconstruction by end-users from information included in CSS** products **unless such data are made openly available**
- when national geospatial reference data is used by the CSS service providers the source of the data shall be credited
- no other use or dissemination of national geospatial reference data is allowed

Next steps

- Please complete the slido poll by end of Monday 4th July
- We will have the annexes reviewed by our legal support
- Final versions will be sent out to all PC's for signature

Thank you

Join at
slido.com
#EG-WS22-09

