

ORDNANCE SURVEY

A new era of National Mapping Services in Great Britain



SEE ► BETTER PLACE

Who we are

- Ordnance Survey is Great Britain's national mapping agency
- 1200 staff, including 200 specialist surveyors
- Our trusted location data has woven itself into the very fabric of everyday life, right across Great Britain
- Delivering a critical public task alongside commercial data, infrastructure and service propositions
- Our expertise supports international governments to establish and develop geospatial infrastructure
- Alongside the UK's Geospatial Commission and other Partner Bodies, we are proud to help underpin Great Britain's reputation as a world-leading geospatial nation

THINK CUSTOMER

THRIVE TOGETHER

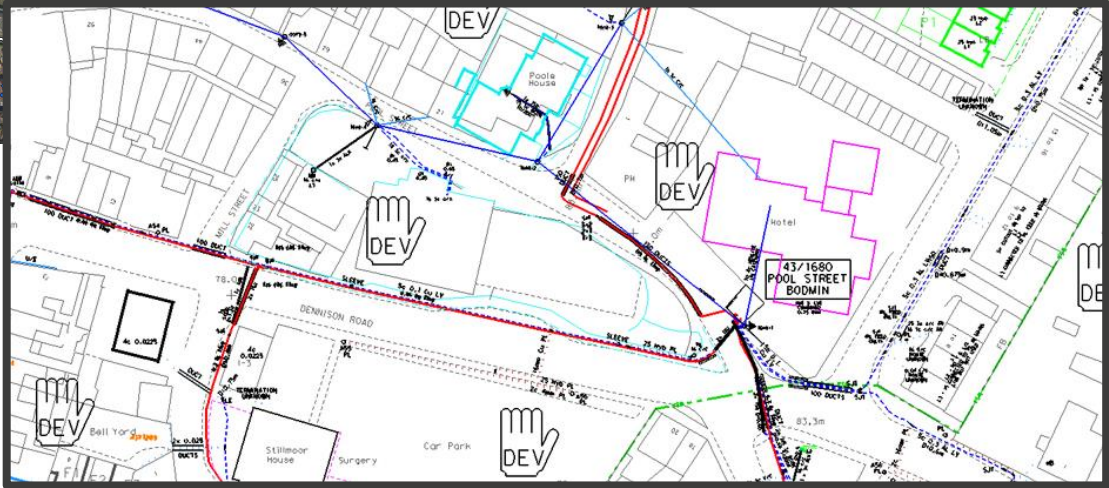
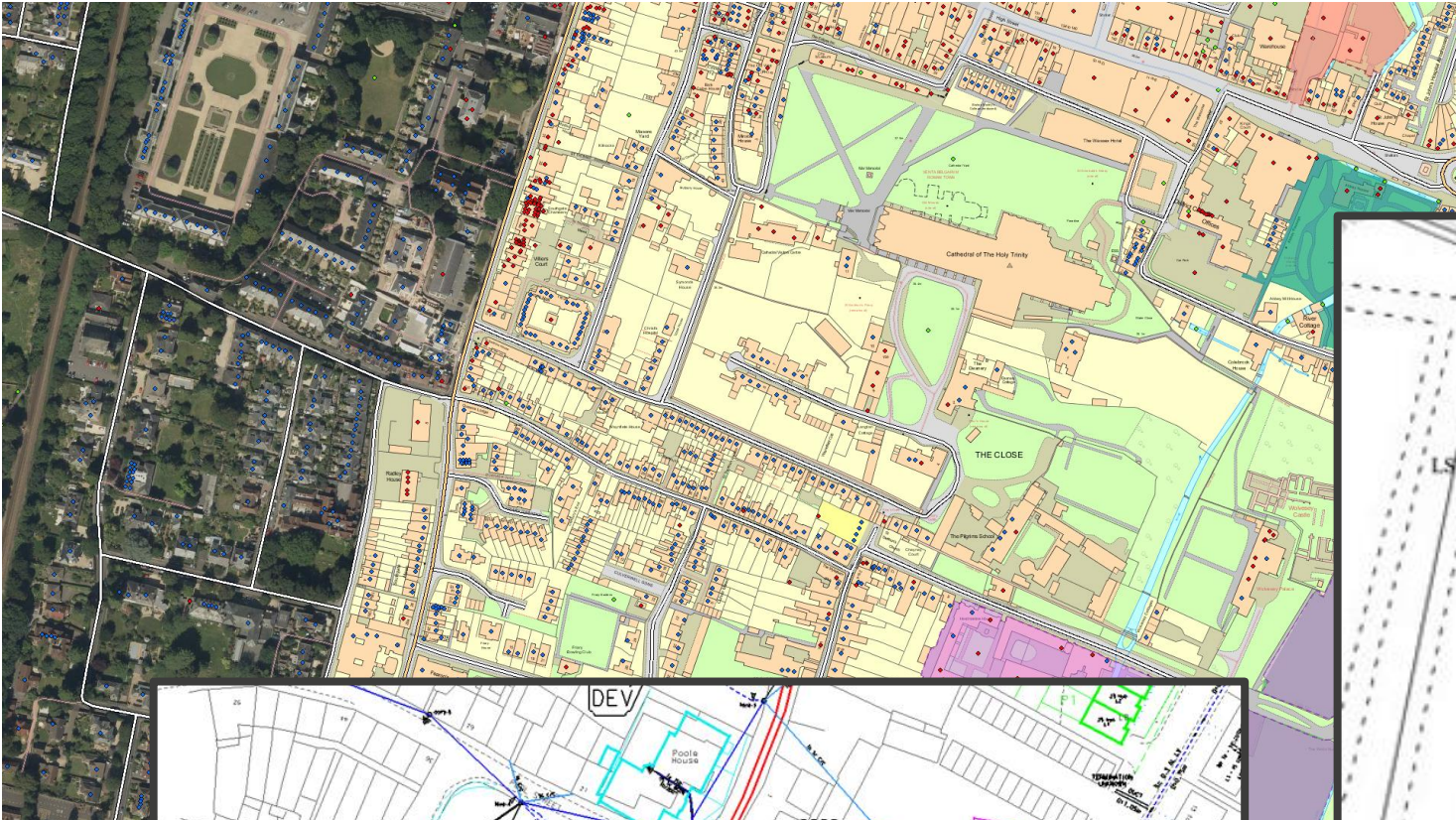
STAY AHEAD

SEIZE THE MOMENT

What we do

- We create, maintain and disseminate consistent, definitive and authoritative geospatial and cartographic data and products of Great Britain in the national interest.
- All 243,241 square kilometres are maintained in the master map of Great Britain and up to 20,000 changes are recorded in the database daily.
- We support business and governments to use location data more intelligently and help the development of a 'smarter' more connected world

Underpinning land registration and critical national infrastructure(s)





Keeping Britain active

We make outdoor activity enjoyable, accessible and safe. We inspire people to get outside, find new places and enjoy their leisure time - promoting physical and mental wellbeing.

Our Public Task


- We provide advice and support to the UK Government on all aspects of survey, mapping and geographic information.
- We maintain and develop the underlying physical infrastructure which is needed to support mapping applications.
- We create, maintain and provide governance for the National Geographic Database (NGD) made up of geographic information datasets with coverage of all of Great Britain to a consistent specification.
- We make the content of the relevant datasets widely available as products which can be used by customers of all types.



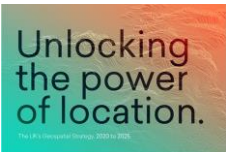
The Geospatial Commission

Ordnance Survey is one of six key partner bodies that make up the expert Geospatial Commission that:


- sets the UK's geospatial strategy
- puts location data at the heart of the future UK economy
- promotes the best use of geospatial data and maximise its economic value

**Geospatial Commission**

Formed in 2018 to ensure the UK makes best use of its geospatial assets

**Unlocking the power of location.**
The UK's geospatial strategy 2018 to 2025

The Commission have published the UK's first geospatial strategy in 10 years

**National Data Strategy**

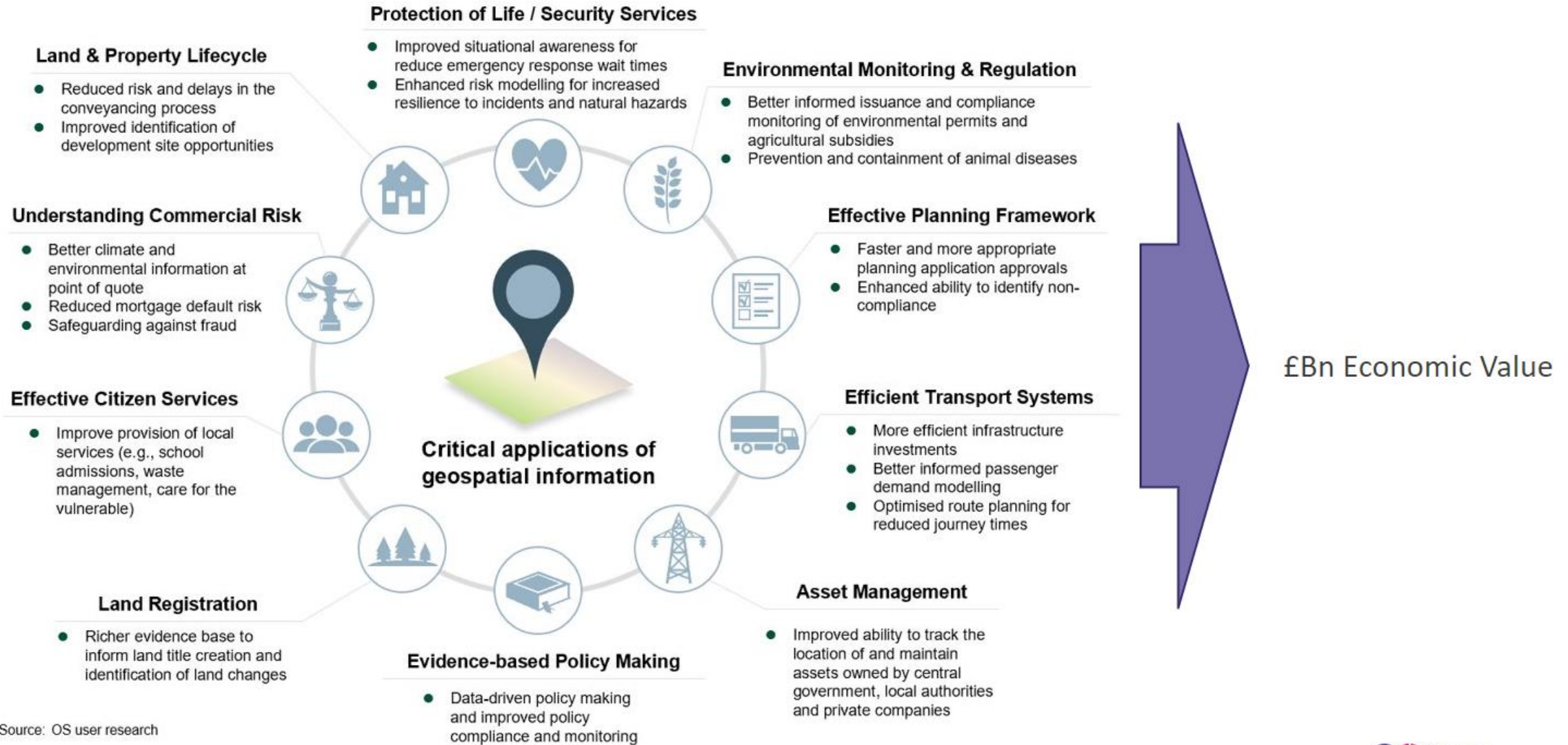
Linked to a new national data strategy and rapidly changing policy landscape





THE PSGA

Ordnance Survey's geospatial data underpins many use cases which are fundamental to the economy, the environment and wider society

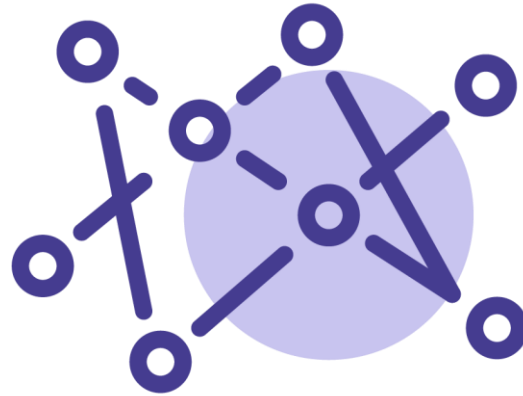


Source: OS user research

Development of National Mapping Services



New, richer data



New ways to access our
data



New freedoms to share
data

An aerial photograph of a suburban neighborhood at sunset. The sun is low on the horizon, casting a warm, golden glow over the scene. The sky is filled with soft, orange and pink clouds. Below, a dense residential area with rows of houses and green lawns is visible, interspersed with trees. In the distance, a larger building complex, possibly a school or government building, stands out against the landscape.

Responding to customer needs

New, richer data

- New data insight opens up analysis for better policy making and commercial opportunities
- Increased currency for often-needed data points

New access to data

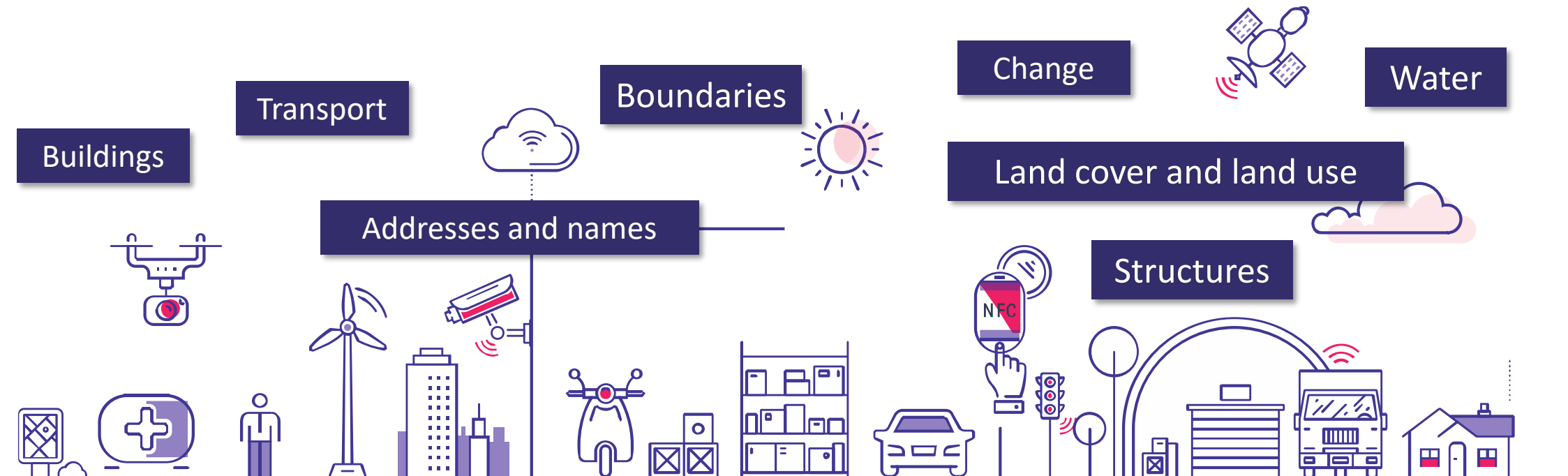
- Free access to rich data for developers to design products and services
- Better options for today's customer – with single sign-in, online payments, and community feedback to improve our data

New freedoms to share data

- Lowers cost and access barriers with our products and APIs.
- New licensing so third parties can make data available under open terms in their products and services

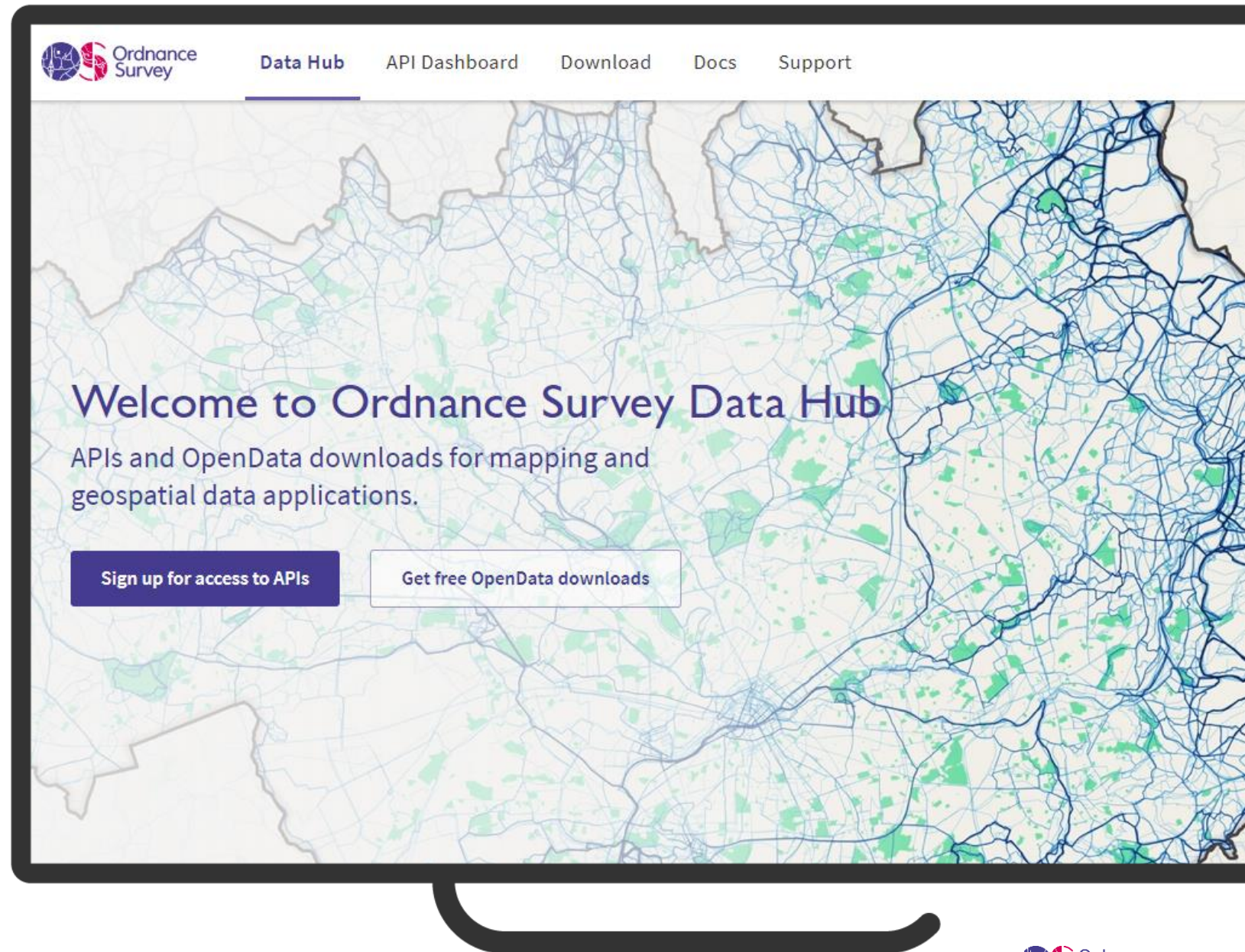
New, richer data into the National Geographic Database

We're expanding OS data to create a deeper and richer picture of built and natural environments. It helps our customers draw new insight from information such as the age of buildings and rural land classification.



OS Data Hub

Supporting the public and private sectors vital infrastructure and services by making it easier for anyone to find, access and use authoritative geospatial data.



User Personas



Supporting Developers

Supporting developers:

- Tools on using different data layers
- Guidance on GIS application
- Provision of data through APIs
- The use of premium data in 'development mode'
- Access to Developer Portal on OS website
- Contact available with an OS Developer Advocate
- Access to the Geovation Hub



OS API plans & free thresholds

Free OS OpenData	Premium	Premium
OS OpenData Plan Free OS OpenData	Premium Plan OpenData and Premium data	Public sector plan OpenData and Premium data for PSGA members
<ul style="list-style-type: none">✓ OS OpenData APIs (unlimited access)³✗ Premium data APIs (paid-for data)✗ Development mode✓ Free for creating apps, products and services for 3rd parties including the public✓ Free for internal business use	<ul style="list-style-type: none">✓ OS OpenData APIs (unlimited access)³✓ Premium data APIs (paid-for data)^{2,3}✓ Up to £1,000 of free premium data every month⁴✓ Unlimited free Premium data for projects in <i>development mode</i>⁵✓ For creating apps, products and services for 3rd parties including the public¹✗ Internal business use.¹	<ul style="list-style-type: none">✓ OS OpenData APIs (unlimited access)³✓ Premium data APIs (unlimited access)✓ Unlimited Premium data downloads (coming soon)✓ Can be used internally for core business
Sign up	Start for free	Sign up

All our API data (OS OpenData and Premium) are subject to a 600 transactions-per-minute **throttle** for live projects

There is **also** be a free threshold of up to £1,000 pcm for anyone who uses the equivalent premium datasets in the development of their apps, products and services for use by 3rd parties, including the public – **using their own APIs**



LOCATION INSIGHT HELPS THE WORLD
SEE A BETTER PLACE