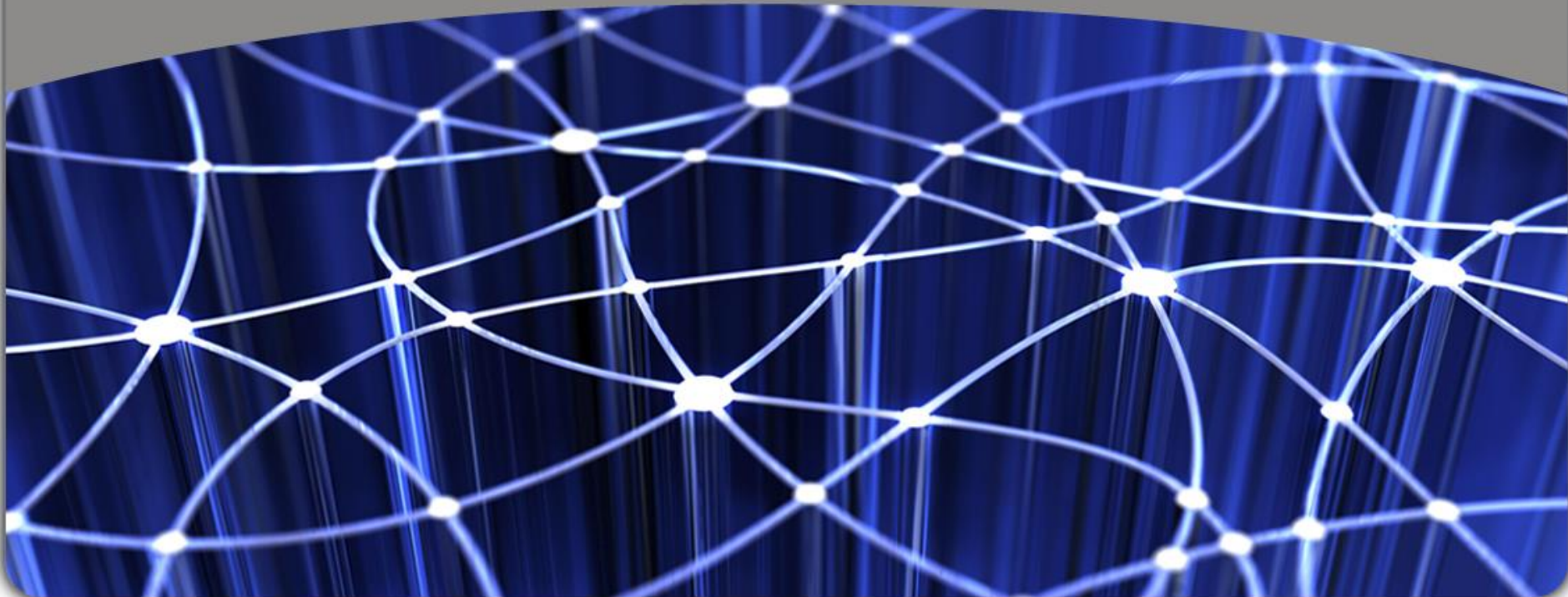




ISA

Interoperability Solutions for European Public Administrations

The new ISA action ELISE and how ELF will be included



## What is the ISA programme?

- ISA, a programme on Interoperability Solutions for European Public Administrations
- ISA supports and facilitates efficient and effective cross-border electronic collaboration between European public administrations
- The programme enables the delivery of electronic public services and ensures the availability, interoperability, re-use and sharing of common solutions (budget 164,1Mio Euro 2010-2015)
- In the ISA context, interoperability means the facilitation of cross-border and cross-sector information exchange, taking into account legal, organisational, semantic and technical aspects

## Example of ISA actions

- 1.7 Are<sup>3</sup>na
  - To facilitate INSPIRE implementation, the activity will identify re-use tools that are needed
  - Other cross-sector aspects such as re-use of tools and policies for open data will also be included in the activity
  - The activity will establish a platform for reuse of open software and guidelines

## Example of ISA actions

- 2.13 EULF
  - The objective with this activity is to test the idea of an EU-Location Framework (EULF), an EU cross-sector framework for exchange and sharing of spatial data and services
  - The EULF concept is a package of use cases, specifications, recommendations, tutorials and activities to facilitate the implementation, use of INSPIRE in an e-government content
  - New guidelines will be based on INSPIRE
- EULF has also worked together with other initiatives that are co financed by the Commission, e.g. ELF and eENVplus to ensure that conformity, it was also planned to contribute with analyses and best practice of the result from UN-GGIM Europa

## ARE3NA and EULF solutions developed as part of ISA

Completed

In progress

### STUDIES

EULF state of play  
assessment

EULF and ARE3NA  
Policy analysis

Input to INSPIRE  
policy evaluation

EULF ISA  
integration plan

EULF Energy  
Feasibility Study

### TOOLS

EULF Vision

References and  
inventories

ARE3NA Reference  
Platform prototype

PID governance  
model

Implementation  
vocabulary

EULF Blueprint  
Overview

Best Practices and  
Case Studies

Re3gistry  
prototype /  
federation

ARE3NA Pilots:  
GeoDCAT-AP, AAA,  
INSPIRE RDF

Geo open data  
licensing

EULF Guidelines:  
e.g. Procurement,  
Standards

EULF Benefits  
Approach

SOS tools,  
guidelines and  
demo

CTS software

ARE3NA workflows  
and tools

### APPS

EULF  
Transportation  
Pilot

EULF Marine Pilot

EULF Energy Pilot

### SERVICES

EULF and ARE3NA  
training

Benefit realisation

## ISA Working Group on Spatial Information and Services

- Advisory group
- Define requirements and gives inputs regarding priorities on the ISA program (geographic information and services)
- Facilitate the dialogue between e-government and the geospatial community, especial between ISA and INSPIRE



## ISA<sup>2</sup>

- In September 2015 it was agreed to continue the work within ISA, €131 million that will help modernise European public administrations and provide interoperable digital services
  - It will ensure seamless electronic cross-border or cross-sector interaction between European public administrations.
  - ISA<sup>2</sup> will support the development of interoperable digital solutions which will be available to all interested public administrations on European, national and regional level, free of charge.
  - By using ISA<sup>2</sup> solutions, administrations can ensure interoperability between different IT-systems responsible for the delivery of electronic services.

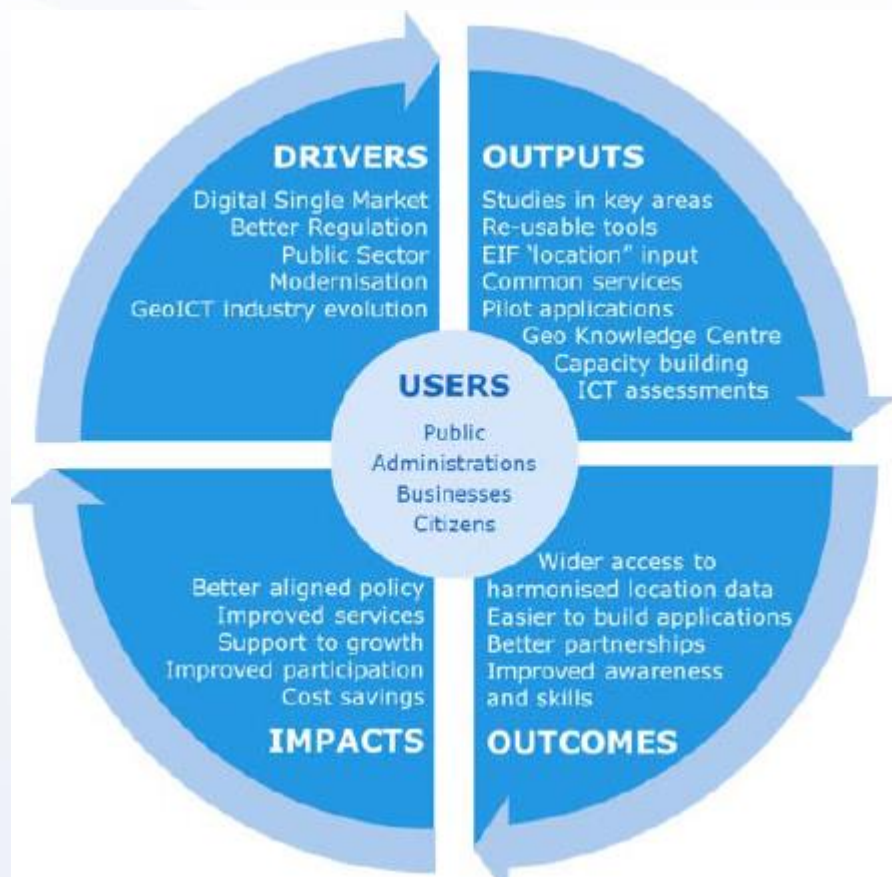
Formal adoption by the Council of the EU and the Parliament is awaited before December

## ELISE

- The European Location Interoperability Solutions for e-Government (ELISE)
- A package of legal/policy, organisational, semantic and technical interoperability solutions to facilitate efficient and effective electronic cross-border or cross-sector interaction between European public administrations and between them and citizens and businesses, in the domain of location information and services, supporting Digital Single Market (DSM), Better Regulation (BR) and Public Sector Modernisation (PSM) goals
- In short; to continue the work within Are<sup>3</sup>na and EULF



## ELISE action



## ELISE

- The PSI Directive, INSPIRE and ISA have started to remove barriers and some Member States (MSs) have introduced important initiatives in this field, for instance related to “base registries” and “open data” policies.
- However, the potential of interoperable location information is only just beginning to be tapped: the implementation of INSPIRE is progressing continuously, new thematic policies are emerging that will benefit from a more harmonised approach, and the relationships with businesses and citizens are key in achieving wider EU goals

## ELISE – the objective

- To provide guidelines and tools for the implementation of the revised and extended European Interoperability Framework (EIF) regarding location information and services
- To help European public administrations remove barriers to the free flow of interoperable location data, and build more effective location enabled e-government services
- To support Better Regulation goals by promoting a coherent and consistent approach to the sharing and re-use of location information in EU policies

# ELISE work packages and outputs

## STUDIES

1.1 DSM  
assessment and  
plan

1.2 Pilot feasibility  
studies  
(where needed)

## TOOLS

2.1 Guidance: DSM,  
spatial modelling,  
INSPIRE adoption

2.3 References and  
inventories

2.6 ARE3NA  
Reference Platform

2.9 Common  
services: EU  
gazetteer pilot

2.2 Standards and  
Specifications

2.4 'Location'  
architecture and  
cartography

2.7 Re3gistry

2.10 Common  
services: Open EU  
mapping pilot

2.5 Best practice  
factsheets

2.8 Interoperability  
and Usability  
Testbeds

2.11 Common  
services: Address  
registries pilot

## APPS

3.1 BR pilots:  
thematic, statistics

3.2 Member State  
PSM pilot: best  
practice reuse

3.3 DSM / Business  
pilot: using open  
data

## SERVICES

4.1 Demand and  
opportunity  
analysis

4.2 Geo Knowledge  
Base: ICT/IOM  
assessments, advice,  
awareness/training

4.3 Benefit  
realisation

4.4 Operational  
handover

## ELISE will also re-use and promote solutions from other EU and national initiatives, including:

- a) identifying best practice re-usable components, applications or services and sharing either information about the solutions (e.g. through factsheets) or the solutions themselves;
- b) reusing solutions in pilot applications and common services, building on other EU-funded or national projects (e.g. European Location Framework services and tools, GeoSmartCity developments in energy efficiency, Belgian approach to OpenStreetMap, Danish and Czech Republic approaches to core registries, Danish cross-border addressing approach);
- c) combining approaches in other projects and initiatives with ELISE activities to establish user-focused, sustainable solutions (e.g. working with ELF on feasibility studies and pilots for common services; reusing methodologies from UN-GGIM: Europe and Geostat2 to integrate statistical and geospatial information in ELISE guidance and a statistical pilot application);
- d) re-using legal and organisational assets, e.g. licensing frameworks, open data frameworks, business cases, public private partnership models, training modules, videos

## ELISE and ELF

- Pilot feasibility studies
  - Studies to assess requirements, potential options, possible data transformation and implementation costs, and benefits for stakeholders ahead of relevant pilot implementations (i.e. both the “common services” pilots and the “application” pilots).. This will include the assessment of the preoperational **ELF** services in the pilots
- Common services: e.g. EU gazetteer, Open EU mapping, EU address registries
  - Initial release of common services identified as priorities by stakeholders such as an EU gazetteer of geonames, an open seamless cross-border mapping ‘common service’, and an EU address registries service. These services will be based, where possible and following the appropriate assessments, on the pre-operational services resulting from the **ELF** project. The work will include an assessment of the sustainability of the resulting pre-operational services

## ELISE and ELF

- Geospatial Knowledge Base: 'Location' training and awareness raising package
  - Package of awareness and training resources for public administrations, supporting policy awareness, publication and use of interoperable geodata, and development of applications. This will include recommendations for the use, promotion, and sustainability of the ELF knowledge base



## ELISE and ELF - Stakeholders

- Other pan-European interest groups, organisations and projects
  - Collaboration with **ELF** is envisaged in the development of thematic pilots and common services),

## ELISE and ELF - TECHNICAL APPROACH

- Developing priority common services to extend the range of applications significantly
  - Key “common services” for geonames, open mapping and addressing will be developed in conjunction with key partners in MSs and related initiatives such as the European Location Framework (**ELF**) project. These “common services” address priority needs already expressed and once confirmed and requirements refined will provide an infrastructure to support multiple cross-domain and cross-border applications.

## Input from Norway as coordinator of ELF

- “Thus, a large set of common services will exist, many at the start, and more during the lifetime of ELISE. These services are already funded – partly by the Commission partly by the ELF partners. ELF is of course interested in the feasibility of its products, and the project has conducted its own assessments of the project’s products.
- The user feedback from real use of the services will be the best feasibility assessment.
- We suggest the ELISE activity on feasibility studies should take this situation into account, and the proposers to consider whether the resources should be spent otherwise”



ISA

<http://ec.europa.eu/isa/>

Interoperability Solutions for European Public Administrations

European Commission > ISA



Contact ISA

Search the ISA website



Share



ISA<sup>2</sup>

OUR SOLUTIONS

NEWS

EVENTS

ACTIONS

POLICY

LIBRARY

VIEWS ON ISA

FAQ

DASHBOARD



## ISA programme: collaboration beyond e-borders and sectors

Administrative procedures have the reputation of being lengthy, time-consuming and costly. Electronic collaboration between Public administrations can make these procedures quicker, simpler and cheaper for all parties concerned, in particular when transactions need to be done cross-border and/or cross-sector. The ISA programme of the European Commission facilitates such transactions through more than 40 actions with a budget of some EUR 160 million.

Our solutions

Our actions

Our policy

### News



**Public consultation on ICT standards for the Digital Single Market**

05/10/2015

All News

### Events



**The 14th International Semantic Web Conference (ISWC 2015)**

11/10/2015

All events

### Views on ISA



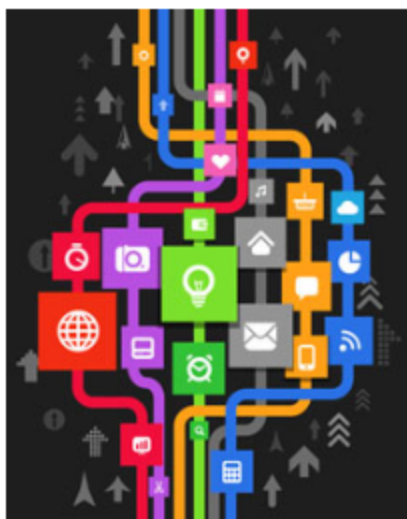
**Interoperability as a driver for Public sector Modernisation, Stephen Quest**

(06/05/15)

Testimonials

## Member news on ISA web site

### Spain begins systematic monitoring of interoperability



**DATAOBSAE**, a national observatory that monitors eGovernment activity in Spain, now has a section in its reports that follows interoperability activity. The new section will monitor interoperability activities through an automated system with several indicators.

As a starting point, the categories included in this new section are organisational interoperability, infrastructure and common services, networking communications of public administrations through the administrative network, sharing and reuse, and electronic certificates and eSignatures. More categories will be included in the near future. The data collected constitutes a first estimation, and may become more detailed as DATAOBSAE evolves.

This new interoperability section can be found at **DATAOBSAE**. The information is available in English and Spanish. Users may select the language in the upper right corner.