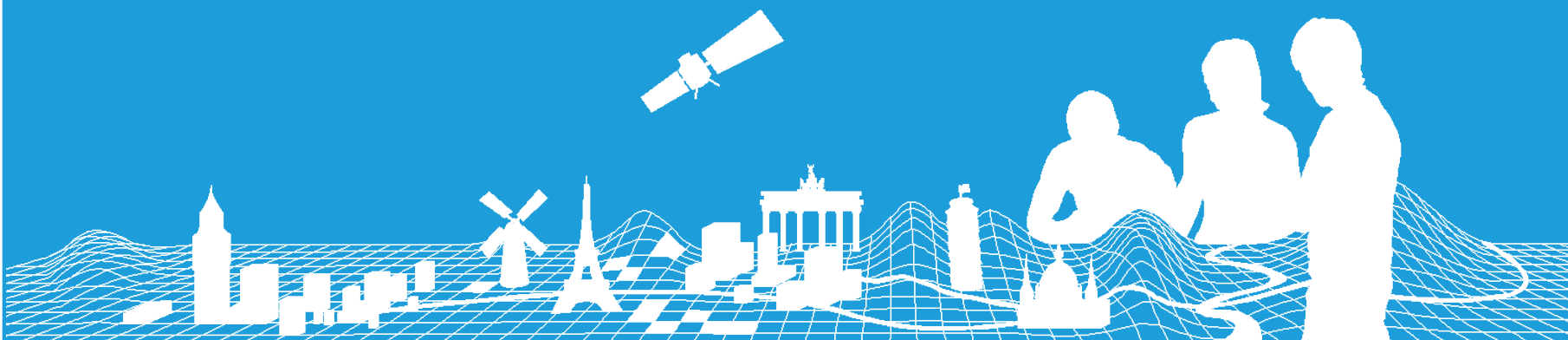


Production 2017 EBM and ERM

Jörgen Spradau and Regine Elling, BKG
Webinar Technical Meeting of the EG Data Producers
13th February 2017



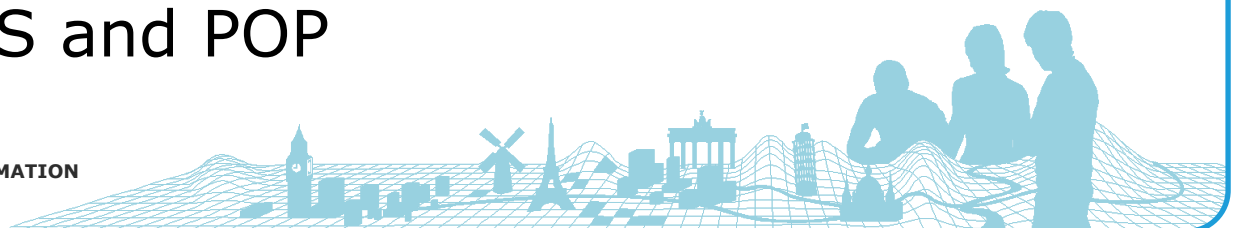
Content

- Review production year 2016
- Production year 2017
- ELF International Boundaries
- Data exchange



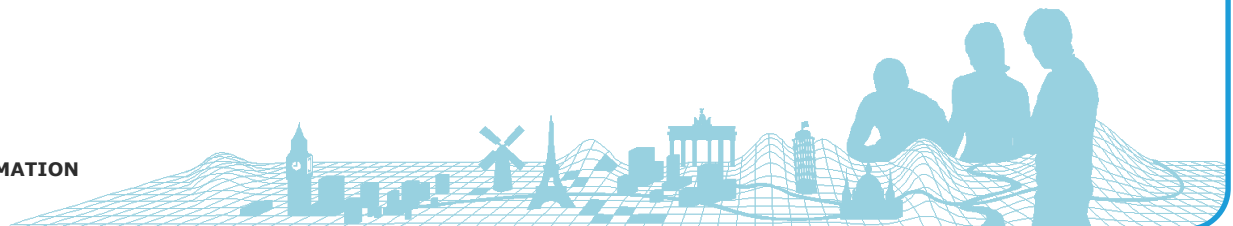
Review production year 2016

- New Production Management Team
 - Jörgen Spradau (EBM Production Manager)
 - Regine Elling (ERM Production Manager)
 - Alexander Reichelt (ERM Technical Manager)
- Change of Regional Manager of group C:
 - Dovilė Rusonytė
- New producer
 - Directorate-General for Mobility and Transport ([DG MOVE](#))
 - [TEN network](#)
- New Production Management System (PMS)
 - <https://ebrm.bkg.bund.de/pms>
- Updated ERM themes
 - BND, TRANS and POP



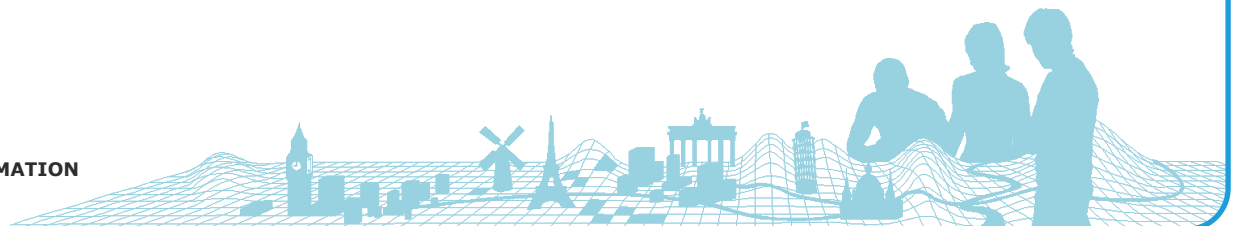
Review production year 2016

- Delivery to Eurostat by 20th January 2017
→ EBM v11 and ERM v10
 - EBM and ERM: Lookup table for ICC-Codes
 - ERM: Updated TEN attribute (DG MOVE)
- Remaining tasks
 - Update TEN attributes with new TEN version (DG MOVE)
 - Provide EBM v11 and ERM v10.1 to data producers and public
 - Provide quality assessment to data producers



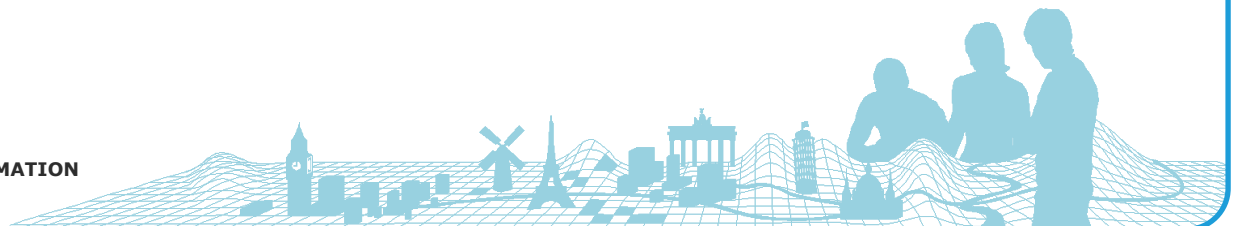
Review production year 2016

- Quality assessment
 - Issues noticed during data assembly
 - EBM vs. ERM
(residence of authority vs. BuiltupP)
 - PMT will contact data producers



Production year 2017

- Production Plan will be send to data producers
 - Combined work plan for EBM, ERM and EGM
 - Describes all deliverables for data producers
- PMS
 - Update contacts
 - Provide information of your production environment
 - Fill in National Production Plan 2017



Production year 2017

EBM, ERM and EGM Production Management System

Hello, BKG Logout

home poll documents meetings actionlist PMT overview settings contact

EG Contact/Product Database. organize the contacts and products

Select a country:

Germany ()

mail to Region Coordinators

mail to all NMCA's

EG Country Code	ISO Country Code	EU Country Code	Name original	Name english	Name english short	Comment
DE	DE	DE	Deutschland	Germany	Germany	

NMCA	Name english	EBM	ERM	EGM
BKG	Federal Agency for Cartography and Geodesy	<input checked="" type="checkbox"/>	<input checked="" type="checkbox"/>	<input checked="" type="checkbox"/>

NMCA EBM - Country Quality Doku EBM - Version Doku ERM - Delivery Status

mail all contacts of NMCA

NMCA: BKG EBM: ☒ ERM: ☒ EGM: ☒

ERM Region: Group A (The Netherlands (Ben))

Name original: Bundesamt für Kartographie und Geodäsie

Name english: Federal Agency for Cartography and Geodesy

Web: www.bkg.bund.de

Comment:

1 2

address 1: Richard-Strauss-Allee 11

address 2:

address 3:

postalcode: 60598

city: Frankfurt am Main

comment:

Country within EG Product

EBM ☒ ERM ☒ EGM ☒
☐ VMap Data

1. Select your country

2. Select your NMCA

Update contact details

contact persons production infos national production plan ERM-Regions Graphic

1 2 3 4 5 6 7 8 9

mail to this contact

Title: Ms

Firstname: Regine Lastname: Elling

Department: Referat G13

Jobtitle:

calling code: +49 location: Frankfurt am Main, Richard-Strauss-Allee 11

phone: 69 6333 346 mobile:

fax: 69 6333 441

mail_1: regine.elling@bkg.bund.de mail_2:

EBM role:

ERM role: National production coordinator (POC)

EGM role:

ERM Region Coordinator:

contact from: 2016 (YYYY) contact until: (YYYY)

comment:

EuroGeographics

CONNECTING YOU TO THE
AUTHORITATIVE GEO-INFORMATION
FRAMEWORK FOR EUROPE

Production year 2017

Contacts

National Production Plan

contact persons **production infos** national production plan ERM-Regions Graphic

GIS: ArcGIS 10.2.1 Exchange Format: fgDB

limit mail attachment: 5 MB

BKG ftp exchange: ☒ Own ftp exchange: ☐

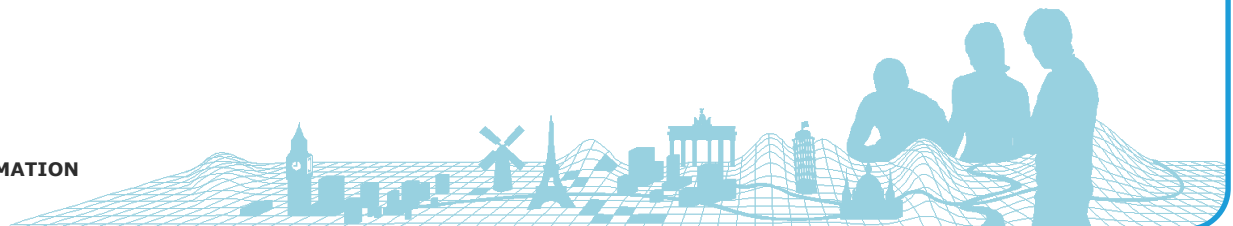
ESRI Data Reviewer: ☒ ESRI Production Mapping: ☒

FME: ☒ Ctools: ☒

other_tools:

comment:

Information about
production environment



Production year 2017

1. Add production plan for 2017

2. Fill in your National Production Plan for 2017

contact persons production infos national production plan ERM-Regions Graphic

2017

add production plan

contact persons production infos national production plan ERM-Regions Graphic

2017 delete selected productionplan

EuroBoundaryMap

The reference date of EBM v12 is 1.1.2017. Can you provide your update according to this reference date?

please select

Update can be delivered to

Which type of EBM update will be provided?

please select

Additional comments:

The national update has to be provided by 30.6.2017. Can you meet this deadline?

please select

EuroRegionalMap

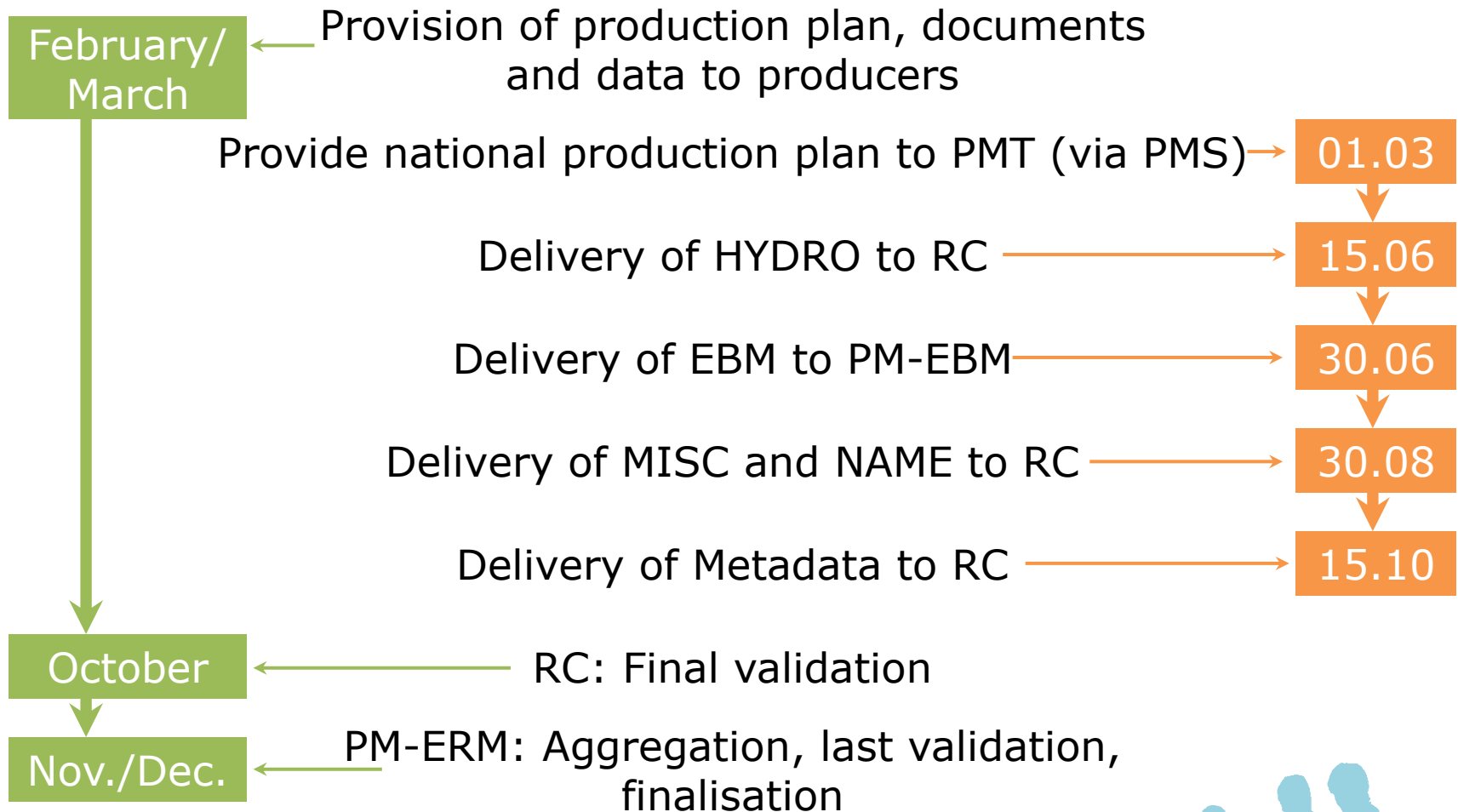
Boundary Theme of ERM (ERM-BND) will be derived automatically from EBM. Are there any national issues or constraints concerning this?

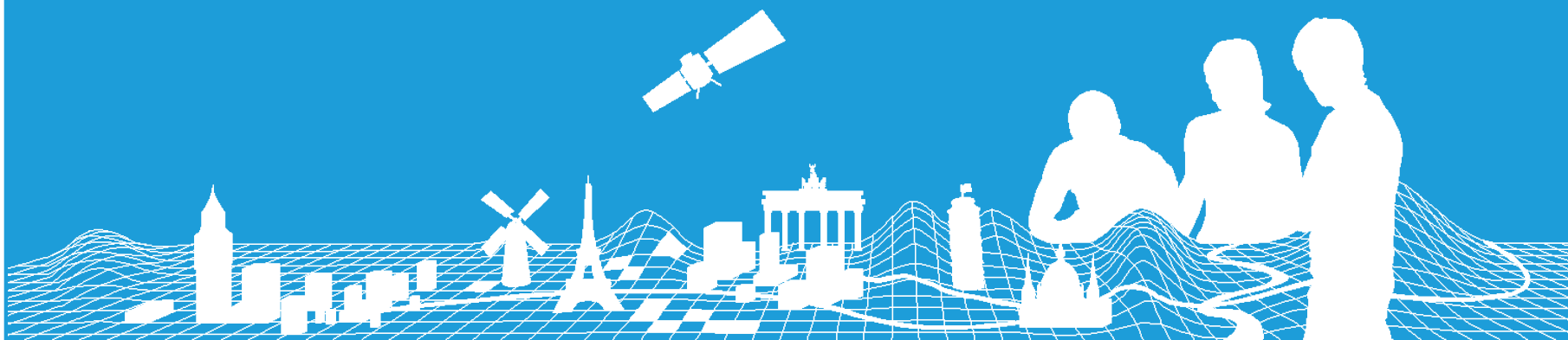
please select

Data producers are asked for a real update of theme Hydrography (HYDRO). Can you provide a full update?

please select

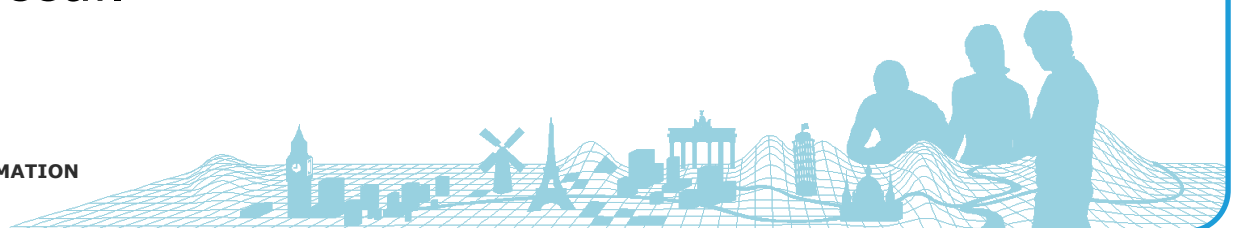
Timetable for Production of EBM and ERM 2017



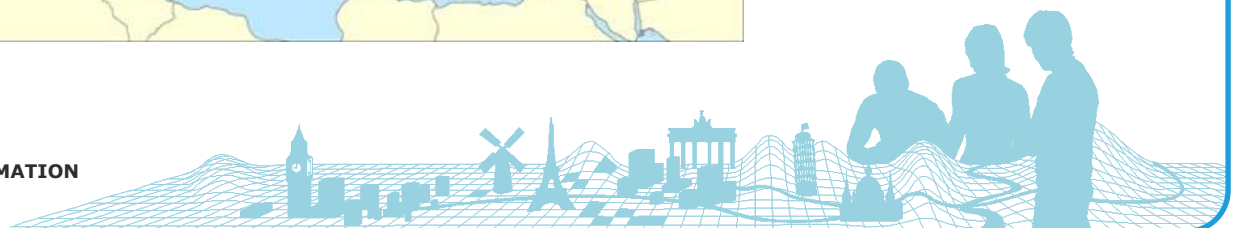


EBM Production 2017

- The production of the next update will be carried out in the usual workflow.
- The reference date of EBM v12 is 1.1.2017.
- The data model and all documents are kept stable. There are no new requirements.
- NMCAs have to update the following content of the EBM database:
 - Feature class **EBM_A** – basic EBM geometry
 - Table **EBM_NAM** – basic EBM attribution
 - Feature class **ResidenceOfAuthority**
 - Table **EBM_NUTS**
 - Table **EBM_ISN**
- NMCAs shall deliver only those feature classes or tables, where changes occur.



ERM Production 2017 – New groups



ERM Production 2017 – New groups

- Group A: Ben Bruns (Kadaster NL)
→ ben.bruns@kadaster.nl
- Group B: Clément Godin (IGN France)
→ clement.godin@ign.fr
- Group C: Dovilė Rusonytė (AGI)
→ d.rusonyte@agi.lt
- Group D: Andreas Pammer (BEV)
→ andreas.pammer@bev.gv.at
- Group E: Constantin Nagorneac (INGEOCAD)
→ cnagorneac@gmail.com



ERM Production 2017

- BND
 - Consider consistency with EBM update
- Real update
 - HYDRO: Maintain TEN attributes
 - MISC
 - NAME
- Features located on international boundary are stored in the ELF_IB_Regional database

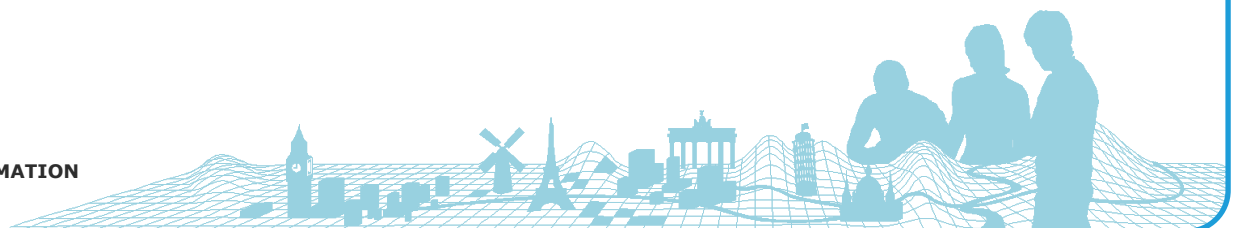
Update of other themes?

- Will not be validated by RC
- Will not be included in ERM v11



ERM Production 2017

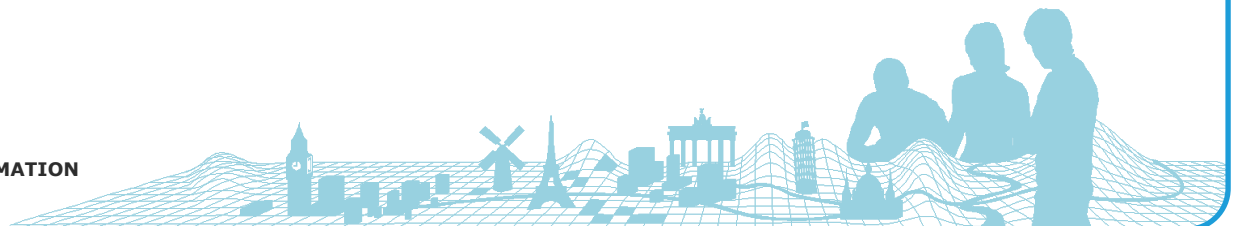
- Technical Documents
 - PMS
 - Changes in data specification and data model for ERM v11 (TEN, TENTEC-ID)
 - Revised Edge Matching Rules
 - From now on numbering of documents correspond to ERM release (e.g. ERM v11 Technical Guide for ERM v11)



ELF International Boundaries

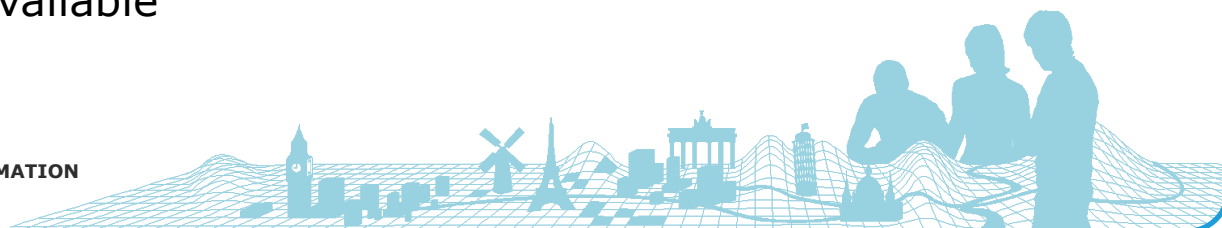
- NMCAAs are not allowed to make any changes on these boundaries on their own
- In case of issues → contact ebm@bkg.bund.de
- Open: integration of new country datasets from Albania and Bosnia and Herzegovina
- Please keep in mind:

We don't aim to find the legally defined international boundaries. We do need pragmatic solution how to represent the boundaries in medium scale for the products EBM and ERM.



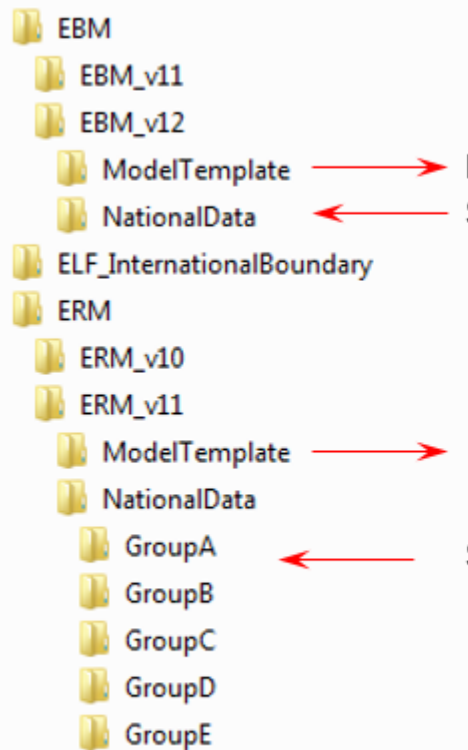
ELF International Boundaries

- ELF_IB_Regional_v5.gdb (on FTP server):
 - InternationalBoundary:
 - Have to be used for EBM/ERM
 - MaritimeBoundary:
 - 'territorial sea' or 'exclusive economic zone' (used for ERM SeaA)
 - Coastline_SeaLimit_EBM / Coastline_SeaLimit_ERM:
 - Both versions are mostly very similar – but not checked in detail
 - ConnectingFeaturePoint
 - Store points on the international boundaries, where the edge matching of topographic data has been already agreed for ERM
 - Match your ERM updates to these points (or use them to discuss edge matching with neighbouring countries)
 - New points available



Data exchange

- BKG-FTP server: <ftp://ftp.bkg.bund.de>



Data Producer get access
information separately

EBM Geodatabase model

Store your national data according to your EG-Code here

ERM Geodatabase model

Store your national data according to your EG-Code in your group here



Documents

- PMS

EBM, ERM and EGM Production Management System

home poll **documents** meetings actionlist PMT overview settings contact

Hello, bkg [Logout](#)

EG Product Documents. download all important documents

Production Plan

- [Production Plan 2017](#)

EBM

- [Technical Guide](#)
- [Specification](#)

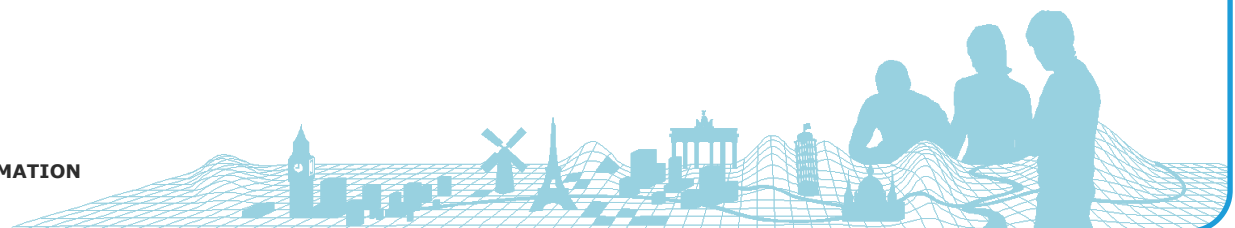
ERM

- [Technical Guide](#)

EGM



CONNECTING YOU TO THE
**AUTHORITATIVE GEO-INFORMATION
FRAMEWORK** FOR EUROPE



Thank you for your attention



Contact:

Jürgen Spradau and Regine Elling
Federal Agency for Cartography and Geodesy
Richard-Strauss-Allee 11
60598 Frankfurt am Main / Germany

Email: ebm@bkg.bund.de

