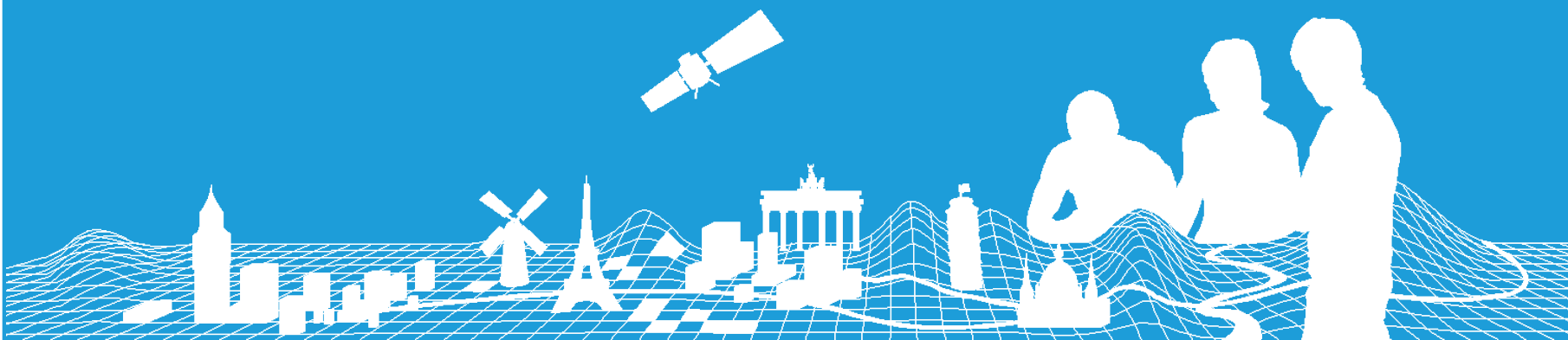


# Edge Matching

Regine Elling, Marcus Brühl / BKG  
EG Producer Meeting, Amsterdam  
14<sup>th</sup>/15<sup>th</sup> September 2016



# Content

- (1) Status of international boundaries (ELF IB)
- (2) Usage of connecting features
- (3) Features located on the international boundary



# (1) Status of international boundaries (ELF IB)

Unchanged (see webinar 1.3.2016):

- Valid version: **ELF\_IB\_Regional\_v4.gdb**  
→ To be used for EBM/ERM
- NMCAAs are not allowed to make any changes on these boundaries on their own.
- In case of issues (international boundaries and/or connecting features)  
→ Contact [ebm@bkg.bund.de](mailto:ebm@bkg.bund.de) + Marcus Brühl



# (1) Status of international boundaries (ELF IB)

## New:

- Connecting features points are not necessarily located on a vertex of the international boundary. Connecting features points just have to be snapped properly to the international boundary.
- If you change connecting features  
→ Don't create new vertices on the boundary!



# **(1) Status of international boundaries (ELF IB)**

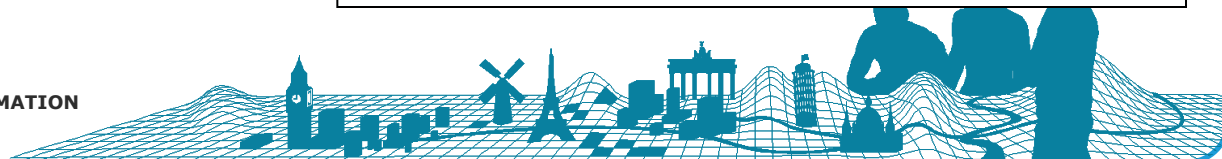
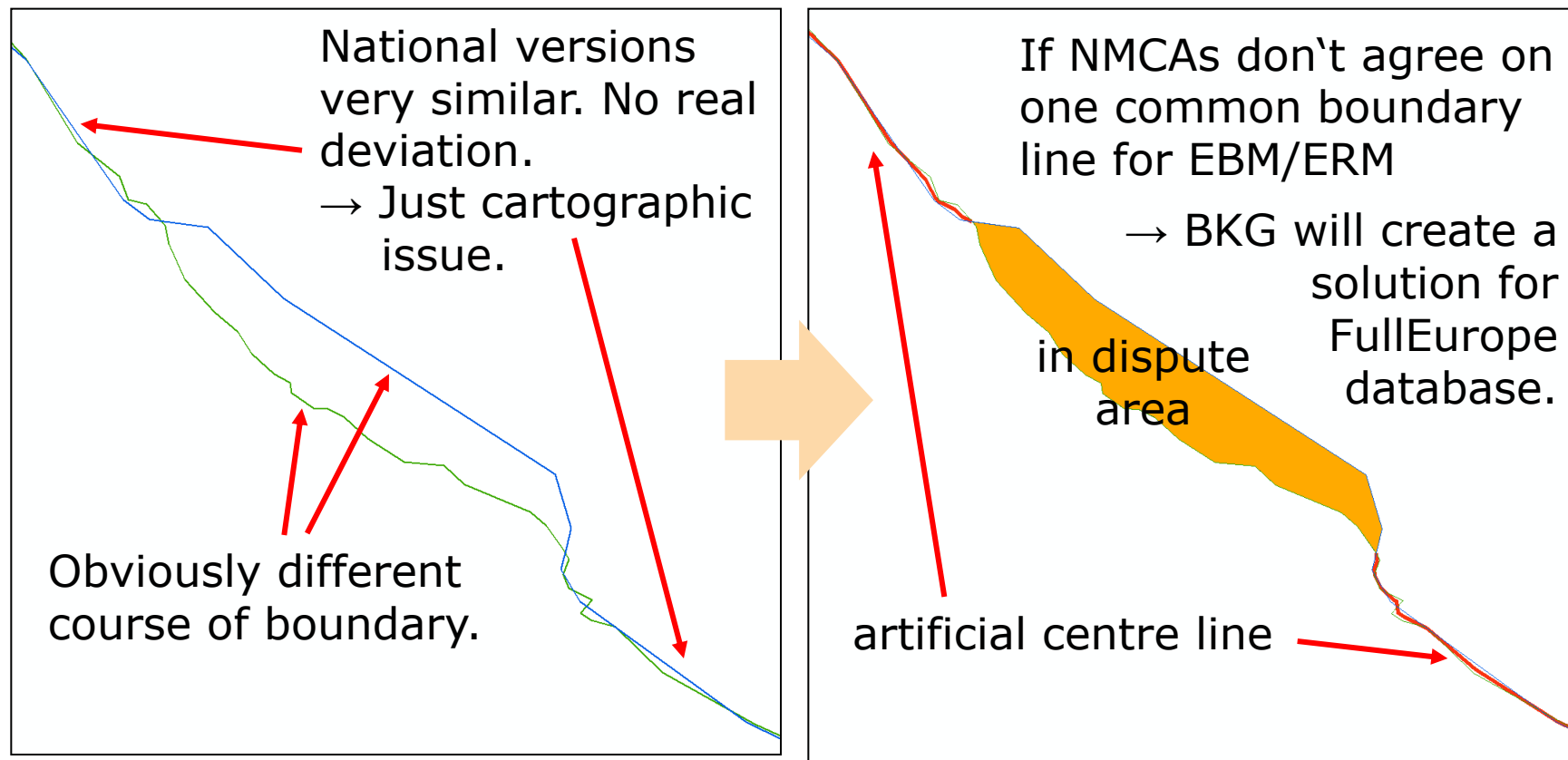
## Unsolved:

- Albania as well as Bosnia and Herzegovina have been integrated in EBM v10 as country datasets  
→ International boundaries not clarified yet with neighboring countries.
- Jörgen Spradau will discuss with concerned NMCAAs (AL, BA, RS, KS, MK, GR) during EG Producer meeting.



# (1) Status of international boundaries (ELF IB)

## Example Bosnia and Herzegovina – Croatia:



# (1) Status of international boundaries (ELF IB)

Keep in mind:

- We don't aim to find the legally defined international boundaries. We do need pragmatic solution how to represent the boundaries in medium scale for the products EBM and ERM.



## (2) Usage of connecting features

- Concept and workflow well described in ERM Edge Matching Rules, section 1.2.1 pp
- Connecting features:
  - ELF IB Regional → *ConnectingFeaturePoint*
  - Represent locations on the international boundaries where edge matched geographic entities from neighbouring countries connect.
  - Serve as anchor for repeatable edge matching  
→ Simplify the edge matching process





## (2) Usage of connecting features

Agreed international boundary  
Austria / Germany

Field	Value
OBJECTID	155
Shape	Polyline
inspireId	_EG.ELF.IB.Regional:AT#DE.2
beginLifespanVersion	11.12.2012
endLifespanVersion	<null>
country	AT#DE
legalStatus	agreed
technicalStatus	edgeMatched
lastMeasurement	<null>
accuracy	<null>
movingBoundary	<null>
Shape_Length	7,00541

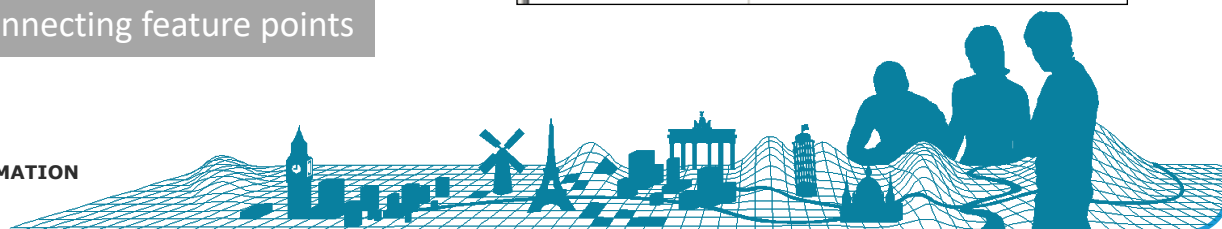
DE

AT

Connecting Feature Point for matching  
of watercourse across boundary

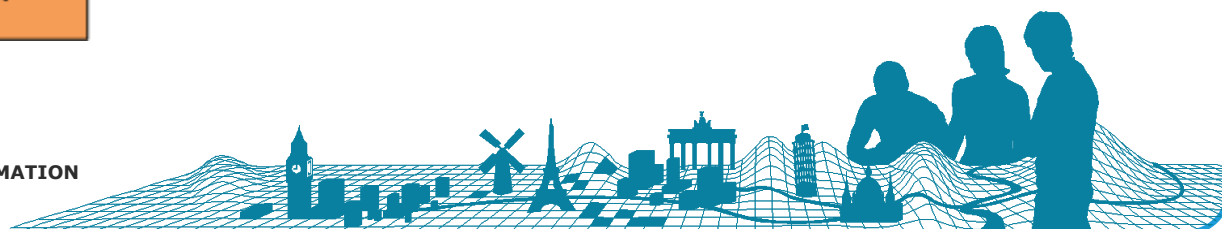
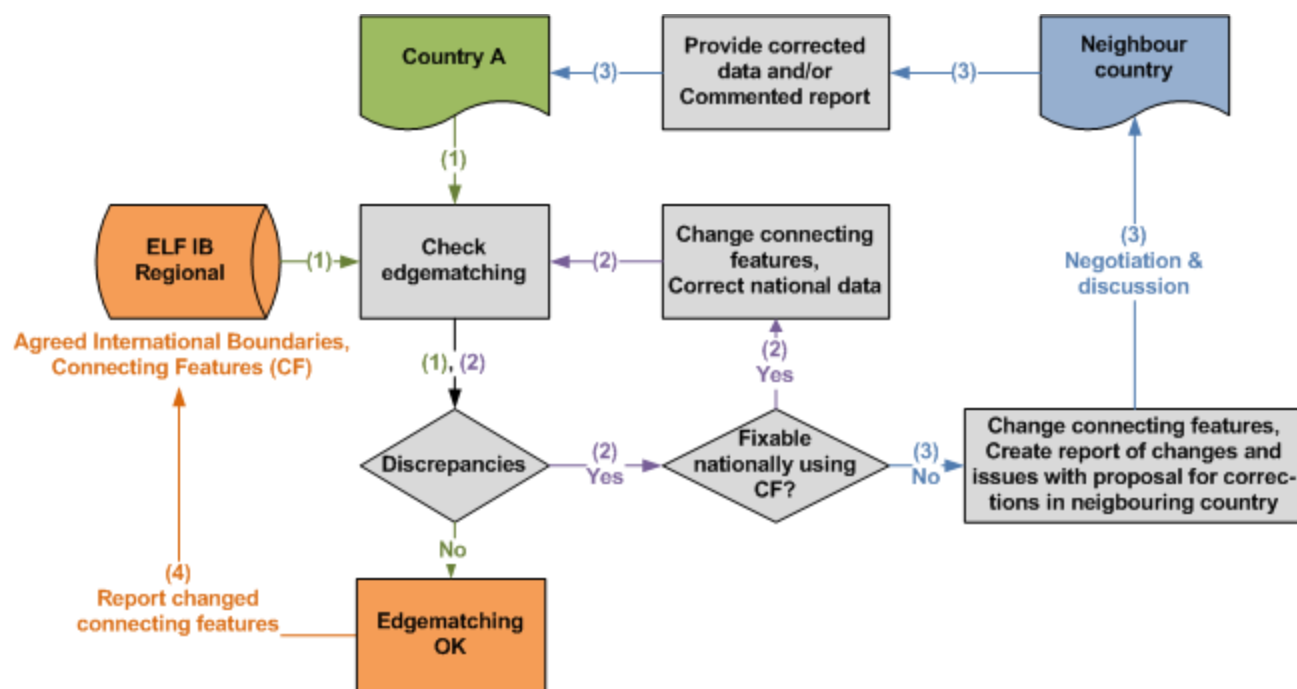
Watercourse located on the boundary using a  
segment of the international boundary  
represented by two connecting feature points

Field	Value
OBJECTID	370677
Shape	Point
inspireId	_EG.ELF.IB.Regional:AT#DE.2.426
beginLifespanVersion	11.12.2012
endLifespanVersion	<null>
country	AT#DE
featureType	AdministrativeBoundary#WatcrsL
status	approved



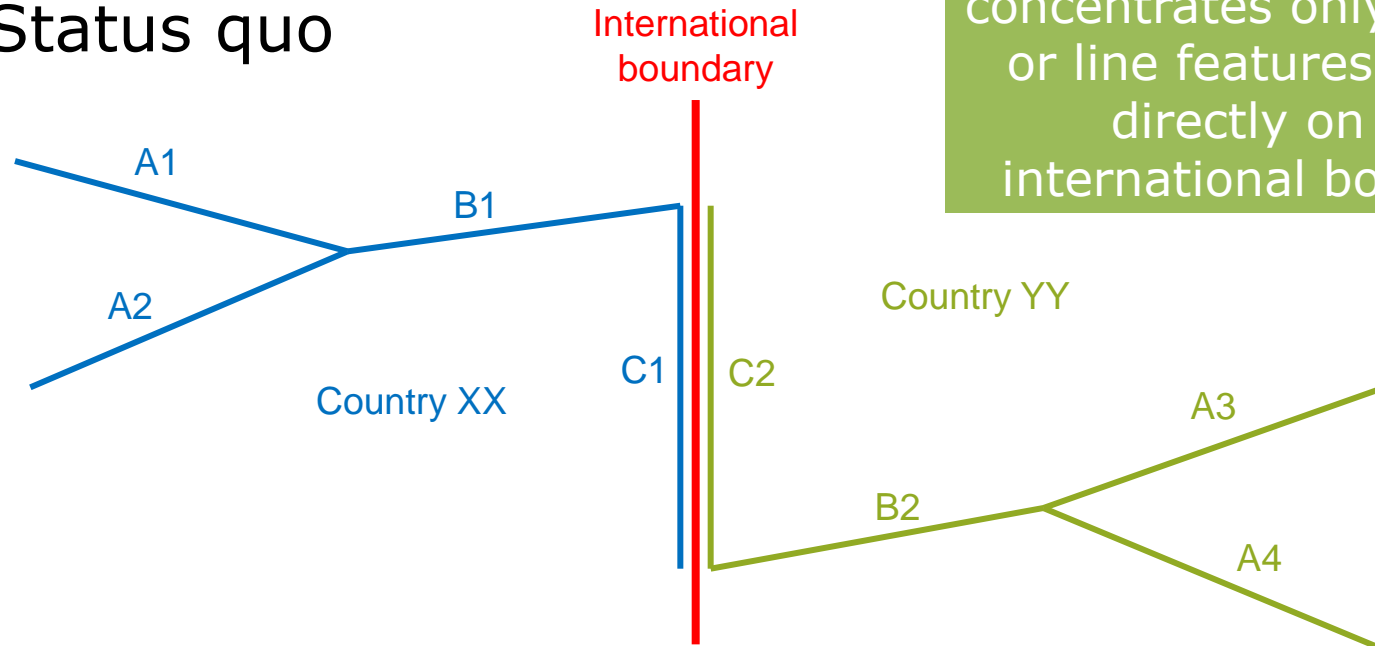
## (2) Usage of connecting features

- Workflow of ERM edge matching procedure using ELF IB Regional and connecting features:



### (3) Features located on the international boundary

- Status quo



At the moment: ERM concentrates only on point or line features located directly on the international boundary!

- Features completely inside country (A1, A2, A3 and A4)
- Features linked to international boundary (B1 and B2)
- Features located on international boundary (C1 and C2)

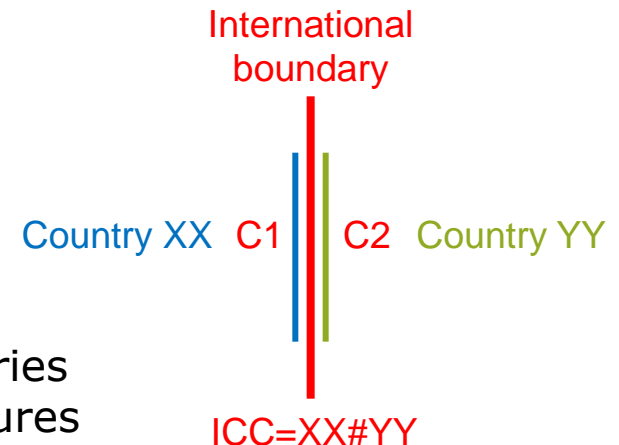


### (3) Features located on the international boundary

- **New workflow starting with ERM v11**  
→ Described in ERM Edge Matching Rules, section 1.2.4

- **Preconditions**

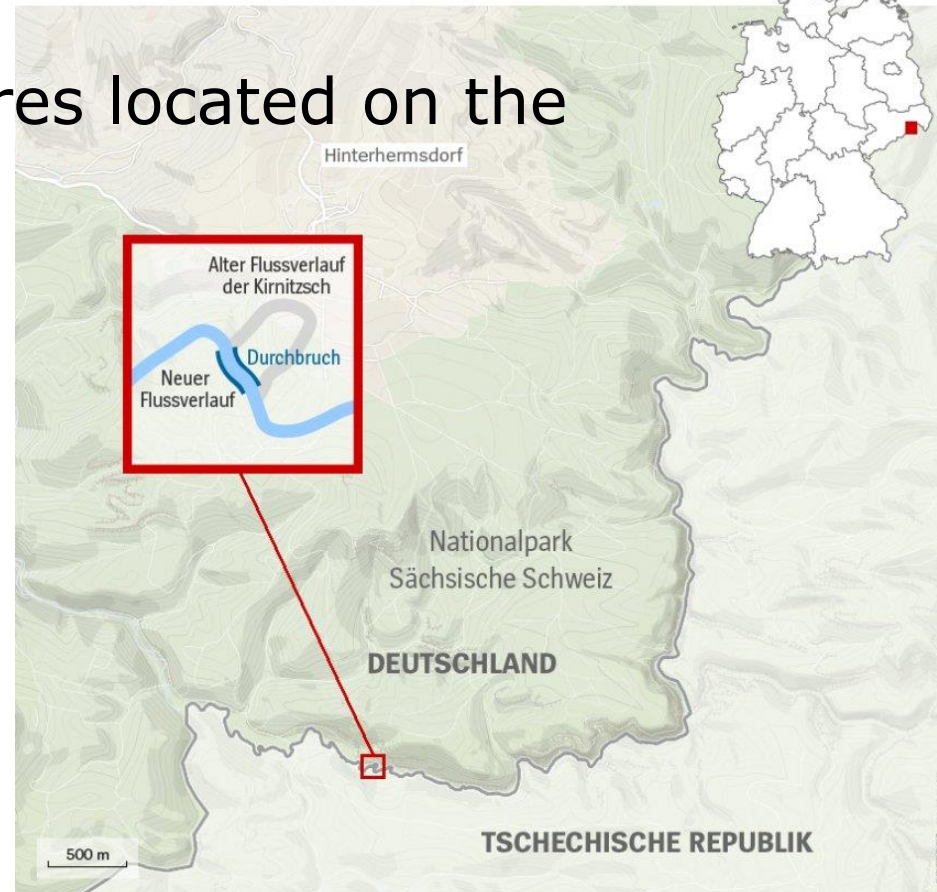
- Features have to be properly edge matched
  - Agreement between neighbouring countries on a common representation of the features
  - Complete attribution
- Features must have two ICC-Codes separated by “#”



### (3) Features located on the international boundary

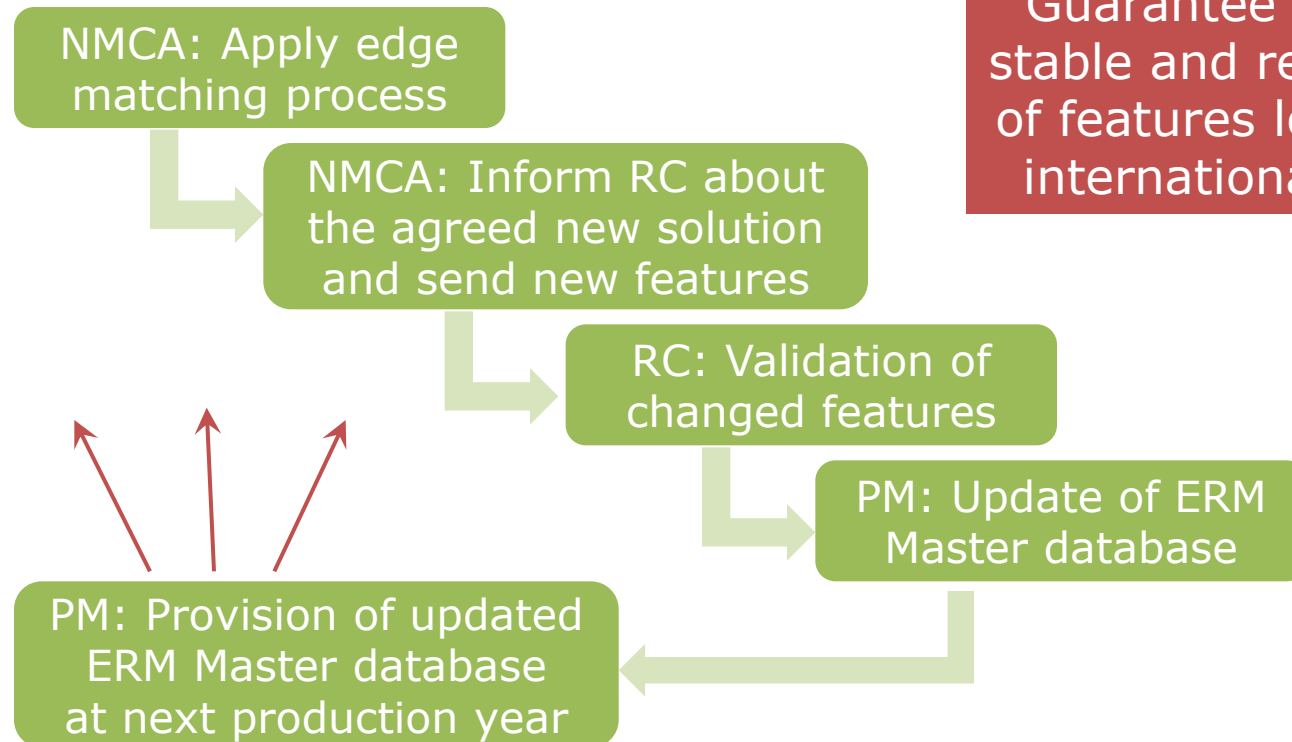
- No real change of features located on the international boundary:
  - NMCAs can exclude such features from their update delivery
  - If national update includes such features → will be ignored by RC and not validated

Verlauf der Kirnitzsch in Sachsen



### (3) Features located on the international boundary

- Real change of features located on the international boundary:



# Thank you for your attention



Contact:

Marcus Brühl and Regine Elling

Federal Agency for Cartography and Geodesy

Richard-Strauss-Allee 11

60598 Frankfurt am Main / Germany

Email: [ebm@bkg.bund.de](mailto:ebm@bkg.bund.de)

