



## **Extraordinary General Assembly 2016**

The Leuven Institute for Ireland in Europe  
10-11<sup>th</sup> May 2016

# **This Extraordinary General Assembly aims to:**

- Provide a presentation on the development of the European Location Framework
- Present the draft vision for the future of European location services;
- Give a briefing on the Knowledge Exchange Networks,
- Present Product and Service developments;
- Scrutinise and approve the financial accounts of the Association before they are registered with the Belgian Court of Commerce;
- Approve new members of the association;
- Brief members on the main business issues to be presented at the 2016 General Assembly in Budapest;
- Give a forum to discuss the needs of members.

# Agenda – Day one

<b>Tues May 10<sup>th</sup></b>	<b>EuroGeographics - Collaborating, Cooperating and Contributing</b>	<b>Chair/Speaker</b>
<b>12.00 – 12.30</b>	<b>Lunch</b>	
<b>12.30</b>	Introduction and Welcome	Ingrid Vanden Berghe, President of EuroGeographics
<b>12.45</b>	EuroGeographics in 2016	Mick Cory, Secretary General and Executive Director
<b>13.15</b>	The Anatomy of PSMA Australia – the structure and components for delivering pan-continental geospatial datasets in Australia.	Dan Paull, Chief Executive, PSMA Australia
<b>13.45</b>	The Delivery of the European Location Framework Project	Antti Jakobsson, ELF Technical Co-ordinator
<b>14.15</b>	Draft European Location Services: Vision & Strategy	Wernher Hoffmann, Chair of EuroGeographics ELF Programme Board Mick Cory, Secretary General and Executive Director
<b>14.45 – 15.05</b>	<b>Coffee break and photo</b>	
<b>15.05</b>	The future of European Location Services (Cont.) <ul style="list-style-type: none"> <li>• Data supply and quality control</li> <li>• The technical Infrastructure</li> <li>• Product development and business issues</li> </ul>	Martin Salzmann, Kadaster, The Netherlands Olaf Petter Aarrestad, Statens kartverk, Norway David Henderson, Ordnance Survey, Great Britain
<b>15.45</b>	Round tables – Guide questions for discussion: <ul style="list-style-type: none"> <li>• Do you support the draft vision, strategy and organisational approach for the future of European location services?</li> <li>• Are there additional strategic actions required to deliver on this draft strategy?</li> <li>• What support can you give to help make this happen?</li> </ul>	
<b>17.00</b>	<b>Close of ExGA</b>	
<b>17.00 – 18.00</b>	Optional side meeting on what 'Open' is and how to influence the economic benefit from it – led by Dan Paull, Chief Executive, PSMA Australia	
<b>19.00 General Assembly Dinner at the Irish Institute Leuven</b>		<b>Dress code smart casual</b>

# Agenda – Day two

Wed May 11th	EuroGeographics - Collaborating, Cooperating and Contributing	Chair/Speaker
08.30	<b>The Value of Knowledge Exchange Networks:</b> A showcase on what each KEN is about, the value the KENs provide to member organisations, and why is it important to actively participate in them. <ol style="list-style-type: none"> <li>Quality KEN (QKEN)</li> <li>Positioning KEN (PosKEN)</li> <li>Policy KEN (PolKEN)</li> <li>INSPIRE KEN</li> <li>Copernicus KEN (CoKEN)</li> <li>Business Interoperability KEN (BIKEN)</li> <li>State Boundaries of Europe KEN (SBEKEN)</li> <li>Cadastral and Land Registry KEN (CLRKEN)</li> </ol>	<b>Chair:</b> Carol Agius, EuroGeographics UN-GGIM: Europe Administrator and KEN Coordinator  Jonathan Holmes Danko Markovinovic Dominik Kopczewski Dominique Laurent Saulius Urbanas Ashley Wright Saulius Urbanas Martin Salzman
10.15	<b>Coffee</b>	
10.40	EuroGeographics product development plans: <ul style="list-style-type: none"> <li>EuroBoundaryMap</li> <li>EuroRegionalMap</li> <li>EuroDEM30 Pilot</li> </ul>	<b>Chair:</b> Angela Baker EuroGeographics Sales, Marketing and Channel Manager <ul style="list-style-type: none"> <li>Jörgen Spradau, BKG</li> <li>Regine Elling, BKG</li> <li>Saulius Urbanas, EuroGeographics</li> </ul>
<b>Formal Business of EuroGeographics AISBL</b>		
11.35	Treasurer's Report including EuroGeographics AISBL 2015 Financial Report and Accounts (VOTE)	<b>Chair:</b> Ingrid Vanden Berghe, President of EuroGeographics Jean-Philippe Grelot, Treasurer of EuroGeographics
12.00	Membership Application (VOTE)	Patricia Sokacova, Membership and Communications Manager
12.15	Briefing on topics for 2016 GA – Budapest	Mick Cory, Secretary General and Executive Director
12.45	Summary and Conclusions	Ingrid Vanden Berghe, President of EuroGeographics.
13.00	<b>Close of the meeting followed by Lunch till 13.30pm</b>	

## House keeping

- Fire exits
- Toilets
- Coffee breaks
- Conference photograph 2.45pm Courtyard
- Conference dinner 7.00pm Institute Restaurant
- Wifi – TP Link

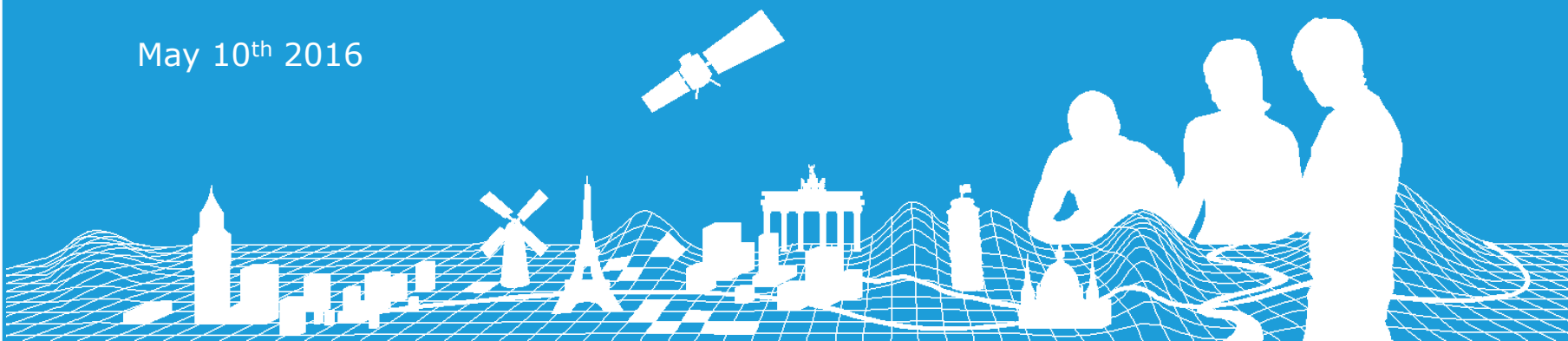
## Additional meetings

- Today after the end of the ExGA
  - Side meeting on 'Open' facilitated by Dan Paull 5.00-6.00pm
- Tomorrow after the end of the ExGA
  - Management Board 2.00-3.30pm, Board Room
  - KEN Chairs and EuroSDR joint meeting 2.00-5.30pm, Green Room
- Thursday 12<sup>th</sup> May
  - PolKEN meeting 9.00am-3.00pm, Conference Room 2

# EuroGeographics in 2016

Mick Cory,  
Executive Director and Secretary General

May 10<sup>th</sup> 2016



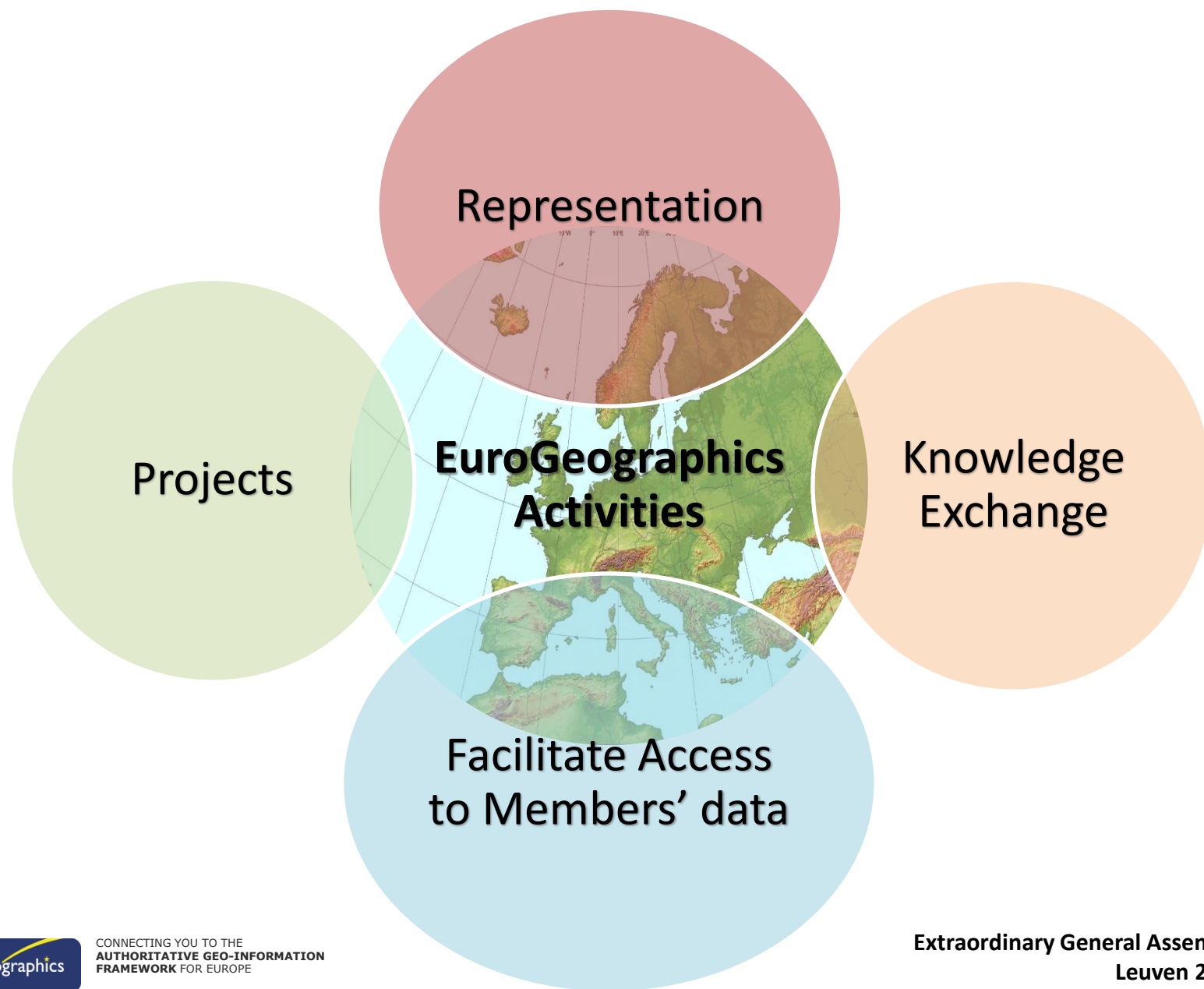


# EuroGeographics Membership

- 46 European countries
- 60 members
- Responsible for geodetic, cadastral, land registry and mapping activities

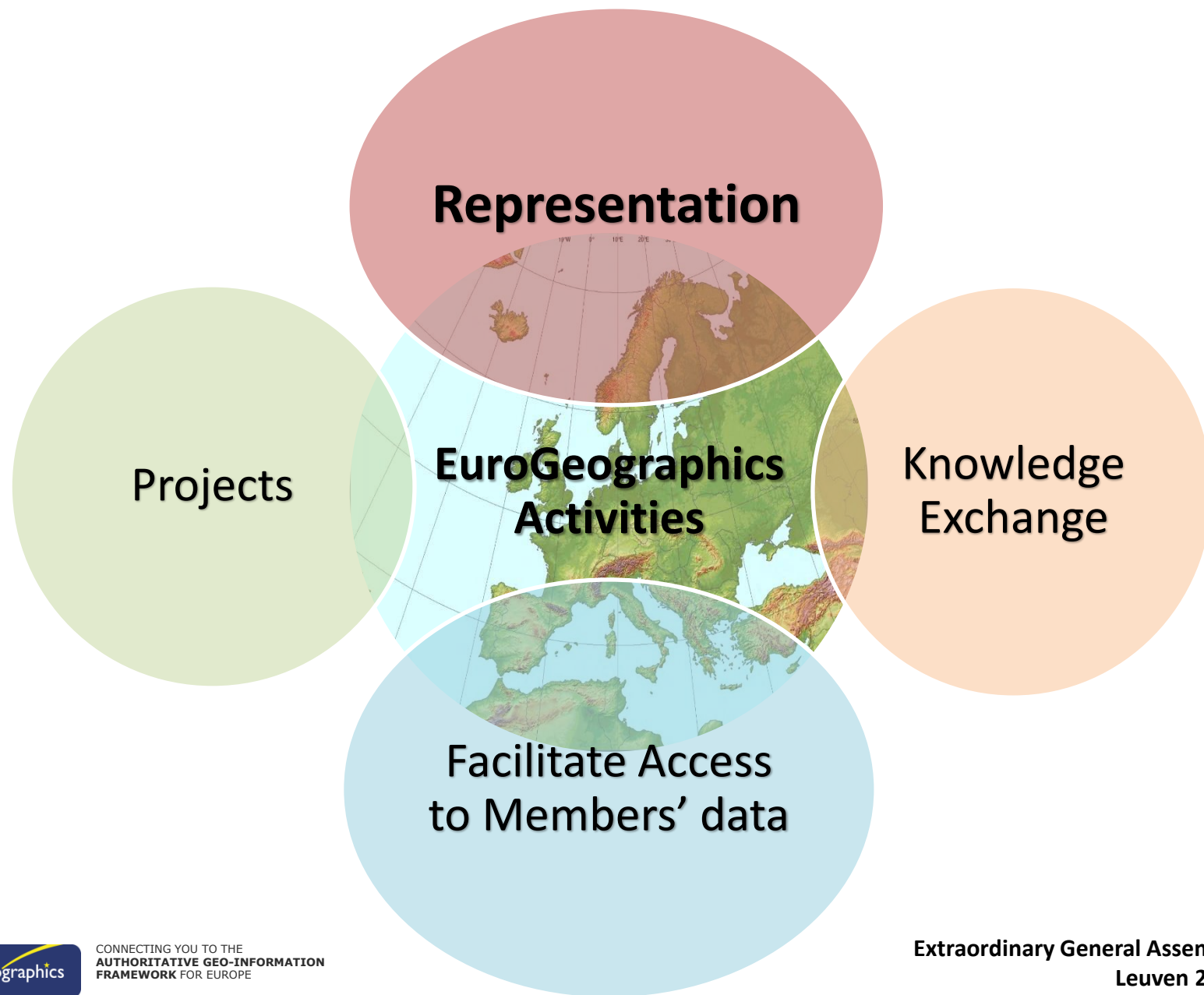






# EuroGeographics – 2016 Strategic Goals

- Meeting our commitments to the ELF project;
- Developing a clear vision and strategy for the future;
- Maximising the use of our member's products, services and expertise;
- Working with UN-GGIM: Europe;
- Knowledge Exchange Networks help members deliver their national responsibilities through sharing of 'best practice';
- Develop the Association in order to unlock its full potential.



# Providing the voice of our members

## Representation

Current Policy Topics

European Affairs and  
Representation Strategy  
(EARS)

Policy Briefing Documents

UN-GGIM

\*\*\*Weekly Representation  
News Update\*\*\*



## Communications

Articles in professional  
journals

Members' eNewsletter

Presentations

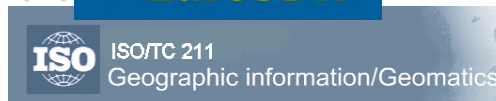
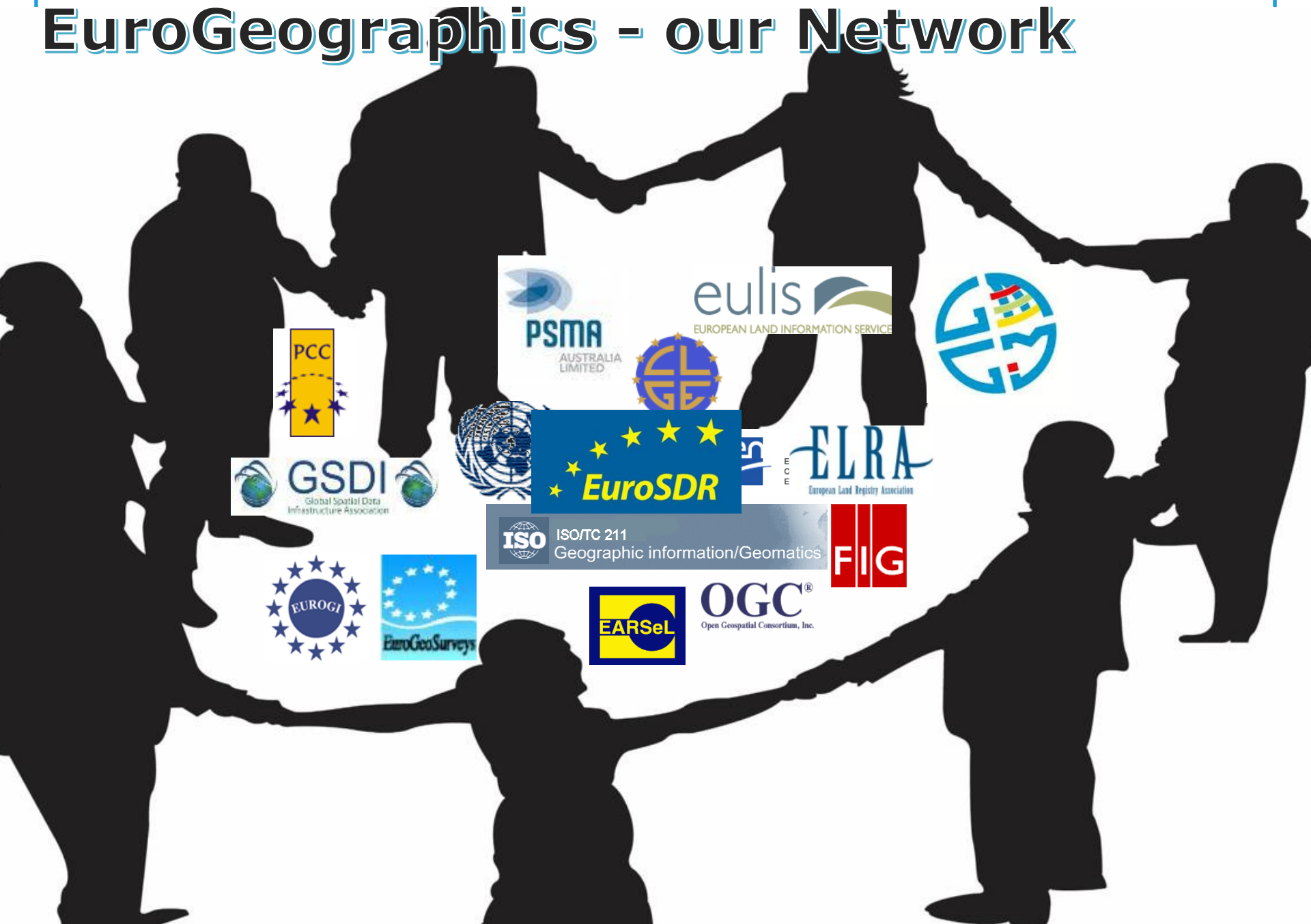
Press Releases

Subscribe to our RSS feed

Website Helpdesk

YouTube Video Channel

# EuroGeographics - our Network



# Constructive Participation

- With the Commission:  
Maps for Europe flagship exhibition & events in Berlaymont - visibility for Members' capabilities.
- With PolKEN:  
Database Directive legal challenge, subsequent briefings & mobilising Members - positive impact.
- With stakeholders:  
To facilitate the legitimate presence of geospatial information in relevant United Nations and EU programmes.
- For the future:  
Rebalancing Representation towards wider Membership benefits post ELF Project



# Communication



## KEY CONTRIBUTIONS 2015

- Providing a platform for sharing best practice and expertise
- Facilitating an open forum for discussion and collaboration to find shared solutions to common challenges
- Working closely with organisations with complementary experience and expertise

## GENERAL ASSEMBLIES

EuroGeographics holds two General Assemblies each year. The Extraordinary General Assembly, for permanent correspondents, is held in the spring. It is followed later in the year by the main General Assembly which is attended by the heads of the European National Mapping, Cadastre and Land Registry Authorities.

In May, members were represented by 42 delegates from 22 countries at the Extraordinary General Assembly held in Leuven, Belgium. Kamroni, Head of Policy and Frameworks, DG ECHO (Civil Protection & Humanitarian Aid), European Commission gave an overview of EU policy for disaster response and risk management. Updates were also provided by the IGN Chairs and production managers. In addition, the application for full membership from the Ministry of Environment and Urban Planning, General Directorate of Land Registry and Cadastre, Turkey was accepted.

The 2015 General Assembly was hosted by the Republic of Serbia in Belgrade and attracted record-breaking numbers of delegates. More than 150 leaders from 47 member organisations took part in the two-day event to review progress, focus on future plans, share expertise and discuss key issues. During the formal business of the Association, Igor Vasiliev from the Federal Service for State Registration, Cadastre and Cartography, Russia and Wlodek Hoffmann from the Federal Agency for Metrology and Surveying, Austria were elected to the Management Board.

The conference was officially opened by Zorana Mihailovic, Deputy Prime Minister, Serbia and Goran Vasil, Manager, City of Belgrade. Speakers included Boris Draskovic, Director General, Republic Geodetic Authority and Frank Lerman, International Relations Manager at RedICT, Belgium who gave the keynote presentation on delivering efficiencies and citizen services through e-Government programmes. Delegates also heard from representatives of the European Environment Agency as well as EuroGeographics members and Management Board.



**EuroGeographics**

@EuroGeographics

Association of Europe's national mapping, cadastre and land registry authorities

Brussels, Belgium

eurogeographics.org

Joined November 2009

TWEETS 1,335 FOLLOWING 414 FOLLOWERS 1,142 LIKES 61 LISTS 2

Edit profile

Tweets Tweets & replies Media



**EuroGeographics** @EuroGeographics · Apr 28

**UN-GGIM: Europe** @UNGGIMEurope

Building infrastructure for European geospatial statistics: @MarieHaldorson & Ekkehard Petri #Eurostat at #cesUNECE [unece.org/fileadmin/DAM/...](http://unece.org/fileadmin/DAM/...)



Your Tweet activity

Your Tweets earned 3,087 impressions over the last week



View your top Tweets



CONNECTING YOU TO THE  
AUTHORITATIVE GEO-INFORMATION  
FRAMEWORK FOR EUROPE

**Extraordinary General Assembly  
Leuven 2016**



## UN-GGIM: EUROPE

UNITED NATIONS INITIATIVE ON  
GLOBAL GEOSPATIAL  
INFORMATION MANAGEMENT



# UN-GGIM: Europe

## Advancing the Work

### At Regional Level:

- Working Group A – Core Data
- Working Group B – Data Integration
- GGRF: Europe

### At the Global Level:

- Global Working Group on Fundamental Data Themes
- Active in UN-GGIM Programme Review to ECOSOC, June
- Promoting importance of geospatial information for Agenda 2030





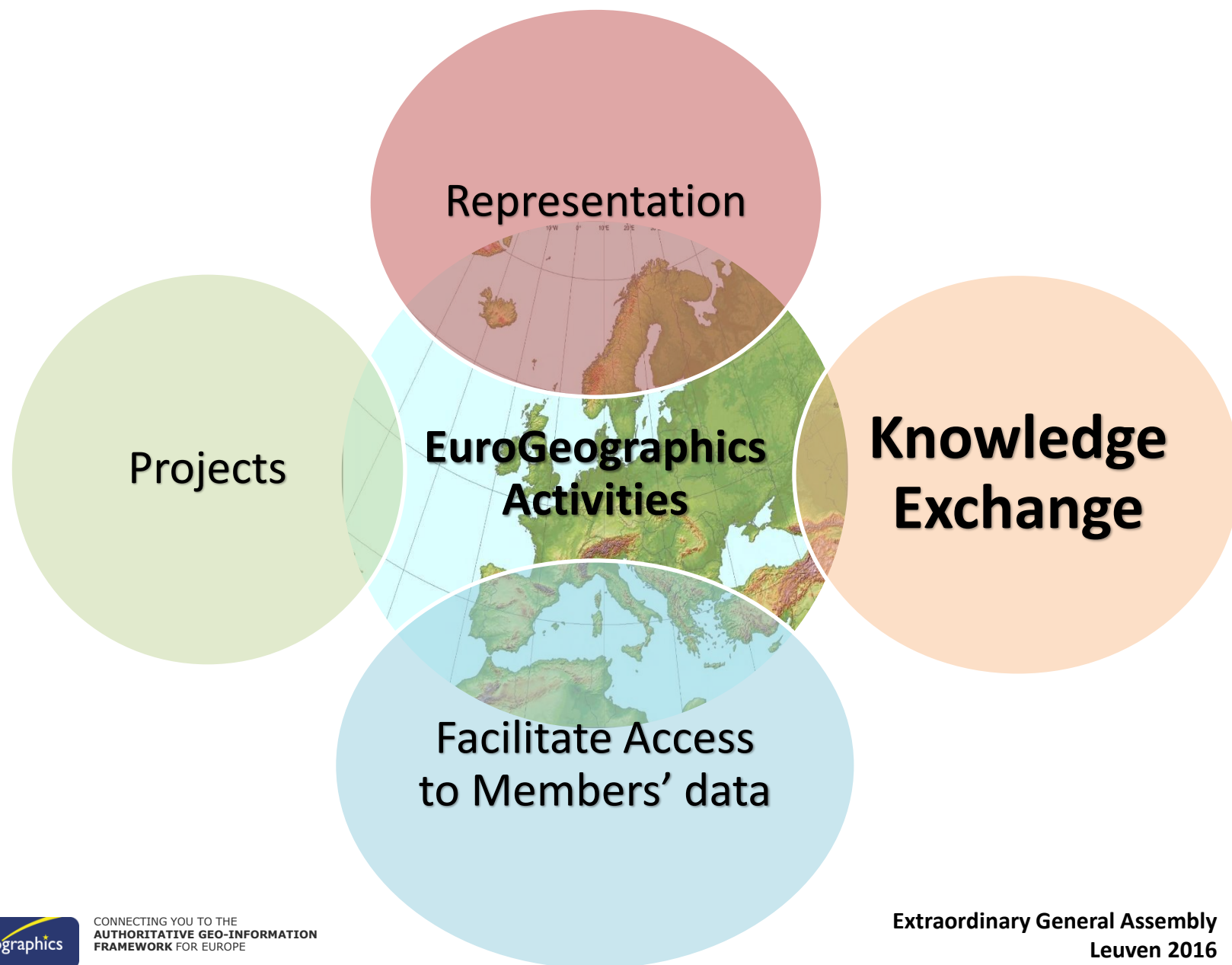
# 2030 Agenda for Sustainable Development



# 2030 UN Sustainable Goals

## The spatial dimension

- SDG 17 Target 18
  - By 2020, enhance capacity-building support to developing countries,
  - increase significantly the availability of high-quality, timely and reliable data
  - Including income, gender, age, race, ethnicity, migratory status, disability, **geographic location**
- Follow-up and review processes set certain principles
  - They will be rigorous and based on evidence;
  - informed by country-led evaluations and data;
  - Data will be high-quality, accessible, timely, reliable, and
  - includes income, sex, age, race, ethnicity, migration status, disability and **geographic location**.
  - Encourages the contribution to be made by a wide range of data, **including earth observation and geospatial information**.





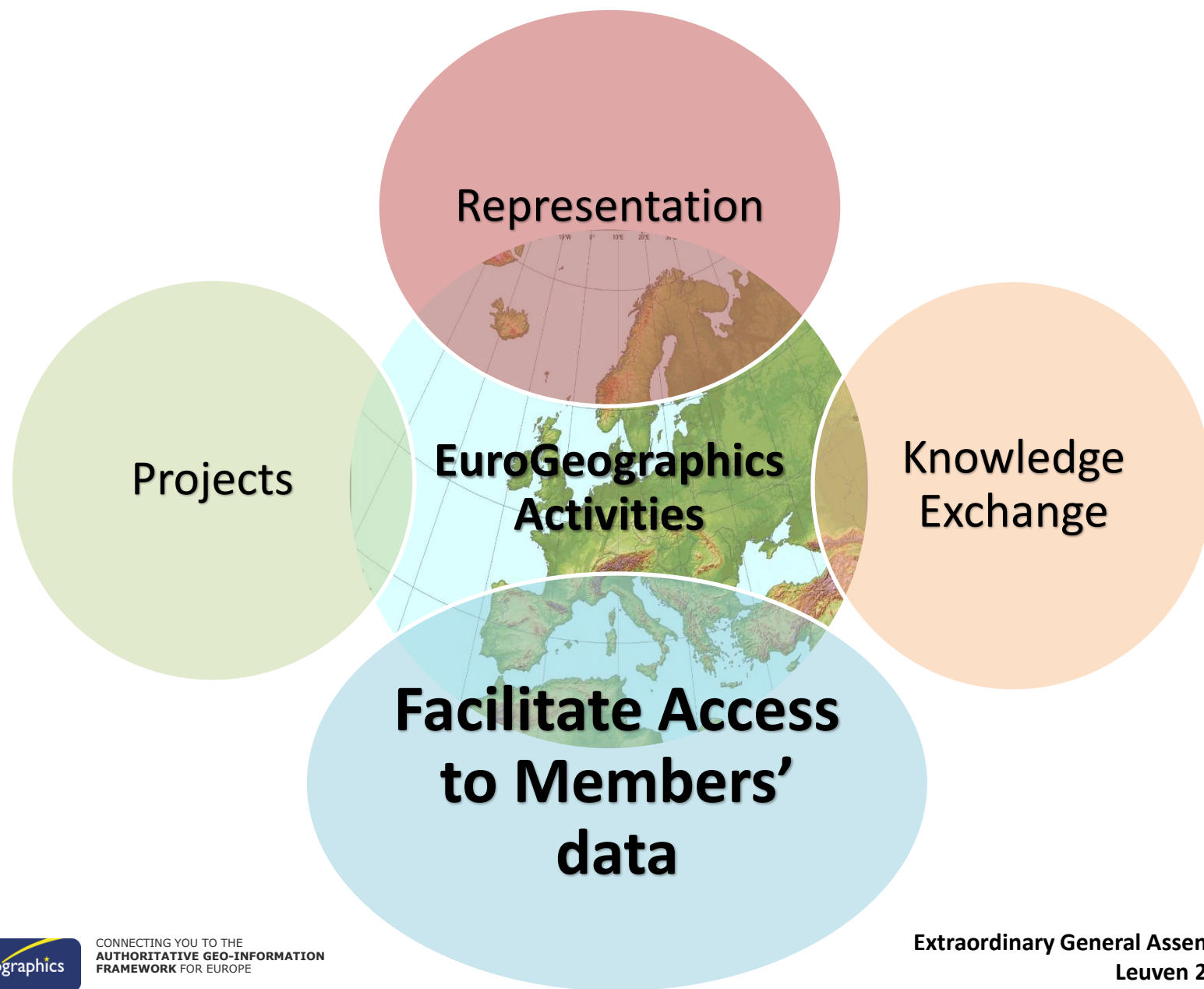
# Providing a platform for sharing best practice & expertise



# **Knowledge Exchange :**

## ***Sharing solutions to common challenges***

- Sharing knowledge and exchanging best practice
- Identifying issues that impact members
- Adding value to member organisations
- Advancing the Vision and Purpose of the Association
- Engaging with the wider geospatial community
- Consists of 8 active groups
- More than 350 participants
  - Business Interoperability
  - Cadastre and Land Registry
  - Emergency Mapping
  - INSPIRE
  - Policy
  - Quality
  - Positioning
  - Boundaries







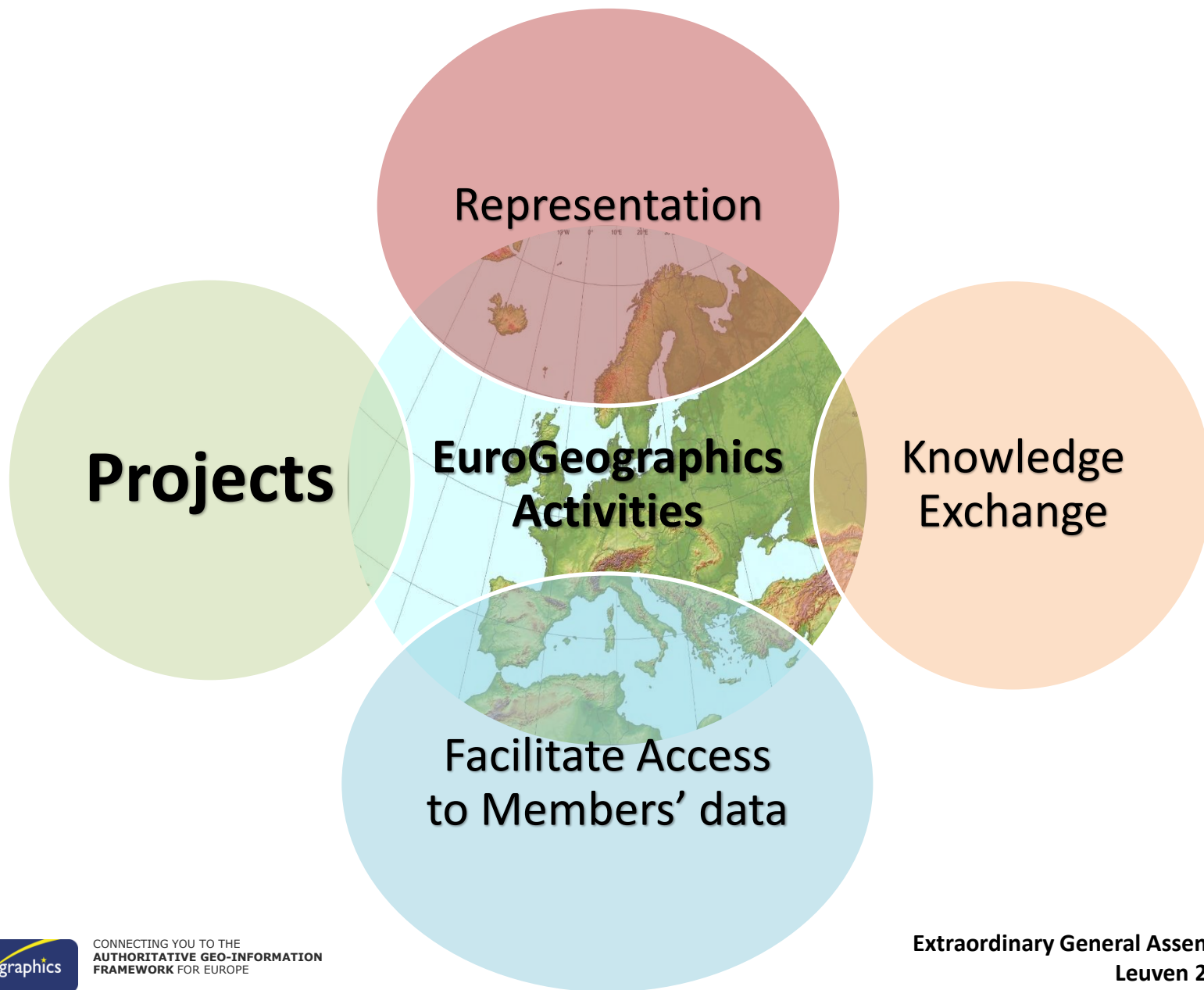
# Products & Sales

## Products

- EuroRegionalMap & EuroBoundaryMap updated & extended
- EuroGlobalMap Open Data updated:
  - >5000 downloads
  - >1600 educational users
- Negotiated a new Production contract with BKG
- A new more efficient production will be implemented 2016/2017

## Sales

- Customer retention and renewals on track
- On-going relationship with Eurostat
- Signed some significant new customers in 2015, and this trend continues in 2016





# Projects



**ELF** EUROPEAN  
LOCATION  
FRAMEWORK

# Contributing to the ELF Project

## Leadership and Coordination

- WP6 Leader - User & 3rd party data content
- Engaging NMCAs, including through KENs & product teams
- Coordinating messaging and communications plans

## Management

- Project Advisory Board (PAB) Co-Chair
- Project Management Group (PMG) Member

# Contributing to the ELF Project

## Production

- Service Manager assisting WP3 Leader
- Development of exonyms & variant names for GeoLocator
- Collection of boundary lines for connecting features across borders

## Communication & Engagement

- Dialogue with major stakeholders
- Webinars and events (regional, Awareness tours)
- ELF website, promotional materials, articles, newsletters, Twitter
- User Acceptance testing (UAT), Alpha & Beta testing

## Business aspects

- Market studies and product definitions
- User testing
- Customer Management and Security (ELF Security Manager)

# EuroGeographics in 2016

## Three priority areas:

- Finalize our strategic plans for European location services
- Manage the transition from ELF to EuroGeographics' ownership – establish Governance structures, identify funding
- Build strategic relationships and manage stakeholder expectations
  - Eurostat – as an important customer and partner
  - EEA – An partnership
  - JRC – ISA<sup>2</sup> developments, explore the potential

# **Build strategic relationships and manage stakeholder expectations - European Environment Agency**

- Positive meetings and discussions
  - Stefan Jensen presentation at Belgrade 2015 General Assembly
  - ELF project and CORDA
  - EGHO and Copernicus Project Manager for 'in-situ data' coordination
- EEA has delegated agreement with the EU for the cross-cutting coordination of access to in-situ data for Copernicus service;
- EEA is establishing framework contracts to identify Copernicus Services' in-situ data requirements, with detailed understanding of gaps;
- This will form basis of their actions related to in-situ spatial reference data;
- The biggest challenge is obtaining heterogeneous data sets from different providers;
- It is essential that there is close cooperation between EuroGeographics and EEA.

# EEA Next steps

- EEA wish to:
  - establish an overarching partnership with EuroGeographics
  - renew and update the 2011 agreement for access to NMCA data in times of crises
- Further meeting planned in June;
- Members are advised of our plans to update the emergency mapping agreement with EEA, and
- Are requested to support discussions on establishing and signing new one-to-one agreements with EEA in the coming months;



# **Build strategic relationships and manage stakeholder expectations - Joint Research Centre (JRC)**

- ISA Programme - coming to an end
  - EULF
  - ARENA
- Under EULF
  - Improving road safety information in navigation systems, pilot in Norway and Sweden, ELF data being evaluated;
  - Desk survey and pilots on availability of similar data from other countries -Potential for ELF to assist;
  - EU gazetteer feasibility study into demand, scope and supply options, ELF Geolocator discussions.
- New ISA<sup>2</sup> programme;
- €131 million over 5 years;
- Launched 3 March in Brussels – featured Geospatial;
- JRC proposal – European Location Interoperability Solutions for e-Government (ELISE);
- JRC view that ELF is an important contributor to ELISE;
- Important concepts in ELISE:
  - Common services with 'authentic' data supporting multiple applications;
  - Location data pilots in different policy areas.

## JRC – next steps

- ISA<sup>2</sup> budget has been approved;
- JRC now planning the ELISE work programme for the first year, based on the proposal agreed by the ISA2 Committee
  - To tidy up current ISA programme, and
  - To set new priorities going forward;
- JRC Unit has been reorganised with some 50% staff changes;
- Transition period until end of July;
- Meeting with EuroGeographics being arranged to:
  - Discuss future work with JRC and how ELF contributes in ELISE;
  - How to develop services that integrate ELF platform.

# Your Head Office Team

