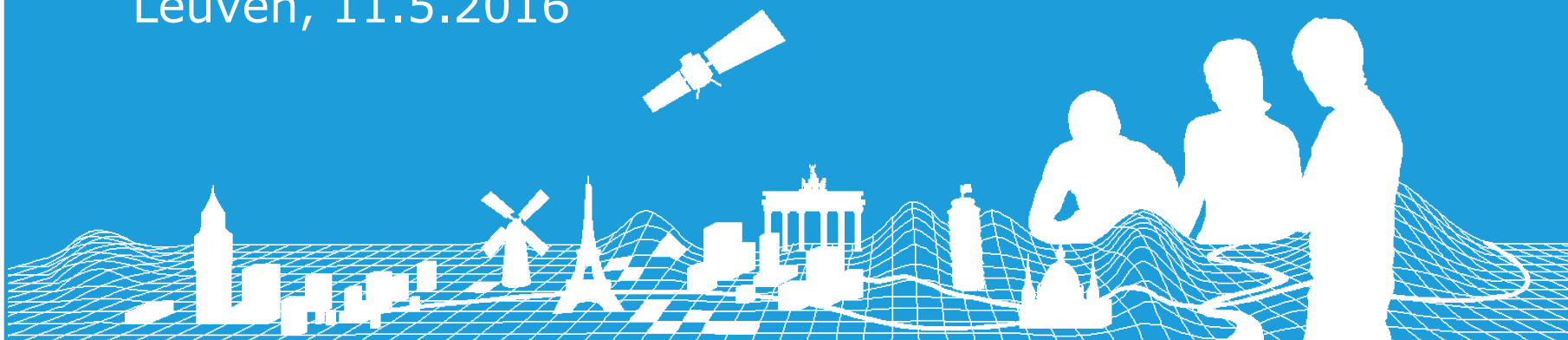


# EuroRegionalMap

Regine Elling

Extraordinary General Assembly 2016

Leuven, 11.5.2016



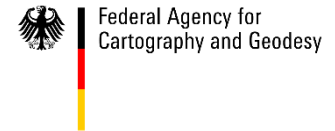
# Agenda

- New Production Management Team
- EuroRegionalMap overview
- ERM v9.0/v9.1
- Coverage
- User feedback inquiry
- Update ERM
- ERM outlook



# New Production Management Team

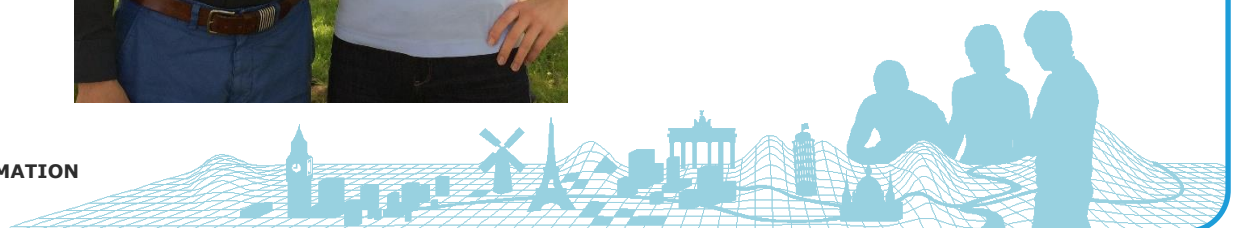
- Federal Agency for Cartography and Geodesy (BKG)  
now responsible for the  
production management of ERM



Alexander Reichelt  
(Technical Manager)

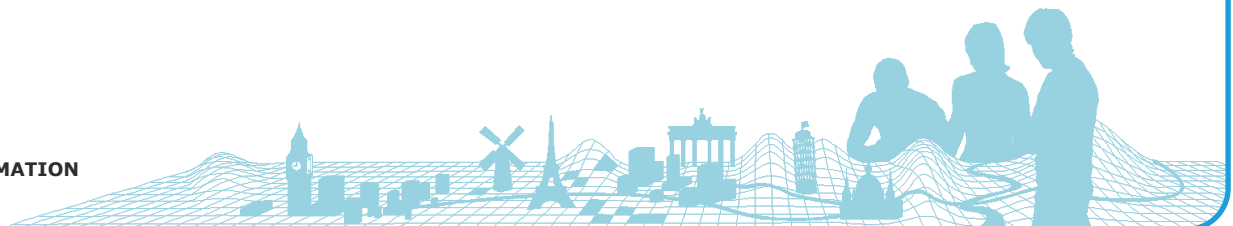
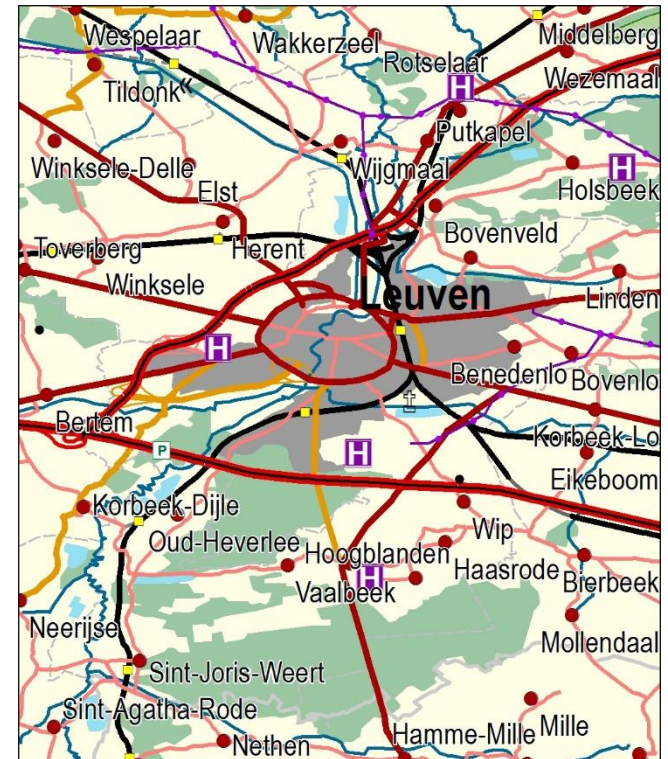


Regine Elling  
(Production Manager)



# EuroRegionalMap (ERM) overview

- Topographical dataset 1:250.000
- Themes
  - Boundaries (BND)
  - Hydrography (HYDRO)
  - Named Location (NAME)
  - Miscellaneous (MISC)
  - Settlement (POP)
  - Transport (TRANS)
  - Vegetation and Soils (VEG)
  - [Points of Interest (POI)]
- Yearly update

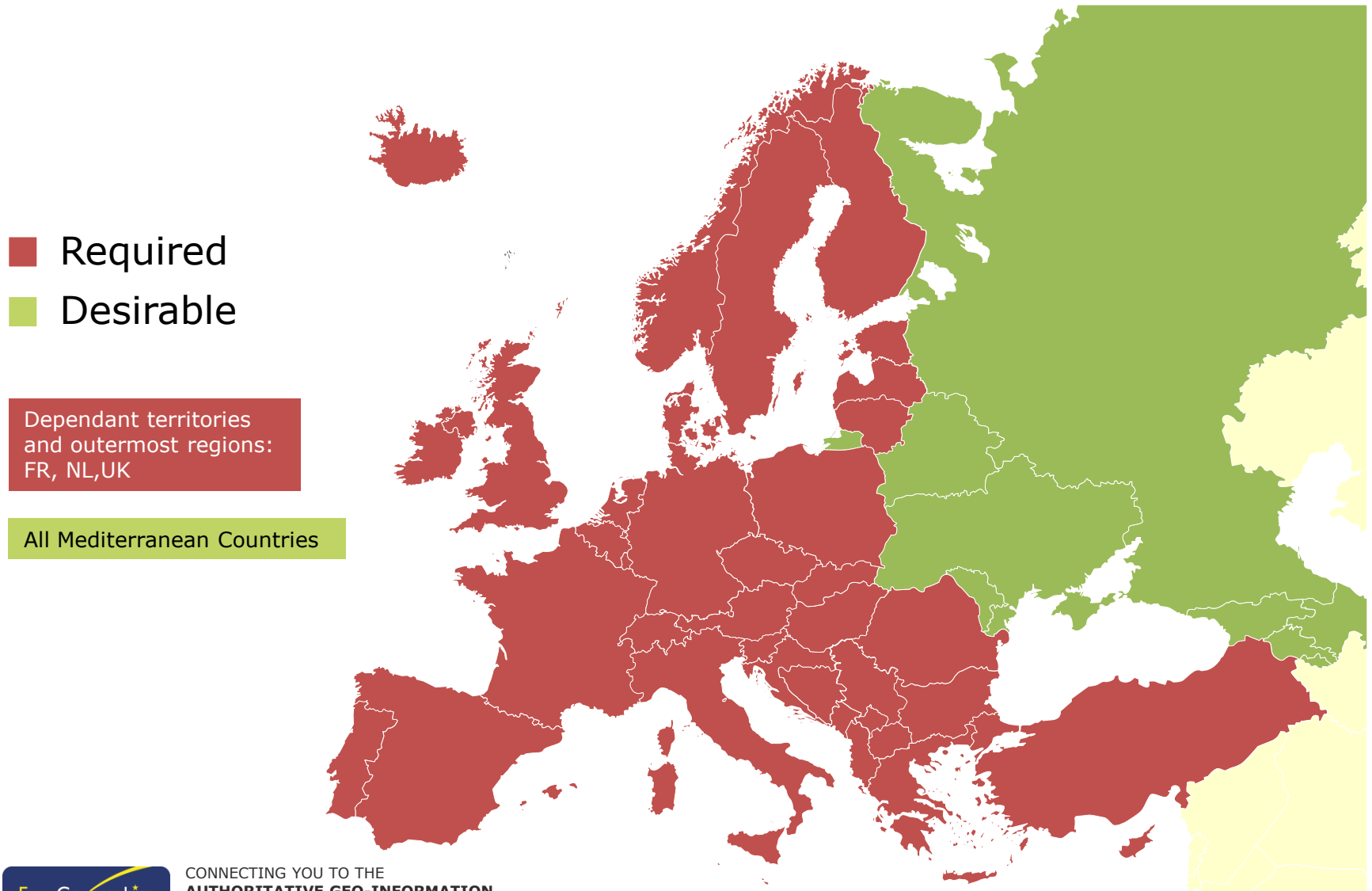


# ERM v9.0/v9.1

- Year of production 2015
- Updates:
  - Boundaries: Administrative units from EuroBoundaryMap (EBM) v10.0 (reference date 01.01.2015)
  - Hydrography
- Distribution of ERM
  - Eurostat in January 2016 (ERM v9.0)
  - Eurostat in May 2016 (ERM v9.1)
  - Customers/VARs in May 2016 (ERM v9.1)

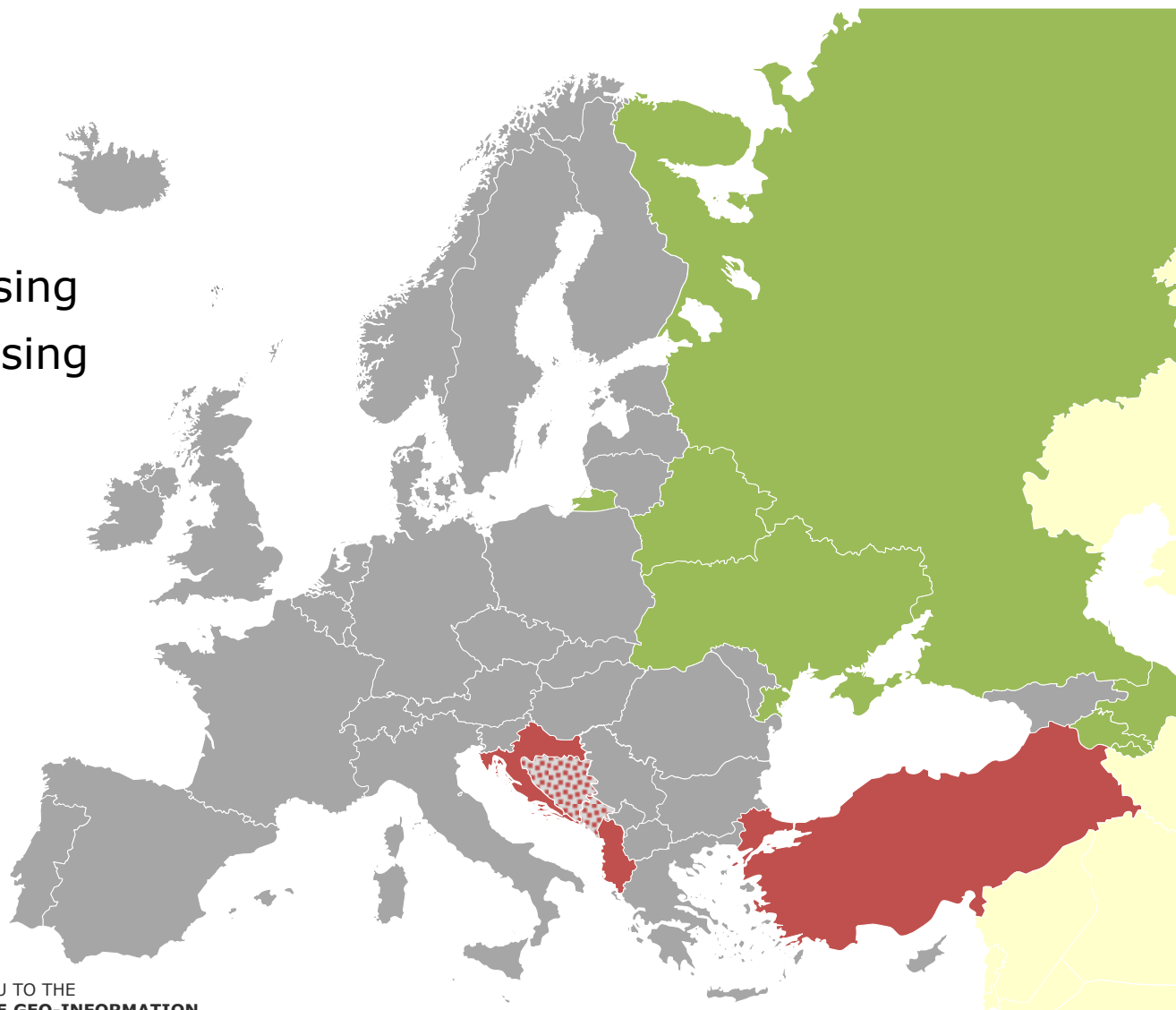


## Required Coverage (Eurostat contract)



# Geographical extent of ERM v9.0/v.9.1

- Required missing
- Desirable missing
- Vmap Level 1  
(out of date),  
national data  
required



# User feedback inquiry

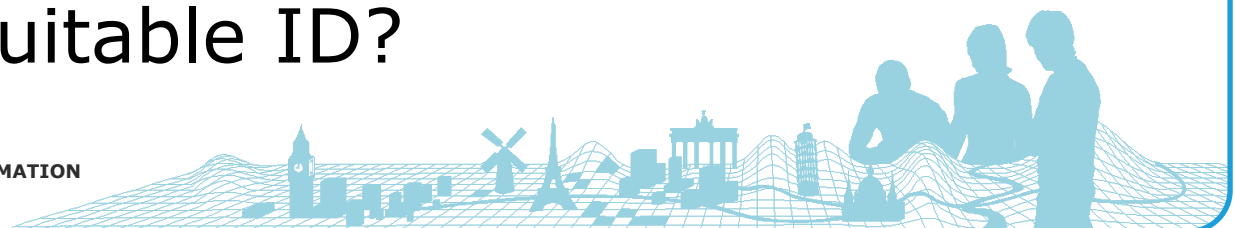
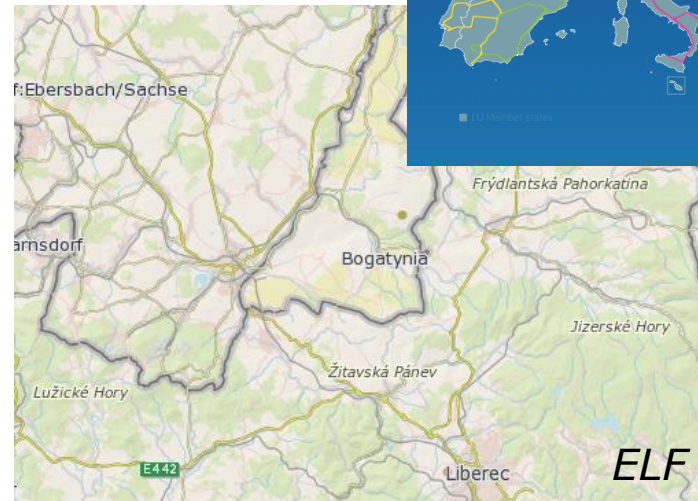
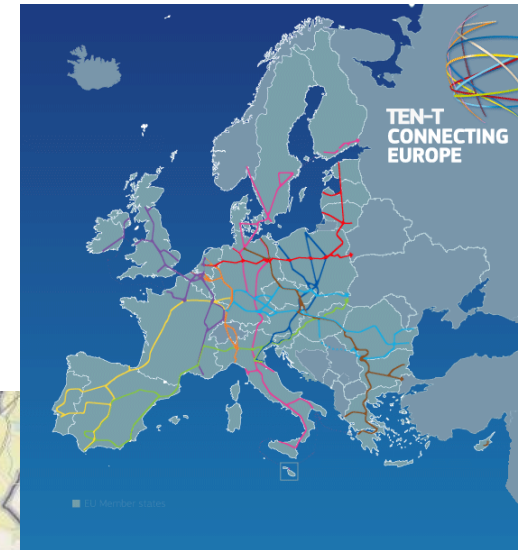
- Users of ERM within the European Commission
  - Directorate-General for Mobility and Transport (DG MOVE)
  - Directorate General Regional Policy (DG REGIO)
  - Innovation and Networks Executive Agency (INEA)
  - European Environment Agency (EEA)
- Users of ERM within EuroGeographics
  - European Location Framework (ELF)





# User feedback inquiry

- ERM is used for
  - Viewing purpose
  - Making basemaps
  - TEN-T network
- Need of full Coverage
- Vision: Linking thematic information  
→ Suitable ID?



# Update programme (Eurostat contract)

Production year		2015	2016	2017	2018
Delivery to Eurostat		Jan 2016	Jan 2017	Jan 2018	Jan 2019
Version		9.0/9.1	10.0/10.1	11.0/11.1	12.0/12.1
ERM themes	BND	BND	BND	BND	BND
	HYDRO	HYDRO		HYDRO	
	TRANS		TRANS		TRANS
	POP		POP		POP
	MISC			MISC	
	NAME			NAME	
	VEG				VEG



# ERM v10.0 update plan

- No changes in ERM data model

ERM theme	Action
BND	Updated from EBM v11.0
HYDRO	Corrected and amended to suit for TEN-T identification of the waterways
TRANS	Updated with the identification of the TEN-T network for roads, railways, airports and ports
POP	Updated and adapted to suit for mapping purpose (population)

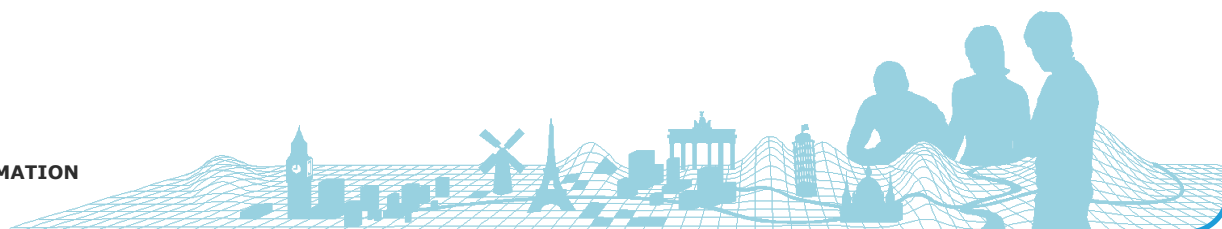
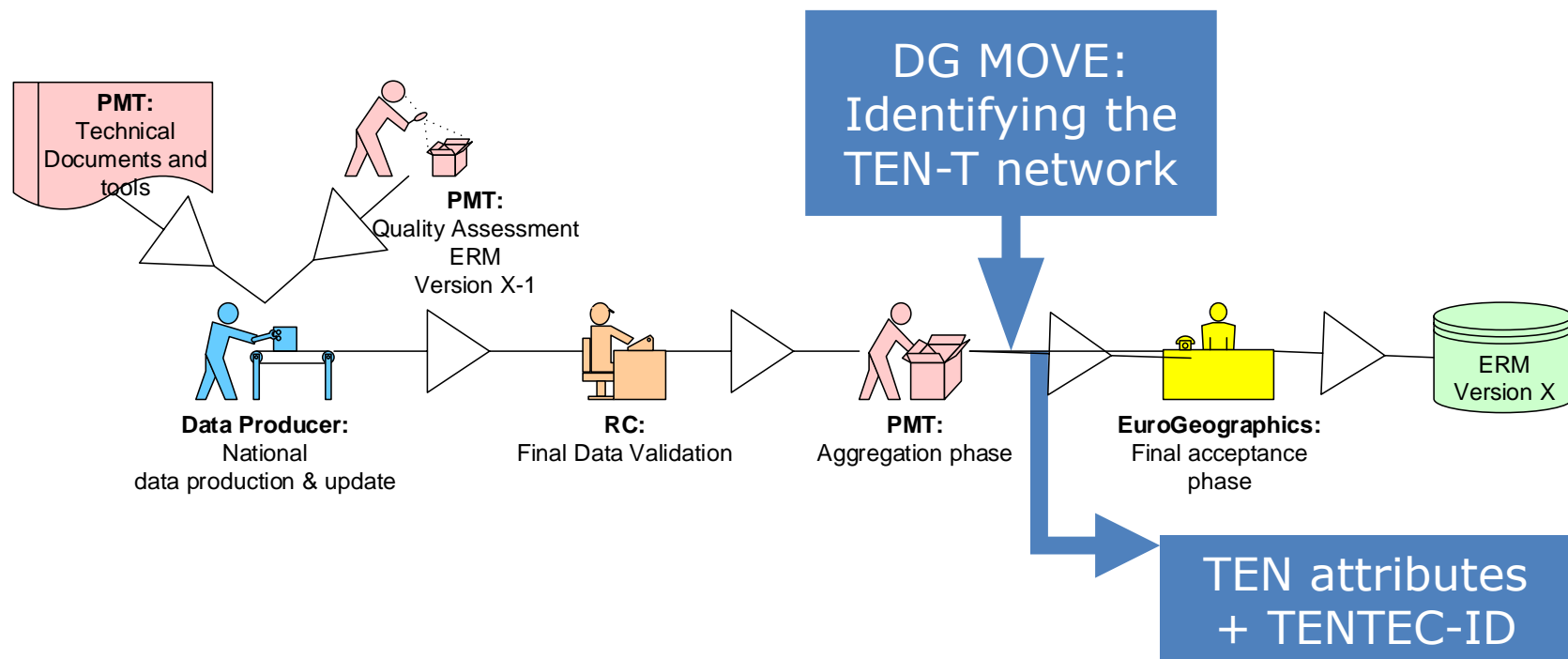


- Quality improvement
- Coverage extension



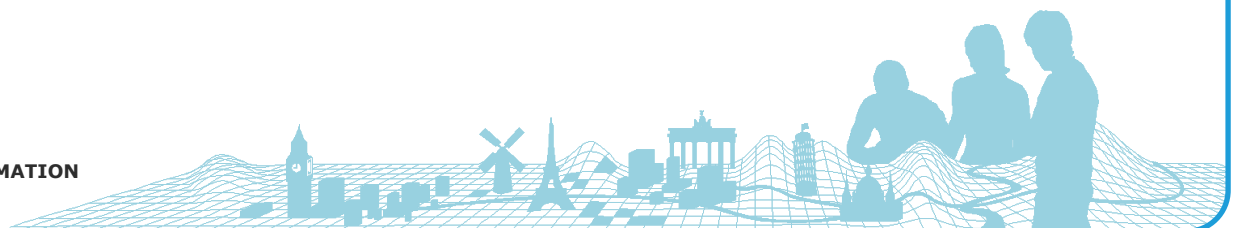
# Change in the ERM production workflow

- New producer: DG MOVE



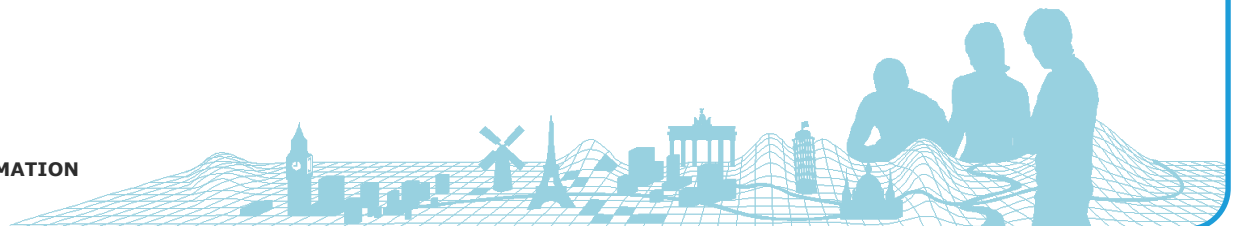
# Timetable for ERM v10.0 update

- Year of production 2016
- Provision of national update to Regional Coordinator:
  - 15. June 2016, Transport (TRANS)
  - 30. August 2016, Settlement (POP)
- Identifying the TEN-T network
- Data validation and aggregation of updated themes
- January 2017 product delivery to Eurostat



# ERM outlook

- Open challenges:
  - 5th group for south-eastern countries with new Regional Coordinator
  - Implementation of Inspire-ID
- Ongoing:  
Coverage extension



# Thank you for your attention



Contact:

Regine Elling

Federal Agency for Cartography and Geodesy

Richard-Strauss-Allee 11

60598 Frankfurt am Main / Germany

Email: [ebm@bkg.bund.de](mailto:ebm@bkg.bund.de)

