



EUROPEAN BORDER AND COAST GUARD AGENCY

Frontex GIS applications in support of the European Border and Coast Guard

Information Fusion Centre - Situational Awareness and Monitoring Division

Catarina Clemente & Katalin Bodis

EUROPEAN BORDER AND COAST GUARD AGENCY



Together with the Member States,
we ensure safe and well-functioning
external borders.

Tasks of the Agency



Risk Analysis
and
Vulnerability
Assessment



Operations



Returns



Situation
Monitoring



Coast Guard
Functions



Cooperation
with non-EU
countries
and
international
organisations



Combating
Cross-border
Crime



Research and
Innovation



Training



Respect for
fundamental
rights

Partnership and co-operation

MS - National Authorities



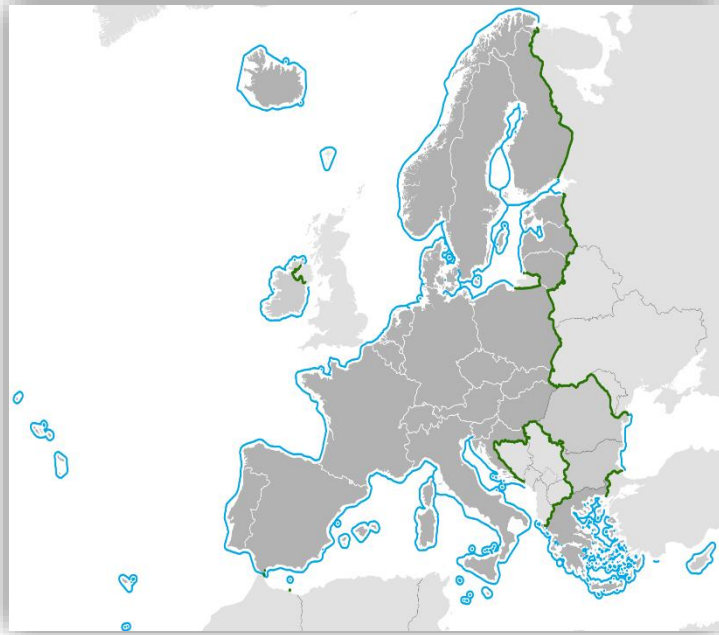
European and International Organizations



Non-EU Countries



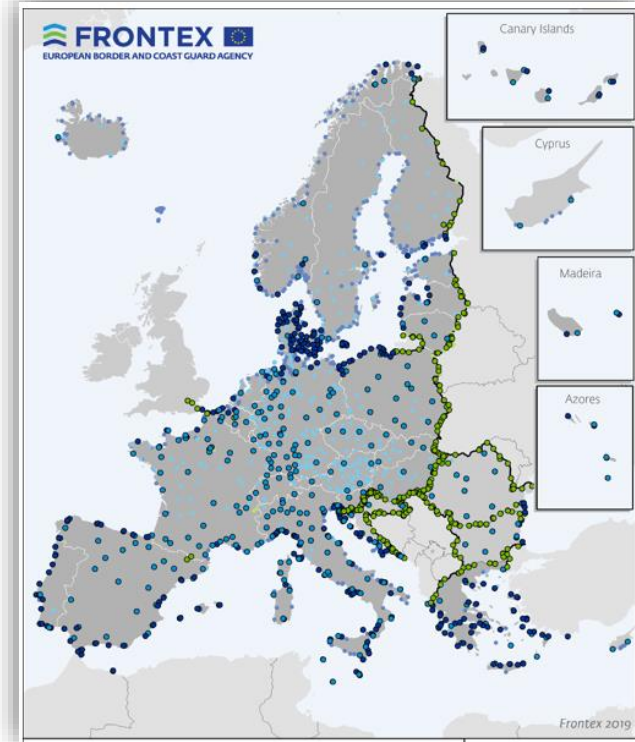
EU/SAC External Borders



Land borders ~10 000 km
Coastline ~40 000 km

Border crossing points:

- Land 481
- Air 675
- Sea 811



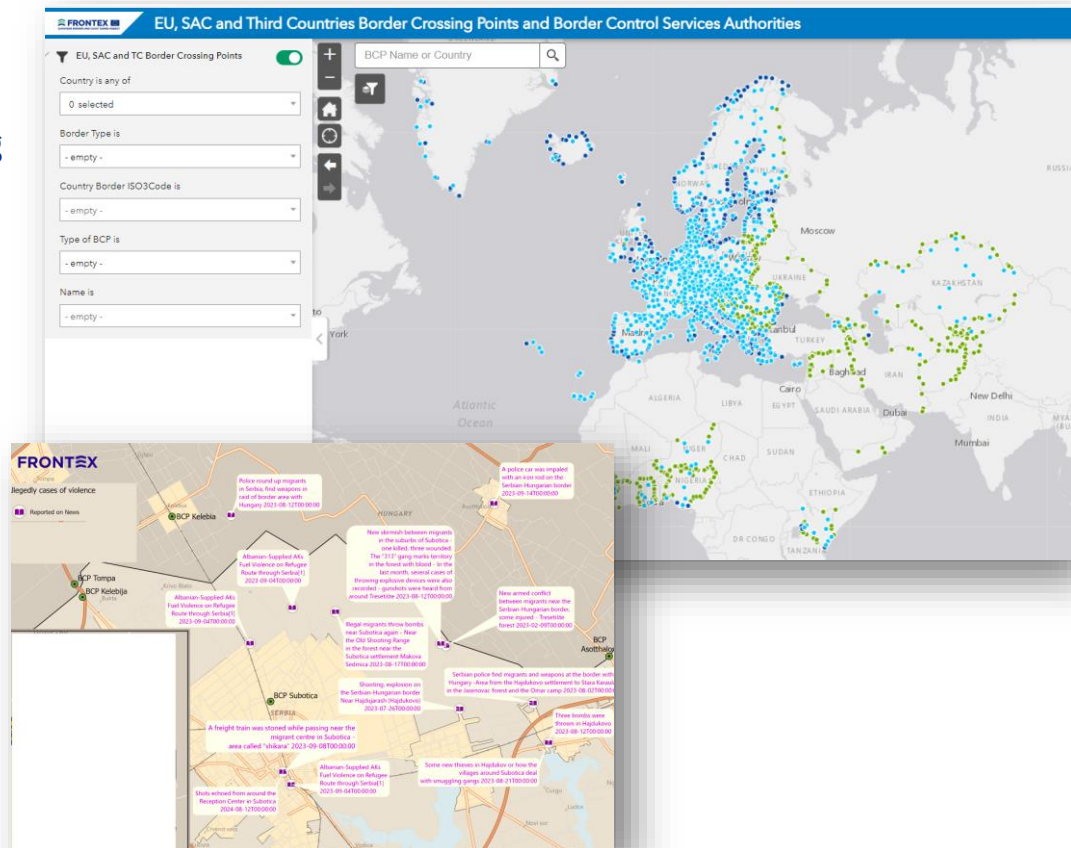
Tasks of the Geospatial Team



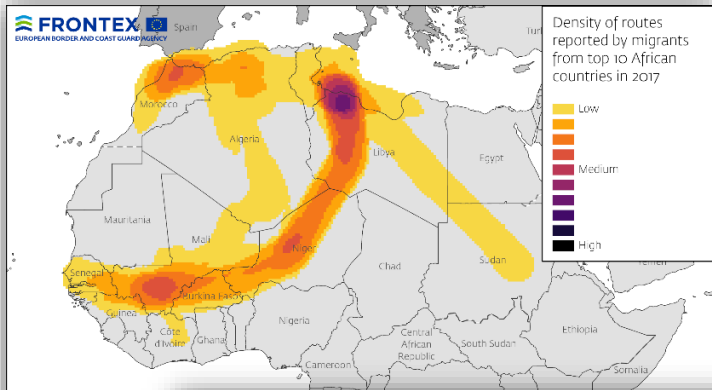
- Data collection and maintenance
- Maps and Cartographic products
- Geospatial modeling and analysis
- Web map applications and Services
- Geospatial Intelligence (GEOINT) & Imagery Intelligence (IMINT)
- GIS contribution for Copernicus Border Surveillance Service (Copernicus Security Service)

Data Collection and maintenance

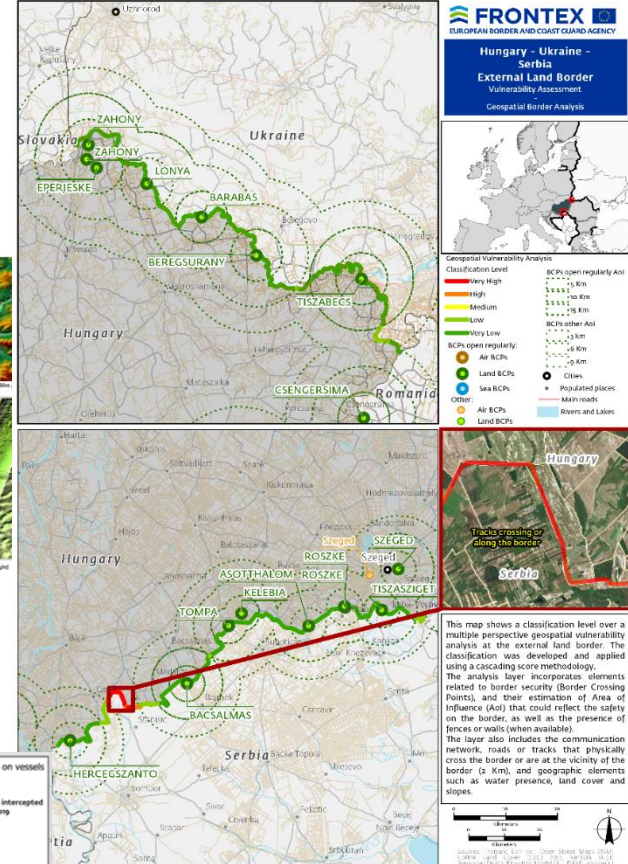
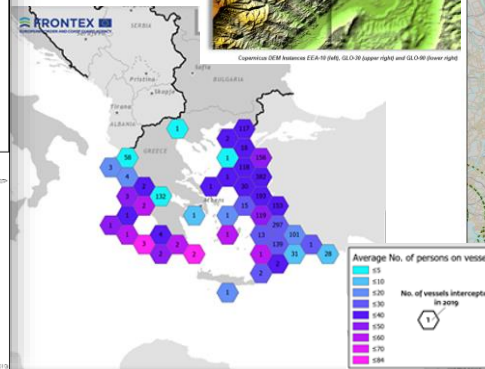
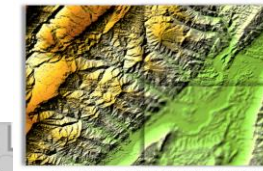
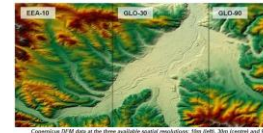
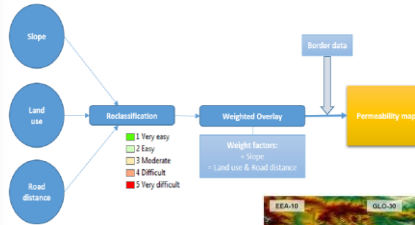
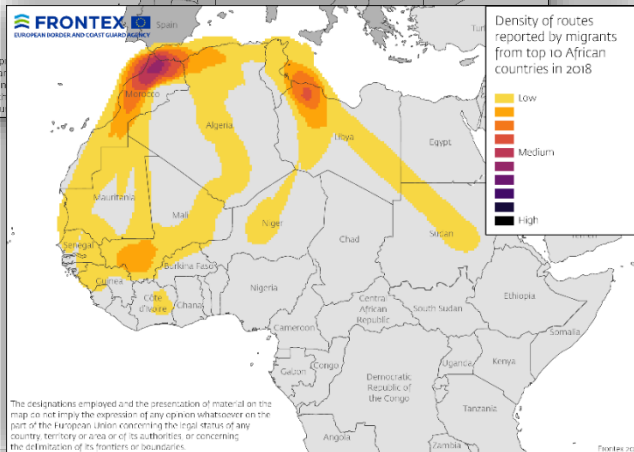
- Dataset of all the MS/SAC border crossing points
- Data set of the external border section as per art 34 of the ECBG regulation
- Reference data (e.g administrative levels, Territorial waters, airports, settlements, transportation network...)
- Datasets for situation monitor and awareness
- MGCP dataset



Geospatial Analysis - Spatial patterns



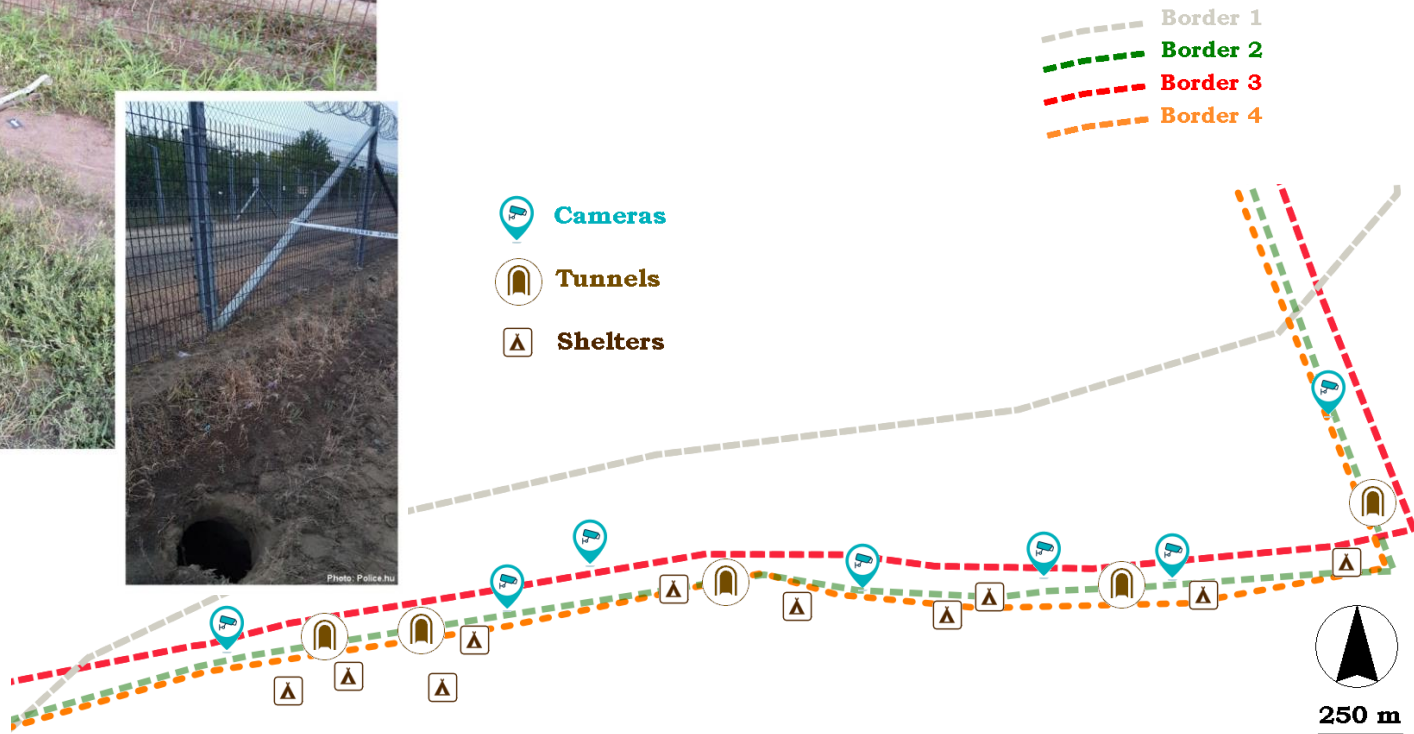
The designations employed and the map do not imply the expression of any opinion whatsoever on the part of the European Union concerning country, territory or area or of its authorities or concerning the delimitation of its frontiers or boundaries.



Large scale mapping data and in situ measurement



Country borders from different sources



Frontex Geoportal

Collaborative environment to Frontex units

- Access to Geospatial products, services
- Create and share content
- Dedicated Sites



Web Map Applications

- Access to the latest updated information and indicators
- Customized for analysts requirements
- Contribution to situational picture compilation

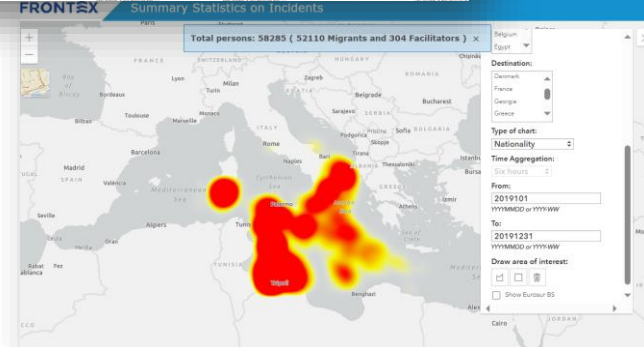


FRONTEx

Map Production Application

1. Select report type:

Daily Regional Overview
Daily European Situational Picture
Migration Daily Report WB
Situational Report for EU-BLR borders
Migration Flows UKR-EU and EU-UKR
Migration Flows RUS-EU
Migration Flows EU-RUS
Migration Flows MDA-UKR-ROU
Deployments EU Eastern borders



- Automatization of Map production

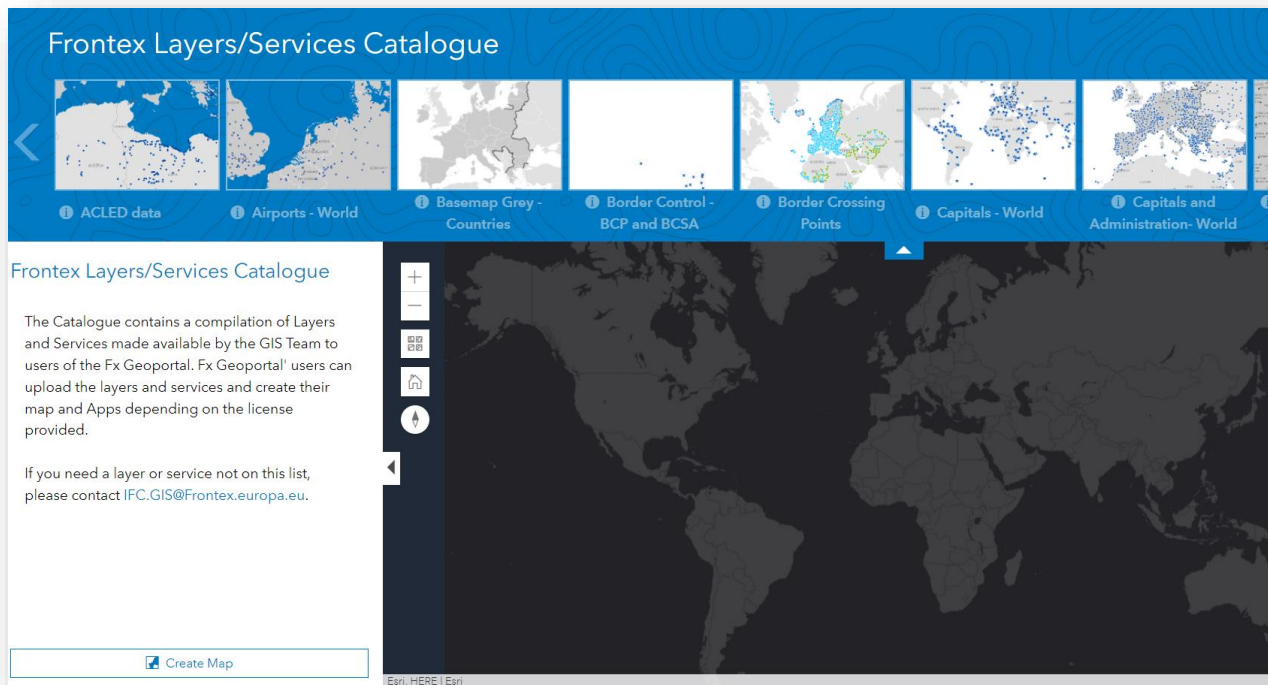
- Situation awareness and analysis

- Apps for Operational Analysis

Web map Services

- Availability of several web map services
- Integration with other Fx Systems

- JORA
- OPERA
- EUROSUR



Imagery analysis



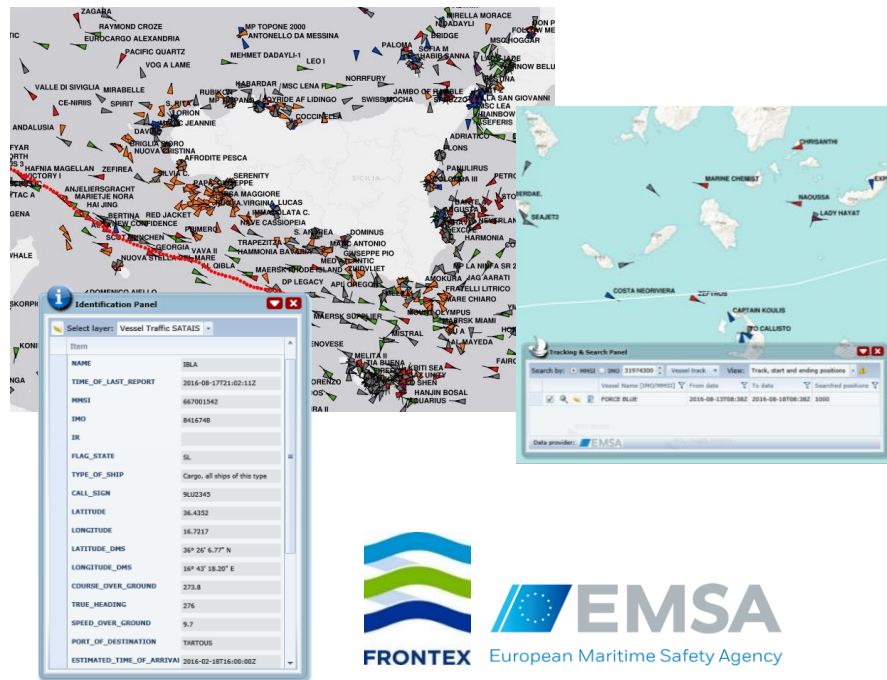
FRONTEX



EUSC

Interagency Collaboration

Vessel tracking and detection

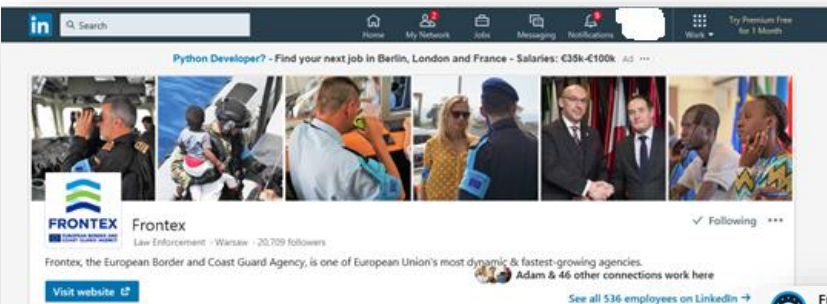


FRONTEX



EMSA European Maritime Safety Agency

Press releases and social media



Frontex
Law Enforcement · Warsaw · 20,709 followers

Frontex, the European Border and Coast Guard Agency, is one of European Union's most dynamic & fastest-growing agencies.

Visit website

See all 536 employees on LinkedIn



Frontex
20,709 followers

In September, the number of detections of illegal border crossings on Europe's main migratory routes rose 14% from the previous month to more than 17,000 due to higher arrivals on the Greek islands in the eastern Aegean. Despite the...

35 - 2 Comments

Community Hashtags

- #euprotects 176 followers
- #frontex 89 followers
- #bordermanagement 80 followers




Frontex @Frontex · 27 Sep 2022

Latest on EU borders:

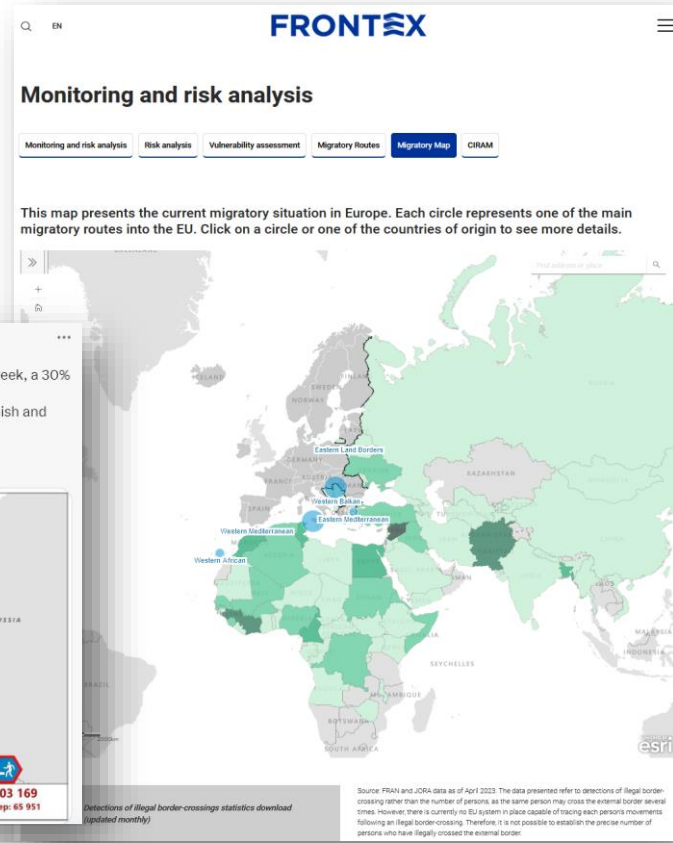
- 66 000 Russian citizens have entered the EU over the past week, a 30% increase in comparison to the preceding week
- Most of the Russian citizens are entering the EU through Finnish and Estonian border crossing points

More frontex.europa.eu/media-centre/n...



Legal entries of Russian Nationals in the EU

Total: 1 303 169
19 Sep - 25 Sep: 65 951

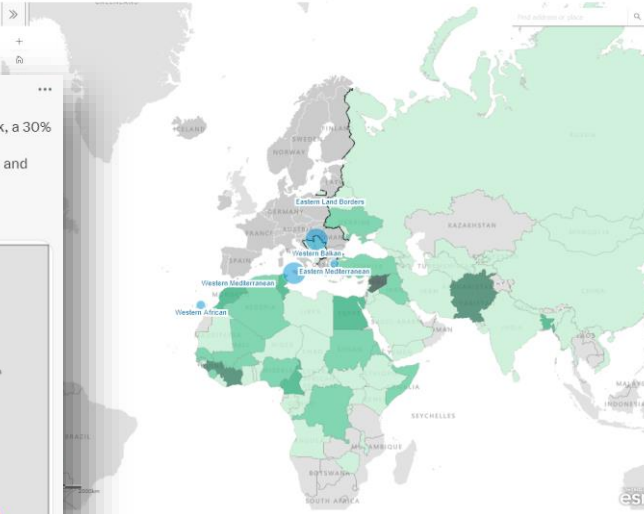


FRONTEx

Monitoring and risk analysis

Monitoring and risk analysis | Risk analysis | Vulnerability assessment | Migratory Routes | Migratory Map | CRRM

This map presents the current migratory situation in Europe. Each circle represents one of the main migratory routes into the EU. Click on a circle or one of the countries of origin to see more details.



Detections of illegal border-crossings statistics download (updated monthly)

Source: FRON and JCR data as of April 2023. The data presented refer to directions of illegal border-crossing rather than the number of persons, as the same person may cross the external border several times. However, there is currently no EU system in place capable of tracing each person's movements following an illegal border-crossing. Therefore, it is not possible to establish the precise number of persons who have illegally crossed the external border.

