



Increased role of NMCA's due to COVID pandemic –
raising the awareness and value of authoritative data

Eurostat's perspective

Márta NAGY-ROTHENGASS, Oliver MUELLER

Eurostat – the statistical office of the European Union

- **Our mission**

To provide high-quality statistics and data on Europe

- **Our values**

Show respect for our staff, partners and users

- Strive for excellence in everything we do
- Drive innovation in official statistics
- Promote service orientation
- Uphold professional independence

Eurostat

- Seven Directorates, 800 staff:
 - Resources
 - Methodology; Dissemination; Cooperation in the European Statistical System
 - Macro-economic statistics
 - Government finance statistics (GFS) and quality
 - Sectoral and regional statistics
 - Social statistics
 - Business and trade statistics
- Coordination role of statistical activities
 - Regulation No 223/2009: Eurostat = statistical authority of the Union
 - Ensuring production of European statistics
 - According to established rules and principles (Code of Practice)
 - Coordinating statistical activities of the institutions and bodies of the Union
 - Active in harmonisation and standardisation
- Driving force of the European Statistical System (ESS)
 - Eurostat + Statistical Institutes of EU Member States, EFTA countries and candidates
 - Role of Other National Authorities involved in statistical production

Your main contact in Eurostat – E4 - Regional statistics and geographical information Unit

Regional statistics

- Coordination of regional statistics in Eurostat
- City statistics data collection and dissemination
- Management of the NUTS classification and territorial typologies, including legislation
- International collaboration on urbanization
- European regional yearbook and regions in Europe – Statistics visualised

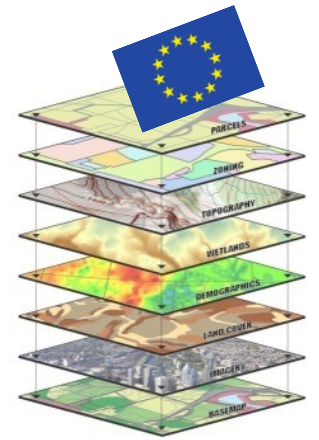
Geographical information management

- Management of a Geographical Information reference database of the European Commission
- Coordination of Commission GIS activities
- Collection of core geospatial data sets
- Maps and visualisation services
- Tools (geocoder, routing, isochrones, map-making, ...)
- International collaboration

LUCAS

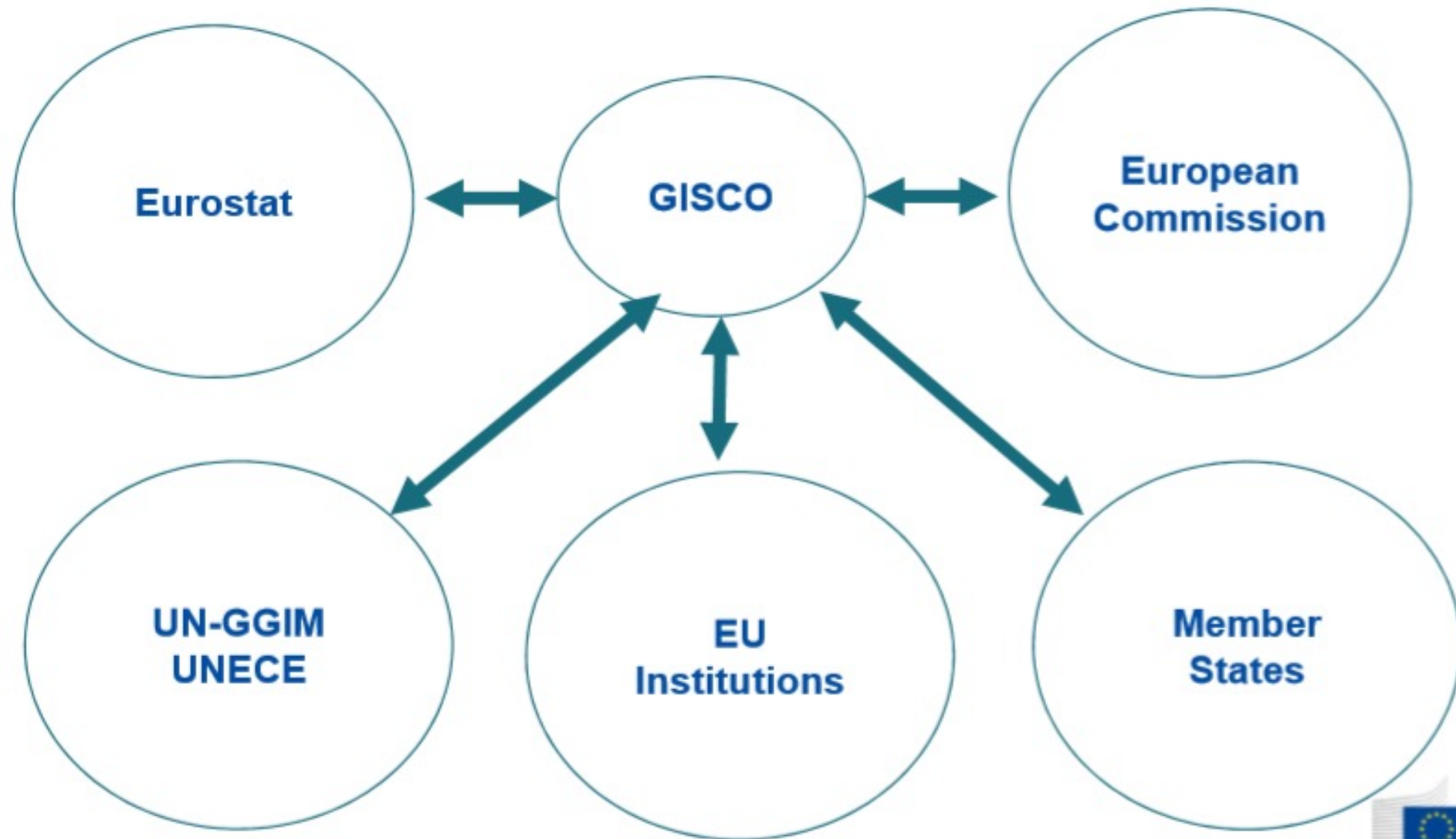
- Land cover and land use surveys
- Earth observation and statistics
- Relevant statistics
- Analyses monitoring soil quality and biodiversity

GISCO – The Geographical Information System of the Commission



- Permanent service of the European Commission (Eurostat)
- Role: Answers needs of European Commission, Eurostat and the ESS for geographical information at EU/national/regional levels.
 - Provision of GIS (reference) data, services and software,
 - Support cartographic and spatial analysis activities,
 - Coordinates commission-wide GI activities,
 - Stimulate the use of GIS to support commission activities,
 - Support activities on the integration of statistical and geospatial information.

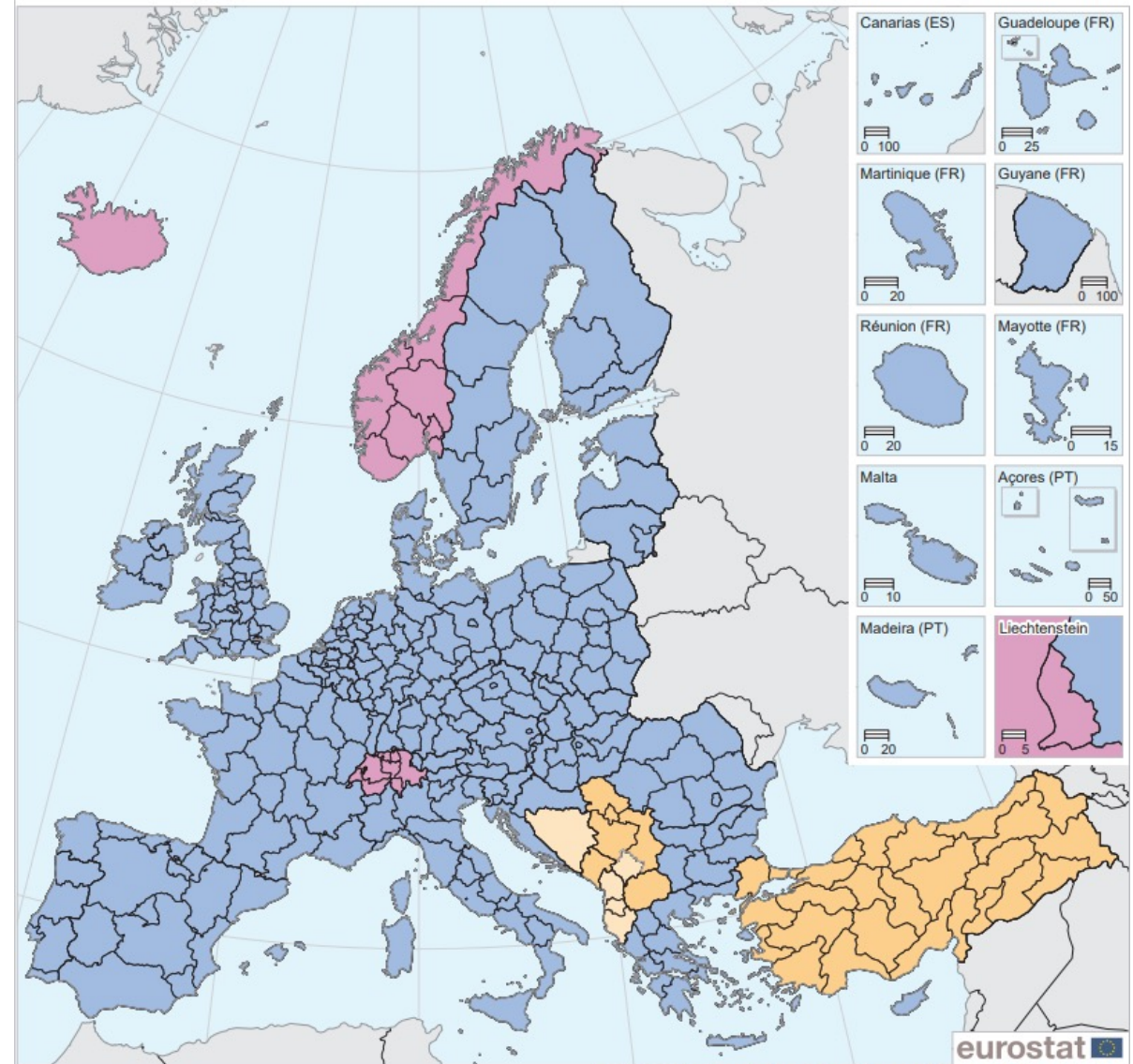
GISCO - Stakeholders



GIS reference data

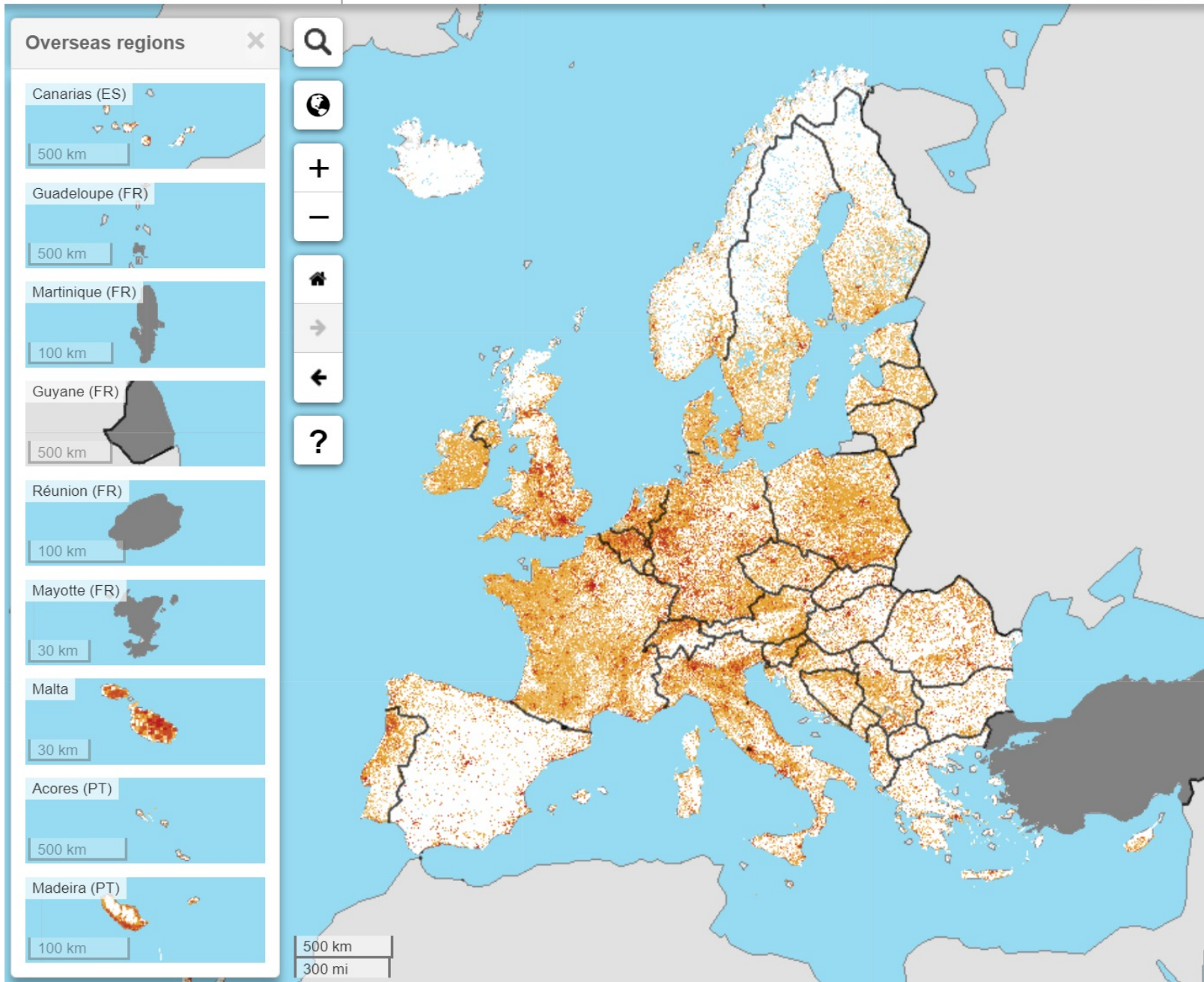
- Statistical/administrative units
 - Countries
 - Regions
 - LAUs
- Population distribution
- Transport networks
- Services

NUTS 2 regions in the Member States of the European Union (EU-28) according to NUTS 2016, with corresponding statistical regions in EFTA countries, candidate countries and potential candidates

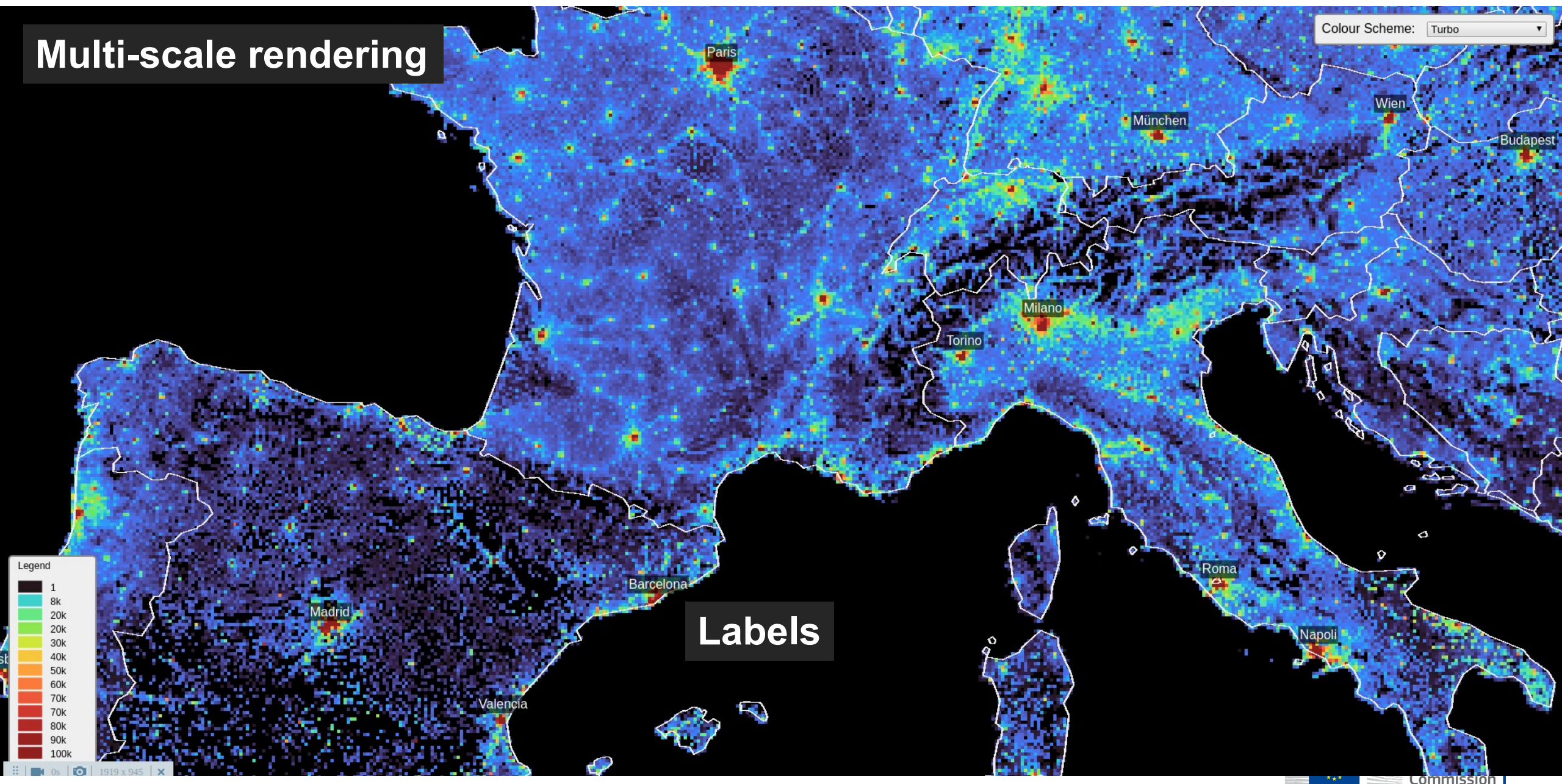


Administrative boundaries: © EuroGeographics © UN-FAO © Turkstat
Cartography: Eurostat — GISCO, 02/2019

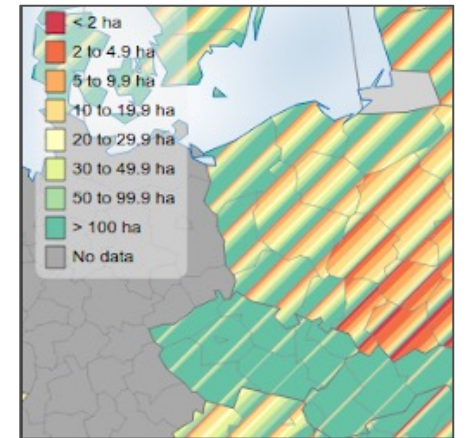
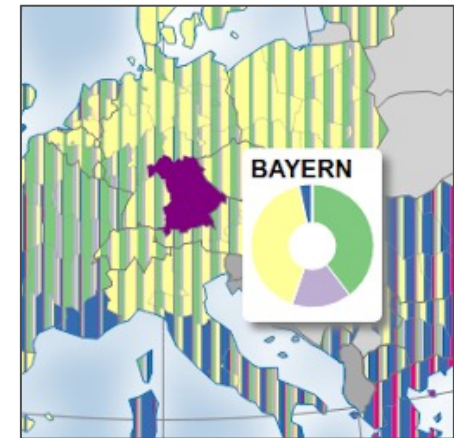
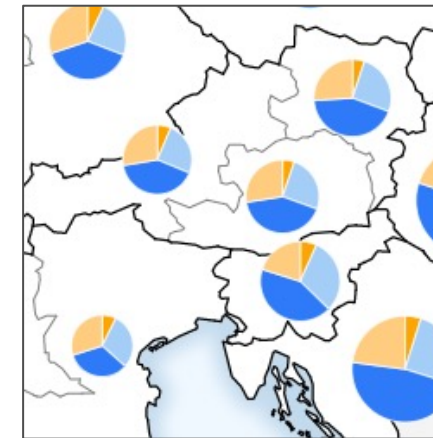
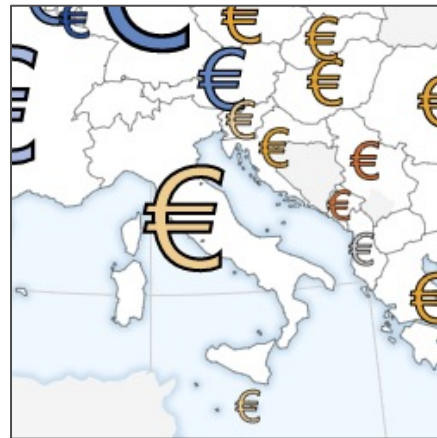
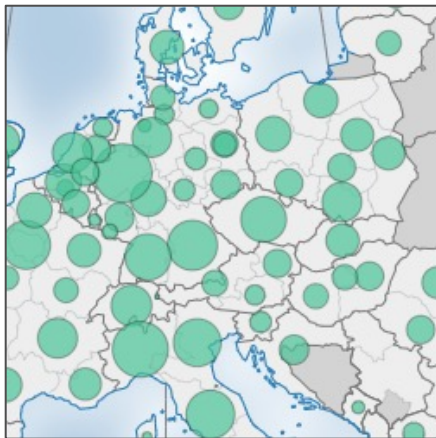
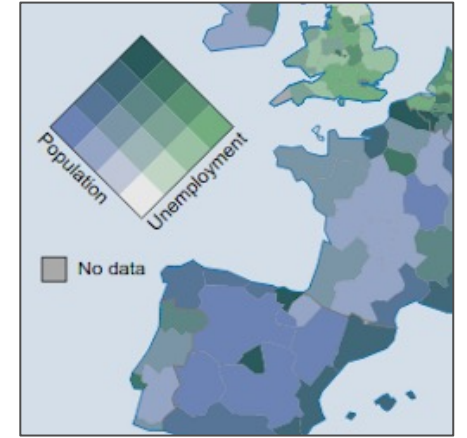
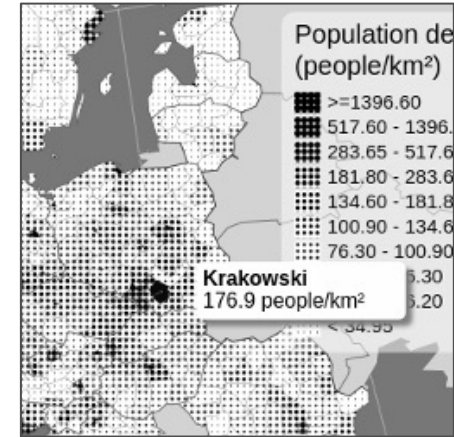
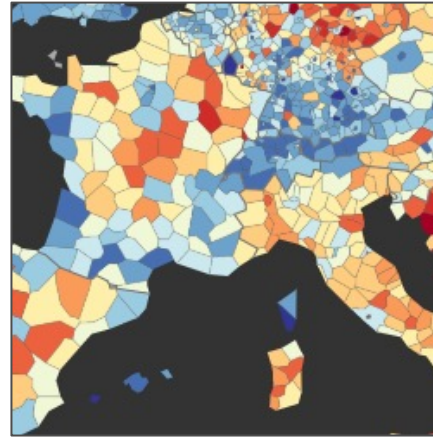
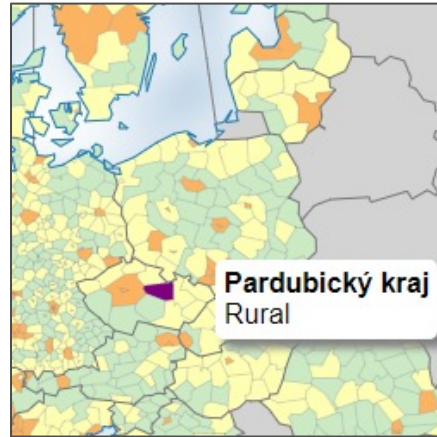
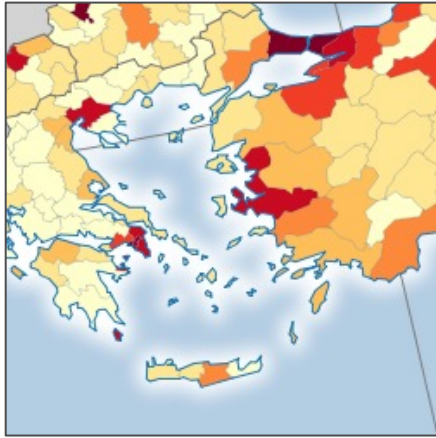
- Member States of the European Union (EU-28)
- EFTA countries
- Candidate countries
- Potential candidates



Multi-scale rendering

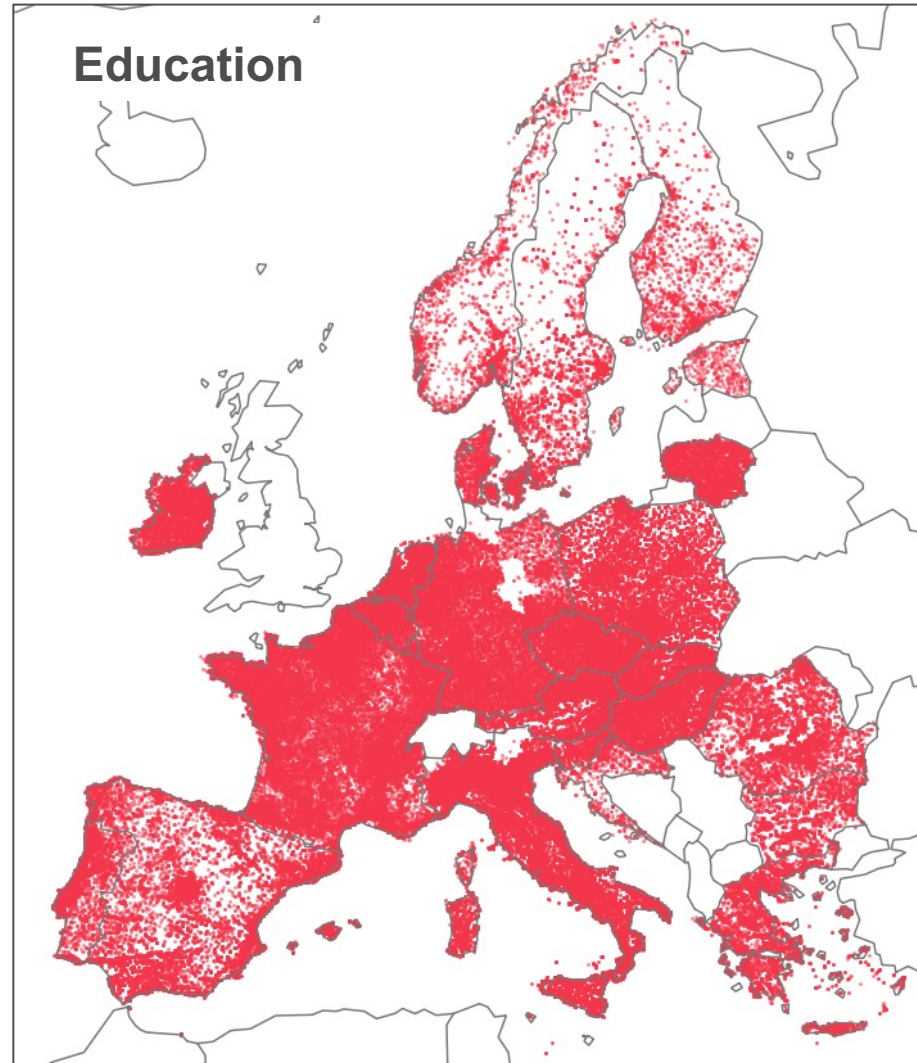
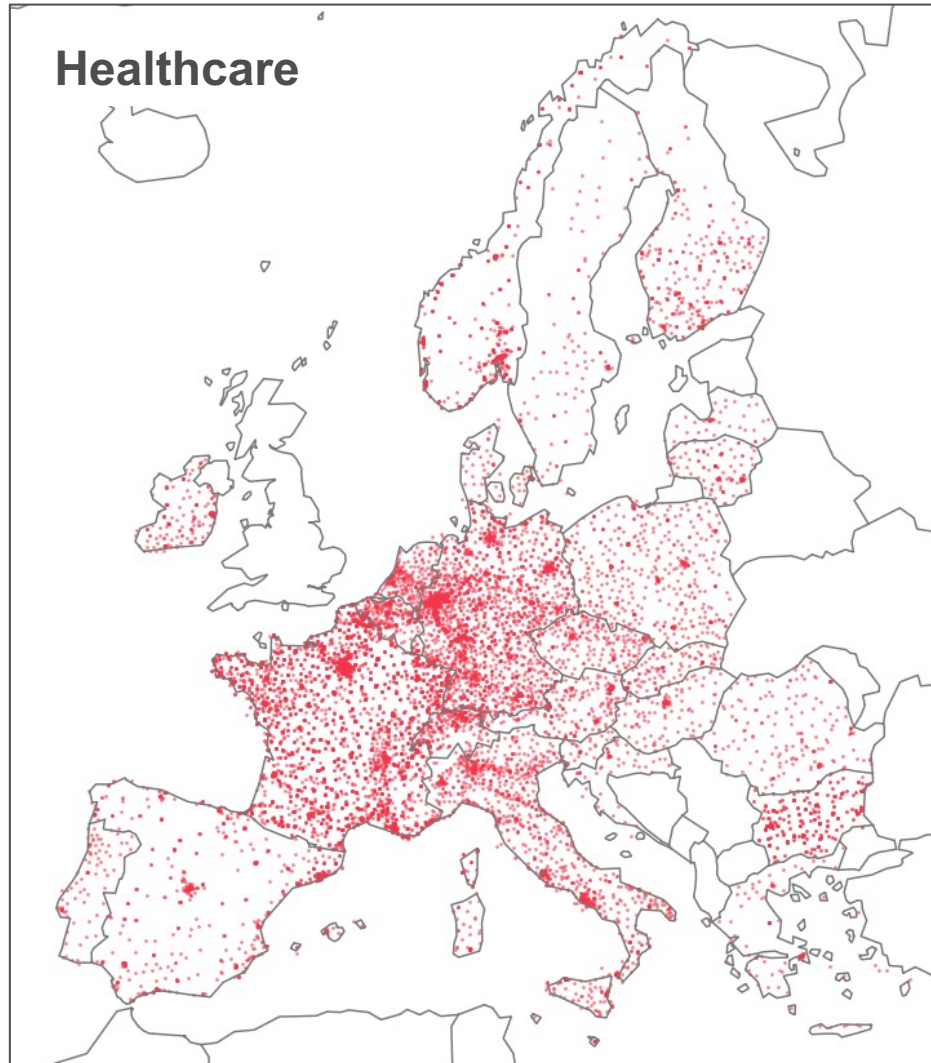


Javascript libraries: Eurostat-map.js

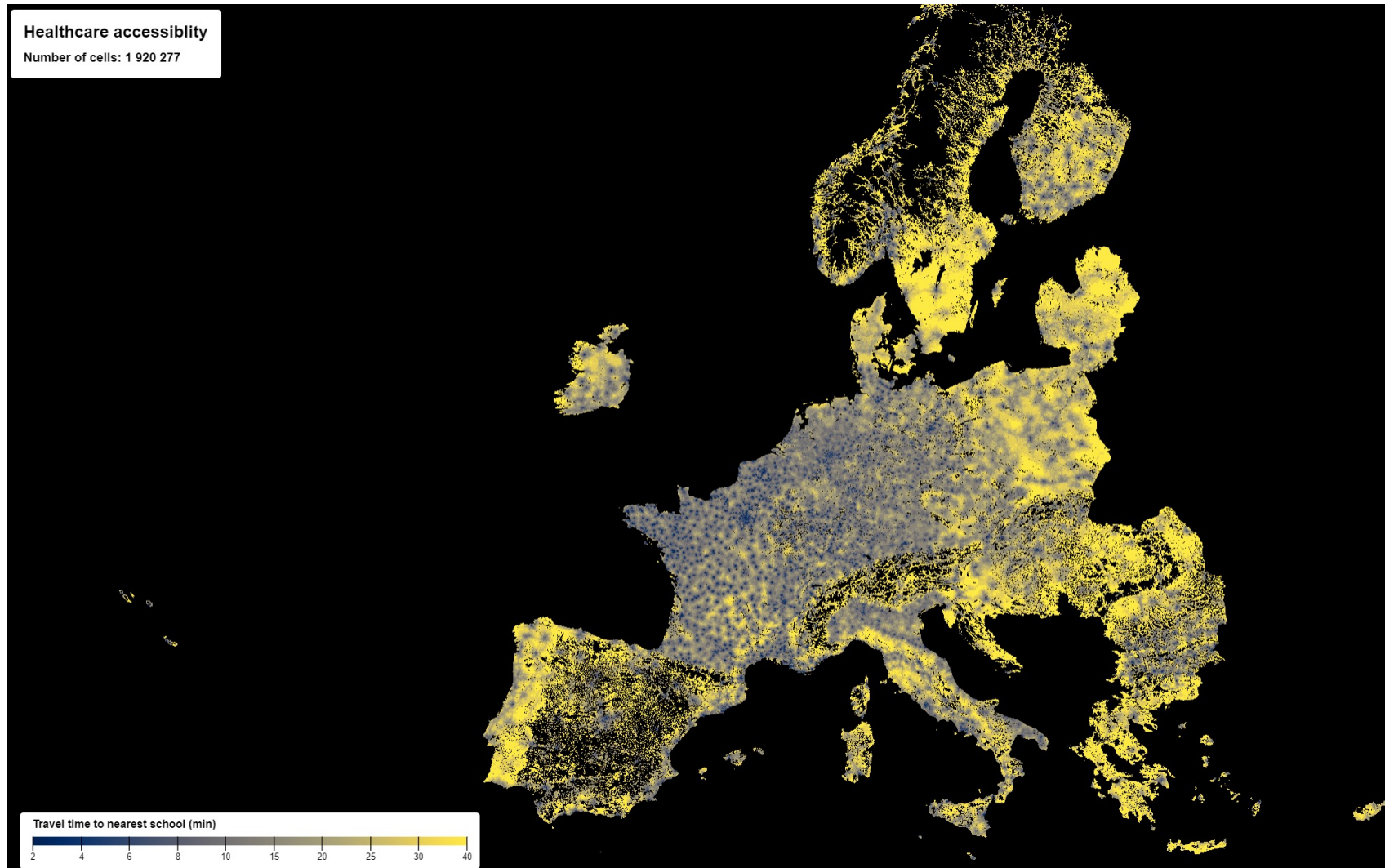


Demo on: <https://observablehq.com/@joewdavies/eurostat-map-js>

EC Geospatial Data, services; examples

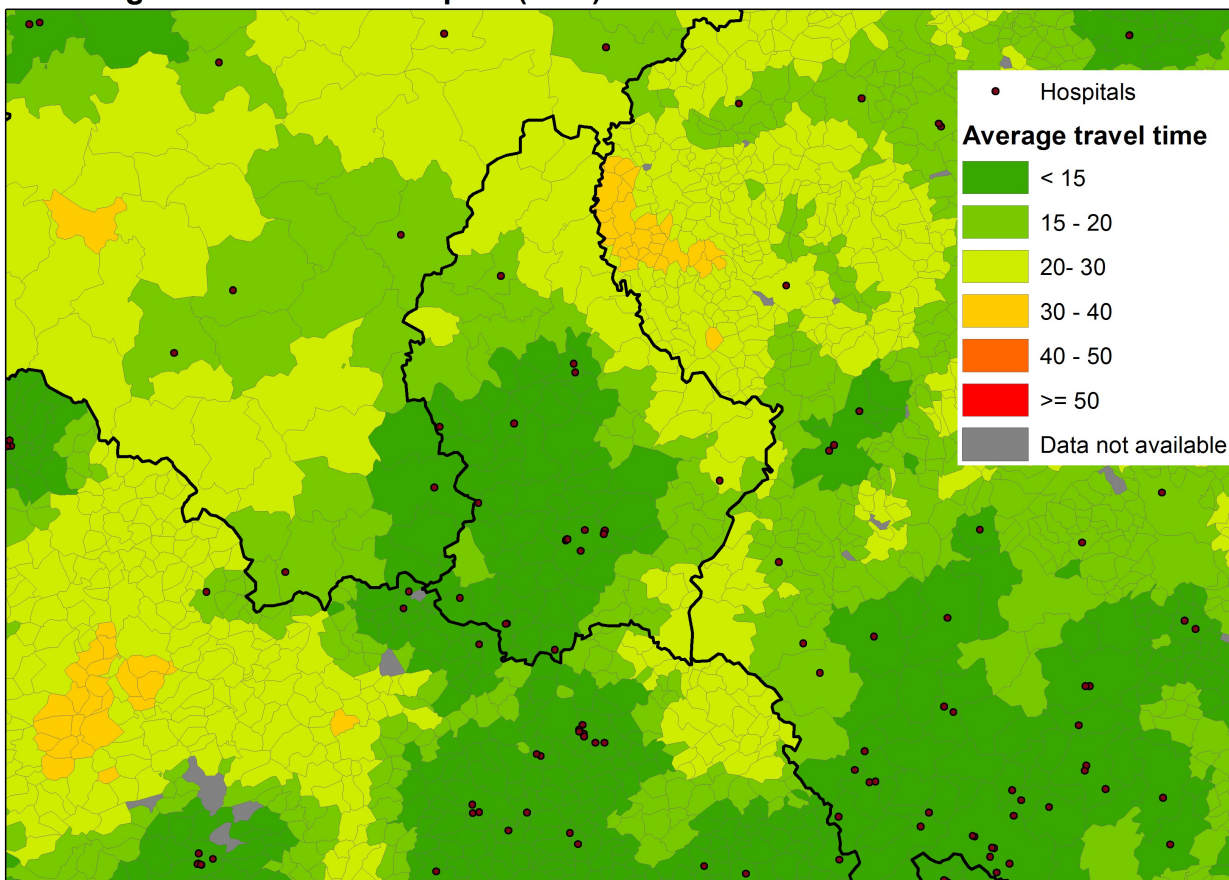


Geospatial analysis, aggregating into statistics (1/3)

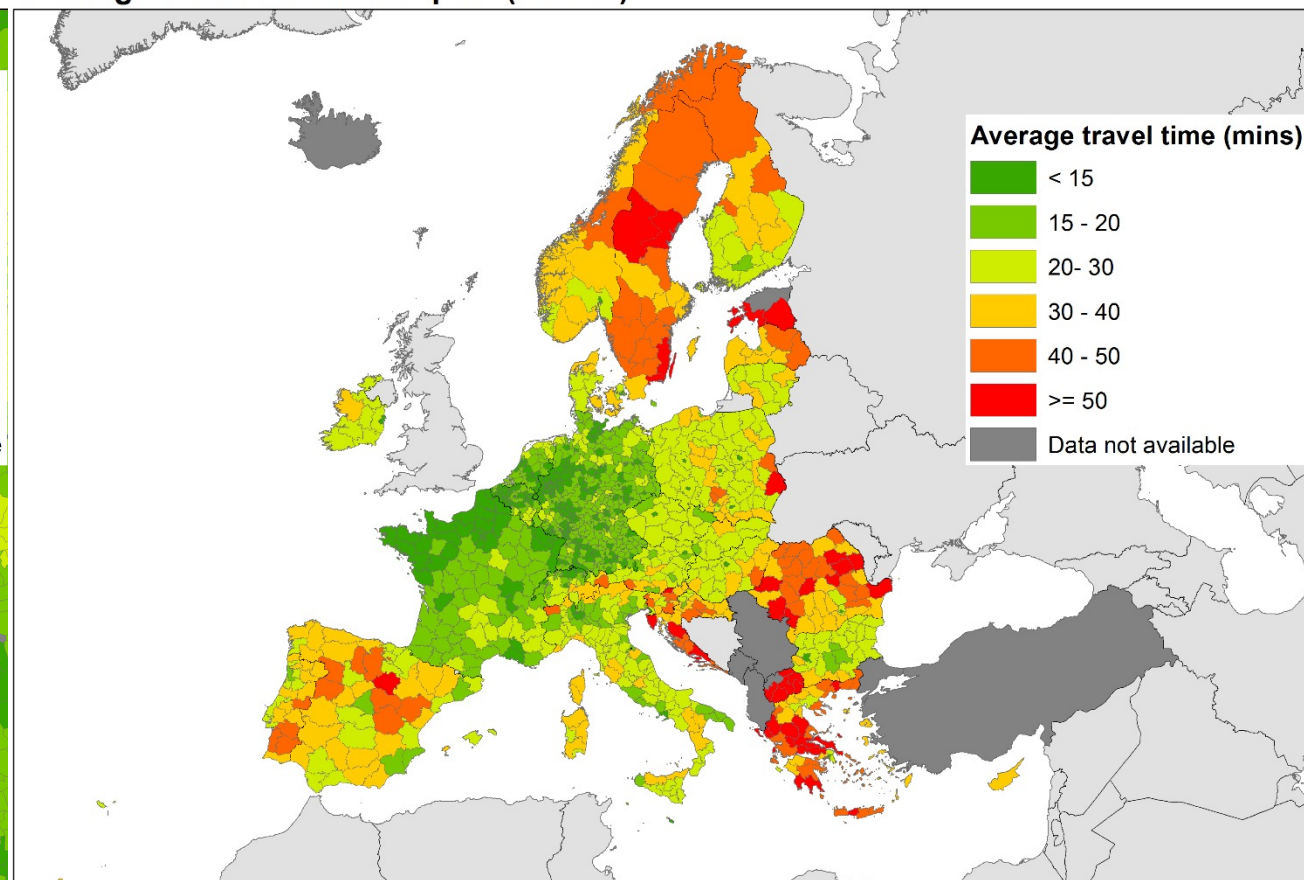


Geospatial analysis, aggregating into statistics (2/3)

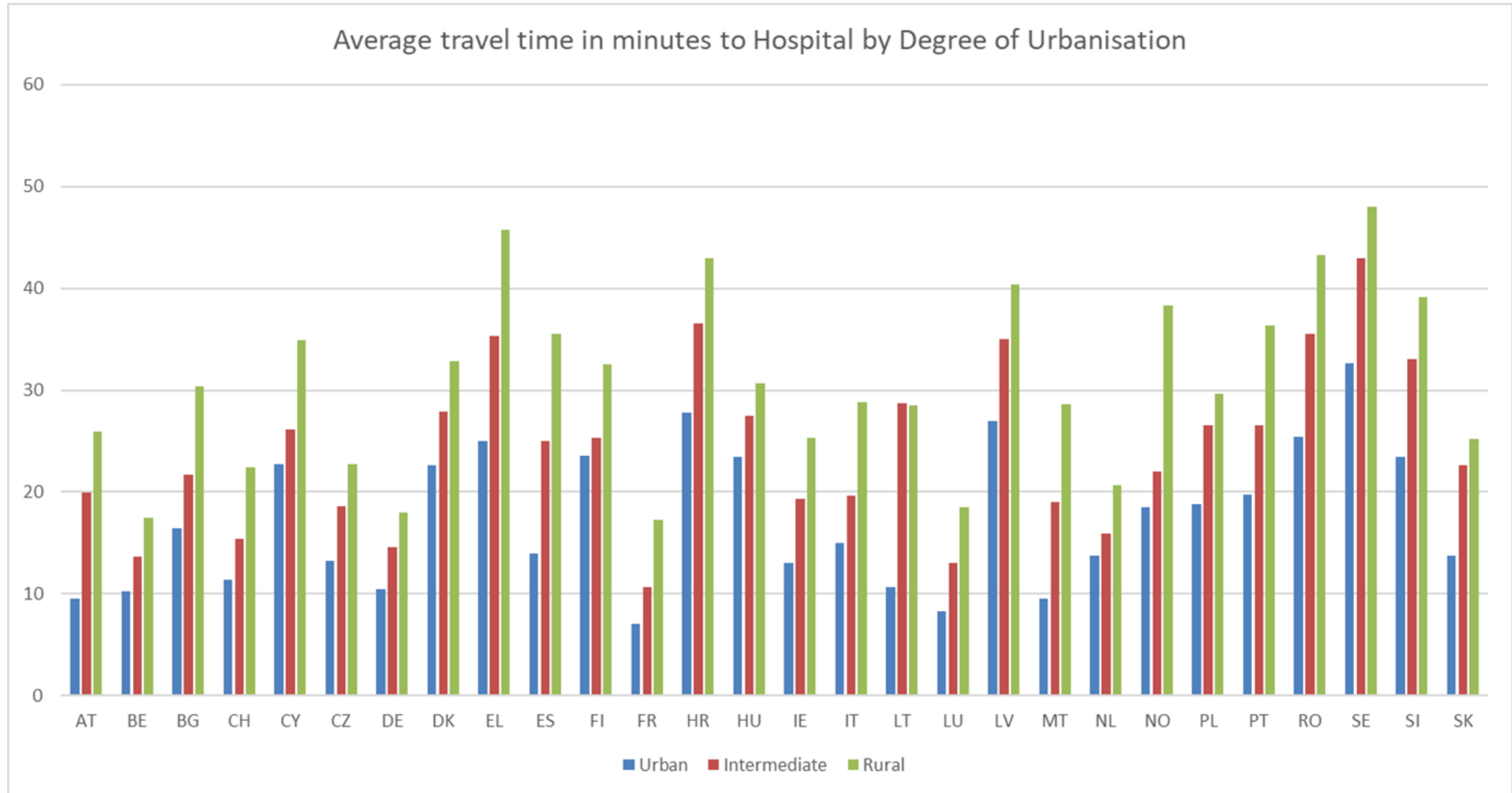
Average Travel time to Hospital (LAU)



Average Travel time to Hospital (NUTS3)

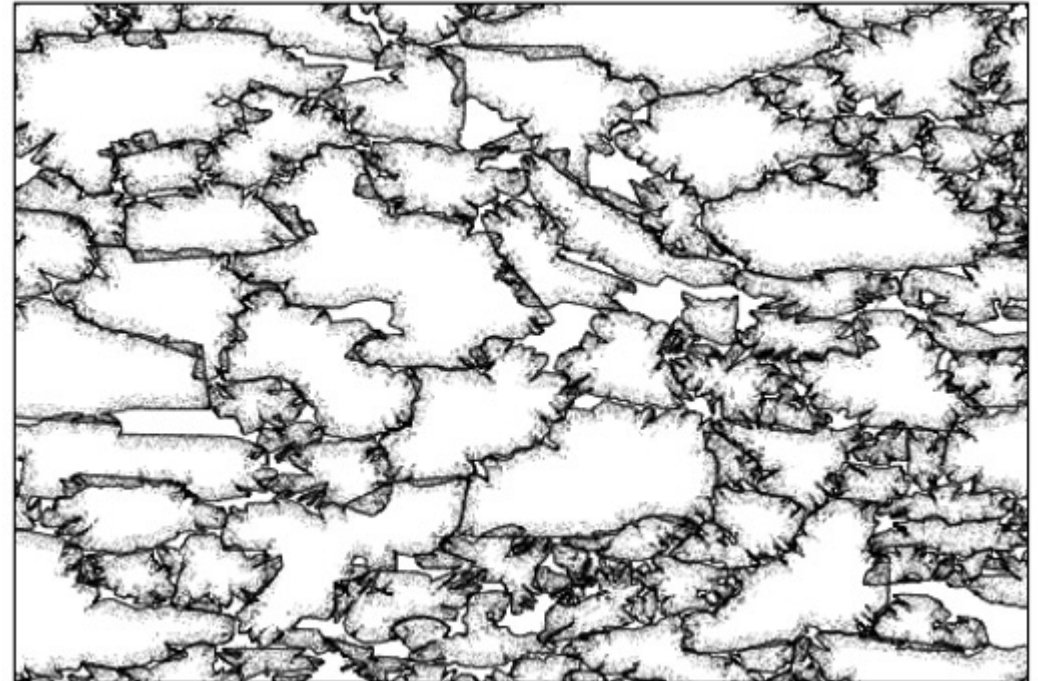


Geospatial analysis, aggregating into statistics (3/3)



Geospatial core data themes

- Buildings (BU),
- Cadastral Parcels (CP),
- Addresses (AD),
- Administrative units (AU),
- Statistical Units (SU),
- Transport Networks (TN),
- Land Parcel Information System (LPIS)
- Postal Codes (PC)
- Utility and governmental services (US)



General requirements for data themes

- Unique and persistent identifier
- full geographic extent of the territory
- at the scale ~1: 5000-10.000
- update frequency (incremental) should be once a year or better
- INSPIRE mechanism of life-cycle attributes and versioning.

What do we do / want to do with the data?

- Accessibility analysis
 - Travel time to nearest:
 - School
 - Hospital
 - Doctor
 - Pharmacy
 - Grocery
 - Cinema / restaurant / pub
 - Public green spaces
- Catchment / coverage area analysis
 - Regional airports
 - Railway stations
 - Leisure time facilities
 - Police / firefighters coverage area
- Districts analysis
 - Industrial / business areas and contributions to GDP
 - Residential and other areas, traffic and congestion mapping
 - ...

Cross-border and non-cross-border

What do we offer?

- Cooperation



- Channels of collaboration
 - Mapping and Cadastral agencies can become „Other National Authorities“ (ONA)
 - Regular contacts with stakeholders
 - Cooperation in Expert Groups
 - Publicly funded projects, where ONAs are eligible for receiving grants

Keep in touch



ec.europa.eu/eurostat



[@EU_Eurostat](https://twitter.com/EU_Eurostat)



[@EurostatStatistics](https://www.facebook.com/EurostatStatistics)



[Eu_eurostat](https://www.instagram.com/Eu_eurostat)



[Eurostat](https://www.youtube.com/Eurostat)



[Eurostat](https://www.linkedin.com/Eurostat)

Thank you

ESTAT-GISCO@ec.europa.eu



© European Union 2020

Unless otherwise noted the reuse of this presentation is authorised under the [CC BY 4.0](https://creativecommons.org/licenses/by/4.0/) license. For any use or reproduction of elements that are not owned by the EU, permission may need to be sought directly from the respective right holders.

Slide xx: element concerned, source: e.g. [Fotolia.com](https://www.fotolia.com/); Slide xx: element concerned, source: e.g. [iStock.com](https://www.istock.com/)

