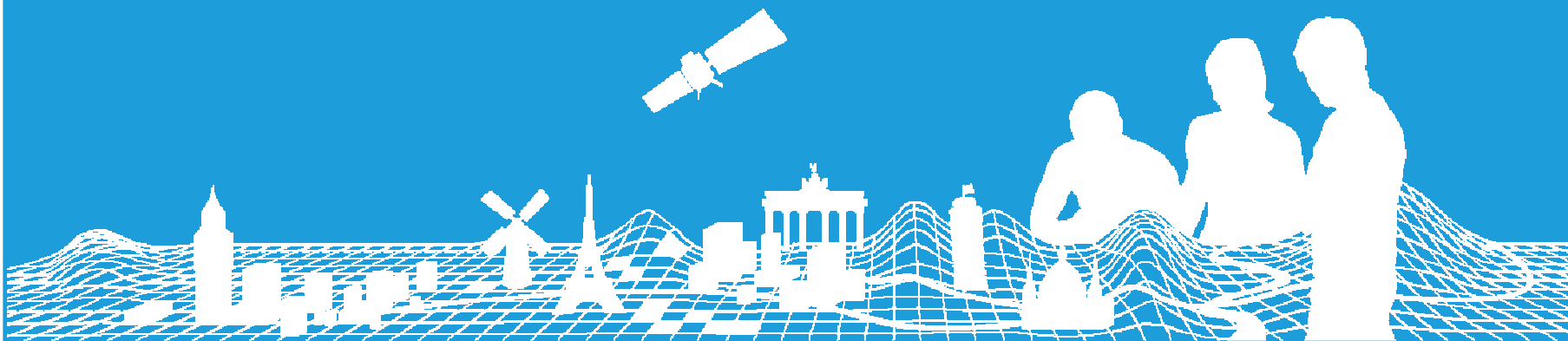


Plenary meeting of the Quality Knowledge Exchange Network News from Head Office



Dave Lovell, EuroGeographics Secretary General and Executive Director

22.01.15



EuroGeographics Membership

60 members
46 European countries

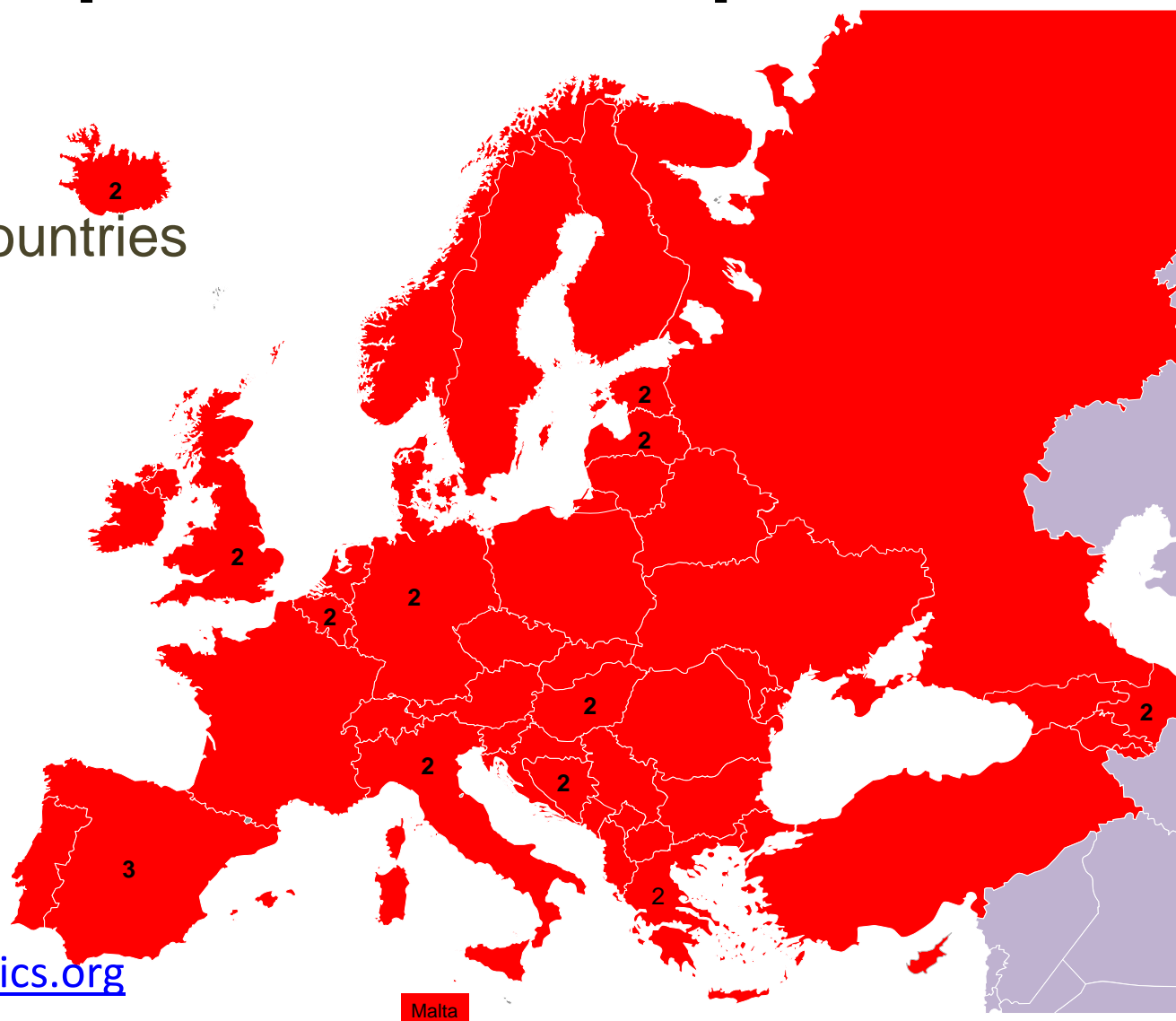
-  Full membership
-  Out of scope

Rue du Nord 76
Noordstraat 76
1000 Brussels
Belgium

www.eurogeographics.org



CONNECTING YOU TO THE
**AUTHORITATIVE GEO-INFORMATION
FRAMEWORK FOR EUROPE**



Membership Application - Turkey

- Ministry of Environment and Urban Planning General Directorate of **Land Registry and Cadastre** (TKGM) in **Turkey**.
- Existing member: Ministry of National Defence, General Command of Mapping – ‘we think that the membership would be very beneficialthe participation of LR & C will enrich our works in the framework of EuroGeographics significantly’. (8 Dec)



EuroGeographics Strategy



Strategic Objectives

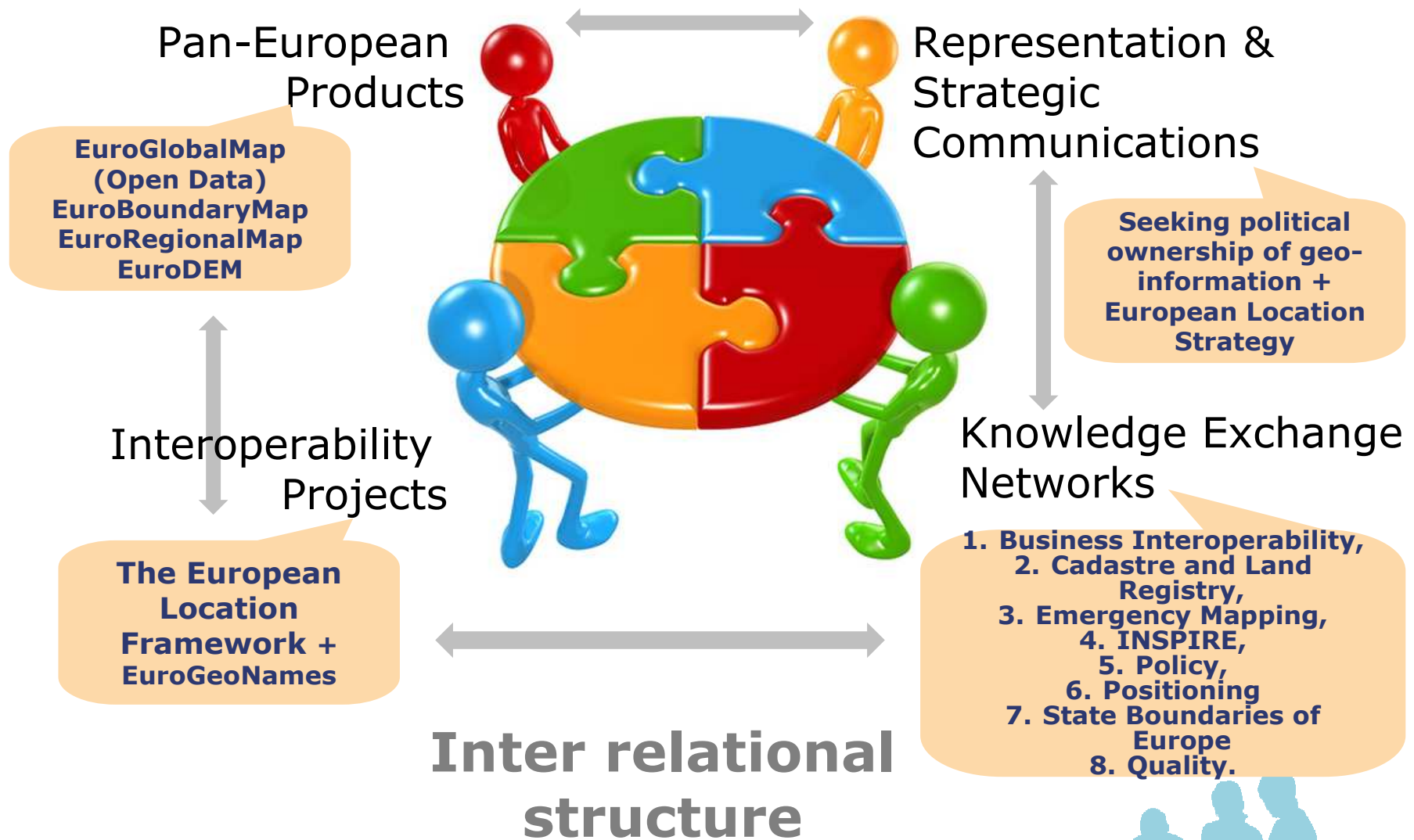
- 1) Provide the voice of our members
- 2) Develop the network of members
- 3) Deliver an operational ELF to support realisation of the ESDI
- 4) Facilitate access to members' data and expertise
- 5) Grow our network of members
- 6) Ensure that the association continues to develop its role and has a sustainable future

Our purpose is: *'to further the development of the European Spatial Data Infrastructure through collaboration in the area of geographic information, and the representation of the EuroGeographics' membership and its capabilities.'*

Our vision is of a European society which makes decisions informed by our members' accurate, authoritative and quality-assured land and geo-information data, services and expertise.

Our Mission is to maintain a network which helps each member to improve their competencies and role; to facilitate access to our members' data, services and expertise; and to provide a strong voice for our members.

EuroGeographics AISBL – Activities



The European Location Framework



Presentation to: Q-KEN

By: Dave Lovell

Date: 22.01.15

Commitment to the ELF

- **Articles of Association**
- **Medium Term Plan**
- **Strategy 2014 - 2020**
- **Annual Operating Plans**

Achieve interoperability of our Members' national land and geographic information, including the realization of a European Location Framework (ELF) to provide Europe and the EU with a valuable information asset to support its long term strategies;

Commitment to the ELF

- Articles of Association
- **Medium Term Plan**
- Strategy 2014 - 2020
- Annual Operating Plans

Key objectives for EuroGeographics are to:

- facilitate the process of providing European reference data and services based on our members data;

Commitment to the ELF

- Articles of Association
- Medium Term Plan
- **Strategy 2014 - 2020**
- Annual Operating Plans

Deliver an operational European Location Framework to support realisation of the European Spatial Data Infrastructure

Commitment to the ELF

- Articles of Association
- Medium Term Plan
- Strategy 2014 - 2020
- **Annual Operating Plans**

Develop the European Location Framework

The ELF vision

- The ELF White paper
- A geospatial reference infrastructure
 - ★ Interoperable data and services
 - ★ Full coverage of Europe
 - ★ Supporting international standards and INSPIRE
 - ★ Quality assured
 - ★ Management of national data



Implementation strategy for ELF

1. Successful completion of the ELF project
2. Acceptance by the NMCA's and EuroGeographics on the technical, legal and administrative output of the project as a basis for future services
3. Establishing organisational arrangements to deliver ELF services
4. A positive Business Case including sustainable financing to support the service



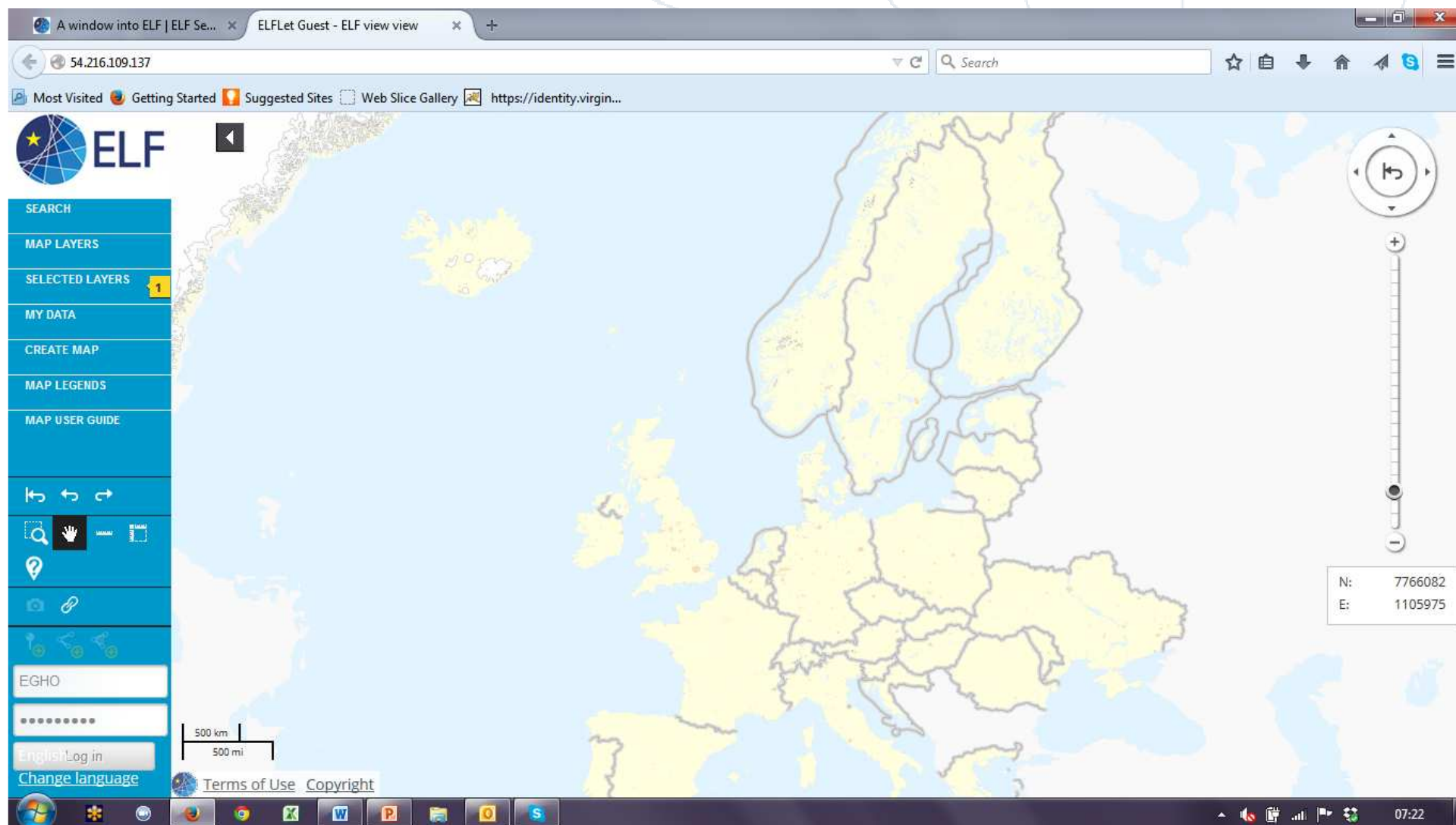
Your benefit from ELF

- **Helps you implement INSPIRE**
- **Provides Tools and Training**
- **Contributes to unavoidable costs**
- **Improves the QUALITY of your data and services;**
- **Opens your data and services to new markets**
- **Satisfies EC programme requirements e.g. Copernicus RDA and Eurostat's requirements**
- **Provides your contribution to UN-GGIM and the post 2015 Sustainable Development Agenda**

Product specification template – internal

Theme and scale	View (WMTS)	View & Enquire (WMS + GFI)	Feature Download (WFS)	Geocoding and search	Bulk download (ATOM)	Bulk (Offline) Delivery
Topographic map						
1:1m (EGM)	ELF Basemap		ELF (EGM)		ELF (EGM) ATOM	ELF (EGM)
1:250k (ERM)			ELF (ERM)		ELF (ERM) ATOM	ELF (ERM)
National			ELF (National Topo)			
Multi-scale						
Administrative Units						
1:100k (EBM)		ELF Administrative Units Map	ELF (EBM)		ELF (EBM) ATOM	ELF (EBM)
National		ELF Administrative Units Map	ELF Administrative Units	GeoLocator		
Multi-scale		ELF Administrative Units Map		GeoLocator		
Cadastral parcels; buildings; addresses						
National (Master LoD0)		ELF Cadastral Map	ELF Cadastral Parcels			
			ELF Buildings			
Individual themes (Master LoD1)						
Land Cover	ELF Land Cover Map*)		ELF Land Cover		Some NMCAs offer this as well, there is no plan currently to offer a combined ATOM feed	
Transport Networks	ELF Transport Network Map*)		ELF Transport Network			
Hydrography (Hydrology)	ELF Hydro Map*)		ELF Hydro			
Geographic names	ELF Geo Names Map*)		ELF Geo Names	GeoLocator		
Elevation (LoD1 + EuroDEM)	ELF Elevation Map*)		ELF Elevation (WCS)			ELF (EuroDEM)
Buildings	ELF Buildings Map*)		ELF Buildings			
Sea Regions	ELF Sea Regions Map*)		ELF Sea Regions			

*) For each there needs to be a separation between View and View and Enquire as to branding. We could use words like Plus, Premium etc.



The screenshot shows a web browser window displaying the ELF (European Location Framework) application. The browser's address bar shows the URL "54.216.109.137". The application interface includes a sidebar on the left with a search bar and several menu items: "SEARCH", "MAP LAYERS", "SELECTED LAYERS" (with a yellow badge showing "1"), "MY DATA", "CREATE MAP", "MAP LEGENDS", and "MAP USER GUIDE". Below these are navigation icons and a section for "EGHO" with a search bar and a "Log in" button. A "Change language" link is also present. The main area is a map of Europe with a yellow overlay. On the right side of the map, there is a compass and a vertical scale bar. A small box in the bottom right corner of the map area displays coordinates: "N: 7766082" and "E: 1105975". At the bottom of the application, there are links for "Terms of Use" and "Copyright". The Windows taskbar at the bottom of the screen shows various application icons and the system clock indicating "07:22".



Jani Koo
Sign Out

LOCATION SEARCH

MAP LAYERS

SELECTED LAYERS

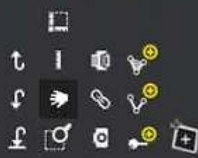
MY DATA

CREATE MAP

THEMATIC MAPS

LEGENDS

MAP USER GUIDE



Volume

Mute

Mute

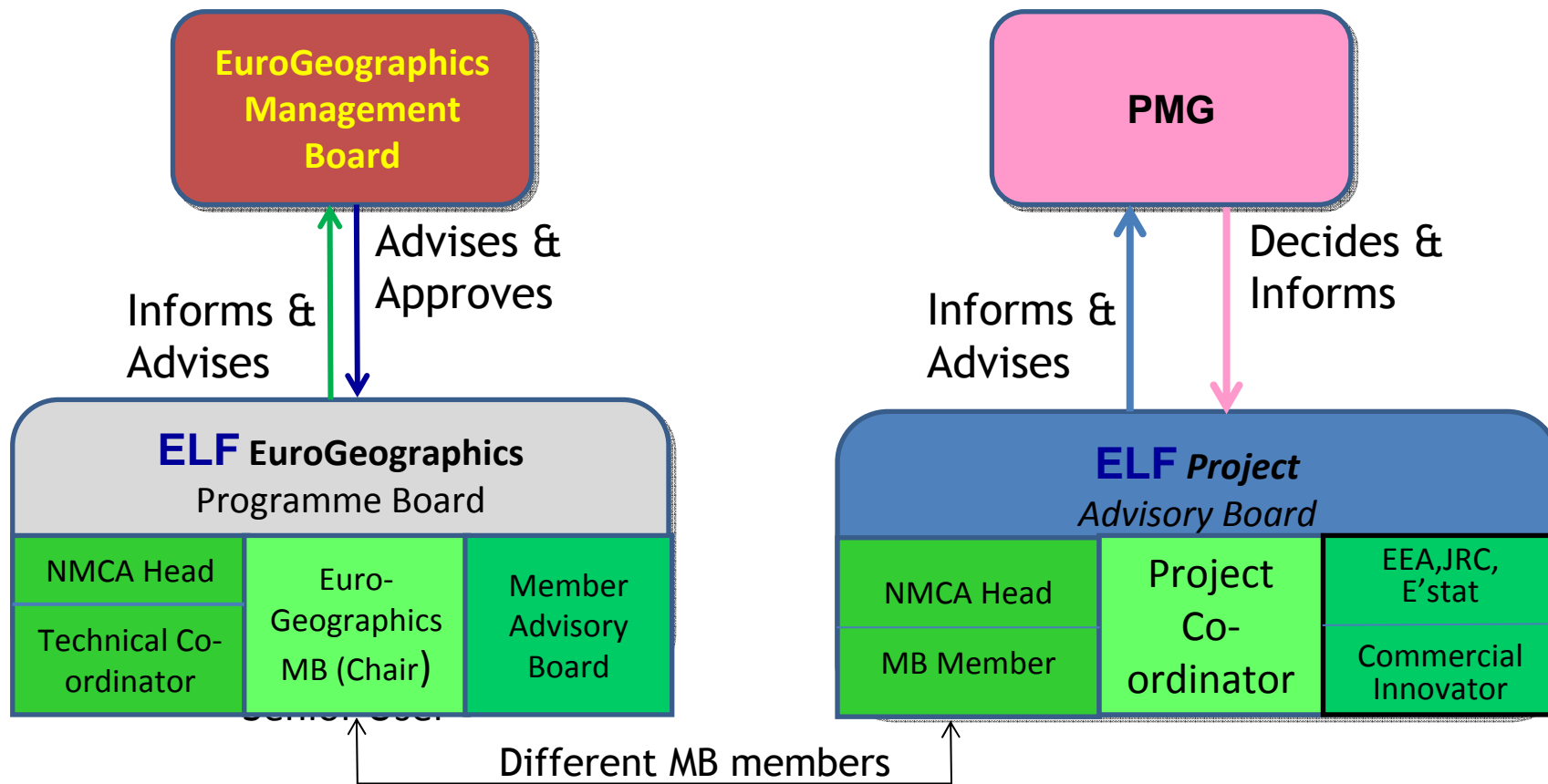
Terms of Use Data sources

Topographic... Orthoimage Background M...

the Competitiveness and Innovation Framework Programme (CIP)
ICT Policy Support Programme (PSP) Call 6

EUROPEAN LOCATION FRAMEWORK

EuroGeographics ELF Management Structure



A €13 million investment

- ★ A technical environment developed by leading NMCAs
- ★ Pricing and Licensing respecting national conditions prepared by NMCAs (if you charge for your data ELF charges for your data)
- ★ Hosting in a private NMCA Cloud
- ★ ELF Owned and Managed by EuroGeographics (EuroGeographics 'owned' and managed by you and for you)
- ★ ELF Service components provided by NMCAs (technical infrastructure, open-source platform, contract and licence management, sales marketing and customer support, etc)
- ★ Developed for you and by you to satisfy government, business and personal users and uses



UN-GGIM: EUROPE

UNITED NATIONS INITIATIVE ON
GLOBAL GEOSPATIAL
INFORMATION MANAGEMENT



Aim of UN-GGIM

To make accurate, reliable and authoritative
geospatial information readily available to support
sustainable development



UN-GGIM

United Nations Initiative on
Global Geospatial Information Management

Positioning geospatial information to address global challenges

ggim.un.org



UN-GGIM: Europe Executive Committee

Tomaz Petek, Peter ter Haar, Bengt Kjellson, Jacek Jarzabek, Antonio Arozarena, Andrei Tarnopolskiy
Dorine Burmanje, Hansjörg Kutterer, Kristian Møller, Ezio Bussoletti, Ass't to Mr Tarnopolskiy



UN-GGIM: EUROPE

UNITED NATIONS INITIATIVE ON
GLOBAL GEOSPATIAL
INFORMATION MANAGEMENT



Baseline for a Work Plan, content

- **Work Group A, Core Data:** Increasing data interoperability and harmonisation by proposing core geospatial data which meets essential user needs
- **Work Group B, Data Integration:** Enabling integration of core geospatial data with statistical and other data in order to foster further usage



UN-GGIM: EUROPE

UNITED NATIONS INITIATIVE ON
GLOBAL GEOSPATIAL
INFORMATION MANAGEMENT



UN-GGIM: Europe Secretariat

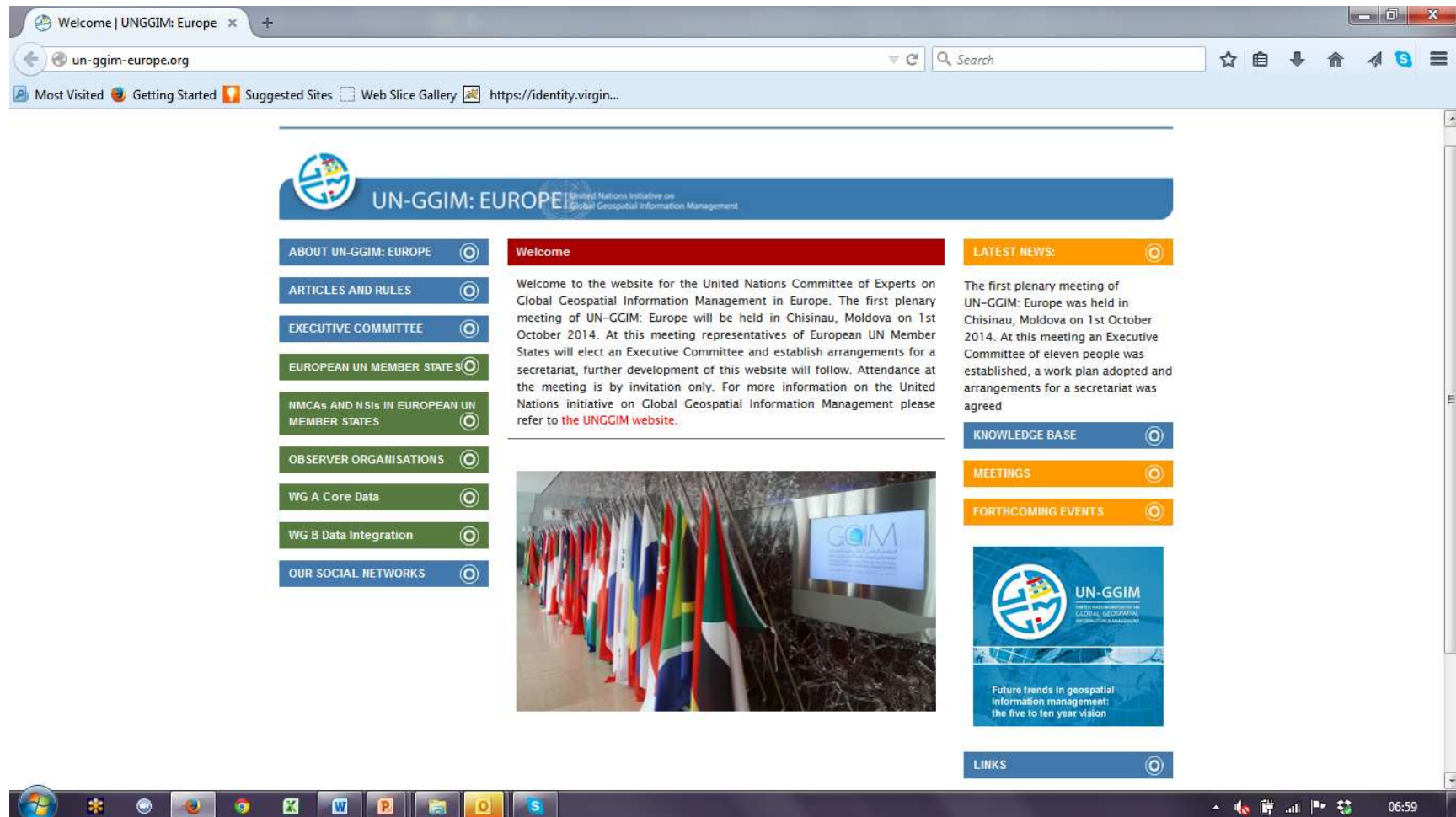


UN-GGIM: EUROPE

UNITED NATIONS INITIATIVE ON
GLOBAL GEOSPATIAL
INFORMATION MANAGEMENT



More information



<http://un-ggim-europe.org/>



UN-GGIM: EUROPE
UNITED NATIONS INITIATIVE ON
GLOBAL GEOSPATIAL
INFORMATION MANAGEMENT



WELCOME DAVE LOVELL

Representation

Current Policy Topics
European Affairs and
Representation Strategy
(EARS)
Policy Briefing Documents
UN-GGIM

Knowledge Exchange

Business Interoperability
Cadastre and Land Registry
Emergency Mapping
INSPIRE
Policy
Quality
PosKEN (Positioning)
State Boundaries of
Europe(SBE) KEN

Products & Services

Coordinate Reference
Systems (EU)
EuroBoundaryMap
EuroDEM (Digital Elevation
Model)
EuroGlobalMap
EuroRegionalMap

Communications

Articles in professional
journals
Members' eNewsletter
Presentations
Press Releases
Subscribe to our RSS feed
Website Helpdesk
YouTube Video Channel

Projects

ESDIN
EuroGeoNames
European Location
Framework

Association Governance

Articles and Rules &
Regulations
General Assemblies
Management Board
Medium Term Plan
Members
2014 Operating Plan
Strategy

EuroGeographics Exchange

Current Requests from

Management Teams

Product and Services
Coordination Group

Strategic partners

European Land Registry
Association

Latest news

8
JAN

[New Year, new
opportunities](#)

19
DEC

[Job offer for
Secretary General
and Executive
Director](#)

19
DEC

[EuroGeographics
Season's
Greetings](#)

[More latest
news](#)

Events

27
JAN

[ELF
Transportation
pilot meeting](#)

28
JAN

[ELF WP3 meeting](#)

2
FEB

[BIKEN webinar on
Open Data](#)

[More events](#)

Communications

- Articles in professional journals
- Members' eNewsletter
- Presentations
- Press Releases
- Subscribe to our RSS feed
- Website Helpdesk
- YouTube Video Channel

Projects

- ESDIN
- EuroGeoNames
- European Location Framework

Association Governance

- Articles and Rules & Regulations
- General Assemblies
- Management Board
- Medium Term Plan
- Members
- 2014 Operating Plan
- Strategy

Events

- 27 JAN** [ELF Transportation pilot meeting](#)
- 28 JAN** [ELF WP3 meeting](#)
- 2 FEB** [BIKEN webinar on Open Data](#)
- [More events](#)

EuroGeographics Exchange

- Current Requests from Members
- Current Offers from Members
- Members Consultancy Services

Management Teams

- Product and Services Co-ordination Group

Strategic partners

- European Land Registry Association
- EuroSDR
- European Environment Agency
- Open Geospatial Consortium (OGC)
- Permanent Committee on Cadastre in the European Union



project management groups (via BaseCamp)




View the events calendar



ELF EUROPEAN LOCATION FRAMEWORK



Members' Products & Services



EuroGeographics messenger



UN-GGIM EUROPE





Always useful to know

Membership of EuroGeographics:

- Helps you deliver your national, European and International obligations;
- Helps you deliver your national, European and International obligations;
- Saves you money;
- Protects your interests;
- Presents your contributions;
- Gives access to world experts;
- Advances personal and organisational knowledge and expertise;
- Delivers software solutions and other tools;
- Supports implementation of INSPIRE;
- Grows your business.



EuroGeographics

Working with you and for you
Bigger and Stronger
Recognised and Respected
Delivering Programmes and Products
Interesting past, Exciting Future!



CONNECTING YOU TO THE
**AUTHORITATIVE GEO-INFORMATION
FRAMEWORK FOR EUROPE**





**EuroGeographics
working with
members and
working with
others**

**Because together
we are stronger
and smarter,
more efficient
and more
effective.**

Thank you!

**Together,
we benefit
from each
other**

EuroGeographics

CONNECTING YOU TO THE
**AUTHORITATIVE GEO-INFORMATION
FRAMEWORK FOR EUROPE**



EuroGeographics

www.eurogeographics.org



ELF EUROPEAN
LOCATION
FRAMEWORK

<http://www.elfproject.eu/>



CONNECTING YOU TO THE
**AUTHORITATIVE GEO-INFORMATION
FRAMEWORK FOR EUROPE**

