

FIG and FIG Commission 7

Topics of interest

G. Schennach, Austria

Chair FIG Commission 7 Cadastre & Land Management

What is FIG?



International Federation of Surveyors
Fédération Internationale des Géomètres

International Vereinigung der Vermessungsingenieure

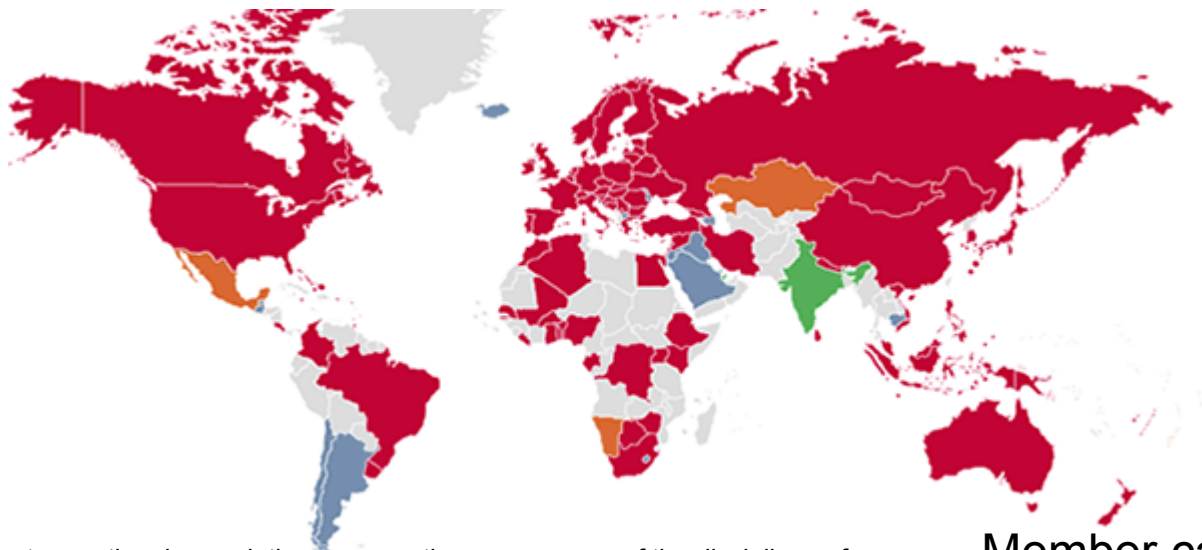
- Established in 1878 in Paris by 7 member associations (Belgium, France, Germany, Italy, Spain, Switzerland and UK)
- Federation of national associations
- Only international body representing all surveying disciplines
- UN-recognised non-governmental organisation (NGO)

The FIG vision

A modern and sustainable surveying profession in support of society, environment and economy by providing innovative, reliable and best practice solutions to our rapidly changing and complex world, acting with integrity and confidence about the usefulness of surveying, and translating these words into action.

Members

- 115 countries represented in 2016 – more than 300,000 individuals

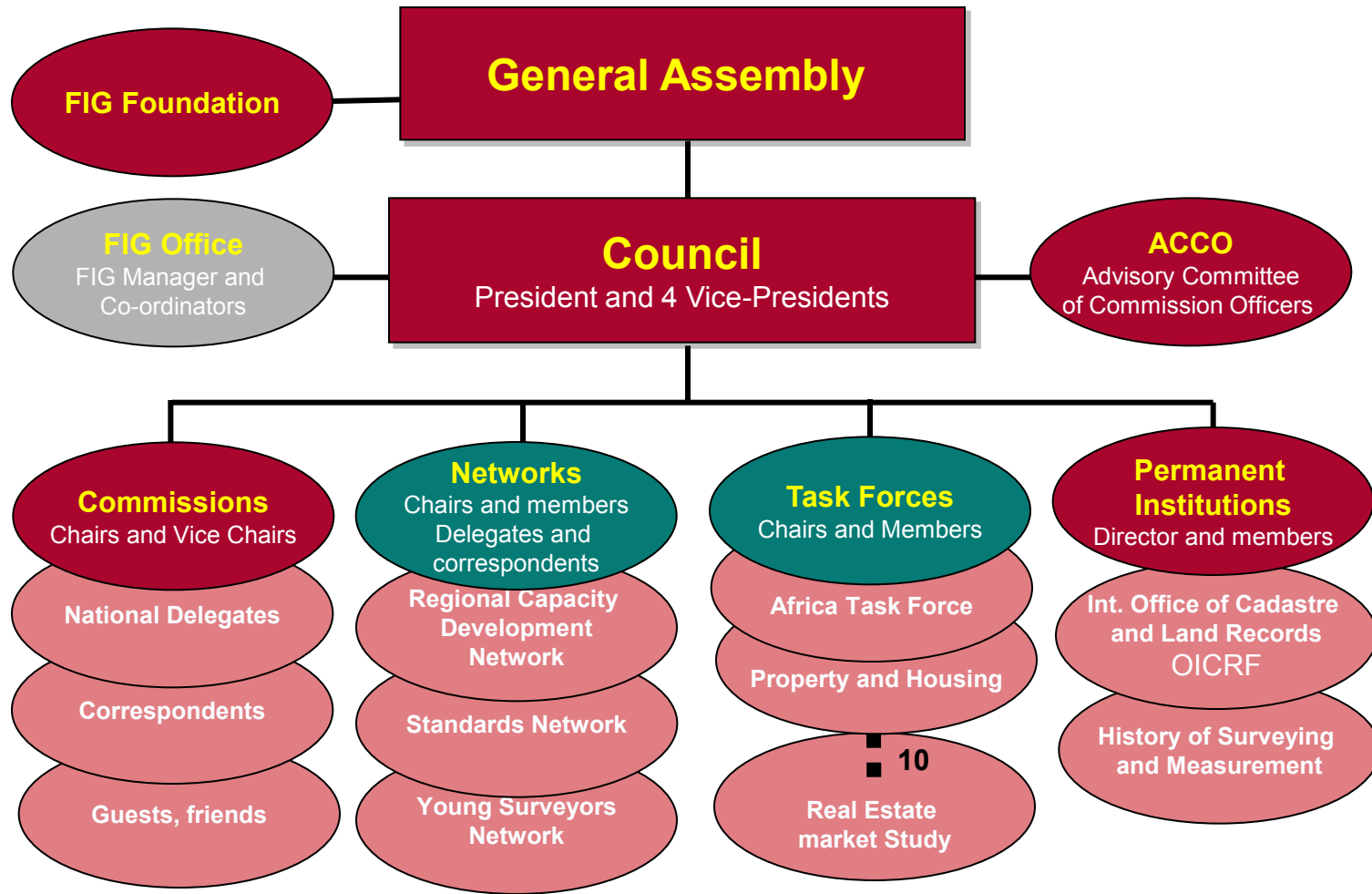


Full membership is open to a national association representing one or more of the disciplines of surveying (following FIG definition of a surveyor) and whose members possess relevant academic qualifications (which should normally be equivalent to at least UNESCO International Standard Classification of Education (ISCED) level 5 degrees) plus approved professional experience; and who provide professional services in accordance with ethical standards.

Associations which include technician grades of membership are also eligible for membership of the Federation.

Member categories

- National associations, 105 from 91 countries
- Academic members, 93 from 55 countries
- Affiliates, 49 from 46 countries
- Corporate members, 24
- Correspondents, 2



The Council



From left: Vice President Prof. Dr. **Rudolf Staiger** (Germany), Vice President **Mikael Lilje** (Sweden),
President Dr. Chryssy Potsiou (Greece),
Vice President **Orhan Ercan** (Turkey) and Vice President **Diane Dumashie** (United Kingdom)

ACCO Representative in the Council
Gerda Schennach (2017-2018), Austria

International Cooperation

World Bank Group

United Nations Human Settlement Program (**UN-Habitat**)
Food and Agriculture Organization of the United Nations (**FAO**)
United Nations Global Geospatial Information Management (**UN GGIM**)
United Nations Office for Outer Space Affairs (**UNOOSA**)

United Nations Economic Commission for Europe (**UNECE**)
United Nations Economic Commission for Africa (**UNECA**)

United Nations Department of Economic and Social Affairs (**UN DESA**)
United Nations Conference on the Standardization of Geographic Names
United Nations Regional Cartographic Conferences (**UNRCC**)

*Global Land Tool Network (**GLTN**) (UN-Habitat)*
*International Organization for Standardization (**ISO**)*

The Commissions

1. Professional Standards and Practice
2. Professional Education
3. Spatial Information Management
4. Hydrography
5. Positioning and Measurement
6. Engineering Surveys
7. Cadastre and Land Management
8. Spatial Planning and Development
9. Valuation and the Management of Real Estate
10. Construction Economics and Management

Commission 7

Cadastral and Land Management

The Mission

- To provide a forum for **enhancing and exchanging knowledge** about cadastre, land administration and land management world wide
- To encourage the development of **pro poor land management** and land administration
- To promote the importance of development of **sustainable land administration** as infrastructure for sustainable development to underpin economic growth
- To promote the application of **innovative and advanced technology** in cadastre and land administration
- To promote awareness of the **role of surveyors** in land administration matters to the public and among stake holders.

Structure

Chair

G. Schennach (AT)

V-Chair for communications, social media, web

Hyunsook LEE (KR)

WG 7.1

**Fit-For-Purpose
LA**

Ch. Lemmen (NL)

WG 7.2

**LM in
CC and PP
Disaster areas**

D. Páez (CO)

WG 7.3

**Crowdsourcing
of Land Rights**

R. McLaren (UK)

WG 7.4

**Citizen
Cadastre**

G. Iván (HU)

Joint WG C3/C7 3D Cadastre *P. Van Oosterom (C3)*

Cadastral Template 2.0 *D. Steudler (CH) A. Rajaribifard (AU)*

Key issues of Workplan 2015-2018

- providing **visions** for future cadastre and land management
- taking the role as a mastermind in **developing effective land management**
- thinking about **new models** of land administration for sustainable development
- initiating professional discussions on **new business models** as required by a changing society
- **securing** land tenure and advocating **citizens' rights** but at the same time,
- staying **pragmatic** about what is feasible in cultural and social diversity and how commitment among stakeholders can be created for the benefit of the society and for the reputation of the profession in providing
- sustainability and advocacy to **citizens, land owners and stakeholders**

Areas of focus in 2016/2017

- address more regional topics - delegates/associations to get **actively** involved
- implementing **new technologies** into the agenda of Commission 7
 - *Fit-for-Purpose models for implementing cadastre more effectively*
 - *Internet of things / Crowdsourcing / Big Data in Cadastre*
 - *involvement of citizen / towards Cadastre 4.0*
 - *security of data and systems / economical sustainability*
 - *Land information as tool for pre- and post-disaster management*
 - *land registration as tool for creating real estate markets and value*
 - *qualification of professionals and training of stakeholders as partners*
 - *links to related professions (GI, IT, finance)*
- Results of Break-out sessions on „Internat.curriculum on responsible land“
- Work on development of outline/tools in cooperation with partners

Cadastral Template 2.0

A Worldwide Comparison of Cadastral Systems

Established under UN mandate by [Resolution 4 of the 16th UNRCC-AP](#) in Okinawa/Japan in July 2003.

UN endorsement for cooperation with [UN-ECE WPLA](#), [UN-ECA CODI](#) and [PCIDEA](#).

The "Cadastral Template 2.0" has been developed by a research group at the Centre for SDIs and Land administration, Department of Infrastructure Engineering of the University of Melbourne (Prof. Abbas Rajabifard, **Dr. Daniel Steudler**, and Prof. Ian Williamson, supported by Prof. Stig Enemark from Aalborg University, Denmark)

The cadastral template is based on a raster of 17 data fields, which would need to be filled in according to its specific description.

For filling in and updating country information, a **username** and **password** is required. Only one username and password is given out per country.

The most exciting option is to compare the different systems and indicators for regions and countries!

visit www.cadastraltemplate.org

Cadastral Template 2.0



Participating countries in **Europe**

Austria; Belarus; Belgium; Bulgaria; Cyprus; Czech Republic; Denmark; Finland; Germany; Hungary; Iceland; Latvia; Lithuania; Netherlands; Norway; Poland; Slovenia; Sweden; Switzerland; UK

example <http://www.cadastraltemplate.org/austria.php>

FIG WW 2017 Helsinki/Finland – Presentations

29 May - 2 June 2017, Helsinki, Finland

Surveying the world of tomorrow – From digitalisation to augmented reality

Submit your abstract online at www.fig.net/fig2017

Deadline 15 November 2016.

Topics for Commission 7 Technical Sessions / Presentations

- ❖ Integrating **new technologies** in land administration and cadastre
- ❖ **Modern communication** in land administration systems
- ❖ **Land policy and reform** to support sustainable use of land
- ❖ **Pro poor land management** and its role in public administration
- ❖ Land management for **state and public land**
- ❖ **Multi-dimensional cadastre**
- ❖ Land rights reflecting **societies' needs**
- ❖ Land administration in **pre- and post-conflict** and post **disaster** areas

**Land Consolidation and Readjustment for Sustainable Development -
Designing Resilient Landscapes and Empowering Communities**

9-11 November 2016, Apeldoorn/The Netherlands

Co-organised by FIG Com 7 / Com 8 / Dutch Kadaster / FAO

www.lcsymposium.nl

FIG Working Week 2017

May 29–2 June 2017, Helsinki/Finland

<http://www.fig.net/fig2017>

FIG Commission 7 (Commission 9) Internat. Seminar 2017

late September 2017, venue tbd/Romania

topics: land registration/real estate markets/valuation

FIG Commission 7 Annual Meeting 2017 and Internat. Conference

late November 2017, Cartagena/Colombia

Ibero-American countries, topics tbd