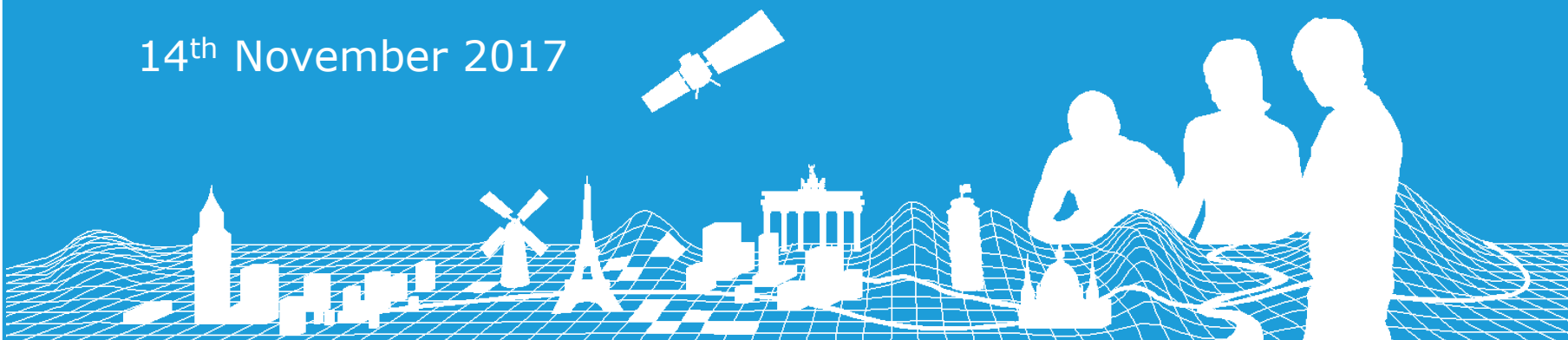


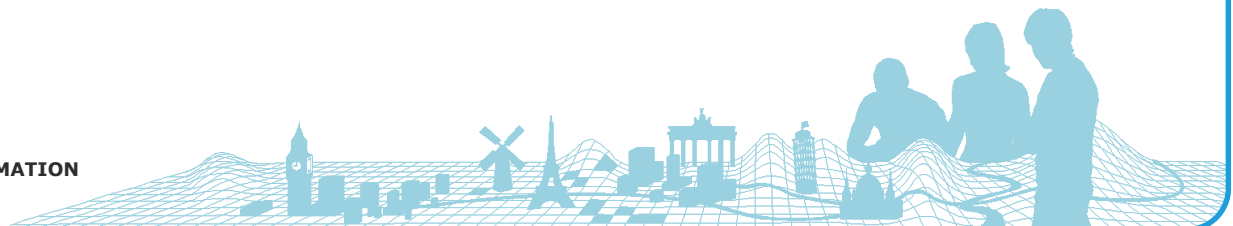
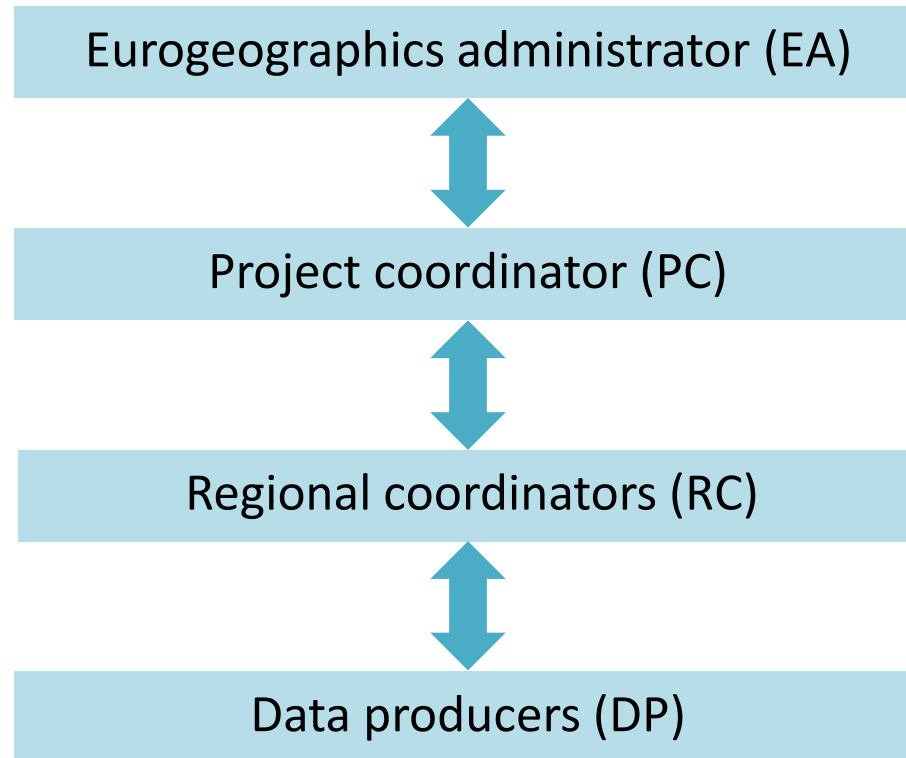
Perspective of a new ERM Regional Coordinator

Dovilė Rusonytė (AGI), Group C coordinator

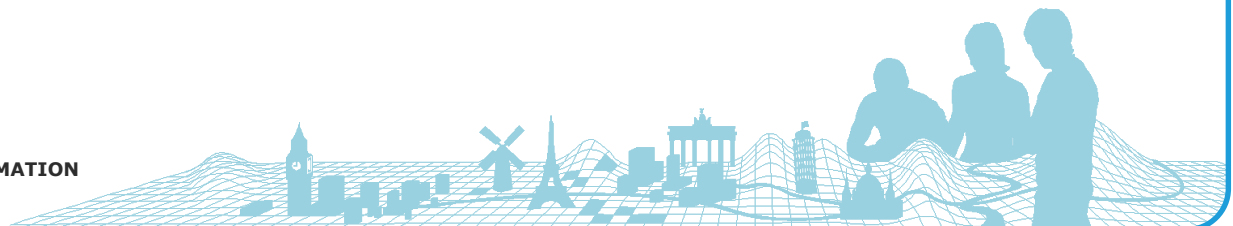
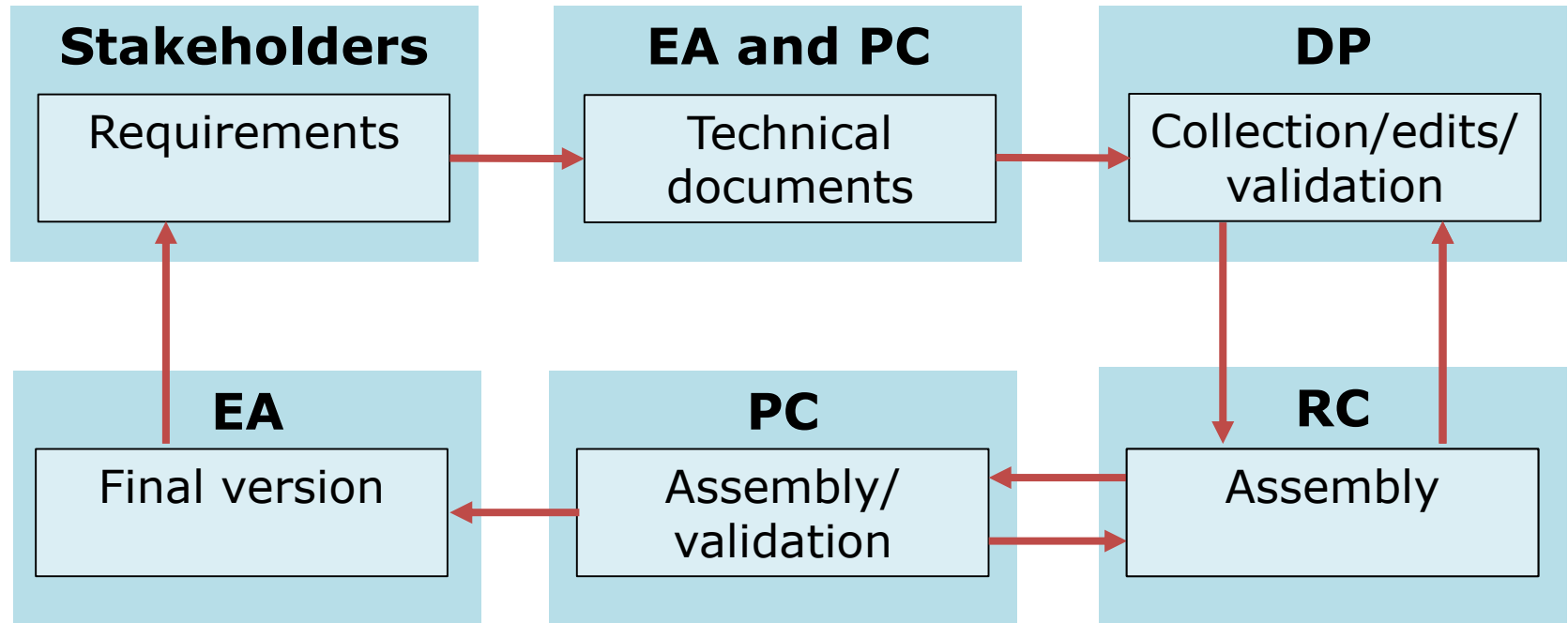
14th November 2017



Organizational Structure



Project workflow

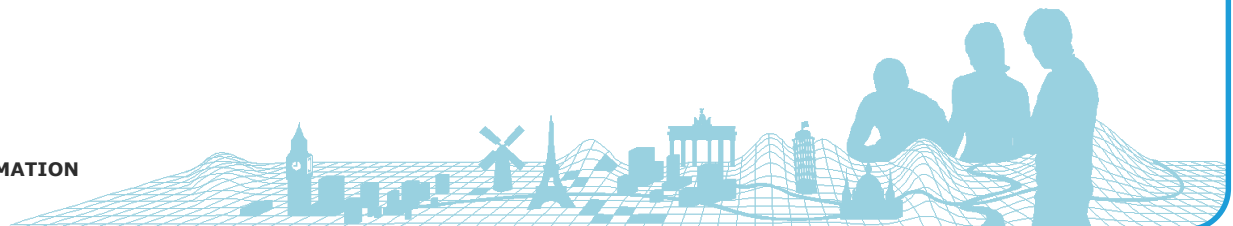
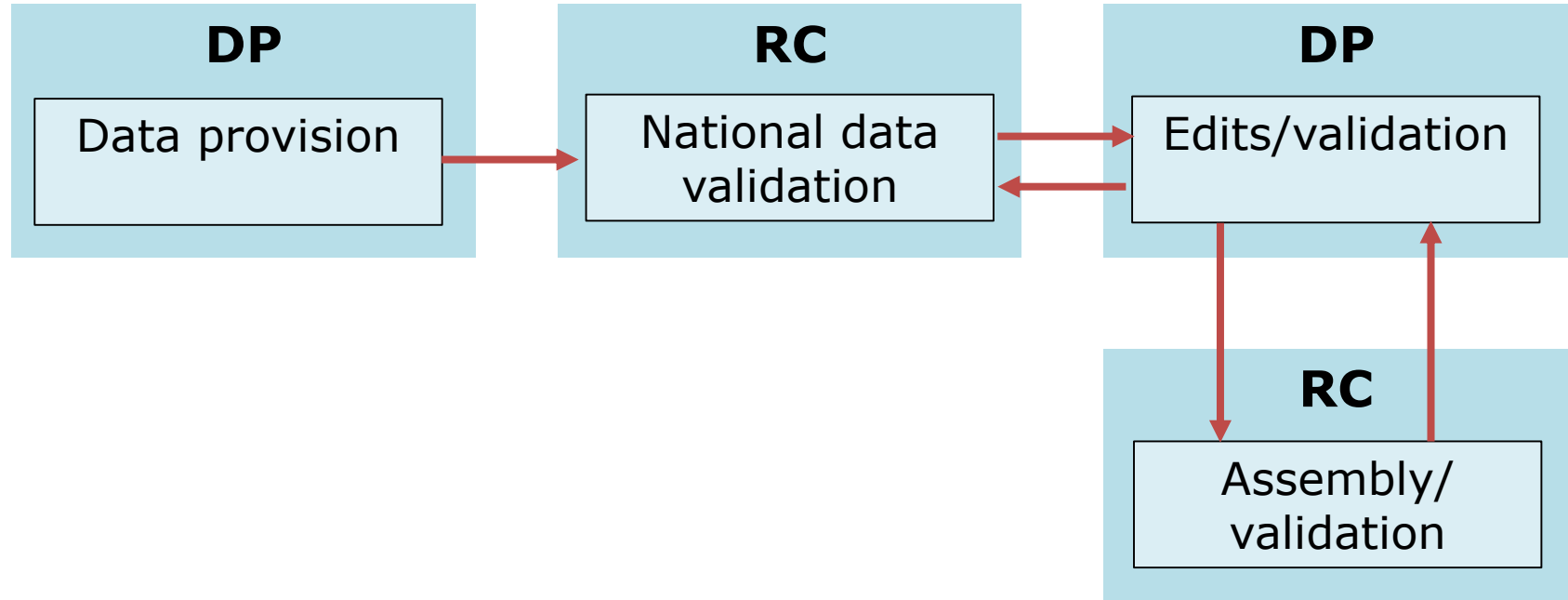


Documentation

- Technical documentation
 - *Product version number*
 - *Unified location for storage – Production Management System*
- Validation reports
 - *Requirements marked in different colours*
 - *Tools/phase provided as comments*
- Production Management System
 - *More and more functionality*



Validation/assembly workflow

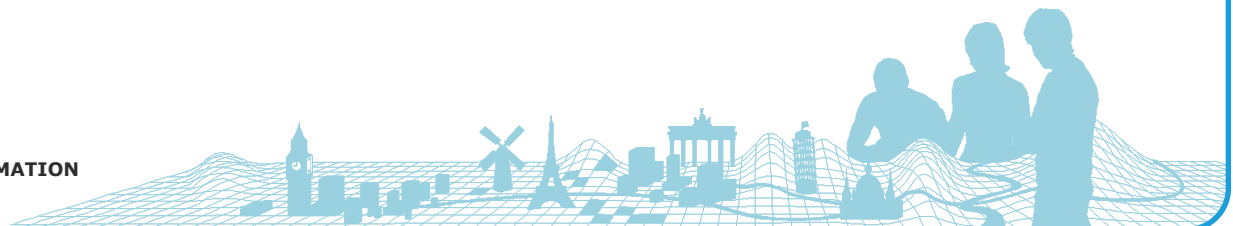


Data provision – how?

Different channels

- *FTP (nice folder structure)*
- *Email*

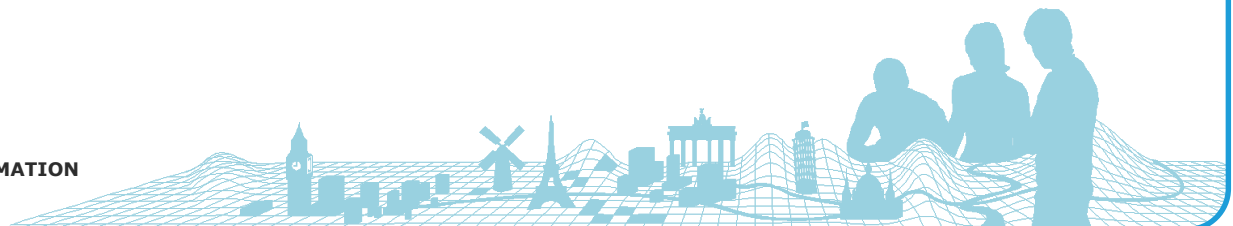
PMT should define clear guidance for how data should be provided



Data provision – what?

- A couple of databases with different names (theme, date)
- Extra feature classes included in database (topology, intermediate fc)
- Missing or empty other theme fc

PMT should define clear guidance for what has to be provided.



Validation – tools

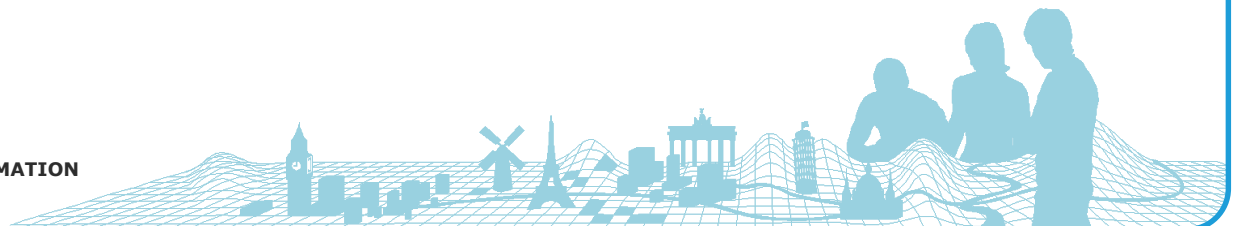
- A bunch of different kind of tools
 - Data reviewer
 - Topology rules
 - Scripts
 - FME
- Different outcome formats
 - Tables
 - Feature classes
 - Txt files

One click tool – panacea.



Validation – process

- Long process for some certain criterias
 - Pseudo nodes
 - Overlap/slivers
- Iterative process



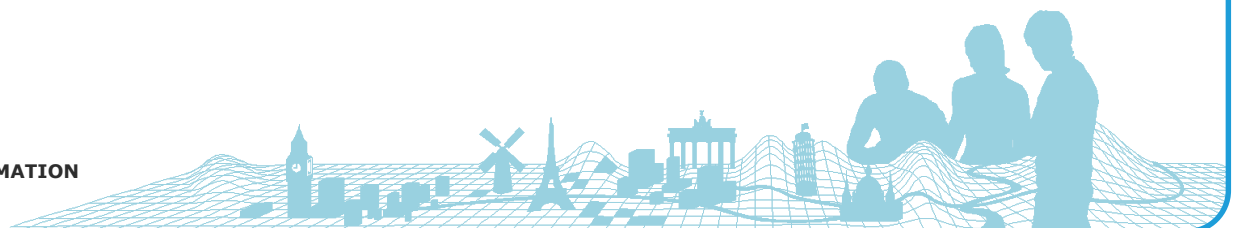
Validation – outcome interpretation

- Matching outcome with validation report criteria
- Validation report filling



Assembly

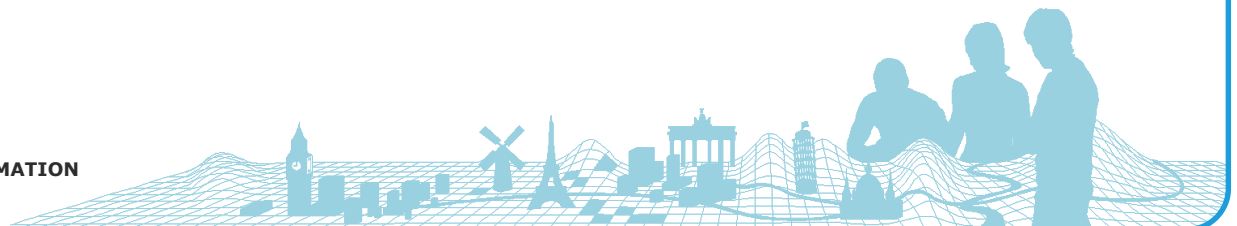
- Edge matching
 - PC email
 - Changing boundary features
 - Webinar in February 2018



Questions/Feedback

- Different channels
 - Emails
 - Webinars
 - Validation report comments
 - Break-out session

PMS forum?



Thank you for your attention

