



REPUBLIC OF ESTONIA  
LAND BOARD

# Open data & crowd sourcing

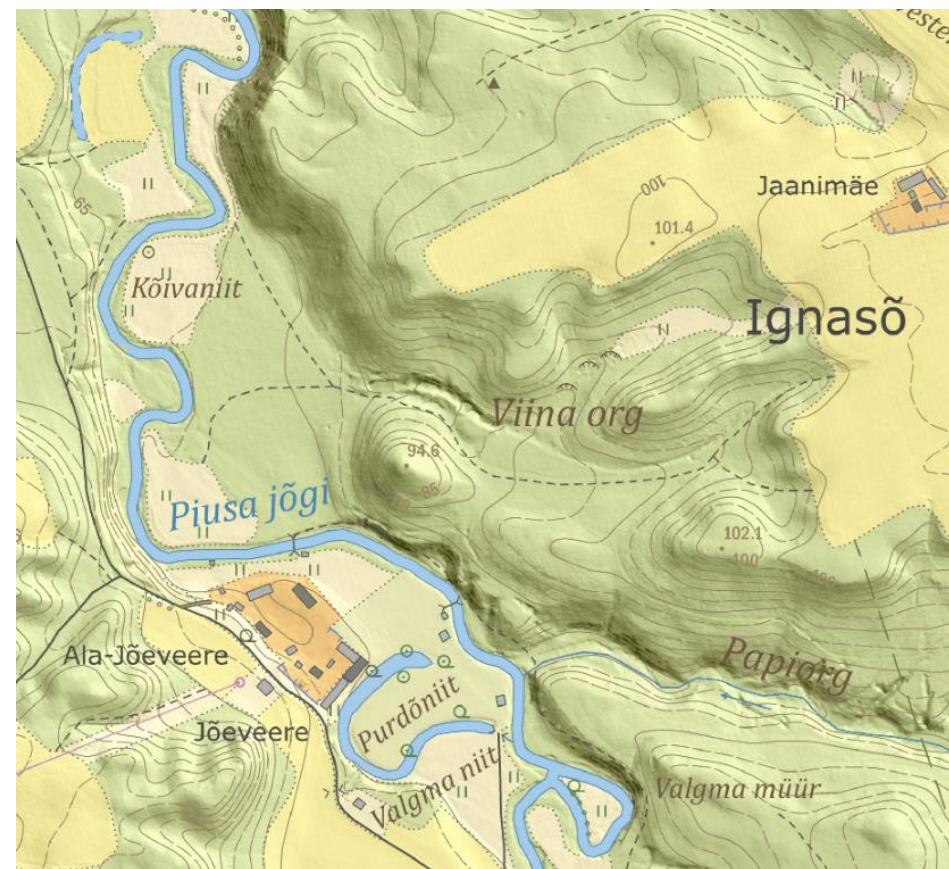
Tambet Tiits

October 07, 2019



- ❖ All data has been available to public via free view services since 2001.
- ❖ Some of the data has always been open data: addresses, place names, administrative boundaries.
- ❖ **Since 01.07.2018, all other core spatial data is open & free** incl. topographic database, imagery, ALS, cadastral data.
- ❖ 15 month download statistics : 1,4 million files / 24 TB, 5000 unique IP users.

## Land Board's Open Data



<https://geoportaal.maaamet.ee/opendata>



## *Improving data quality*

### **Topographic database integration to cadastre**

- ❖ From 01.01.2019, every parcel's land cover in cadastre was recalculated using the topographic database information
- ❖ Additionally, cadastral boundaries are being linked to topographic objects (e.g. shorelines) to take over the changes.
- ❖ A notation about parcel's geometrical quality was entered in the cadastral data
- ❖ All that triggered a lot of feedback from the land owners.

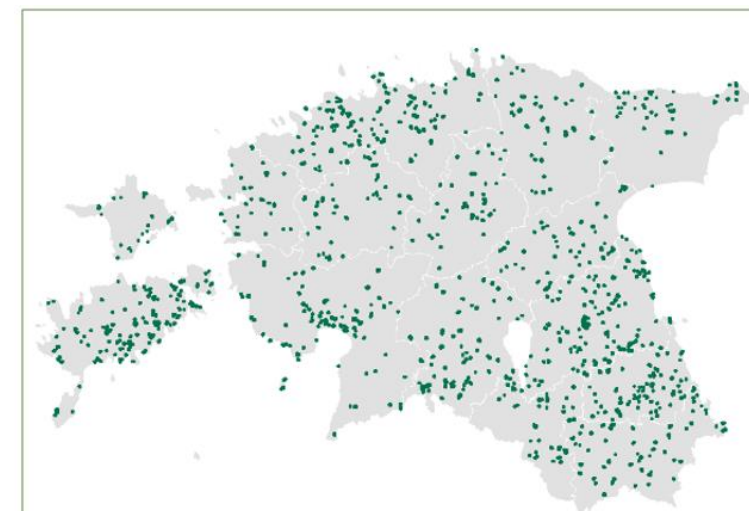
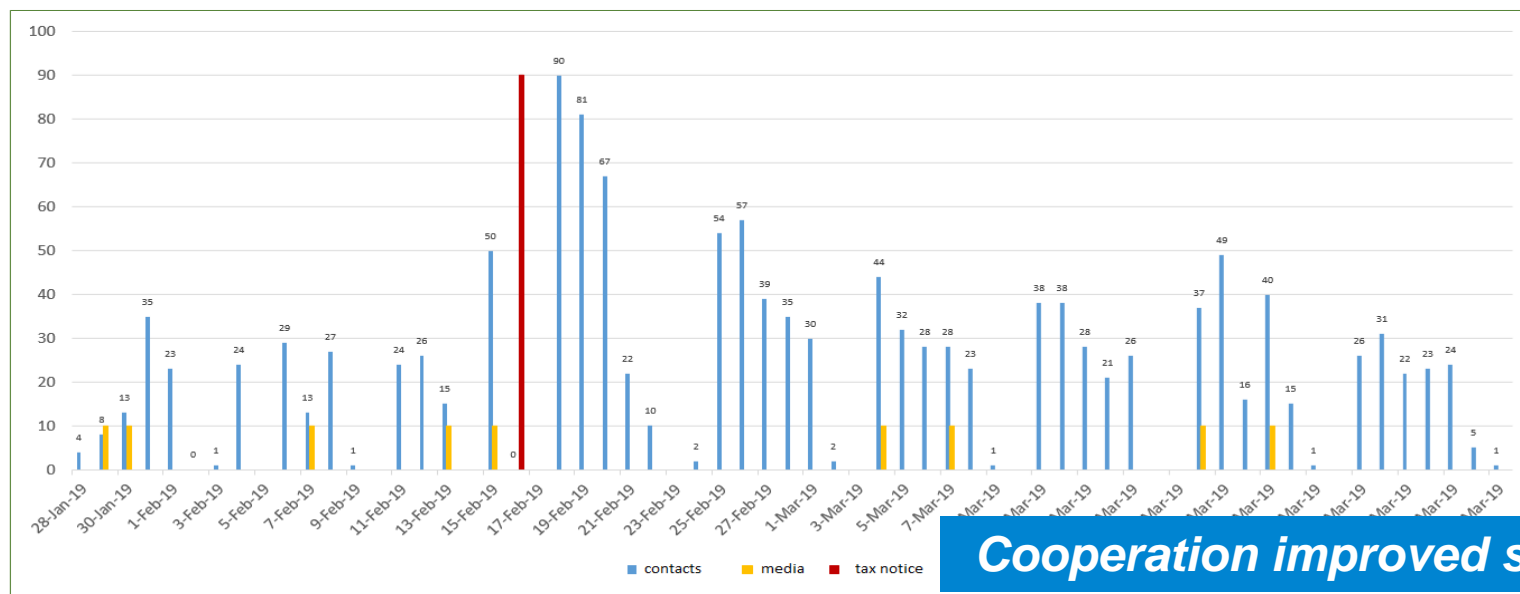


*Verification of topographic data using stereo  
photogrammetry*



# Crowdsourcing Effect

- ❖ Recalculated land cover changed in some cases the value of the property, which serves as basis for land tax.
- ❖ Land owners feedback on cadastral data necessitated updating of topographic data as fast as possible before tax notices were issued.
- ❖ We were contacted by owners on more than 10 000 occasions during a three-month period, and in 1500 cases the update of topographic data was appropriate.



**Cooperation improved spatial data quality in both databases**



REPUBLIC OF ESTONIA  
LAND BOARD

Thank you!

Tambet.Tiits@maaamet.ee