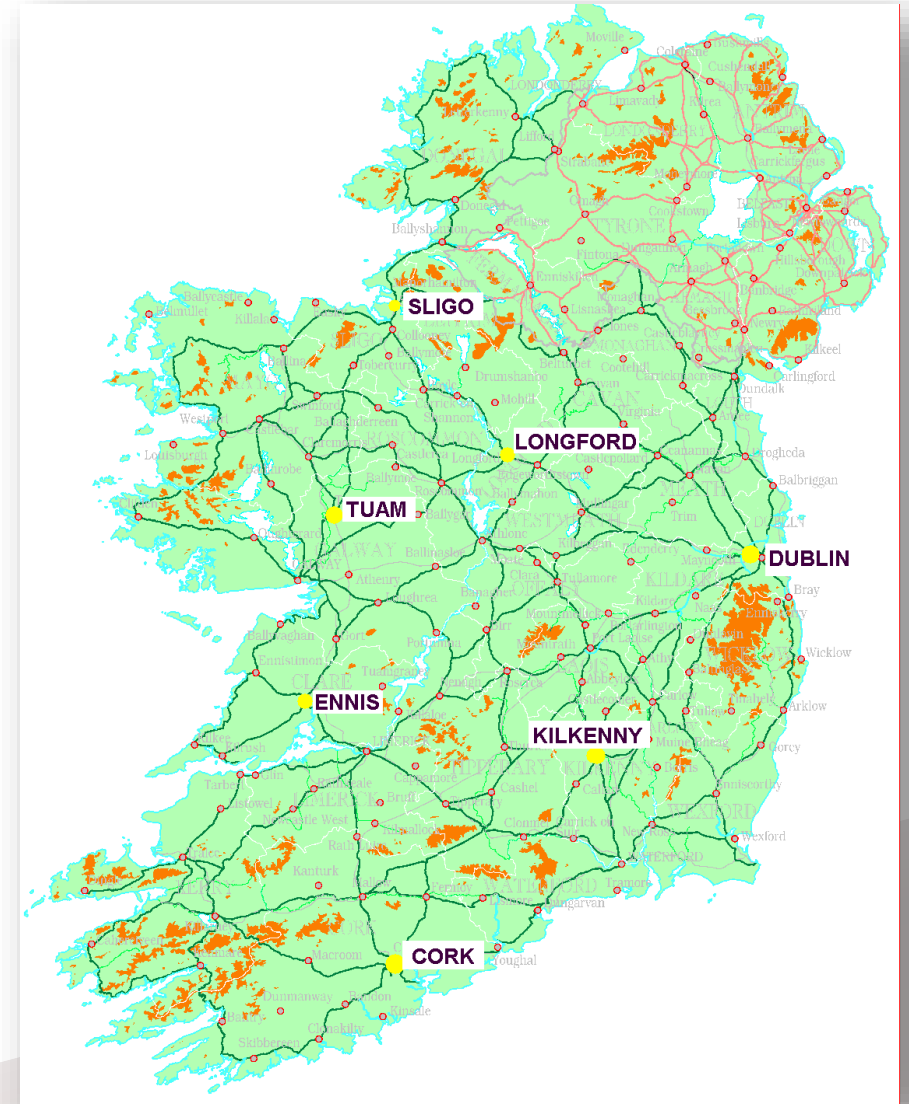


Ordnance Survey Ireland

- › Established in 1824
- › State Body since 2002, under the *OSi Act 2001*
- › Mandate: “To provide a national mapping service in the State... creating and maintaining the definitive national mapping and related geographic records”
- › Under the Dept. Housing, Planning and Local Government
- › 230 staff (30% reduction since 2008)
- › Head Office in Dublin, 6 regional offices
- › Government policy to merge OSi with the Valuation Office, Property Registration Authority to form Tailte Éireann



Our world has changed

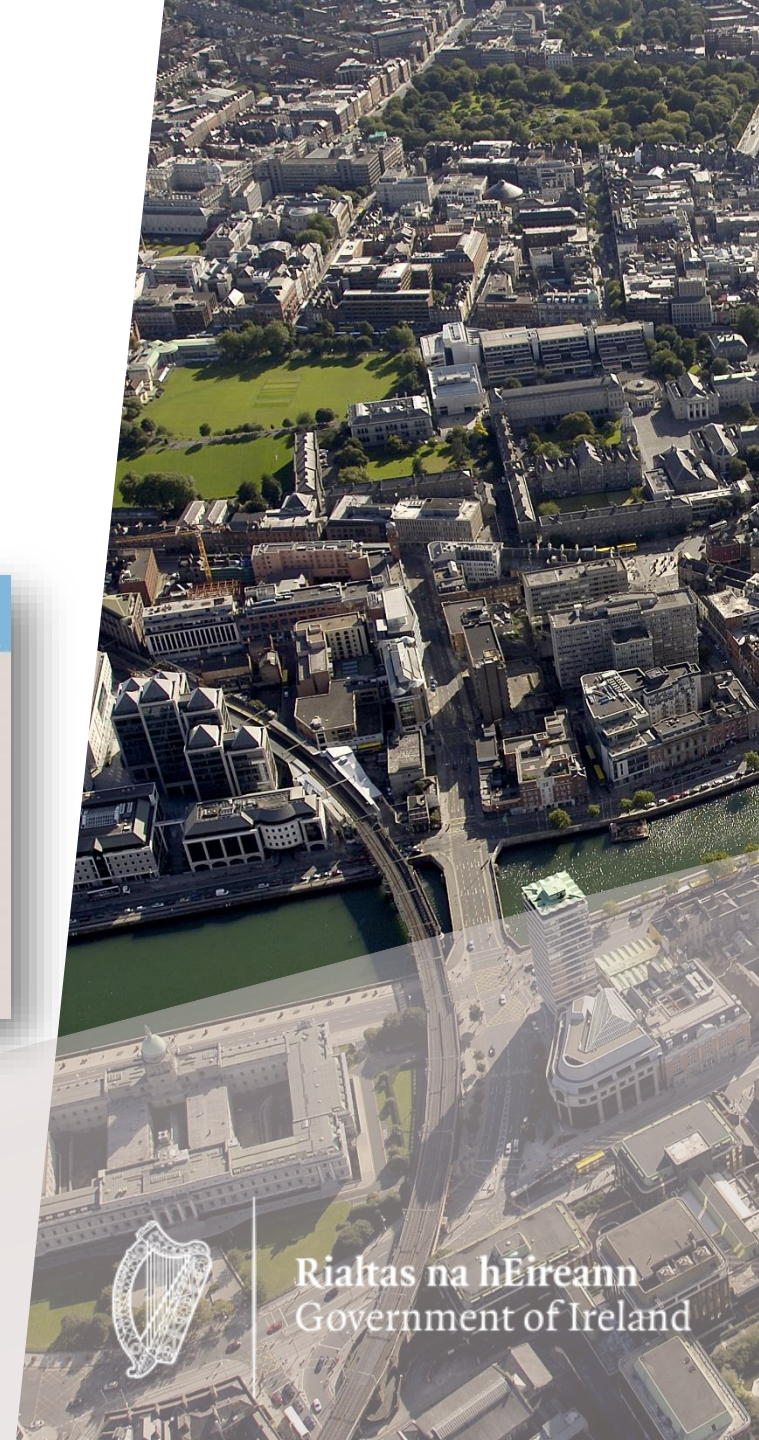


Enabling a digital economy
requires effective use of location data
for evidence based decision making
(everything happens somewhere)

Building smart societies
requires smart national data
infrastructure – NDI
(moving beyond the map)

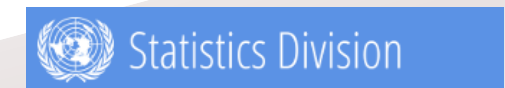


› This requirement smart government collaboration



Collaborating to develop a State Data Infrastructure

- › The integration of authoritative geography and authoritative statistics
- › Relationship changed from supplier/user to a strategic partnership (MOU)
- › Importance of playing to our strengths

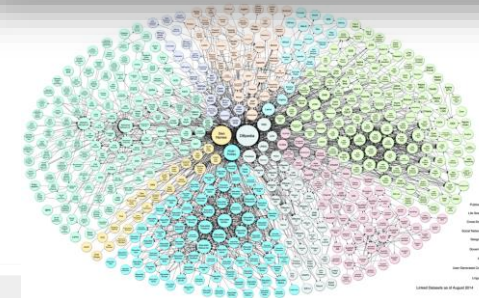
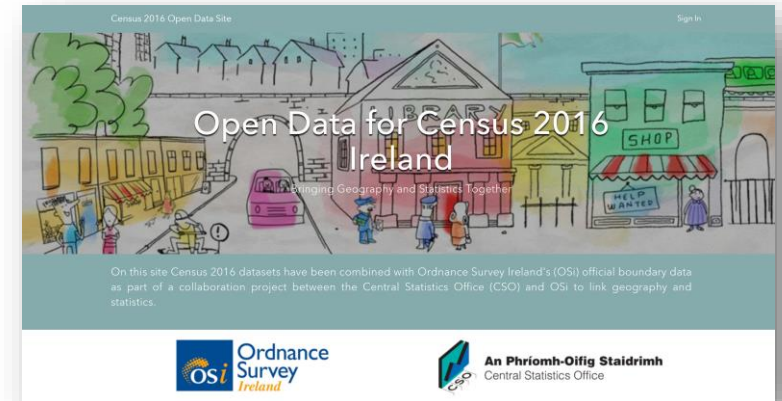
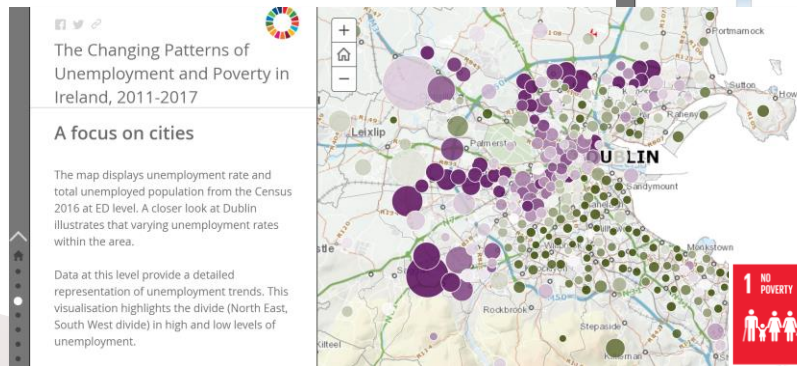
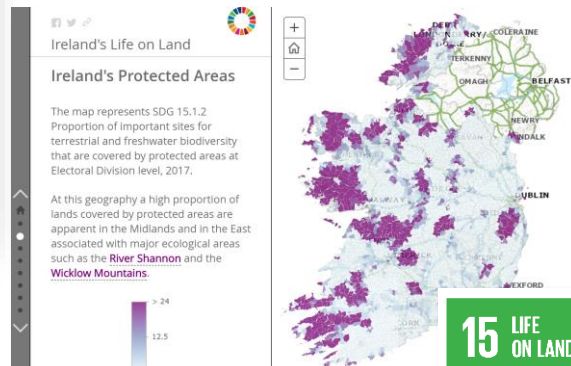


Rialtas na hÉireann
Government of Ireland

Delivering value through collaboration



<http://irelandsdg.geohive.ie/>



data.geohive.ie

Serving Ireland's geospatial information as Linked Data.

About the Initiative

The goal of Ordnance Survey Ireland's (OSI) initiative with ADAP is to develop a platform to publish OSI's geospatial data as Linked Data on the Web whilst adhering to best practices in the domain of geospatial information. The publication of Linked Data enables third parties to explore and consume rich data in a meaningful manner via a combination of simple, standardised technologies (e.g., RDF and URI) that operate over the Web's existing HTTP infrastructure.

[View details >](#)

Download and Query

Ordnance Survey Ireland's geospatial data is available both via Triple Pattern Fragments Server and web client, a Linked Data Ireland (e.g., by following the HTTP URI of County Dublin) and as downloadable datasets for local use.

[View details >](#)

Contact and Legal

Contact us:

- Corporate
- Graph

Or send us an email via geohive@osi.ie.

Legal:

- Corporate
- Privacy
- Terms of Use

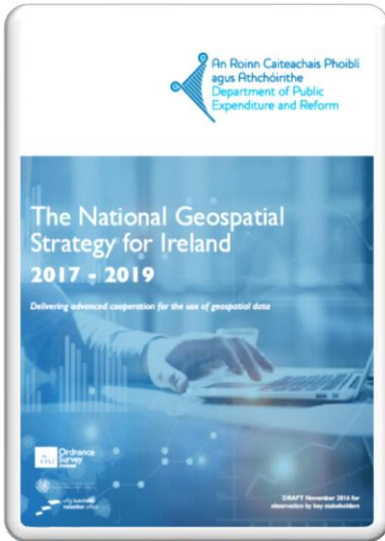


© 2016 Ordnance Survey Ireland.



ireann
of Ireland

Collaboratively leading national data strategy



- › OSi's 'Geohive' platform specified as the State's national geospatial infrastructure.
- › OSi's Unique Geographic Identifiers (UGI's) specified as a national base register.