



Kartverket

The International response - Europe

Anne Cathrine Froestrup DG Kartverket,
Norway

IGIF

International
Geospatial Integrated
Framework

GGRF

Global Geodetic
Reference Frame





Kartverket

Geospatial data for sustainable development

Everything happens somewhere



Kartverket

Integrated Geospatial Information Framework (IGIF)



Current Status IGIF

- **Support preparation of Country Action Plans in further countries in 2020**

Completed Pilots	In Progress		Planned
<p>Palestine (WB)</p> <p>Guyana (FAO)</p> <p>Tirana, Albania (WB-FAO)</p>	<p>Georgia (Norway)</p> <p>Kyrgyzstan (Norway)</p> <p>Moldova (Norway)</p> <p>Ukraine (Norway)</p> <p>Fiji (UNSD)</p> <p>Tonga (UNSD)</p> <p>Mongolia (UNSD / WB)</p>	<p>Seychelles (WB)</p> <p>Serbia (WB-FAO)</p> <p>Vietnam (WB-FAO)</p> <p>Colombia (WB)</p> <p>Burkina Faso (UNSD)</p> <p>Nepal (UNSD)</p> <p>Ethiopia (UNSD)</p>	<p>Mongolia (UN/WB)</p> <p>Tanzania/Malawi (WB)</p>

Regional workshop - Georgia - 1 to 3 Oct. 2019 'Integrated Geospatial Information Framework'

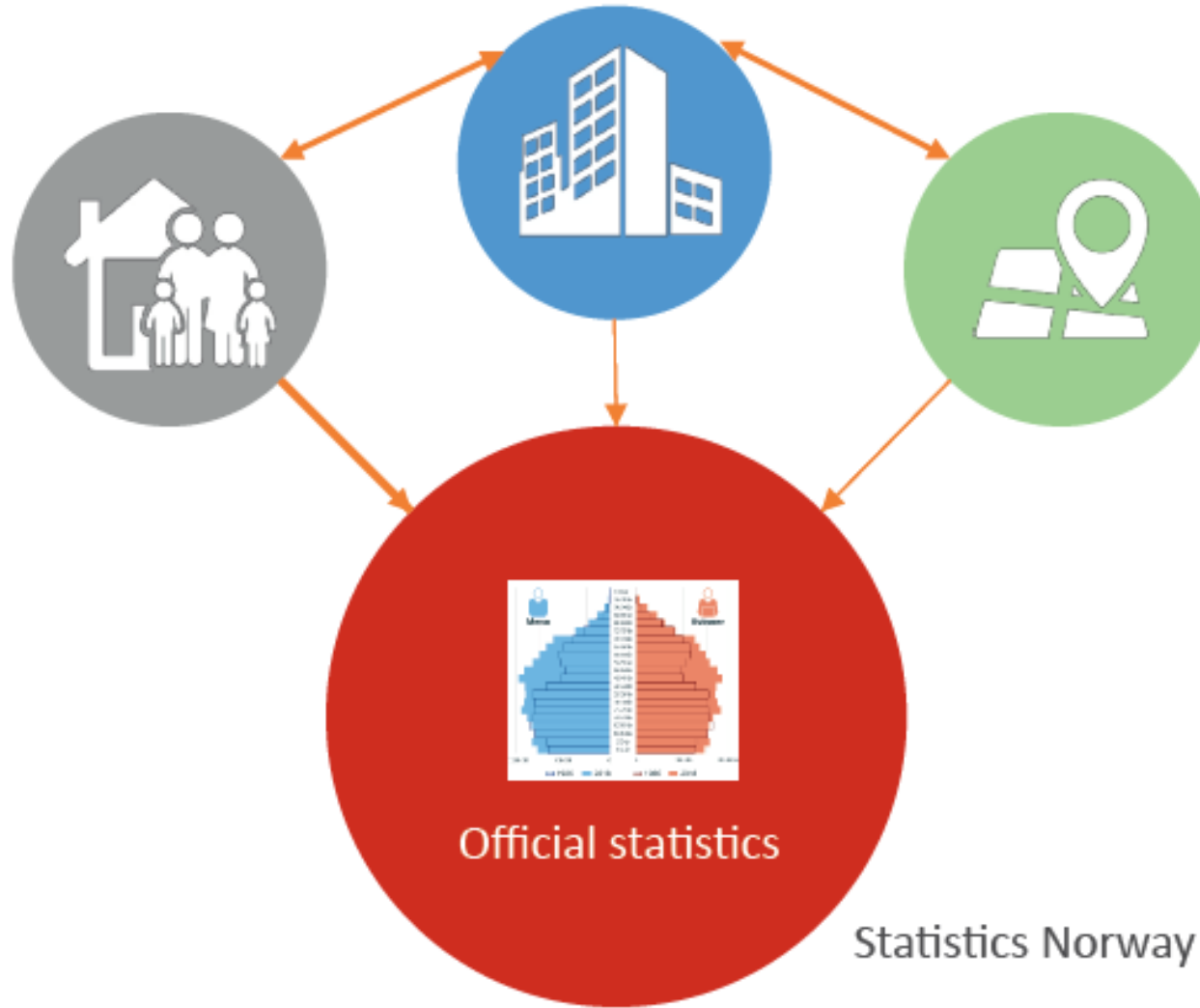
50 participants from Georgia,
Kyrgyzstan, Moldova, Ukraine,
Tadjikistan and Norway



The National Coordinating Register for
Legal Entities in Brønnøysund
BUSINESSES

The National Registry
(Skatteetaten)
POPULATION

The New Cadastre
(Norwegian Mapping Authority)
PROPERTIES



Why IGIF in the context of EG ?

- **EG: Connecting Europe - and connecting Europe and the international geospatial infrastructure**
- **Reporting once – sharing information**
- **Our contribution provides benefits to the society.**
- ***Our contribution to achieve the SDG 2030***



UN-GGIM – Why improve the GGRF

Anne Cathrine Frøstrup



Photo: Bjørn-Owe Holmberg

The Global Geodetic Reference Frame is the foundation for all geospatial information



Critical gap: GGRF is degrading while the need is expanding

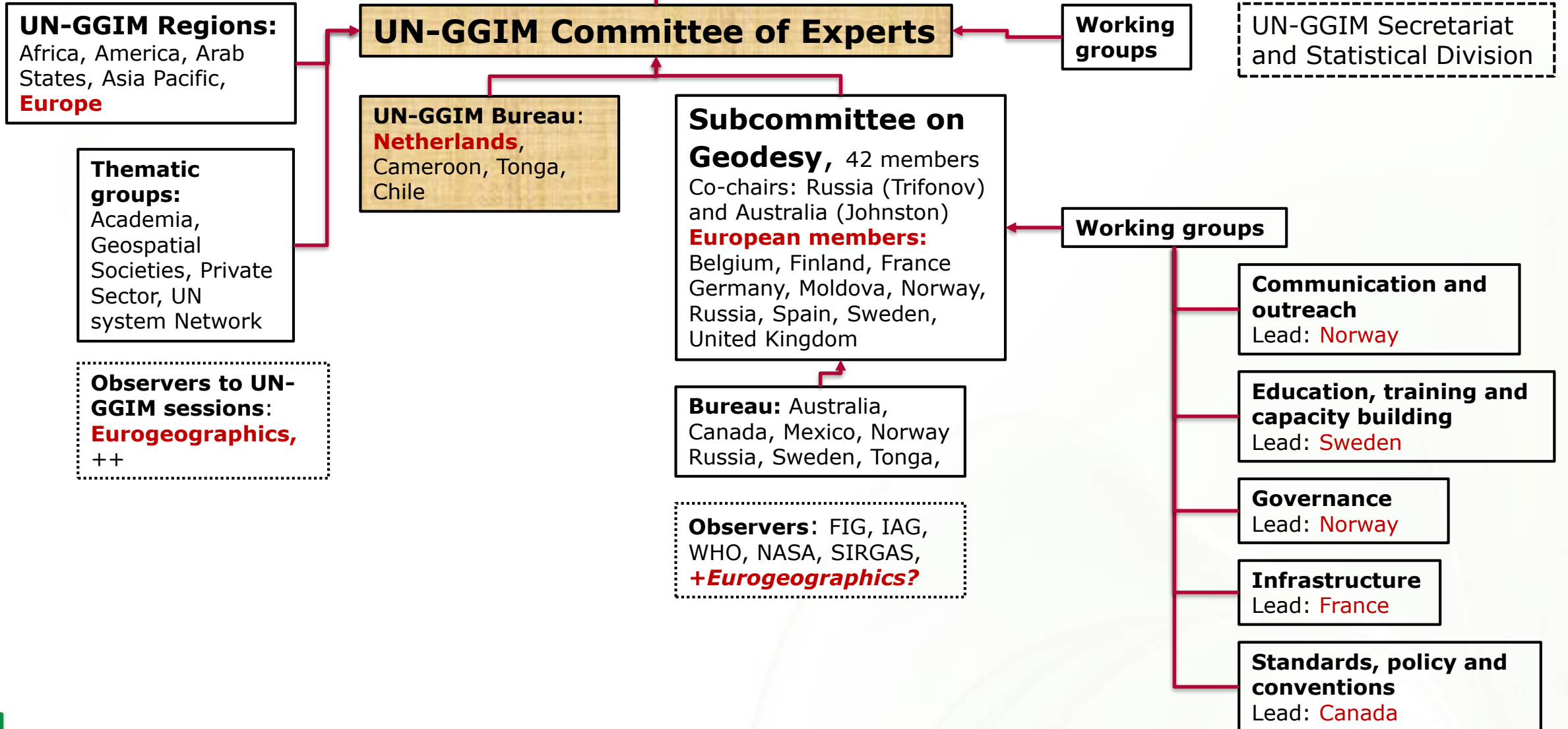


Autonomous mobility



Photo: ITS NORWAY

UN Economic and Social Council, ECOSOC



European members of the subcommittee

1. Belgium
2. Finland
3. France
4. Germany
5. Republic of Moldova
6. Norway
7. Russian Federation
8. Spain
9. Sweden
10. United Kingdom



Leading up to a global geodetic centre of excellence (GGCE)



- 2015: UN resolution on the GGRF
- 2016: GGIM6 requested a position paper on governance
- 2018: GGIM8 requested a broad consultation of the position paper on governance
- Intersectional period: Position paper consultations with UN-GGIM regions, interalia proposal to establish coordinating unit, email sent to chair of UN-GGIM:Europe in Spring 2019
- 2019: GGIM9: Subcommittee revised position paper based on the consultations and published it as part of the meeting documents
- 2019: GGIM9: At the GGRF side event on the revised position paper was presented
- Coming period: work to fill the requests from GGIM9

Very strong mandate from UN-GGIM 9.session on the GGCE



Photo: Anne Jørgensen

- 30 interventions (27 from Member States and 3 from NGOs)
- Of which 19 interventions was supportive of the GGCE and no one against
- The Russian Federation and Germany said that they work to find funding to host/contribute to the GGCE
- India announced their willingness to support education, training and capacity building activities

Defining the program of work



Photo: Anne Jørgensen

- Intent is that Centre will follow UN-principles and modalities
- The global and regional geodetic needs are the basis for the development of the program of work
- Plan is to present the initial Centre work program to the UN-GGIM Bureau in April 2020
- Work program will be developed in close cooperation with the International Association of Geodesy and the International Federation of Surveyors and other relevant geodetic stakeholders
- Progress and status will be reported at to UN-GGIM in August 2020.

Active Member State participation is needed



Photo: Anne Jørgensen

- All UN-GGIM Member States can take part in the work of the subcommittee by informing the co-chairs in writing what their intended contribution are and that they want observer status
- NGO's (Eurogeographics) can participate in the meetings and working groups of the Subcommittee if it asks to become an observer
- As the outreach and engagement capacity of the subcommittee is limited, Member States are encouraged to actively contact the co-chairs and ask to be involved in the subcommittee work

Questions?

