



Schweizerische Eidgenossenschaft
Confédération suisse
Confederazione Svizzera
Confederaziun svizra

Federal Office of Topography swisstopo
Communication and Web

wissen wohin
savoir où
sapere dove
knowing where



Welcome to swisstopo!



Federal Office of Topography Swisstopo



- **A long tradition**
- founded in 1838 by General Guillaume-Henri Dufour



Our vision

Geoknowledge – for a society in transition



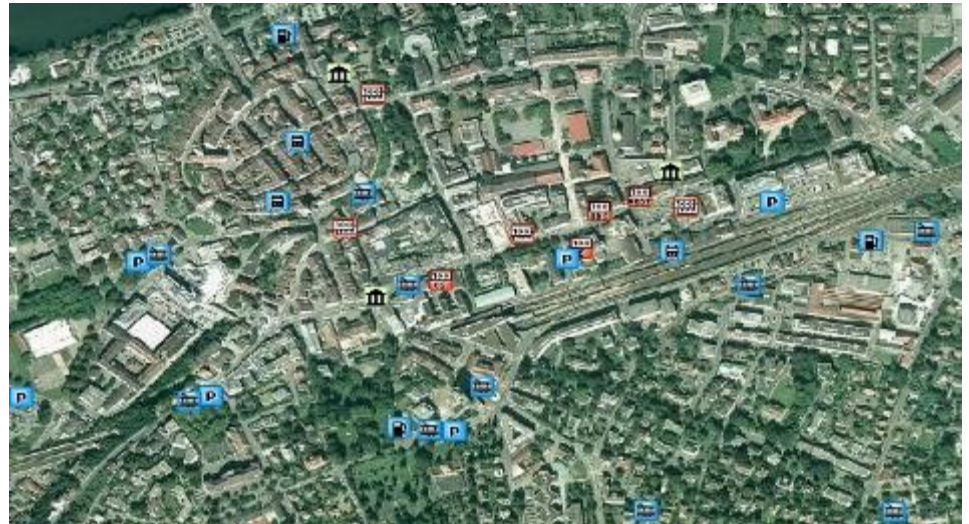
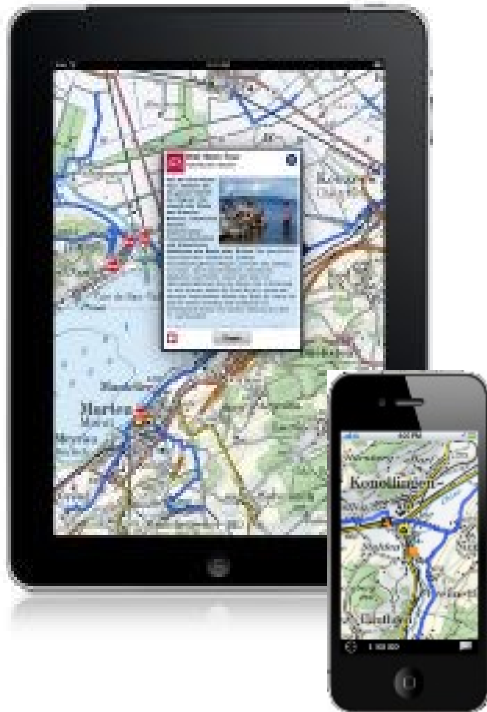


Geodata: enhanced benefits for everyone

“Geodata is to be made available for general use across the whole of Switzerland, in a sustainable, up-to-date, rapid and easy manner, in the required quality and at a reasonable cost.” (GeolG, Art. 1).



Digital geoinformation accessible to the people





swisstopo strategy





Centre of competence



swisstopo is expanding its position as a centre of competence for geodata and georesources.



Most recent reference data



swisstopo makes the most recent georeferencing data on Switzerland universally available in the quality required.



Open Government Data (OGD)



swisstopo makes its digital official data and products available in line with OGD principles.



Open Government Data (OGD)

- Adjusting the legislative process



- Com



**Political will
???**





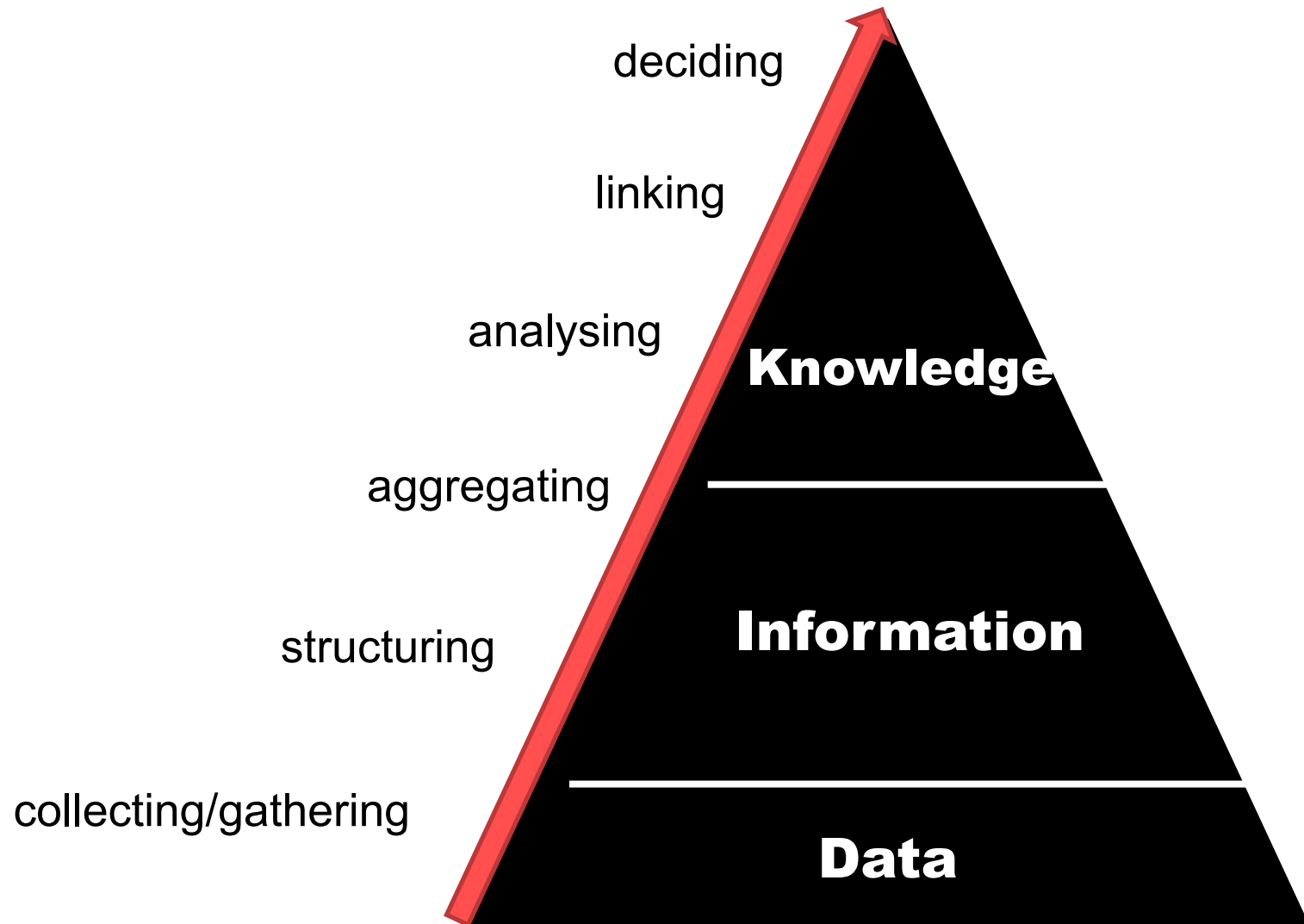
Usability



swisstopo enhances the usability of its data and products.



From information to knowledge





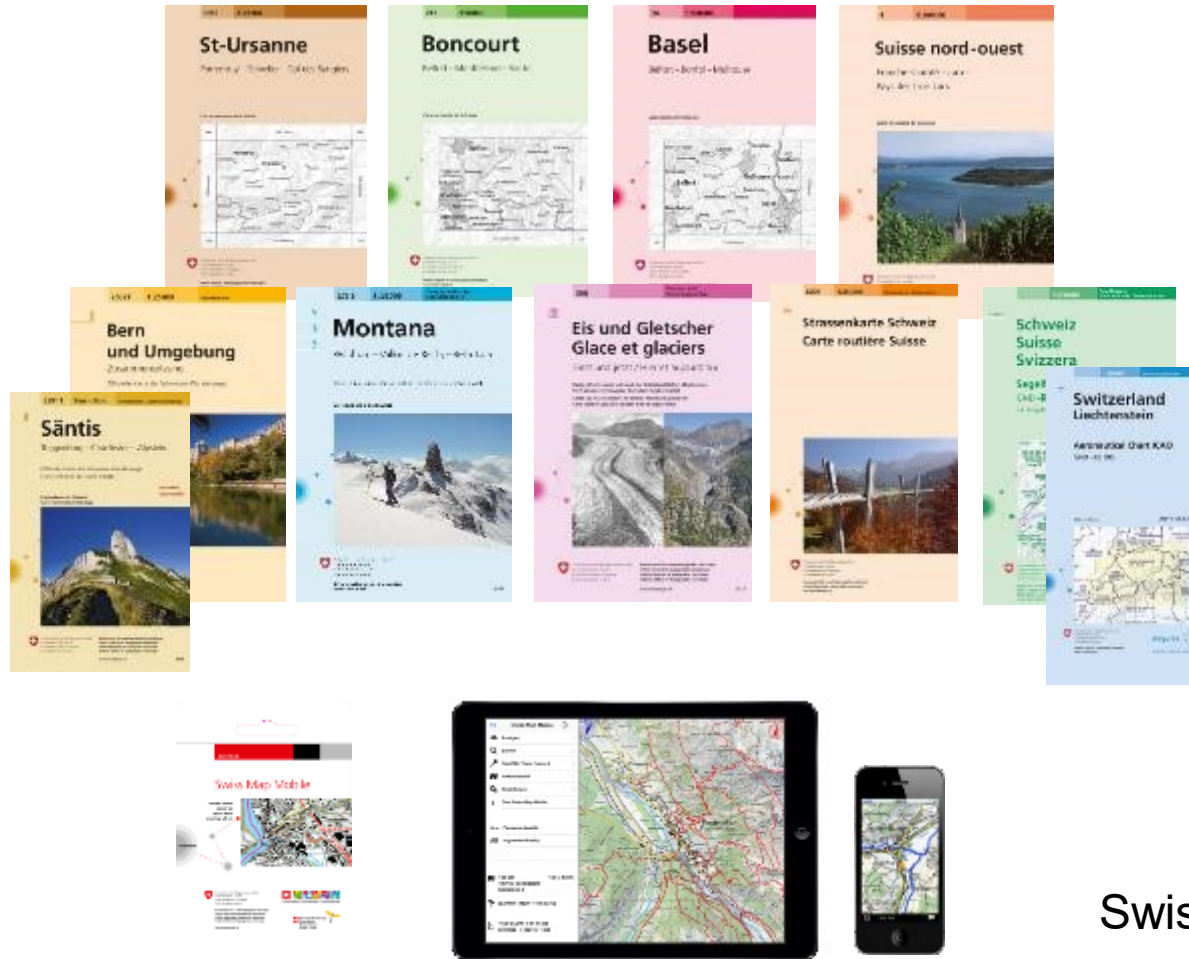
Product range



swisstopo complements its range of Swiss georeferencing data in cooperation with its partners.



National maps



topographic,
analogue

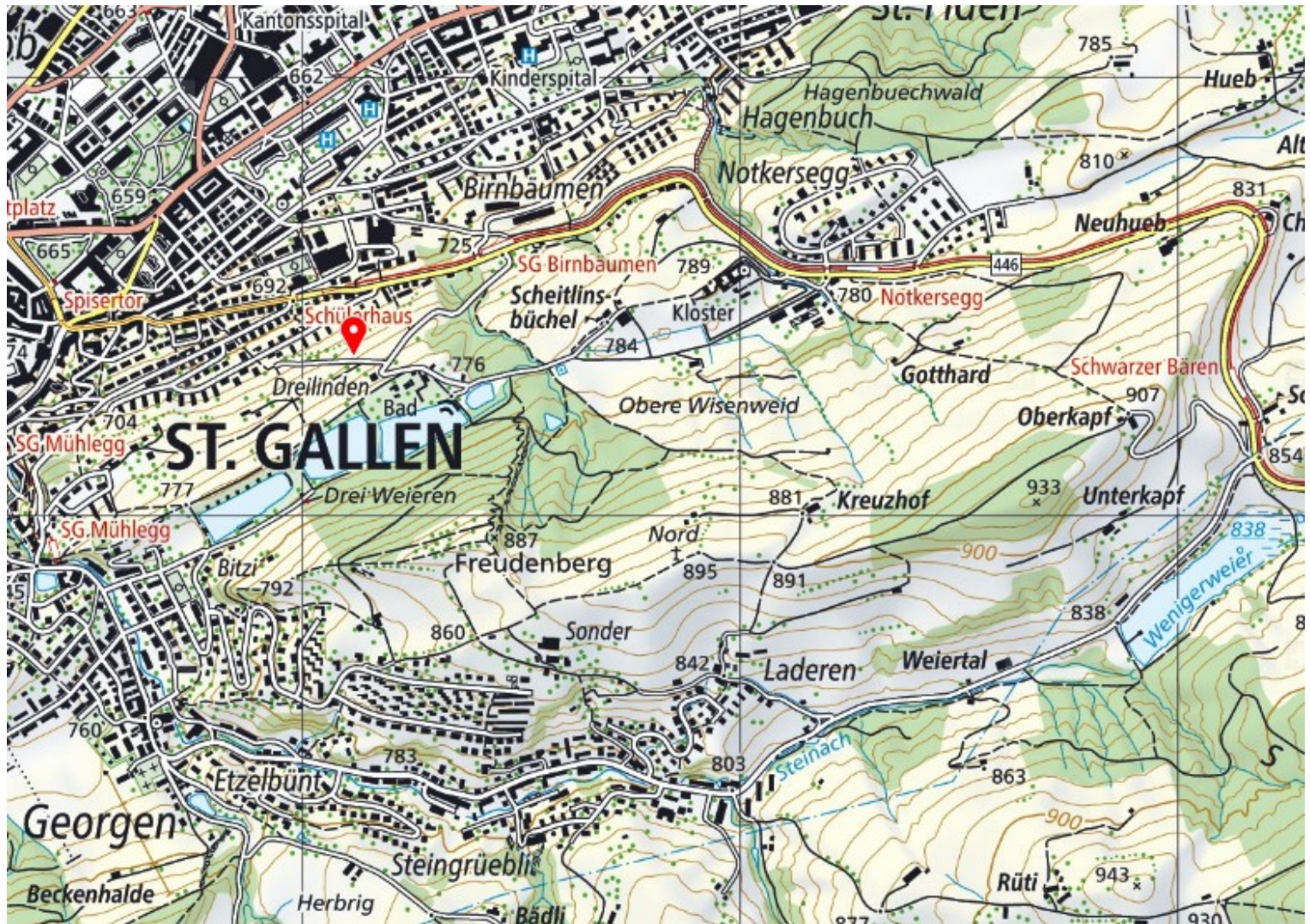
thematic,
analogue

digital

Swiss Map Mobile

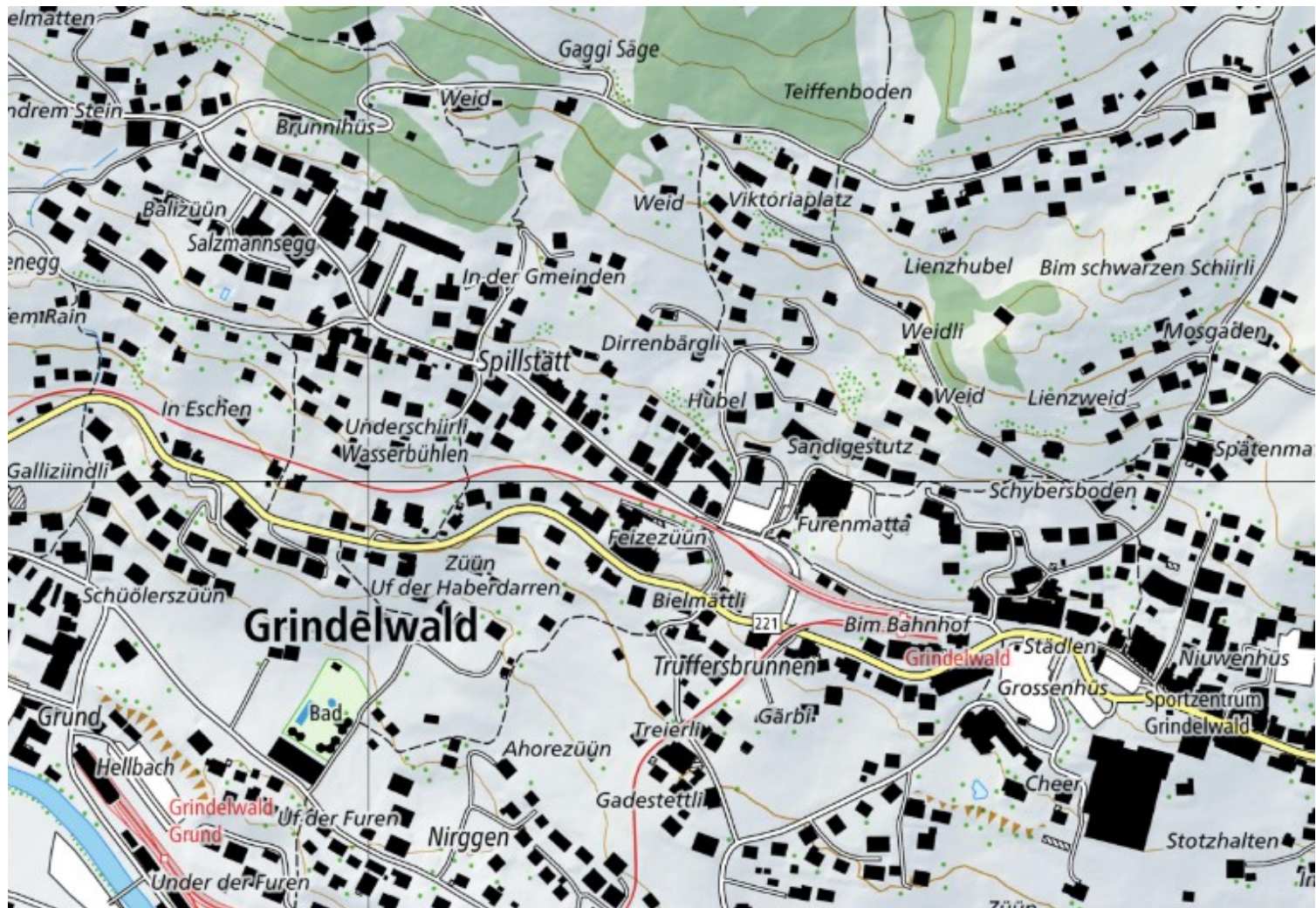


New national map 1:25 000





National map 1:10 000



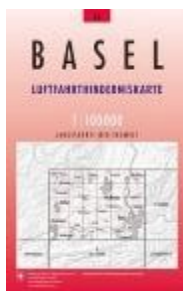


Ski touring / snowshoeing





Flying

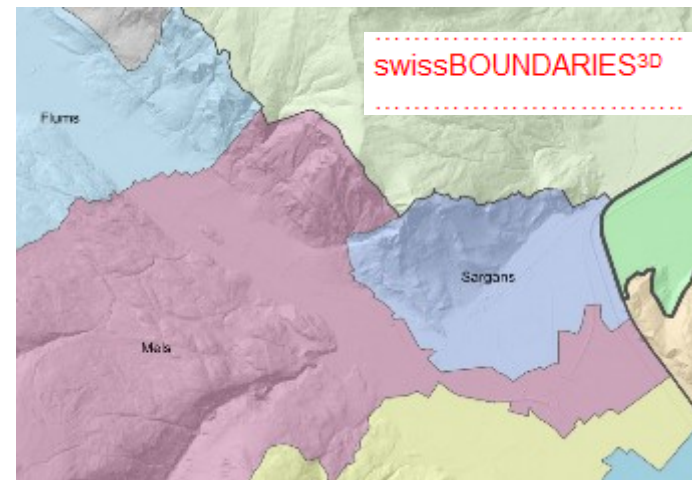


Special maps: ICAO, gliding, aviation obstructions





Landscape models - products





Elevation data - products

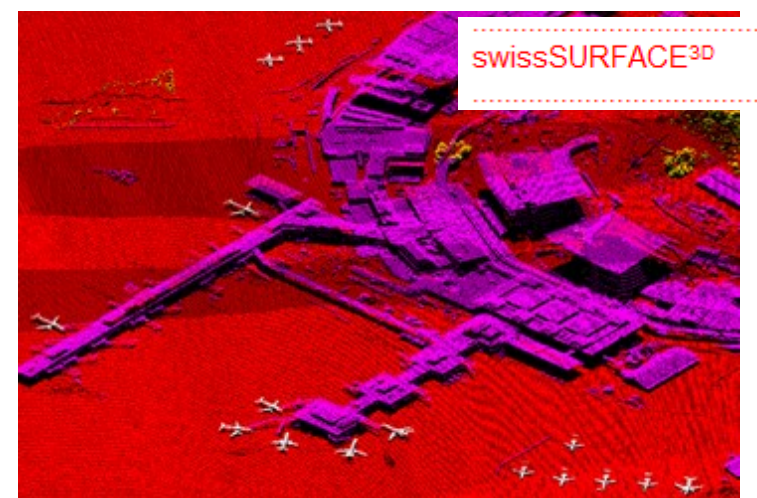
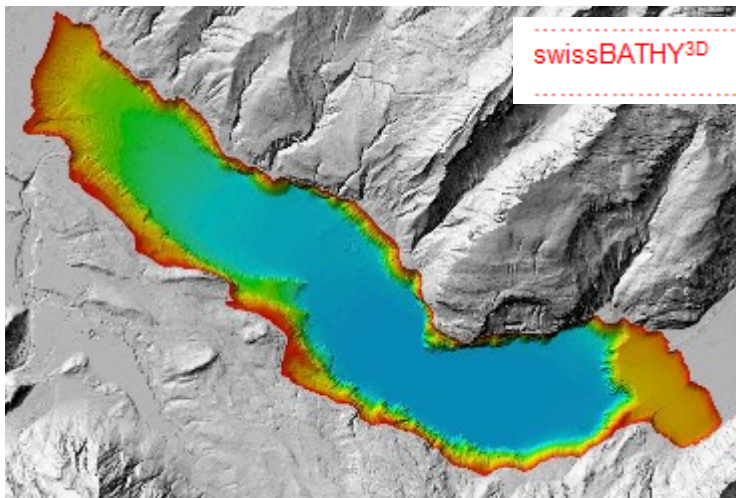
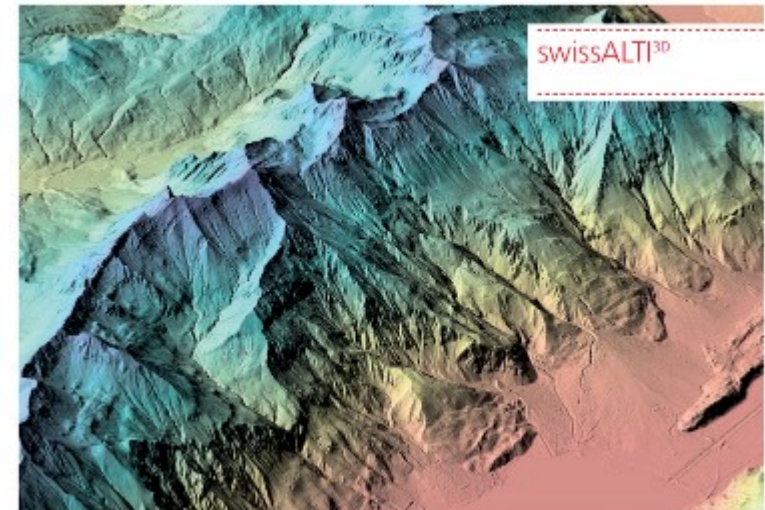
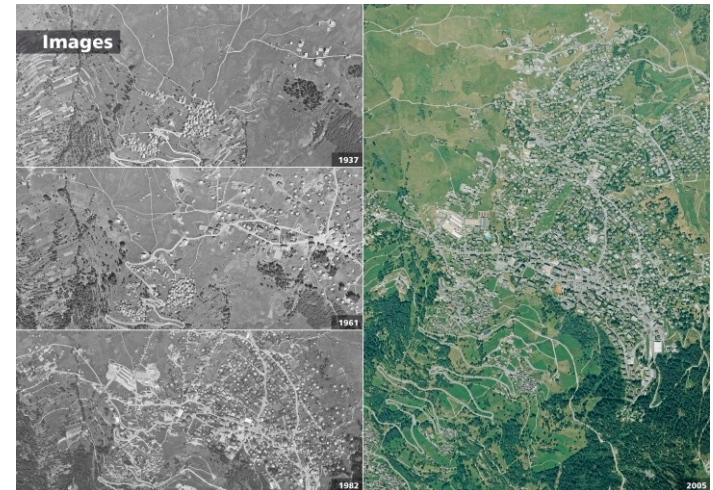
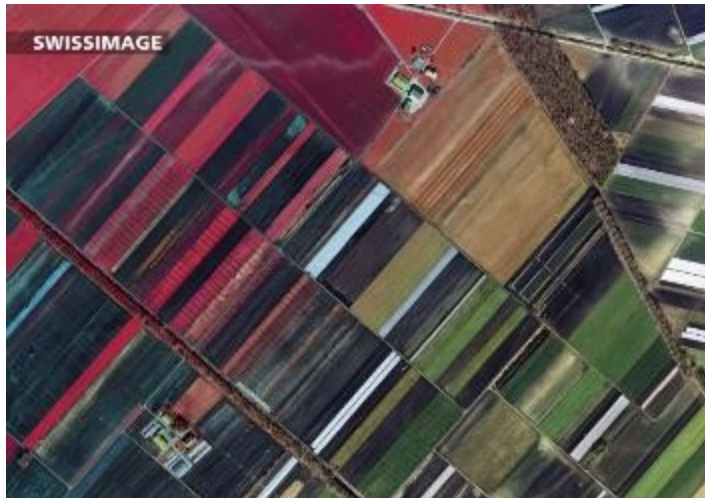
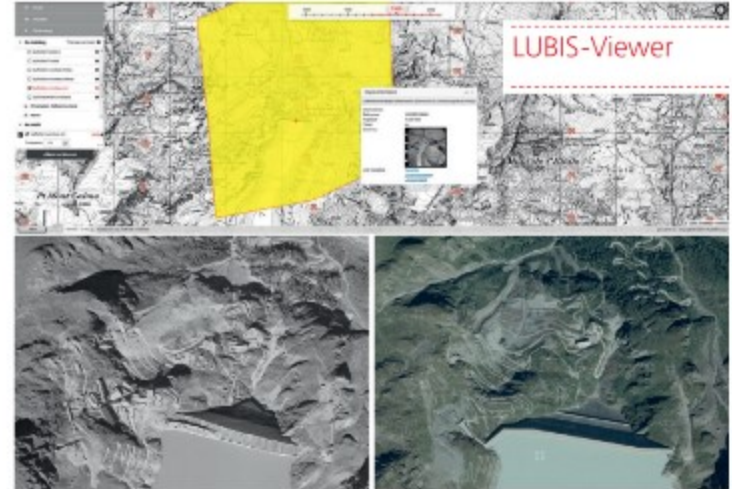




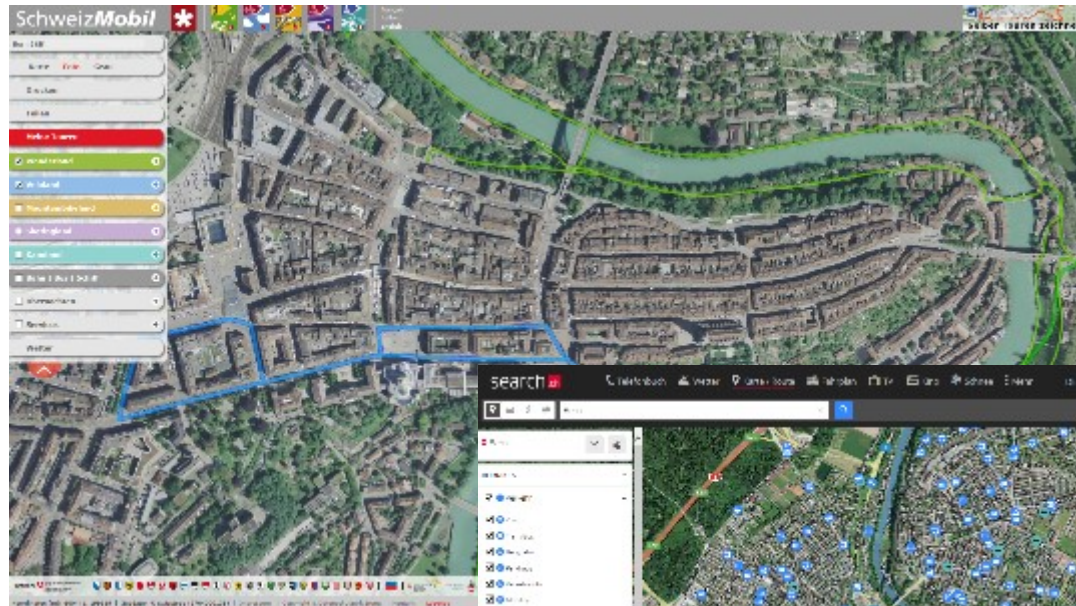
Image data - products



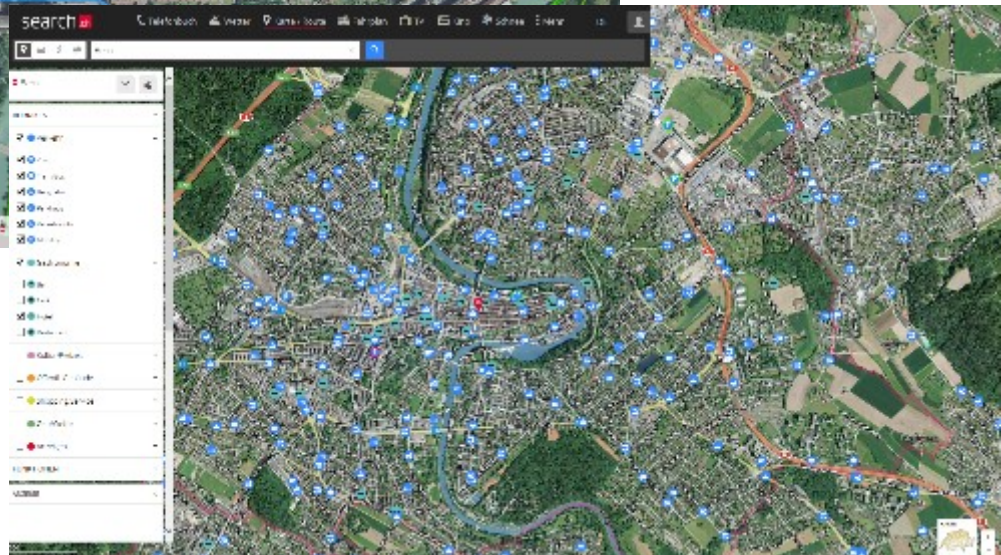


SWISSIMAGE at...

SchweizMobil.ch ...



... search.ch





Aviation service





Rapid Mapping

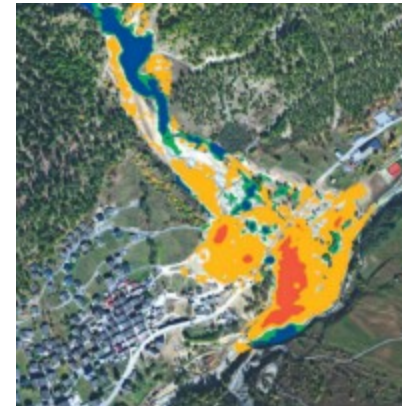
One example of swisstopo's services:
Storm in Wiler (canton Valais), 2011



Aerial photo
before storm
damage



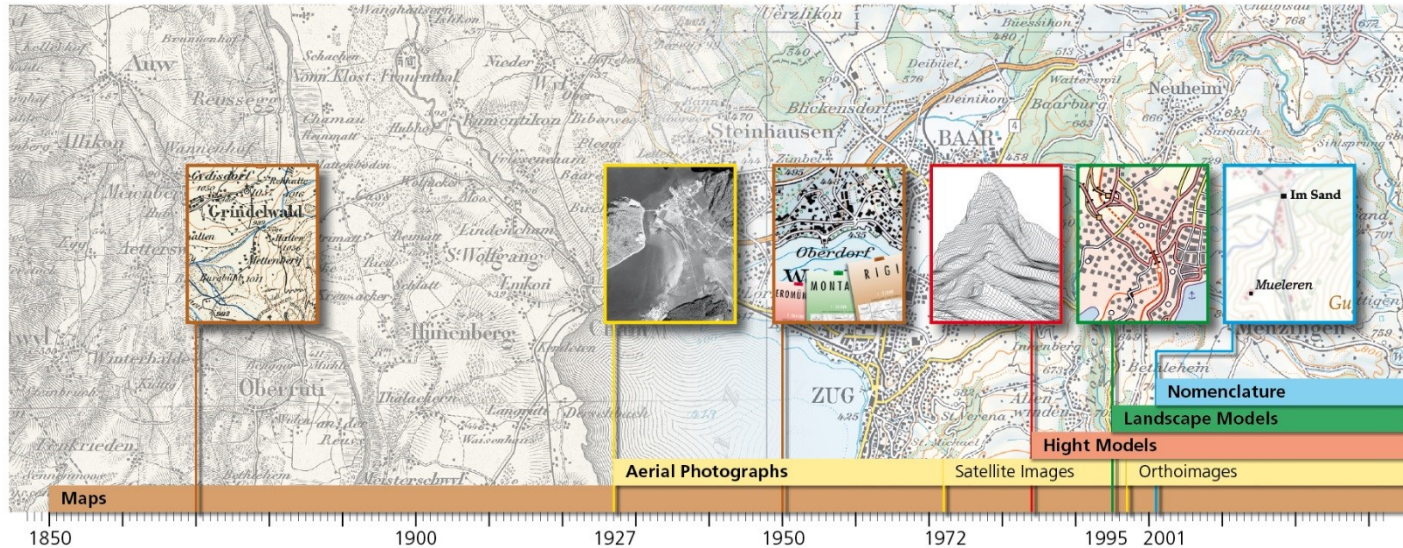
Aerial photo
shows storm
damage



Analysis of
changes



Landscape memory



Spatial monitoring

- Spatial reference data - Spatial development
- Georeference data is updated and archived



Landscape memory

Time travel



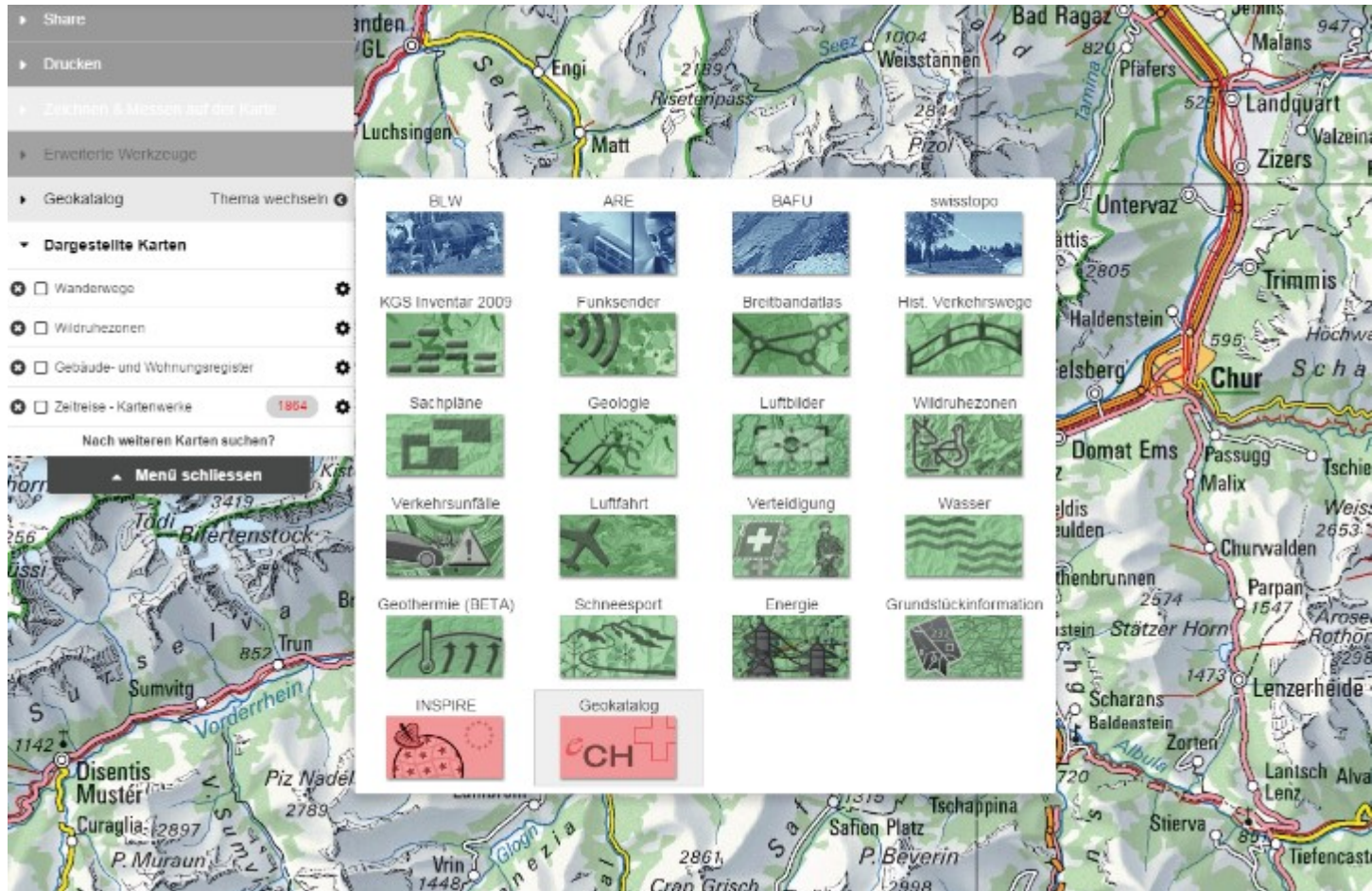


Federal geoportal with map viewer: map.geo.admin.ch





Federal professional geodata portals





swisstopo for schools

Treasure hunt



StoryMaps



swisstopoEDU - MSc:
Programme for
supporting Masters
theses



sCHoolmaps.ch



LUBIS-Viewer



A journey through time

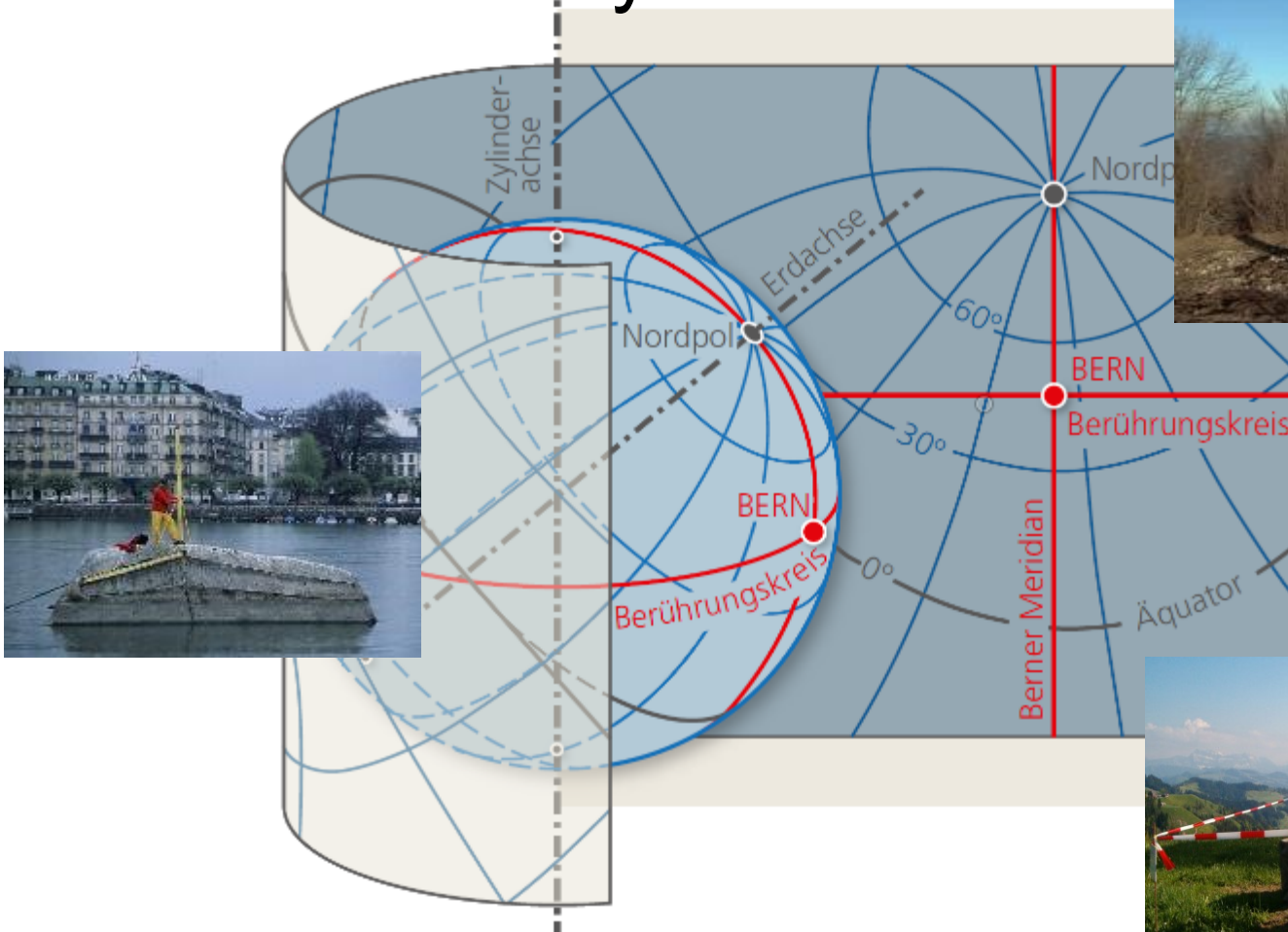




National surveying

Geodetic basics

Swiss positioning service
with cm accuracy





National borders

5 countries: 1935 km

Surveying

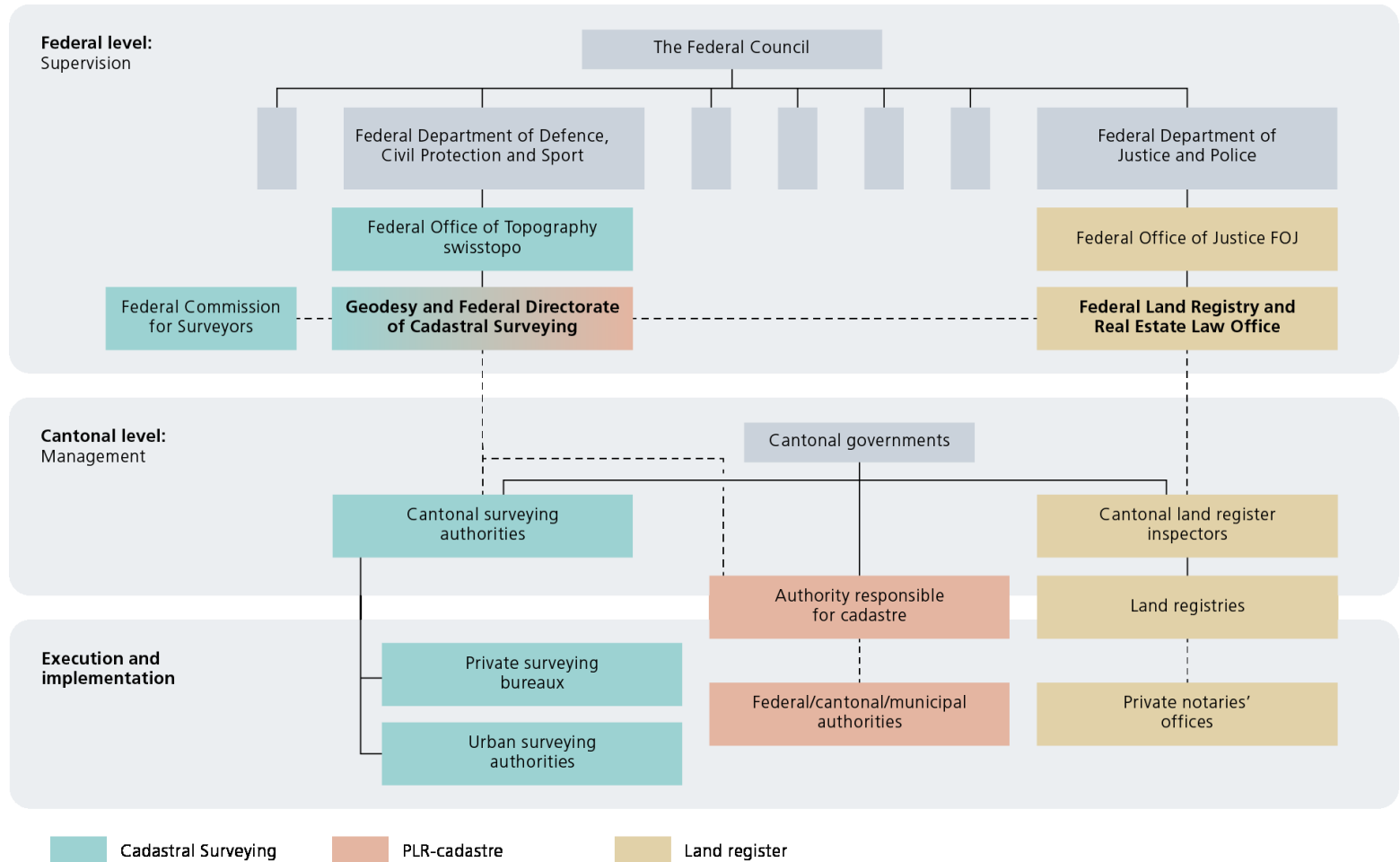
Maintenance

Documentation





Swiss cadastre, guarantor for property rights





The three pillars of the cadastral system

Official survey



Provides geometric data on property ownership and thus makes an important contribution to the protection of property rights



PLR cadastre



The reliable, official information system for the most important public law property restrictions.



Land register



The state register of real property rights





www.cadaastre.ch : Website of the Swiss cadastral field

Cadastral Surveying

PLR-cadaastre

Land register

About cadaastre.ch

Services & publications


News

Manuals for professionals

cadaastre.ch

Swiss cadastral system

The Swiss cadastral system comprises the cadastral surveying, the Cadastre of Public-law Restrictions on landownership (PLR-cadaastre) and the land register.



Cadastral Surveying

It is no exaggeration to state that the cadastral survey provides an essential basis for important areas of modern-day life. Around 3,150 qualified personnel are involved in its development: licensed surveyors and their colleagues.

[Link to Cadastral Surveying](#)

Cadastral survey

PLR-cadaastre

Land register



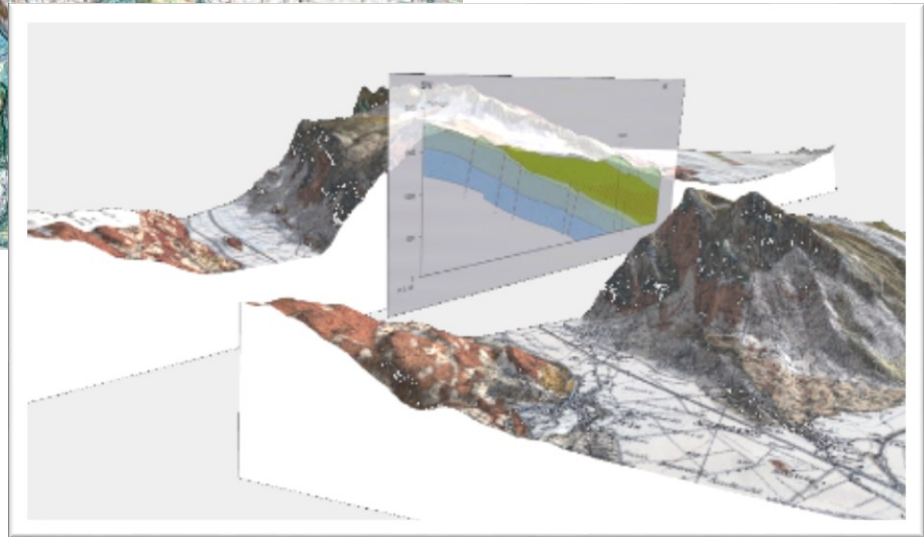
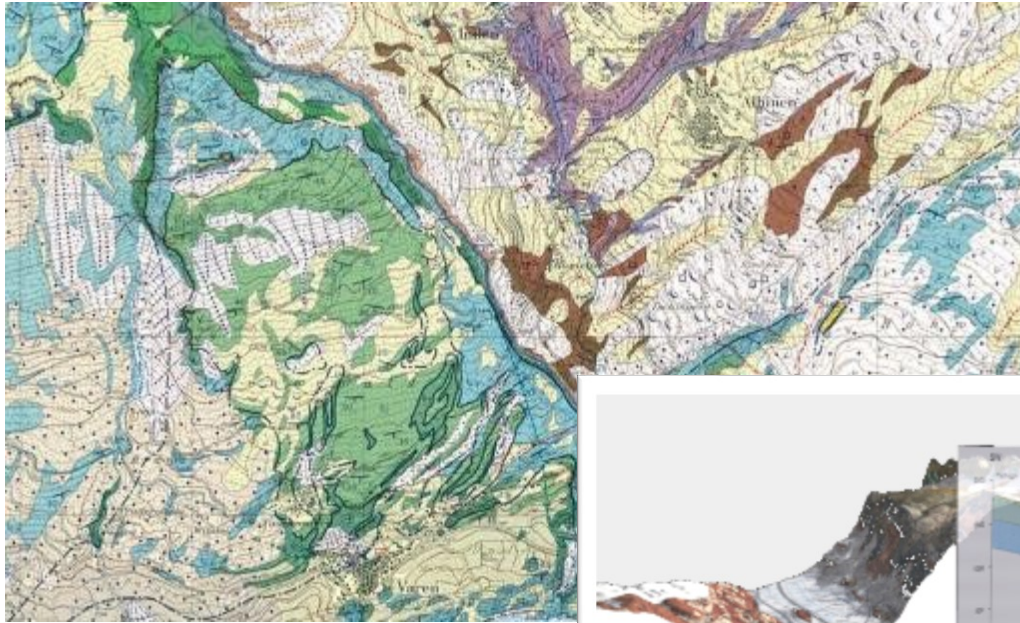
National geology





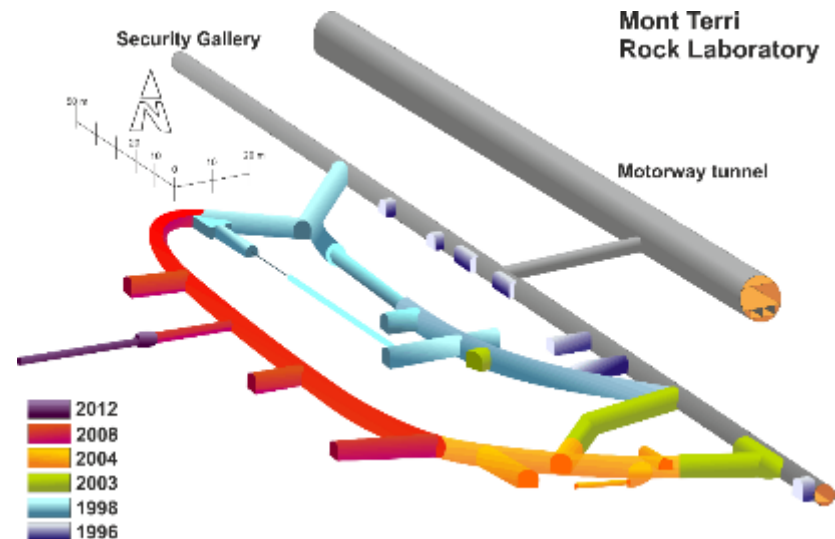
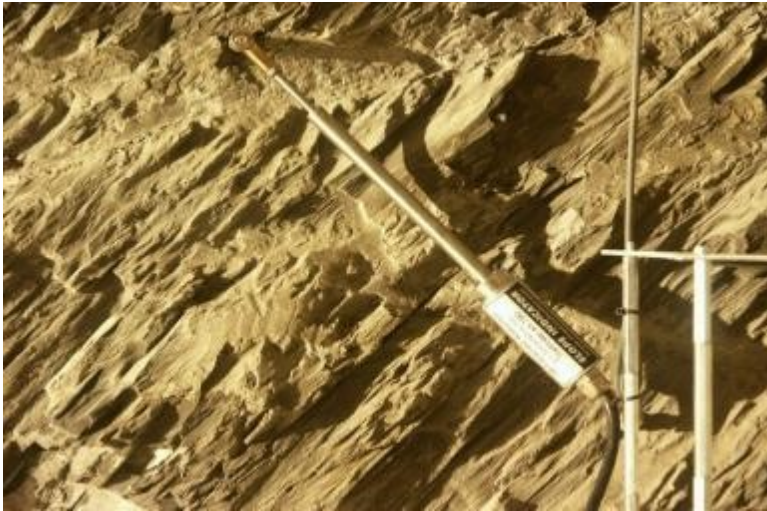


Geological data, samples, drill cores, maps, expert reports, information systems





Mont Terri Rock Laboratory

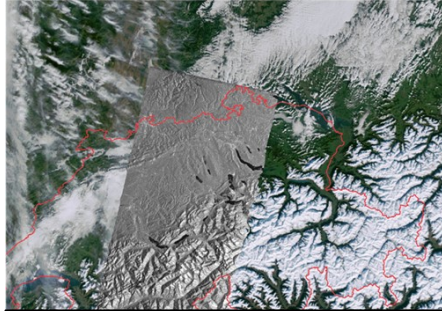




NPOC National Point of Contact for Satellite Images



Satellite data and
product advice



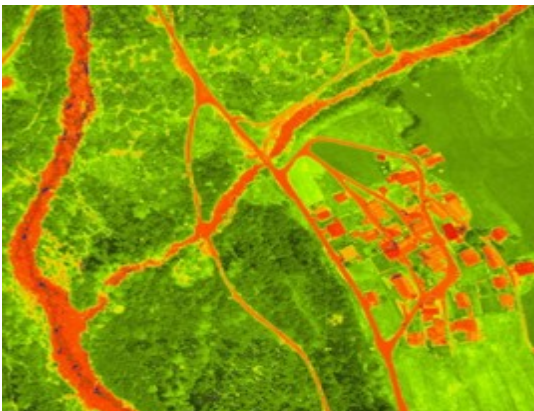
Programming &
data orders



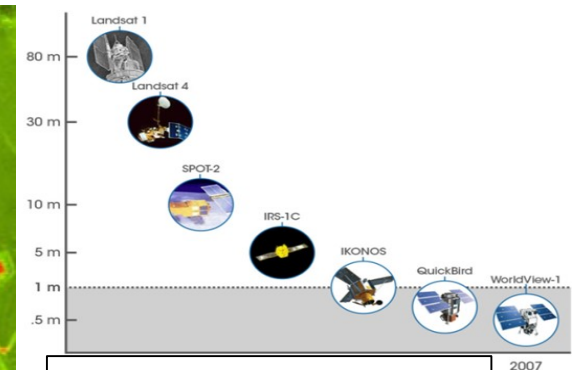
Scientific advice



NAZ satellite
charter and rapid
mapping



Data extraction



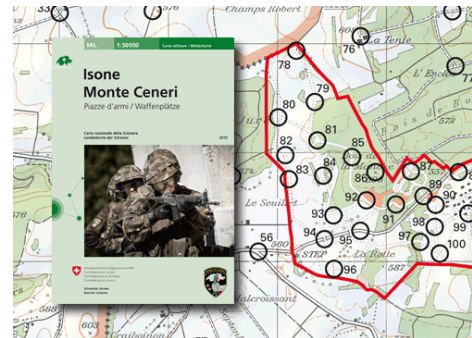
Training and
promotion



Institute for Military Geography

Management, procurement, processing and production of geodata for the specific needs of the army.

Swiss representation abroad in the field of military geography.





Staff

- Around 356 employees (310 FTE units)
- Of which 27 trainees
- 1/4 are women
- 1/5 are French- or Italian-speaking
- 1/3 work part-time
- 1/2 have an academic education



Finance



Finance

- Outlay of around 66.5 million Swiss francs
Earnings of around 23.3 million Swiss francs
(40% external, 60% internal)
- Transfer expenses of around 13 million Swiss francs
- Cost coverage of around 30%



swisstopo on the web

www.swisstopo.ch



@swisstopo
@swisstopo_en

