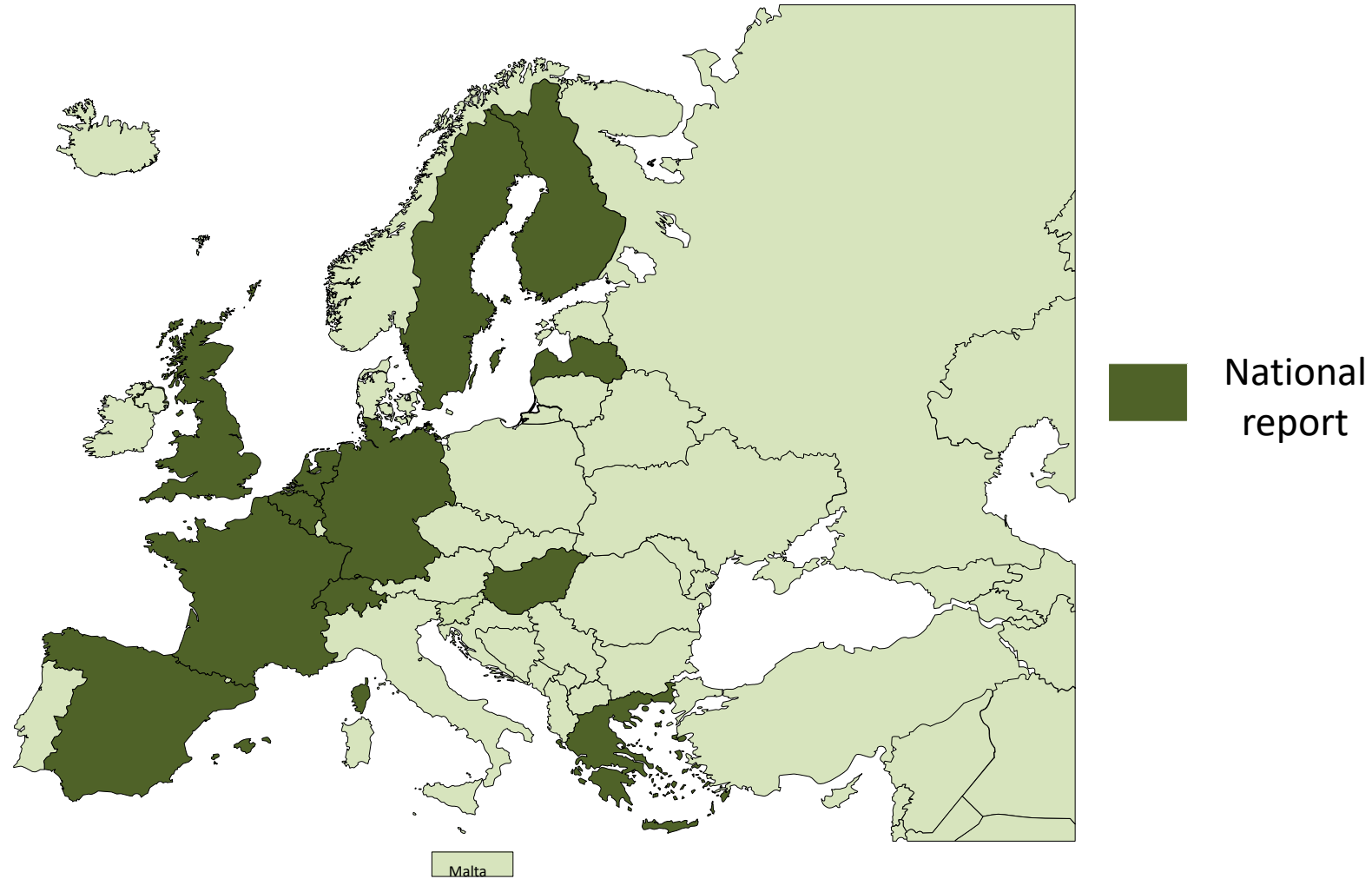


National Reports

2. October 2019, Bern

Prepared by Tamás Palya,
vice-chair of QKEN

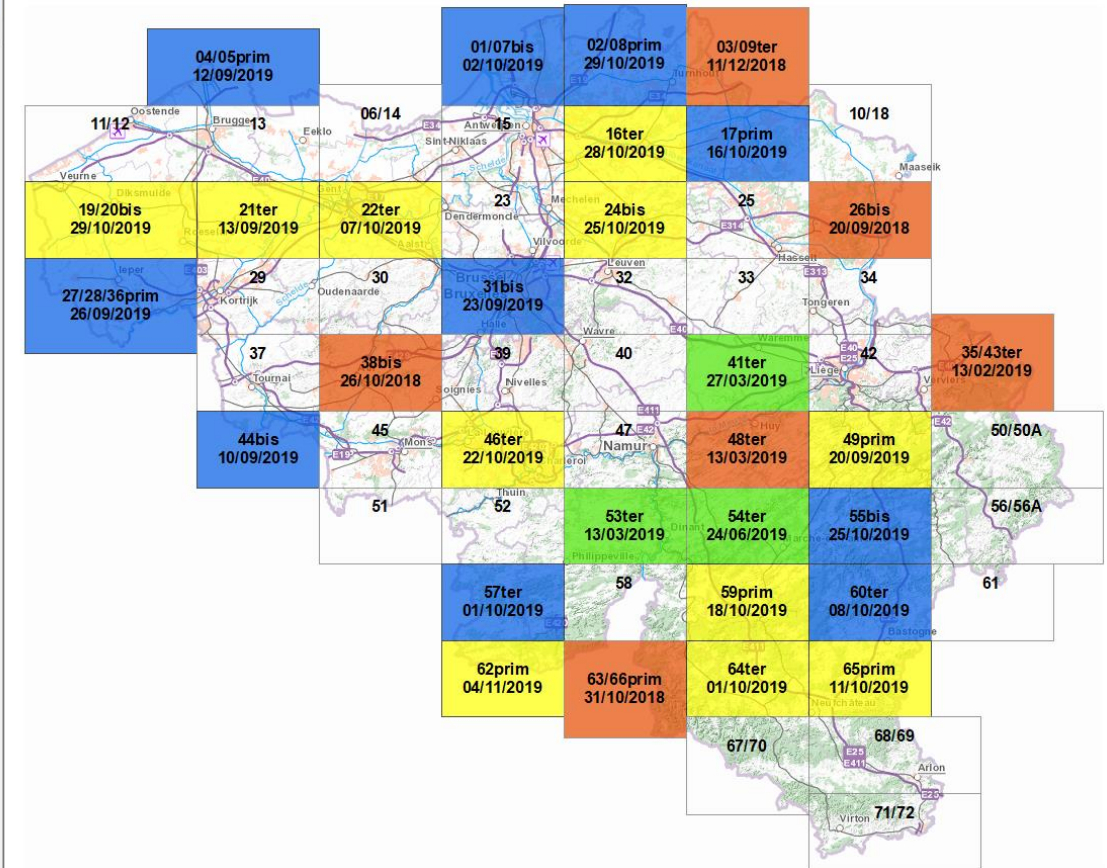
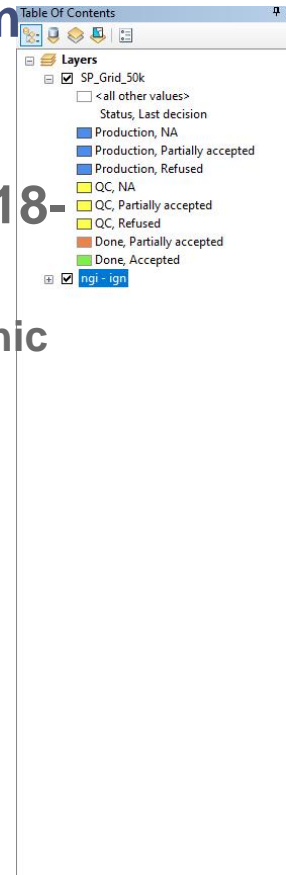
12 National reports from 11 countries



National Geographic Institute, Belgium From May 2019 to October 2019

- External data update is ongoing (2018-2020)

- Constructions, road network, hydrographic network, landcover
- About half area Belgium in treatment
- Modification of automatic check for the update of objects metadata information. Update on FME scripts that classifies updated data in different classes: unchanged, modified, new + split/merge (new)



National Geographic Institute, Belgium From May 2019 to October 2019

- **QC remarks integrated to DB Remarks**
 - Error discovered during the QC process (visual control) are integrated in DB Remarks
 - Use of DB Remarks to correct and to increase quality of Database
 - Concern anomalies found
 - In proximity of samples
 - Or outside the specifications send to external producer
- **QC on internal process (post processing)**
 - First QC on completely achieved sheet (control on internal process)
 - Restructuration QC and process update after validation of external data

National Geographic Institute, Belgium

From May 2019 to October 2019

- **Member team QC partially busy with archiving**
 - In relation with the move of NGI Belgium
 - Choice of collaborator with experience and enough know-how to archive old document

National Land Survey, Finland

From May 2019 to October 2019

- **News concerning Data Quality**
 - Annual test preformed by private company has been carried out during the summer.
 - The test concept is the same as in 2018 test.
 - 14 test fields Around Finland
 - 1x1 km for buildings
 - 3x3 km for roads and addresses
 - Completeness (commission/omission) for buildings and roads
 - Thematic accuracy for addresses (Municipalities official addressees compared to addressees in NLS GIS database)
 - Report will be published on 13.11.2019.

National Land Survey, Finland

From May 2019 to October 2019

- News concerning quality management
 - Ongoing workpackage *Quality management in the National topographic database of Finland.*
 - 18 municipalities has operating license to download their data.
 - 8 use quality guard independently to check topological consistency.
 - Negotiations are going on with many municipalities.
 - Quality handbook for Topographic data
 - First version of the handbook has been written.
 - Comments are being asked from municipalities and companies.
 - Update based on the comments.

National Land Survey, Finland

From May 2019 to October 2019

- Any other news that would be of interest for Q-KEN?

IGN, France

From May 2019 to September 2019

- **News concerning Data Quality**
 - Under a contract with the MoD, passed by the DGA (Directorate General of Armament), France is the seventh data qualifying country in the context of international production T-REX (DTM from satellite imagery).
 - WG QUADOGEO (QUALification of GEOgraphic data(DONnées)) : the goal is to define methods and tools, accessible to all, to estimate and communicate the quality of the data diffused.

IGN, France

From May 2019 to September 2019

- News concerning quality management
 - As part of the end of the ISO9001 certificate, IGN is studying the extension to other standards (ISO14001 and ISO45001)

IGN, France

From May 2019 to September 2019

- Any other news that would be of interest for Q-KEN?
 - none

BKG, Germany

From April 2019 to October 2019

- **News concerning Data Quality**
 - test phase of tool for documentation of user demands ended successfully
 - Changes in international standards OGC and ISO impact on the national law.
 - Principles for QM defined
 - Structure, form, depth of content for quality reports defined (Standalone report for experts, quality report as a part of user guide for non-expert users.)

BKG, Germany

From April 2019 to October 2019

- **News concerning quality management**
 - **New president since April 2019**
 - **New strategy since June 2019**
 - **New structure from December 2019**
 - **QM shifted to Leipzig**

Ordnance Survey GB

From May 2019 to October 2019

- **News concerning Data Quality**
 - The work on a new online editing system (targeted at even more efficient editing) is driving a need for data improvements.
 - The new agreement with Government for mapping and mapping services (which we hope to sign soon) is identifying new products and services as well as improved quality in a number of areas.
- OS is spending considerable money on both of these

Ordnance Survey GB

From May 2019 to October 2019

- **News concerning quality management**
 - Our new Data Governance Framework is getting increasing focus with Data Strategy, Data Principles and Data Policies all coming to the fore.
 - Next steps are on ensuring that we can enforce the principles and policies on all development.

Ordnance Survey GB

From May 2019 to October 2019

- Any other news that would be of interest for Q-KEN?
 - New CEO Steve Blair appointed June 2019
 - Renewed focus on delivery. Some activities being paused to allow others to complete.
 - Work with the Geospatial Commission continues
 - New policies on 3rd Party Data released. Focusses mainly on the retention and maintenance of data.

Ordnance Survey GB

From May 2019 to October 2019

- Topic I can offer for next webinar
 - Nothing at the moment
 -

Hellenic Cadastre , Greece

From May 2019 to Sep 2019

- **News concerning Data Quality**

- A new campaign is under way to check the positional accuracy of the spatial cadastral data of the 32 conventions of the latest cadastral program.
 - ✓ They already finished the specifications for:
 - Field measurements in totally 250 urban regions - 6250 GCPs across the country
 - For non-urban areas the accuracy will be checked using orthophotos. A total of 13,941 GCPs will be checked.

The agency has not yet decided whether to implement it by external contract or by the agency's resources..

Hellenic Cadastre , Greece From May 2019 to Sep 2019

- News concerning quality management
 - HC develop a custom made PMIS specifically designed for cadastral projects linked to the already installed MS Project Server and includes the monitoring and management of all the quality control procedures. It is in troubleshooting mode and expected to be completed until the end of the year.

KT123 Areas of Western Peloponnisos Report of: **November 2016** Current Status: **Rights Collection**

Overview KPIs Variables Financial Timetable Risks Issues **Deliverables** Dashboard Stakeholders

#	Deliverable	Date of First Submission	Loading Failures	Date Loaded	Control Start Date	Control End Date	Finalisation Date	Results Sent Date	Approval
1	Quality Plan	15/6/2016*	2	19/6/2016	21/6/2016	29/6/2016	10/7/2016	15/7/2016	Rejected due to missing information
2	Quality Plan	25/7/2016*	3	28/7/2016	29/7/2016	7/8/2016	10/8/2016	12/8/2016	Approved
3	Preliminary Cadastral Map	29/9/2016	5						

*the dates will be links to the DM

+ Add QP + Add PCM

#	Description	Legal	Spatial	Department	Assigned at	Assigned to	Deadline	Completion Date	Result
1	Database Loading	✓	TEΔΠΕ	TEE NA TAEETY	29/7/2016	John Doe	6/8/2016	3/8/2016	Approved
2	Check if all "locked" rights are included in the deliverable	✓	TEΔΠΕ	TEE NA TAEETY	29/7/2016	Jane Doe	6/8/2016	3/8/2016	Rejected
3	Automated checks on spatial data and topology validation	✓	✓	TEΔΠΕ	TEE NA TAEETY	1/8/2016	John Doe	8/8/2016	Clarification needed

Sample Evaluation Process

NA Assigned to	NA Assigned at	Deadline	NA Completed at	Evaluation Outcome	Contractor Notified At	Contractor Response Deadline	Contractor Response Date
John Doe	02/11/2016	25/11/2016	18/11/2016	Clarification needed	25/11/2016	25/11/2016	25/11/2016
TEΔΠΕ Assigned to Mike Don	TEΔΠΕ Assigned at 05/11/2016		TEΔΠΕ Completed at 15/11/2016				

Attachments Filter by Deliverable

#	Description	Deliverable	Upload Date
1	Acceptance of Quality Plan	Deliverable #1	20/10/2016
2	Acceptance of PCM	Deliverable #2	22/10/2016

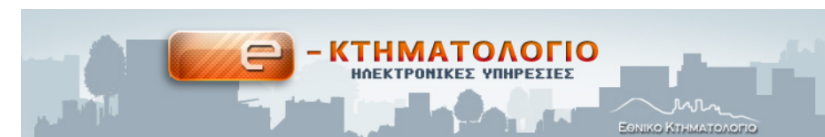
+ Add Attachment

Comments

Save as draft

Hellenic Cadastre , Greece From May 2019 to Sep 2019

- Any other news that would be of interest for Q-KEN?
 - Are now available on the website of Hellenic Cadastre, orthophotos that cover the whole country for 3 time periods 1945-1960, 2007-2009 and 2015-2016.
It is also available orthophotos that cover the Attica region for 2010-2011.
- The organization has new services on its website (e-cadastre):
 - ✓ Cadastral survey: services for the rights owner's
 - ✓ Land registry in operation: services for the rights owner's
 - ✓ Forest maps: services for the rights owner's
 - ✓ Services for Professionals (Engineers e.t.c.)

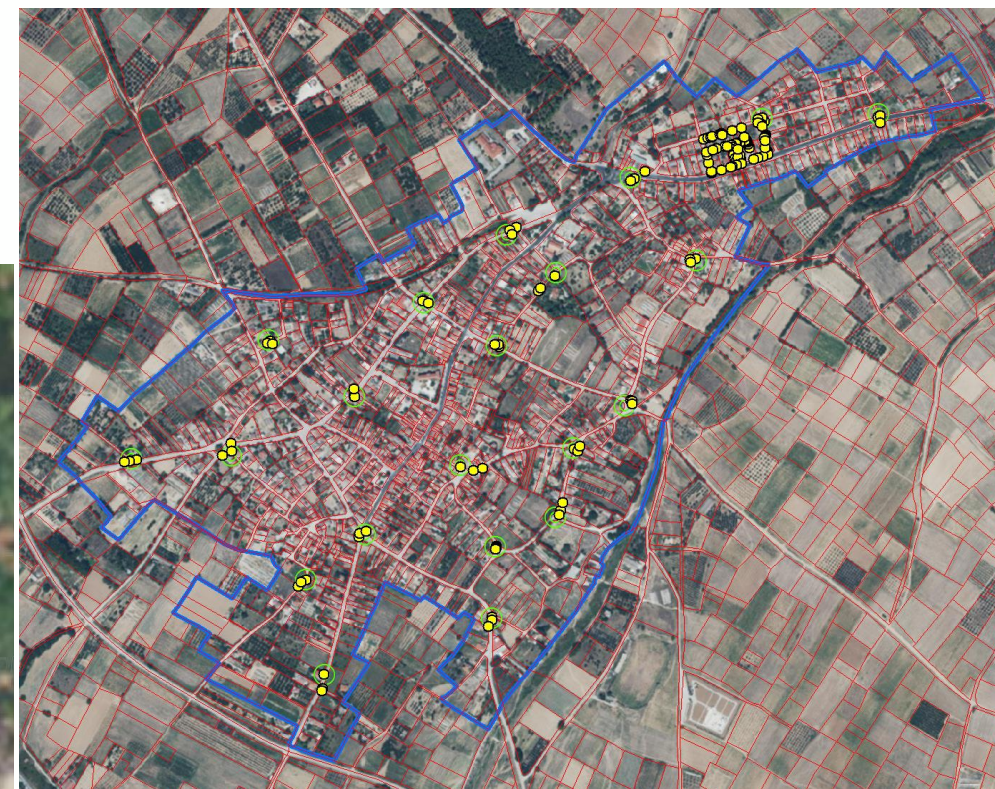


Κτηματογράφηση

- » Ηλεκτρονική Δήλωση Κτηματολογίου (Ν.2308/1995)
- » Έκδοση νέου εντύπου οφειλής
- » Εκτύπωση Αποδεικτικού Υποβολής Δήλωσης
- » Προανάρτηση
- » Ανάρτηση
- » Συνεδριάσεις επιτροπών ενστάσεων
- » Τελικά στοιχεία κτημ/σης - Αρχικές εγγραφές
- » Εντοπισμός μέσω κινητού

Hellenic Cadastre , Greece From May 2019 to Sep 2019

- Topic I can offer for next plenary Q-KEN meeting
 - Check the positional accuracy of spatial cadastral data.
 - Specifications
 - Costing
 - Planning
 - Implementation
 - Editing results
 - Reporting



Lechner Non-profit Ltd, Hungary

From May 2019 to September 2019

- **News concerning Data Quality**
 - Quality control of attributes of the Hungarian unified land registry
 - a) comparative study between the attributes of the Cadastral map and the Land registry (consistency study)
 - b) Based on differences were made the correction by the land offices
 - Quality Control of the new national base map on the level of Hydro and transport network
- **News concerning Quality management**
 - It has not decision yet about the continuation of Quality management.
- **Any other news that would be of interest for Q-KEN?**
 - New reorganization plan for our Institute from 1st of April, 2019. Merging with Lechner Non-profit Ltd (Hungarian Spatial planning Knowledge Center).
 - No any progress of dashboard.
- **Topic I can offer for next webinar or meeting**
 -

State Land Service, Latvia

From May 2019 to October 2019

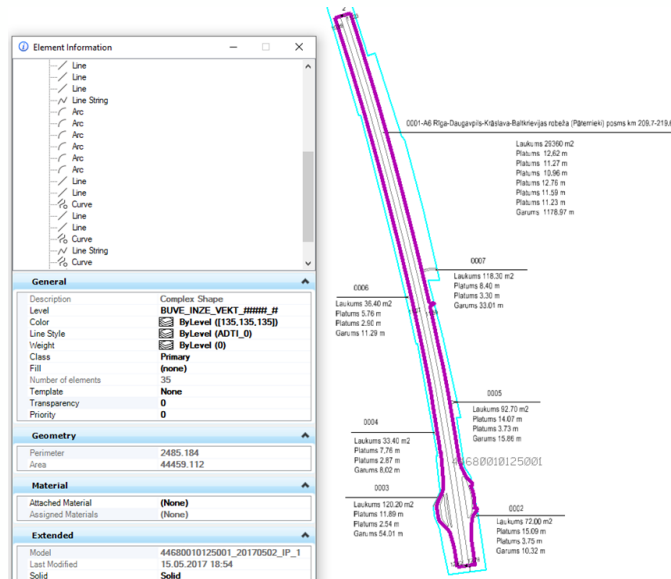
- **News concerning Data Quality**
 - working on completeness of engineering structures on the Cadastral Map, more than 600 engineering structures (most of all - roads) have been display on Cadastral Map

- **News concerning quality management**
 - the quality criteria have been reviewed and approved
 - the Control Register is still under reconstruction

[illegible]

State Land Service, Latvia From May 2019 to October 2019

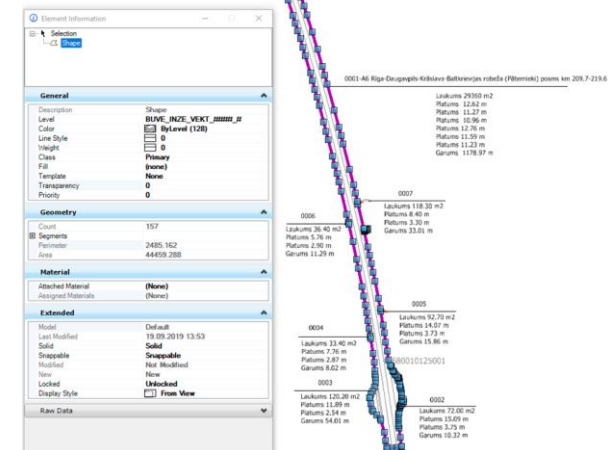
- Any other news that would be of interest for Q-KEN?
 - FME tool for building geometry processing is being developed



VZD dokumenti (X:) > Apmaina > BKU_KRISGP > KRISGP_Out

Nosaukums

01000050033_20180920_AP_018shape
 80600030230001_20180125_IP_Agnese_018shape
 80600030230001_20180125_IP_Agnese_038shape
 80600030261001_20180125_IP_Agnese_018shape
 80600030261001_20180125_IP_Agnese_038shape
 80600030298001_20180125_IP_Agnese_018shape
 80600030298001_20180125_IP_Agnese_038shape
 01000050033_20180920_AP_038shape
 44680010125001_20170502_IP_Agnese_038shape
 01000760062_20190702_AP_038shape



LGIA, Latvia

From April 2019 to October 2019

- On 11th June LGIA received the ISO 9001:2015 certificate for the process of creation, production, processing, storing and sharing of aeronavigational data

LGIA, Latvia

From April 2019 to October 2019

- Since 15th July all of the newest RGB orthophotos (100% coverage of Latvia) produced by LGIA in 2016-2018 are available as open data
- Since end of July also all of the LiDAR LAS data currently captured and produced by LGIA (approximately 82% coverage of Latvia) are available as open data
- The 7th cycle of aerial photography and the production of the remaining 18% of the LiDAR coverage of Latvia has started
- LGIA coordinates the preservation of Struve Geodetic Arc in Latvia, this year LGIA has restored the triangulation point «Nessaule-kalns». It's the second point of the nine points planned, now there are still seven Struve triangulation points remaining in Latvia, that currently are considered as destroyed and need to be restored

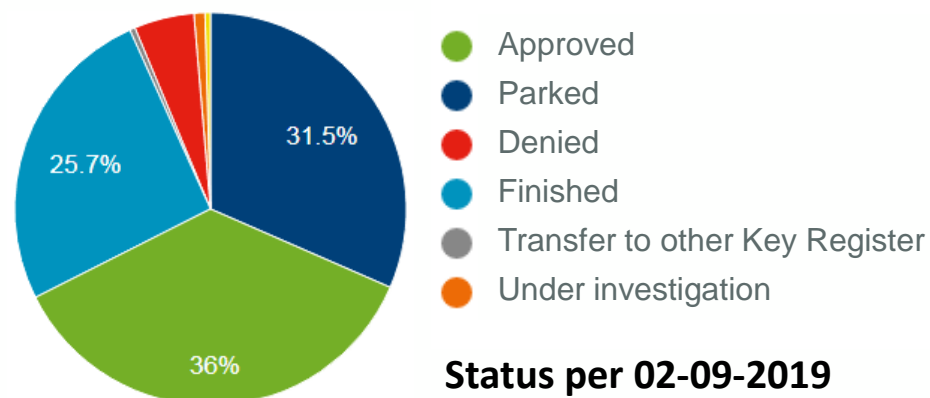
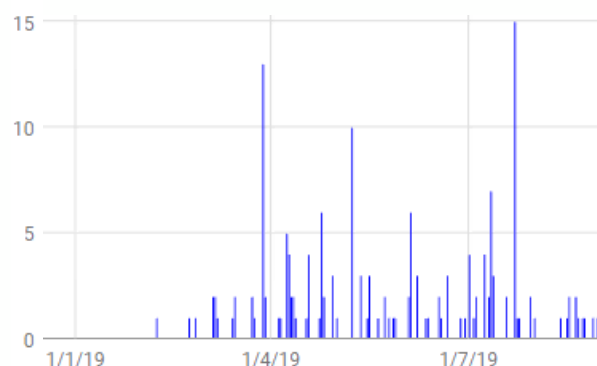
Kadaster, the Netherlands

October 2019



- **News concerning Data Quality and Quality Management**

- Quality is a main focuspoint in Kadaster strategic plan
- New version of RDNAPTRANS™: new official transformation from ETRS89 to Dutch coordinates that is easy to implement in GIS
- A new crowdsourcing API and crowdsourcing numbers for topographic data



Status per 02-09-2019

Kadaster, the Netherlands October 2019



- Topic I can offer for next meeting
 - Automatic generalisation of small-scale maps: a choice for recent data



Instituto Geográfico Nacional (IGN), Spain

From April 2019 to October 2019

- **News concerning Data Quality**
 - We continue working on developing automatic quality control in the new production environment with ArcGIS Pro. Mainly ensuring data consistency by running Python scripts.
 - In this sense, we have had problems with the performance of the tools provided by ArcGIS, specially with the tools that involve spatial operations.
 - Therefore, we have discarded using file geodatabases in order to be able to use SQL statements on the enterprise geodatabase that run extremely faster.

Instituto Geográfico Nacional (IGN), Spain

From April 2019 to October 2019

- **News concerning quality management**
 - We are finishing the integration between InciGeo (job order management tool) with the BDIG environment.

Instituto Geográfico Nacional (IGN), Spain

From April 2019 to October 2019

- Any other news that would be of interest for Q-KEN?
 - How visualization / dashboards is progressing in your organisation?
 - We have introduced in InciGeo (job order management tool), some Key Performance Indicators (KPI) to evaluate the success at reaching targets, detect bottlenecks in the workflow, etc.
 - We are taking part in the ISO 19157 review.

Instituto Geográfico Nacional (IGN), Spain

From April 2019 to October 2019

- Topic I can offer for next webinar
 - National Topographic Database of Spain, new conceptual models.

Lantmäteriet – The Swedish mapping, cadastral and land registration authority

From April 2019 to October 2019

- **Thesis -Lidar data to find power lines-control of completeness**
 - 40% of the powerlines could be found using lidar data with point density of 1-2 pts/sqm
- **Crowdsourcing road barrier**

Bundesamt für Landestopografie swisstopo , Switzerland

From 05 2019 to 10 2019

- **News concerning Data Quality**
 - We put more and more energy in test automation.

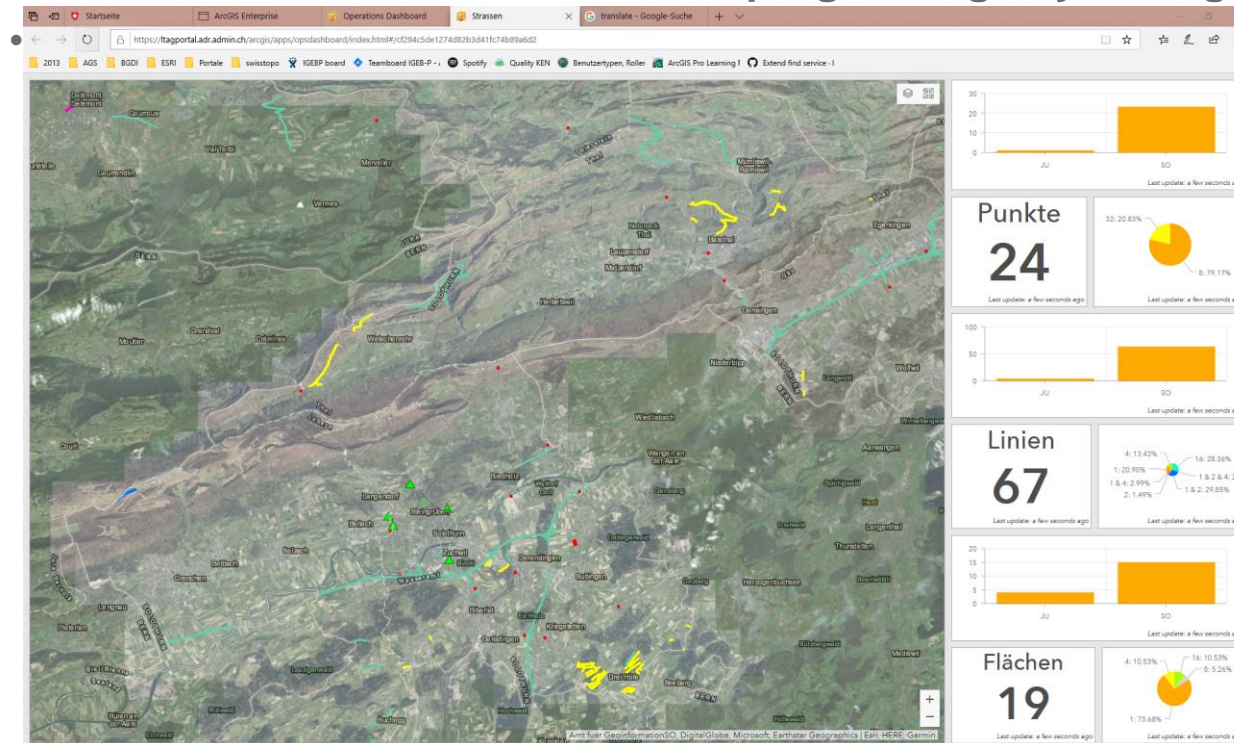
Bundesamt für Landestopografie swisstopo , Switzerland

From 05 2019 to 10 2019

- News concerning quality management
 - no news

Bundesamt für Landestopografie swisstopo , Switzerland From 05 2019 to 10 2019

- Any other news that would be of interest for Q-KEN?
 - How visualization / dashboards is progressing in your organisation? Slowly



Bundesamt für Landestopografie swisstopo , Switzerland

From 05 2019 to 10 2019

- Topic I can offer for next webinar
 - no
 -

Proposals for presentations at next plenary/webinar

Subject	Organisation
External data update	NGI, Belgium
Quality handbook for Topographic data	NLS, Finland
Annuel quality test	NLS, Finland
Qualification of GIS data	IGN, France
Principles for Quality Model	BKG, Germany
FME tool for building geometry	SLS, Latvia
Automatic generalization of small-scale maps: a choice for recent data	Kadaster, Netherlands
National Topographic Database of Spain, new conceptual models	IGN, Spain



Thank you for your work!