

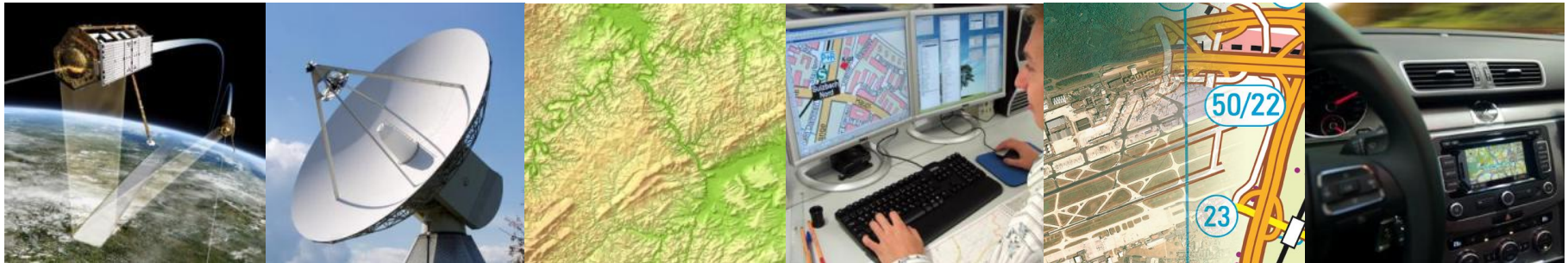


Federal Agency for
Cartography and Geodesy

Plenary Meeting of the Quality Knowledge Exchange Network 18.-20.10.2017, Frankfurt

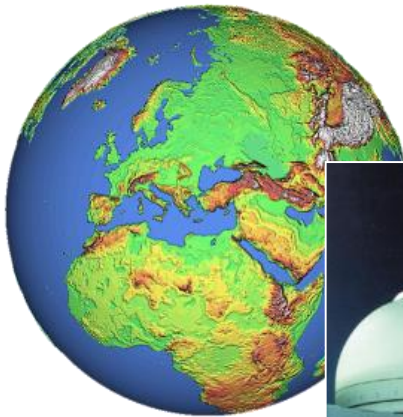
Prof. Hansjörg Kutterer

Bundesamt für Kartographie und Geodäsie



Our History

- Founded in 1951 as Institute for Applied Geodesy (IfAG)
- Assignment to the portfolio of the Federal Ministry of the Interior (BMI) by decree in 1952
- Renaming in 1997 after reorganisation into Federal Agency for Cartography and Geodesy (BKG)



Survey and Land Registration in Germany



**Länder
(states) / AdV**

**Survey and Land
Registration**

Provision of the geodetic reference systems, reference networks and geotopographic reference data of the Federal Government

**Federal
Government**

Statutory basis for BKG since 01.11.2012: Bundesgeoreferenzdatengesetz (BGeoRG) (Federal Act on Georeference Data). Further Administrative Agreements between the German federal and state governments regulate measures concerning provision and use of the data.

Survey and Land Registration in Germany



Tasks→ Spatial data management

Federal law:

- Federal act on georeference data (BGeoRG)
- Act on access to geodata (GeoZG) → INSPIRE

Länder law:

- Acts on surveying and cadaster
- Acts on access to geodata
- Acts on geodata infrastructure

BKG at a Glance

Who we are:


- The central service provider of topographic data, cartography, and geodetic reference systems for the German federal government
- A technical agency under the Federal Ministry of the Interior, with specialist departments in geodesy and geoinformation
- Operators of a service center for geoinformation and geodesy
- Providers of training in the professions of geomatics technician and precision mechanic



Tasks from the BGeoRG

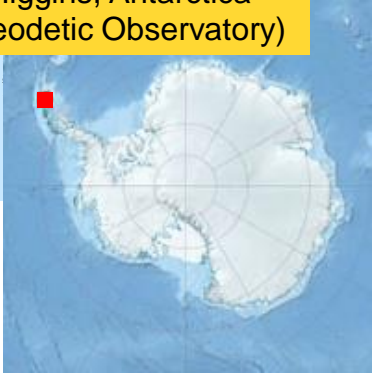
1. *Editing, updating and provision of **location-based and space-referenced data** [...],*
2. *Provision and maintenance of the national superordinate geodetic reference networks [...],*
3. *Collaboration [...] for the setup and maintenance of global geodetic reference systems as well as the further development of the [...] measurement and observation technology,*
4. *Coordination of the development and enhancement as well as preservation of the Federation's share in the Spatial Data Infrastructure Germany,*
5. *Operation of a Service Center of the Federal Government, which assumes the coordination function [...], carries out a need analysis for geodata, makes the latter available via a geoportal [...] and provides support to federal authorities [...],*
6. *Representation of technical interests of Germany [...], participation in the preparation of civil programs and legal regulations as well as in the [...] preparation and harmonization of cartographic and geodetic products.*

Locations



La Plata, Argentina
(Geodetic Observatory)

A map of Argentina with a red square marking the location of La Plata on the eastern coast.



O'Higgins, Antarctica
(Geodetic Observatory)

A map of Antarctica with a red square marking the location of O'Higgins on the western coast.

Organization



Federal Agency for
Cartography and Geodesy

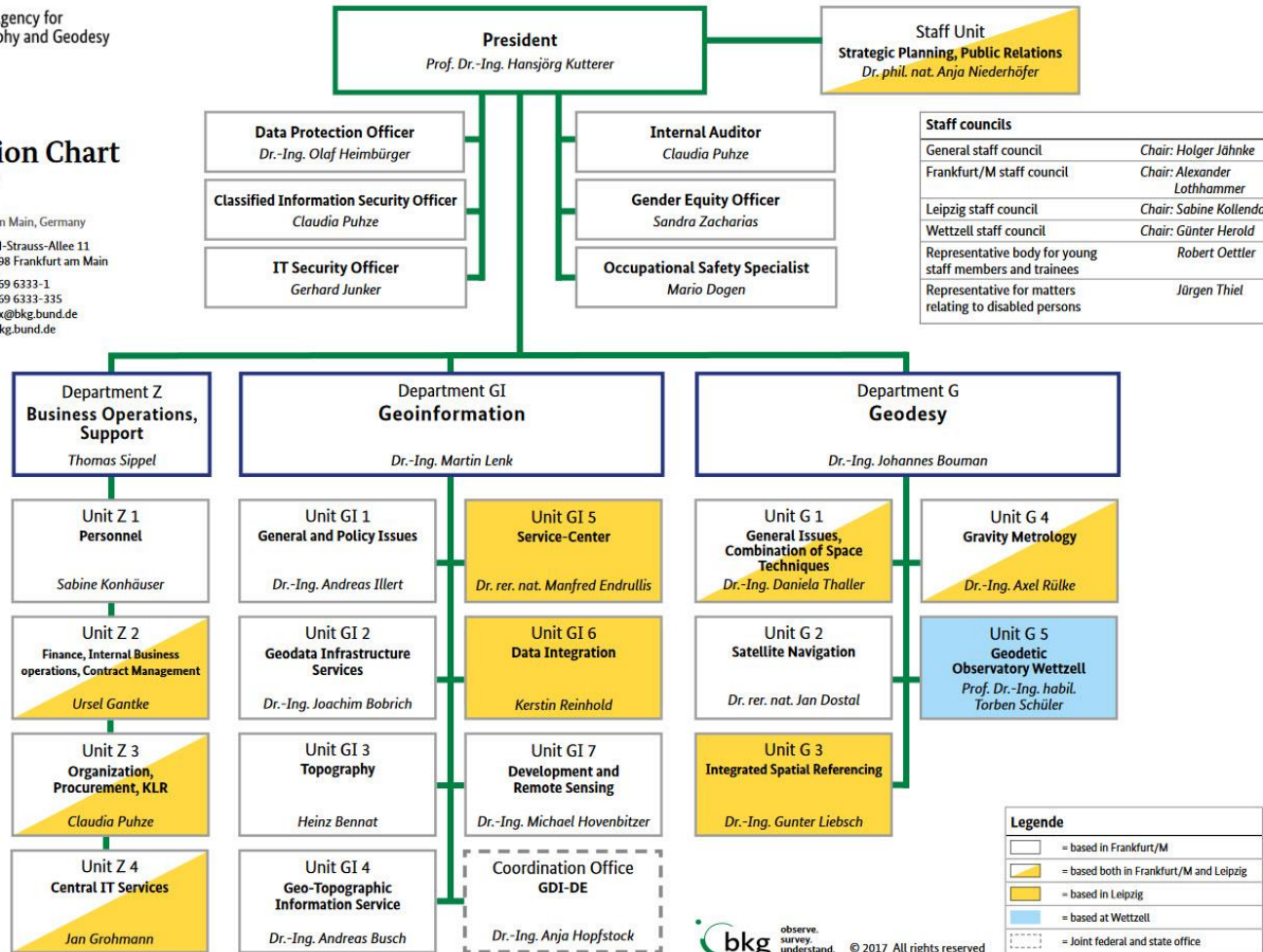
Organization Chart

As of September 2017

Central Office Frankfurt am Main, Germany

Address Richard-Strauss-Allee 11
D- 60598 Frankfurt am Main

Telephone +49 (0)69 6333-1
Telefax +49 (0)69 6333-335
E-Mail Mailbox@bkg.bund.de
Internet www.bkg.bund.de



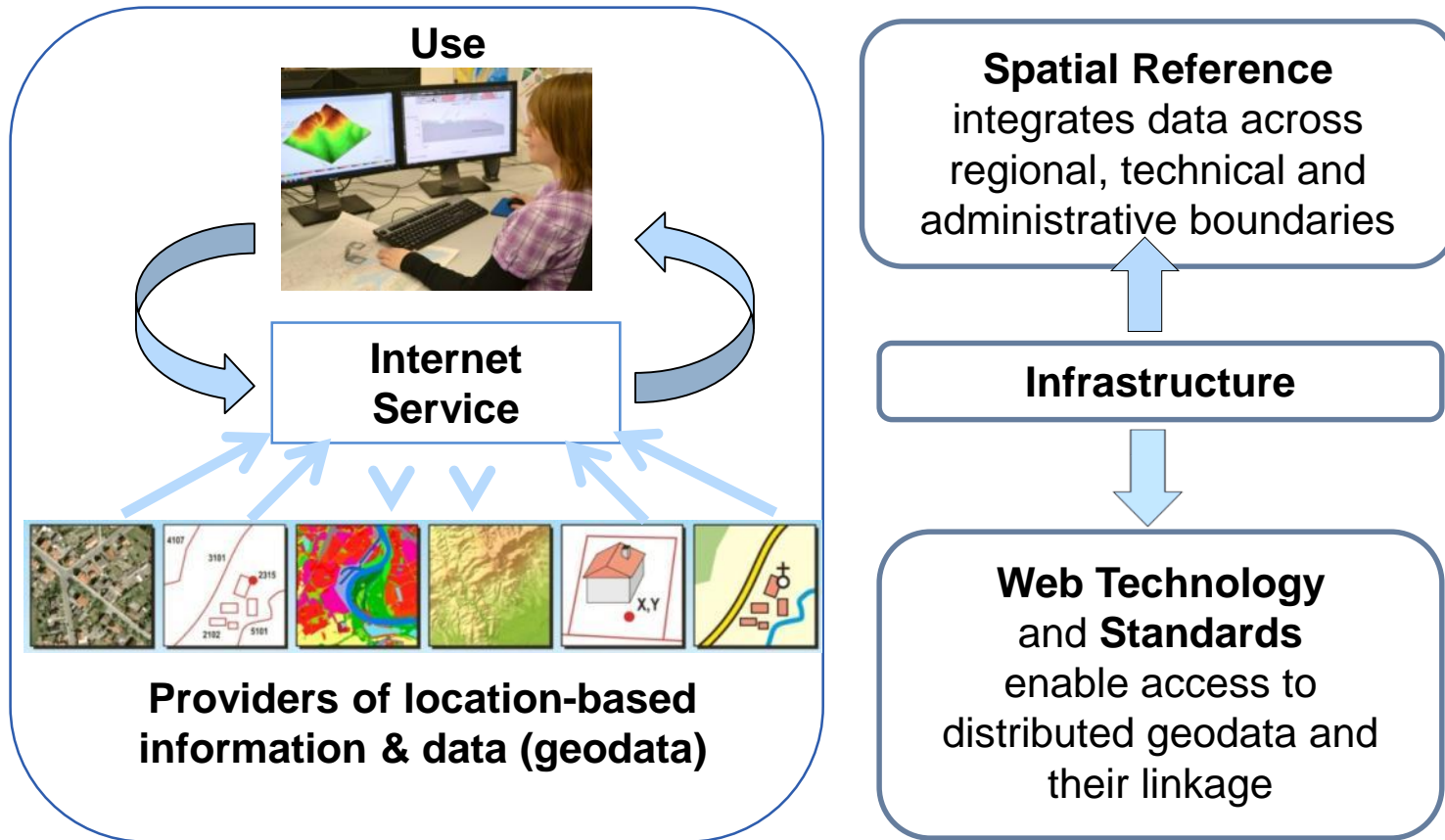
observe.
survey.
understand.

© 2017 All rights reserved



Federal Agency for
Cartography and Geodesy

Linkage of Geodata through Spatial Reference



Activities in the field of Geoinformation

Development

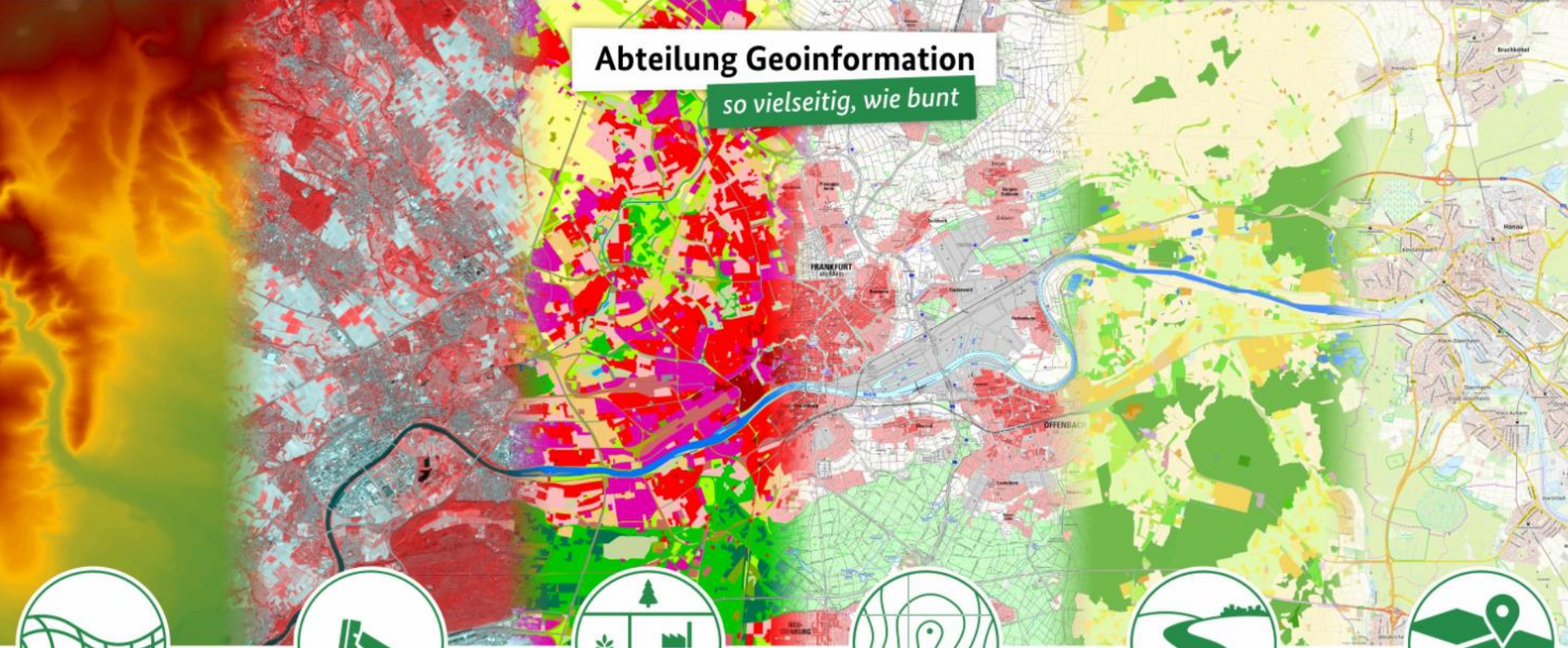
- National Spatial Data Infrastructure (GDI-DE)
- Internet services (Service Center)
- Land Cover Model (LBM-DE)
- DLM Modelling and Visualization (ATKIS)
- European GDI (INSPIRE, EuroGeographics)
- International projects (e.g. GMES, GEOSS, UN-GGIM)

Production

- Mean and small-scale map series and DLMs
- Participation in the production of European datasets (within the scope of EuroGeographics)
- Needs assessment and demand-oriented supply of the Federal Administration (Service Center)
- Data distribution/customer support (Service Center)

Abteilung Geoinformation

so vielseitig, wie bunt



DGM



Satellit



LBM



DTK



DLM



TopPlus

BKG's Service Center

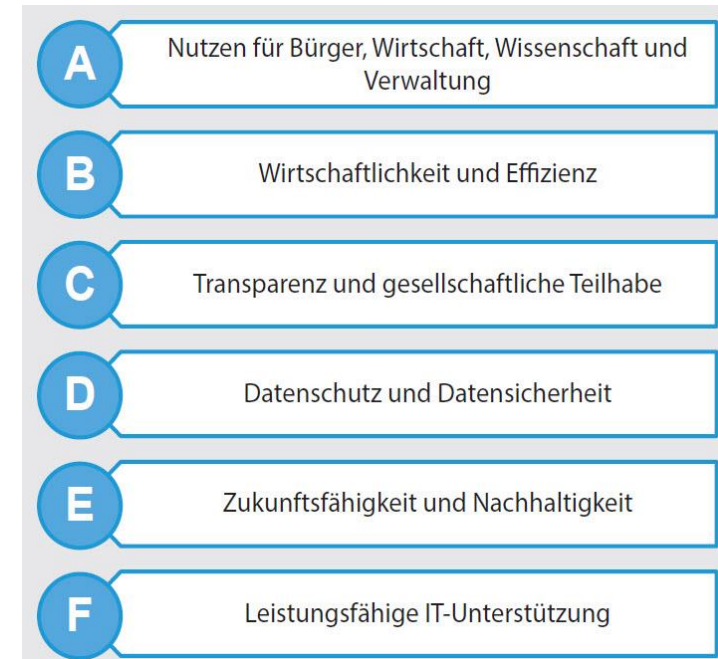
What is offered?

- **Central Service** with information on availability, quality, possibilities of use, terms of supply, and costs of the official basic geodata
- **User-oriented advice and provision of matched tools** as well as application-specific preparation of the data
- **Harmonization of the geodata sets** of the Länder (federal states)
- **Provision of the data**
 - in common standard formats, projections, reference systems and desired spatial sections
 - via standardized web services
- **Web applications** such as nationwide interactive maps, search of place names, or coordinate transformation
- **Online offers** for downloads of test data, documentation, tile indexes and much more



National Strategy for Geoinformation (NGIS)

- Crosslevel national strategy for geoinformation adopted in 2015
- Developed in cooperation with all federal levels (federal government, Länder, municipality), open communities, science and economy
- 3. National Progress Report on Geoinformation from 2012 pointed out key points for the national strategy for geoinformation
- 4. National Progress Report on Geoinformation adopted in June 2017
- Implementation of the NGIS started in May 2017



4. National Progress Report on Geoinformation

- Adopted in June 2017
 - Based on actions for the implementation of the objectives of NGIS
 - Main objectives and actions in areas of:
 - Digitization and mobility
 - Open data
 - INSPIRE
 - Potential of Remote Sensing
 - Trends in IT
 - Sustainable Development Goals
- Identifying and using external influences and driving forces

Geoinformationen einfach genutzt

Vierter Bericht der
Bundesregierung über die
Fortschritte zur Entwicklung der
verschiedenen Felder des
Geoinformationswesens im
nationalen, europäischen und
internationalen Kontext

4. Geo-Fortschrittsbericht
der Bundesregierung

The Working Committee of the Surveying Authorities of the Länder of the Federal Republic of Germany (AdV)



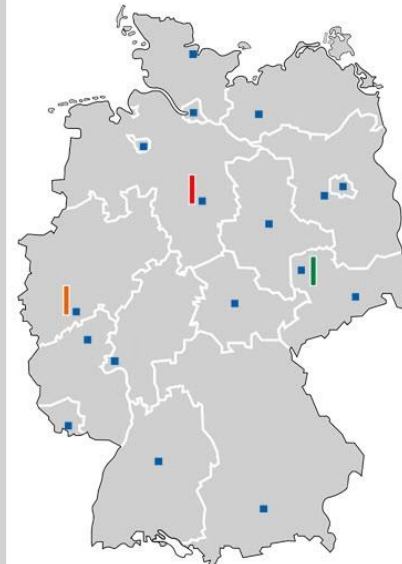
Arbeitsgemeinschaft der
Vermessungsverwaltungen
der Länder der Bundesre-
publik Deutschland (AdV)

- German umbrella organisation of the authorities of the 16 Länder competent for land surveying and cadaster and of three federal authorities
- Central distribution of products (e.g. topographical data by BKG)

AdV-Produkte

- Vertriebsstellen
 - ZSHH
 - ZSS
 - Liegenschaftskataster
 - Geotopographie
 - Festpunkte
 - SAPOS
 - Geobasisdatendienste
 - Weitere Produkte
 - Metadateninformationssystem
 - Bezugsbedingungen
 - Standards und Produktblätter
- AAA®-Modell
- Geodätische Grundlagen
- Veröffentlichungen
- Links
- Termine

GeoBasis-DE



Ein Klick auf die Fläche eines Bundeslandes reicht aus, hier öffnet sich die entsprechende Seite der Vertriebsstelle im neuen Browserfenster. Zur Anzeige der Adresse reicht ein Überfahren mit der Maus bereits aus.

Länderübergreifende, bundesweite Vertriebsstellen

GeoBasis-DE

[Satellitenpositionierungsdienst der deutschen Landesvermessung](#)

Landesamt für Geoinformation und Landesvermessung
Niedersachsen

Tel.: +49 511 64609-222

E-Mail: sapos-zentrale-stelle@lgl.niedersachsen.de
www.zentrale-stelle-sapos.de

GeoBasis-DE

[Hauskoordinaten und Hausumringe des deutschen Liegenschaftskatasters](#)

Bezirksregierung Köln

Tel.: +49 221 147-4481

E-Mail: hauskoordinaten@bezreg-koeln.nrw.de
www.geobasis.nrw.de

GeoBasis-DE

Geodaten der deutschen Landesvermessung

Bundesamt für Kartographie und Geodäsie

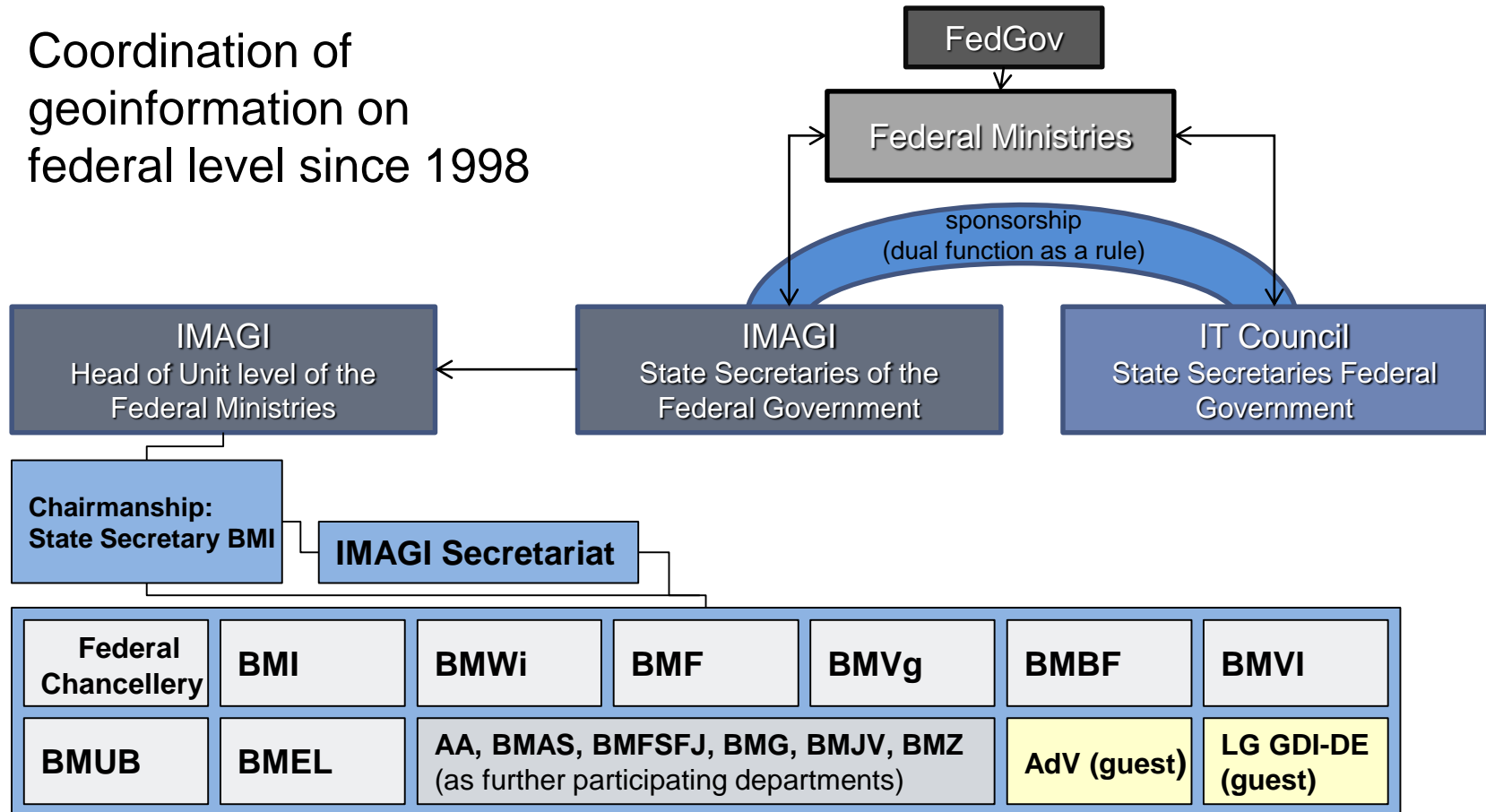
ZSGT am Dienstleistungszentrum

Tel.: +49 341 5634-333

E-Mail: dlz@bkg.bund.de
www.geodatenzentrum.de

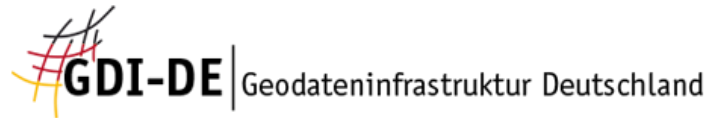
The Interministerial Committee for Geoinformation (IMAGI)

- Coordination of geoinformation on federal level since 1998



Examples for present cooperations

- National



Arbeitsgemeinschaft der
Vermessungsverwaltungen
der Länder der Bundesre-
publik Deutschland (AdV)



Bundesamt
für Migration
und Flüchtlinge

BUNDESPOLIZEI

- European



UN-GGIM: EUROPE | United Nations Initiative on
Global Geospatial Information Management



EuroGeographics



- International



UN-GGIM | United Nations Initiative on
Global Geospatial Information Management

GEO GROUP ON
EARTH OBSERVATIONS



UNEGN | United Nations Group of
Experts on Geographical Names

GEOS
Global Earth Observation System of Systems



**Thank you for your
kind attention!**

Prof. Dr.-Ing. Hansjörg Kutterer

Director General

Bundesamt für Kartographie und Geodäsie
Richard-Strauss-Allee 11
60598 Frankfurt

Tel.: + 49 – 69 – 6333 226

Fax: + 49 – 69 – 6333 441

E-Mail: vorzimmerpraesident@bkg.bund.de