

# Copernicus agreement

Saulius Urbanas, EuroGeographics

6<sup>th</sup> May 2015



# Best practice: EG – EEA agreement in November 2011



- Purpose: to **facilitate access to authoritative Geospatial Reference Data (GRD)** for Copernicus Emergency Management Service (EMS).
- Issues identified: **restrictive data access policies** in many EG member organisations
- Temporary solution: **simplified arrangements** (the agreement by the letter)

European Environment Agency



EuroGeographics

CONNECTING YOU TO THE  
**AUTHORITATIVE GEO-INFORMATION  
FRAMEWORK FOR EUROPE**



# Scope of interest in

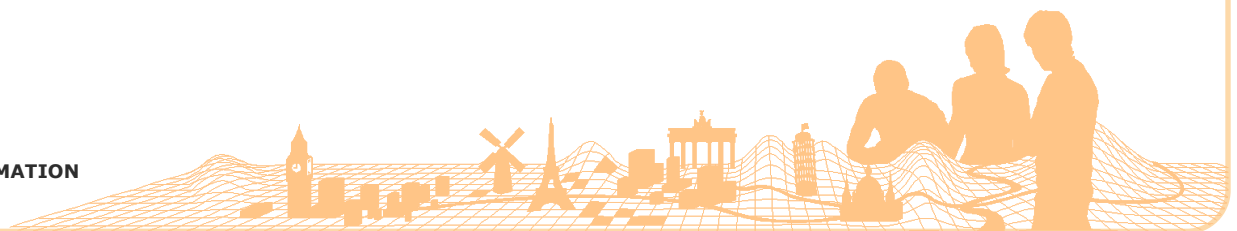


- Themes
  - Land monitoring
  - Emergency
  - Marine
  - Security
  - Atmosphere
  - Climate change
- Utilisation of the satellite data for NMCA's
  - Sentinel-1, Sentinel-2



# Delegation agreement between EU and EEA

- The Agreement grants the EEA the responsibility for cross-cutting coordination of access to in-situ data for Copernicus services
- The agreement was signed 1<sup>st</sup> Dec 2014
- Letter from EEA on the continuity of close cooperation with EuroGeographics



# Feedback from EEA (1)

- Issues on resources.
  - Due to the change of employment rules in EEA the activities were divided to a number of “project like” tasks and those are handled by contractors
- Hans Dufourmont is the responsible person for coordination of Copernicus matters in EEA
- EEA received big funding (87 mln EUR), but lacks resources to proceed.
- EEA tries to deny from or limit its contribution in INSPIRE implementation activities. This is due to a scepticism on INSPIRE by the current (new) Executive director of EEA, Mr Hans Bruyninckx.



# Feedback from EEA (2)

- EG shall persuade Copernicus unit (changes in staff). EEA simply follow orders from the Copernicus unit. EEA is very dependent on the Copernicus unit and does not initiate “own projects” related to Copernicus
  - Example for us – EUMETSAT
- The consortium of private companies have not produced yet a significant outcome in the project for facilitating access to reference information (one window to browse), but progressed collecting the sources of information and making pilots. The application will only browse open data (free of charge). Some part of ELF might be used for this

