



# Eurostat requirements

**Technical Meeting of the EuroGeographics Data Producers  
22<sup>nd</sup>-23<sup>rd</sup> September 2020**

**Julien Gaffuri – Eurostat GISCO**

**[estat-gisco@ec.europa.eu](mailto:estat-gisco@ec.europa.eu)**

# Thank you !

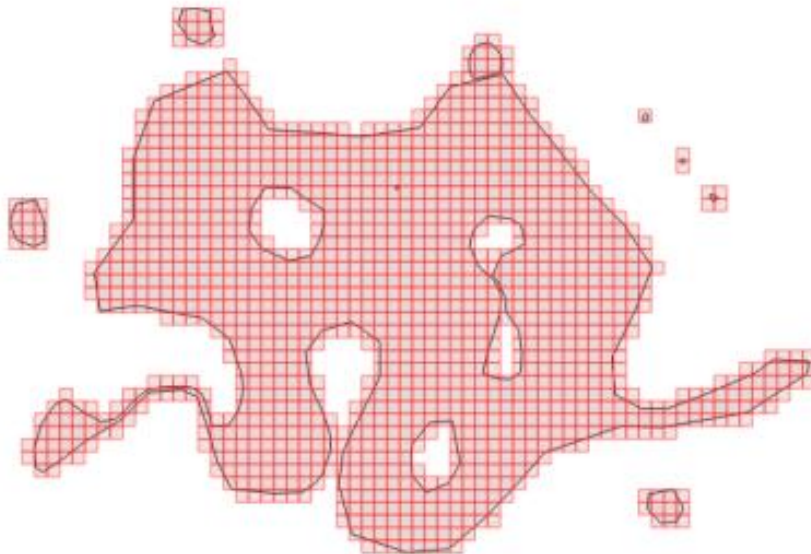
# Euro Boundary Map

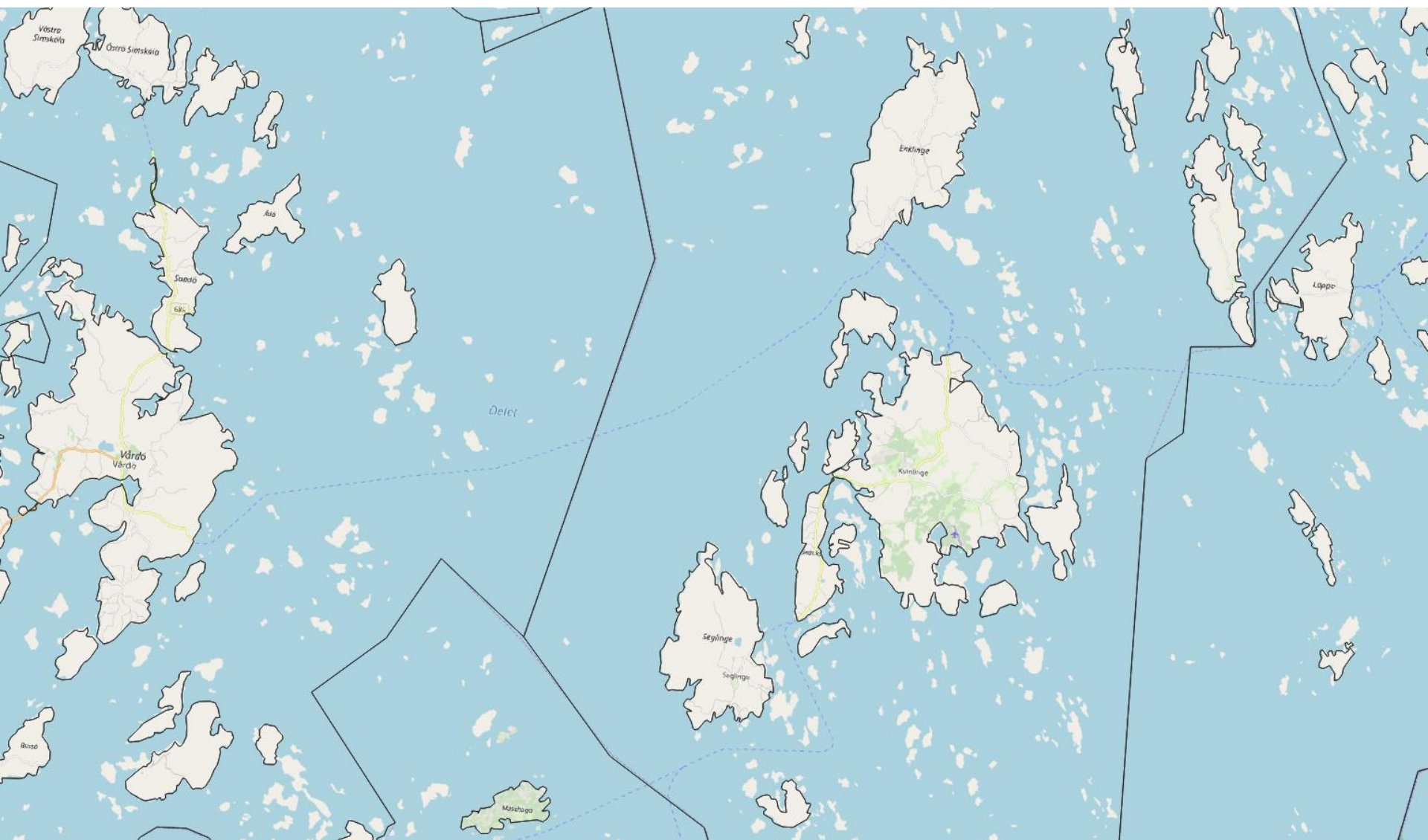
*3 main requirements:*

- *Missing islands*
- *Update speed (and frequency)*
- *NSI-EBM LAU list matching*
- *Licensing conditions*

# EBM missing islands

- *Many important islands are missing*
- *Significant impact on the computation of statistical grids*

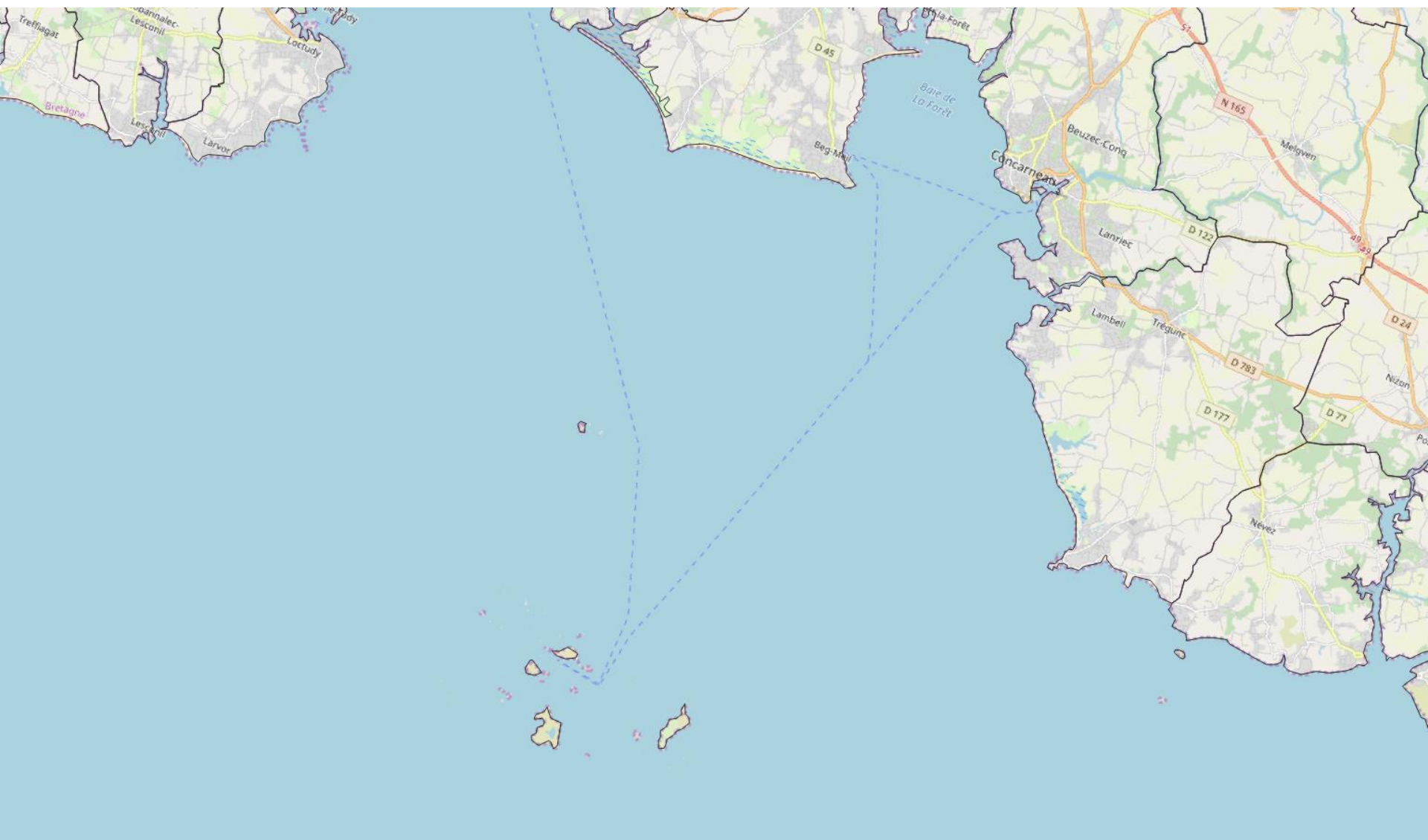




NB: image at scale 1:100k

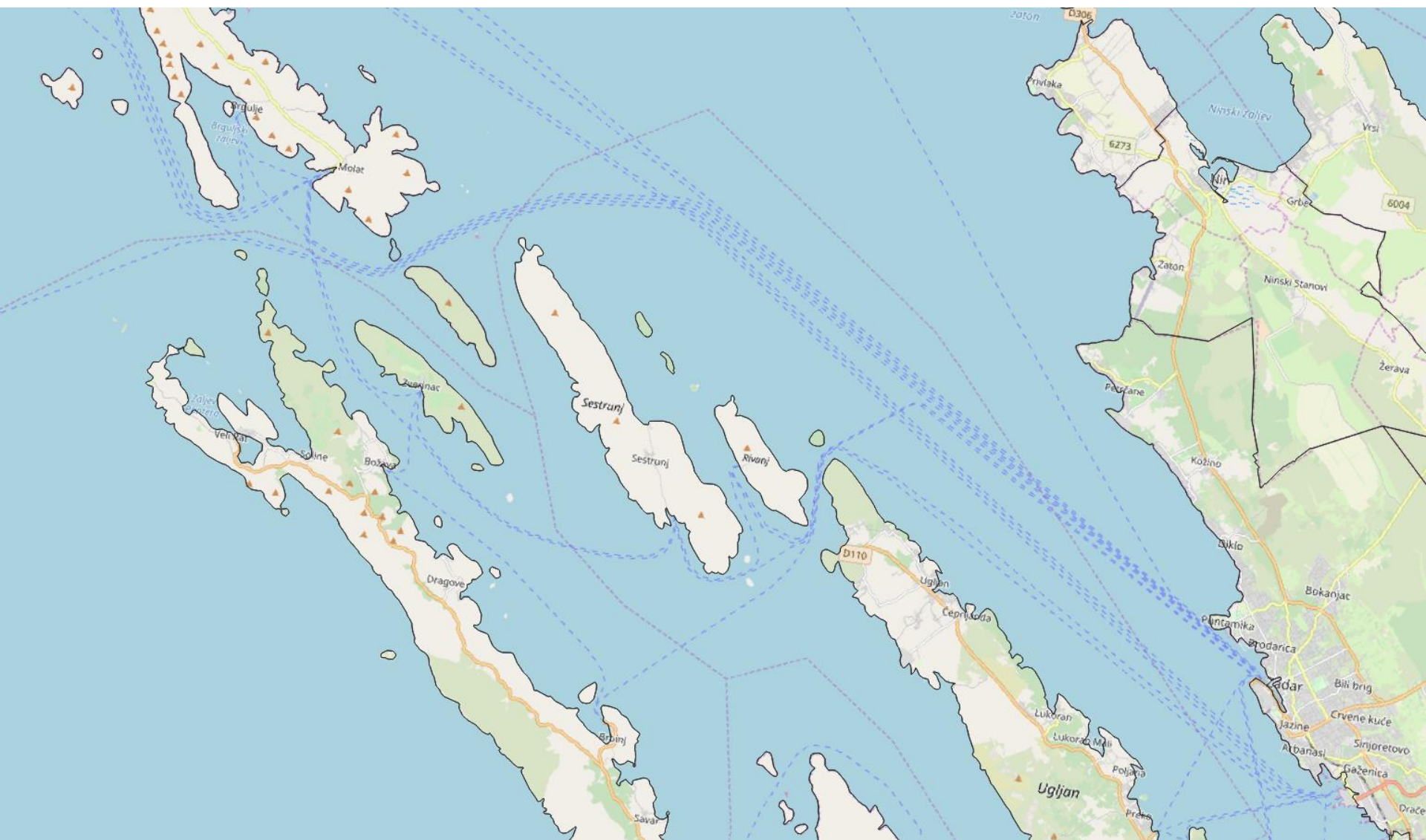


European  
Commission



NB: image at scale 1:100k





NB: image at scale 1:100k



NB: image at scale 1:100k





NB: image at scale 1:100k





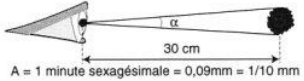

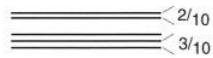


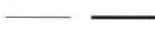


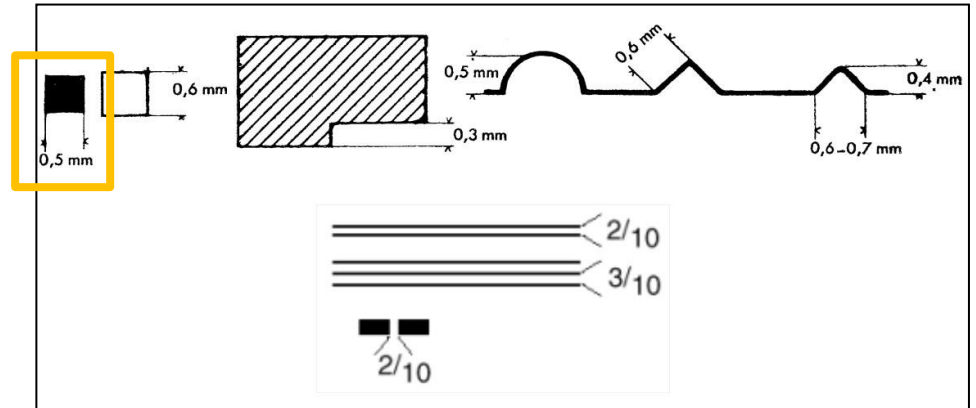
# EBM missing islands

- *Generalisation issue*
- *EBM specifications:*
  - **Nominal scale: 1:100k**
  - **Current selection threshold set to 4 Ha**
- *Expected selection threshold for 1:100k:*  
**0.25 Ha (max)**

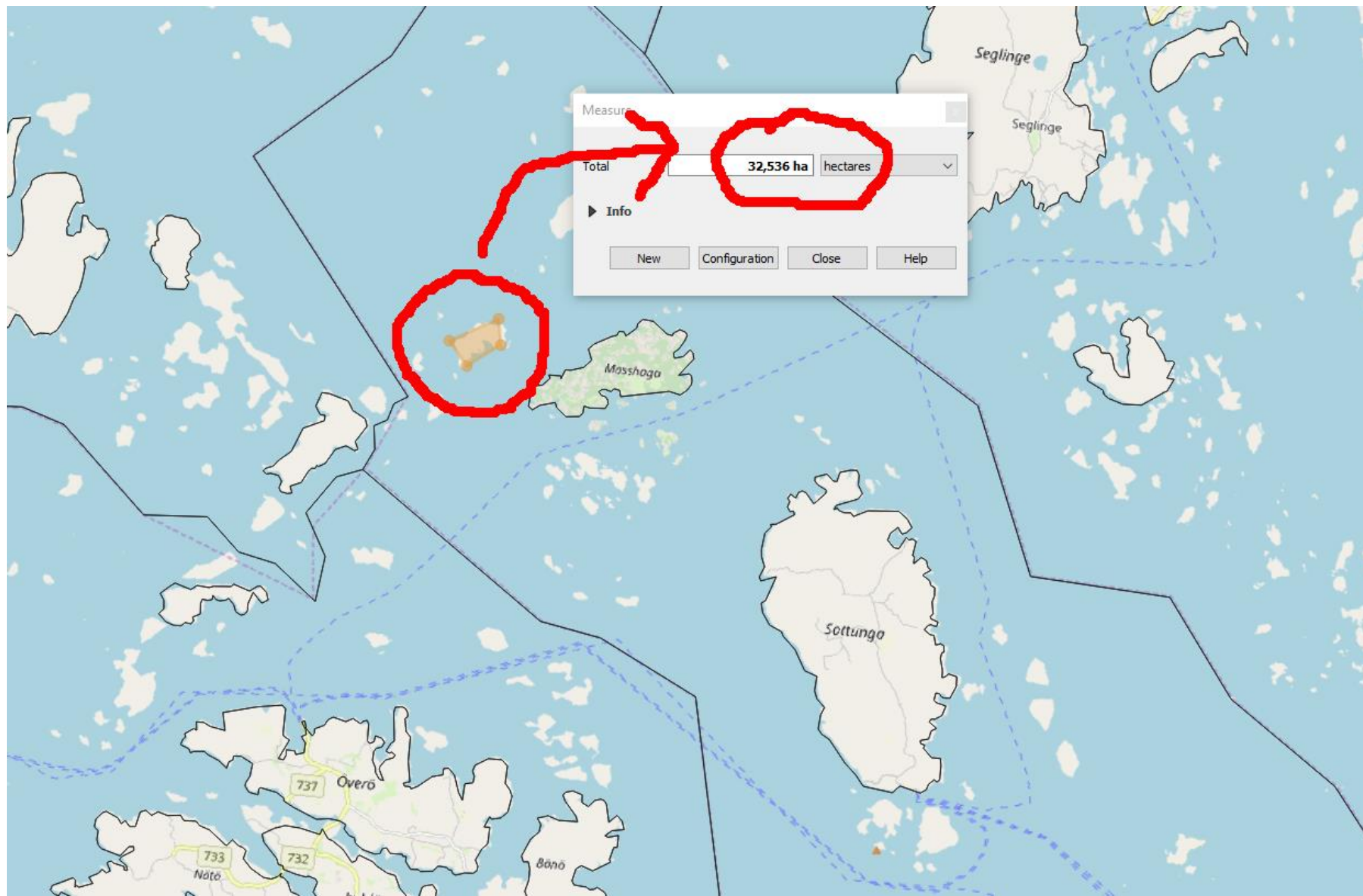
# EBM missing islands

- Expected selection threshold:*  
 **$0.5 * 0.5 \text{ mm at } 1:100\text{k} = \underline{0.25 \text{ Ha}}$**

CONTRAINTES VISUELLES	REPRÉSENTATION GRAPHIQUE
Acuité visuelle de discrémiation	
Acuité visuelle d'alignement	
Seuil de perception	<p>Ponctuel ● 0,2 mm ■ 0,4 mm ○ 0,3 mm □ 0,5 mm</p> <p>▲ 1 mm ▽ 0,5 mm — 0,6 mm</p> <p>Linéaire — 0,1 mm</p>
Seuil de séparation	<p>Linéaire </p> <p>Ponctuel </p>
Seuil de différenciation	<p>Ponctuel ● entre 2 paliers le rapport des surfaces doit être au moins de 2</p> <p>Linéaire  Traits rapprochés écart d'épaisseur 0,1mm</p> <p> Traits éloignés 0,3 mm minimum</p>







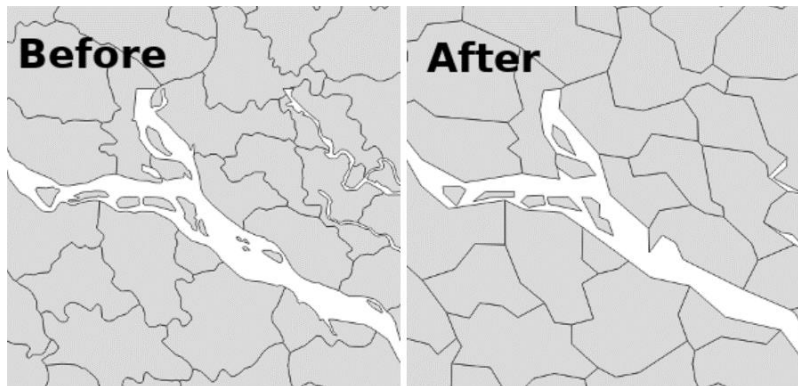
NB: image at scale 1:100k

# EBM missing islands

- *Possible actions:*
  - **Retrieve missing islands from other external coast line dataset**
  - **Provide pre-generalisation data to Eurostat**

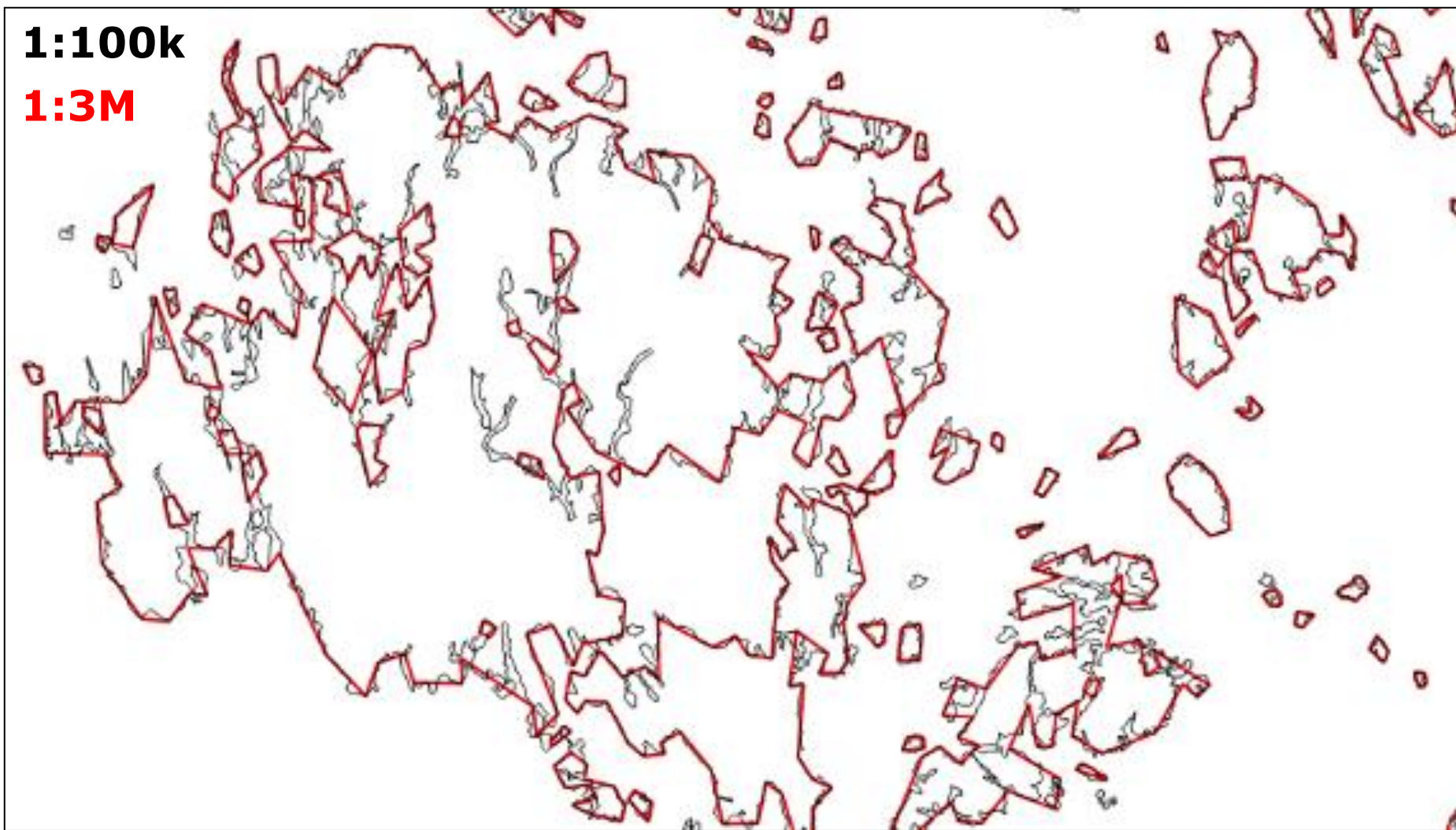
# RegionSimplify tool

- *For automated generalisation of administrative units geometries.*
- *Developed internally at GISCO for the production of the NUTS datasets.*
- *Available:*  
<https://github.com/eurostat/RegionSimplify>



**1:100k**

**1:3M**



See more on: <https://github.com/eurostat/RegionSimplify>



European  
Commission

# EBM update speed (and frequency)

- *Currently: Yearly updates, for year  $Y-1$ .*
- *Target: Yearly updates, for year  $Y-\varepsilon$ .*
- *Ideally: Continuous updating.*
- *Encourage adoption of incremental updating.*

*Adopting incremental updating approach drastically decreases updating cost and open the possibility for more frequent (even continuous) automated updates.*



# EBM update speed (and frequency)

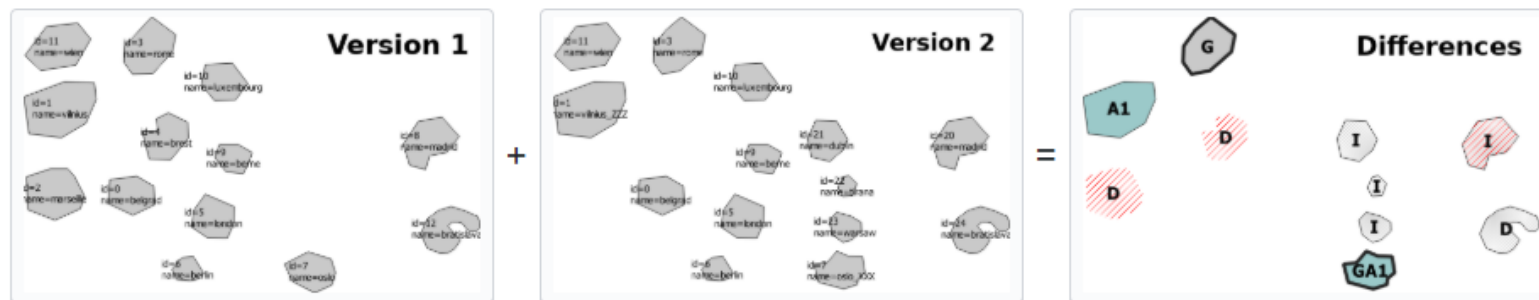
- *Need for identifier stability*
  - **Features which do not change or change only slightly should keep the same identifier from a version to the next.**
- *Need for dissemination of differential dataset.*
  - **Disseminate the new version of the dataset AND a dataset representing the changes compared to the previous version.**

# GeoDiff tool

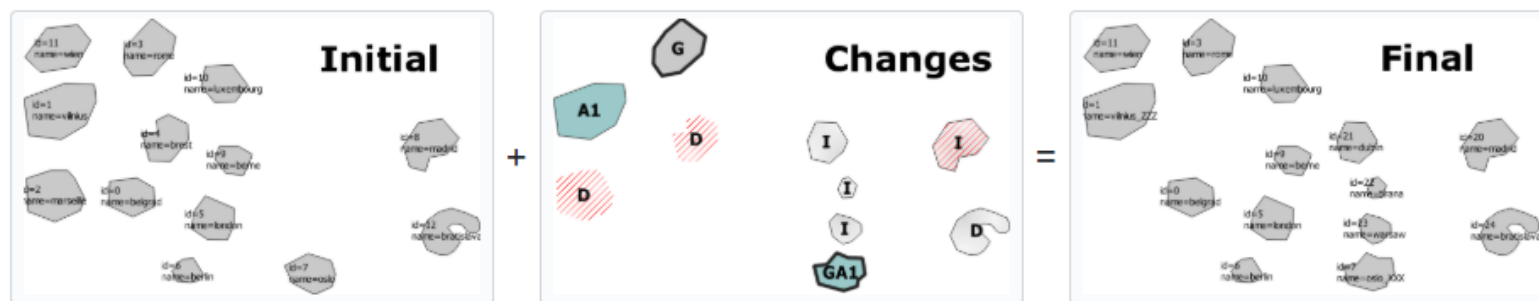
- *For incremental update of geospatial datasets*
  - **Difference analysis mode: Compute the difference between two versions.**
  - **Update mode: Apply changes/updates.**
- *Proposition for a format to represent the differences*
- *Developed internally at GISCO*
- *Available on:*  
<https://github.com/eurostat/GeoDiff>

# GeoDiff tool

Difference analysis mode:

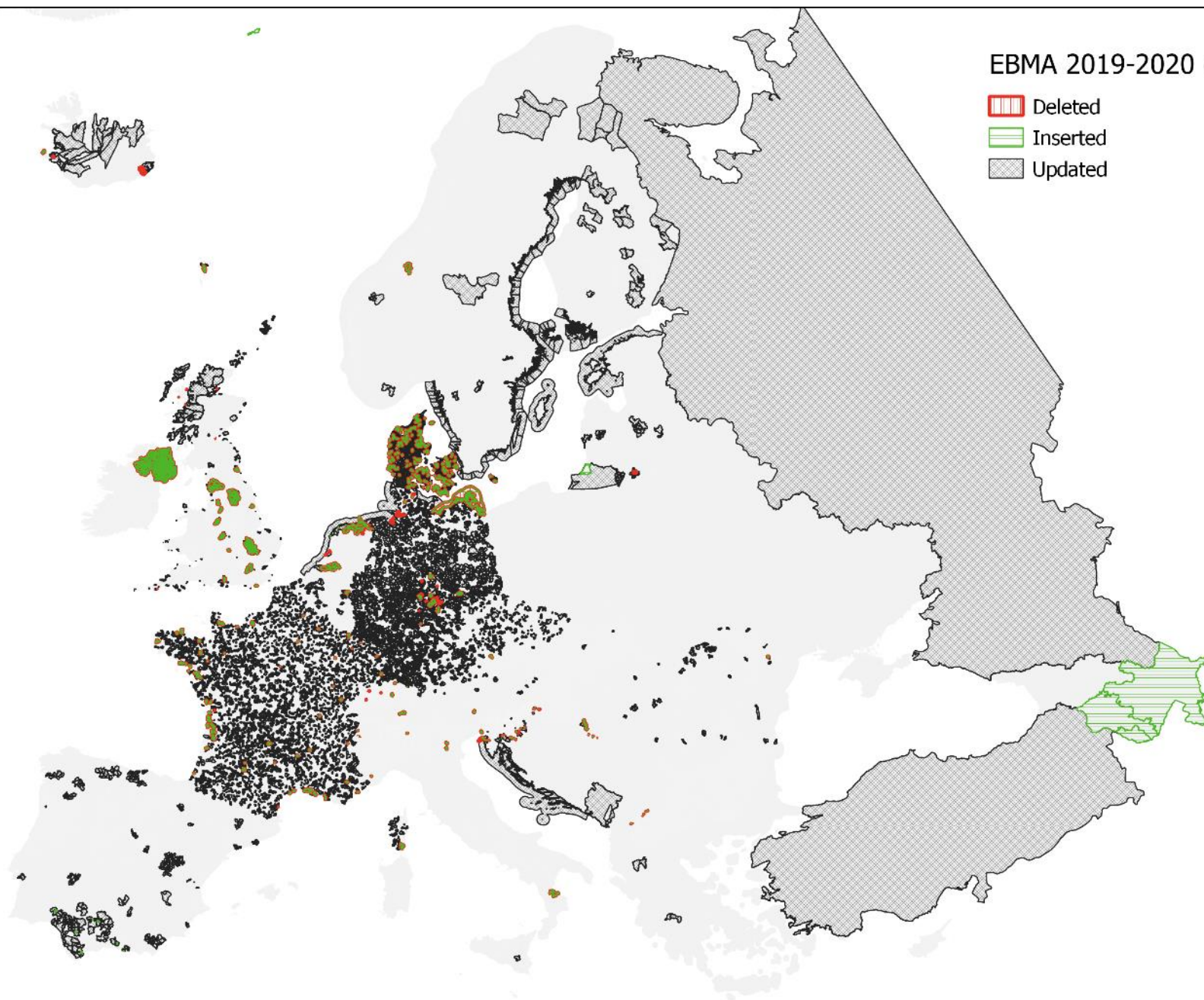


Update mode:

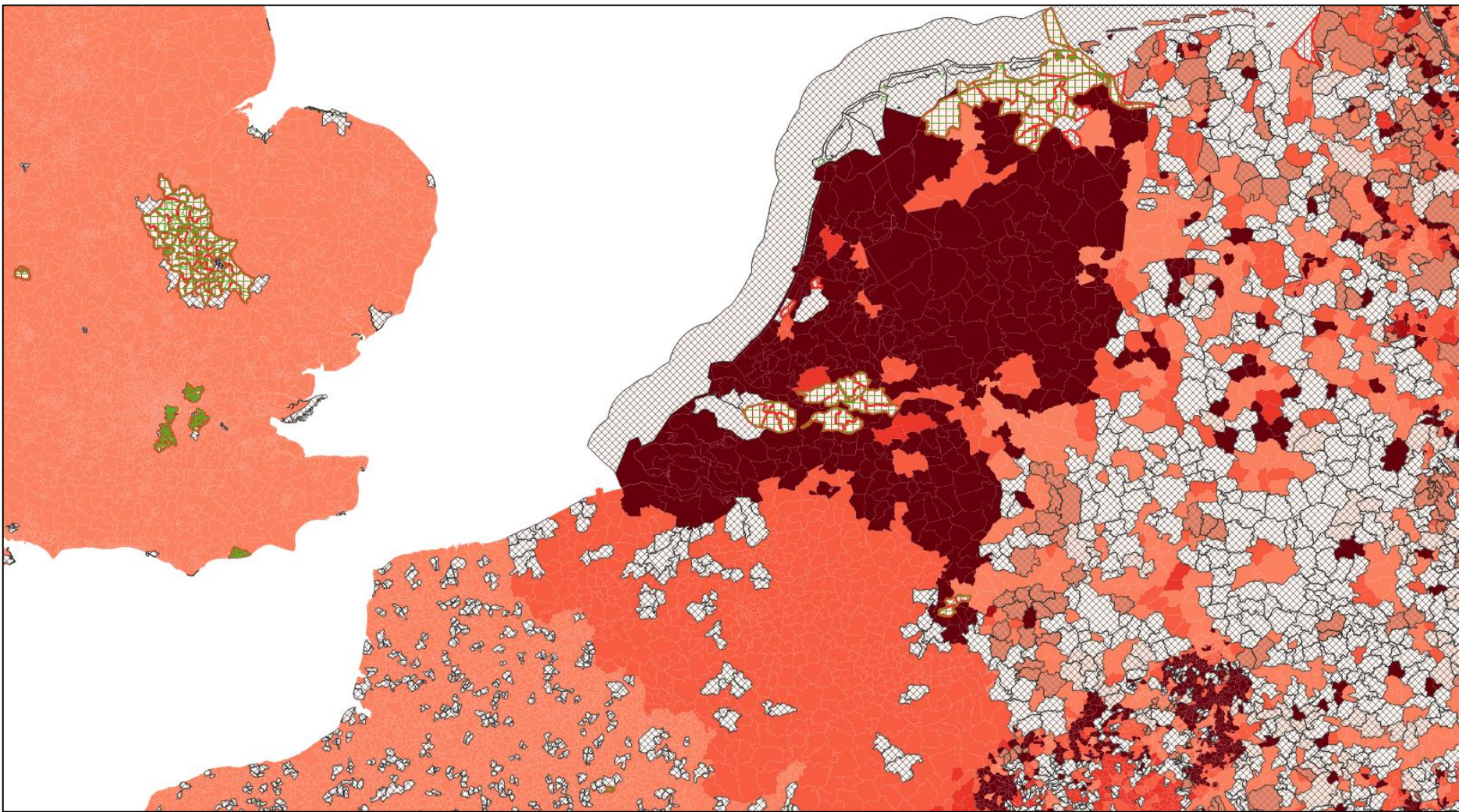


# EBMA 2019-2020 comparison

- Deleted
- Inserted
- Updated









# EBM update speed

- *Possible actions:*
  - **Ensure identifier stability**
  - **Opt for a centralised updating approach of ERM, with progressive adoption of incremental updating**
  - **Deliver updates to users**
  - **KEN**
  - **Adopt GeoDiff format**

# NSI-EBM LAU list matching

- *Eurostat population figures by LAU*  
<https://ec.europa.eu/eurostat/web/nuts/local-administrative-units>
- *Population figures provided by NSIs*
- *Frequent mismatches between LAU ids of EBM and LAU ids of NSIs (for few countries only, 5%)*
- *Same issues for NUTS updates (every 3 years)*
- *Possible action: At MS level, ensure NSIs and NMCAAs are sharing the same versioning model of the LAU*

# Licensing conditions

- *Main priority: Internal use for the European Commission (and executive agencies)*
- *Possibility for public dissemination for 1:1M versions, for non commercial use.*
- *Need for more permissive licensing conditions:*
  - **Within the European Statistical Systems (among the National Statistical Institutes)**
  - **Publicly (not only 1:1M, also for commercial use)**
  - **For derived products**

# Thank you !

- *Missing islands*
- *Update speed (and frequency)*
- *NSI-EBM LAU list matching*
- *Licensing conditions*

**[estat-gisco@ec.europa.eu](mailto:estat-gisco@ec.europa.eu)**